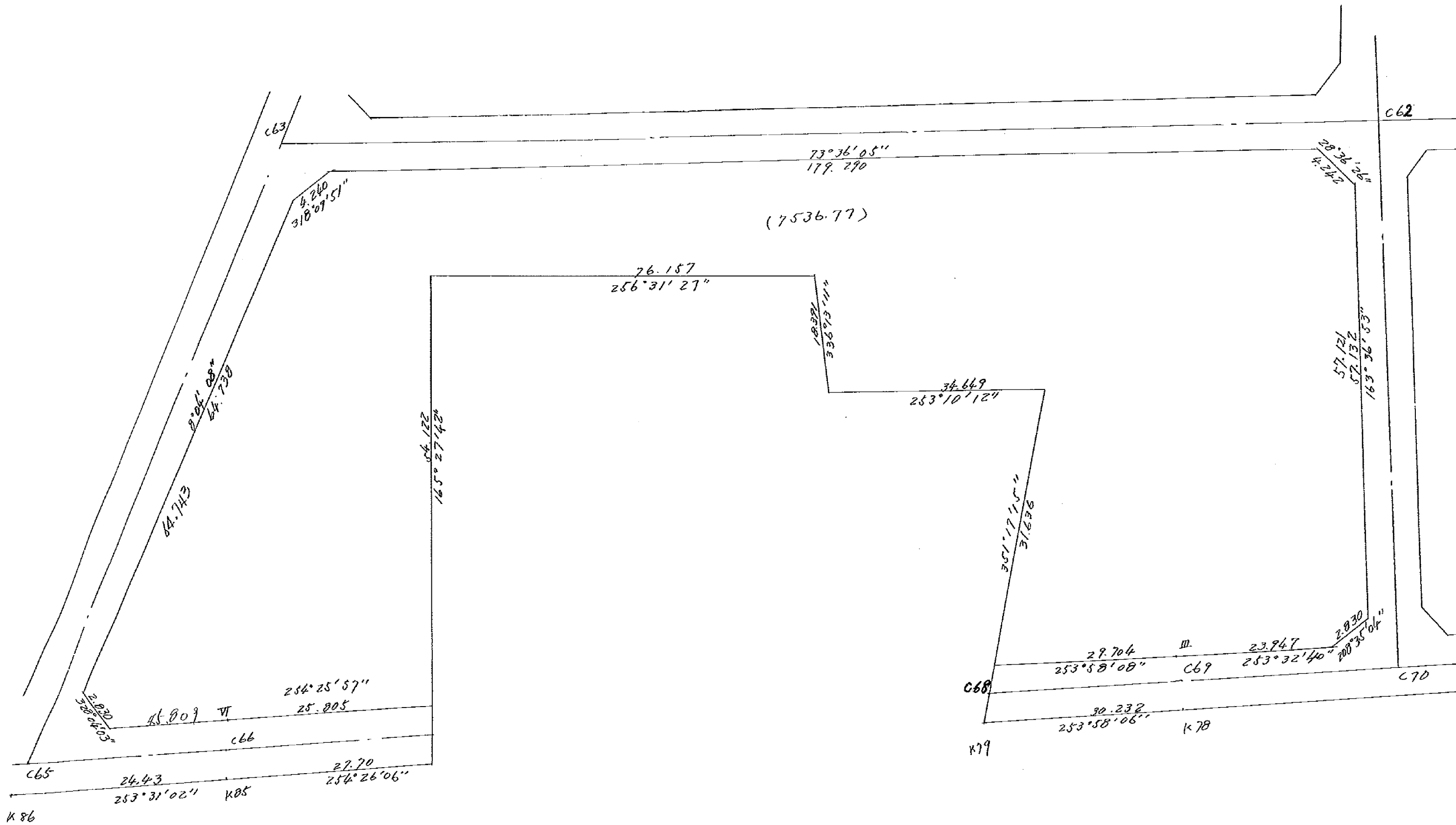


1-31



1-31

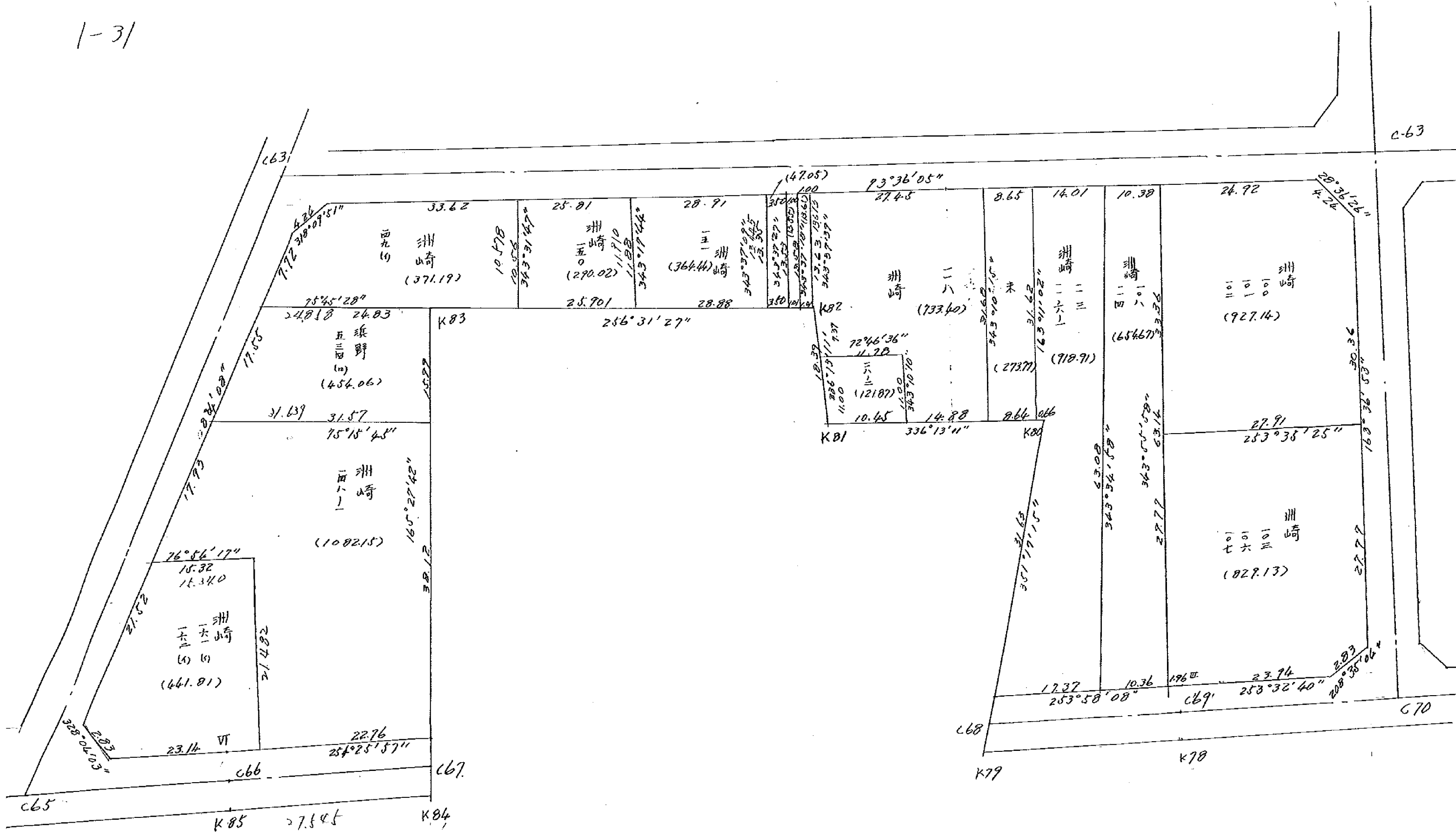
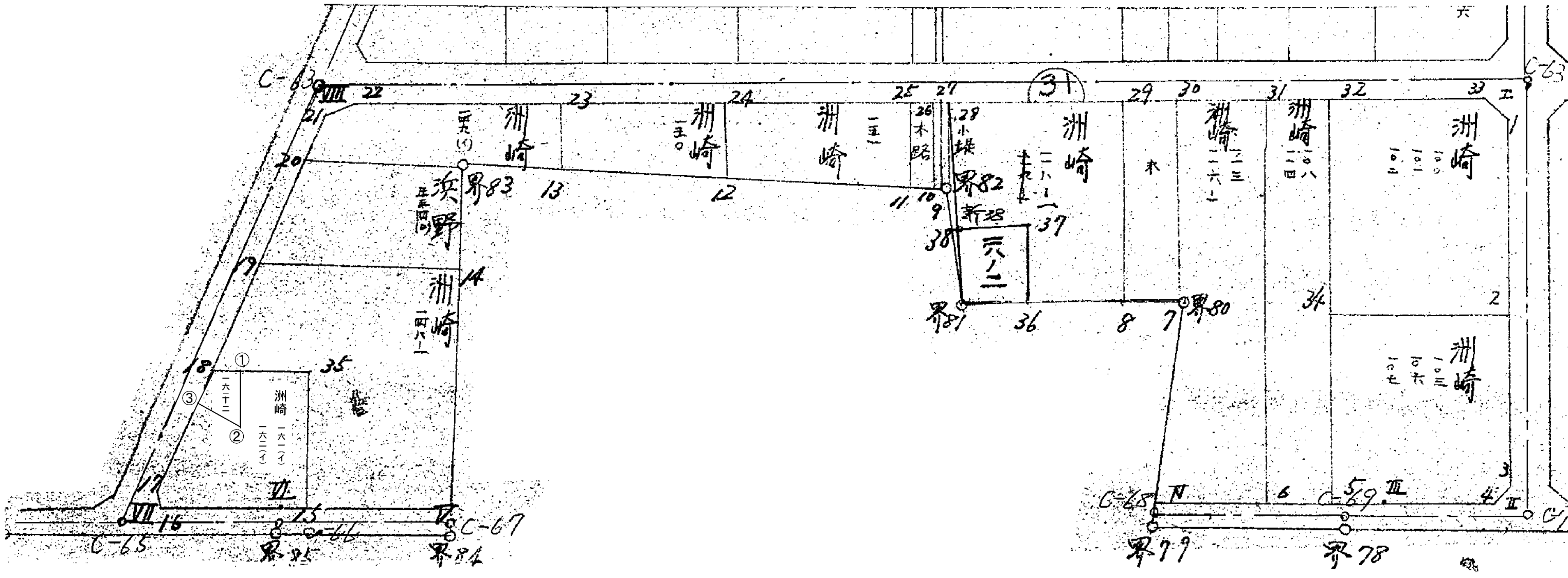


図 77 ~ 76 18.57t
 図 86 ~ 8t 271.4t



面積計算書

工
区

ブ
ロ
ック

21

計算者



精算者



備考

点	①	②	③	④	⑤	⑥	③ × ⑤	② × ⑥		
	X	X - (定数)	$X_{n-1} - X_{n+1}$	Y	Y - (定数)	$Y_{n-1} - Y_{n+1}$	+	-		
I	-152.854616	(-152.854) - 4.616	+ 8.268	-35387.817	(-35370) - 17.817	- 195.562		147.132786	902714412	
II	915.184	- 65.184	+ 67.718	370.000	- 0.008	+ 7.075		0.543344	461.176800	
III	922.534	- 72.534	+ 15.553	394.892	- 24.892	+ 53.432		387.145276	3875.709222	
IV	930.737	- 80.737	- 22.068	423.441	- 53.441	+ 33.341	1232.776988		2691.852317	
界 80	899.466	- 49.466	- 21.239	428.233	- 58.233	+ 37.957	1236.810657		1877.580962	
界 81	909.498	- 59.498	- 6.798	461.398	- 91.398	+ 40.581	621.323604		2414.488338	
界 82	892.668	- 42.668	+ 0.917	468.814	- 98.814	+ 81.476		90.612438	3476.417968	
界 83	910.415	- 60.415	+ 70.136	542.874	- 172.874	+ 60.474		12124.690864	3653.536710	
V	962.804	- 112.804	+ 59.851	529.288	- 159.288	+ 13.187		9533.546088	1488.899996	
VI	970.266	- 120.266	+ 13.170	556.073	- 186.073	+ 46.071		2450.581410	5540.774886	
VII	975.974	- 125.974	- 63.340	575.359	- 205.359	+ 9.497	1007.439060		1196.375078	
VIII	906.926	- 56.926	- 721.358	565.570	- 195.570	- 187.542	23733.98406		10676.015892	
							3832334377	24734.252206	11578.730084	26676.812277
							1078.082193		15098.082193	
							$\frac{1}{2} = 7649.041085$			

面積計算書

工
区

1

ブ
ロ
ック

31

計
算
者



精
算
者



備
考

点	①	②	③	④	⑤	⑥	③ × ⑤		② × ⑥	
	X	X-(定数)	$X_{n-1}-X_{n+1}$	Y	Y-(定数)	$Y_{n-1}-Y_{n+1}$	+	-	+	-
	洲山崎 100, 101, 102									
	-152	(-152850)		-35	(-35370)					
1	857.494	- 7.494	+ 31.160	386.971	- 16.971	- 12.289			528.816360	92.073766
2	886.623	- 36.623	+ 37.016	378.406	- 8.406	+ 18.216			311.156496	667.124568
34	894.510	- 44.510	- 24.123	405.187	- 35.187	+ 36.203	848.81600			1611.395530
32	862.500	- 12.500	- 39.047	414.609	- 44.609	- 14.492	1741.947623			181.150000
33	855.463	- 5.463	- 5.006	390.695	- 20.695	- 27.638	103.599190			150.986394
							2694.262794	839.972856	424.230160	2278.520078
							1854.289738			1854.289738
							$\frac{1}{2} = 927.144969$			
	洲山崎 108, 114									
	-152	(-152860)		-35	(-35390)					
32	862.500	- 2.500	+ 57.645	414.609	- 24.609	- 27.789			1418.585805	69.472500
5	923.076	- 63.076	+ 63.439	396.780	- 6.780	- 7.868			430.116420	496.281968
6	925.939	- 65.939	- 57.645	406.741	- 16.741	+ 27.789	965.034745			1832.378871
31	865.431	- 5.431	- 63.439	424.569	- 34.569	+ 7.868	2193.022791			42.731108
							3158.057736	1848.702225	565.754468	1875.109979
							1309.355511			1309.355511
							$\frac{1}{2} = 654.677555$			

面積計算書

工
区

1

ブ
ロ
ック

2/

計
算
者



精
算
者



備
考

103
106
107

点	①	②	③	④	⑤	⑥	③ × ⑤		② × ④	
	X	X-(定数)	X _{n-1} -X _{n+1}	Y	Y-(定数)	Y _{n-1} -Y _{n+1}	+	-	+	-
洲崎	103, 106, 107	(-152.880)			(-25.370)					
2	152.886.623	- 6.623	+ 18.765	35.378.406	- 8.406	- 34.615			157.654.630	229.255.145
3	913.265	- 33.265	+ 29.127	370.572	- 0.572	- 6.480			16,660.644	245.657.200
4	915.750	- 25.750	+ 9.811	371.926	- 1.926	+ 26.208			18.895.986	936.936.000
5	923.076	- 43.076	- 21.240	396.780	- 26.780	+ 38.261	518.807.200			1432.750.806
24	894.510	- 14.510	- 36.453	405.187	- 35.187	- 18.374	1282.671.711			266.606.740
							1851.478.911	178.241.160	711.419.085	2369.686.836
							1658.267.751			1658.267.751
							$\frac{1}{2} = 829.133.876$			
茶		(-152.860)			(-25.420)					
20	152.867.889	- 9.889	+ 27.827	35.438.016	- 18.016	- 17.449			501.331.232	163.828.661
7	899.658	- 39.658	+ 32.772	428.868	- 8.868	- 0.873			290.622.096	34.621.434
8	902.161	- 42.161	- 27.827	427.143	- 17.143	+ 17.449	487.038.261			736.667.289
29	871.831	- 11.831	- 32.772	446.317	- 26.317	+ 0.873	862.460.724			10.328.463
							1239.498.985	791.953.228	198.450.955	745.987.522
							547.545.657			547.545.657
							$\frac{1}{2} = 273.772.825$			

面積計算書

工
区

ブ
ロ
ック

3 /

計
算
者



測
算
者



備
考

113
116-1, 15-1

点	①	②	③	④	⑤	⑥	③ × ⑤		② × ⑥	
	X	X-(定数)	X _{n-1} -X _{n+1}	Y	Y-(定数)	Y _{n-1} -Y _{n+1}	+	-	+	-
洲崎 113, 116-1		(-152.860)			(-35.400)					
31	-152.865 431	-5.431	+56.550	-35.424 569	-24.569	-31.275			1389,376950	169,854525
6	925.939	-65.939	+65.306	406.741	-6.741	-1.128			440,227746	74,379192
IV	930.737	-70.737	-26.473	423.441	-23.441	+21.492	620,553593			1520,279604
界 80	899.466	-39.466	-31.079	428.233	-28.233	+5.427	877,453407			214,181982
7	899.658	-39.658	-30.077	428.869	-28.869	+9.783	868,262876			387,974214
30	869.389	-9.389	-34.227	438.016	-38.016	-4.299	1301,13632		40,363311	
							3667,443468	1829,604696	284,597028	2122,435800
							1837,838772			1837,838772
							1/2 = 918,919386	分筆後の座標なし		
洲崎 151		(-152.880)			(-35.470)					
25	-152.881 136	-1.136	+3.836	-35.477 935	-7.935	-34.910			30,438660	39,657760
11	893.134	-13.134	+19.545	474.168 470.761	-0.761	+24.320			14,873745	319,488880
12	900.681	-20.681	-3.836	502.255	-32.255	+34.910	123,730180			721,973710
24	889.298	-9.298	-19.545	505.671	-35.671	-24.320	697,189695		226,127360	
							820,919875	45,312405	265,785120	1041,392590
							775,607470			775,607470
							1/2 = 387,803735			

面積計算書

工
区

/

ブ
ロック

31

計
算
者



精
算
者



備
考

161
162

点	① X	② X-(定数)	③ $X_{n-1}-X_{n+1}$	④ Y	⑤ Y-(定数)	⑥ $Y_{n-1}-Y_{n+1}$	③ +	⑤ -	② +	×	④ -
	161 (A) 162 (A)										
35	-152.948222	-8.222 (-152940)	+17.221	-35.556987	-6.987 (-35550)	-20.695			120.323127		170.154270
15	968.914	-28.914	+22.044	551.228	-1.222	0.914			26.937768		26.427376
14	970.266	-30.266	+6.492	556.073	-6.073	+22.219			39.425916		672.480254
16	975.406	-35.406	+2.738	573.441	-23.441	+18.865			64.181458		667.934190
17	973.004	-33.004	-23.713	574.938	-24.938	-1.524	591.354794				50.298076
18	951.693	-11.693	-24.782	571.917	-21.917	-17.951	543.147074				207.901043
							1134.501888	250.868269	456.780825	1340.414444	
											883.633619
											883.633619
											分筆あり
											$\frac{1}{2} = 44.8168075$
25	-152.881136	-1.136 (-152880)	+4.653	-35.477935	-7.935 (-35470)	-31.503			36.921555		35.787408
11	893.951	-13.951	+19.545	474.168	-4.168	+24.320			81.463560		339.288320
12	900.681	-20.681	-4.653	502.255	-32.255	+31.503	150.082515				651.513543
24	889.298	-9.298	-19.545	505.671	-35.671	-24.320	697.189695				226.127360
							847.272210	118.385115	261.914768	990.801863	
							728.887075				728.887075
											$\frac{1}{2} = 364.4435475$

洲島

座標法面積計算 (162-2)

測点	X	Δx	Y	Δy	(+) F_1	(-) F_2
					$\Delta x \cdot \Delta y$	$\Delta x \cdot \Delta y$
18	+ 951.693		+ 571.917			
①		- 1.172		+ 1138.794		1222.66568
	+ 950.521		+ 566.877			
②		+ 10.505		+ 1130.649	11877.46745	
	+ 961.026		+ 563.772			
③		- 0.195		+ 1136.984		21711880
	+ 960.831		+ 573.12			
		- 9.138		+ 1145.129		1046610080
18	+ 951.693		+ 571.917			
-	-	-	-	-		
-	-	-	-	-		
-	-	-	-	-		
-	-	-	-	-		
-	-	-	-	-		
-	-	-	-	-		
-	-	-	-	-		
-	-	-	-	-		
-	-	-	-	-		
				$\bar{z} =$	11877.46745	1222.66568
				$F = (F_1) \sim (F_2) =$	140.099505	
計算者				$F / 2 =$	71.549752	
点検者				$\times 0.3025 =$	21.6438	

面積計算書

工区 1 / ブロック 2/ 計算者 精算者 備考 10140

点	① X	② X-(定数)	③ $X_{n-1}-X_{n+1}$	④ Y	⑤ Y-(定数)	⑥ $Y_{n-1}-Y_{n+1}$	⑦ +	⑧ -	⑨ +	⑩ -
VIII	-152.906.926	(-152.900) - 6.926	- 2.828	-35.565.570	(-35.560) - 5.570	- 3.159	15.741.960			21.879.234
22	906.079	- 6.079	+ 1.981	562.692	- 2.692	+ 0.281		5.332.952		1.708.199
21	908.907	- 8.907	+ 0.847	565.854	- 5.854	+ 2.878		4.755.797		25.634.346
							15.741.960	10.288.649		21.879.234
							5.463.311			5.463.311
							$\frac{1}{2} = 2731.6555$			
29	871.831	(-152.870) - 1.831	+ 22.577	446.317	(-35.430) - 16.317	- 35.515	368.388.909	65.020.965		
8	902.161	- 32.161	+ 34.641	437.143	- 7.143	+ 5.076	207.400.663			163.249.236
36	906.472	- 36.472	- 6.218	451.393	- 21.393	+ 17.435	133.021.674			635.889.320
37	895.943	- 25.943	- 7.040	454.578	- 24.578	+ 14.449	173.029.120			394.616.920
38	899.432	- 29.432	- 3.275	465.833	- 35.833	+ 14.236	117.353.075			418.993.952
82	892.668	- 22.668	- 19.848	468.814	- 38.814	+ 6.825	770.380.272			154.707.100
28	879.584	- 9.584	- 20.837	472.658	- 42.658	- 22.497	888.864.746			215.611.248
							2082.648.887	615.829.572		280.639.413
							1466.819.315			1466.819.315
							$\frac{1}{2} = 733.409.657.5$			

面積計算書

工区

1

ブロック

31

計算者



積算者



備考

点	①	②	③	④	⑤	⑥	③ × ⑤		② × ⑥
	X	X-(定数)	X _{n-1} -X _{n+1}	Y	Y-(定数)	Y _{n-1} -Y _{n+1}	+	-	+ -
洲崎 150		(-152880)			(-35500)				
23	-152896.587	-16.587	-17.419	-35530.438	-30.438	-21.772	530.199522		361.132164
24	889.298	+9.298	+4.094	505.671	+5.671	+28.183		23.219074	262.045534
12	900.681	+20.681	+17.419	502.255	+2.255	+21.772		39.279845	450.266732
13	906.717	-26.717	-4.094	527.443	-27.443	+28.183	112.351642		752.965211
							642.551164	62.496919	623.177698
							580.054248		580.054245
							<u>1/2 290.0271225</u>		
洲崎 118 118~2		(-152890)		(-35)	(-35450)				
37	-895.743	-5.943	+7.040	-454.578	-4.578	-14.440		32.229120	85.816920
36	906.472	-16.472	+13.555	451.393	-1.393	+6.820		18.882115	112.339040
81	907.498	-19.498	-7.040	461.398	-11.398	+14.440	80.241920		281.551120
38	899.432	-9.432	-13.555	465.833	-15.833	-6.820	214.816315		64.326240
							294.858235	51.111235	150.143160
							243.747000		243.747000
							<u>1/2 = 121.873500</u>		

面積計算書

工
区

ブ
ロ
ック

2/1

計
算
者



結
算
者



備
考

点	① X	② X-(定数)	③ $X_{n-1}-X_{n+1}$	④ Y	⑤ Y-(定数)	⑥ $Y_{n-1}-Y_{n+1}$	⑦ +	⑧ -	⑨ +	⑩ -
水路										
25	752881.136	⁽⁻¹⁵²⁸⁸⁰⁾ - 1.136	- 13.803	35477.925	⁽⁻³⁵⁴⁷⁰⁾ - 7.925	+ 0.409	107.526805			0.464624
26	880148	- 0.148	+ 11.998	474.577	- 4.577	- 7.174		54.914846	1.061752	
10	893134	- 13.134	+ 13.803	470.761	- 0.761	- 0.409		10.504082	5.371806	
11	893961	- 13.961	- 11.998	474.168	- 4.168	+ 7.174	50.007664			100.084474
							157.534469	65.418929	6.433558	100.549098
							94.115540			94.115540
							$\bar{X} = 47.057770$			
小堤										
26	752880.148	⁽⁻¹⁵²⁸⁷⁰⁾ - 10.148	- 13.268	35474.577	⁽⁻³⁵⁴⁶⁰⁾ - 14.577	+ 2.857	173.407636			28.992826
27	879866	- 9.866	+ 12.753	473.618	- 13.618	- 4.790		173.670354	47.258140	
9	892901	- 22.901	+ 13.268	469.787	- 9.787	- 2.857		129.863916	65.428157	
10	893134	- 23.134	- 12.753	470.761	- 10.761	+ 4.790	127.225033			110.811860
							320.642669	303.524270	112.686297	129.804696
							27.118399			27.118399
							$\bar{X} = 13.5591995$			

面積計算書

工
区

/

プロ
ック

31

計
算
者



補
算
者



点	①	②	③	④	⑤	⑥	③ × ⑤	③ × ⑤		
	X	X-(定数)	$X_{n-1}-X_{n+1}$	Y	Y-(定数)	$Y_{n-1}-Y_{n+1}$	+	-		
洲崎 149(1)										
23	-152 896 587	- 6.587	+ 0.638	-35 530 439	- 10.438	- 35.249		6.659 004	232.185163	
13	906 717	- 16.717	+ 13.828	527 043	- 7.443	+ 12.436		102.921 804	207.892612	
界 83	910 415	- 20.415	+ 9.835	542 824	- 22.874	+ 39.492		224.965770	806.229180	
20	916 552	- 26.552	- 1.508	566 935	- 46.935	+ 22.977	70.7777980		610.085304	
21	908 907	- 18.907	- 10.473	565 851	- 45.851	- 4.243	480.197523		80.222401	
22	906 079	- 16.079	- 12.320	562 692	- 42.692	- 35.413	525.965440		569.405627	
							1076.940945	334.547038	881.813171	1624.207096
							742.393905		742.393905	
							$Y_2 = 371.1969525$			
淡野 534(2)										
界 83	-152 910 445	- 0.415	+ 9.346	542 874	- 12.874	- 28.076		120.320 404	11.651540	
14	925 898	- 15.898	+ 23.516	538 829	- 8.859	+ 26.524		208.328244	421.678552	
19	933 931	- 23.931	- 9.346	539 398	- 39.398	+ 28.076	368.213708		671.886756	
20	916 552	- 6.552	- 23.516	566 935	- 36.935	- 26.524	868.563460		173.785248	
							1236.777168	328.649648	185.436788	1093.565308
							908.128520		908.128520	
							$Y_2 = 454.064260$			

面積計算書

工
区

/

ブ
ロック

3
31

計
算
者



積
算
者



考

点	①	②	③	④	⑤	⑥	③ × ⑤	② × ⑥
	X	X-(定数)	$X_{n-1}-X_{n+1}$	Y	Y-(定数)	$Y_{n-1}-Y_{n+1}$	+	-
	洲崎 148-1							
14	-152 925.898	(-152 920) - 5.898	+ 28.873	-35 538.859	(-35 520) - 18.859	- 40.110	544.515907	236.568780
▽	962 804	- 42.804	+ 43.016	529 288	- 9.288	+ 12.363	399.532.608	529.185852
15	968 914	- 48.914	- 14.584	551 222	- 31.222	+ 27.699	455.341608	1354.868886
35	948 220	- 28.220	- 17.221	556 987	- 36.987	+ 20.695	636.953127	584.012900
18	951 693	- 31.693	- 14.289	571 917	- 51.917	+ 12.411	741.842013	393.341823
19	933 931	- 13.931	- 25.795	569 398	- 49.398	- 33.058	1274.221410	460.530998
							3108.358198	944.048515
							2164.309683	697.099778
								2861.409461
								2164.309683
							$\frac{1}{2} = 1082.1548415$	

面積計算書

工
区

1

ブ
ロ
ック

31

計
算
者



精
算
者



備
考

点	①	②	③	④	⑤	⑥	③ × ⑤	② × ④
	X	X-(定数)	X _{n-1} -X _{n+1}	Y	Y-(定数)	Y _{n-1} -Y _{n+1}	+	-
27	-152 879.866	(-152870) - 9.866	-13.317	-35 473.618	(-35460) - 13.618	+ 2.871	181.350906	28.325286
28	879.584	- 9.584	+ 12.802	472.658	- 12.658	- 4.804	162.047716	46.041536
界 82	892.668	- 22.668	+ 13.317	468.814	- 8.814	- 2.871	117.376038	65.079828
9	892.901	- 22.901	- 12.802	469.787	- 9.787	+ 4.804	125.293174	110.016404
							306.644080	279.423754
							27.220326	111.121364
								138.341690
								27.220326
								<u>1/2 = 13.610163</u>
角切								
I	-152 854.616	(-152850) - 4.616	+ 2.031	-35 387.817	(-35380) - 7.817	- 3.724	15.876327	17.189984
1	857.494	- 7.494	+ 0.847	386.971	- 6.971	+ 2.878	5.904437	21.567732
33	855.463	- 5.463	- 2.878	390.695	- 10.695	+ 0.846	30.780210	4.621698
							30.780210	21.780764
								17.189984
								26.189430
								8.999446
								8.999446
								<u>1/2 = 4.499723</u>

面積計算書

工
区

/

ブ
ロ
ック

31

計
算
者



精
算
者



考

点	①	②	③	④	⑤	⑥	③ ×	⑤	② ×	④
	X	X-(定数)	$X_{n-1}-X_{n+1}$	Y	Y-(定数)	$Y_{n-1}-Y_{n+1}$	+	-	+	-
角切										
II	-152 915.184	(-152910) - 5.184	+ 2.485	-35 370.008	(-35370) - 0.008	+ 1.354		0.019880		7.019136
4	915.750	- 5.750	- 1.919	371.926	- 1.926	+ 0.564	3.695994			3.243000
3	913.265	- 3.265	- 0.566	370.572	- 0.572	- 1.918	0.323752		6.262270	
							4.019746	0.019880	6.262270	10.262136
							3.999866			3.999866
							$\frac{1}{2} = 1.999933$			
VII	-152 975.974	(-152970) - 5.974	- 2.402	-35 575.359	(-35570) - 5.359	+ 1.497	12.872318			8.943078
17	973.004	- 3.004	- 0.568	574.938	- 4.938	- 1.918	2.804784		5.761672	
16	975.406	- 5.406	+ 2.970	573.441	- 3.441	+ 0.421		10.219770		2.275926
							15.677102	10.219770	5.761672	11.219004
							5.457332			5.457332
							$\frac{1}{2} = 2.728666$			

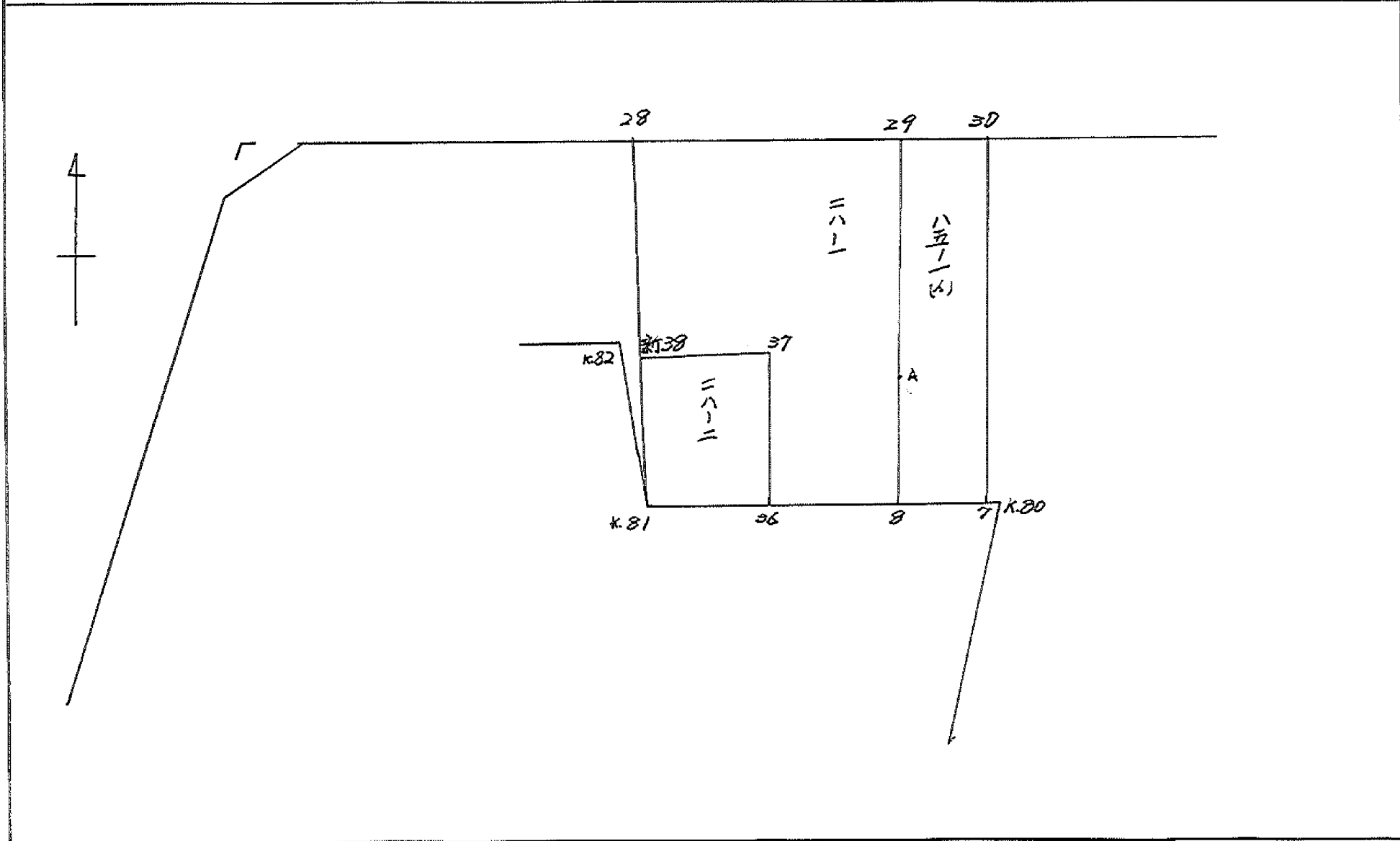
計年月日	計算者	檢査者
------	-----	-----

B. No. 31

各筆面積計算書

地番	算式	隅切	地積	摘要
100	}			
101				
102			927.14	
103	}			
106				
107			829.13	
108				
114			654.67	
113				
116-1			918.91	
水			273.77	
118-1			733.40	720.55
118-2			121.87	118.55
小堤			13.61	} 43.33
			13.55	
水路			47.05	
151			364.44	
150			290.02	
149(A)			371.19	
534(B)			454.06	
148-1			1082.15	
161(A)				
162(A)			441.81	
		4.49		
		1.99		
		2.72		
		2.73		
		1173	7536.77	計 7548.70
				全 7549.04
				差 0.34

画地略図	工区	/	ブロック	31	記入者	点検者
------	----	---	------	----	-----	-----



面積計算書

工区

1

ブロック

31

計算者

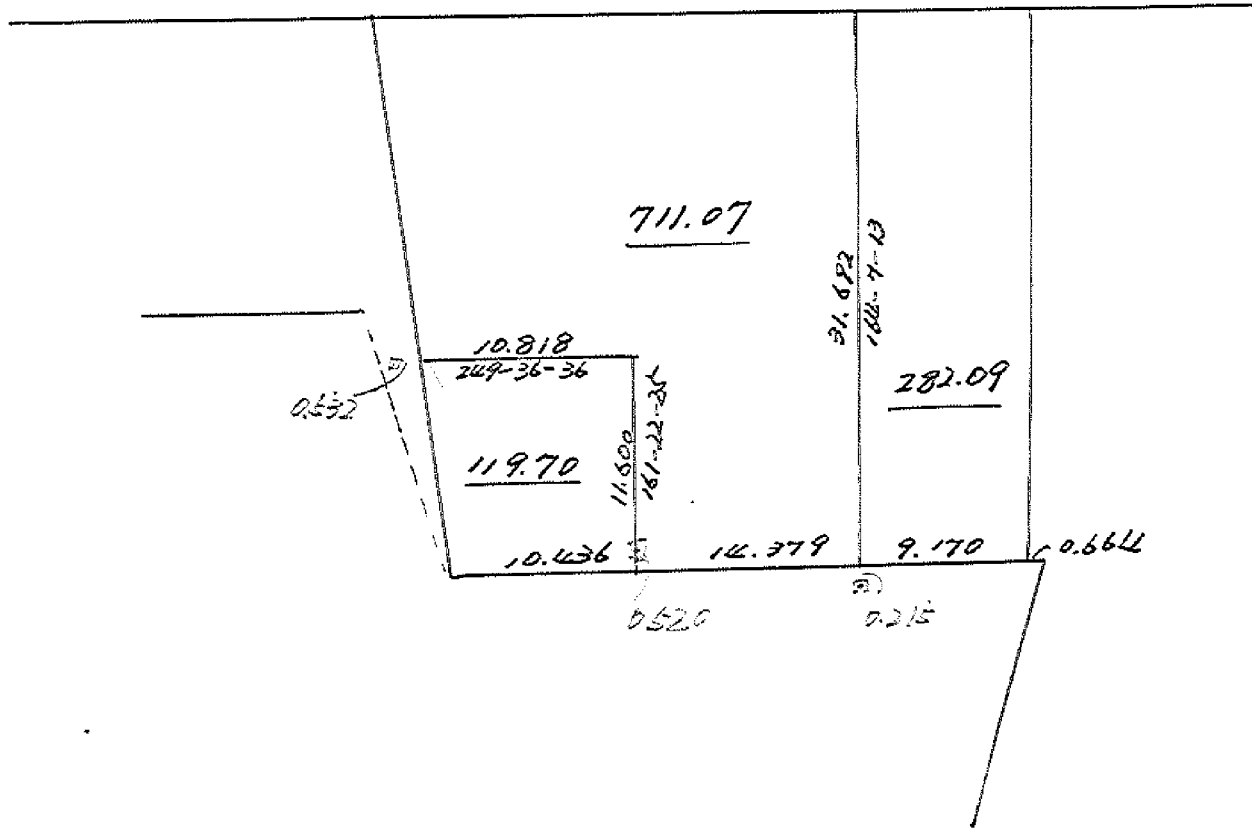
精算者

備考

三井

118-1

点	①	②	③	④	⑤	⑥	③ × ⑤		② × ⑥	
	X	X - (定数)	X _{n-1} - X _{n+1}	Y	Y - (定数)	Y _{n-1} - Y _{n+1}	+	-	+	-
28	152.899.584	152.800.000	-27.422	35.472.658	35.400.000	-18.937	1992.427676			1507.082208
29	871.831		+22.577	446.317		-35.515				1045.698909
8	902.161		+34.641	437.143		+5.076				1286.670665
36	906.472		-6.218	451.393		+17.435	319.561674			1268.232449
37	895.943		-7.219	454.578		+13.861	393.998582			518.569236
新38	899.253		-16.959	465.254		+18.080	1067.490186			1856.339320
							3773.478118			1329.865923
							1441	108546		1794.494740
							1441	108546		5499.268739
										1441
										108546
										$\frac{1}{2} \times 720 \times 55$
										三井 118-2
新38	152.899.253	152.800.000	-13.555	35.465.254	35.400.000	-6.820	884.517970			676.905460
37	895.943		+7.219	454.578		-13.861	393.998582			1329.865923
36	906.472		+13.555	451.393		+6.820	696.632115			726.139040
新31	909.498		-7.219	461.398		+13.861	443.232162			1517.751778
							1327.150132	1090.630697	2006.771387	2249.890818
							237	119435	237	119435
										$\frac{1}{2} \times 118 \times 55$



面積計算書

工区

1

ブロック

3/

計算者



精算者



備考

118-1

点	①	②	③	④	⑤	⑥	③ × ⑤		② × ⑥	
	X	X-(定数)	X _{n-1} -X _{n+1}	Y	Y-(定数)	Y _{n-1} -Y _{n+1}	+	-	+	-
29	⁻¹⁵² 871.831	^{-152.870} 1.831	+ 22.729	⁻³⁵ 446.317	^{-35.430} 16.317	- 25.012			370.869093	64.106972
8	902.313	22.313	+ 34.645	437.646	7.646	+ 5.092			264.895670	184.537796
36	906.476	36.476	- 68.29	451.409	21.409	+ 17.468	146.202061			637.162768
37	895.484	25.484	- 7.223	455.114	25.114	+ 13.245	181.398422			352.825980
新38	899.253	29.253	- 15.902	465.254	35.254	+ 17.544	560.538602			513.214632
20	879.584	9.584	- 27.422	472.658	42.658	- 12.927	1169.767676		181.492208	
							2057.906759	635.764763	245.599180	1667.741176
							1422.141996			1422.141996
									1/2 = 711.070998	
									分筆後の座標なし	

面積計算書

工区 / ブロック 31 計算者 [署名] 精算者 [署名] 備考 85-1(1) 118-2

二階上

二階下

階	①	②	③	④	⑤	⑥	③ × ⑤		② × ⑥	
	X	X-(定数)	X _{n-1} -X _{n+1}	Y	Y-(定数)	Y _{n-1} -Y _{n+1}	+	-	+	-
	-152	-152,800			-35,400					
30	869.389	69.389	+ 27.827	439.016	39.016	- 17.449			1057.97122	1210.76866
7	899.658	99.658	+ 32.924	428.868	38.868	- 9.370			950.45007	36.873460
8	902.313	102.313	- 27.827	437.646	37.646	+ 17.449	1027.57524			1726.25953
29	871.831	71.831	- 32.924	446.317	46.317	+ 0.370	1524.94090			26.577470
							2572.516150	-2080.321264	1247.642121	1811.837007
							564.194886			564.194886
							$\frac{1}{2} = 282.09$			
37	895.484	95.484	+ 7.223	455.114	5.114	- 13.845			36.938422	1321.975980
36	906.476	106.476	+ 14.014	451.409	1.409	+ 6.284			19.745726	669.095184
K.81	909.498	109.498	- 7.223	461.398	11.398	+ 13.845	82.327754			1515.999810
38	899.253	99.253	- 14.014	465.254	15.254	- 6.284	213.769556			122.705852
							296.097310	-56.684148	1946.681832	2185.094994
							239.413162			239.413162
							$\frac{1}{2} = 119.70$			