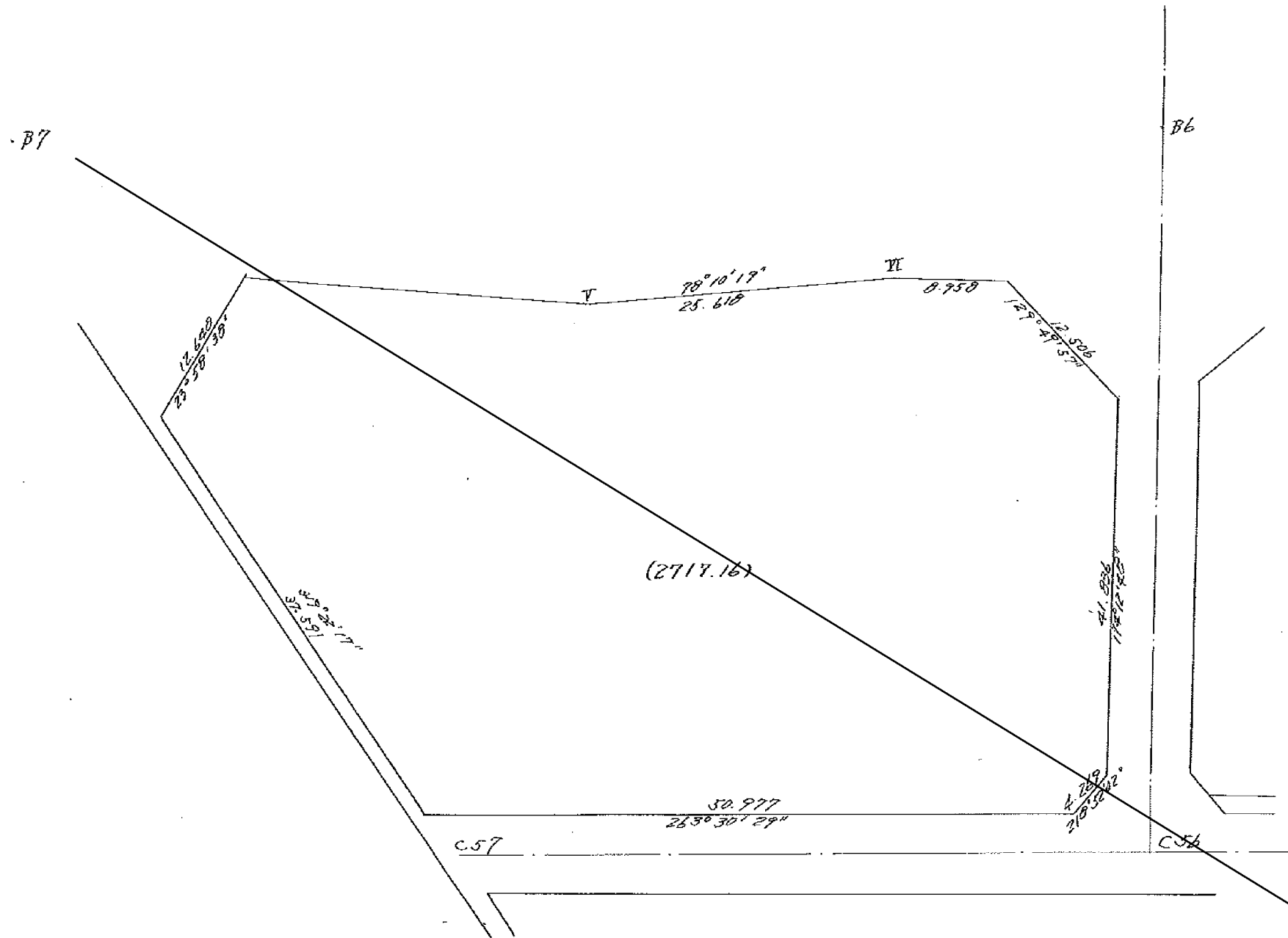
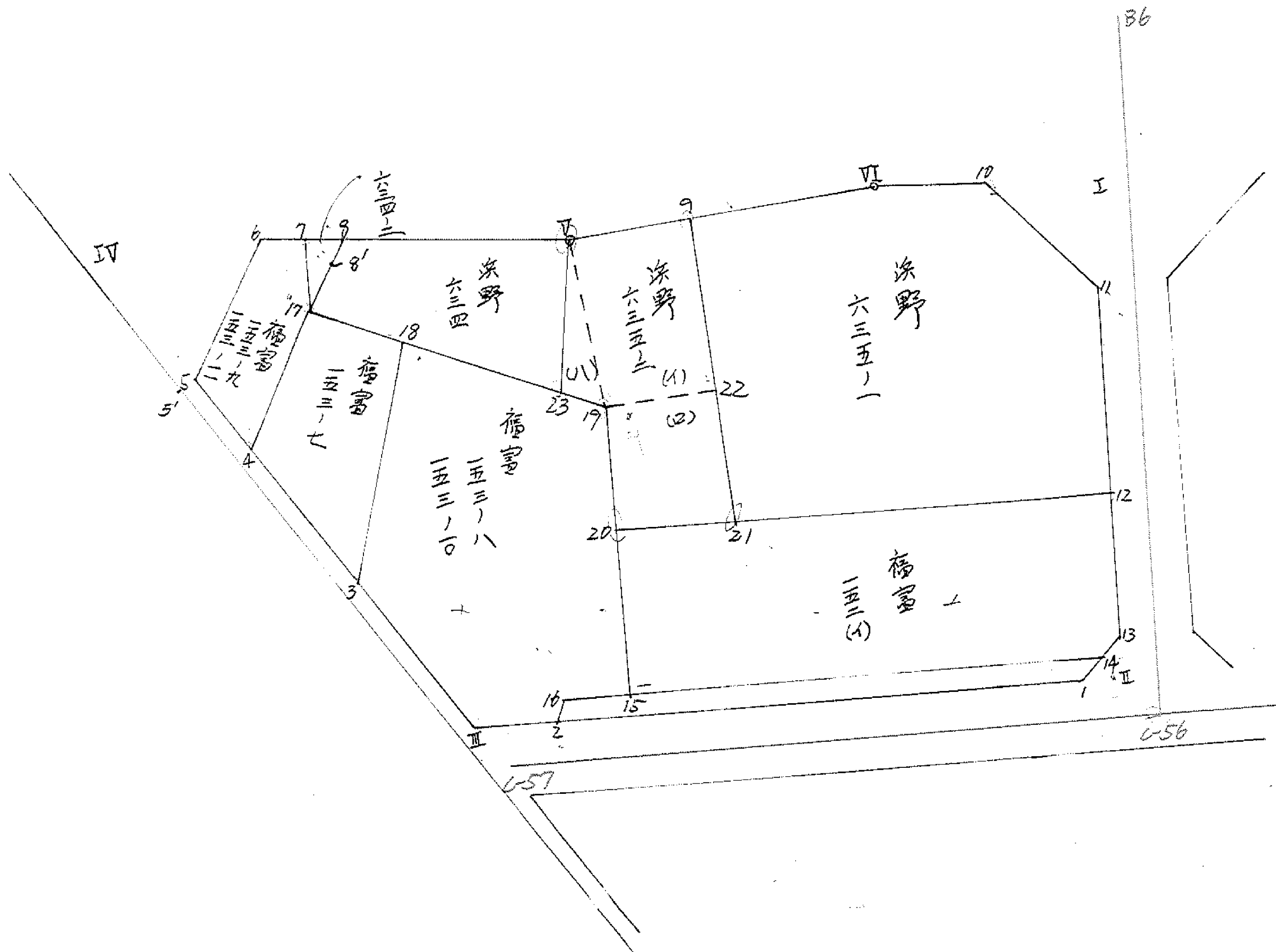


1-18





面積計算書

工
区

1

ブ
ロ
ック

18

計
算
者



精
算
者



備
考

点	①	②	③	④	⑤	⑥	③ × ⑤	② × ⑥		
	X	X-(定数)	$X_{n-1} - X_{n+1}$	Y	Y-(定数)	$Y_{n-1} - Y_{n+1}$	+	-		
I	-152 745.699	(-152740) - 5.699	+ 40.279	-35 758.787	(-35750) - 8.787	- 21.874		353,931,573	124,659,926	
II	787.322	- 47.322	+ 47.727	754.569	- 4.569	+ 49.413		218,064,663	2338,321,986	
III	793.426	- 53.426	- 33.620	808.200	- 58.200	+ 87.713	1256,684,000		4686,154,738	
IV	753.702	- 13.702	- 41.132	842.282	- 92.282	- 6.683	3795,743,224		91,570,466	
V	752.294	- 12.294	- 6.659	801.517	- 51.517	- 65.839	343,051,703		809,424,666	
VI	747.043	- 7.043	- 6.595	776.443	- 26.443	- 42.730	174,391,585		300,947,390	
							6269,870,512	571,996,236	1326,602,448	7024,476,724
							5677,874,276		5677,874,276	
							$\frac{1}{2} = 2848,937,138$			
							2円 = 0.521			
							- 4.263			
							<u>2844.153</u>			

面積計算書

工
区

1

ブ
ロ
ック

18

計
算
者



精
算
者



備
考

点	①	②	③	④	⑤	⑥	③	×	⑤	②	×	⑥	
	X	X-(定数)	$X_{n-1}-X_{n+1}$	Y	Y-(定数)	$Y_{n-1}-Y_{n+1}$	+		-	+		-	
	淡野 635-1												
10	⁻¹⁵² 746.373	⁽⁻¹⁵²⁷⁴⁰⁾ -6.373	+ 7.361	⁻³⁵ 767.507	⁽⁻³⁵⁷⁵⁰⁾ -17.507	-18.538							
11	754.404	-14.404	+ 26.144	757.905	- 7.905	-11.442							
12	777.537	- 32.537	+ 21.674	756.067	- 6.067	+ 29.275							
21	776.078	- 36.078	- 22.293	787.180	- 37.180	+ 35.662	828.85370					1286.613636	
9	750.244	- 10.244	- 29.035	791.729	- 41.729	- 10.737	1211.605515					109.989828	
VI	747.043	- 7.043	- 3.851	776.443	- 26.443	- 26.220	101.831993					170.581460	
							2142.287248					563.895290	2299.134311
							1675.239020						1675.239021
							$\frac{1}{2} = 837.619510$						
							- 0.1840						
							837.4355						

面積計算書

工区

1

ブロック

18

計算者



積算者

FRP

備考

点	①	②	③	④	⑤	⑥	③ × ⑤	② × ⑥
	X	X-(定数)	$X_{n-1} - X_{n+1}$	Y	Y-(定数)	$Y_{n-1} - Y_{n+1}$	+ -	+ -
12	772.537	-2.537	+7.128	756.067	-6.067	-47.246		43.245576
13	784.337	-14.337	+13.461	756.871	-4.871	+0.143		65.568531
14	785.998	-15.998	+6.145	756.210	-6.210	+0.735		38.160450
15	790.482	-20.482	-8.787	795.606	-45.606	+40.907		837.857174
20	777.209	-7.209	-17.945	797.117	-07.117	-39.539		285.036651
								1246.345679
								146.974557
								392.214753
								1091.585895
								1099.371142
								$\frac{1}{2} = 549.685571$
<u>14</u>	<u>785.998</u>	<u>-5.998</u>	<u>-3.043</u>	<u>756.210</u>	<u>-6.210</u>	<u>*43.520</u>		<u>261.03296</u>
<u>1</u>	<u>787.661</u>	<u>-7.661</u>	<u>+6.669</u>	<u>757.550</u>	<u>-7.550</u>	<u>+45.321</u>		<u>50.350950</u>
<u>2</u>	<u>792.667</u>	<u>-12.667</u>	<u>+3.043</u>	<u>801.531</u>	<u>-51.531</u>	<u>+43.520</u>		<u>347.204181</u>
<u>16</u>	<u>791.104</u>	<u>-11.104</u>	<u>-6.669</u>	<u>801.070</u>	<u>-51.070</u>	<u>-45.321</u>		<u>551.267840</u>
								<u>177.421233</u>
								<u>340.585830</u>
								<u>503.244384</u>
								<u>898.472021</u>
								<u>361.966860</u>
								<u>227.772183</u>
								<u>764.271344</u>
								<u>812.300800</u>
								<u>134.194677</u>
								$\frac{1}{2} = 67.0973385$

面積計算書

工
区

ブ
ロ
ック

18

計
算
者

精
算
者

備
考

点	①	②	③	④	⑤	⑥	③ × ⑤		② × ⑥	
	X	X-(定数)	$X_{n-1} - X_{n+1}$	Y	Y-(定数)	$Y_{n-1} - Y_{n+1}$	+	-	+	-
淡野 635-2										
9	-152 750.244	- 0.244	+ 23.784	-35 771.729	- 4.729	- 14.337		112.474536		2498228
21	776.078	26.078	+ 26.965	787.180	0.180	+ 5.388		4.853700		140.508264
20	777.209	27.209	- 9.883	777.117	- 10.117	+ 11.170	99.986311			304.468700
19	766.195	16.195	- 71.489	798.370	- 11.870	+ 2.010	130.629930			48.746950
23	765.720	15.720	- 13.901	800.127	- 13.127	+ 3.147	187.478027			49.470840
V	752.294	2.294	- 15.476	801.517	- 14.517	- 8.398	224.665092			19.265012
							637.759760	117.328236	22.763240	543.194764
							520.431524			520.431524
							1/2 260.215762			
(1)										
9	-152 750.244	- 0.244	+ 12.287	-35 771.729	- 2.729	- 12.313		29.531223		3.004372
27	764.581	14.581	+ 15.951	789.204	0.204	+ 6.641		3.254004		96.832421
19	766.195	16.195	- 12.289	798.370	- 9.370	+ 12.313	115.129190			199.409035
V	752.294	2.294	- 15.951	801.517	- 12.517	- 6.641	199.658667			15.234454
							314.787857	36.785227	18.238826	296.241456
							278.002630			278.002630
							1/2 139.001315			

面積計算書

Ⅰ
区

ブロック

18

計算者

精算者

備考

点	①	②	③	④	⑤	⑥	③ × ⑤		② × ⑥	
	X	X-(定数)	$X_{n-1} - X_{n+1}$	Y	Y-(定数)	$Y_{n-1} - Y_{n+1}$	+	-	+	-
法野 634										
		(-152752)			(-35800)					
7	152.752.274	- 0.274	+ 12.579	-35801.517	- 1.517	- 20.909		19.105098		6.147246
22	765.720	- 12.720	+ 7.329	800.127	- 0.127	+ 21.162		0.930783		270.342640
17	759.623	- 7.623	- 12.579	822.679	- 22.679	+ 20.909	285.619326			159.389307
8	753.126	- 1.126	- 7.329	821.036	- 21.036	- 21.162	284.172844		23.828412	
							439.792170	- 20.035881	29.975658	449.731947
							419.756289			419.756289
							$\frac{1}{2}$ 209.8781445	- R _A 0.614	- 209.264	
水稲富 153-7										
		(-152757)			(-35815)					
18	152.741.644	- 2.644	+ 22.355	-35815.201	- 0.201	- 4.657		4.493355		12.313108
3	781.978	- 22.978	+ 9.680	818.022	- 3.022	+ 12.005		29.101860		275.850890
4	771.274	- 12.274	- 22.355	827.206	- 12.206	+ 4.657	272.865130			57.160018
17	759.623	- 0.623	- 9.680	822.679	- 7.679	- 12.005	73.948770		7.479115	
							346.812900	33.575215	19.792223	333.010908
							313.218685			313.218685
							$\frac{1}{2}$ 156.6093425			

面積計算書

I
区

ブロック

18

計算者

精算者

備考

項	①	②	③	④	⑤	⑥	③ × ⑤	② × ⑥
	X	X-(定数)	$X_{n-1} - X_{n+1}$	Y	Y-(定数)	$Y_{n-1} - Y_{n+1}$	+	-
18	152 761.644	(-152 760) 1.644	- 15.783	-35 815.201	(-35 795) 20.201	- 19.652	318.832383	32.307888
19	766.175	- 6.175	+ 15.565	798.370	- 3.370	- 18.084	52.454650	112.030380
20	777.209	- 17.209	+ 24.287	797.117	- 2.117	- 2.764	51.415579	47.565676
15	790.482	- 30.482	+ 13.875	795.606	- 0.606	+ 3.953	8.420370	120.495346
16	791.104	- 31.104	+ 2.185	801.070	- 6.070	+ 5.925	13.262950	184.291200
2	792.667	- 32.667	+ 7.322	801.531	- 6.531	+ 7.180	15.164982	232.915710
III	798.426	- 33.426	- 10.689	808.200	- 13.200	+ 16.491	141.094800	441.323200
3	781.978	- 21.978	- 31.782	818.022	- 23.022	+ 7.001	731.685204	153.867978
							1191.612387	1242.798400
							7491.900987	191.903944
							1050.894056	1242.798400
							7351.022956	1050.894456
(II)						$\frac{1}{2}$	525.047228	
V	(-152 752) 274	- 0.274	+ 0.675	-35 801.517	(-35 798) 3.517	- 1.757	1.670575	0.516558
A	766.175	- 14.175	+ 18.426	798.370	- 0.370	- 1.390	4.967620	19.731050
23	765.720	- 13.720	- 13.901	800.127	- 2.127	+ 2.147	29.567427	43.176840
							29.567427	6.638195
							22.929232	22.929232
						$\frac{1}{2}$	11.264616	

面積計算書

工
区

ブ
ロ
ック

18

計
算
者

精
算
者

備
考

点	①	②	③	④	⑤	⑥	③ × ⑤	② × ⑥
	X	X-(定数)	$X_{n-1} - X_{n+1}$	Y	Y-(定数)	$Y_{n-1} - Y_{n+1}$	+	-
	153-9 153-11	(-152750)			(-35820)			
6	152753.339	- 3.339	- 11.698	827.537	- 7.537	- 9.547	88.167826	31.860738
7	753.198	- 3.198	+ 6.284	823.135	- 3.135	- 4.858	19.700340	15.535884
17	759.623	- 9.623	+ 18.076	822.679	- 2.679	+ 4.071	49.425606	37.175233
4	771.274	- 21.274	+ 5.273	827.206	- 7.206	+ 9.998	37.997278	212.677452
5	764.896	- 14.896	- 17.935	832.677	- 12.677	+ 0.331	727.361995	4.930576
							315.529821	106.123182
							209.406639	209.406639
							1/2 104.7033195	
	634-7	(-152750)			(-35821)			
8	152753.126	- 0.126	+ 6.425	821.036	- 0.036	- 0.456	0.291300	0.057456
17	759.623	- 6.623	+ 0.072	822.679	- 1.679	+ 2.099	0.120882	12.901677
7	753.198	- 0.198	- 6.497	823.135	- 2.135	- 1.643	13.871095	0.325314
							13.871095	0.352188
							13.518707	13.901677
							1/2 6.7594535	13.518707

面積計算書

工区

1

ブロック

18

計算者



精算者



備考

点	①	②	③	④	⑤	⑥	③ × ⑤		② × ⑥		
	X	X-(定数)	X _{n-1} -X _{n+1}	Y	Y-(定数)	Y _{n-1} -Y _{n+1}	+	-	+	-	
	福富										
19	⁻¹⁵² 766.175	⁻¹⁰ 153-8 (-152760) - 6.175	+ 29.451	⁻³⁵ 798.370	(-35790) - 8.370	- 19.418			246.504870	120.294510	
15	790.482	- 30.482	+ 24.909	775.606	- 5.606	+ 2.700			137.639854		82.301400
16	791.104	- 31.104	+ 2.185	801.070	- 11.070	+ 5.925			24.187950		184.291200
2	792.667	- 32.667	+ 2.322	801.531	- 11.531	+ 7.130			26.774982		232.915710
Ⅲ	793.426	- 33.426	- 10.689	808.200	- 18.200	+ 7.491	174.539800				551.228166
3	781.978	- 21.978	- 32.395	818.022	- 28.022	+ 6.824	907.992690				149.977872
18	761.031	- 1.031	- 15.783	815.024	- 25.024	- 19.652	394.753192			20.261212	
							1497.266282	437.107656	140.555722	1200.714348	
							1060.158626				1060.158626
							1/2 = 530.079313				
	南切Ⅳ										
Ⅳ	⁻¹⁵² 753.702	(-152750) - 3.702	- 11.557	⁻³⁵ 842.282	(-35820) - 22.282	- 5.140	257.513074			19.028280	
6	753.339	- 3.339	+ 11.194	827.537	- 7.537	- 9.605			84.369178	32.071095	
5	764.896	- 14.896	+ 0.363	832.677	- 12.677	+ 14.745			4.601751		219.641520
							257.513074	88.449279	51.099375	219.641520	
							157.348145	88.970927			168.542145
							1/2 = 79.6740725				168.542145

1/2 = 84.2710725
- 0.3885
83.8825

面積計算書

工区

1

ブロック

18

計算者



精算者



備考

点	①	②	③	④	⑤	⑥	③ × ⑤		② × ⑥	
	X	X-(定数)	$X_{n-1} - X_{n+1}$	Y	Y-(定数)	$Y_{n-1} - Y_{n+1}$	+	-	+	-
	角切 I									
I	⁻¹⁵² 745.697	⁽¹⁻¹⁵²⁷⁴⁰⁾ - 5.697	+ 8.011	⁻³⁵ 758.787	⁽⁻³⁵⁷⁵⁰⁾ - 8.787	- 9.604			70.392657	54.733196
11	754.404	- 14.404	+ 0.694	757.905	- 7.905	+ 8.722			5.486070	128.631688
10	746.393	- 6.393	- 8.705	767.509	- 17.509	+ 0.882	152.415845			5.638626
							152.415845	75.878727	54.733196	131.270314
							76.537118			76.537118
							$\frac{1}{2} = 38.268559$			
	角切 II									
13	⁻¹⁵² 784.337	⁽⁻¹⁵²⁷⁸⁰⁾ - 4.337	- 0.337	⁻³⁵ 754.871	⁽⁻³⁵⁷⁵⁰⁾ - 4.871	- 2.981	1.651269			12.928597
II	787.322	- 7.322	+ 3.324	754.569	- 4.569	+ 2.679			15.187356	19.615638
1	787.661	- 7.661	- 2.985	757.550	- 7.550	+ 0.302	22.536750			2.313622
							24.188019	15.187356	12.928597	21.929260
							9.000663			9.000663
							$\frac{1}{2} = 4.5003315$			
							- 0.023			
							4.4803			

面積計算書						工区	ブロック	計算者	精算者	備考
						/	18			全
点	①	②	③	④	⑤	③ × ⑤		② × ⑥		
	X	X-(定数)	X _{n-1} -X _{n+1}	Y	Y-(定数)	Y _{n-1} -Y _{n+1}	+	-	+	-
	-152.700	-152.700			-35.700					
11	754.404	54.404	+ 37.944	-35.757.905	57.905	- 12.638		2197.107320	687.557.752	
13	784.337	84.337	+ 33.257	754.871	54.871	- 0.255		1824.904.847	29.939.635	
I	787.661	87.661	+ 9.089	757.550	57.550	+ 53.229		523.071.950		4674.873.469
II	793.426	93.426	- 22.765	808.200	108.200	+ 75.127	2463.173000			7018.815.102
5	764.896	64.896	- 40.087	832.677	132.677	+ 19.337	5318.622899			1252.893.952
6	753.339	53.339	- 11.782	827.537	127.537	- 11.970	1502.640.930		638.467.830	
8	753.114	53.114	- 1.045	820.707	120.707	- 26.020	126.1388.15		1382.026.280	
V	752.294	52.294	- 6.071	801.517	101.517	- 44.264	616.309707		2314.741.616	
VI	747.043	47.043	- 5.901	776.443	76.443	- 34.008	451.090.123		1599.838.344	
10	746.393	46.393	+ 7.361	767.509	67.509	- 18.538		496.933.749	860.073.434	
								10477.975.498	5041.997.866	7512.604.891
								5435.977.632		5435.977.632
								$\frac{1}{2}$ 2717.988.616		
								-0.362		
								-0.449		
								-0.784		
								2716.993		

面積計算書

工
区

ブ
ロ
ック

計
算
者

精
算
者

(5)

備
考

福富 153-9 浪野634-2
153-11

点	①	②	③	④	⑤	⑥	③	×	⑤	②	×	⑥
	X	X-(定数)	X _{n-1} -X _{n+1}	Y	Y-(定数)	Y _{n-1} -Y _{n+1}	+	-	+	-		
8	-152, 757.114	-152,750.000 3.114	+ 3.176	-35, 820.707	-35,820.000 0.707	- 5.785			2.245832	18.014490		
8'	756.515	6.515	+ 6.564	821.752	1.752	+ 1.957			11.500129			12.749865
17	759.678	9.678	+ 18.759	822.664	2.664	+ 5.456			89.817976			52.783812
4	771.274	21.274	+ 6.218	827.206	7.206	+ 10.013			37.600908			213.016562
5	764.896	14.896	- 17.935	832.677	12.677	+ 0.331	227.361995					4.930576
6	753.339	3.339	- 11.782	827.537	7.537	- 11.970	38.800934			39.967830		
Σ							316.162929	90.660244	57.982320	283.480805		
							225.498485					225.498485
									1/2 = 112.7492425			
									(-236)			
									112.38			

分筆後一部資料なし

面積計算書

工区 /

ブロック 18

計算者

精算者 (天)

備考

野野 634-2 ○

点	①	②	③	④	⑤	⑥	③ × ⑤		② × ⑥	
	X	X - (定数)	X _{n-1} - X _{n+1}	Y	Y - (定数)	Y _{n-1} - Y _{n+1}	+	-	+	-
7	⁻¹¹⁰ 713.198	- 2.198	- 6.664	⁻³⁵ 822.125	- 2.125	- 1.957	20.578140			6.258486
8	713.114	- 2.114	+ 2.317	820.707	- 2.707	- 1.282		2.345119	4.306662	
8'	716.515	- 6.515	+ 6.664	821.712	- 1.712	+ 1.957		11.500128		12.749855
17	719.678	- 9.678	- 2.317	822.664	- 2.664	+ 1.383	8.836488			13.384674
							29.414628	13.845247	10.565148	26.134529
							15.569381		15.569831	
								$\frac{1}{2} = 7.784605$		
								<div style="border: 1px solid black; padding: 2px; display: inline-block;">合筆あり</div>		

面積計算書

Ⅰ
区

1

プロ
ック

18

計算者

精算者

備考

福岡

(153-8)

153-7

○

1541-1
1541-2

1541-1
1541-2

点	①	②	③	④	⑤	⑥	③ × ⑤		② × ⑥	
	X	X-(定数)	Xn-1-Xn+1	Y	Y-(定数)	Yn-1-Yn+1	+	-	+	-
19	-152, 766.267	-152,760, 6.267	+ 28.742	-35, 798.856	-35,790, 8.856	- 19.608		254.539,152	122.883,336	
15	790.482	20.482	+ 24.837	-25, 795.606	5.606	+ 2.214		139.236,222		67.487,148
16	791.104	31.104	+ 2.185	801.070	11.070	+ 5.925		24.187,950		180.291,200
2	792.667	32.667	+ 2.322	801.531	11.531	+ 7.130		26.770,982		232.915,710
Ⅲ	793.426	33.426	- 10.689	808.200	18.200	+ 16.491	194.539,800			551.228,166
3	781.978	21.978	- 31.686	818.022	28.022	+ 20.14	887.905,092			150.153,692
18	761.740	1.740	- 15.711	815.214	25.214	- 19.166	396.137,150		33.348,800	
							1079.582,046,000	738,306	156.232,176	1190.075,916
							1033.803,900			1033.803,900
							分筆後の座標なし			
							x _{1/2} 516.92187			
18	-152, 761.740	-152,750, 11.740	+ 22.900	-35, 815.214	-35,810, 5.214	- 4.602		116.272,200		
3	781.978	31.978	+ 9.530	818.022	8.022	+ 11.992		76.481,748		
4	771.274	21.274	- 22.900	827.206	17.206	+ 0.602	383.693,800			
17	759.678	9.678	- 9.530	822.664	12.664	- 11.992	120.738,576			
							504.032,376	192.753,908		
							311.678,428			
							x _{1/2} 155.899,214			

面積計算書

工
区

ブ
ロ
ック

18

計
算
者

精
算
者

備
考

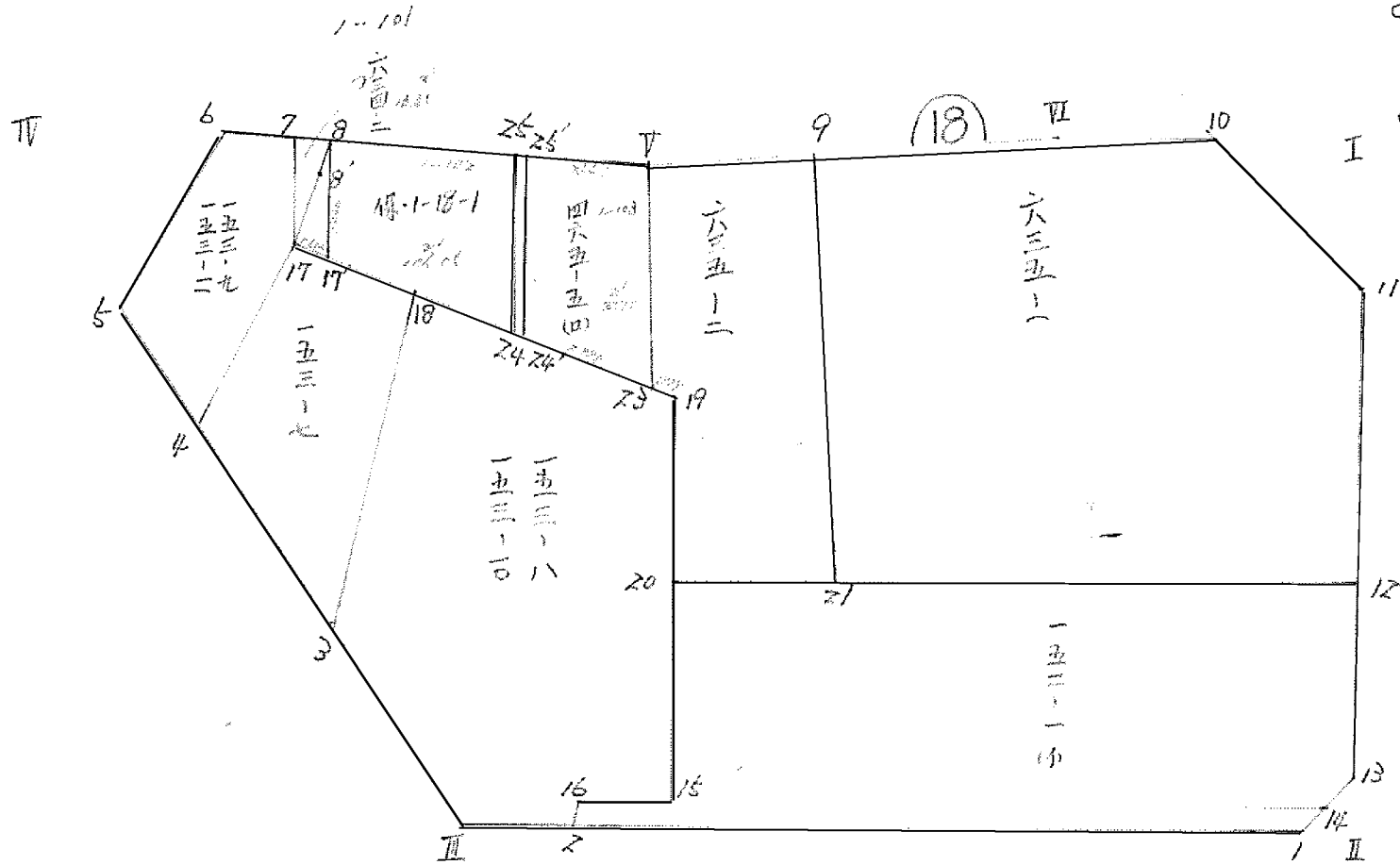
浜野 635-2

634(1) 465-50

12.11.11

12.11.11

点	④	②	③	④	⑤	⑥	③ × ⑤		② × ⑥	
	X	X-(定数)	X _{n-1} -X _{n+1}	Y	Y-(定数)	Y _{n-1} -Y _{n+1}	+	-	+	-
9	-152,750.240	0.244	+23.802	-35,791.729	-35,780 11.729	-14.343			278.173658	3.499692
21	776.096	26.096	+27.020	787.174	7.174	+5.651			192.841480	147.468496
20	777.264	27.264	-9.329	797.380	17.380	+11.682	-70.828220			318.498048
19	766.267	16.267	-11.498	798.856	18.856	+3.286	216.806288			53.453362
23	765.766	15.766	-12.973	800.666	20.666	+2.661	288.766018			41.953226
▽	752.294	2.294	-15.522	801.517	21.517	-8.937	333.986874		20.501478	
							1010.387200	273.015138	24.001170	561.373232
							537.372062			537.372062
							\sum	268.686031		
▽	152,750.240	-152,750	+12.652	-35,801.517	-35,800 1.517	-20.041			19.193080	46.970050
23	765.766	15.766	+7.324	800.666	0.666	+21.147			4.917744	733.403602
17	759.678	9.678	-9.251	822.664	22.664	+21.086	209.664664			209.070908
21	766.515	6.515	-6.564	821.752	21.752	-1.957	142.780128		12.749855	
8	753.114	3.114	-4.221	820.707	20.707	-20.235	87.404207		67.011790	
							439.849039	24.110828	121.725699	537.473910
							215.739211			215.739211
							\sum	207.869105		
							-0.44			
							207.42			



- 24'-25' は
24-25に平行移動
- 8-17'は24-25に
平行に移動
- Δ8, 17, 17'は
24-25-25'-26'-28
と同一面積,

面積計算書

工
区

ブ
ロ
ック

計
算
者

精
算
者

備
考

測の 465-5 (D)
59. 1-18-1

点	①	②	③	④	⑤	⑥	③ × ⑤		② × ⑥	
	X	X-(定数)	X _{n-1} -X _{n+1}	Y	Y-(定数)	Y _{n-1} -Y _{n+1}	+	-	+	-
V	⁻¹⁵ 752 294	-2.294	+12.150	⁻³⁵ 801.517	-1.517	-8.401				
22	765 766	-15.766	+11.339	800 666	-0.666	+6.854		19.948550		
24'	762 633	-12.633	-12.150	808 371	-8.371	+8.401	110.078650			
25'	752 616	-2.616	-11.339	809 067	-9.067	-6.854	102.810713			
							212.889363	27.500324		
							185.389039			m ²
						1/2	92.6945195			92.70
25'	752 616	-2.616	+10.519	809.067	-9.067	-12.336			95.275773	
24'	762 633	-12.633	+7.730	808.371	-8.371	+11.182			64.707830	
17'	760 346	-10.346	-10.519	820.250	-20.250	+12.336	213.009750			
8	752 114	-2.114	-7.730	820.707	-20.707	-11.182	160.065110			
							273.074860	160.083603		
							212.991257			m ²
							106.4956285			106.5
							-0.44 欠円			-
						∴	106.05			

面積計算書

工
区

ブ
ロ
ック

計
算
者

精
算
者

備
考

25の834-2
追加分.

点	①	②	③	④	⑤	⑥	③ × ⑤		② × ⑥	
	X	X - (定数)	X _{n-1} - X _{n+1}	Y	Y - (定数)	Y _{n-1} - Y _{n+1}	+	-	+	-
8 ⁻¹⁵²	753114	- 2.114	+ 3.831	820707 ⁻³⁵	- 0.707	- 1.502				
17	760346	- 10.346	+ 6.564	820250	- 0.250	+ 1.957		2.705517		
17	759678	- 9.678	- 2.821	822664	- 2.664	+ 1.502	10.205784			
8	756515	- 6.515	- 6.564	821752	- 1.752	- 1.957	11.60028			
							21.705912	4.349517		
							17.356395			
							1/2	8.6781975	≒	8.67 m ²
							合筆あり			

面積計算書

工
区

ブ
ロ
ック

計
算
者

精
算
者

備
考

茨野 635-1
福富 152 (4)

0

15009-1

15011-5

点	①	②	③	④	⑤	⑥	③	×	⑤	②	×	⑤
	X	X-(定数)	X _{n-1} -X _{n+1}	Y	Y-(定数)	Y _{n-1} -Y _{n+1}	+		-	+		-
11	752.004	-152,760 14.004	+ 26.144	757.905	-35,750 7.905	- 11.442			206.668320	164,810468		
12	772.537	22.537	+ 21.692	756.067	6.067	+ 29.269			131.605364			952.325463
21	776.096	26.096	- 22.293	787.174	27.174	+ 24.662	828.719982					1287.245452
9	750.244	10.244	- 29.053	791.729	41.729	- 10.731	1212.262637			109.928260		
10	747.043	7.043	- 2.851	776.443	26.443	- 24.220	101.831993			170.581460		
	746.393	6.393	+ 7.361	767.509	17.509	- 18.438			128.883749	118.513434		
							2142.904612		467.157033	563.933826		2239.681005
							1675.747179					1675.747179
							1/2		837.8735895	-(0.184)		837.68
12	772.537	-152,770 2.537	+ 7.073	756.067	-35,750 6.067	- 42.509			22.911891	107.845333		
13	784.337	14.337	+ 13.461	754.871	4.871	+ 0.143			65.568531			2.050191
14	785.998	15.998	+ 6.145	756.210	6.210	+ 40.735			38.160450			551.678530
15	790.482	20.482	- 8.734	795.606	45.606	+ 41.170	398.322804					227.229940
20	777.264	7.264	- 17.945	797.380	47.380	- 39.439	350.230100			287.211296		
							1248.556904		146.620872	395.056629		1496.972661
							1101.916032					1101.916032
							1/2		550.968016			

計年 月 算日	計 算 者	檢 查 者
---------------	-------------	-------------

/B.NO. 18

各筆面積計算書

地番	算式	隅切	地積	摘要
635-1			837 68	
635-2			268 68	
634	保留地		207 42	
634-2 153-9 153-11			112 38	
153-7			155 83	
153-8 153-10			516 92	
152(1)			550 95	
水路			67 09	
不切 I		38 26		
II		4 48		
IV		83 88		
	計	126 62	2716 95	
	全体		2716 99	
			-0 04	

面積計算書

正
区

フ
ロ
ック

計
算
者

精
算
者

備
考
197

地点	① X	② X-(定数)	③ X _{n-1} -X _{n+1}	④ Y	⑤ Y-(定数)	⑥ Y _{n-1} -Y _{n+1}	⑦ +	⑧ ×	⑨ -	⑩ +	⑪ ×	⑫ -
7	753.198	3.198	+ 6.590	223.135	2.135	+ 2.560	20659650					
8A	753.088	3.088	- 6.480	220.104	0.104	+ 0.471		0673920				
17	759.678	9.678	- 0.110	222.664	2.664	- 2.081		0293040				

19692690

$\times \frac{1}{2} = 9846345$



$9846345 \text{ m}^2 + 661 \text{ m}^2 =$

16457 m²

面積計算書

工
区

プロ
ック

計算
者

測量
者

備
考
197

地点	① X	② X-(定数)	③ X _{n-1} -X _{n-2}	④ Y	⑤ Y-(定数)	⑥ Y _{n-1} -Y _{n-2}	⑦ +	⑧ ×	⑨ -	⑩ +	⑪ ×	⑫ -
7	75.678	9.678	7.078	822.664	2.664	+ 0.734	18	901.080				
8A	75.088	3.088	0.508	820.104	0.104	+ 1.826		0.05250				
17A	76.188	10.188	8.658	820.828	0.828	- 2.560		5.7280				

3.2127
~~6.663070~~
 6.663070

合計 6.68 m² 左右