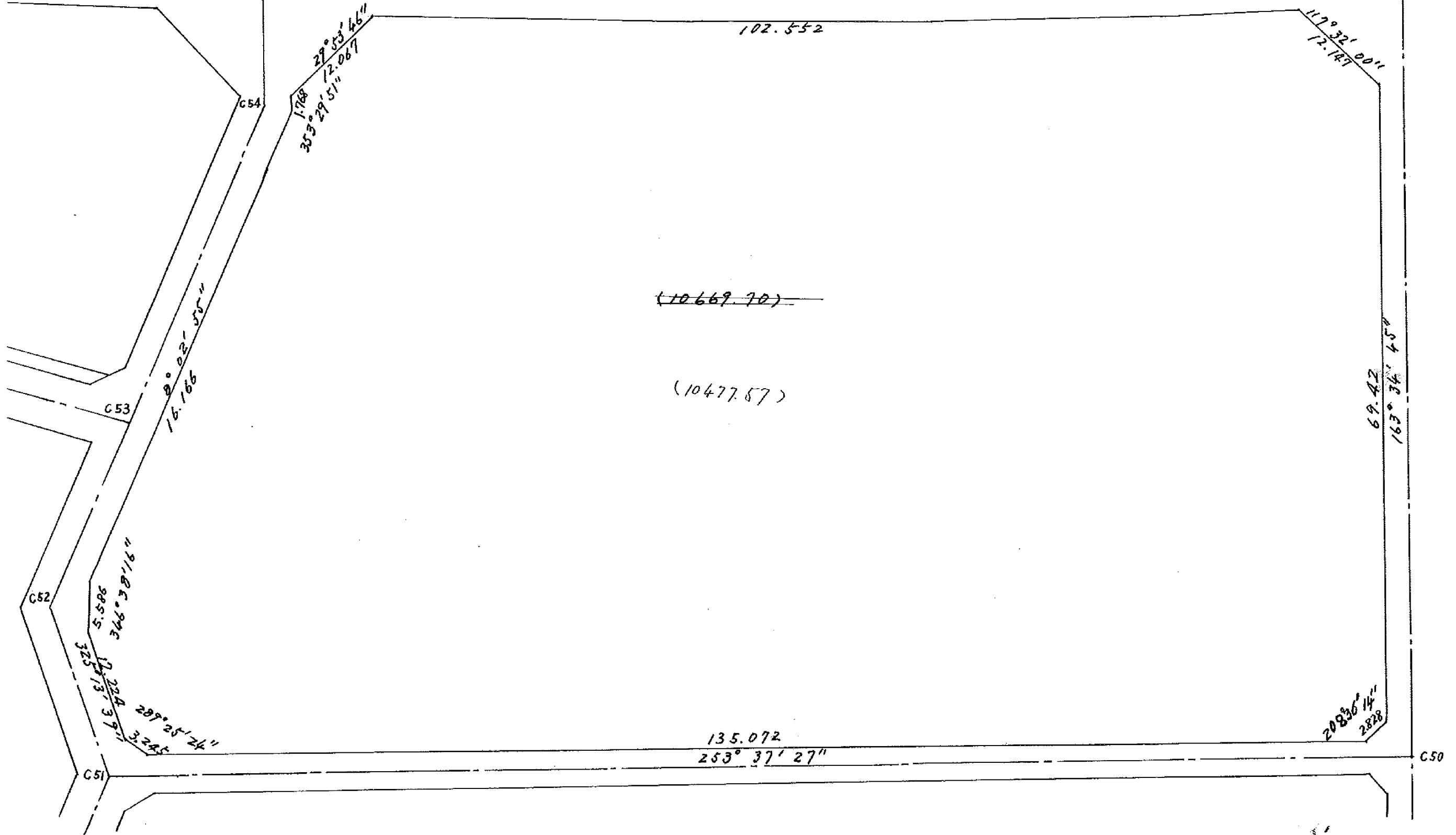
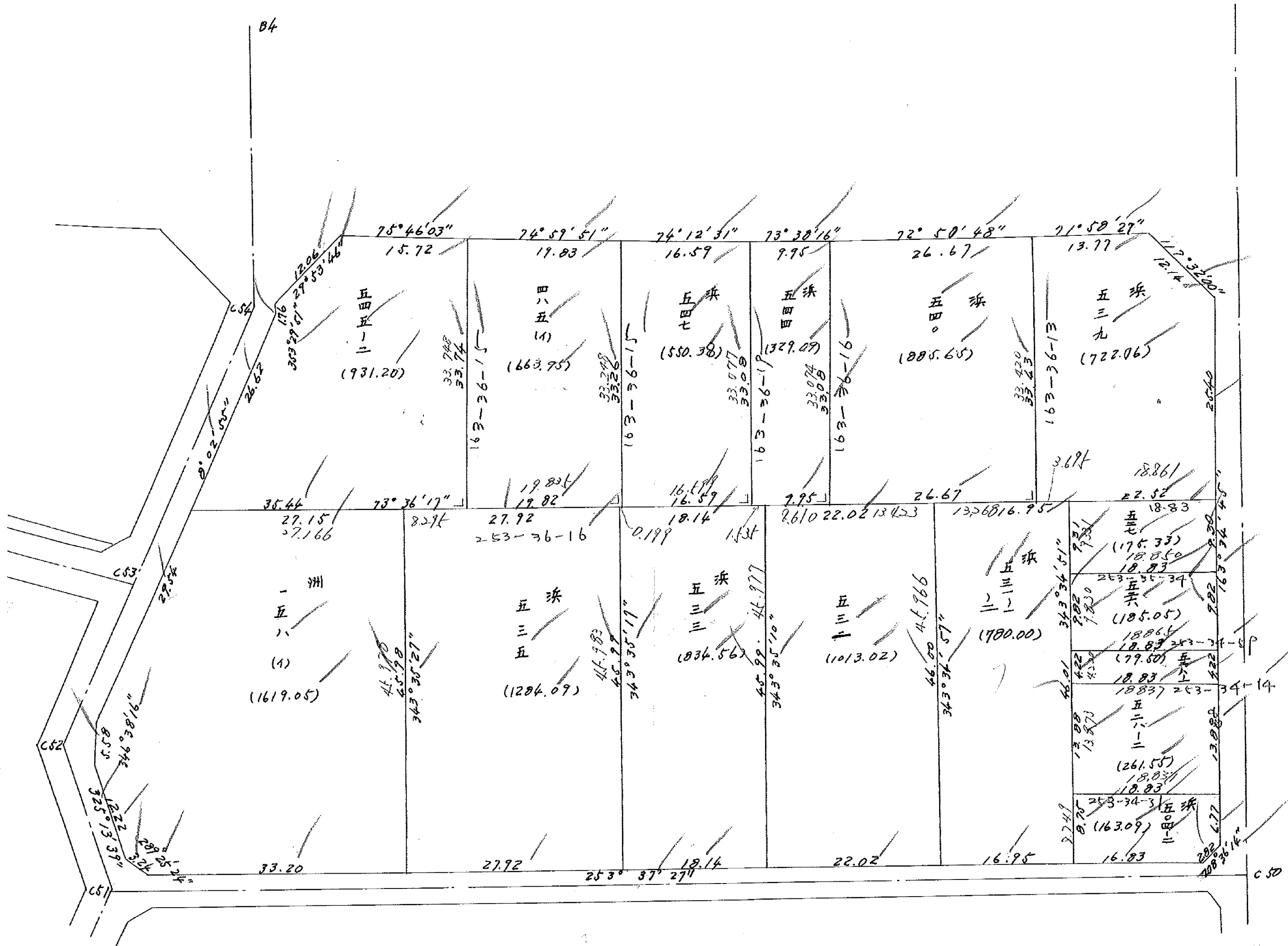


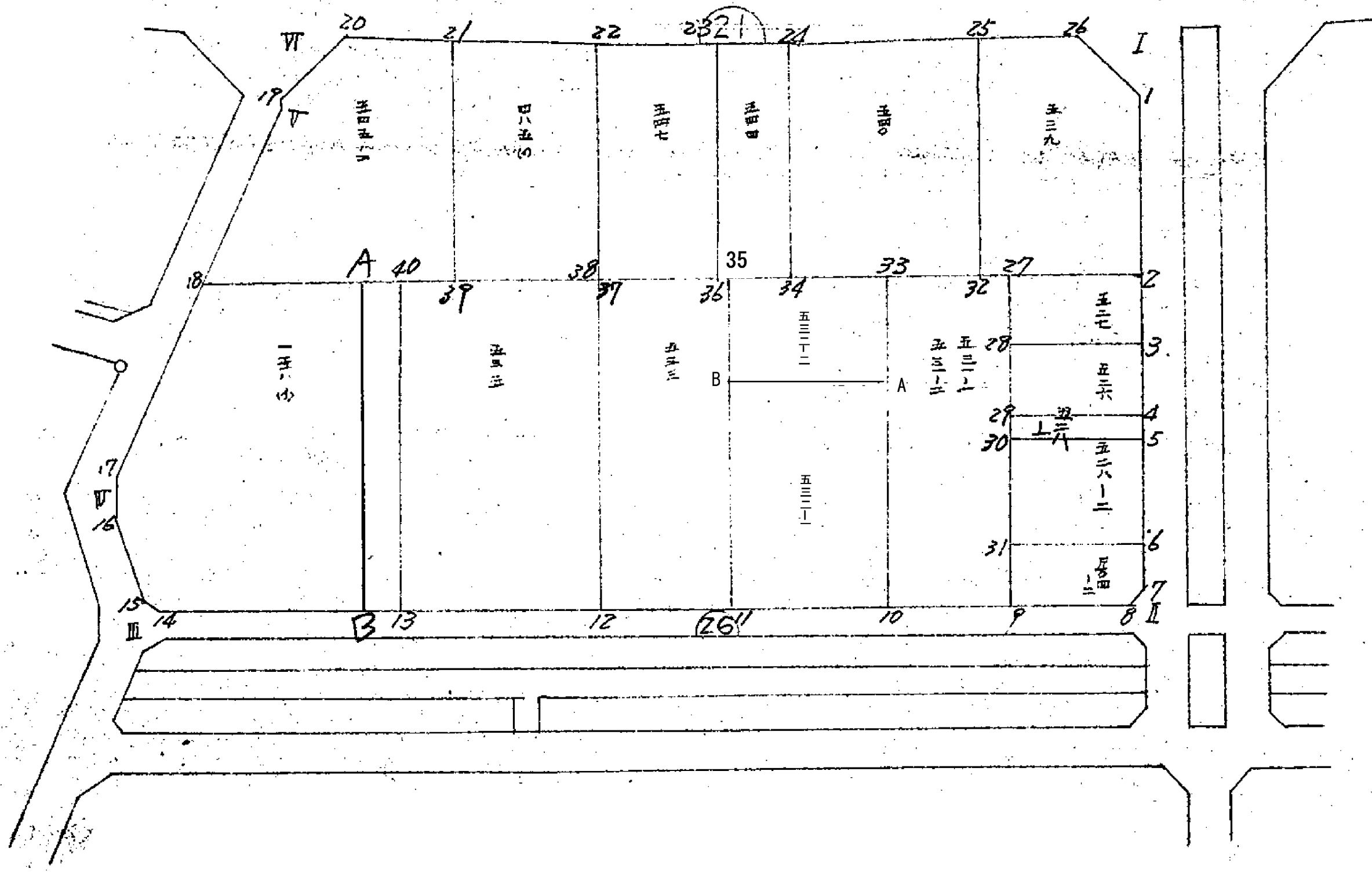
1-21

B4

B3







面積計算書

工
区

ブ
ロ
ック

Z1

計
算
者



精
算
者



備
考

点	①	②	③	④	⑤	⑥	③ × ⑤	② × ⑥		
	X	X-(定数) (-152600.000)	$X_{n-1} - X_{n+1}$ 114.300 43.599	Y	Y-(定数) (-35400.000)	$Y_{n-1} - Y_{n+1}$	+	-	+	-
I	-152690.408	- 90.408	25.063	-35442.159	- 42.159	-137.962		1038.090241	12472868496	
II	- 767.307	167.307	+116.110	419.496	19.496	+110.774	2263.680560	18533.265618		
III	- 806.518	206.518	+ 25.063	552.933	152.933	+143.260	3832.969779	29585.768680		
IV	- 792.376	192.376	- 72.731	562.756 ⁷⁵⁶	162.756	+ 1.539	11837.406636	296057430		
V	- 733.787	133.787	- 68.662	557.472	154.472	- 5.298	10606.356464	708.803526		
VI	- 723.708	123.708	- 43.379	557.458	157.458	-112.313	6830.370582	13894016604		
							29274.133682	7934.730580	27075.68862648415	091728
							21339.403102		21339.403102	
							$\frac{1}{2} =$ 10669.701551	- 108.872	= 10560.829551	

面積計算書

工
区

ブ
ロ
ック

21

計
算
者



概
算
者



備
考

点	①	②	③	④	⑤	⑥	③ × ⑤	② × ⑥
	X	X-(定数)	X _{n-1} -X _{n+1}	Y	Y-(定数)	Y _{n-1} -Y _{n+1}	+	-
浜野 539								
1	-152 698.801	(-152690.000) - 8.801	+ 29.979	-35 439.605	(-35430.000) - 9.605	-17.951	290.346615	157.986751
2	- 723.165	- 33.165	+ 30.722	- 432.505	- 2.505	+14.429	76.958610	478.537785
32	- 729.523	- 39.523	- 25.717	- 454.114	- 24.114	+ 31.047	620.137738	1227.070581
25	- 697.448	- 7.448	- 36.337	- 463.552	- 33.552	- 3.658	1219.179024	27.244784
26	- 693.186	- 3.186	+ 1.353	- 450.456	- 20.456	- 23.867	27.676768	76.040262
							1039.310762	394.982193
							1444.336589	261.271777
								1705.608366
								1444.336589
								1/2 = 722.1682825 - 0.1015 = 722.0667845
茨野 540								
25	- 152697.448	(-152690.000) 7.448	+ 24.207	- 35463.552	(-35450.000) 13.552	- 34.929	328.053264	260.151192
32	- 729.523	- 39.523	+ 39.605	- 454.114	- 4.114	+ 16.153	162.934970	638.415019
39	- 797.053	- 47.053	- 24.207	- 479.705	- 29.705	+ 34.929	719.068935	1442.514237
24	- 705.316	- 15.316	- 39.605	- 489.043	- 39.043	- 16.153	1546.298015	247.399348
							2265.366950	490.988234
								507.550540
								2201.929256
							1774.378716	1774.378716
								1/2 = 887.187358 - 1.5307 = 885.658658

面積計算書

工
区

ブ
ロ
ック

Z/

計
算
者



精
算
者



備
考

点	① X	② X-(定数)	③ $X_{n-1}-X_{n+1}$	④ Y	⑤ Y-(定数)	⑥ $Y_{n-1}-Y_{n+1}$	③ × ⑤	② × ⑥
茨野 544		(-152705.000)			(-35470.000)			
24	-152705.316	0.316	+ 28.934	-35489.043	19.043	- 18.848	550.990162	5.967660
34	- 737.053	32.053	+ 34.545	- 479.705	9.705	+ 0.208	335.259225	6.667024
36	- 739.861	34.861	- 28.934	- 489.251	19.251	+ 18.885	557.008434	658.347985
23	- 708.119	3.119	- 34.545	- 498.590	28.590	- 0.208	987.644550	
							1544.649784	886.249387
							658.400597	6.616412
							$\frac{1}{2} = 329.2002985$	$- 0.1087 = 329.0915985$
								658.400597
茨野 547		(-152700.000)			(-35480.000)			
23	-152708.119	8.119	+ 27.225	-35498.590	18.590	- 25.311	506.112750	205.500009
36	- 739.861	39.861	+ 36.427	- 489.251	9.251	+ 6.583	336.986177	262.404963
37	- 744.546	44.546	- 27.225	- 505.173	25.173	+ 25.311	685.334925	1127.503806
22	- 712.636	12.636	- 36.427	- 514.562	34.562	- 6.583	1258.989974	83.182788
							1944.326879	8430.98727
							288.682777	138990.8769
							1101.225972	1101.225972
							$\frac{1}{2} = 550.612986$	$- 0.2260 = 550.386986$

面積計算書

工
区

ブ
ロ
ック

Z1

計
算
者



精
算
者



備
考

点	① X	② X-(定数)	③ $X_{n-1}-X_{n+1}$	④ Y	⑤ Y-(定数)	⑥ $Y_{n-1}-Y_{n+1}$	③ × ⑤ +	⑤ -	② × ⑥ +	⑥ × ④ -
浜野 485 (A)		(-152700.000)			(-35500.000)					
22	-152712.636	-12.636	+26.776	-35514.562	-14.562	-28.546	389.912112		360.707286	
57	-744.546	-44.546	+37.506	-505.173	-5.173	+9.632	194.018530			429.067072
39	-750.142	-50.142	-26.776	-524.194	-24.194	+28.546	647.818544			1431.353522
21	-717.770	-17.770	-37.506	-533.719	-33.719	-9.632	1264.6484			171.160640
							1912.483358	883.930650	531.867896	1860.420604
							1328.552708			1328.552708
							$\sum Y_2 = 664.276354$	$-0.4251 =$	663.951254	
浜野 545-2		(-152700.000)			(-35500.000)					
21	-152717.770	-17.770	+28.507	-35533.719	-33.719	-24.763	961.227533		440.038510	
39	-750.142	-50.142	+42.378	-524.194	-24.194	+24.481	1025.293332			1227.526302
18	-760.148	-60.148	-16.355	-558.200	-58.200	+30.278	951.861000			1821.161144
V	-733.787	-33.787	-28.051	-554.472	-54.472	-3.228	1527.994072		107.064436	
19	-732.097	-32.097	-12.152	-554.972	-54.972	-5.515	668.019744		177.014955	
20	-721.635	-21.635	-14.327	-548.957	-48.957	-21.253	701.406939		459.772266	
							3849.281755	1986.520865	11859.26556	3048.687466
							1862.760890			1862.76089
							$\sum Y_2 = 931.380445$	$-0.1755 =$	931.204945	

分筆後の座標なし

面積計算書

工
区

ブ
ロ
ック

z /

計
算
者



精
算
者



備
考

点	①	②	③	④	⑤	③ × ⑤		② × ④		
	X	X-(定数)	$X_{n-1}-X_{n+1}$	Y	Y-(定数)	+	-	+	-	
洲崎	158 4)									
		(-152750.000)			(-35500.000)					
40	-152952.483	- 2.483	+ 36.445	-35532.149	- 32.149	- 39.041		1171.670305	76.738803	
13	- 796.593	46.593	+ 53.471	- 519.159	- 19.159	+ 18.865		1024.450889	878.976945	
14	- 805.954	55.954	+ 8.282	- 551.014	- 51.014	+ 34.915		422.497948	1953.633910	
15	- 804.875	54.875	- 11.120	- 534.074	- 54.074	+ 10.031	601.302880		580.457125	
16	- 794.834	44.834	- 15.476	- 561.045	- 61.045	+ 8.262	944.732420		370.418508	
17	- 789.399	39.399	- 34.686	- 562.336	- 62.336	- 2.845	2162.186496		112094.55	
18	- 760.140	10.140	- 36.916	- 558.200	- 58.200	- 30.187	2148.511200		306.337676	
							5056732996	2618.619142	515.366634	3753.480480
							3238.113854			3238.113854
							$\frac{1}{2} = 1619.056927$			

面積計算書

工
区

ブ
ロ
ック

Z/

計
算
者



精
算
者



備
考

点	①	②	③	④	⑤	⑥	③ × ⑤	② × ⑥
	X	X-(定数)	$X_{n-1} - X_{n+1}$	Y	Y-(定数)	$Y_{n-1} - Y_{n+1}$	+	-
赤野 535		(=152744.602)			(=75490.000)			
38	-152744.602	- 4.602	+ 36.238	-35505.363	- 15.363	- 39.781	556.724374	183.072162
12	- 788.721	- 48.721	+ 51.991	- 492.368	- 2.368	+ 13.796	123.114688	627.154916
13	- 796.593	- 56.593	- 36.238	- 519.159	- 29.159	+ 39.781	1056.663842	2251.326133
40	- 752.483	- 12.483	- 51.991	- 532.149	- 42.149	- 13.796	2191.368659	172.215468
							3248.032501	679.839082
							2568.193419	355.287630
								2923481049
								2568.193419
							$\frac{1}{2} = 1284.0967075$	

面積計算書

工
区

ブ
ロ
ック

Z/
/

計
算
者



精
算
者



備
考

点	① X	② X-(定数)	③ $X_{n-1}-X_{n+1}$	④ Y	⑤ Y-(定数)	⑥ $Y_{n-1}-Y_{n+1}$	③ × ⑤	② × ⑥
							+	-
504-2		(-152780.000)			(-25420.000)			
6	-152758.890	8.890	+ 1.173	-35421.976	1.976	- 19.979	2.317848	177.613310
7	- 765.388	15.388	+ 8.981	- 420.061	0.061	- 0.561	0.547841	8.632668
8	- 767.871	17.871	+ 7.228	- 421.415	1.415	+ 17.503	10.227620	312.796113
9	- 772.616	22.616	- 3.656	- 427.564	17.564	+ 18.625	64.213984	421.223000
31	- 764.215	14.215	- 13.726	- 440.040	20.040	- 15.588	275.069040	221.583420
							339.283024	13.093309
							326.189715	407.829398
								734.019113
								326.189715
							$\frac{1}{2} = 163.0948575$	
531-1								
531-2		(-152720.000)			(-25430.000)			
27	-152728.980	8.480	+ 29.251	-25450.570	20.570	- 29.269	809.450090	248.201120
9	- 772.616	52.616	+ 48.916	- 427.564	7.564	+ 3.260	370.000624	171.528160
10	- 777.396	57.396	- 39.251	- 453.830	23.830	+ 29.269	937.734330	1679.923524
33	- 733.265	13.265	- 48.916	- 466.833	36.833	- 3.260	1801.723028	43.243900
							2739.457358	1179.450694
								291.445020
								1851.451684
							1560.006664	1560.006664
							$\frac{1}{2} = 780.003332$	

面積計算書

工
区

ブ
ロ
ック

Z/

計
算
者



精
算
者



備
考

点	①	②	③	④	⑤	⑥	③ × ⑤	② × ⑥
	X	X-(定数)	$X_{n-1}-X_{n+1}$	Y	Y-(定数)	$Y_{n-1}-Y_{n+1}$	+ -	+ -
	528-1	(-152740.000)			(-35420.000)			
4	-152741.519	- 1.519	- 1.274	-35427.096	- 7.096	- 19.256	9.040304	29.249864
5	- 745.567	5.567	+ 9.374	- 425.903	- 5.903	+ 16.869	55.334722	93.909923
30	- 750.893	10.893	+ 1.274	443.965	23.965	+ 19.256	30.531410	209.755608
29	- 746.841	6.841	- 9.374	445.159	25.159	- 16.869	235.840466	115.400829
							244.880770	85.866132
							159.014638	144.650693
								303.665331
								159.014638
							$\frac{1}{2} = 79.507319$	
	528-2	(-152740.000)			(-35420.000)			
5	-152745.567	5.567	+ 7.997	-35425.903	- 5.903	- 21.989	47.206291	122.412763
6	- 758.890	18.890	+ 18.648	- 421.976	- 1.976	+ 14.137	36.848448	267.047930
31	- 764.215	24.215	- 7.997	440.040	20.040	+ 21.989	16.259880	532.463635
30	- 750.893	10.893	- 18.648	443.965	23.965	- 14.137	446.899320	153.994341
							607.159200	84.054739
							276.407104	799.511565
							523.104461	523.104461
							$\frac{1}{2} = 261.5522305$	

面積計算書

工
区

ブ
ロ
ック

Z/

計
算
者



精
算
者



備
考

点	①	②	③	④	⑤	⑥	③ × ⑤	② × ⑥		
	X	X-(定数)	$X_{n-1} - X_{n+1}$	Y	Y-(定数)	$Y_{n-1} - Y_{n+1}$	+	-		
527		(-152720.000)			(-35420.000)					
Z	-152723.165	- 3.165	+ 3.614	-35422.505	- 12.505	- 20.697		45.193070	65.506005	
3	- 732.094	- 12.094	+ 14.248	- 429.873	- 9.873	+ 15.432		140.670504	186.634608	
28	- 727.413	- 17.413	- 3.614	- 447.937	- 27.937	+ 20.697	100.964318		360.396261	
27	- 728.480	- 8.480	- 14.248	- 450.570	- 30.570	- 15.432	435.561360		130.863360	
							536.525678	185.863574	196.369365	547.031467
							350.662104			350.662104
							$\frac{1}{2} = 175.331052$			
526		(-152720.000)			(-35420.000)					
3	-152722.094	- 2.094	+ 4.106	-35427.873	- 9.873	- 20.841		40.538538	43.641054	
4	- 741.519	- 11.519	+ 14.747	- 427.096	- 7.096	+ 15.286		104.644712	176.079134	
29	- 746.841	- 16.841	- 4.106	- 445.159	- 25.159	+ 20.841	103.302854		350.983281	
28	- 727.413	- 7.413	- 14.747	- 447.937	- 27.937	- 15.286	411.906939		113.315118	
							515.289793	145.183250	156.956172	527.062715
							370.106543			370.106543
							$\frac{1}{2} = 185.0532715$			

面積計算書

工
区

ブ
ロ
ック

ZI

計
算
者



測
算
者



備
考

点	① X	② X-(定数)	③ $X_{n-1}-X_{n+1}$	④ Y	⑤ Y-(定数)	⑥ $Y_{n-1}-Y_{n+1}$	③ × ⑤ +	⑤ -	② × ⑥ +	⑥ -
角切										
I	-152690.408	(-152890.000) 0.408	+ 5.615	-35442.159	(-35430.000) 12.159	- 10.771	18.272785		4.394568	
1	- 698.801	8.801	+ 2.778	- 437.685	9.685	+ 8.297	26.904930			73.021897
26	- 693.186	3.186	- 8.393	- 450.456	20.456	+ 2.474	171.687208			7.882164
							171.687208	95.177715	4.394568	80.904061
							76.509493			76.509493
							$\times \frac{1}{2} = 38.2547465$			
角切										
II	-152767.307	(-152765.000) 2.307	+ 2.483	-35419.496	(-35400.000) 19.496	+ 1.354	48.408568			3.123678
8	- 767.871	2.871	- 1.919	- 421.415	21.415	+ 0.565	41.095385			1.622115
7	- 765.388	0.388	- 0.564	- 420.061	20.061	- 1.919	11.314404			0.744572
							52.409789	48.408568	0.744572	4.745773
							4.001221			4.001221
							$\times \frac{1}{2} = 2.0006105$			

面積計算書

Ⅰ
区

ブ
ロ
ック

Z1

計
算
者



精
算
者



備
考

点	① X	② X-(定数)	③ $X_{n-1}-X_{n+1}$	④ Y	⑤ Y-(定数)	⑥ $Y_{n-1}-Y_{n+1}$	③ ×	⑤	② ×	④
							+	-	+	-
隅切		(52800.000)			(-38550.000)					
Ⅲ	-152806.518	- 6.518	- 1.079	-35552.933	- 2.933	+ 3.060	3.164707			19.945080
15	- 804.875	- 4.875	- 0.564	- 554.074	- 4.074	- 1.919	2.297736		9.355125	
14	- 805.954	- 5.954	+ 1.643	- 551.014	- 1.014	- 1.141		1.666002	6.793514	5.773514
							5.462443	1.666002	16.148639	19.945080
							3.796441			3.796441
							$\frac{1}{2} =$	1.8982205		
隅切		(-152780.000)			(-35860.000)					
Ⅳ	-152792.370	- 12.370	- 5.435	-35562.756	- 2.756	+ 1.291	14.978860			15.969670
17	- 789.399	- 9.399	+ 2.464	- 562.336	- 2.336	- 1.711		5.755904		6.230280 15.768670
16	- 794.834	- 14.834	+ 2.971	- 561.045	- 1.045	+ 0.420		3.104695	16.081689	6.230280
							14.978860	8.860599	16.081689	22.199950
							6.118261			6.118261
							$\frac{1}{2} =$	3.0591305		

面積計算書

工
区

ブ
ロ
ック

Z/
Z/

計
算
者



精
算
者



備
考

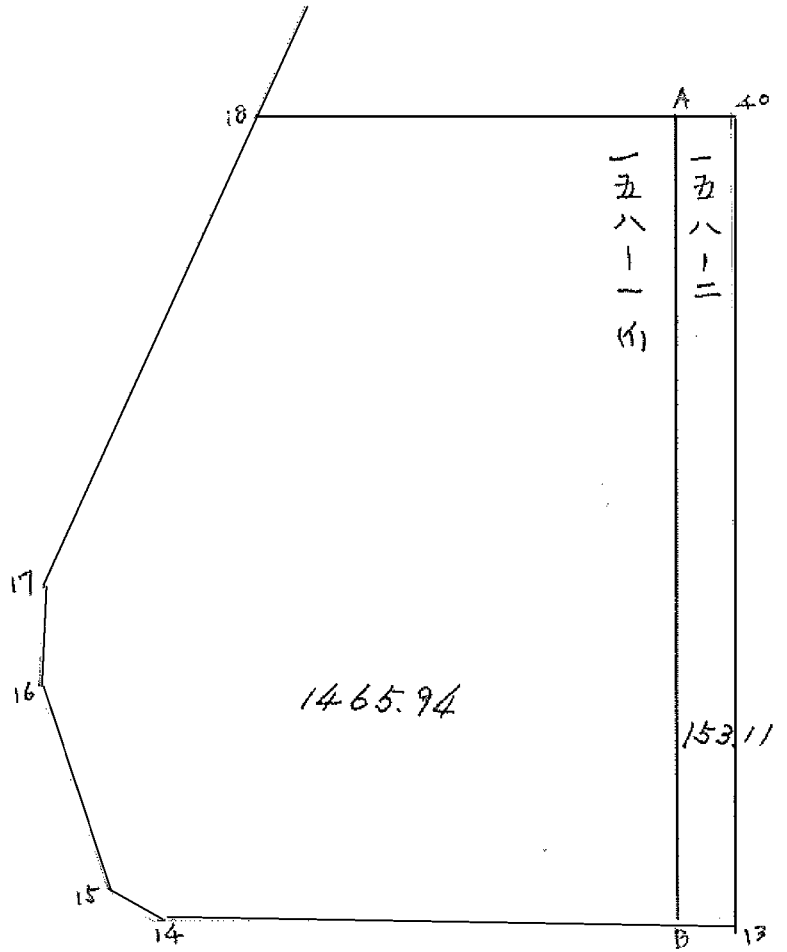
点	①	②	③	④	⑤	⑥	③ × ⑤	② × ⑥
	X	X-(定数)	$X_{n-1} - X_{n+1}$	Y	Y-(定数)	$Y_{n-1} - Y_{n+1}$	+	-
角切								
VI	-152723.708	^(-152720.000) - 3.708	- 10.461	-35557.458	^(-35540.000) - 17.458	- 6.015	182.628138	22.303620
20	- 721.636	- 1.636	+ 0.389	- 548.957	- 0.957	- 2.486	75.140273	4.067076
19	- 732.097	- 12.097	+ 2.072	- 554.972	- 14.972	^{+ 8.501} + 2.486	31.021984	102.836597
							182.628138	106.162257
							76.465881	76.465881
							$\frac{1}{2} = 38.2329405$	

計年
月
算日

計
算
者
 檢
查
者


B. No. 2 / 各筆面積計算書

地番	算式	隅切	地積	摘要
527			175.33 ✓	
526			185.05 ✓	
528-1			79.50 ✓	
528-2			261.55 ✓	
504-2			163.09 ✓	
531-1			780.00 ✓	
531-2				
532			1013.02 ✓	
533			834.56 ✓	
535			1284.09 ✓	
158(4)			1619.05 ✓	
545-2			931.20 ✓	
485(4)			663.95 ✓	
547			550.38 ✓	
544			329.07 ✓	
540			885.65 ✓	
539			722.06 ✓	
III, 15, 14		1.89		
IV, 17, 16		3.05		
VI, 20, 19		38.23		
I, 1, 26		38.25		
II, 8, 7		2.00		
合計		83.42	10477.57	
			10560.99	
			10560.82	



面積計算書

工区

1

ブロック

21

計算者

精算者

備考

158-1(1)

点	①	②	③	④	⑤	⑥	③ × ⑤		② × ⑥	
	X	X - (定数)	X _{n-1} - X _{n-1}	Y	Y - (定数)	Y _{n-1} - Y _{n-1}	+	-	+	-
18	760.148 760.148	(-152.750) (-152.750)	+ 35.976	558.200	(-35.520) (-35.520)	+ 26.993	1394.283200			273.924964
A	753.423	3.423	- 37.384	575.343	15.343	+ 35.846		573.582912		122.900858
B	797.532	40.532	- 52.531	522.532	2.754	- 15.671		123.659994		744.873972
14	805.954	55.954	- 7.343	551.014	31.014	- 31.720		227.735802		1774.860880
15	804.875	54.875	+ 11.120	554.074	34.074	- 10.031	378.902880			550.451125
16	794.834	44.834	+ 15.476	561.045	41.045	- 8.262	635.212420			370.418508
17	789.399	39.399	+ 34.686	562.336	42.336	+ 2.845	1468.466496			112.090155
18							3056.864996	924.976488	508.715977	3440.604485
							2931.888508			2931.888508
							× 1/2 = 1465.944254			

面積計算書

区

ブロック

21

計算者

精算者

備考

158-2

点	①	②	③	④	⑤	⑥	③ × ⑤		② × ⑥	
	X	X - (定数)	X _{n-1} - X _n	Y	Y - (定数)	Y _{n-1} - Y _n	+	-	+	-
A	⁻¹⁵² 753.423	^(-152.750) 3.423	-45.049	⁻³⁵ 575.743	^(-35.510) 25.343	+ 9.795	1141.676809			33.528285
40	752.483	2.483	+43.170	572.149	22.149	-16.184		956.172330	40.184872	
13	796.593	46.593	+45.049	519.159	9.159	-9.795		412.603791	456.378435	
B	791.532	47.532	-43.170	522. 544	12.354	+16.184	533.322180			769.257888
							1674.998987	1368.776121	496.563307	802.786173
							306.222866			306.222866
							√2 = 153.111433			