

BLOCK NO. 10

街区計算

街区略図

工区

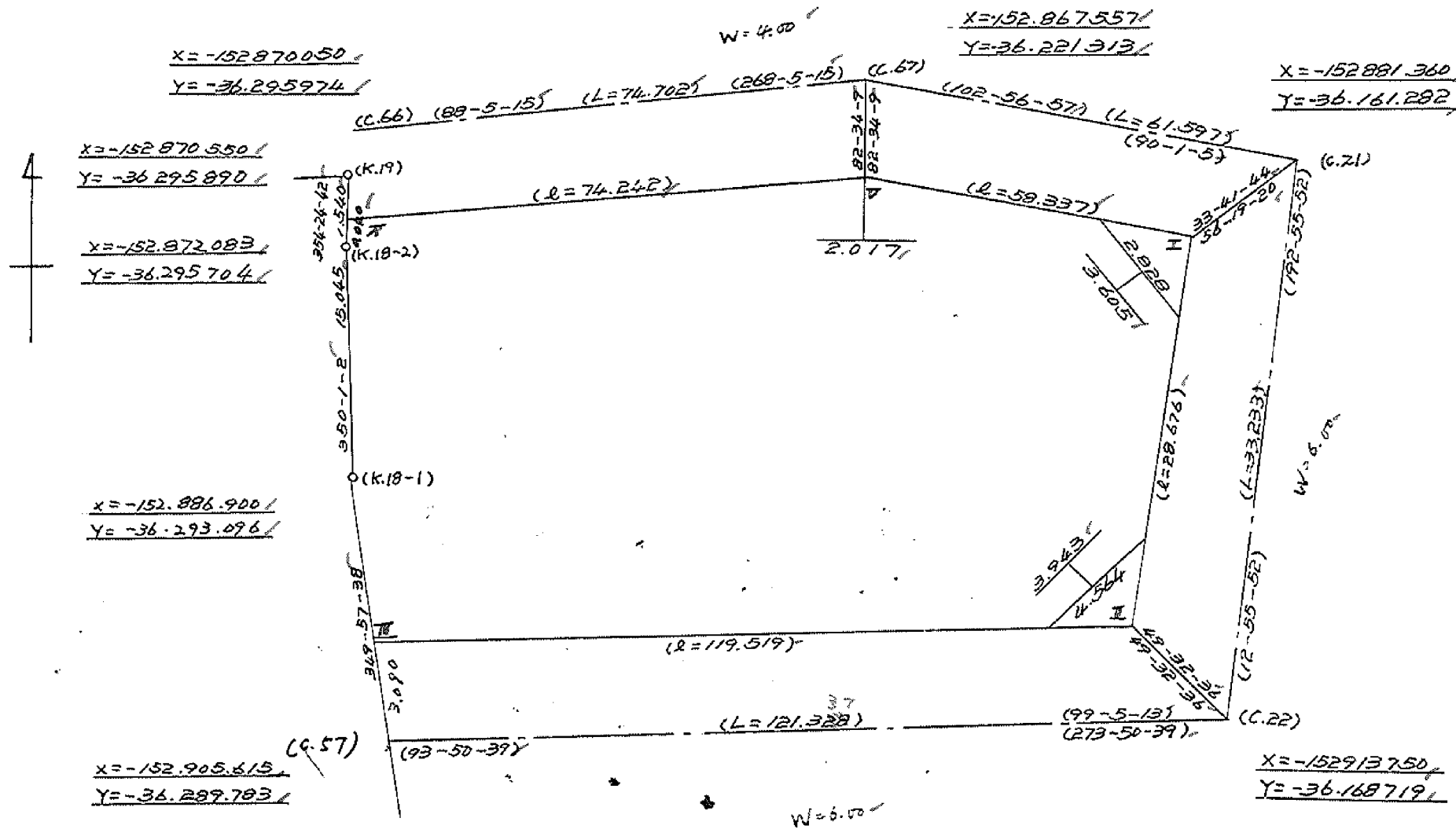
2

ブロック

10

記入者

点検者



面積計算書

工区

2

ブロック

10

計算者

樋口

精算者

三和

備考

居休

点	①	②	③	④	⑤	⑥	③	x	⑤	②	x	⑥
	X	X-(定数)	X _{n-1} -X _{n+1}	Y	Y-(定数)	Y _{n-1} -Y _{n+1}	+	-	-	+	-	
I	-152. 882.637	-152.850 32.637	+41.020	164.653	14.653	-50.436			601.066060	1646.079732		
II	910.585	60.585	+19.935	171.071	21.071	+125.668			420.050385			7613.595780
III	902.572	32.572	-23.685	290.321	140.321	+122.025	3323.502885					6415.098300
K18-1	886.900	36.900	-30.489	293.096	143.096	+3.383	4312.853944					198.632700
K18-2	872.083	22.083	-14.857	295.704	145.704	+2.612	2164.724328					57.680795
N	872.043	22.043	-2.318	295.708	145.708	-74.197	366.892744			1635.524471		
V	869.565	19.565	+10.394	221.507	71.507	7131.055			757.545158	2564.091015		
									10217.973901	1778.661603	5845.695278	14285.007570
									8439.312298			8439.312298
									Y ₂ = 4219.65649			
												4219.65 - (1.99 + 4.44) = 4213.22

面地計算

画地略図

工区

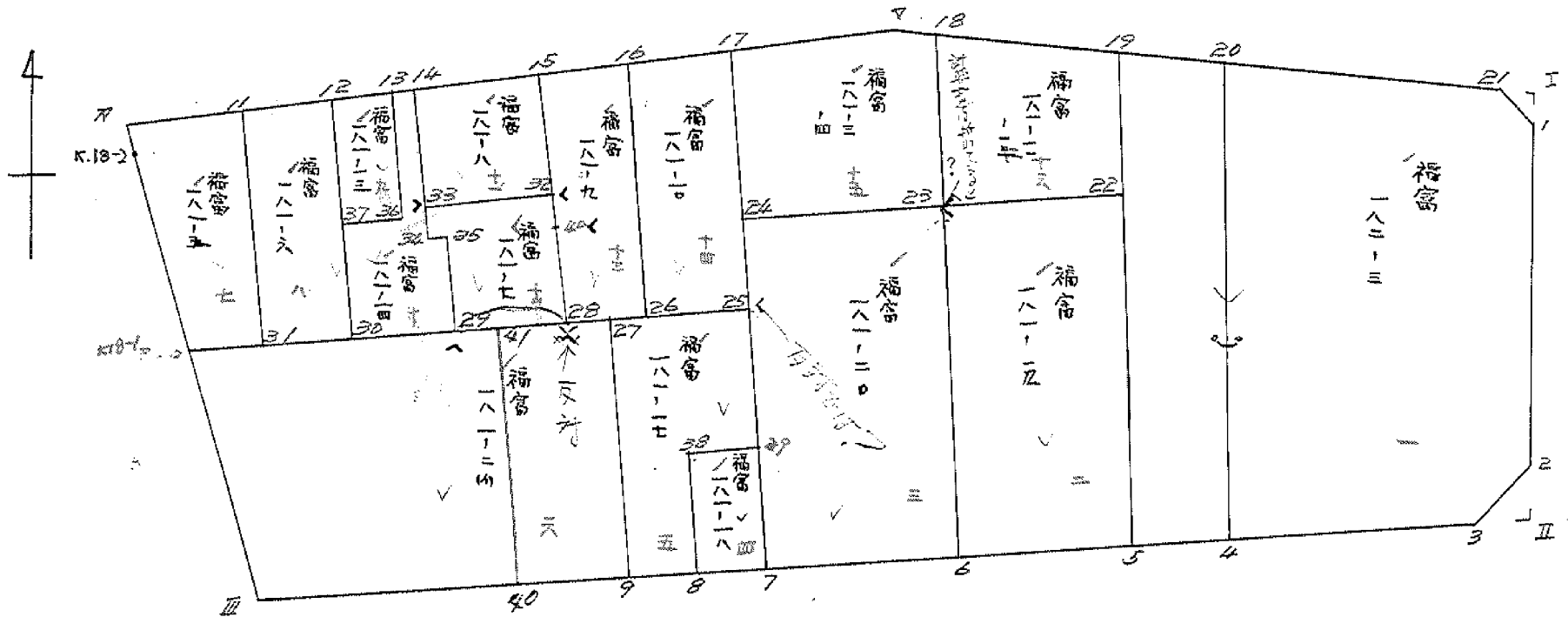
2

ブロック

10

記入者

点検者



面積計算書

工区

2

ブロック

10

計算者



精算者



備考

1. 福富 182-3
2. 福富 181-19

点	①	②	③	④	⑤	⑥	⑧	×	⑤	②	×	⑥
	X	X-(定数)	X _{n-1} -X _{n+1}	Y	Y-(定数)	Y _{n-1} -Y _{n+1}	+		-	+		-
	-152	-152.870		-36	-36.160							
1	884.586	14.586	+25.473	165.101	5.101	+3.798			129.937773			55.397628
2	907.662	37.662	+25.798	170.400	10.400	+8.963			268.299200			337.564506
3	910.384	40.384	+0.406	174.064	14.064	+38.130			5.709984			1539.841920
4	908.068	38.068	-37.327	209.530	48.530	+32.253	1811.479310					1227.807264
19	873.057	3.057	-25.879	206.317	48.317	-41.928	1198.637643			128.178896		
21	882.189	12.189	+11.529	166.602	6.602	-41.216			75.114458	502.381824		
									3010.116953	480.061415	630.555720	3160.611258
									2530.055538			2530.055538
									1/2 = 1265.027769			
22	-152	-152.880		-36	-36.200							
	884.093	4.093	+24.876	207.014	7.014	-12.369			174.480264	50.626317		
5	908.068	28.068	+23.043	208.530	8.530	+15.392			196.556790			432.022656
6	907.136	27.136	-24.876	222.406	22.406	+12.369	557.371656					335.645184
23	883.192	3.192	-23.043	220.899	20.899	-15.392	481.575657			49.131264		
									1038.947313	371.037054	99.757581	767.667840
									667.910259			667.910259
									1/2 = 333.9551295			

面積計算書

工
区

2

ブ
ロ
ック

10

計算者



精算者



備考

3. 福富181-20
4. 福富181-18

点	①	②	③	④	⑤	⑥	③	×	⑤	②	×	⑥
	X	X-(定数)	X _{n-1} -X _{n+1}	Y	Y-(定数)	Y _{n-1} -Y _{n+1}	+	-	+	-		
23	⁻¹⁵² 893.192	^{-152.890} 9.192	+25.022	⁻³⁶ 220.899	^{-36.220} 0.899	-15.121			22.494778	48.266232		
4	907.136	27.136	+22.828	222.406	2.406	+18.111			54.924168			491.460096
7	906.020	26.020	-25.022	239.010	19.010	+15.121	475.668220					393.448420
24	882.114	2.114	-22.828	237.527	17.527	-18.111	400.106356			32.286654		
									875.774576	77.418946	86.552886	884.908516
									798.355630			798.355630
									1/2 = 399.177815			
39	⁻¹⁵² 899.034	^{-152.890} 9.034	+7.388	⁻³⁶ 238.570	^{-36.230} 8.570	-3.546			53.315160	50.102564		
7	906.020	16.020	+6.584	239.010	9.010	+6.426			59.321840			102.944520
8	905.618	15.618	-7.388	244.996	14.996	+5.546	110.790448					86.617428
38	898.632	8.632	-6.584	244.556	14.556	-6.426	95.836704			55.469232		
									206.271520	122.637000	105.571796	189.561948
									83.990152			83.990152
									1/2 = 41.995076			

面積計算書

工区

2

ブロック

10

計算者

種口

精算者

手野

備考 5 福富 181-17

6 福富 181-24

点	①	②	③	④	⑤	⑥	③	⑤	②	⑥
	X	X-(定数)	X _{n-1} -X _{n-1}	Y	Y-(定数)	Y _{n-1} -Y _{n-1}	+	-	+	-
	-152	-152.880		-36	-36.230					
25	885.626	5.626	+13.071	237.725	7.725	-12.545		100.973475	70.578170	
29	899.034	19.034	+13.006	238.570	8.570	+6.831		111.461420		130.021254
38	898.632	18.632	+6.584	244.556	14.556	+6.426		95.836704		19.729232
8	905.618	25.618	+6.493	244.996	14.996	+7.772		97.369028		199.103096
9	905.125	25.125	-19.655	252.328	22.328	+6.119	438.858840			153.739875
27	885.963	5.963	-19.499	251.115	21.115	-14.603	411.721385		87.077689	
							850.578225	405.640627	157.655859	602.592457
							444.937598			444.937598
							Y ₂ = 222.468799			
	-152	-152.880		-36	-36.250					
27	885.963	5.963	+19.062	251.115	1.115	-2.765		21.254130	16.487695	
9	905.125	25.125	+16.609	252.328	2.328	+39.206		38.665752		985.050750
II	902.572	22.572	-18.225	290.321	40.321	+40.768	734.850225			920.215296
K18-1	886.900	6.900	-16.330	293.096	13.096	-26.746	703.757680		184.547400	
29	886.242	6.242	-0.837	263.575	13.575	-38.003	11.362275		237.214726	
28	886.063	6.063	-0.279	255.093	5.093	-12.460	1.420941		75.544980	
							1451.391127	59.99882	573.794801	1905.266046
							1391.471245			1391.471245

Y₂ = 695.7356225

面積計算書

工区 Z

ブロック 10

計算者



精算者



備考

7. 橋富 181-5
8. 橋富 181-6

点	①	②	③	④	⑤	⑥	③	⑤	②	⑤
	X	X-(定数)	X _{n-1} -X _{n+1}	Y	Y-(定数)	Y _{n-1} -Y _{n+1}	+	-	+	-
11	871.580	1.580	+14.592	281.838	1.838	-14.505		26.820096	22.917900	
31	886.635	16.635	+15.320	281.203	1.203	+11.258		18.429960		187.276830
K18-1	886.900	16.900	-14.552	293.096	13.096	+14.501	190.572992			245.066900
K18-2	872.083	2.083	-14.857	295.704	15.704	+2.612	233.310328			5.440796
T1	872.043	2.043	-0.503	295.708	15.708	-13.866	7.901124		28.328238	
							431.788444	45.250056	51.246138	437.784526
							386.538388			386.538388
							Σ = 193.257194			
12	871.280	1.280	+14.854	272.255	2.255	-9.670		42.408170	12.377600	
30	886.434	16.434	+15.355	272.168	2.168	+8.348		33.289640		137.191032
31	886.635	16.635	-14.854	281.203	11.203	+9.670	166.409362			160.860450
11	871.580	1.580	-15.355	281.838	11.838	-8.348	181.772490		13.189840	
							348.181852	75.697810	25.567440	298.051482
							272.484042			272.484042
							Σ = 136.242021			

面積計算書

T
K

Z

フ
ロ
ック

10

計
算
者



精
算
者



備
考

9 福富 181-13

10 福富 181-14

点	①	②	③	④	⑤	⑥	⑦	⑧	⑨	⑩	
	X	X-(定数)	X _{n-1} -X _{n+1}	Y	Y-(定数)	Y _{n-1} -Y _{n+1}	+	-	+	-	
13	871.046 ⁻¹⁵²	1.046 ^{-152.870}	+6.889	265.845 ⁻³⁶	5.845 ^{-36.260}	-7.267		40.266205	7.601282		
16	878.169	8.169	+7.202	265.588	5.588	+6.694		40.244776		54.683286	
17	878.248	8.248	-6.889	272.539	12.539	+7.267	86.381171			59.938216	
12	871.280	1.280	-7.202	272.855	12.855	-6.694	92.581710		8.568320		
								178.962881	80.510981	16.169602	114.621502
								98.451900			98.451900
								1/2 = 49.225950			
14	871.002 ⁻¹⁵²	1.002 ^{-152.870}	+8.115	264.545 ⁻³⁶	4.545 ^{-36.260}	-1.423		36.882675	1.425846		
13	879.161	9.161	+10.943	264.422	4.422	-0.166		48.389946	1.520726		
14	881.945	11.945	+2.801	264.379	4.379	-0.722		12.265579	8.624290		
15	881.962	11.962	+4.297	263.700	3.700	-0.804		15.898900	9.617448		
19	886.242	16.242	+4.472	263.575	3.575	+8.468		15.987400		137.537256	
20	886.434	16.434	-7.994	272.168	12.168	+8.964	97.270992			147.314376	
17	878.248	8.248	-8.265	272.539	12.539	-6.580	103.634835		54.271840		
16	878.169	8.169	-7.202	265.588	5.588	-6.694	40.244776		54.683286		
13	871.046	1.046	-7.167	265.845	5.845	-1.043	41.891115		1.090978		
								283.041718	129.424500	131.234414	284.851632
								153.617218			153.617218
								1/2 = 76.808609			

面積計算書

工区 2

ブロック 10

計算者



精算者



備考

11. 福富 181-8

12. 福富 181-7

点	①	②	③	④	⑤	⑥	⑦	⑧	⑨	⑩
	X	X-(定数)	X _{n-1} -X _{n+1}	Y	Y-(定数)	Y _{n-1} -Y _{n+1}	+	-	+	-
	-152	-152.870		-36	-36.250					
15	870.668	0.668 =	+8.267	254.548	4.548 =	-9.409		37.598316	6.285212	
22	879.269	9.269 =	+8.493	255.136	5.136 =	+9.874		43.620048		91.522106
30	879.161	9.161 =	-8.267	264.422	14.422 =	+9.409	119.226674			86.195849
14	871.002	1.002 =	-8.493	264.545	14.545 =	-9.874	123.530685		9.893748	
							242.757359	81.218364	16.178960	177.717955
							161.538995			161.538995
							1/2 = 80.7694975			
22	879.269	9.269 =	+2.112	255.136	5.136 =	-9.188		10.847232	85.163572	
40	881.273	11.273 =	+6.794	255.234	5.234 =	-0.043		35.559796	0.484739	
28	886.063	16.063 =	+4.969	265.093	5.093 =	+8.341		25.307117		133.981483
29	886.242	16.242 =	-4.101	263.575	13.575 =	+8.607	55.671075			139.794894
35	881.962	11.962 =	-4.297	263.700	13.700 =	+0.804	58.868900			9.617448
34	881.945	11.945 =	-2.801	264.379	14.379 =	+0.722	40.275579			8.624290
33	879.161	9.161 =	-2.676	264.422	14.422 =	-9.243	38.593272		84.675123	
							193.408826	71.714145	170.323434	292.018115
							1/2 = 121.694681			121.694681
							1/2 = 60.8473405			

面積計算書

工区

2

ブロック

10

計算者



精算者



備考

13. 福富 181-P
14. 福富 181-10

点	①	②	③	④	⑤	⑥	③	×	⑤	②	×	⑥
	X	X-(定数)	X _{n-1} -X _{n+1}	Y	Y-(定数)	Y _{n-1} -Y _{n+1}	+	-	+	-		
	-152	-152.870		-36	-36.240							
18	870.371	0.371	+15.179	245.644	5.644	-8.039			85.670276	2.982439		
26	885.847	15.847	+15.692	246.509	6.509	+9.449			102.139228			149.738303
28	886.063	16.063	-4.574	255.093	15.093	+8.725	69.035382					140.149675
40	881.273	11.273	-6.794	255.234	15.234	+0.043	103.499796					0.484739
32	879.269	9.269	-10.605	255.136	15.136	-0.686	160.517280			6.358534		
15	870.668	0.668	-8.898	254.548	14.548	-9.492	129.448104			6.340656		
							462.500562	187.809504	15.681659	290.372717		
							274.691058			274.691058		
							1/3 = 137.345529					
17	870.078	0.078	+15.255	236.847	6.847	-7.919			104.450985	0.617682		
25	885.626	15.626	+15.769	237.725	7.725	+9.662			121.815525			150.97842
26	885.847	15.847	-15.255	246.509	16.509	+7.919	251.844795					125.492393
16	870.371	0.371	-15.769	245.644	15.644	-9.662	246.690236			3.584602		
							498.535031	226.266510	4.202284	276.470805		
							272.268521			272.268521		
							1/2 = 136.1342605					

面積計算書

工区

2

ブロック

10

計算者



精算者



備考

15 橋筋 181-3
-4
16 福宮 191-12
-12

点	①	②	③	④	⑤	⑥	③ ×	⑤	② ×	⑥
	X	X-(定数)	X _{n-1} -X _{n+1}	Y	Y-(定数)	Y _{n-1} -Y _{n+1}	+	-	+	-
18	869.906	9.906	+13.627	220.026	0.026	-0.608		0.354302	6.022848	
23	883.192	23.192	+12.208	220.899	0.899	+17.501		10.974992		405.883192
24	882.114	22.114	-13.114	237.527	17.527	+13.948	229.849078			352.674072
17	870.078	10.078	-12.549	236.847	16.847	-16.020	211.413003		161.449560	
7	869.565	9.565	-0.172	221.507	1.507	-16.821	0.259204		160.892865	
							441.52285	11329294	328.365273	758.557264
							430.191991			430.191991
							$\frac{1}{2} = 215.0959955$ 分筆後の座標なし			
19	873.057	13.057	+14.187	206.317	6.317	-13.012		89.619279	169.897684	
22	884.093	24.093	+10.133	207.014	7.014	+14.582		71.086890		351.324126
23	883.192	23.192	-14.187	220.899	20.899	+13.012	296.494113			301.774304
18	869.906	9.906	-10.135	220.026	20.026	-14.582	202.963510		144.449292	
							499.457623	160.706169	314.346976	653.098430
							338.751454			338.751454
							$\frac{1}{2} = 169.375727$			

面積計算書

工
区

区

ブ
ロ
ック

10

計
算
者

精
算
者



備
考

隅切 I . II

点	①	②	③	④	⑤	⑥	③ ×	⑤	② ×	⑥
	X	X-(定数)	X _{n-1} -X _{n+1}	Y	Y-(定数)	Y _{n-1} -Y _{n+1}	+	-	+	-
I	-152 882.637	-152.882 0.637	+ 2.397	-36 164.653	-36.164 0.653	- 1.501		1.565241	0.955137	
1	884.586	2.586	- 0.448	165.101	1.101	+ 1.949	0.493248			3.040114
21	882.189	0.189	- 1.949	166.602	2.602	- 0.448	5.071298		0.084672	
							5.564546	1.565241	1.041809	5.040114
							3.999305			3.999305
							1/2=1.9996525			
2	-152 907.662	-152.907 0.662	+ 0.201	-36 170.400	-36.170 0.400	- 2.993		0.080400	1.981366	
II	910.585	3.585	+ 2.722	171.071	1.071	+ 3.664		2.915262		13.135440
3	910.384	3.384	- 2.923	174.064	4.064	- 0.671	11.879072		2.270664	
							11.879072	2.995662	4.252030	13.135440
							8.883418			8.883410
							1/2=4.441705			

計年月日

計算者



檢査者



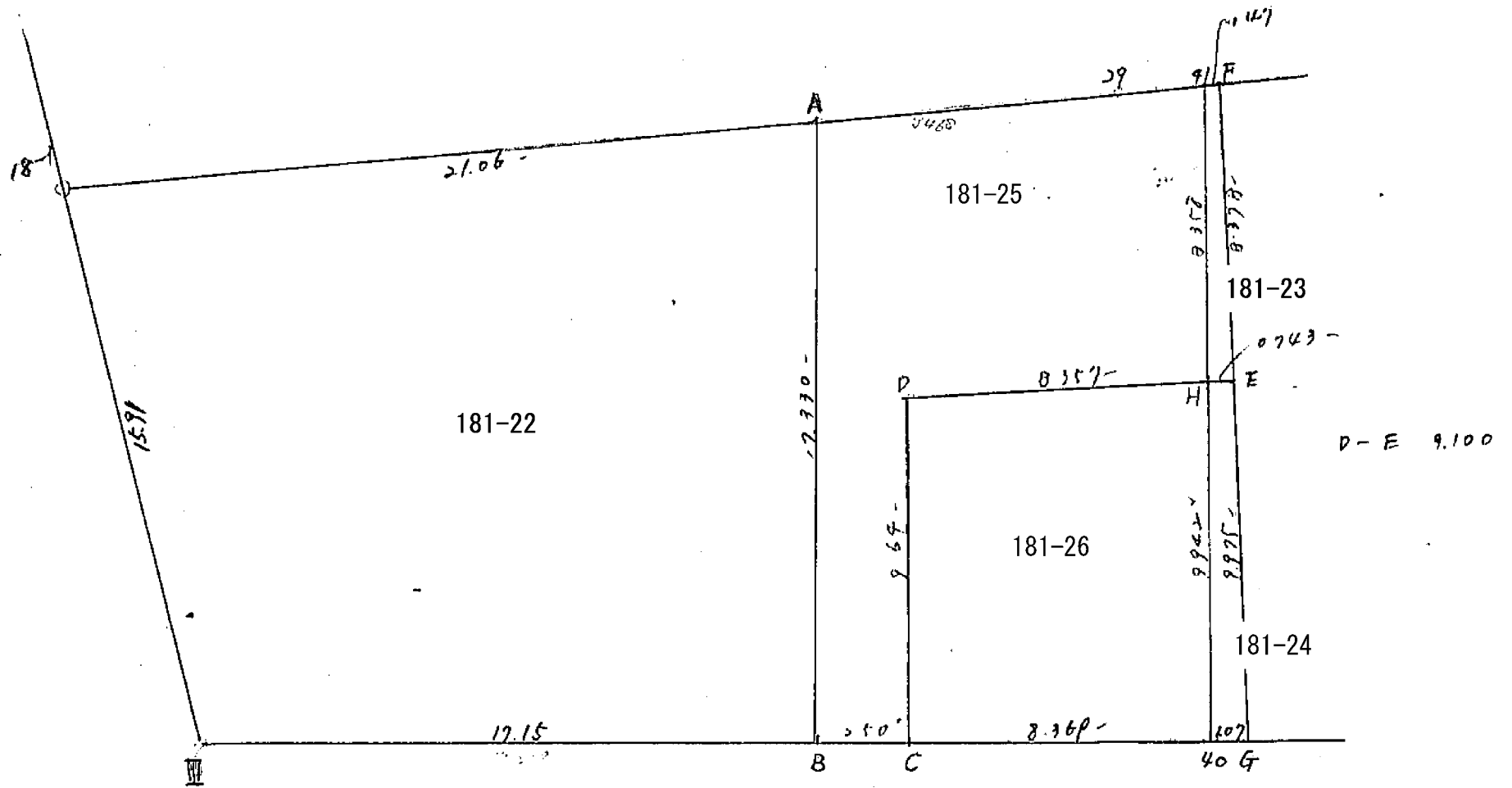
B.NO. 10

各筆面積計算書

地番	算式	隅切	地積	摘要
	福富 182-3		1265.02	
	" 181-19		333.95	
	" 181-20		399.17	
	" 181-18		41.99	
	" 181-17		222.46	
	" 181-24		695.73	
	" 181-5		193.26	
	" 181-6		136.24	
	" 181-13		49.22	
	" 181-14		76.80	
	" 181-8		80.76	
	" 181-7		60.84	
	" 181-9		137.34	
	" 181-10		136.13	
	" 181-3. -4		215.09	
	" 181-11. -12		169.27	
	隅切 I	1.99		
	" II	4.44		
	合計		4219.80	
	金伴		4219.65	
	差		0.15	

座標法面積計算 ()

測点	X	Δx	Y	Δy	(+) F ₁ Δx · Δy	(-) F ₂ Δx · Δy
			(-260)			
41	886.191		-261.163			
		+ 0.010		- 1.856	0.018560	
A	886.181		-260.693			
		+ 18.000		- 1.931		34.758000
B	904.526		-261.238			
		+ 0.071		- 3.543	0.251553	
40	904.455		-262.305			
		+ 18.264		- 3.468	63.379552	
41	886.191		-261.163			
Σ =					63.609665	34.758000
F = (F ₁) - (F ₂) =						28.851665
計算者					F / 2 =	14.4258325
点検者					N 0.3025 =	



座標法面積計算 (181-22)

測点	X	Δx	Y	Δy	(+) F ₁	(-) F ₂
					Δx · Δy	Δx · Δy
			(-270)			
181	-886.910		-293.096			
		+0.469		-25.137	11.789253	
H	-886.431		-272.041			
		-17.295		-5.191		29.778345
B	-903.726		-273.150			
		+1.154		-23.471	27.025534	
E	-902.572		-290.321			
		-15.672		-43.417	680.431224	
181	-886.900		-293.096			
				$\bar{Z} =$	719.306011	29.778345
				$F = (F_1) \sim (F_2) =$		129.527666
計算者				$F / 2 =$		64.763833
点検者				$\times 0.3025 =$		19.786

座標法面積計算 (181-26)

測点	X	Δx	Y	Δy	(+) F ₁	(-) F ₂
					$\Delta x \cdot \Delta y$	$\Delta x \cdot \Delta y$
			(-260)			
D	-894.270		-270.038			
		-0.259		-11.723		3.036257
H	-894.532		-261.685			
		-9923		-3.990		39.592770
40	-904.455		-262.305			
		+0.561		-12.960	7.270560	
C	-903.894		-270.655			
		+9.620		-20.693	199.066660	
D	-894.274		-270.038			
		-		-		
		-		-		
		-		-		
		-		-		
		-		-		
		-		-		
		-		-		
		-		-		
		-		-		
		-		-		
		-		-		
				$\bar{Z} =$	206.93722	42.629027
				$F = [F_1] \sim [F_2] =$		163.708193
計算者				$F / 2 =$		81.854097
点検者				$\times 0.3025 =$		

座標法面積計算 (181-25)

測点	X	Δx	Y	Δy	(+) F ₁	(-) F ₂
					Δx · Δy	Δx · Δy
			(-260)			
A	-886.431		-272.041			
		+0.189		-15.616	2.951428	
29	-886.242		-263.575			
		+0.051		-4.738	0.241638	
41	-886.191		-261.163			
		-8.341		-2.848		23.755168
H	-894.532		-261.685			
		+0.258		-11.723	3.024536	
D	-894.274		-270.038			
		-9.62		-20.693		199.066660
C	-903.894		-270.655			
		+0.168		-23.805	3.999240	
B	-903.726		-273.150			
		+17.295		-25.191	435.678345	
A	-886.431		-272.041			
		-		-		
		-		-		
		-		-		
		-		-		
		-		-		
		-		-		
		-		-		
				Σ =	445.895181	222.821828
				F = (F ₁) ~ (F ₂) =		223.073353
計算者				F / 2 =		111.536677
点検者				× 0.3025 =		

座標法面積計算 (181-24)

測点	X	Δx	Y	Δy	(+) F_1	(-) F_2
					$\Delta x \cdot \Delta y$	$\Delta x \cdot \Delta y$
			(-260)			
H	-894.532		-261.685			
		-0.023		-0.627		0.060021
E	-894.555		-260.942			
		-9.971		-2.180		21.776780
G	-904.526		-261.238			
		+0.071		-3.543	0.251553	
D	-904.455		-262.705			
		+9.923		-3.990	39.592770	
H	-894.532		-261.685			
	-	-	-	-		
	-	-	-	-		
	-	-	-	-		
	-	-	-	-		
	-	-	-	-		
	-	-	-	-		
	-	-	-	-		
	-	-	-	-		
				$\bar{z} =$	39.844323	21.797201
				$F = (F_1) \sim (F_2) =$		18.047122
計算者				$F / 2 =$		9.023561
点検者				$\times 0.3025 =$		

