

BLOCK NO. 11

街区計算

街区略図

工区

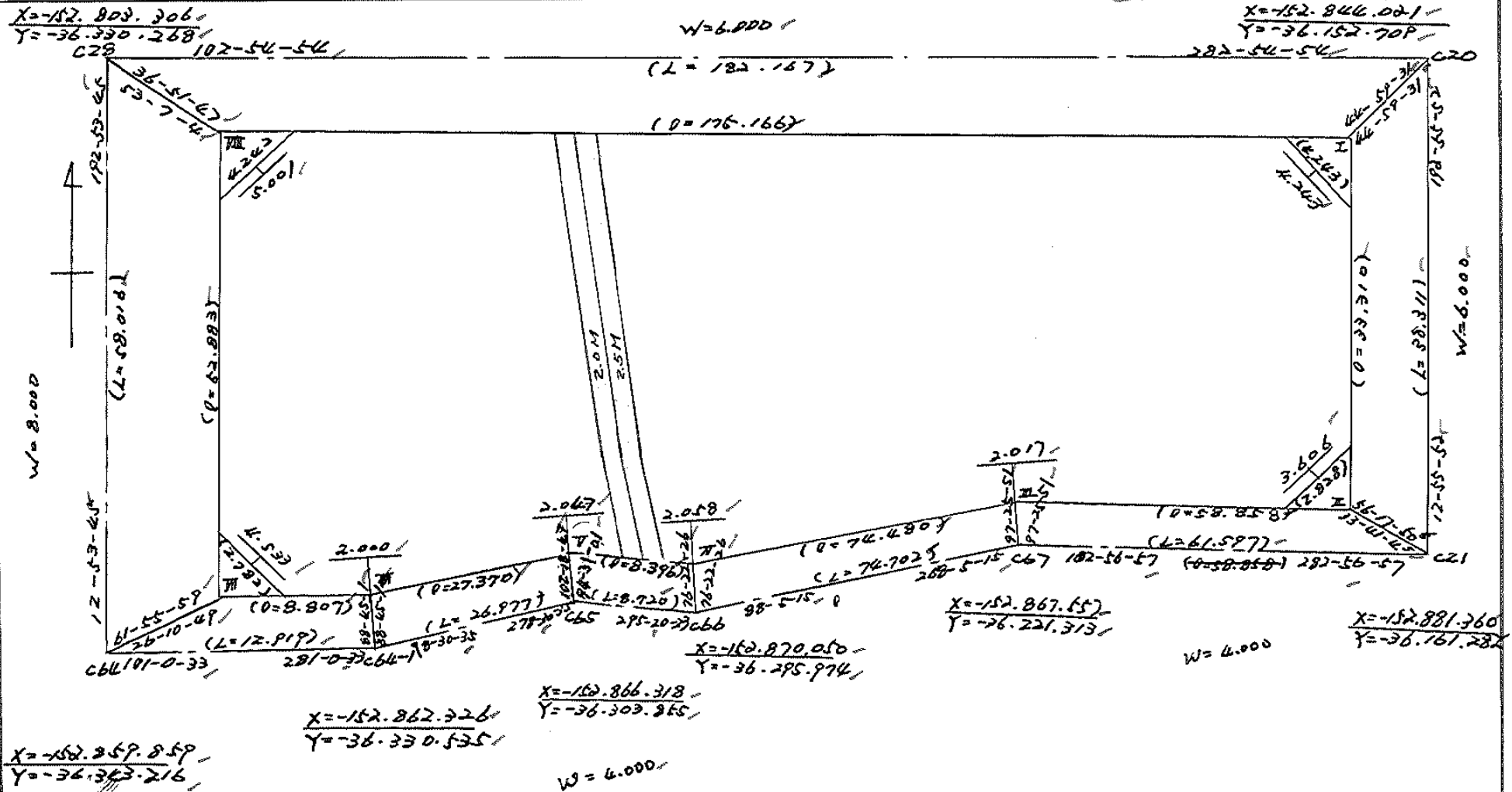
2

ブロック

//

記入者

点検者



面地計算

画地略図

工区

之

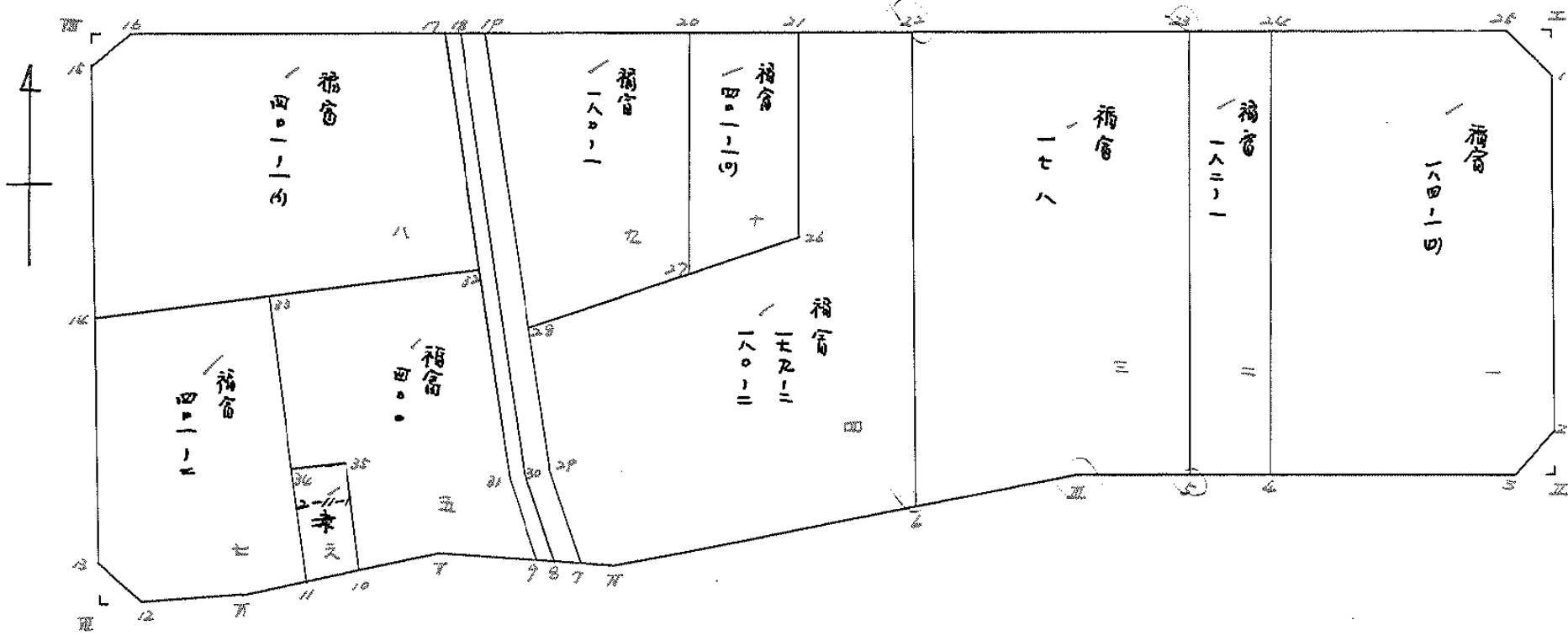
ブロック

//

記入者



点検者



面積計算書

工区

2

ブロック

11

計算者



精算者



備考

1. 福富 184-110)

2. 福富 182-1

点	① X	② X-(定数)	③ X _{n-1} -X _{n+1}	④ Y	⑤ Y-(定数)	⑥ Y _{n-1} -Y _{n+1}	⑦ +	⑧ ×	⑨ -	⑩ +	⑪ ×	⑫ -
	-152	-152,800		-36	-36,150							
1	849.198,	49.198,	+ 31.187	156.975,	6.975,	+ 4.092				217.529325		200.826236
2	876.790,	76.790,	+ 29.093	163.310,	13.310,	+ 8.732				387.227830		670.530280
3	878.291,	78.291,	- 5.751	165.707,	15.707,	+ 33.935	90.330957					2656.905085
4	871.039,	71.039,	- 39.697	197.245,	17.245,	+ 24.091	1875.484765					1711.400519
2K	838.594,	38.594,	- 25.436	189.798,	39.798,	- 38.017	1012.301928			1467.228098		
25	845.603,	45.603,	+ 10.604	159.228,	9.228,	- 32.823				97.853712	1496.827259	
							2778.117650	702.610867	2964.053367	5239.562157		
							2275.506783				2275.506783	
									1/2 = 1137.7533915			
2K	-152	-152,800		-36	-36,180					333.004626		27.923462
4	838.594,	38.594,	+ 33.987	189.798,	9.798,	+ 0.723				532.767430		1007.972371
4	871.039,	71.039,	+ 30.894	197.245,	17.245,	+ 14.189						
5	869.488,	69.488,	- 33.987	203.987,	23.987,	- 0.723	815.246169			50.239824		
23	837.052,	37.052,	- 30.894	196.522,	16.522,	- 14.189	610.430668			525.730828		
							1325.676937	865.771656	5759.70652	1035.975833		
							459.905181				459.905181	
									1/2 = 229.9525905			

面積計算書

工区

2

ブロック

//

計算者



精算者



備考

3. 福富 178
4. 福富 179-2
180-2

点	① X	② X-(定数)	③ X _{n-1} -X _{n+1}	④ Y	⑤ Y-(定数)	⑥ Y _{n-1} -Y _{n+1}	③ ×	⑤	② ×	⑥
							+	-	+	-
	-152	-152,800		-36	-36,190					
23	837.052	37.052+	44.190	196.522	6.522-	43.773		288.207180	1622.618236	
5	869.488	69.488+	28.497	203.987	13.987+	24.597		398.587537		1709.196336
III	865.549	65.549-	2.731	231.119	31.119+	53.311	84985989			3494.482739
6	866.757	66.757	40.251	257.298	67.298+	26.661	2708.811798			1777.808277
22	825.298	25.298-	29.705	247.780	57.780-	60.776	1946.354900		1537.511248	
							1510.152697	686.794717	3160.129484	6993.487452
							3823.357768			3823.357768
									1/2 = 1711.678984	
22	-152 825.298	-152,800 25.298+	44.814	-36 247.780	-36,200 47.780-	5.116		2141.212720	129.424568	
6	866.757	66.757+	42.737	257.298	57.298+	47.776		2449.744626		3197.382432
IV	868.035	68.035+	0.815	295.558	95.556+	39.223		77.978140		2668.536805
7	867.572	67.572-	6.825	296.521	96.521+	1.740	658.755825			117.675280
29	861.210	61.210-	26.256	297.296	97.296+	1.438	2554.603776			28.619980
28	861.316	41.316-	20.443	297.959	97.959-	30.576	2012.575837		1263.278016	
26	840.767	40.767-	19.373	266.720	66.720-	35.545	1292.666660		1447.443015	
21	821.943	21.943-	15.469	262.414	62.414-	18.940	965.482166		415.600420	
							7473.996164	447.835686	3257.366019	6063.514497
							2806.182478			2806.182478
									1/2 = 1403.071239	

面積計算書

工区

2

ブロック

11

計算者

精算者

備考

5. 橋 400
6. 赤 2-11-1

点	①	②	③	④	⑤	⑥	③	⑤	②	⑥
	X	X-(定数)	X _{n-1} -X _{n+1}	Y	Y-(定数)	Y _{n-1} -Y _{n+1}	+	-	+	-
	-152	-152.830		-36	-36.300					
22	834.377	4.377	+26.947	202.693	2.693	-24.900		72.494201	108.987300	
31	861.558	31.558	+30.899	201.786	1.786	-1.383		44.194614	43.644714	
9	865.276	35.276	+2.847	201.310	1.310	+1.341		3.729470		47.304116
7	864.405	34.405	-3.902	203.127	3.127	+21.403	11.888844			736.370215
10	861.474	21.474	-11.437	222.713	22.713	+19.817	266.482481			623.720248
25	852.668	22.668	-8.722	222.944	22.944	+3.410	200.117468			78.564680
24	852.752	22.752	-18.067	226.223	26.223	+3.742	473.770941			84.137984
23	834.601	4.601	-18.378	226.686	26.686	-23.430	490.344210		108.261430	
							1442.715094	131.510385	260.893444	1570.098243
							1311.204709			1311.204709
									1/2 = 645.602344	
35	-152	-152.860		-36	-36.320					
	852.668	2.668	+8.722	222.944	2.944	-3.410		25.677468	9.364680	
10	861.474	11.474	+8.313	222.713	2.713	+3.069		22.443169		25.213706
11	860.981	10.981	-8.722	226.013	6.013	+3.410	42.444386			38.443310
24	852.752	2.752	-8.313	226.223	6.223	-3.069	41.731799		8.444888	
							104.177185	48.230737	17.810468	73.747016
							45.946448			45.946448

面積計算書

工区

2

ブロック

11

計算者



精算者



備考

7. 福富 401-2

8. 福富 401-14)

点	①	②	③	④	⑤	⑥	③ × ⑤		② × ⑥		
	X	X-(定数)	X _{n-1} -X _{n+1}	Y	Y-(定数)	Y _{n-1} -Y _{n+1}	+	-	+	-	
33	⁻¹⁵² 834.601	^{-152,800} 34.601	26318	⁻³⁶ 326.686	^{-36,320} 6.686	7.331		175.962148	253.659731		
11	860.981	60.981	25754	326.013	6.013	3.510		154.858802		214.043310	
11	860.355	60.355	1926	330.196	10.196	10.865		19.637496		655.757075	
12	859.055	59.055	3.632	336.878	16.878	8.199		61.300896		484.171945	
13	844.723	56.723	24.392	338.395	18.395	3.534		448.690840		200.459082	
14	834.663	34.663	22.122	333.344	13.344	11.709		295.195768		405.869067	
								824.825200	330.920750	857.988080	1353.972330
								474.004250		474.004250	
								1/2 = 247.002125			
17	⁻¹⁵² 812.540	^{-152,800} 12.540	26582	⁻³⁶ 303.421	^{-36,300} 3.421	21.422		90.940443	269.631880		
22	834.377	34.377	22.123	302.693	2.693	29.923		59.577239		1028.662971	
14	834.663	34.663	24.329	333.344	33.344	25.016		911.226176		867.129608	
15	810.048	10.048	26869	327.709	27.709	9.229		744.513121		92.732992	
16	807.794	7.794	2492	324.115	24.115	24.288		60.694580	189.300672		
								1555.789271	210.612262	550.665544	1976.772579
								1345.127025		1345.127025	
								1/2 = 672.5635125			

面積計算書

工区

乙

ブロック

11

計算者



批准者



備考

9 福富 180-1
10. 福富 401-1(10)

点	①	②	③	④	⑤	⑥	③ × ⑤	② × ⑥
	X	X-(定数)	X _{n-1} -X _{n+1}	Y	Y-(定数)	Y _{n-1} -Y _{n+1}	+ -	+ -
	-152	-152, 810		-36	-36, 270			
20	819.118	9.118	+ 27.416	274.730	4.730	- 19.122	129.677680	174.354396
27	840.996	30.996	+ 22.198	279.761	9.761	+ 23.229	216.674678	720.006084
28	841.316	31.316	- 27.416	297.959	27.959	+ 19.122	766.523944	598.824452
19	813.580	3.580	- 22.198	298.883	28.883	- 23.229	641.44834	83.159820
							1407.668778	346.352358
							1061.316420	1318.830636
								1061.316420
								1/2 = 430.658210
	-152	-152, 810		-36	-36, 260			
21	821.943	11.943	+ 21.649	262.414	2.414	- 8.010	52.260686	95.663430
26	840.767	30.767	+ 19.053	266.720	6.720	+ 17.347	128.036160	433.715149
27	840.996	30.996	- 21.649	279.761	19.761	+ 8.010	427.805889	248.277960
20	819.118	9.118	- 19.053	274.730	14.730	- 17.347	280.650690	158.169946
							708.456479	180.296846
							429.149733	243.833376
								781.993109
								428.149733
								1/2 = 264.0798665

面積計算書

工区

2

ブロック

//

計算者



精算者



備考

隔切

工区

点	①	②	③	④	⑤	⑥	③ × ⑤	② × ⑥
	X	X-(定数)	X _{n-1} -X _{n+1}	Y	Y-(定数)	Y _{n-1} -Y _{n+1}	+ -	+ -
I	-152 846.274	-152.865 1.274	+3.595	-36. 156.204	-36.156 0.304	-2.253	1.092880 2.098625	2.870222
1	848.198	4.198	-0.671	156.975	0.975	+2.924	0.654225	12.274952
25	845.603	0.603	-2.924	159.228	3.228	-0.671	9.438672	0.404613
							1.092880 10.092897 9.000017 1.993362	2.274935
							x ^{1/2} = 4.5000085	9.000017
2	-152 876.790	-152.876 0.790	+0.448	-36 163.310	-36.163 0.310	-1.969	0.138880	1.539710
II	878.739	2.739	+1.501	163.758	0.758	+2.397	1.137758	6.565383
3	878.291	2.291	-1.969	165.707	2.707	-0.448	5.275943	1.026368
							5.275943 3.999305	2.566078
							x ^{1/2} = 1.9996525	3.999305

面積計算書

工区

2

ブロック

11

計算者



精算者



備考

1877

VII

VIII

点	①	②	③	④	⑤	⑥	③ × ⑤		② × ⑥	
	X	X-(定数)	X _{n-1} -X _{n+1}	Y	Y-(定数)	Y _{n-1} -Y _{n+1}	+	-	+	-
12	859.055	2.055	+1.950	336.978	0.978	+0.446		1.712100		1.362530
VII	858.673	2.673	-2.332	338.861	2.861	+1.517	6.625212			4.054961
13	856.723	0.723	+0.382	339.395	2.095	-1.963		0.914890	1.419249	
							6.625212	2.626990	1.419249	4.417671
							3.998222			3.998222
							x 1/2 = 1.999111			
15	810.048	2.048	-0.670	327.709	3.709	+2.924	2.485030			8.912352
VII	807.124	0.124	-2.254	327.039	3.039	-3.594	6.849906		0.445656	
16	807.794	0.794	+2.924	324.115	0.115	+0.670		0.336260		0.531980
							9.334936	0.336260	0.445656	9.446332
							8.998676			8.998676
							x 1/2 = 4.499338			

面積計算書

工
区

>

ブ
ロ
ック

//

計
算
者

三
和

精
算
者

三
和

備
考

水
路
通
路

点	①	②	③	④	⑤	⑥	③	×	⑤	②	×	⑥
	X	X-(定数)	X _{n-1} -X _{n+1}	Y	Y-(定数)	Y _{n-1} -Y _{n+1}	+	-	+	-		
	-152	-152,810		-36	-36,290							
19	813.520	3.520	+48.208	298.883	8.883	-4.108		428.231664		14.706640		
29	821.210	5.210	+43.992	297.296	7.296	-2.362		393.925632		120.948020		
7	867.572	57.572	+5.086	296.521	6.521	+1.886		33.165806			108.580792	
8	866.296	56.296	-6.169	299.182	9.182	+3.269	56.643758				184.031624	
30	861.403	51.403	-53.294	299.790	9.790	+2.222	521.748260				114.217466	
18	813.002	3.002	-47.823	301.404	11.404	-0.907	445.373492			2.722814		
							1123.765410	855.323102	138.387474	406.829882		
							268.442408	1/6=134.221204		268.442408		
	-152	-152,810		-36	-36,290							
18	813.002	3.002	+48.863	301.404	11.404	-3.631		557.233652		10.902622		
30	861.403	51.403	+53.294	299.790	9.790	-2.222		521.748260		114.217466		
8	866.296	56.296	+3.873	299.182	9.182	+1.520		34.561886			84.569920	
9	865.278	55.278	-4.738	301.310	11.310	+2.604	53.586780				143.938704	
31	861.558	51.558	-52.736	301.786	11.786	+2.111	621.546496				108.838938	
17	812.540	2.540	-48.556	303.421	13.421	-0.382	651.670076			0.970280		
							1326.803352	1114.543798	126.088008	338.347562		
							212,259554			212,259554		

計年
月
算日

計
算
者



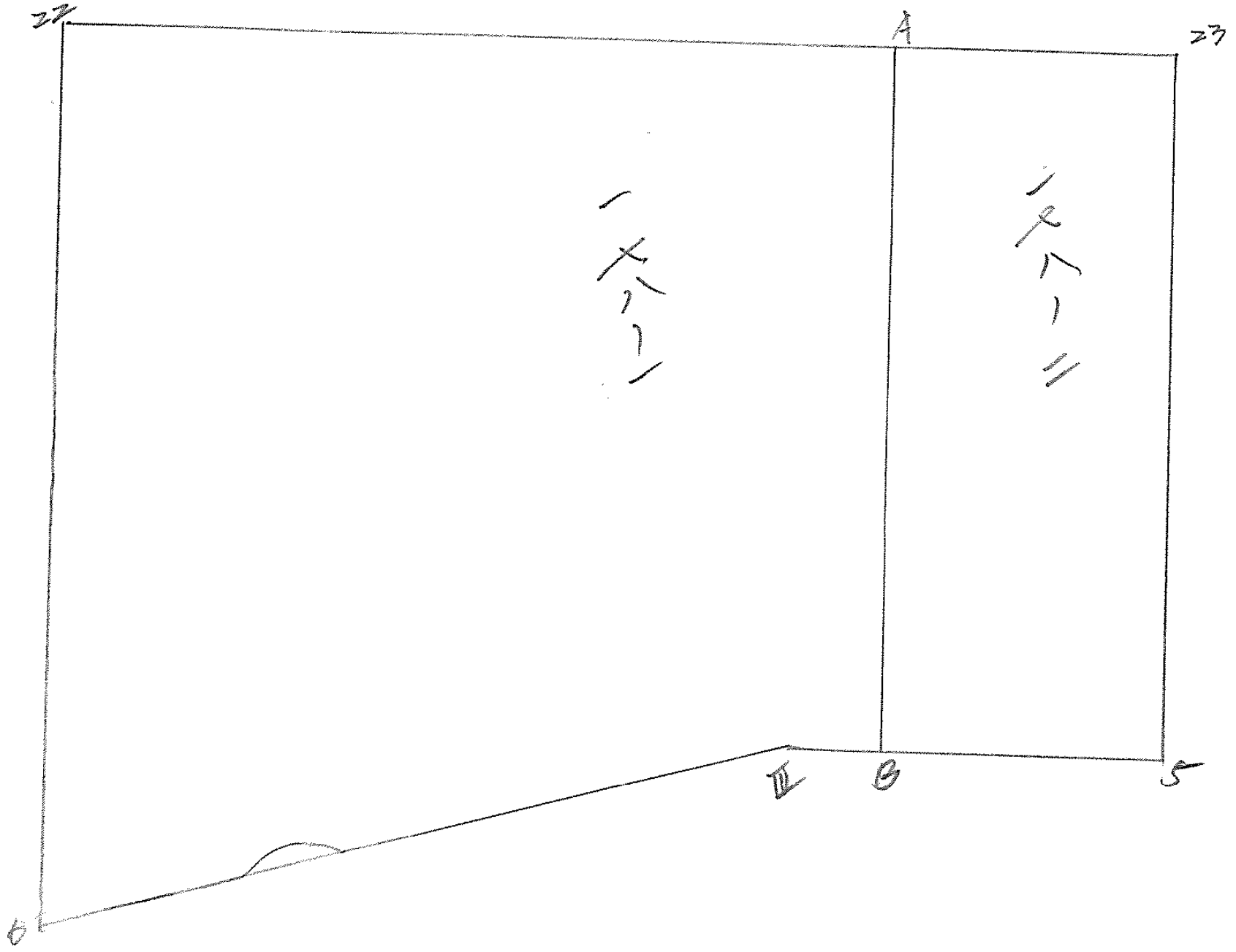
檢
查
者



B.NO. //

各筆面積計算書

地番	算式	隅切	地積	摘要
福富	184-1(四)		1137.75	
福富	182-1		227.95	
福富	178		1911.67	
福富	179-2, 180-2		1403.07	
福富	400		655.60	
東 ²⁻¹¹⁻¹			27.97	
福富	401-2		247.00	
福富	401-1(四)		672.56	
福富	180-1		530.65	
福富	401-1(四)		264.07	
水路			134.22	
通路			106.22	
隅切 I		4.50		
隅切 II		1.99		
隅切 III		1.99		
隅切 IV		4.49		
計			7333.70	
全球			7333.66	
		差	0.04	



面積計算書

工
区

ブ
ロ
ック

//

計
算
者

精
算
者

備
考

178-1 178-2

点	①	②	③	④	⑤	⑥	③ × ⑤		② × ⑥	
	X	X - (定数)	X _{n-1} - X _{n+1}	Y	Y - (定数)	Y _{n-1} - Y _{n+1}	+	-	+	-
22	25.298	- 5.298	- 22.698	47.780	- 47.780	- 47.726	1562.310440			25.298 × 47.726
A	- 224.059	- 14.059	+ 41.196	- 209.572	9570	- 40.771		294.228110		209.572 × 40.771
B	- 266.494	- 46.494	+ 31.490	- 217.009	- 17.009	+ 11.547		555.613410		266.494 × 11.547
II	- 265.549	- 45.549	+ 0.263	- 221.119	- 21.119	+ 40.289		555.5297		265.549 × 40.289
6	- 266.757	- 46.757	- 40.251	- 257.298	- 57.298	+ 26.661	2906.301798			266.757 × 26.661
							2968.612208	925.495819	685.461807	266.757 × 26.661
							2923.116419		2923.116419	
							2923.116419 × 1/2 = 1461.5582095			
A	224.059	- 4.059	- 29.442	- 209.572	- 19.572	- 20.487	576.238224			224.059 × 20.487
23	- 227.052	- 7.052	+ 25.429	- 196.522	- 6.522	- 5.585		231.067908		227.052 × 5.585
5	- 269.488	- 49.488	+ 29.442	- 208.987	- 18.987	+ 20.487		411.205254		269.488 × 20.487
B	- 266.494	- 36.494	- 25.429	- 217.009	- 27.009	+ 5.585	956.901861			266.494 × 5.585
							555.140628	642.273193	122.542153	1012.809646
							890.267493		890.267493	
							890.267493 × 1/2 = 445.1337465			
							= 295.17 m ² = 295			

= 295.17 m² = 295