

BLOCK NO. 13

街区計算

街区略図

工区

2

ブロック

13

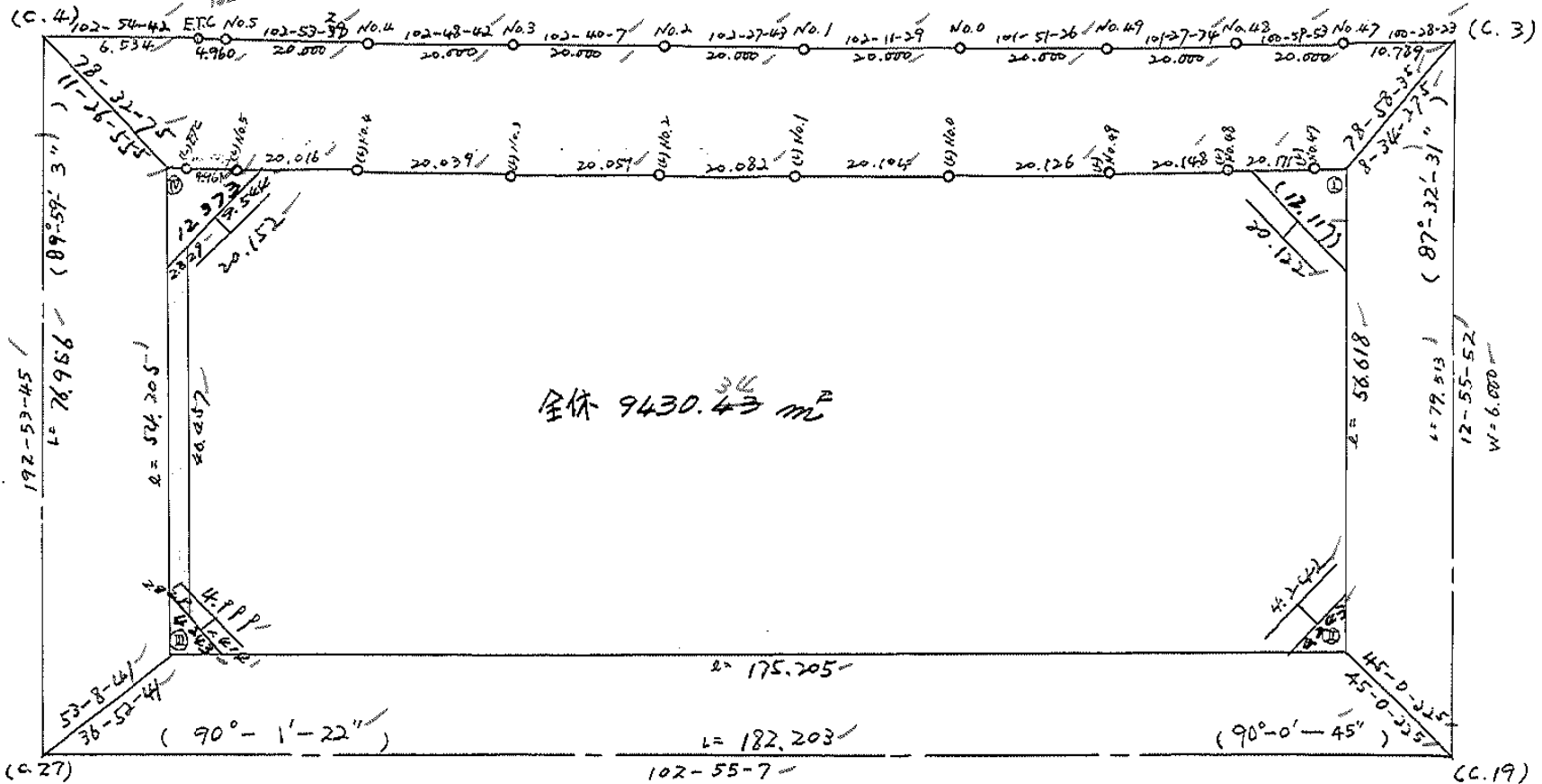
記入者

点検者

$X = -152,671.773$
 $Y = -36,300.153$

$W = 39.50$

$X = -152,710.025$
 $Y = -36,171.944$



$X = -152,746.787$
 $Y = -36,317.328$

$W = 6.000$

$X = -152,787.522$
 $Y = -36,139.737$

面積計算書

工区

Z

ブロック

13

計算者



精算者



備考

全体

点	①	②	③	④	⑤	⑥	③ ×	⑤	② ×	⑥
	X	X-(定数)	X _{n-1} -X _{n+1}	Y	Y-(定数)	Y _{n-1} -Y _{n+1}	+	-	+	-
I	-152.728.746	128.7461	+ 56.460	-36.129.320	29.320	-	5.755		1655.407200	740.933230
II	-152.783.928	183.928	+ 16.011	-36.151.990	41.990	-	183.440		672.301890	33739.752320
III	-152.744.757	144.757	- 92.009	-36.312.760	212.760	-	158.672	19575.834840		22968.982704
IV	-152.691.919	91.919	- 52.273	-36.300.662	200.662	-	14.563	10489.204726		1338.616397
(L) ETC	-152.692.484	92.484	+ 1.673	-36.298.197	198.197	-	7.301		331.583581	675.225684
(L) No5	-152.693.592	93.592	+ 5.573	-36.293.361	193.361	-	24.348		1077.600853	2278.778016
(L) No4	-152.698.057	98.057	+ 8.909	-36.273.849	173.849	-	39.052		1548.820741	3829.321964
(L) No3	-152.702.501	102.501	+ 8.843	-36.254.309	154.309	-	39.111		1364.554487	4008.976611
(L) No2	-152.706.900	106.900	+ 8.733	-36.234.738	134.738	-	39.180		1176.666954	4198.302000
(L) No1	-152.711.235	111.235	+ 8.580	-36.215.129	115.129	-	39.260		987.806820	4367.046840
(L) No0	-152.715.480	115.480	+ 8.382	-36.195.478	95.478	-	39.347		800.296596	4513.791560
(L) No09	-152.719.616	119.616	+ 8.139	-36.175.782	75.782	-	39.443		616.789698	4718.013888
(L) No48	-152.723.619	123.619	+ 7.852	-36.156.035	56.035	-	39.547		439.786820	4588.760593
(L) No47	-152.727.468	127.468	+ 5.127	-36.136.235	36.235	-	26.715		195.776845	3425.307620
									30065.039566	10867.592485
									38242121173	57447.568244
									19207447081	19207447081
									1/2 = 9603.7235425	

$$9603.72 - (88.93 + 38.19 + 4.50 + 4.49 + 37.78)$$

$$= 9430.83$$

圖地計算

面地略図

工区

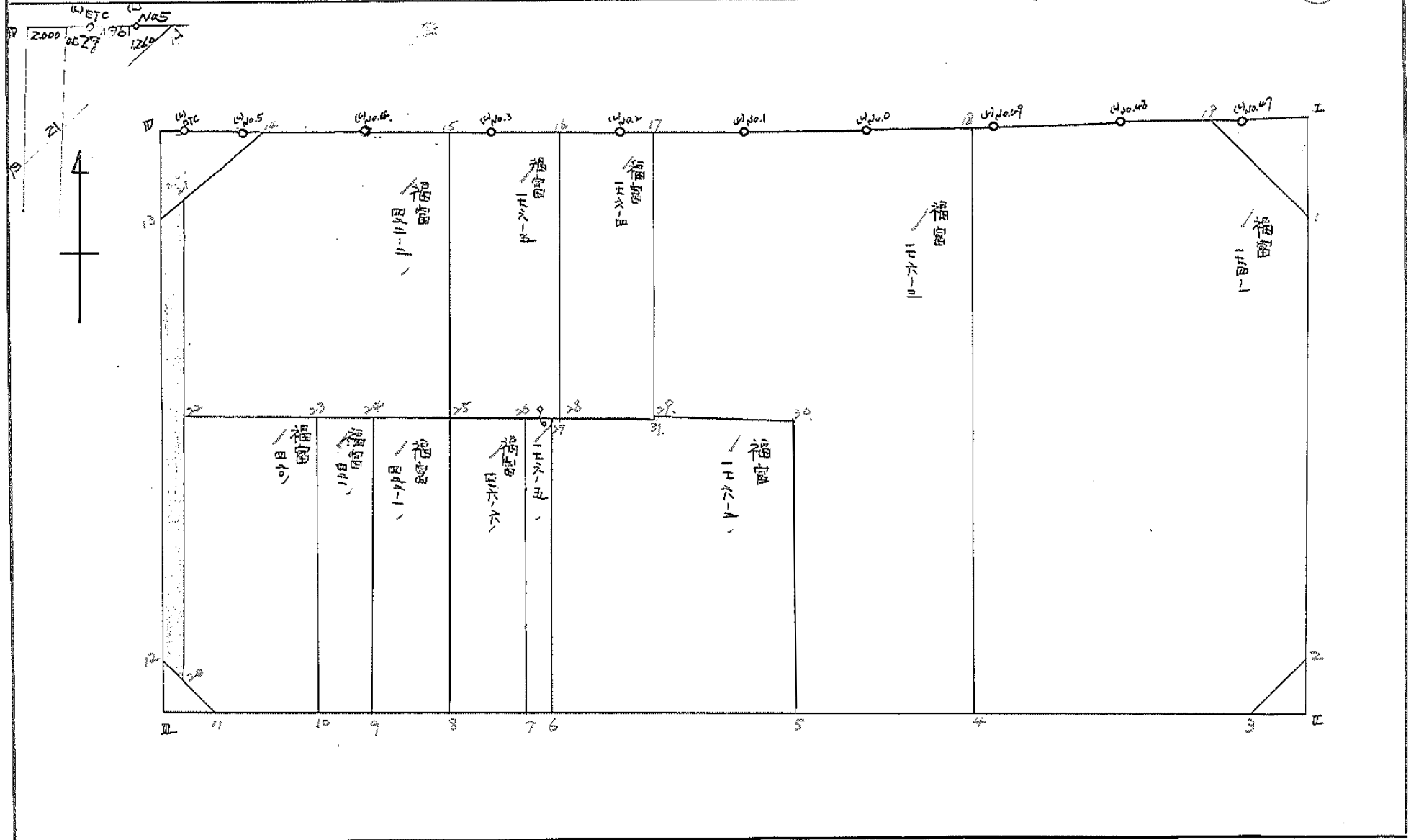
2

ブロック

13

記入者

点検者



面積計算書

工
区

2

フ
ロ
ック

13

計
算
者



精
算
者



備
考

福
富

174-1
176-3

点	① X	② X-(定数)	③ X _{n-1} -X _{n+1}	④ Y	⑤ Y-(定数)	⑥ Y _{n-1} -Y _{n+1}	⑦	⑧	⑨	⑩	
	-152,	-152,700		-36,	-36,100						
1	737.274	37.274+	53.864	131.278	31.278+	3.398		1681.758192		126.657052	
2	781.004	81.004+	45.983	141.319	41.319+	13.636		1877.9711577		110.4570544	
3	783.257	83.257-	8.035	144.914	44.914+	48.447	360.883990			4033.551879	
4	772.969	72.969-	63.992	189.766	89.766+	32.541	5744.305872			2374.484227	
18	719.265	19.265-	53.353	177.455	77.455-	13.984	4132.456615		269.401760		
(4) No.49	719.616	19.616+	4.354	175.782	75.782-	21.420		329.954828	420.174170		
(6) No.48	723.619	23.619+	7.521	156.035	56.035-	37.861		421.607340	894.238959		
19	727.140	27.140+	13.655	137.921	37.921-	24.757		57.811255	671.904980		
								10237.646477	4854.103192	2255.720419	7639.263706
					$\frac{1}{2} = 2691.7716425$		5383.543285			5383.543285	
18	-152,	-152,700		-36,	-36,100						
	719.265	19.265+	57.489	177.455	77.455-	5.712		4452.810495	110.041680		
4	772.969	72.969+	47.057	189.766	89.766+	41.292		4224.118662		3013.035748	
5	766.722	66.322-	33.134	218.747	118.747+	22.879	3934.563098			1517.381038	
30	739.875	39.835-	32.039	212.645	112.645+	18.487	3609.033155			736.429645	
29	734.283	34.283-	32.142	237.234	137.234+	18.507	4410.975228			634.475481	
17	707.693	7.693-	23.049	231.152	131.152-	22.105	3022.922448		170.053765		
(4) No.1	711.234	11.234+	7.787	215.129	115.129-	35.674		896.509523400	761.716		
(4) No.0	715.480	15.480+	8.031	195.478	95.478-	37.674		766.783818	三和測量建設株式会社	582.173520	
					$\frac{1}{2} = 2318.6357155$					99	

14977.493929 10340.222498 1264.050681 5901.322112
4637.271431 4637.271431

面積計算書

工
区

2

ブ
ロ
ック

13

計
算
者



精
算
者



備
考

福 留

176-2

176-6

点	① X	② X-(定数)	③ X _{n-1} -X _{n+1}	④ Y	⑤ Y-(定数)	⑥ Y _{n-1} -Y _{n+1}	③ +	⑤ -	② +	⑥ -
5	-1521 766.322	-152,700 66.322	+ 17.484	-36, 218.747	-36,200 18.747	+ 45.348				3007.570056
6	757.319	57.319	- 35290	257.993	57.993	+ 33.218	2016.512970			1904.022542
27	731.032	31.032	- 22721	251.965	51.965	- 20.733	1191.089765			643.386156
31	734.398	34.398	+ 3251	237.760	37.260	- 14.731		121.132260	506.716938	
29	734.283	34.283	+ 5437	237.234	37.234	- 24.615		202.441258	813.876045	
30	739.335	39.335	+ 32,039	212.645	12.645	- 18.487		405.133155	736.429645	
							3237.667135	1056.47221	2130.409084	1911.592598
							2181.183514			2181.183514
									1/2 = 1090.591757	
7	-152, 756.425	-152,700 56.425	+ 23,785	-36, 261.891	-36,200 61.891	+ 16,931				955.331675
8	753.925	53.925	- 28,780	272.792	72.792	+ 4,867	2074.955162			262.452975
25	727.645	27.645	- 23,785	266.758	66.758	- 16,931	1587.839030			468.051475
26	730.140	30.140	+ 28,780	255.861	55.861	- 4,867		1607.679580	466.91380	
							3682.92770	3077.751015	6147.18875	1217.84650
							602.035715			602.035715
									1/2 = 301.5178875	

座標法面積計算 (176~7)

測点	X	Δx	Y	Δy	(+) F ₁ Δx · Δy	(-) F ₂ Δx · Δy
			(-200)			
5	766.322		218.747			
		+3.555		52.992	188.386560	
1	762.767		234.245			
		+26.434		62.400	1649.481600	
29	736.333		228.155			
		-3.502		40.300		142.881600
30	739.835		212.645			
		-26.487		31.392		831.479904
5	766.322		218.747			
Σ =					1837.868160	974.361504
F = (F ₁) ~ (F ₂) =						863.506656
計算者					F / 2 =	431.753328
点検者					√ 0.3025 =	

座標法面積計算 (176~2)

測点	X	ΔX	Y	ΔY	(+) F_1 $\Delta X \cdot \Delta Y$	(-) F_2 $\Delta X \cdot \Delta Y$
			(-220)			
5'	762.767		234.245			
		+5.448		-52.238	284.592624	
6	757.319		257.993			
		+26.287		69.958	1838.985946	
27	731.032		251.965			
		-3.366		-49.225		165.691350
31	734.398		237.260			
		+0.115		34.494	3.966925	
29	734.283		277.234			
		-2.050		-25.389		52.047450
29'	736.333		228.155			
		-26.434		-22.400		592.121600
5	762.767		234.245			
Σ =					2127.545495	809.860400
F = (F ₁) - (F ₂) =						1317.685095
計算者					F / 2 =	658.8425475
点検者					× 0.9025 =	

座標法面積計算 (176~8)

測点	X	Δx	Y	Δy	(+) F_1	(-) F_2
					$\Delta x \cdot \Delta y$	$\Delta x \cdot \Delta y$
			(-200)			
A	-733.746		-240.111			
		-0.652		-77.371		50.405892
91	-734.398		-237.260			
		+0.115		-74.494	8.566810	
29	-734.283		-237.234			
		-2.050		-65.389		134.047450
29'	-736.333		-228.155			
		-26.234		-62.400		1649.481600
5'	-762.767		-234.245			
		+2.729		-80.386	219.373794	
B	-760.038		-246.141			
		+26.292		-86.252	2267.737584	
A	-733.746		-240.111			
		-				
		-				
		-				
		-				
		-				
		-				
		-				
		-				
		-				
$\bar{Z} =$					2495.677788	1833.974942
$F = (F_1) \sim (F_2) =$						661.702846
計算者 $F / 2 =$						330.851423
点検者 $\times 0.3025 =$						

面積計算書

工
区

2

ブ
ロ
ック

13

計
算
者



精
算
者



備
考

福島

422-1

11

421

点	①	②	③	④	⑤	⑥	③	×	⑤	②	×	⑥
	X	X-(定数)	X _{n-1} -X _{n+1}	Y	Y-(定数)	Y _{n-1} -Y _{n+1}	+	-	+	-		
8	-152,700 753.925	-152,700 539.25+	23.015	-36, 272.792	-36,200 72.792+	20.267			1675.307880			1072.897775
9	750.660	50.660-	29.539	287.025	87.025+	8.198	2570.631475					415.310680
24	724.386	24.386-	23.015	280.990	80.990-	20.267	1863.984850		494.231062			
25	727.645	27.645+	29.539	266.758	66.758-	8.198			1971.964562	226.633710		
							1134.66325	3647.272112	720.864172	1508.208655		
							787.343883					787.343883
									1/2 = 393.6719415			
9	-152,700 750.660	-152,700 50.660+	24.977	-36, 287.025	-36,280 7.025+	11.688			175.463175			592.114080
10	749.363	49.363-	27.568	292.678	12.678-	0.382	349.507104			18.856666		
23	723.092	23.092-	24.977	286.643	6.643-	11.688	1659.22211			259.899276		
24	724.386	24.386+	27.568	280.990	0.990+	0.382			27.292320			9315.452
							515.429315	202.755745	288.155762	601.429532		
							312.673570					312.673570
									1/2 = 156.336785			

座標法面積計算 (421-1)

測点	X	Δx	Y	Δy	(+) $\frac{F_1}{\Delta x \cdot \Delta y}$	(-) $\frac{F_2}{\Delta x \cdot \Delta y}$
			(-280)			
23	723.092		286.643			
		-1.294		7.633		9.877102
24	724.386		280.990			
		-26.274		8.015		210.586110
9	750.660		287.025			
		+1.232		19.420	23.925440	
10	749.428		292.395			
		+26.336		19.038	501.384768	
23	723.092		286.643			
Σ =					525.310208	220.463212
F = (F ₁) ~ (F ₂) =						304.846996
計算者 :					F / 2 =	152.423498
点検者 :					√ 0.3025 =	

座標法面積計算 (421-2)

點號	X	ΔX	Y	ΔY	(+) F_1 $\Delta X \cdot \Delta Y$	(-) F_2 $\Delta X \cdot \Delta Y$	
			(-280)				
10'	749.428		292.395				
		+0.065		25.073	1.629745		
10	749.363		292.678				
		+26.271		19.321	507.581991		
23	723.092		286.643				
		-26.336		19.038		501.384768	
10'	749.428		292.395				
					Σ =	509.211736	501.384768
					F = (F ₁) - (F ₂) =		7.826968
計算者					F / 2 =		3.913484
點檢者					√ 0.3025 =		

面積計算書

工区

2

ブロック

13

計算者



精算者



備考

福島

420

422-2

点	①	②		③	④	⑤		⑥	③	⑤	②	⑥
	X	X-(定数)	X _{n-1} -X _{n+1}	Y	Y-(定数)	Y _{n-1} -Y _{n+1}	+	-	+	-		
10	-152, 749.363	152,700 47.363+	22.336	-36, 292.678	36,200 92.678+	23.193			2070.055808			1144.876059
11	745.422	45.428	5.133	309.836	109.836+	17.909	563.88188					813.570052
20	744.230	44.230	26.192	310.587	110.587	5.040	2929.670804			2229.97200		
22	718.936	18.936	21.138	304.796	104.796	23.944	2215.177848			453.403584		
23	723.092	23.092	30.427	286.643	86.643	12.118			2636.286564	279.828856		
									5708.636810	1706.312369	956.151640	1958.446111
									1702.294471			1002.294471
										1/2 = 501.1472355		
22	-152, 718.936	152,600 118.936-	28.700	-36, 304.796	36,200 104.796+	33.460	3007.645200					3977.578560
21	698.945	98.945	25.063	300.218	100.218	12.663	2511.763734			1262.940535		
14	693.873	93.873	0.888	292.133	92.133	26.369	81.814104			2475.387137		
(4) No. 4	698.057	98.057	7.185	273.849	73.849	31.480			530.605065	3086.884360		
15	701.058	101.058	27.588	260.653	60.653	7.091			1774.600964	716.622278		
25	727.645	127.645	17.878	266.758	66.758	44.143			1173.477524			5134.633235
									564.223038	3518.705553	7531.714310	9614.231795
									2082.517495			2082.517495
										1/2 = 1041.2587425		

分筆後の座標なし

面積計算書

工区

Z

ブロック

13

計算者



計算者



備考

福富

176-5
176-4

点	①	②	③	④	⑤	⑥	⑦	⑧	⑨	⑩
	X	X-(定数)	X _{n-1} -X _{n-1}	Y	Y-(定数)	Y _{n-1} -Y _{n-1}			+	-
15	-152, 701.058	-152,700 1.058	- 25.144	-36, 260.653	-36,200 60.653	12.449	1525.059032		13.171042	
(1) No.3	702.501	2.501	+ 3.448	254.309	54.309	15.263		187.257432	38.172763	
16	704.506	4.506	+ 28.652	245.390	45.390	2.876		1300.514280	12.959256	
28	731.153	31.153	+ 26.526	251.433	51.433	6.575		1364.311758		204.830975
27	731.032	31.032	+ 26.166	251.965	51.965	6.560		1359.716190		203.569920
6	757.319	57.319	+ 25.393	257.993	57.993	9.926		1472.616219		563.718391
7	756.425	56.425	- 27.179	261.891	61.891	- 2.132	1682.135189		120.298100	
26	730.140	30.140	- 28.780	255.861	55.861	4.867	1607.679580			146.691380
25	727.645	27.645	- 29.082	266.758	66.758	4.792	1941.456156			132.474840
							6756.320257	5681.415909	184.601161	1256.515509
							1071.914348			1071.914348
									1/2 = 535.957174	
16	-152, 704.506	-152,700 4.506	- 24.253	-36, 245.390	-36,200 45.390	16.695	1100.813670		75.227670	
(1) No.2	706.900	6.900	+ 3.187	234.738	34.738	14.238		110.710006	98.242200	
17	707.693	7.693	+ 27.498	231.152	31.152	2.522		856.617696		174.01746
31	734.398	34.398	+ 28.460	237.260	37.260	20.281		874.119600		697.625838
28	731.153	31.153	- 29.892	251.433	51.433	8.130	1537.435236			253.273890
							2638.278906	1841.441302	1734.69870	970.301474
							796.831604			796.831604
									1/2 = 398.415802	

面積計算書

工
区

Z

ブ
ロ
ック

13

計
算
者



測
算
者

備
考

水路

点	①	②	③	④	⑤	⑥	③	×	⑤	②	×	⑥
	X	X-(定数)	X _{n-1} -X _{n+1}	Y	Y-(定数)	Y _{n-1} -Y _{n+1}	+		-	+		-
Z1	-152,698.945	152.600 99.945	+ 43.782	36,700.218	36.300 0.218	+ 7.972			9.544476			788.789540
Z0	-152,744.230	100.230	+ 42.888	36,710.587	10.587	+ 11.872			454.055256			1712.298560
Z2	-152,741.833	141.833	- 43.782	36,312.090	12.090	- 7.972	529.324380			1130.692676		
Z3	-152,700.448	100.448	- 42.888	36,302.615	2.615	- 11.872	112.152120			1192.518656		
							641.476500		463.599732	2323.211332		1.088100
							177.876768					177.876768
									1/2 = 88.938384			
			全体	水路			Σ I	Σ II	Σ III	Σ IV		Σ R
							9603.72					(88.93 + 38.19 + 4.50 + 4.49 + 37.18) = 9630.43

面積計算書

工区

2

ブロック

13

計算者



精算者



備考

隅切 1.

点	①	②	③	④	⑤	⑥	③ ×	⑤	② ×	⑥
	X	X-(定数)	X _{n-1} -X _{n+1}	Y	Y-(定数)	Y _{n-1} -Y _{n+1}	+	-	+	-
I	-152,728.746	-152.727 1.746	+ 9.806	-36,129.320	-36.129 0.320	- 4.957		3,137,920	8,654,922	
1	-152,737.274	10.274	- 1.606	-36,131.278	2.278	+ 8.601	3,658,468			88,366,674
19	-152,727.140	0.140	- 9.806	-36,137.921	8.921	+ 4.957	87,479,326			0,673,980
(2) No. 47	-152,727.468	0.468	+ 1.606	-36,136.285	7.235	- 8.601		11,619,410	4,025,268	
							91,137,794	14,757,330	12,680,190	89,060,654
							76,380,464			76,380,464
								1/2 = 38,190,232		

面積計算書

工
区

Z

ブ
ロ
ック

13

計
算
者



精
算
者



備
考

隅切 Z

点	①	②	③	④	⑤	⑥	③	×	⑤	②	×	⑥	
	X	X-(定数)	X _{n-1} -X _{n+1}	Y	Y-(定数)	Y _{n-1} -Y _{n+1}	+	-	+	-			
II	-152,783.928	^{152,780} 3.928	+ 2.253	-36,141.990	^{36,140} 1.990	+ 3.595			4.483470			14.121160	
S	-152,783.257	3.257	- 2.924	-36,144.914	4.914	- 0.671	14.368536					2.185447	
Z	-152,781.004	1.004	+ 0.671	-36,141.319	1.319	- 2.924			0.885049			2.935696	
							14.368536		5.368519			5.121143	14.121160
							9.000017						9.000017
									$\frac{1}{2} = 45000085$				

面積計算書

工
区

2

ブ
ロ
ック

13

計
算
者



精
算
者



備
考

隅 3.

点	①	②	③	④	⑤	⑥	③	×	⑤	②	×	⑥
	X	X-(定数)	X _{n-1} -X _{n+1}	Y	Y-(定数)	Y _{n-1} -Y _{n+1}	+		-	+		-
Ⅳ	-152,744.757	^{152,740} 4.757	- 3.595	-36,312.760	^{36,300} 12.760	+ 2.254	45.872200					10.722278
12	-152,741.833	1.833	+ 0.671	-36,312.090	12.090	- 2.924			8.112390	5.359692		
11	-152,745.428	5.428	+ 2.924	-36,309.836	9.836	+ 0.670			28.760464			3.636760
							45.872200		36.872854	5.359692		14.359038
							8.999346					8.999346
									1/2 = 44.99673			

面積計算書

工区

2

ブロック

13

計算者



精算者



備考

陽田

点	①	②	③	④	⑤	⑥	③ ×	⑤	② ×	⑥
	X	X-(定数)	X _{n-1} -X _{n+1}	Y	Y-(定数)	Y _{n-1} -Y _{n+1}	+	-	+	-
IV	-152,691.919	^{+152,690} 1.919	- 7.964	-36,300.662	^{-36,290} 10.662	- 4.418	82,912.168		8,478.142	
ETC	692.482	2.482	+ 1.673	298.197	8.197	- 7.301		13,713.581	18,135.684	
No.5	693.592	3.592	+ 1.389	293.361	3.361	- 6.064		4,668.429	21,781.888	
14	693.873	3.873	+ 6.856	292.133	2.133	+ 9.254		14,623.818		35,840.742
13	700.448	10.448	- 1.954	302.615	12.615	+ 8.529	24,647.110			89,110.992
							109,561.878	33,005.858	48,395.714	124,951.734
							76,556.020			76,556.020
								1/2 = 38,278.010		

計年月日

計算者



検査者



B.NO. 心

各筆面積計算書

地番	算式	隅切	地積	摘要
福富	174-1		2691.77	
福富	176-3		2318.63	
福富	176-2		1090.59	
福富	176-6		301.51	
福富	422-1		393.67	
福富	421		156.33	
福富	420		501.14	
福富	422-2		1041.25	
福富	176-5		535.95	
福富	176-4		398.41	
水路			88.93	
隅切 I		38.19		
隅切 II		4.50		
隅切 III		4.47		
隅切 IV		38.27		
計			9603.63	
全体			9603.72	
		差	0.09	