

BLOCK NO. 6

街区計算

街区略図

工区

2

ブロック

6

記入者



点検者



W = 6.000

X = -162.844.021
Y = -36.153.707

X = -162.849.889
Y = -35.987.766



W = 6.000

9324.29

W = 6.000

X = -162.908.011
Y = -35.993.934

W = 6.000

X = -162.925.424
Y = -36.994.991

W = 6.000

面積計算書

工
区

2

ブロック

6

計算者



精算者



備考

点	①	②	③	④	⑤	⑥	③ × ⑤		② × ⑥		
	X	X-(定数)	X _{n-1} -X _{n+1}	Y	Y-(定数)	Y _{n-1} -Y _{n+1}	+	-	+	-	
I	-152 872.387	-152.800 72.387	+60.268	-25 991.384	-35.990 1.384	-153.492			83.410912	11110.825406	
II	907.687	107.687	+49.842	996.919	6.919	+6.418			244.855798	691.125166	
III	922.229	122.229	+3.306	997.802	7.802	+168.089			25.793412	20545.250781	
IV	910.993	110.993	-74.810	-26 165.008	175.008	+152.609	13092.348630 1927.562964			16938.530781	
V	847.419	67.419	-38.606	150.411	160.411	-173.624	6192.827066 5406.429209		8233.076456		
							19285.178546	454.061122	19342.909860	38175.016286	
							19831.16624			19831.16624	
							$X \frac{1}{2} = 9415.557218$				
取捨 I II IV V											
							9415.55			17.91	
									1408		
							9415.55 - (4.50 + 4.49 + 4.44 + 4.68) - 17.91				63.85
											= 9234.29

面地計算

画地略図

工区

2

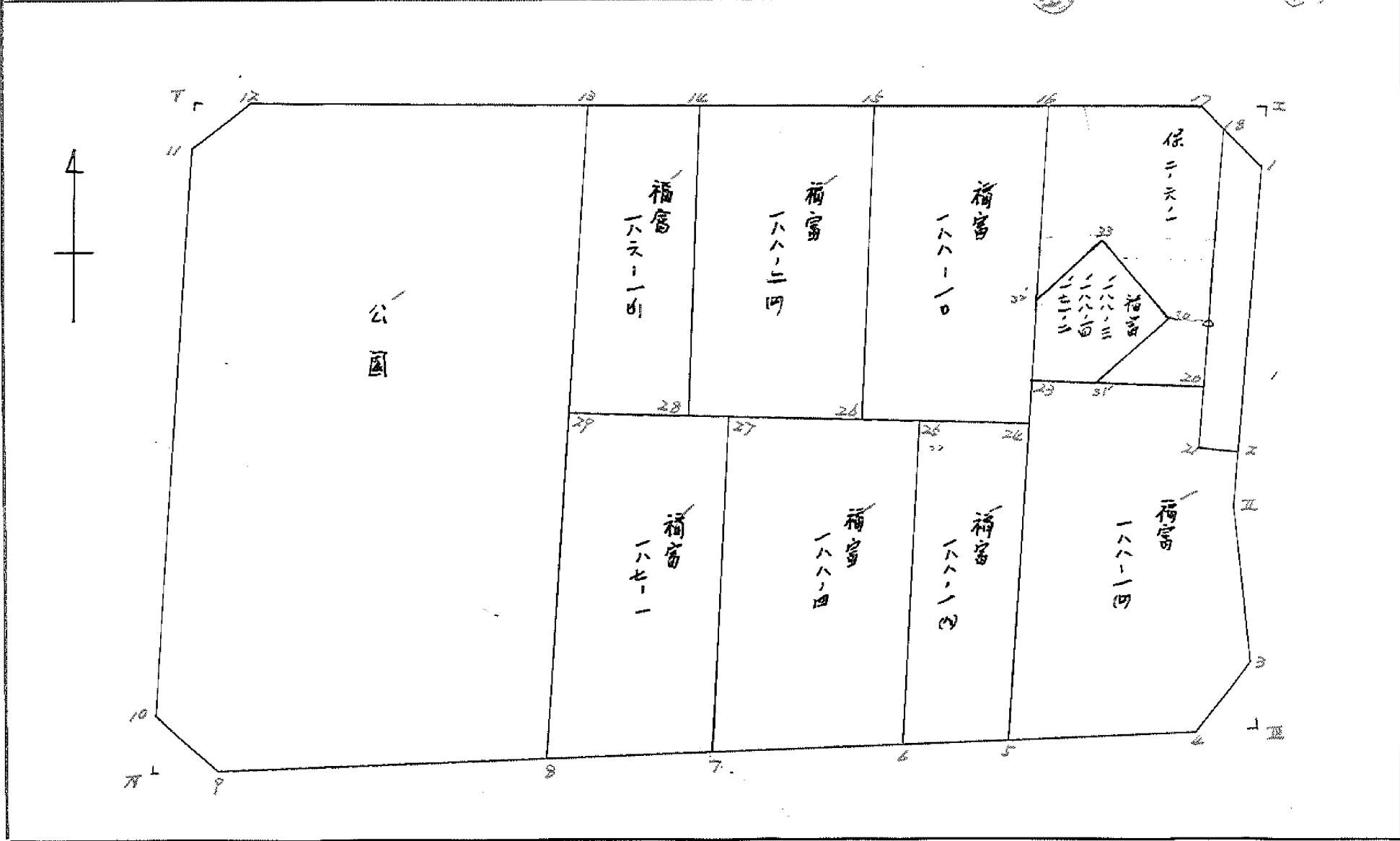
ブロック

6

記入者



点検者



面積計算書

工区

区

ブロック

6

計算者

精算者

備考

公園
水路

点	①	②	③	④	⑤	⑥	③	×	⑤	②	×	⑥
	X	X-(定数)	X _{n-1} -X _{n+1}	Y	Y-(定数)	Y _{n-1} -Y _{n+1}	+		-	+		-
11	-152,840.343	-152,840 10.343	-60.185	-36,151.082	21.082	-16.890	4879.920170			174.693270		
12	-152,847.884	7.884	+9.343	-36,147.447	27.447	-78.806		723.58732		621.306504		
13	-152,849.686	19.686	+68.740	-36,072.276	2.276	-66.236		156.452240		1303.921896		
8	-152,916.624	76.624	+41.508	-36,081.211	11.211	+89.739		577.456188				6876.161136
9	-152,911.194	71.194	-8.555	-36,162.015	92.015	+83.126	787.188325					5918.072444
10	-152,908.069	68.069	-60.851	-36,164.337	94.337	-10.933	5740.500787			744.198377		
								11407.609282	1457.495749	2844.120047		12794.233580
								9940.113433				9940.113433
										$\frac{1}{2} = 4975.0567665$		
1	-152,875.351	-152,870 5.351	+32.592	-35,991.849	1.849	+3.086				60.262608		16.513186
2	-152,905.657	35.657	+29.996	-35,996.601	6.601	+6.728				198.003596		239.900296
21	-152,905.347	35.347	-32.592	-35,998.577	8.577	-3.086	279.541584			109.080842		
18	-152,873.065	3.065	-29.996	-35,993.515	3.515	-6.728	105.435940			20.621320		
								384.977524	258.266204	129.702162		256.413482
								126.711320				126.711320
										$\frac{1}{2} = 63.355660$		

面積計算書

工区

2

ブロック

6

計算者



精算者



備考

附記

IV

点	①	②	③	④	⑤	⑥	③	⑤	②	⑥
	X	X-(定数)	X _{n-1} -X _{n+1}	Y	Y-(定数)	Y _{n-1} -Y _{n+1}	+	-	+	-
	-152	-152.908		-36	-36.162					
9	911.194 ✓	2.194 ✓	+2.924	162.015 ✓	0.015 ✓	+0.671		0.043860		2.143174
7	910.993 ✓	2.993 ✓	-3.125	165.008 ✓	3.008 ✓	+2.322	9.600000			6.949746
10	908.069 ✓	0.069 ✓	+0.201	166.837 ✓	2.337 ✓	-2.993		0.469737	0.206517	
							9.600000	0.513597	0.206517	9.092920
							8.886603 ✓			8.886603 ✓
							× 1/2 = 4.4432015 ✓			
	-152	-152.907		-36	-36.147					
11	850.343 ✓	3.343 ✓	-0.465	154.082 ✓	4.082 ✓	+2.964	1.898130			9.908652
7	847.419 ✓	0.419 ✓	-2.459	150.411 ✓	3.411 ✓	-3.635	8.387649		1.523065	
12	847.884 ✓	0.884 ✓	+2.924	147.447 ✓	0.447 ✓	+0.671		1.307028		0.593164
							10.285779	1.307028	1.523065	10.501816
							8.978751 ✓			8.978751 ✓
							× 1/2 = 4.4893755 ✓			

面積計算書

工区 2 ブロック 1 計測者 精算者 備考 加工 III

点	①	②	③	④	⑤	⑥	③ × ⑤	② × ⑥
	X	X-(定数)	X _{n-1} -X _{n+1}	Y	Y-(定数)	Y _{n-1} -Y _{n+1}	+	-
I	⁻¹⁵² 872.387	^{-152.871} 1.387	+2.429	⁻³⁶ 991.284	^{-25.991} 0.284	-2.499		1.216736
1	875.351	4.351	-0.465	991.849	0.849	+2.964	0.394785	12.896364
17	871.922	0.922	-2.964	994.349	3.348	-0.465	9.923472	0.428730
							10.318257	1.216736
							9.001521	3.394843
								12.896364
								9.001521
								× 1/2 = 4.5007605
3	⁻¹⁵² 919.235	^{-152.919} 0.235	+0.201	⁻³⁵ 997.620	^{-25.997} 0.620	-2.993		0.124600
III	922.229	3.229	+2.993	997.802	0.802	+3.175	2.239986	10.252075
4	922.028	3.028	-2.994	⁻³⁶ 999.795	3.795	-0.182	11.362230	0.551096
							11.362230	2.264806
								1.254451
								10.252075
							8.997624	3.997624
								× 1/2 = 4.498812

面積計算書

工区

2

ブロック

6

計算者



精算者



備考

福富 188-10

福富 188-10(ハ)

点	①	②	③	④	⑤	⑥	③ ×	⑤	② ×	⑥
	X	X-(定数)	X _{n-1} -X _{n-2}	Y	Y-(定数)	Y _{n-1} -Y _{n-2}	+	-	+	-
15	-152,866.059	-152,860 6.059	-22.400	-36,031.687	-36,010 21.687	-25.067	485.788800		151,880953	
16	-152,869.363	9.363	+28.992	-36,010.647	0.647	-17.012		18.757824	159,283356	
24	-152,895.051	35.051	+22.400	-36,014.675	4.675	+25.067		102.720000		878.62347
26	-152,891.763	31.763	-28.992	-36,035.714	25.714	+17.012	745.500288			540.332156
							1231.289088	123.277824	311.164309	1418.979573
										1107.811264
										1/2 = 553.905632
5	-152,920.824	-152,890 30.824	+25.032	-36,018.716	-36,010 8.716	+15.056		218.178912		464.086144
6	-152,920.083	30.083	-27.472	-36,029.731	19.731	+6.827	542.050032			205.376641
25	-152,893.352	3.352	-25.032	-36,025.443	15.443	-15.056	389.072376		50.467712	
24	-152,895.051	5.051	+27.472	-36,014.675	4.675	-6.827		128.431600	34.483177	
							931.122468	346.610512	84.950889	669.462785
							584.511896			584.511896
							1/2 = 292.255948			

面積計算書

工区

2

ブロック

6

計算者

精算者

備考 福富 186-19
福富 187-1

点	① X	② X-(定数) -152,250	③ X _{n-1} -X _{n+1}	④ Y	⑤ Y-(定数) -36,060	⑥ Y _{n-1} -Y _{n+1}	③ ×	⑤ -	② ×	⑥ -
13	-152,259.626	9.626	-23.880	-36,072.276	12.276	-15.822	293.150880		153.251892	
14	-152,261.537	11.537	+27.572	-36,060.492	0.492	-7.742		13.565424	89.319454	
28	-152,287.258	27.258	+23.880	-36,064.534	4.534	+15.822		108.271920		589.496076
29	-152,285.417	35.417	-27.572	-36,076.314	16.314	+7.742	449.809608			274.198414
							742.960488	121.887344	242.571346	863.694490
							621.123144			621.123144
								1/2 = 310.561572		
7	-152,917.930	37.930	+28.213	-36,061.782	11.782	+24.051		332.405566		912.254430
8	-152,916.624	36.624	-32.513	-36,081.211	31.211	+14.532	1014.763243			532.219968
29	-152,885.417	5.417	-28.213	-36,076.314	26.314	-24.051	742.396882		130.284267	
27	-152,888.411	8.411	+32.513	-36,057.160	7.160	-14.532		232.793080	222.228652	
							1757.160125	565.198646	252.512919	1444.474398
							1191.961479			1191.961479
								1/2 = 595.9807395		

面積計算書

工区

乙

ブロック

6

計算者

精算者



備考

福

128-31

128-14

171-21

点	①	②	③	④	⑤	⑥	③ × ⑤		② × ⑥	
	X	X-(定数)	X _{n-1} -X _{n+1}	Y	Y-(定数)	Y _{n-1} -Y _{n+1}	+	-	+	-
30	-142,887.960	-142,870 17.960	+ 13.049	-36,000.582	-36,000 2.582	+ 2.051		7.472812		144.594960
31'	-142,891.478	21.478	+ 3.142	-36,011.666	11.666	+ 13.468		36.654472		289.264704
23	-142,891.102	21.102	- 10.224	-36,014.056	14.056	+ 0.846	143.702444			17.842292
32'	-142,891.254	11.254	- 12.673	-36,017.512	17.512	- 10.441	158.564476		117.503014	
33	-142,878.429	2.429	+ 6.706	-36,003.615	3.615	- 11.924		24.242190	100.527386	
							302.273120	68.569574	218.010410	451.713946
							233.703546			233.703546
									1/2 = 116.851773	

面積計算書

工
区

ス

ブ
ロ
ック

6

計
算
者

精
算
者

備
考

保ス-6-1

点	① X	② X-(定数)	③ X _{n-1} -X _{n+1}	④ Y	⑤ Y-(定数)	⑥ Y _{n-1} -Y _{n+1}	③ ×	⑤	② ×	⑥
							+	-	+	-
16	142,869.363	-142,866 9.363	-9.337	-36,010.647	-24,990 20.647	-18.164	172,177.804		170,069.432	
17	142,871.922	11.922	+3.702	-35,994.348	4,348	-17.132		16,096.296	204,247.704	
18	142,873.065	13.065	+21.899	-35,993.515	3,515	+2.427		76,974.985		31,643.430
20	142,893.821	33.821	+18.413	-35,996.770	6.770	+18.151		124,646.010		613,284.971
31'	142,891.478	31.478	-5.861	-36,011.666	21.666	+3.818	126,984.426			120,182.004
30	142,887.960	27.960	-13.049	-36,000.588	10,588	-8.051	138,162.812		225,124.960	
33	142,878.429	18.429	-6.706	-36,003.615	13,615	+11.924	91,302.190			219,747.396
32'	142,881.254	21.254	-9.066	-36,012.512	22,512	+7.037	204,093.792			149,458.128
							753,221.024	217,727.291	599,423.196	1,134,916.929
							525,493.733			525,493.733
									1/2 = 267.7468665	

面積計算書

工区

ニ

ブロック

6

計算者

精算者

備考

福富 198-10

点	①	②	③	④	⑤	⑥	③	×	⑤	②	×	⑥
	X	X-(定数)	X _{n-1} -X _{n+1}	Y	Y-(定数)	Y _{n-1} -Y _{n+1}	+	-	+	-	+	-
		-152,890			-35,990							
21	-152,905.657	15.657	+ 2.340	-35,996.601	6.601	- 1.658			15,446340	25,959306		
22	-152,907.687	17.687	+ 13.578	-35,996.919	6.919	+ 1.019			93,946182			18,023053
3	-152,919.235	29.235	+ 14.341	-35,997.620	7.620	+ 3.876			109,278420			113,314860
4	-152,922.028	32.028	+ 1.589	-36,000.795	10.795	+ 21.096			17,153255			675,662688
5	-152,920.824	30.824	- 30.926	-36,018.716	28.716	+ 13.261	888,071016					408,757064
23	-152,891.102	1.102	- 27.003	-36,014.056	26.056	- 21.946	649,584168			24,184492		
20	-152,893.821	3.821	+ 14.245	-35,996.790	6.790	- 15.479			96,438650	59,145259		
21	-152,905.347	15.347	+ 11.836	-35,998.577	8.577	- 0.169			101,517372	2,593643		
							1537,655184	433,780219	111,882700	1215,757665		
							1103,874965			1103,874965		
							1/2 = 551,9374825					

座標法面積計算 (188-1 00)

測点	X	Δx	Y	Δy	(+) F_1	(-) F_2
					$\Delta x \cdot \Delta y$	$\Delta x \cdot \Delta y$
A	-899.006		(-900)			
		-2.719	-1015.295	-213.304		579.973576
B	-901.725		-998.009			
		-3.622		-196.586		712.034692
21	-905.347		-998.577			
		-0.910		-195.178		60.505180
2	-905.657		-996.601			
		-2.030		-193.520		392.845600
II	-907.687		-996.919			
		-11.548		-194.539		2246.536372
3	-919.235		-997.620			
		-2.793		-198.415		554.173095
4	-922.028		-1000.795			
		+1.204		-219.511	264.291244	
5	-920.824		-1018.716			
		+21.818		-234.011	5105.651998	
A	-899.006		-1015.295			
		-		-		
		-		-		
		-		-		
		-		-		
				$\bar{Z} =$	5369.943242	4546.068315
				$F = (F_1) \sim (F_2) =$		823.874927
計算者				$F / 2 =$		411.937466
点検者				$\times 0.3025 =$		

座標法面積計算 (188-17)

測点	X	Δx	Y	Δy	(+) F ₁	(-) F ₂
					$\Delta x \cdot \Delta y$	$\Delta x \cdot \Delta y$
			(-900)			
23	-891.102		-1014.056			
		-2.719		-210.826		573.295894
20	-893.821		-996.770			
		-7.904		-194.779		1539.533216
B	-901.725		-998.009			
		+2.719		-213.304	579.973576	
A	-899.006		-1015.295			
		+7.904		-229.351	1812.790304	
23	-891.102		-1014.056			
				$\bar{z} =$	2992.763880	2112.769110
				F = (F ₁) ~ (F ₂) =		279.994770
計算者				F / 2 =		139.997385
点検者				× 0.3025 =		

南 嶺 計 算

Z

L

秋岡 範 充

地
番
七
壹
A
P
C
石

-152 K	891.102	7.460	-36 K	014.056	4.064	104.8577	3621.4385	3621.4385		
	891.546	-9.026		011.231	5.894	101.3710		5254.7721		
	900.128	-7.460		008.162	-4.064	60.8885		3658.1201		
	899.006	9.026		015.295	-5.894			138.0526		
							<hr/>			
							162.2595	242.9103	8956.8614	8876.2106
							80.6508	80.6508		
							40.3254	40.3254		

秋圖縮充

Z

L

卷20
八B
八番地
卷八

C - 152K 891.546 6.307 - 36K
 893.821 - 10.179 - 35K
 901.725 - 6.307 - 35K
 900.128 10.179 - 36K

011.231 11.392
 966.770 13.222 10146.1218
 998.009 - 11.392 6294.4427
 008.16Z - 13.222

6377.8339

10156.4922

11818.1012

10272.4512

10262.0809 11901.4924

16440.5645

22173.9436

16639.9148

21974.593

199.3503 199.3504

99.67515 99.6752

面積計算書

工区

2

ブロック

6

計算者

計算者

備考

福富 188-2(A)
福富 188-6

点	① X	② X-(定数)	③ X _{n-1} -X _{n+1}	④ Y	⑤ Y-(定数)	⑥ Y _{n-1} -Y _{n+1}	③ ×	⑤	② ×	⑥
							+	-	+	-
14	-152,861.437	-152,860 1.437	-21.199	-36,060.492	-36,030 30.492	-32.847	646.399908		50.485839	
15	-152,866.049	6.049	+30.226	-36,031.687	1.687	-24.778		50.991262	150.129902	
26	-152,891.763	31.763	+21.199	-36,035.714	5.714	+32.847		121.131086		1043.319261
28	-152,887.248	27.248	-30.226	-36,064.534	34.434	+24.778	1043.824684			675.398724
							1690.224592	172.122348	200.615741	1718.717985
							1518.102244			1518.102244
							V ₂ = 759.051122			
6	-152,920.083	-152,880 40.083	+24.478	-36,029.731	-36,020 9.731	+36.239		239.168518		1452.567837
7	-152,917.930	37.930	-31.672	-36,061.782	41.782	+27.429	1323.319504			1040.381970
27	-152,888.411	2.411	-24.478	-36,047.160	37.160	-36.239	913.318480		304.806229	
25	-152,893.342	13.342	+31.672	-36,024.542	5.442	-27.429	175.557896		366.232008	
							2236.637984	444.726414	671.038237	2492.949807
							1821.911570			1821.911570
							V ₂ = 910.955785			

計年
月
算日

計
算
者

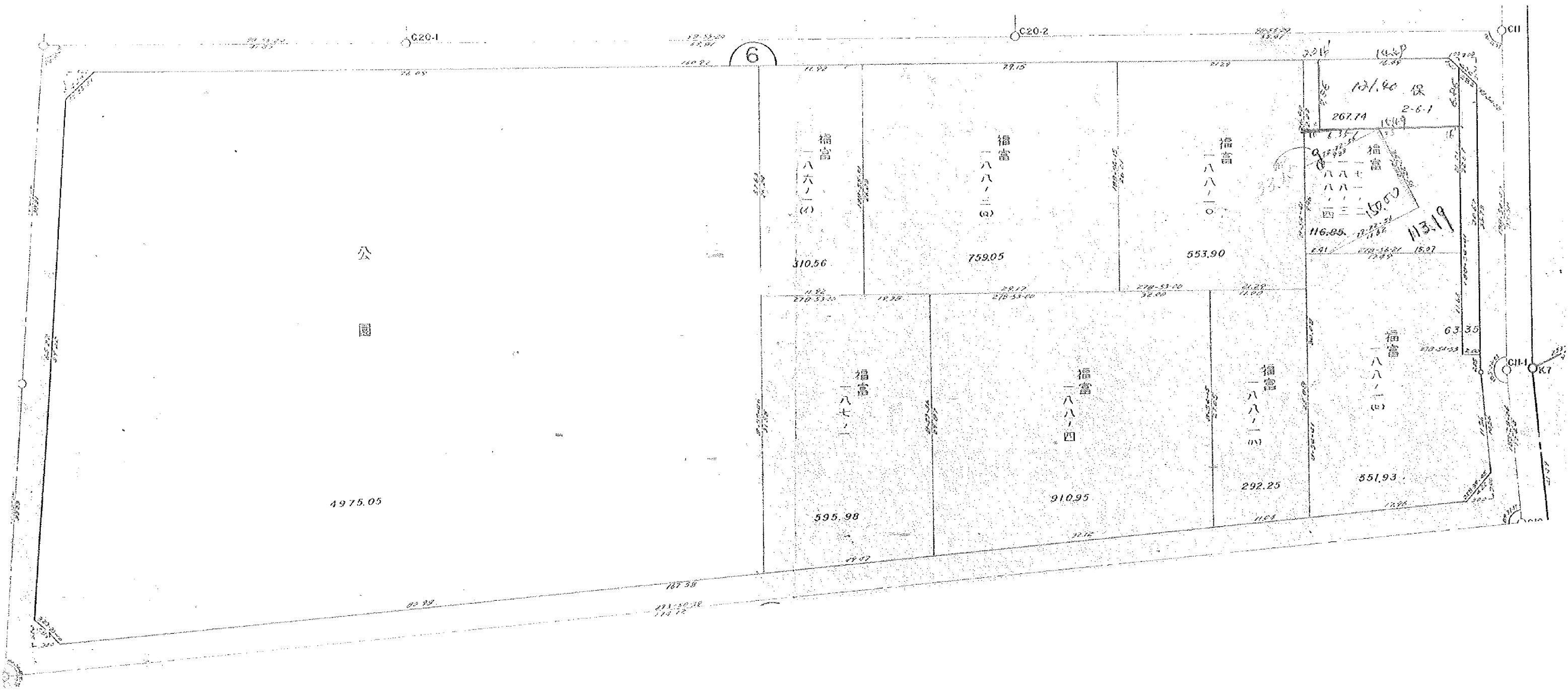
檢
査
者



B.NO. 6

各筆面積計算書

地番	算式	隅切	積	摘要
	福富 18803- 1880161 171021		116.85	
	福富 188010		553.90	
	福富 1880143		292.25	
	福富 1860143		310.46	
	福富 18701		495.98	
	福富 18801(10)		551.93	
	福富 18802(10)		759.05	
	福富 18804		910.95	
	保 20601		267.74	
	公口		4975.05	
	北路		63.35	
	隅切I	4.50		
	隅切II	4.49		
	隅切III	4.44		
	隅切IV	4.48		
	合計		9415.52	
	全体		9415.55	
	差		0.03	



公園

4975.05

6

福富
一八六ノ(イ)

310.56

福富
一八八ノ(ロ)

759.05

福富
一八八ノ(ハ)

553.90

福富
一八七ノ(ニ)

595.98

福富
一八八ノ(ホ)

910.95

福富
一八八ノ(ヘ)

292.25

福富
一八八ノ(ニ)

551.93

121.40 12
267.74 2-6-1
150.00
113.19

C20-1

C20-2

CII

CII-1

R.7

面積計算書

工区

Z

ブロック

6

計算者



結算者

備考

保留地

点	①	②	③	④	⑤	⑥	③ × ⑤		② × ⑥		
	X	X-(定数)	X _{n-1} -X _{n+1}	Y	Y-(定数)	Y _{n-1} -Y _{n+1}	+	-	+	-	
16	-152.869.363	-152.870	- 11.581	-36.010.647	-36.000	- 3.841	123.302907			266.423283	
16'	-152.869.673		+ 8.081	-36.008.671		- 0.758		70.070251	52.812134		
16''	-152.877.444		+ 8.756	-36.009.889		- 5.056		86.588084	391.556864		
33	-152.878.429		+ 3.810	-36.003.615		+ 2.623		13.773150		205.719267	
32'	-152.881.254		- 9.066	-36.012.512		+ 7.032	113.433792			571.378128	
							236.736699	170.431585	710.792281	777.097395	
							66305114		66305114		
							<u>S' =</u>	<u>33</u>	<u>152557</u>	<u>m²</u>	

面積計算書

工区

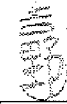
2

ブロック

6

計算者

精算者



備考

保 2-6-1

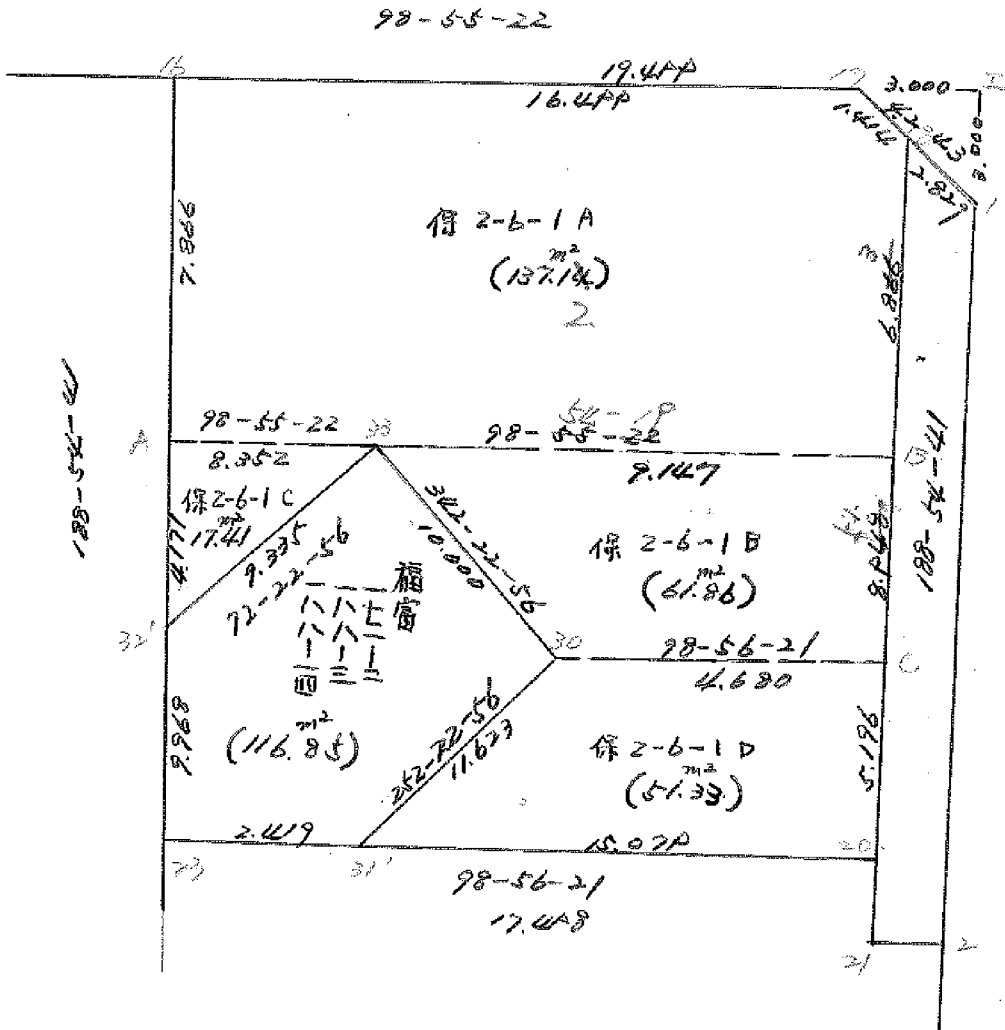
点	①	②	③	④	⑤	⑥	⑦	⑧	⑨	⑩	⑪
	X	X-(定数)	X _{n-1} -X _{n+1}	Y	Y-(定数)	Y _{n-1} -Y _{n+1}	+	×	-	+	-
17	152.871.722	-150.880.000 -11.722	+ 3.392	35.994.348	-35.990.000 -4.348	- 15.156			14748416	150.629832	
18	152.873.065	-13.065	+ 7.226	35.993.515	-3.515	+ 0.231			27259290		3.018015
16'''	152.8799421	-19.848	+ 4.379	35.994.579	-4.579	+ 14.374			20.051441		324991152
16''	152.877444	-17.444	+ 10.175	36.009.809	-19.809	+ 14.092	207.370575				245.820848 150.280992
16'	152.869.673	-9.673	- 5.522	36.008.671	-18.671	- 15.541	103.101262			150.328093	472.227256
							305.471837		62.659747	331.017925	573.830015 478.317260
							242.812090				242.812090
									Σ = 121.406045		

BNo.6 保2-6-1の分割計算書

$$S = 267.74 \text{ m}^2$$



5.50.7.2/



面積計算書

工区

Z

ブロック

6

計算者



監督者

備考

保 2-6-1 A
保 2-6-1 C

点	①	②	③	④	⑤	⑥	③ × ⑤		② × ⑥	
	X	X-(定数)	X _{n-1} -X _{n+1}	Y	Y-(定数)	Y _{n-1} -Y _{n+1}	+	-	+	-
18	878.065	13.065	+7.926	993.515	3.515	+0.231				3.018015
B	879.848	19.848	+4.069	994.579	4.579	+18.350				364.210800
A	877.134	17.134	-10.485	991.865	1.865	+16.068	229.254525			275.309112
16	869.363	9.363	-5.212	990.647	0.647	-17.517	107.612164			164.011671
17	871.922	11.922	+3.702	994.368	4.368	-17.132				
							336.866689	62.588127	368.259375	642.537927
							274.278552			274.278552
							$\times \frac{1}{2} = 137.139276 = 137.14$			
23	878.429	8.429	+4.120	993.615	3.615	+0.647				5.453563
32'	881.254	11.254	-1.295	992.512	12.512	+8.250	16.203060			92.845500
A	877.134	7.134	-2.825	991.865	11.865	-8.897	33.518625			63.471198
							497.4665	14.893800	63.471198	78.299063
							34.827865			34.827865
							$\times \frac{1}{2} = 17.4139325 = 17.41$			

面積計算書

工区

2

ブロック

6

計算者



精算者

備考

保 2-6-1 B
保 2-6-1 P

点	①	②	③	④	⑤	⑥	③ × ⑤		② × ⑥	
	X	X-(定数)	X _{n-1} -X _{n+1}	Y	Y-(定数)	Y _{n-1} -Y _{n+1}	+	-	+	-
B	879.848	9.848	+10.258	994.579	4.579	-7.650			46.771382	75.337200
C	888.687	18.687	+8.112	995.965	5.965	+6.000			48.388080	112.290183
20	887.960	17.960	-10.258	000.588	10.588	+7.650			108.611704	137.394000
23	878.429	8.429	-8.112	003.615	13.615	-6.000			110.444880	50.649861
									279.056594	249.684183
									95.357467	125.997061
									123.697122	122.497122
									$\times \frac{1}{2} = 61.848561 = 61.85$	
C	888.687	8.687	+5.861	995.965	5.965	-3.818			34.960865	33.166966
20	893.821	13.821	+2.791	996.770	6.770	+15.701			18.895070	27.003521
31'	891.478	11.478	-5.861	011.666	21.666	+3.818			126.984426	43.823004
30	887.960	7.960	-2.791	000.588	10.588	-15.701			29.551108	124.977960
									156.535534	260.826525
									63.855935	159.146926
									102.679590	102.679590
									$\times \frac{1}{2} = 51.339795 = 51.33$	

面積計算書

工区

2

ブロック

6

計算者



精算者

備考

保2-6-1 A

保2-6-1 B

点	①	②	③	④	⑤	⑥	③ × ⑤		② × ⑥	
	X	X-(定数)	X _{n-1} -X _{n+1}	Y	Y-(定数)	Y _{n-1} -Y _{n+1}	+	-	+	-
16	⁻¹⁵² 869.363	^{-152,860.} 9.363	- 5.212	^{-36,} 010.647	^{-35,990} 20.647	- 17.517	107.612164		164.011671	
17	871.922	11.922	+ 3.702	^{-35,} 994.348	4.348	- 17.132		16.086296	204.247704	
18	873.065	13.065	+ 7.923	993.515	3.515	+ 0.230		27.849345		3.004750
B	879.845	19.845	+ 5.364	994.578	4.578	+ 10.100		24.556392		200.434500
33	878.429	18.429	- 2.711	^{-36,} 003.615	13.615	+ 17.287	36.910265			318,582123
A	877.134	17.134	- 9.066	011.865	21.865	+ 7.032	198.228090			120.486288
							342.750519	68.502033	368.259375	442.507861
							274.248486			274.248486
										72 = 137.124243
33	^{-152,} 878.429	^{-152,870} 8.429	- 8.115	^{-36,} 003.615	^{-35,990} 13.615	- 6.010	110.425725		50.658290	
B	879.845	9.845	+ 10.258	^{-35,} 994.578	4.578	- 7.650		46.961124	95.314250	
C	888.687	18.687	+ 8.115	995.965	5.965	+ 6.010		48.405975		112.308870
30	887.960	17.960	- 10.258	^{-36,} 000.588	10.588	+ 7.650	108.611704			127.394000
							219.097429	95.367099	125.972540	249.702870
							123.730330			123.730330
										72 = 61.865165