

BLOCK NO. 7-3

街区計算

街区略図

工区

2

ブロック

7-3

記入者

点検者

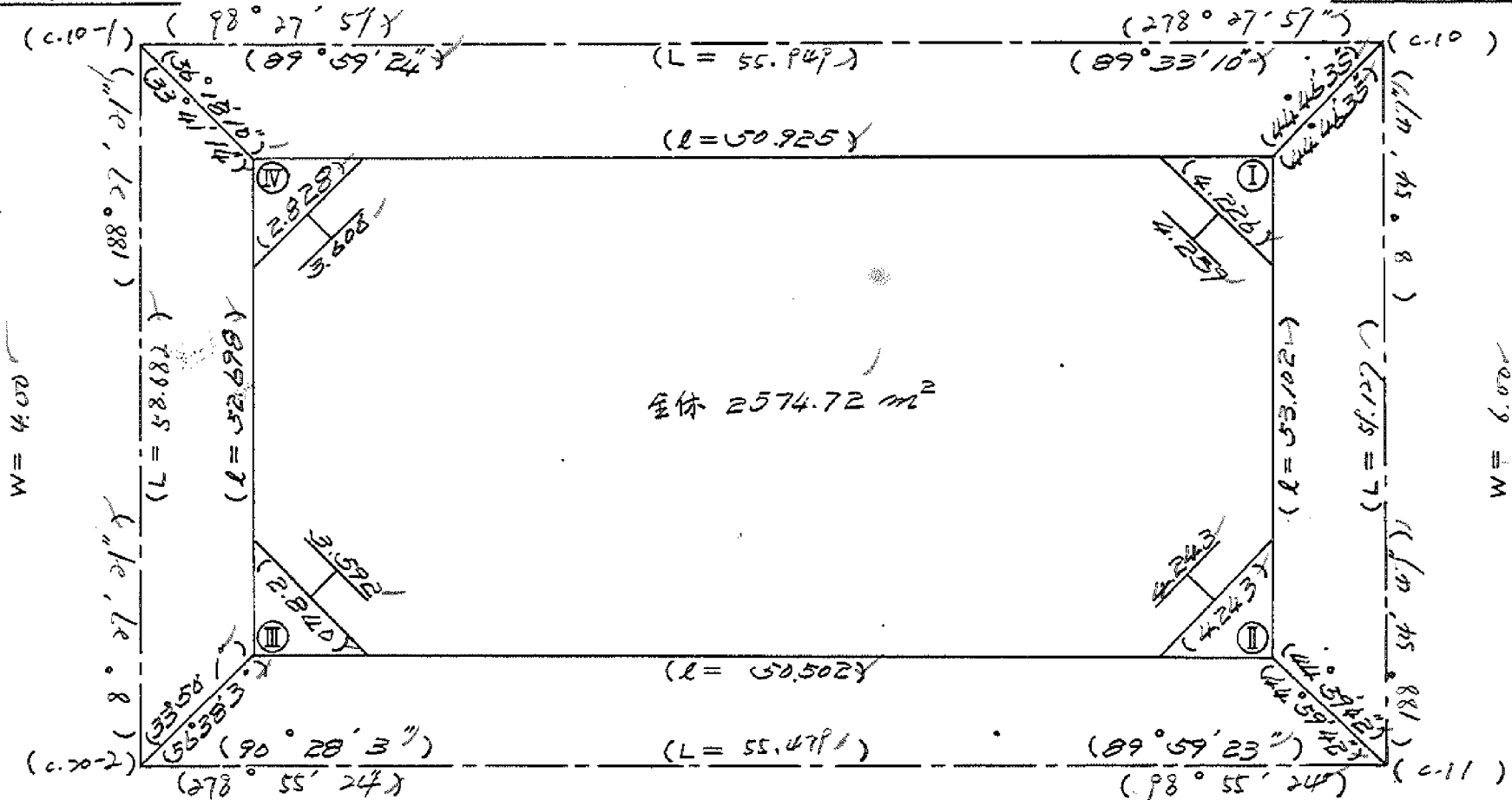
$X = -152,803.240$

$Y = -36,034.134$

$W = 6.00$

$X = -152,811.477$

$Y = -35,978.795$



$X = -152,861.284$

$Y = -36,042.763$

$W = 6.00$

$X = -152,869.889$

$Y = -35,987.956$

面積計算書

工区

2

ブロック

7-3

計算者



精算者



備考

全体

点	①	②	③	④	⑤	⑥	③ ×	⑤	② ×	⑥	
	X	X-(定数)	X _{n-1} -X _{n+1}	Y	Y-(定数)	Y _{n-1} -Y _{n+1}	+	-	+	-	
I	-152. 813.999	152800 13.999+	59.958	-35 982.227	35900 82.227-	42.142			4930.166466	589.945858	
II	866.460	66.460+	44.628	990.455	90.455+	58.119			4036.825740		3852.588740
III	858.627	58.627-	59.958	-36 040.346	140.346+	42.142	8044.815468				2470.659034
IV	806.502	6.502-	44.628	032.597	132.597-	58.119	5917.538916		377.889738		
							14332.464384	8916.992206	917.835596	6332.247774	
							5315.412178			5315.412178	
									1/2 = 26827.6089		
				I	II	III	IV	*1/2			
				2682.70 -	(4.49 + 4.50 + 1.99	+ 1.99 +	95.01) =	2574.72			
					15.7%						

圖地計算

画地略図

工区

2

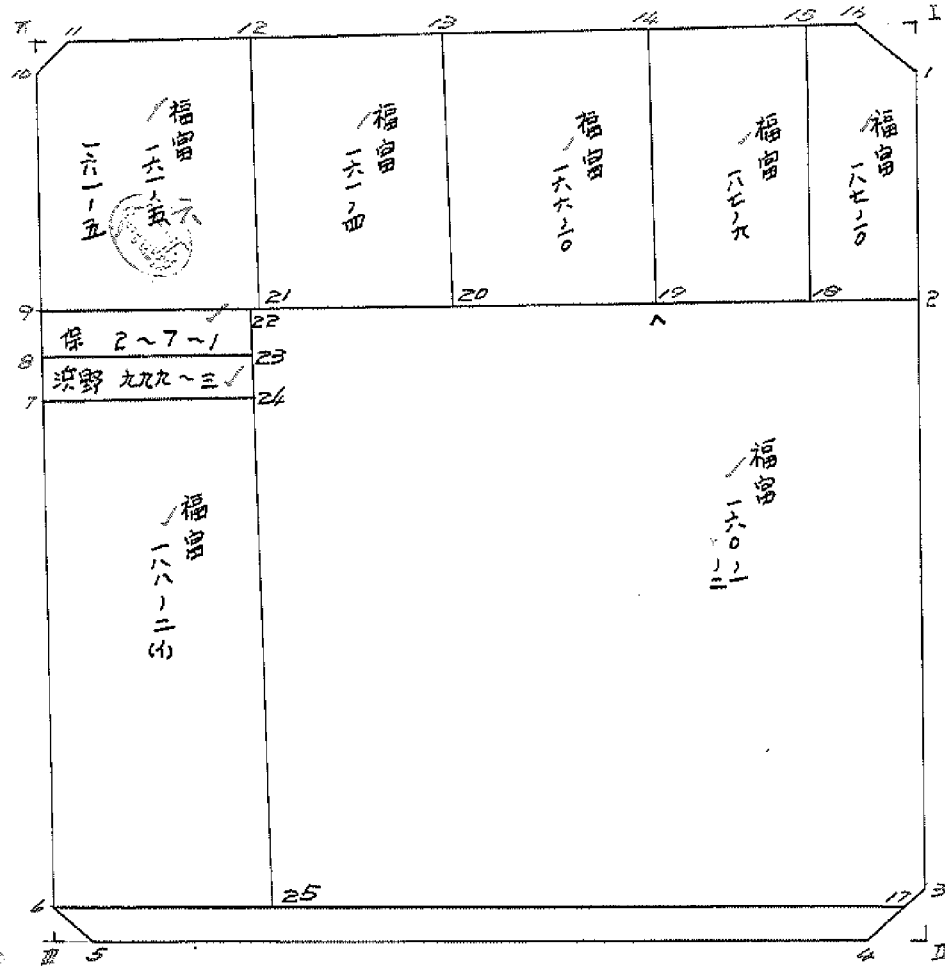
ブロック

7~3

記入者



点検者



面積計算書

工区 2

ブロック

7-3

計算者



精算者



備考

福島

187-10

"

160-2

点	①	②	③	④	⑤	⑥	③	⑤	②	⑥
	X	X-(定数)	X _{n-1} -X _{n+1}	Y	Y-(定数)	Y _{n-1} -Y _{n+1}	+	-	+	-
1	-152, 816.863	-152.810 6.963	+16.342	-35, 882.682	-35.980 2.692	-0.473		43.992664	3.293499	
2	828.889	19.899	+11.844	884.721	4.721	+9.198		35.915524		183.031002
18	828.807	18.807	-16.987	881.880	11.890	+4.807	201.975430			90.405249
15	812.812	2.912	-15.250	881.528	9.528	-6.696	145.302000		19.498752	
16	813.557	3.557	+4.051	885.184	5.184	-6.836		21.040894	24.313652	
							347.277430	120.949082	47.107903	273.436251
							226.328348			226.328348
							1/2 = 113.164174			
2	-152, 828.889	-152.820 9.899	+35.894	-35, 884.721	-35.980 4.721	-9.802		169.455574	97.029998	
3	863.486	43.486	+34.430	888.880	9.880	+6.413		343.955700		278.939848
17	864.329	44.329	-4.954	881.134	11.134	+38.000	55.157836			1686.502000
25	858.542	38.542	-40.180	-36, 887.880	47.990	+31.756	1928.238200			1223.939752
22	824.149	4.149	-30.940	882.880	42.880	-28.198	1327.016600		116.993502	
18	827.602	7.602	+5.750	-35, 888.782	19.792	-38.169		113.804000	290.160738	
							3310.412636	627.215274	504.184238	3187.381600
							2683.197362			2683.197362

分筆後の座標なし

株式会社

1/2 = 134.598681

面積計算書

工区

2

ブロック

7-3

計算者



計算者



備考

補遺

187-9

点	①	②	③	④	⑤	⑥	③	×	⑤	②	×	⑥
	X	X-(定数)	X _{n-1} -X _{n+1}	Y	Y-(定数)	Y _{n-1} -Y _{n+1}	+	-	+	-		
14	-152, 811.737 ✓	-152.810 1.737 ✓	-14.690	-35, 997.426 ✓	-35.980 17.426 ✓	-10.264	255.987940			17.828568		
15	812.912 ✓	2.912 ✓	+17.070	989.528 ✓	9.528 ✓	-5.536		162.642960		16.120832		
18	828.807 ✓	18.807 ✓	+14.690	991.290 ✓	11.890 ✓	+10.264		174.664100				193.035048
19	827.602 ✓	17.602 ✓	-17.070	999.792 ✓	19.792 ✓	+5.536	337.849440					97.444672
							593.837380	337.307060	33.949600			290.479720
							256.530320 ✓					256.530320 ✓
							1/2 = 128.265160 ✓					

面積計算書

工区

2

ブロック

7-3

計算者



精算者



備考

福富

161-4

166-10

点	①	②	③	④	⑤	⑥	③ × ⑤		② × ⑥	
	X	X-(定数)	X _{n-1} -X _{n+1}	Y	Y-(定数)	Y _{n-1} -Y _{n+1}	+	-	+	-
12	-152, 808.387✓	-152.800 8.387✓	-14.142	-36, 019.932✓	-36.000 19.932✓	-13.850	281.878344		116.159750...	
13	810.096✓	10.096✓	+17.568	008.447✓	8.447✓	-9.122		148.396896	92.095712	
20	825.955✓	25.955✓	+14.142	010.810✓	10.810✓	+13.850		152.875020	50.177212	359.476750
21	824.238✓	24.238✓	-17.568	022.287✓	22.297✓	+9.122	391.713696		211.177216	221.09836
							673.592040	301.271916	208.255632	580.575786
							372.320124✓			372.320124✓
							1/2 = 186.160062✓			
13	-152, 810.096✓	-152.810 0.096✓	-14.218	-36, 008.447✓	-35.990 18.447✓	-13.384	252.279446		1.284864	
14	811.737✓	1.737✓	+17.506	-35, 997.426✓	7.426✓	-8.655		129.999556	15.033735	
19	827.602✓	17.602✓	+14.218	999.792✓	9.792✓	+13.384		139.222656		235.585168
20	825.955✓	15.955✓	-17.506	-36, 010.810✓	20.810✓	+8.655	364.299860			138.090525
							626.579306	269.222212	16.318599	373.675693
							357.357094✓			357.357094✓
							1/2 = 178.678547✓			

面積計算書

工区 2

ブロック

7-3

計算者



精算者



備考

(保) 2-7-1
福富 161-6, 161-5

点	①	②	③	④	⑤	⑥	③ ×	⑤	② ×	⑥	
	X	X-(定数)	X _{n-1} -X _{n+1}	Y	Y-(定数)	Y _{n-1} -Y _{n+1}	+	-	+	-	
8	-152, 824.957✓	-152.820 4.957✓	-4.414	-36, 035.340✓	-36.020 15.340✓	+11.675	67.710760			57.872975	
9	822.346✓	2.346✓	-0.808	034.952✓	14.952✓	-12.450	12.081216		29.207700		
22	824.149✓	4.149✓	+4.414	022.890✓	2.890✓	-11.675		12.756460	48.439575		
23	826.760✓	6.760✓	+0.808	023.277✓	3.277✓	+12.450		2.647816		84.162000	
								79.797976	15.404276	77.647275	142.034975
								64.387700✓			64.387700✓
								1/2 = 32.193850✓			
9	-152, 822.346✓	-152.800 22.346✓	-15.758	-36, 034.952✓	-36.000 34.952✓	+10.594	550.773616			236.733524	
10	808.480✓	8.480✓	-15.550	032.891✓	32.891✓	-4.333	511.455050		36.743840		
11	806.796✓	6.796✓	-0.093	030.619✓	30.619✓	-12.959	2.847567		88.069364		
12	808.387✓	8.387✓	+17.442	019.932✓	19.932✓	-8.322		347.653944	69.796614		
21	824.238✓	24.238✓	+13.959	022.297✓	22.297✓	+15.020		311.243823		364.054760	
								1065.576233	658.897767	194.609818	600.788284
								406.178466✓			406.178466✓
								1/2 = 203.089233✓			

分筆後の座標なし

面積計算書

工区 2
 ブロック 7-3
 計算者 
 精算者 
 備考 福留 漢野 (88-2(1))
 PPP-3

点	①	②	③	④	⑤	⑥	③ × ⑤	② × ⑥
	X	X-(定数)	X _{n-1} -X _{n+1}	Y	Y-(定数)	Y _{n-1} -Y _{n+1}	+ -	+ -
25	-152, 858.542	-152.820 38.562	+27.020	-36, 027.990	-36.020 7.990	+16.349		630.123158
6	856.649	36.649	-30.716	040.052	20.052	+7.777	615.917232	285.019273
7	827.826	7.826	-27.020	035.767	15.767	-16.349	426.024340	127.947274
24	829.629	9.629	+30.716	023.703	3.703	-7.777	113.741348	74.884733
							1041.941572	202.832007
							712.310424	915.142431
							1/2 = 356.155212	712.310424
7	-152, 827.826	-152.820 7.826	-4.672	-36, 035.767	-36.020 15.767	+11.637	73.663424	91.071162
8	824.957	4.957	-1.066	035.340	15.340	-12.490	16.352440	61.912930
23	826.760	6.760	+4.672	023.277	3.277	-11.637	15.310144	78.666120
24	829.629	9.629	+1.066	023.703	3.703	+12.490	3.947398	120.266210
							90.015864	140.579050
							70.758322	211.337372
							1/2 = 35.379161	70.758322

面積計算書

工区

2

ブロック

7-3

計算者



精算者



備考

水路

点	①	②	③	④	⑤	⑥	③	×	⑤	②	×	⑥
	X	X-(定数)	X _{n-1} -X _{n+1}	Y	Y-(定数)	Y _{n-1} -Y _{n+1}	+		-	+		-
	-152	152800		-35	35900							
17	864.329✓	64.329*	9.346	991.934✓	91.134✓	46.633			851.738364	2999.854257		
4	865.995✓	65.995✓	5.392	993.419✓	93.419✓	47.236	523.715248					2117.339820
5	858.937✓	58.937✓	9.346	038.370✓ ⁻³⁶	138.370✓	46.633	1293.206020					2702.409121
6	856.649✓	56.649*	5.392	040.052✓	140.052✓	47.236			755.160384	2675.872164		
							1796.921268		1606.899748	5675.726121		5865.749941
							190.022520✓					190.022520✓
									1/2 = 95.011260✓			

面積計算書

工
区

2

ブ
ロ
ック

7-3

計
算
者



精
算
者



備
考

隅切 I . II

点	①	②	③	④	⑤	⑥	③	×	⑤	②	×	⑥
	X	X-(定数)	X _{n-1} -X _{n+1}	Y	Y-(定数)	Y _{n-1} -Y _{n+1}	+		-	+		-
I	-152. 813.999	-152.810 3.999	+3.406	-35 982.227	-35.980 2.227	-2.502			7.585162	10.005498		
1	816.963	6.963	-0.442	982.692	2.692	+2.967	1.189864					20.659221
16	813.557	3.557	-2.964	983.194	3.194	-0.465	15.395016			1.654005		
							16.384886		7.585162	11.639303		20.659221
							8.999718					8.999718
							1/2 = 4.499859					
3	-152. 863.496	-152.860 3.496	+0.465	-35 989.990	-35.980 9.990	-2.964			4.645350	10.362144		
II	866.460	6.460	+2.499	990.455	10.455	+3.429			26.127045			22.151340
4	865.995	5.995	-2.964	993.419	13.419	-0.465	39.773916			2.787675		
							39.773916		30.772393	13.149819		22.151340
							9.001521					9.001521
							1/2 = 4.5007605					

面積計算書

工区

2

ブロック

7-3

計算者



精算者



備考

隅切ⅢⅣ

点	①	②	③	④	⑤	⑥	③ ×	⑤	② ×	⑥
	X	X-(定数)	X _{n-1} -X _{n+1}	Y	Y-(定数)	Y _{n-1} -Y _{n+1}	+	-	+	-
5	-152 858937	-152.850 8.937	+ 1.978	-36 038.370	-36.030 8.370	+ 0.294		16.555860		2.627478
Ⅲ	858627	8.627	- 2.288	040.346	10.346	+ 1.682	23.671648			14.510614
6	856649	6.649	+ 0.310	040.052	10.052	- 1.976		3.116120	-13.138424	
							23.671648	19.671980	13.138424	17.138092
							3.999668			3.999668
							1/2 = 1.999834			
Ⅳ	-152 806.502	-152.800 6.502	- 1.684	-36 032.597	-36.030 2.597	- 2.272	4.373348			14.772544
11	806.796	6.796	+ 1.978	030.619	0.619	+ 0.294		1.224382		1.998024
10	808.480	8.480	- 0.294	032.891	2.891	+ 1.978	0.849954			16.773440
							5.223302	1.224382	14.772544	18.771464
							3.998920			3.998920
							1/2 = 1.999460			

