

BLOCK NO. 8

街 区 計 算

街区略図

工区

ブロック

記入者

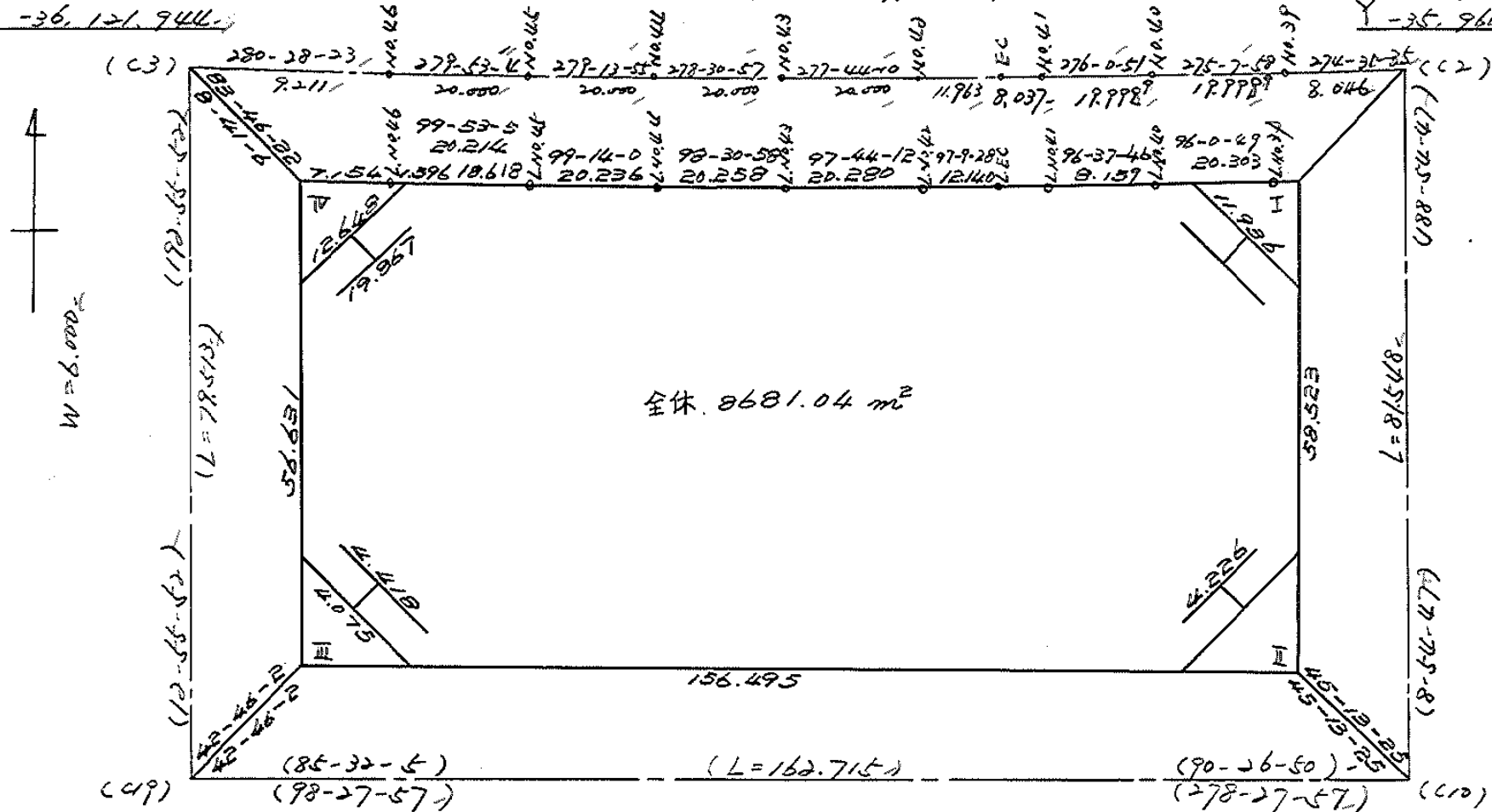
点検者



X -152,710.025-
Y -36,121.944-

W=37.50- 277-4-2 276-37-55

X -152,730.914-
Y -35,966.160-



全体 8681.04 m²



W=6.000-

L=78.513

L=87.518

W=6.000

X -152,787.522-
Y -36,137.727-

W=6.000-

X -152,811.477-
Y -35,978.795-

面積計算書

工区

N

ブロック

8

計算者



精算者



備考

全体

点	① X	② X-(定数) -152,700	③ X _{n-1} -X _{n+1}	④ Y	⑤ Y-(定数) -35,970	⑥ Y _{n-1} -Y _{n+1}	③ × ⑤ +	⑤ × ⑥ -	② × ⑥ +	③ × ⑥ -
I	-152,750.252	50.252	58.107	35,972.227	2.227	5.500		129,524,961		276,396,000
II	-152,808.072	108.072	34.780	35,991.277	11.277	163.858		392,909,660		17,708,461,776
III	-152,785.032	85.032	78.235	36,136.097	166.097	142.119	12,993,915,405			12,024,577,776
IV	-152,729.837	29.837	53.895	36,123.415	153.415	19.707	8,262,301,425		587,997,759	
L.No.46	-152,731.137	31.137	4.770	36,116.380	146.380	26.949		698,232,400	839,111,013	
L.No.45	-152,734.607	34.607	6.717	36,096.466	126.466	39.889		949,472,122	1,380,404,016	
L.No.44	-152,737.854	37.854	6.247	36,076.492	106.492	40.009		665,255,524	14,500,686	
L.No.43	-152,740.854	40.854	5.730	36,056.457	86.457	40.130		495,398,610	16,394,710,20	
L.No.42	-152,743.584	43.584	4.224	36,036.362	66.362	32.143		280,213,088	40,292,051,2	
L.EC	-152,745.278	45.078	2.436	36,024.314	54.314	20.153		132,308,904	19,024,869,34	
L.No.41	-152,746.020	46.020	3.069	36,016.289	46.289	28.296		141,815,421	194,219,920	
L.No.40	-152,748.147	48.147	3.943	35,996.018	26.018	40.412		102,588,970	1945,716,564	
L.No.39	-152,749.963	49.963	2.105	35,975.777	5.777	23.789		12,202,685	11,88,869,207	
								21,262,117,870	39,000,225,07	127,07,330,23
								17,362,095,321		30,069,425,552
										17,362,095,321

$\frac{1}{2} = 8681,007,605$

$8681,007,605 - (38,10 + 4,07 + 4,02 + 38,18 + 67,15) = 85,26,20$

面地計算

画地略図

工区

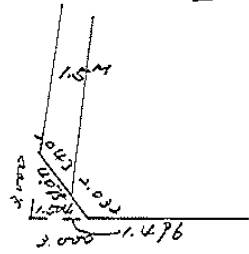
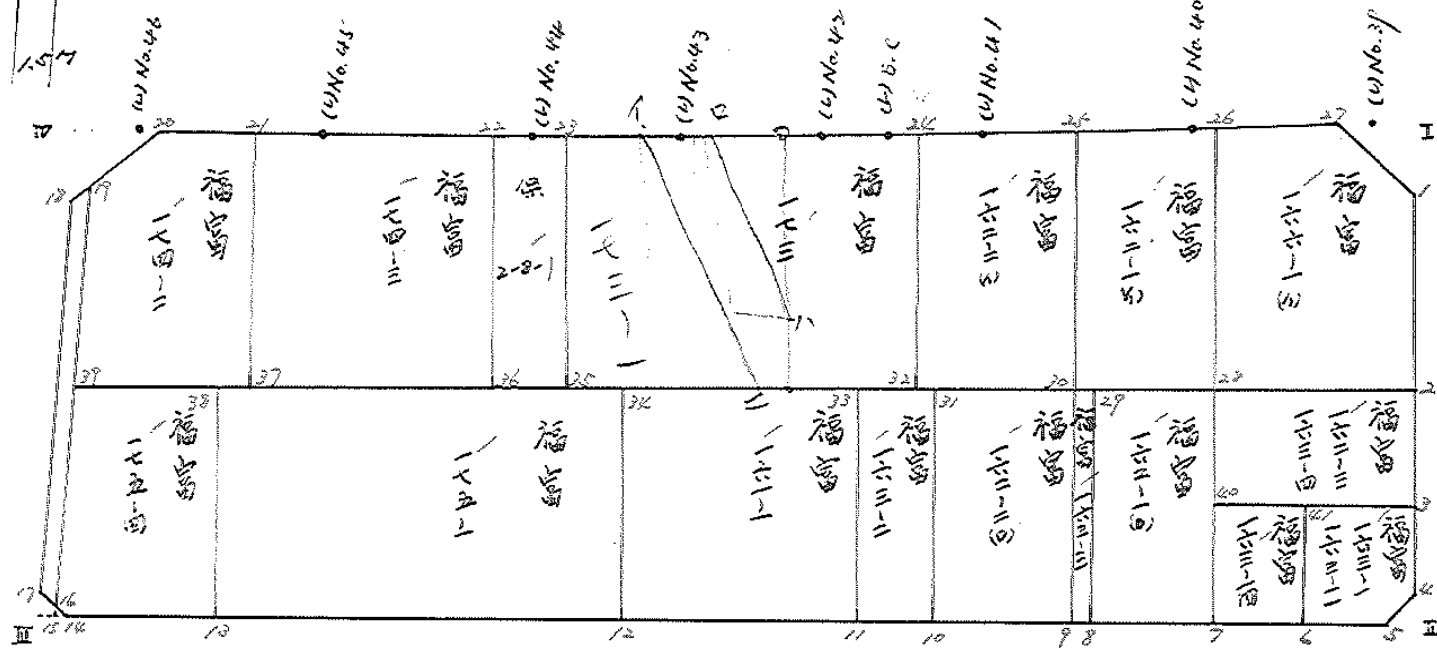
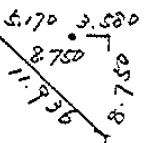
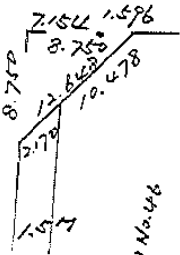
2

ブロック

2

記入者

点検者



面積計算書

工区

2

ブロック

8

計算者



精算者



備考

積算 174-3

(4系) 2-8-1

点	①	②	③	④	⑤	⑥	③	⑤	②	⑤
	X	X-(定数)	X _{n-1} -X _{n+1}	Y	Y-(定数)	Y _{n-1} -Y _{n+1}	+	-	+	-
	-152,	-152,730-			-36,080-					
21	733.414	3.414	- 26.875	-36.102,315	23.315	- 11.027	626.590625		37.646178	
No.45	734.607	4.607	+ 3.287	-36.096.466	16.466	- 19.731		54.123742	90.900717	
22	736.701	6.701	+ 29.820	-36.083,594	3.584	- 8.755		106.874880	58.667255	
36	764.427	34.427	+ 24.781	-36.087,711	7.711	+ 23.909		191.086291		823.115143
37	761.482	31.482	- 31.013	-36.107.493	27.493	+ 15.604	852.640409			491.245128
							1479.231034	352.080913	187.214150	134.360271
							1127.146121			1127.146121
							$\frac{1}{2} = 563.5730605$			
	-152,	-152,730,		-36,	-36,070-					
22	736.701	6.701	- 26.573	083.5846	13.584	- 11.219	360.967632		75.178519	
No.44	737.854	7.854	+ 1.573	076.492	6.492	- 9.896		10.211916	77.723184	
23	738.274	8.274	+ 28.048	073.688	3.688	+ 1.308		103.44024		10.822392
35	765.902	35.902	+ 26.153	077.800	7.800	+ 14.023		203.99340		503.453746
36	764.427	34.427	- 29.201	087.711	17.711	+ 5.784	517.178911			199.125768
							878.146543	317.646340	152.901723	713.401906
							560500203			563.560203
							$\frac{1}{2} = 280.2501015$			

面積計算書

工区

2

ブロック

8

計算者



精算者



備考

福富

161-1

175-1

点	①	②	③	④	⑤	⑥	③ × ⑤	② × ⑥
	X	X-(定数)	X _{n-1} -X _{n+1}	Y	Y-(定数)	Y _{n-1} -Y _{n+1}	+	-
11	-152 800.344	-152.760 40.344	+21.447	033.215	-36 13.215	+42.723	283.422105	1723.616712
12	794.588	34.588	-32.960	071.889	51.889	+34.625	1710.261440	1197.609500
34	767.384	7.384	-21.447	067.840	47.840	-42.723	1026.024480	315.466632
33	773.141	13.141	+32.960	029.166	9.166	-34.625	302.111360	455.007125
							2736.285920	585.533465
							2150.782455	2150.782455
							1/2 = 1075.3762275	
12	-152 794.588	-152.760 34.588	+20.932	071.889	-36 11.889	+46.185	248.860548	1597.446780
13	788.316	28.316	-33.475	114.025	54.025	+38.087	1808.486875	1078.471692
38	761.113	1.113	-20.932	109.976	49.976	-46.185	1046.097632	51.403905
34	767.384	7.384	+33.475	067.840	7.840	-38.087	262.444000	281.234408
							2854.584507	511.304548
							2343.279959	2343.279959
							1/2 = 1171.6399795	

面積計算書

工
区

Z

ブ
ロ
ック

8

計
算
者



精
算
者



備
考

補
密

166-1 (1)

162-3, 163-4

点	①	②	③	④	⑤	⑥	③ ×	⑤	② ×	⑥
	X	X-(定数)	X _{n-1} -X _{n+1}	Y	Y-(定数)	Y _{n-1} -Y _{n+1}	+	-	+	-
1	-152 758.896	-152.740 18.896	+31.400	-35 973.585	-35.970 3.585	-3.910		112.569000	73.883360	
2	780.900	40.900	+19.147	977.036	7.036	+22.643		134.718292	926.098700	
28	778.043	38.043	-32.377	996.228	26.228	+14.798	849.183956		562.960314	
26	748.523	8.523	-28.543	991.834	21.834	-15.282	623.207862		130.248486	
27	749.500	9.500	+10.373	980.946	10.946	-12.249		113.542858	173.365500	
							1472.391818	360.830150	377.497346	1489.059014
							1111.561668			1111.561668
							1/2 = 355.780834			
2	-152 780.900	-152.770 10.900	+16.691	-35 977.036	-35.970 7.036	-17.023		117.437876	185.550700	
3	794.734	24.734	+10.993	979.205	9.205	+21.254		101.190565	525.696436	
40	791.893	21.893	-16.691	998.290	28.290	+17.023	472.188390		372.684339	
28	778.043	8.043	-10.993	996.228	26.228	-21.254	288.324504		170.945922	
							760.512794	218.628441	356.496622	892.380975
							541.884353			541.884353
							1/2 = 270.9421765			

面積計算書

工区

Z

ブロック

8

計算者



精算者



備考

福富

163-1 (A)

163-3

点	①	②	③	④	⑤	⑥	③ ×	⑤	② ×	⑥	
	X	X-(定数)	X _{n-1} -X _{n+1}	Y	Y-(定数)	Y _{n-1} -Y _{n+1}	+	-	+	-	
7	-152 805.247	-152.770 35.247	+23.355	-36 000.278	-35.990 10.278	+15.128		262.654290		533.216616	
8	803.598	33.598	-28.853	011.356	21.356	+7.029	616.184668			236.160342	
29	776.394	6.394	-25.553	007.307	17.307	-15.128	442.280385		96.728432		
28	778.043	8.043	+28.853	-35 996.228	6.228	-7.029		179.696484	36.534247		
								1058.465053	442.350774	153.262679	769.376958
								616.114279			616.114279
								1/2=308.0571395			
8	-152 803.598	-152.770 33.598	+26.924	-36 011.356	-36.000 11.356	+5.928		305.748944		199.168944	
9	803.318	33.318	-27.483	013.235	13.235	-2.170	363.737505		72.300060		
30	776.115	6.115	-26.924	009.186	9.186	-5.928	247.323864		36.249720		
29	776.394	6.394	+27.483	007.307	7.307	+2.170		200.818221		13.874980	
								611.061369	506.367225	108.549780	213.043924
								104.494144			104.494144
								1/2=52.247072			

面積計算書

工区

2

ブロック

3

計算者



計算者



備考

宿客 162-141

点	①	②	③	④	⑤	⑥	⑦	⑧	⑨	⑩
	X	X-(定数)	X _{n-1} -X _{n+1}	Y	Y-(定数)	Y _{n-1} -Y _{n+1}	+	-	+	-
	-152,	-152,700		-34,	-35,900					
25	747.213	47.213	27968	004.924	104.924	13.168	2933.395712		621.700794	
No.40	748.147	48.147 ⁺	1310	996.018	96.018 ⁻	13.050		125.783580	628.318350	
26	748.523	48.523 ⁺	29896	991.834	91.834 ⁺	0.210		2745.467260		10.189830
28	778.043	78.043 ⁺	27.572	996.228	96.228 ⁺	17.352		2655.122976		1354.202136
30	776.115	76.115 ⁺	30.830	009.186	109.186 ⁺	8.656	3366.204380			659.851440
							6297.600092	5526.375820	1250.019134	2023.243406
							773.224272			773.224272
									1/2 = 386.612136	

面積計算書

「 2

ブロック

8

計測書



精算書



備考

福富

173

162-2 (1)

点	①	②	③	④	⑤	⑥	⑦	⑧	⑨	⑩
	X	X-(定数)	X _n - X _{n-1}	Y	Y-(定数)	Y _n - Y _{n-1}		-	+	
23	738.274	8.274	-25.048	073.688	63.688	-21.343	1595.257024		176.591982	
(4) No.43	740.854	10.854	+5.310	056.457	46.457	-37.326	246.686670405		136.6404	
(4) No.42	743.584	13.584	+4.224	036.362	26.362	-32.143	111.353088436		630.512	
(4) E.C	745.078	15.078	+2.156	024.314	14.314	-17.745	30.860984		267.559110	
24	745.740	15.740	+29.005	018.617	8.617	-1.478	249.936085		23.263720	
32	774.083	44.083	+20.162	022.836	12.836	+59.783	258.799432		2608.964189	
35	765.902	35.902	-35.809	077.800	67.800	+50.852	2427.850200		1825.688509	
							4023.107224		897.636259	
							1309.181728		4424.652693	
							3125.470965		3125.470965	
							1/2 = 1562.7354825			
34	745.740	5.740	-28.063	018.617	18.617	-6.627	522.448871		38.038980	
(4) No.41	746.020	6.020	+1.473	016.209	16.209	-13.733	23.87585782		672.660	
25	747.213	7.213	+30.095	004.884	4.884	-7.023	146.983980		50.656899	
30	776.115	36.115	+26.870	009.186	9.186	+17.952	246.827825		648.336480	
32	774.083	34.083	-30.375	022.836	22.836	+9.431	693.643500		321.436773	
							1216.092371		417.687657	
							171.368539		969.773253	
							798.404714		798.404714	

1/2 = 399.202357

面積計算書

工
区

Z

ブ
ロ
ック

8

計
算
者



精
算
者



備
考

福喜

163-1, 163-11

~~163-14~~

点	①	②	③	④	⑤	⑥	③ × ⑤		② × ⑥	
	X	X-(定数)	X _{n-1} -X _{n+1}	Y	Y-(定数)	Y _{n-1} -Y _{n+1}	+	-	+	-
3	-152 794.734	-152.790 4.734	+11.978	-35 979.205	-35.970 9.205	-9.149			110.257490	43.311366
4	805.108	15.108	+12.896	980.832	10.832	+3.059			139.689472	76.431372
5	807.630	17.630	+1.373	984.264	14.264	+11.137			19.613000	196345310
6	806.483	16.483	-14.300	991.969	21.969	+5.717	318.550300			94.233311
41	793.130	3.130	-11.749	989.981	19.981	-12.764	234.756769		39.951320	
							553.307269	269.559962	83.262685	367.009993
							283.747307			283.747307
							1/2 = 141.8736535			
6	-152 806.483	-152.790 16.483	+12.117	-35 991.969	-35.980 11.969	+10.297			145.028373	169.725451
7	805.247	15.247	-14.644	-36 000.278	20.278	+6.321	296.951032			96.376287
40	791.893	1.839	-12.117	-35 998.290	18.290	-10.297	221.619930		18.936183	
41	793.130	3.130	+14.644	989.981	9.981	-6.321			146.161764	19.784730
							518.570962	291.190137	38.720913	266.101738
							227.380825			227.380825
							1/2 = 113.6904125			

面積計算書

工区

2

ブロック

8

計算者

精算者

備考

福鹿

162-2 (A)

163-2

点	①	②	③	④	⑤	⑥	③	×	⑤	②	×	⑥
	X	X-(定数)	X _{n-1} -X _{n+1}	Y	Y-(定数)	Y _{n-1} -Y _{n+1}	+	-	+	-		
9	-152 803.318	-152.770 33.318	+23.539	-36 013.235	-36.000 13.235	+15.226			338.008665			507.299868
10	801.654	31.654	-28.867	024.412	24.412	+7.128	704.701204					223.629712
33/	774.451	4.451	-23.339	020.363	20.363	-15.226	520.050657					67.770926
30	776.115	6.115	+28.867	009.186	9.186	-7.128			265.172262	43.587720		
									1224.751861	603.180927	111.358646	732.929580
									621.570934			621.570934
									1/2 = 310.785467			
10	-152 801.654	-152.770 31.654	+25.893	-36 024.412	-36.020 4.412	+12.852			114.239916			406.217208
11	800.344	30.344	-28.513	033.215	13.215	+4.754	376.799295					144.255376
33	773.141	3.141	-25.893	029.166	9.166	-12.852	237.335238			40.368132		
31	774.451	4.451	+28.513	020.363	0.363	-4.754			10.350219	21.160054		
									614.134533	124.590135	61.528186	531.072584
									489.544398			489.544398
									1/2 = 244.772199			

面積計算書

工区

2

ブロック

8

計算者



精算者



備考

福島 175-4

174-2

点	① X	② X-(定数)	③ X _{n-1} -X _{n+1}	④ Y	⑤ Y-(定数)	⑥ Y _{n-1} -Y _{n+1}	③ × ⑤	② × ⑥	
13	-152 788.316	-152.750 38.316	+24.361	-36 114.025	-36.100 14.025	+23.143	341.663025	886.747188	
14	785.474	35.474	-4.320	133.119	33.119	+20.239	149.697880	717.958286	
16	783.796	33.796	-27.108	134.264	34.264	-4.693	928.828512	158.604628	
39	758.366	8.366	-22.683	128.426	28.426	-24.288	644.786958	203.193408	
38	761.113	11.113	+29.950	109.976	9.976	-14.401	298.781200	160.038313	
							1723313350640.444225	521.836349	1604.705474
							1082.869125		1082.869125
							1/2 = 541.4345625		
39	-152 758.366	-152.730 28.366	-24.310	-36 128.426	-36.100 28.426	+16.067	691.036060	435.756522	
19	737.172	7.172	-26.955	123.560	23.560	-13.618	635.059800	97.668296	
20	731.411	1.411	-3.738	14.808	14.808	-20.245	35.648464	28.565695	
21	733.414	3.414	+30.071	103.315	3.315	-7.315	99.685365	24.973410	
37	761.482	31.482	+24.932	107.493	7.493	+25.111	186.965336	790.544502	
							1381.74432428665070	151.207401	1246.301024
							1095.093623		1095.093623
							1/2 = 547.5468115		

面積計算書

工
区

2

ブ
ロ
ック

8

計
算
者



精
算
者



備
考

陽町 I.

Ⅱ.

点	①	②	③	④	⑤	⑥	③ × ⑤		② × ⑥	
	X	X-(定数)	X _{n-1} -X _{n+1}	Y	Y-(定数)	Y _{n-1} -Y _{n+1}	+	-	+	-
I	-152,750.252	-152,740 10,252	+8,933	-35,977.229	-35,970 2,229	-2,212		19,911,657	22,677,424	
1	-152,758.896	18,896	-0,752	-35,977.585	3,585	+8,717	2,695,920			164,716,432
27	-152,749,500	9,500	-8,933	-35,980,946	10,946	+2,212	97,780,618			21,014,000
No.39	-152,749,963	9,963	+0,752	-35,975,797	5,797	-8,717		4,359,344	86,847,471	
							100,476,538	24,271,001	109,524,895	185,730,432
							76,205,537			76,205,537
								1/2 = 38,102,768.5		
4	-152,805,108	-152,800 5,108	+0,442	-35,980,832	-35,980 0,832	-2,967		0,367,744	15,155,436	
Ⅱ	-152,808,072	8,072	+2,522	-35,981,297	1,297	+3,432	3,271,034			27,703,104
5	-152,807,630	7,630	-2,964	-35,984,264	4,264	-0,465	12,638,496		3,547,950	
							12,638,496	3,638,778	18,703,386	27,703,104
							8,999,718			8,999,718
								1/2 = 4,499,859		

面積計算書

工
区

2

ブ
ロ
ック

8

計
算
者



精
算
者



備
考

陽切

Ⅲ

Ⅳ

点	①	②	③	④	⑤	⑥	③ × ⑤		② × ⑥	
	X	X-(定数)	X _{n-1} -X _{n+1}	Y	Y-(定数)	Y _{n-1} -Y _{n+1}	+	-	+	-
17	-152,782.108	-152,780 2.108	+0.442	-36,135.416	-36,130 5.416	-2.968		2.393872	6.256544	
14	-152,785.474	5.474	+2.924	-36,133.114	3.119	+0.671		9.119956		2.673054
Ⅲ	-152,785.032	5.032	-2.366	-36,136.087	6.087	+2.297	-20.488842			11.558504
							20.488842	11.513828	6.256544	15.231558
							8.975014			8.975014
								1/2 = 4.487507		
18	-152,738.365	-152,725 13.365	+1.574	-36,125.373	-36,110 15.373	-8.607		24.197102	115.032555	
20	-152,731.411	6.411	-7.228	-36,114.808	4.808	-8.993	34.752224		57.654123	
No.46	-152,731.137	6.137	-1.574	-36,116.380	6.380	+8.607	10.042120			52.821159
Ⅳ	-152,709.837	4.837	+7.228	-36,123.414	12.415	+8.993		96.963620		43.499141
							44.794344	121.160722	172.686678	96.320300
								76.366378	76.366378	
								1/2 = 38.183189		

計年月
算日

計算者



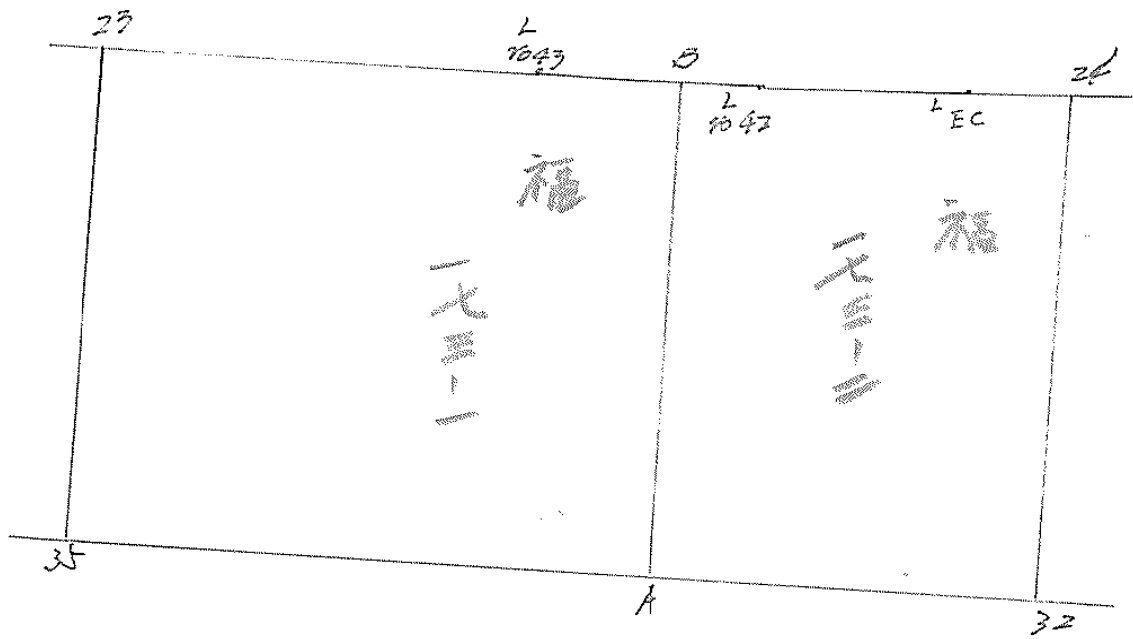
検査者



B.NO. 8

各筆面積計算書

地番	算式	隅切	地積	摘要
1	福富 166-1(4)		555 78	
2	" 162-1(4)		386 61	
3	" 162-2(4)		399 20	
4	" 173		1562 73	
5	" 174-3		563 57	
6	" 174-2		587 54	
7	" 162-3 163-4		270 94	
8	" 163-1 163-11		141 87	
9	" 163-14		113 41	
10	" 162-1(10)		308 05	
11	" 163-3		52 24	
12	" 162-2(10)		310 78	
13	" 163-2		244 77	
14	" 161-1		1075 37	
15	" 175-1		1171 63	
16	" 175-4		541 43	8245.92
17	保 2-8-1		280 25	280.25
	水路	69.55		8526.17 小計
	隅切 I	38.10		
	" II	4.49		
	" III	4.48		
	" IV	38.18		
	計		8,680.97	
	全体		8,681.04	差 0.07



面積計算書

工
区

Z

フ
ロ
ン
ク

8

計算者

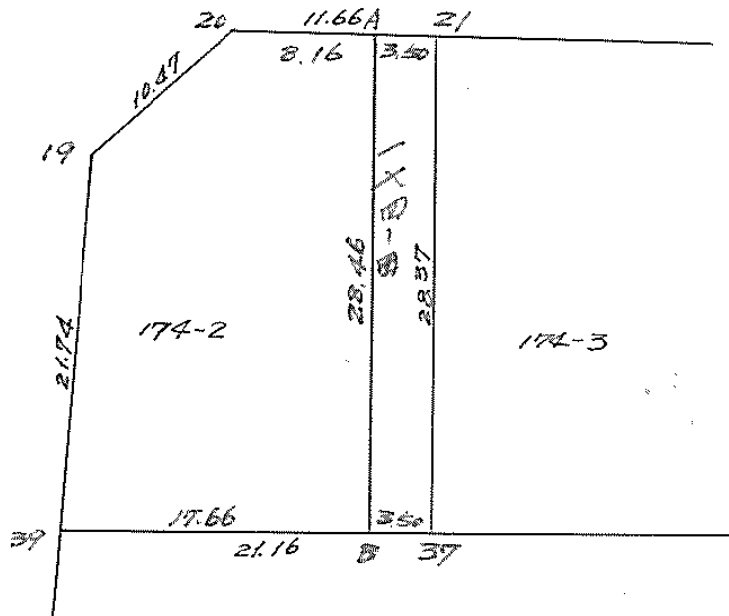


測量者

備考

福富173-1

点	①	②	③	④	⑤	⑥	⑦	⑧	⑨	⑩
	X	X - (定数)	X _{n-1} - X _{n+1}	Y	Y - (定数)	Y _{n-1} - Y _{n+1}	+	-	+	-
B	743.022	43.022	+ 29.983	040.502	0.502	- 11.815			15.051	466.508.304.930
A	770.837	70.837	+ 22.880	044.642	4.642	+ 27.298			106.208	960.2642.078426
35	765.902	65.902	- 32.563	077.800	27.800	+ 29.046	-1230.821400			1916.189492
23	738.274	38.274	- 25.048	073.688	33.688	- 21.343	843.817024			916.881982
No.43	740.854	40.854	+ 4.748	056.457	16.457	- 33.186			78.137	836.1355.780804
									2074.698424	199.398262.2680.967756.4556.267918
									1875.300162	1875.300162
									x 1/2 = 937.65	



面積計算書

工区

2

ブロック

8

計算者

精算者

備考

点	①	②	③	④	⑤	⑥	③ × ⑤		② × ⑥	
	X +730.000	X - (定数)	X _{n-1} - X _n	Y +110.000	Y - (定数)	Y _{n-1} - Y _n	+	-	+	-
19	-727.172		-26.955	-120.560		-12.618	265.50980		97.668296	
20	-721.411		-4.059	-114.808		-16.787	20.962072		22.700567	
A	-722.810		+29.556	-106.760		-3.854	95.672772		10.891202	
B	-760.967		+25.550	-110.954		+21.660		24.377562		670.828121
29	-758.066		-20.795	-128.426		+12.606	428.446670		25.7581796	
							920.687014	24.377562	102.210165	1028.419917
							896.209752		896.209752	
							896.209752 × 1/2 =		448.104876	
	+720.000			+100.000					448.10	m ²
A	-722.810		-27.553	-106.763		-7.639	186240929		21.488607	
21	-723.414		+28.669	-103.315		+0.720		95.027925		2.492220
27	-761.482		+27.550	-107.993		+7.629		206.454629		240.490998
B	-760.967		-28.669	-110.954		-0.720	214.040226		22.608910	
							600.281165	201.492264	44.094417	242.982218
							198.888801		198.888801	
							198.888801 × 1/2 =		99.444405	
									99.44	m ²

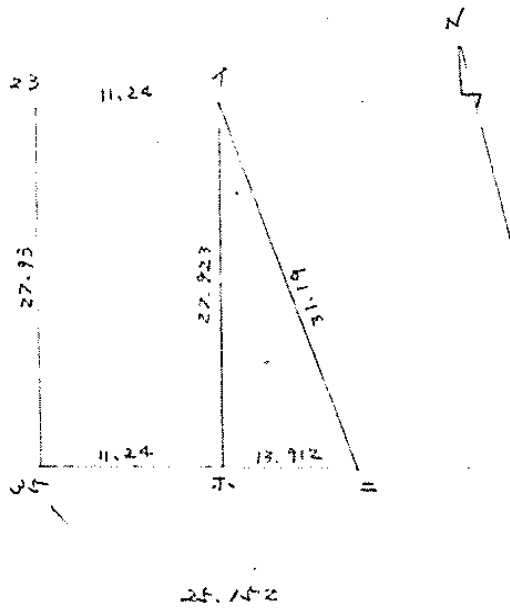
			38	A	34			
			20436	22.163				
			27.542					
			20536	22.165				
			13	B	12			

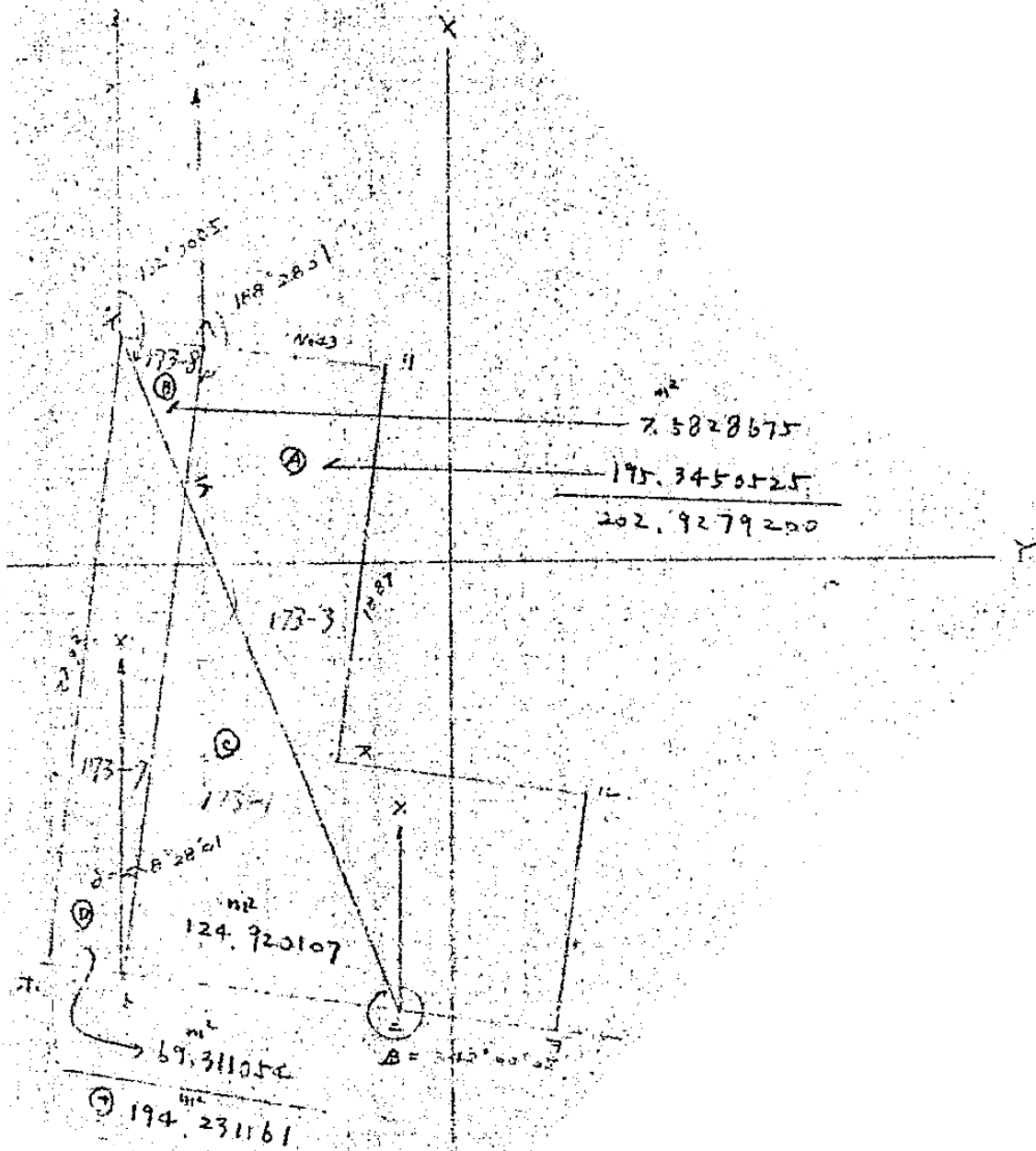
計算者

検査者

173~6

	x	y	y'	y''	y' + y''	倍面積 (ZA) m ²	
						+	-
23	-152.738.274	-36.073.688	-36.062.560	+36.077.800	+ 15.240		2327731.295760
1	-152.739.940	-36.062.560	-36.066.683	+36.073.688	+ 7.005		1069943.27970
木	-152.767.557	-36.066.683	-36.077.800	+36.062.560	- 15.240	2328.177.568680	
25	-152.765.902	-36.077.800	-36.073.688	+36.066.683	- 7.005	1070125.143510	
					合計	3398302.712190	3397674.575460
						倍面積 628.13673	面積 314.068365





座標法面積計算 (173-3)

測點	X	ΔX	Y	ΔY	(+) F ₁ $X \times \Delta Y$	(-) F ₂ $Y \times \Delta X$
=	-769.605		-52.922			
		-28.751		+7.535	-2615.687900	+1798.662560
1	-739.940		-62.560			
		+1.46610		-10.16607	+7531.573624	-52.771608
43	-740.854		-56.457			
		+19.21710		-1.28507	+952.758737	-1006.859392
5	-741.40610		-52.39393			
		+20.28090		-9.11393	+6927.234800	-1118.936395
^	-760.07110		-55.17193			
		+10.76590		-10.52993	+8020.510792	-465.948152
1	-761.687		-43.280			
		+7.918		+9.642	-7472.410354	-353.475356
A	-770.837		-44.642			
		-30.897		+17.918	-13789.782390	+1635.131034
=	-769.605		-52.922			

+59.648
-59.648

+31.095 +23432.077953 +3433.793594
-31.095 -23837.880644 -3027.990903

Σ 405.802691 Σ 405.802691
 $\frac{1}{2}$ 202.901346 $\frac{1}{2}$ 202.901346

173-3

	x	y	y'	y''	y' + y''	2A	
						+	-
Λ	-152 740.347	-36059.842	-36056.457	+36060.655	+ 4.198		641203.976706
1/43	-152 740.854	-36056.457	-36052.393	+36059.842	+ 17.449		1137766.321446
∏	-152 741.406	-36052.393	-36055.171	+36056.457	+ 1.286		196425.448116
又	-152 760.071	-36055.171	-36043.280	+36052.393	+ 9.113		1392102.527023
∪	-152.761.687	-36043.280	-36044.642	+36055.171	+ 10.529		1608427.802423
∩	-152 770.837	-36044.642	-36052.922	+36043.280	- 9.642	1473016.410314	
≡	-152 769.605	-36052.922	-36060.655	+36044.642	- 16.013	2446299.684865	
∫	-152.745.805	-36060.655	-36059.842	+36052.922	- 6.920	1057000.970600	
						4976317.065819	4975926.375714
						390.690105	
						195 ^m 3450525	

A =

195.22 m²

173 ~ 1

	x	y.	y'	y''	y' + y''	保面積 (2A) m ²	
						+	-
イ	-152.739.940	-36.062.560	-36.052.922	+36.066.683	+ 13.761		2101854.314340 ^{m²}
ニ	-152.769.605	-36.052.922	-36.066.683	+36.062.560	- 4.123	629867.081415 ^{m²}	
ホ	-152.767.557	-36.066.683	-36.062.560	+36.052.922	- 9.638	147.2373.714366 ^{m²}	
					合計	2102242.795781 ^{m²}	2101854.314340 ^{m²}
					保面積	388.481441 ^{m²}	
					面積	194.2407205 ^{m²}	

173-1

	x	y	y'	y''	$y' + y''$	+	-
千	-152,745.805	-36,060.655	-36,052.922	+36,063.953	+ 11.031		1,684,938.974955
百	-152,769.605	-36,052.922	-36,063.953	+36,060.655	- 3.298	503834.159290	
十	-152,767.963	-36,063.953	-36,060.655	+36,052.922	- 7.733	1181354.659879	
						1,685,188.814169	1,684,938.974955
						249,840,214	
						124,920,107	

2A =

A =

173~7

	x	y	y'	y''	$y' + y''$	$+$	$-$
1.	-152 739.940	-36 062.560	-36 040.655	+36.066.683	+6.028		92 0716,358320
4	-152 745.805	-36 060.655	-36 063.953	+36 062.560	- 1.393	212.774,406365	
F	-152 767.763	-36 063.953	-36 066.683	+36 060.655	- 6.028	920885,280964	
T.	-152 767.557	-36 066.683	-36 062.560	+36 063.953	+ 1.393		212805,206901
						1133.660,187329	1133521,565221
						$2A =$ 138,622108	
						$A =$ 69,311054	

69.32 m

座標法面積計算 (177-5)

測点	X	ΔX	Y	ΔY	(+) F ₁	(-) F ₂
					$X \times \Delta Y$	$Y \times \Delta X$
ハ	-760.07110		-55.17193			
		-18.71510		-5.75493	+3970.177767	+959.600067
ホ	-741.40610		-52.39393			
		+20.2809		-9.113930	+6760.312261	-1010.333595
コ	-741.756		-49.817			
		+18.71510		+5.75493	-4078.780567	-792.697528
カ	-761.687		-47.280			
		-20.2809		+9.11393	-6927.234800	+1118.936395
ハ	-760.07110		-55.17193			

+38.596000
-38.596000

+14.468860 +10730.490028 +2078.536462
-14.468860 -11006.015367 -1807.011123

$\frac{1}{2} 275.525339$ $\frac{1}{2} 275.525339$
 $\frac{1}{2} 137.762670$ $\frac{1}{2} 137.762670$

