

**BLOCK NO. 9**

**街区計算**

街区略図

工区

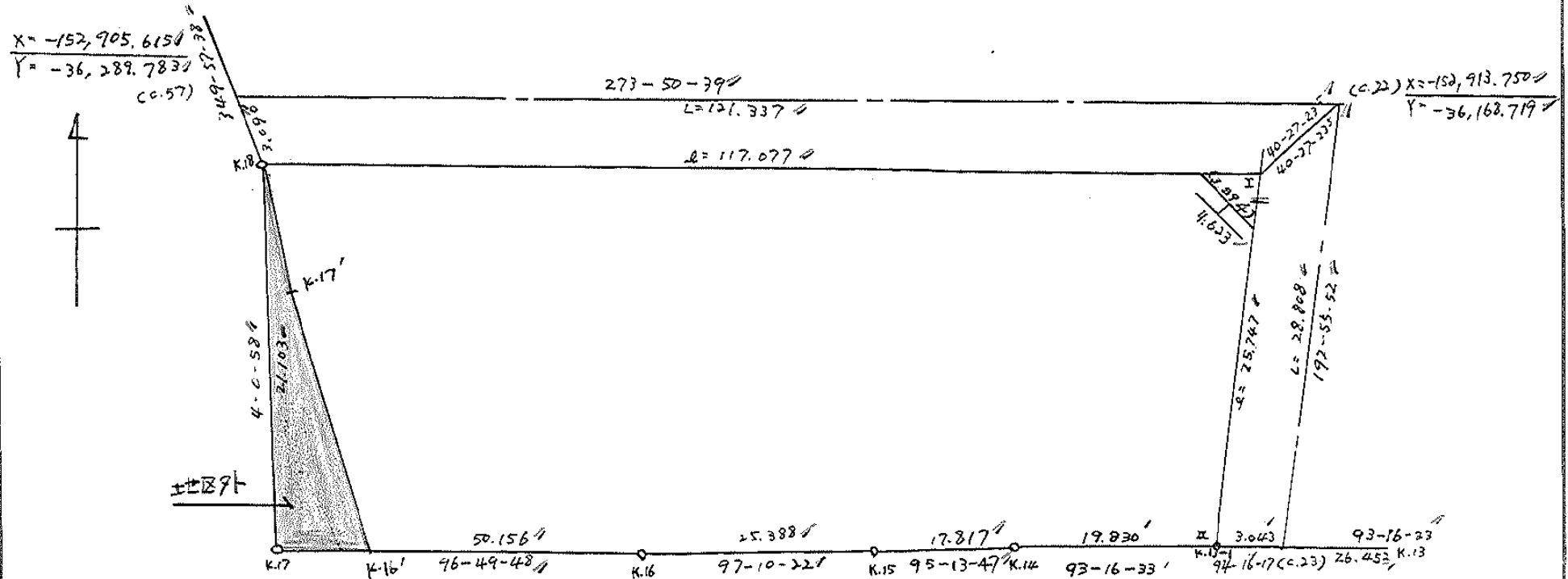
2

ブロック

9

記入者

点検者



$X = -152,905.6150$   
 $Y = -36,289.7833$   
 (C.57)

273-50-39  
 $L = 121.337$   
 $L = 117.077$

(C.22)  $X = -152,913.7500$   
 $Y = -36,168.7190$



±地区

$X = -152,941.8274$   
 $Y = -36,175.1664$

- DN09  $X = -152,941.6010$
- (K.13-1)  $Y = -36,178.1920$
- K.14  $X = -152,940.4680$   
 $Y = -36,197.9900$
- K.15  $X = -152,938.2440$   
 $Y = -36,215.7330$
- K.16  $X = -152,935.6740$   
 $Y = -36,240.9220$
- K.17  $X = -152,929.7090$   
 $Y = -36,290.7220$
- K.18  $X = -152,908.6580$   
 $Y = -36,289.2440$

- K.16'  $X = -152,970.5160$   
 $Y = -36,233.9900$
- K.17'  $X = -152,917.1420$   
 $Y = -36,287.7580$



# 圖地計算

画地略図

工区

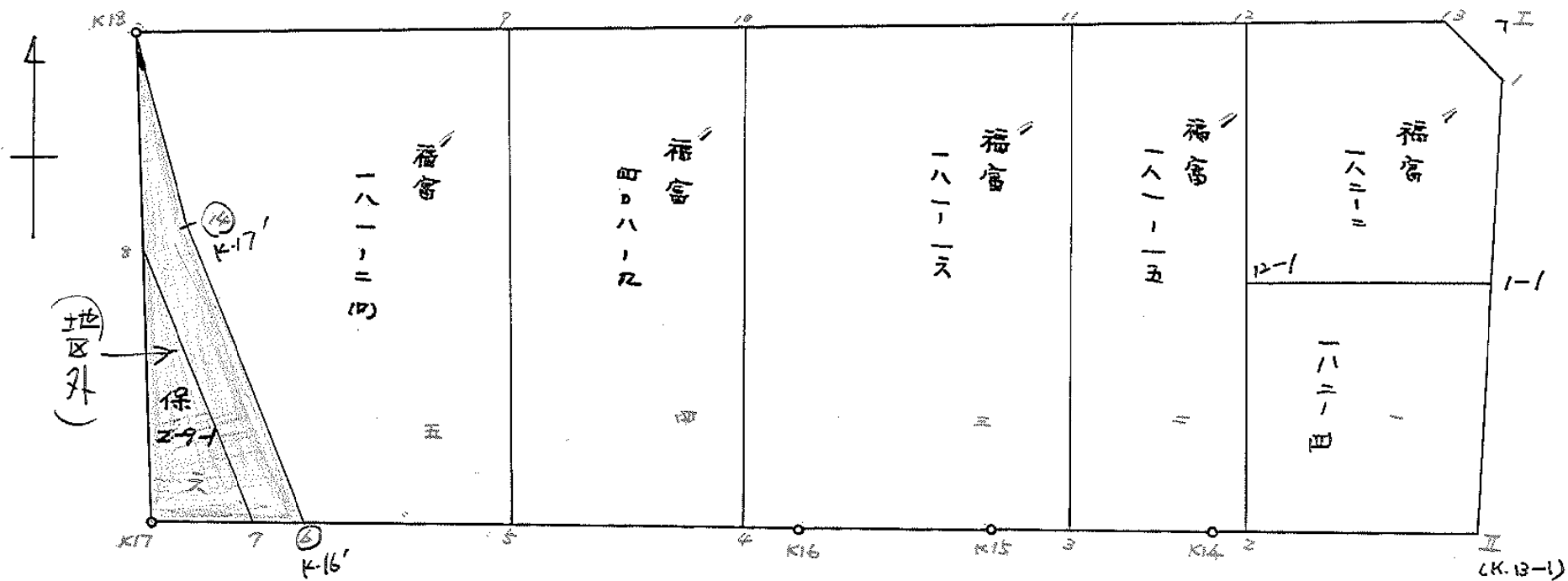
ノ

ブロック

ク

記入者

点検者



# 面積計算書

工  
区

2

ブ  
ロ  
ック

9

計  
算  
者



精  
算  
者



備  
考

福富 182-2 . 181-15

福富

点	①	②	③	④	⑤	⑥	③ × ⑤	② × ⑥
	X	X-(定数)	X <sub>n-1</sub> -X <sub>n+1</sub>	Y	Y-(定数)	Y <sub>n-1</sub> -Y <sub>n+1</sub>	+	-
1	<del>919.431</del>	<del>17.431</del>	<del>25295</del>	<del>173.101</del>	<del>3.101</del>	<del>2.768</del>		<del>53.725008</del>
II (K13-1)	941.601	41.601	21.080	178.172	8.172	24.135	172.697360	100.4040135
2	940.511	40.511	26.645	197.236	7.236	17.323	725.713220	701.772053
12	914.956	14.956	24.205	195.515	25.515	21.912	617.590575	326.220272
13	916.306	16.306	4.475	175.424	5.424	22.414	24.272400	345.492684
							1343.293795	275399533
							1067894240	691702956
								1759.597196
								1067894240
								1/2 = 533.947120
2	940.511	40.511	25.512	197.236	7.236	2.075	184.604832	100.264725
K14	940.468	40.468	1.303	197.990	7.990	14.519	10.410970	597.554892
3	939.208	39.208	26.490	211.755	21.755	12.096	576.289728	473.967888
11	913.978	13.978	24.252	210.076	20.076	16.240	486.883422	227.002720
12	914.956	14.956	26.533	195.515	5.515	12.840	146.329495	172.035040
							1073.584072	330934327
							742.649745	419.037760
								1161.697505
								742.649745
								1/2 = 371.3248725

# 面積計算書

工区

2

ブロック

9

計算者



精算者

備考

補綴 19292  
19204

点	① X	② X-(定数)	③ X <sub>n-1</sub> -X <sub>n+1</sub>	④ Y	⑤ Y-(定数)	⑥ Y <sub>n-1</sub> -Y <sub>n+1</sub>	③ × ⑤	② × ⑥	
		152900			36170				
1	152919.431	19.431	12.129	36173.101	3.101	4.241	37.792089	4.682271	
1-1	152928.495	28.495	7.847	36175.183	5.183	23.244	40.671001	462.337780	
12-1	152927.278	27.278	13.539	36196.345	26.345	20.332	356.684755	534.616296	
12	152914.956	14.956	10.972	36195.515	25.515	20.921	277.950580	312.894476	
13	152916.306	16.306	4.475	36175.424	5.424	22.414	24.272400	365.482684	
							636.635535	102.741490	683.660031
							533.894065		1216.941076
									1/2 = 266.9470225
		152920			36170				
1-1	152928.495	8.495	14.323	36175.193	5.193	18.153	74.236109	154.209735	
II	152941.601	21.601	12.016	36178.192	8.192	22.053	98.435072	476.366853	
2	152940.511	20.511	14.323	36197.236	27.236	18.153	390.101228	372.336183	
12-1	152927.278	7.278	12.016	36196.345	26.345	22.053	316.561520	160.501734	
							706.662748	172.671181	314.711469
							533.991567		802.703036
									1/2 = 266.9957935

# 面積計算書

工区

2

ブロック

9

計算者



精算者



備考

福富 181-16-408-9

福富

点	①	②	③	④	⑤	⑥	③	×	⑤	②	×	⑥
	X	X-(定数)	X <sub>n-1</sub> -X <sub>n+1</sub>	Y	Y-(定数)	Y <sub>n-1</sub> -Y <sub>n+1</sub>	+	-	+	-		
3	-152 939.208	-152,900 39.208	24.866	-36 211.755	-36,200 11.755	5.65		292.299830		221.79656		
K15	938.844	38.844	3.534	215.733	15.733	29.167	55.600472			1132.962948		
K16	935.674	35.674	3.788	240.922	40.922	30.350	155.012536			1082.705900		
4	935.056	35.056	24.013	246.083	46.083	3.629	1106.591079			127.218224		
10	911.661	11.661	21.078	244.551	44.551	36.007	939.045978		419.877627			
11	913.978	13.978	27.547	210.076	10.076	32.796		277.563572	158.422489			
								2256.250015	569.863402	978.300115	2544.686728	
								1686.386613			1686.386613	
									1/2 = 843.1933065			
4	-152 935.056	-152,900 35.056	21.027 20.915	-36 246.083	-36,240 6.083	21.304 22.234	129.280112	127.225945		779.435104		
5	888 932.576	32.688 32.576	24.730 24.793	264.855 266.785	26.855 26.785	18.367 19.278	664.080505			628.000128		
9	326 910.263	10.326 10.263	21.027 20.915	264.426 265.361	24.426 25.361	22.304 22.234	413.605502					
			24.730			18.363	530.425315		228.187542			
10	911.661	11.661	24.793	244.551	4.551	19.278	1152.999152	112.882913	224.900758			
							1194.505820	200.453471	452.988300	1407.435732		
							954.446932			954.446932		
							912.506181		1/2 = 468.63091	477.223466		





# 面積計算書

工  
区

2

ブ  
ロ  
ック

9

計  
算  
者



精  
算  
者

監  
査  
者

備  
考

福島 181-200

保2-9-1  
未

点	①	②	③	④	⑤	⑥	③	×	⑤	②	×	⑥
	X	X-(定数)	X <sub>n-1</sub> -X <sub>n+1</sub>	Y	Y-(定数)	Y <sub>n-1</sub> -Y <sub>n+1</sub>	+	-	+	-		
5	-152 932576	-152,900 32.576	20.253	36 266.785	-36,260 6.785	18.629			137.116605			606.858304
6	930516	30.516	15.434	283.990	23.990	20.973	370.261660					640.012068
14	917.142	17.142	21.858	281.758	27.758	5.254	606.731364					90.064068
K.18	908.658	8.658	6.877	287.244	27.244	22.397	201.159476			173.913226		
9	910.263	10.263	23.918	265.361	5.361	22.459			128.221378	230.496717		
							1178.165500		265.641003	421.407743		1336.931140
							912.521477					912.521477
									1/2 = 156.7627185			
7	-152 930.194	-152,900 30.194	11.112	36 286.675	-36,280 6.675	0.780			74.172600			23.551320
K.17	929.709	29.709	11.597	290.722	10.722	3.267	124.343034					97.059303
8	918.597	18.597	0.485	289.942	9.942	4.047			1821870	75.262059		
							121.343034		78.994470	75.262059		120.610623
							45.349564					45.349564
									1/2 = 22.674292			

(地区外布)





# 面積計算書

工区

2

ブロック

7

計算者



精算者



備考

陽坊工. 水路

点	①	②	③	④	⑤	⑥	③	×	⑤	②	×	⑥
	X	X-(定数)	X <sub>n-1</sub> -X <sub>n+1</sub>	Y	Y-(定数)	Y <sub>n-1</sub> -Y <sub>n+1</sub>	+		-	+		-
I	-152, 916.507	-152,910 6.507	3.125	-36, 172.430	-36,170 2.430	2.323			7.593750	15.115761		
1	919.431	9.431	0.201	173.101	3.101	2.994	0.623301					28.236414
13	916.306	6.306	2.924	175.424	5.424	0.671	15.859776			4.731326		
							16.483077	7.593750	19.347087	28.236414		
							8.889327					8.889327
									1/2 = 4.4446635			
6	-152, 930.516	-152,900 30.516	13.052	-36, 283.990	-36,280 3.990	1.083			52.077480	33.048928		
7	930.194	30.194	11.919	286.675	6.675	5.952	7.559325					17.7714688
8	918.597	18.597	21.536	289.942	9.942	2.569	21.4110912					47.775693
k.18	908.658	8.658	1.455	289.244	9.244	2.184	13.450020			18.909072		
14	917.142	17.142	21.858	287.758	7.758	5.254		119.574364	90.064068			
							307.120257	221.651844	142.021968	227.490381		
							85.468413					85.468413
									1/2 = 42.7342065			

地区外分

