

**BLOCK NO. 20-1**

**街区計算**

街区略図

工区

2

ブロック

20-1

記入者

点検者

$X = 152645326$

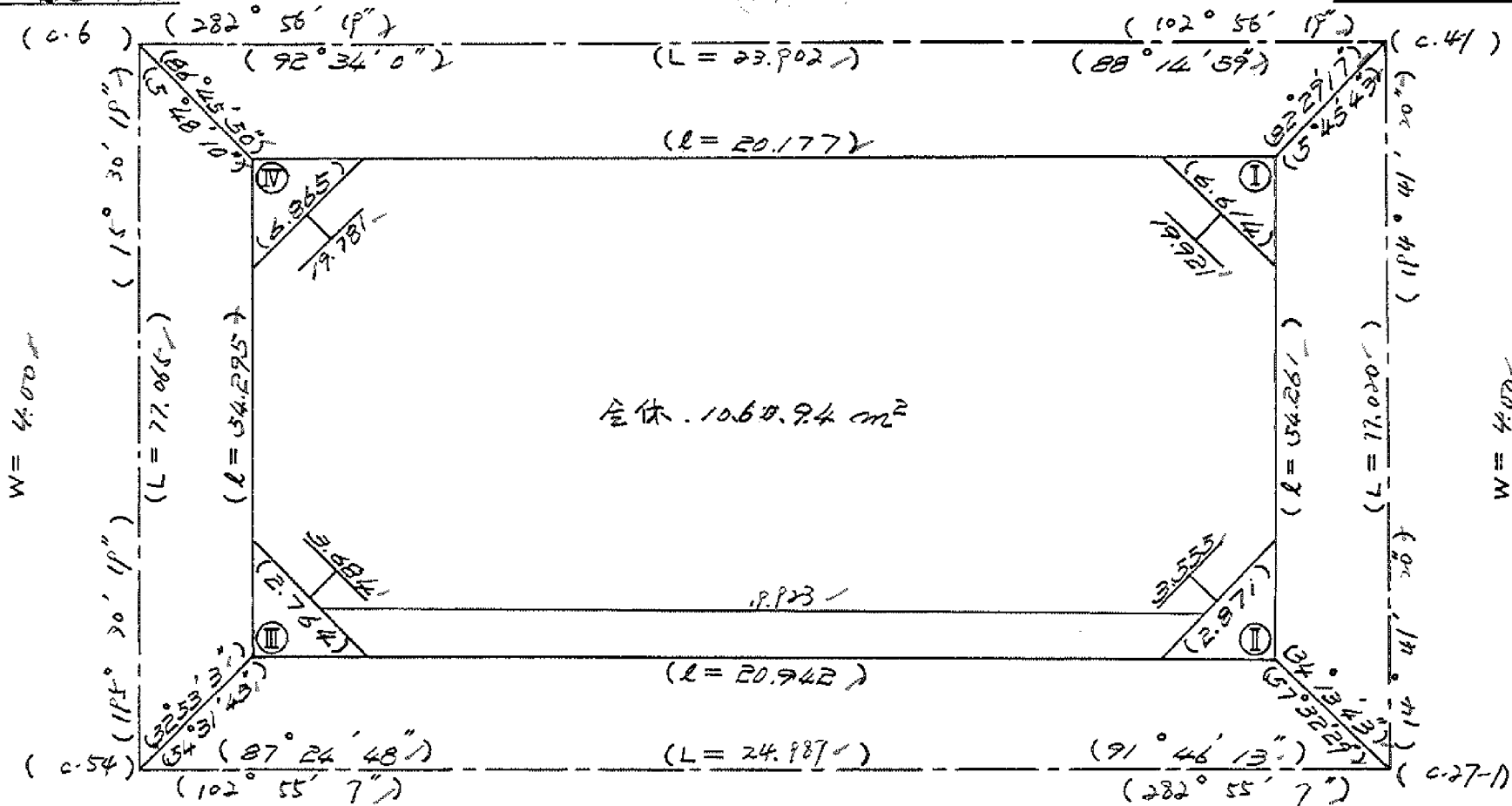
$Y = 364152971$

$W = 39.50$

(19.5)

$X = 152650675$

$Y = 363720061$



全体 10.60.94 m<sup>2</sup>

$X = 152719592$

$Y = 36435891$

$W = 6.00$

$X = 152725178$

$Y = 36411536$

# 面積計算書

工区

2

ブロック

20-1

計算者



精算者



備考

全休

点	①	②	③	④	⑤	⑥	③ ×	⑤	② ×	⑥
	X	X-(定数)	X <sub>n-1</sub> -X <sub>n+1</sub>	Y	Y-(定数)	Y <sub>n-1</sub> -Y <sub>n+1</sub>	+	-	+	-
I	-152. 669.340	-152.660 9.340	+57.004	-36. 398.966	-3.6.390 8.966	-5.906			511.097864	55.162040
II	721.828	61.827	+47.806	412.725	22.725	+34.171			1086.391350	2112.724588
III	717.146	57.146	-57.004	433.137	43.137	+5.906	2458.981548			337.504276
IV	664.824	4.824	-47.806	418.631	28.631	-34.171	1368.733586		164.840904	
							3827.715134	597.489214	220.002944	2450.229864
							2230.225920			2230.225920
							$\frac{1}{2} = 1115.112960$			
							$1115.11 - (11.27 + 1.99 + 1.99 + 11.26 + 27.66) = 1066.94$			

# 面地計算

画地略図

工区

E

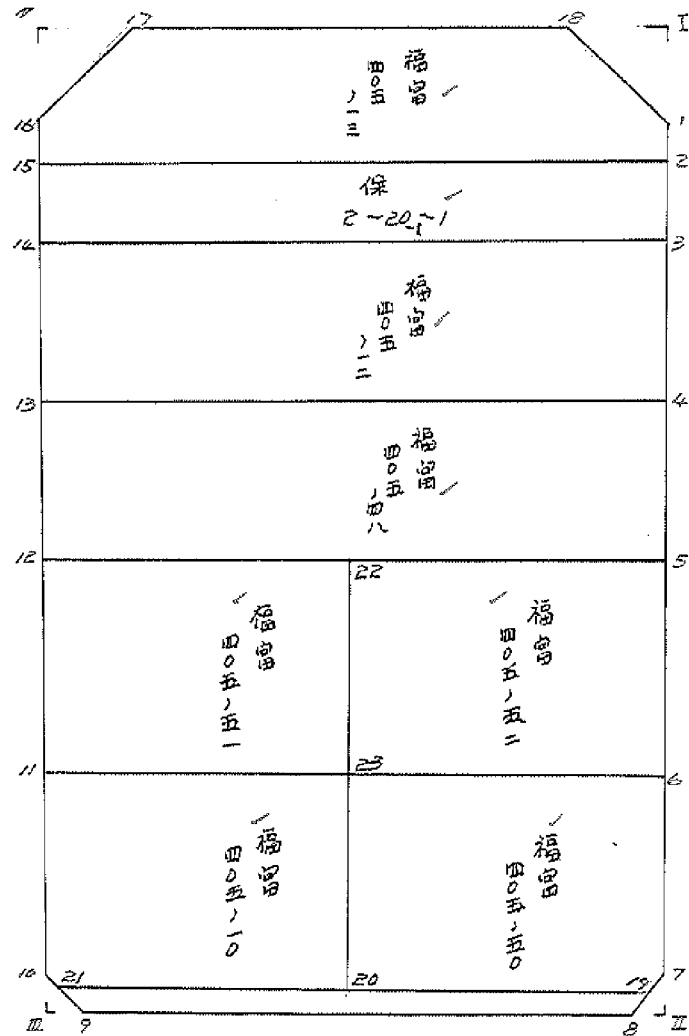
ブロック

20-1

記入者



点検者



# 面積計算書

工区

2

ブロック

20-1

計算者



計算者



備考

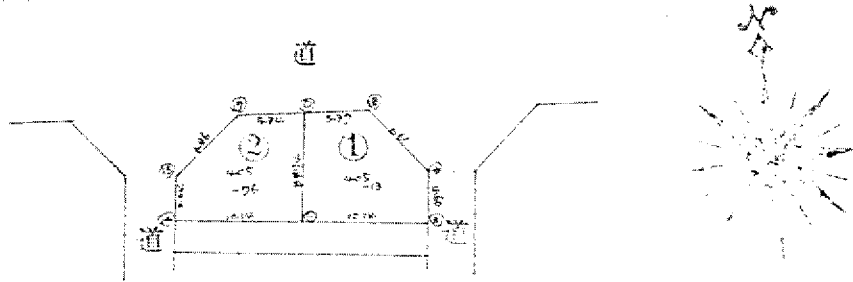
福富 405-13  
保 2-20-1

点	①	②	③	④	⑤	⑥	③ ×	⑤	② ×	⑥	
	X	X-(定数)	X <sub>n-1</sub> -X <sub>n+1</sub>	Y	Y-(定数)	Y <sub>n-1</sub> -Y <sub>n+1</sub>	+	-	+	-	
1	<del>672.935</del>	<del>13.935</del>	<del>+10.110</del>	<del>400.170</del>	<del>0.170</del>	<del>-2.257</del>		<del>1.718700</del>	<del>31.451295</del>		
2	678.387	18.387	-1.020	401.338	1.338	+20.704	1.364760			380.684448	
15	672.915	12.915	-8.986	420.874	20.874	+18.562	187.573764			239.728230	
16	669.401	9.401	-7.028	419.900	19.900	-6.872	139.857200		64.603672		
17	665.887	5.887	-1.124	414.002	14.002	-16.305	15.738248		95.987535		
18	668.277	8.277	+8.048	403.595	3.595	-13.832		28.932560	114.487464		
								344.533972	30.651260	306.529966	620.412678
								313.882712			313.882712
								$\frac{1}{2} = 156.941356$			
2	<del>678.387</del>	<del>8.387</del>	<del>+8.073</del>	<del>401.338</del>	<del>1.338</del>	<del>-18.855</del>		<del>10.801674</del>	<del>158.136885</del>		
3	680.988	10.988	-2.955	403.019	2.019	+20.234	5.966145			222.331192	
14	675.432	5.432	-8.073	421.572	21.572	+18.855	174.150756			102.420360	
15	672.915	2.915	+2.955	420.874	20.874	-20.234		61.682670	58.982110		
								180.116901	72.484364	217.118995	324.751552
								107.632557			107.632557
								53.8162785			

分筆後の座標なし

② 205~276

測点	X	Y	緯距 (d <sub>x</sub> )	經距 (d <sub>y</sub> )	全緯距 (d <sub>x</sub> )	全經距 (d <sub>y</sub> )	$y_{n-1} - y_n$	$x_n (y_{n-1} - y_n)$
17	152.665.087	36.414.002	0	0	0	0	1.102	0
16	152.667.401	36.417.900	2.514	5.878	2.514	5.878	-6.872	-24.148208
15	152.672.915	36.420.874	2.514	0.774	7.028	6.872	8.771	21.783148
C	152.675.650	36.411.109	2.735	-9.765	9.762	-2.893	12.076	117.897988
D	152.667.082	36.408.798	-8.568	-2.711	1.195	-5.204	-2.893	-3.457135
			-1.195	5.204				152.075793
							地積	76.0378965



① 205~17

測点	X	Y	緯距	經距	全緯距 (d <sub>x</sub> )	全經距 (d <sub>y</sub> )	$y_{n-1} - y_n$	$x_n (y_{n-1} - y_n)$
D	152.667.082	36.408.798	0	0	0	0	-7.514	0
C	152.675.650	36.411.109	8.568	2.711	8.568	2.711	7.460	63.917280
2	152.676.387	36.401.338	2.737	-9.771	11.305	-7.460	10.939	123.665.375
1	152.673.935	36.400.170	-4.452	-1.168	6.857	-8.628	-2.257	-15.467221
16	152.668.277	36.403.575	-5.658	3.425	1.195	-5.207	-8.628	-10.310460
			-1.195	5.203				161.804994
							地積	80.702497

計 156.7403935

# 面積計算書

工区

2

ブロック

20-1

計算者



精算者



備考

福富 405-12

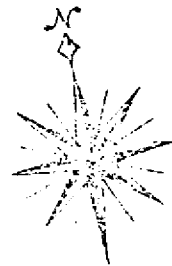
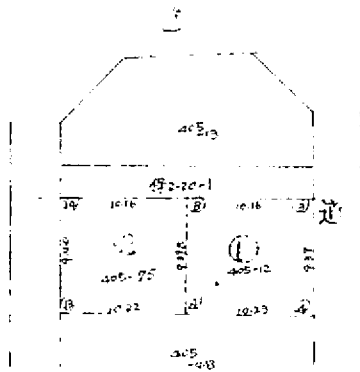
福富 405-48

点	①	②	③	④	⑤	⑥	③	×	⑤	②	×	⑥
	X	X-(定数)	X <sub>n-1</sub> -X <sub>n+1</sub>	Y	Y-(定数)	Y <sub>n-1</sub> -Y <sub>n+1</sub>	+		-	+		-
<del>3</del>	<del>680.988</del>	<del>10.988</del>	<del>+14.642</del>	<del>402.019</del>	<del>2.019</del>	<del>-17.171</del>			<del>29.562198</del>	<del>188.674948</del>		
4	690.074	20.074	+3.507	404.401	4.401	+22.065			15.434307			442.932810
13	684.495	14.495	-14.642	424.084	24.084	+17.171	352.637928					248.893645
14	675.432	5.432	-3.507	421.572	21.572	-22.065	75.653004			119.857080		
							428.290932		44.996505	308.532028		691.826455
							383.294427					383.294427
							191.6472135					
<del>4</del>	<del>690.074</del>	<del>10.074</del>	<del>+14.717</del>	<del>404.401</del>	<del>4.401</del>	<del>-17.288</del>			<del>64.769517</del>	<del>174.159312</del>		
5	699.212	19.212	+3.483	406.796	6.796	+22.196			23.670468			426.429552
12	693.557	13.557	-14.717	426.597	26.597	+17.288	391.428049					234.373416
13	684.495	4.495	-3.483	424.084	24.084	-22.196	83.884572			99.771020		
							473.312621		88.439985	273.930332		660.802968
							386.872636					386.872636
							1/2 = 193.436318					



2 405~75

測点	X	Y	緯距 (d <sub>x</sub> )	經距 (d <sub>y</sub> )	合緯距 (K) 緯距總和	合經距 (H) 經距總和	$y_{n+1} - y_{n-1}$	$x_n (y_{n+1} - y_{n-1})$
14	162.675.422	36.421.572	0	0	0	0	-12.285	0
13	152.684.484	36.424.084	9.063	-2.512	9.063	-2.512	7.321	66.350223
A	152.687.282	36.414.251	9.287	-9.932	11.850	-7.321	12.285	145.57725
B	152.678.209	36.411.799	-9.079	-2.452	2.777	-7.729	-7.321	-25.310417
			-2.777	9.729				191.677056
							地積 $\frac{1}{2}$	95.778528



1 405~74

測点	X	Y	緯距 (d <sub>x</sub> )	經距 (d <sub>y</sub> )	合緯距 (K) 緯距總和	合經距 (H) 經距總和	$y_{n+1} - y_{n-1}$	$x_n (y_{n+1} - y_{n-1})$
B	678.209	411.799	0	0	0	0	12.232	0
A	687.382	416.251	9.079	2.452	9.079	2.452	7.398	67.122054
4	690.074	404.401	2.792	-9.850	11.865	-7.398	12.232	145.132680
3	680.988	402.019	-9.086	-2.382	2.777	-9.780	-7.398	20.559042
			-2.777	9.780				191.695692
							地積 $\frac{1}{2}$	95.847846

計 191.646374

# 面積計算書

工区

2

ブロック

20-1

計算者



精算者



備考

福富 405-52  
福富 405-50

点	①	②	③	④	⑤	⑥	③ × ⑤		② × ⑥	
	X	X-(定数)	X <sub>n-1</sub> -X <sub>n+1</sub>	Y	Y-(定数)	Y <sub>n-1</sub> -Y <sub>n+1</sub>	+	-	+	-
	-152	-152,600		-36	-36,400					
5	699.212	99.212	+ 12.561	406.798	6.796	- 7.164		92.160556-	710.754768-	
6	709.925	109.925	+ 7.794	409.605	9.605	+ 12.910		74.861370-		1419.131750-
23	707.006	107.006	- 13.561	419.706	19.706	+ 7.164	267.233066-			766.590984-
22	696.364	96.364	- 7.794	416.769	16.769	- 12.910	130.697586-		1244.059240-	
							397.930652	167.021926	1954.814008	2185.722734
							230.908726			230.908726
							1/2 = 115.454363			
	-152	-152,600		-36	-36,400					
6	670.074	90.074	+ 12.887	404.401	4.401	- 7.488		56.715687-	674.674117-	
7	719.893	119.893	+ 30.190	412.218	12.218	+ 8.430		368.861420-		1010.697990-
19	720.264	120.264	- 1.901	412.831	12.831	+ 10.520	24.391731-			1265.177280-
20	717.992	117.992	- 13.258	422.739	22.739	+ 6.875	301.460404			811.195000
23	707.008	107.006	- 27.918	419.706	19.706	- 18.337	550.152108-		1962.169022-	
							876.004243	425.577107	2636.643136	3087.070270
							450.427136			450.427136
							1/2 = 225.213568			

# 面積計算書

工区

2

ブロック

20-1

計算者



計算者



備考

積算 405-50

点	①	②	③	④	⑤	⑥	③ ×	⑤	② ×	⑥	
	X	X-(定数)	X <sub>n-1</sub> -X <sub>n+1</sub>	Y	Y-(定数)	Y <sub>n-1</sub> -Y <sub>n+1</sub>	+	-	+	-	
6	<sup>-152</sup> 709.925	<sup>-152.700</sup> 9.925	+12.887	<sup>-36</sup> 409.605	<sup>-36.600</sup> 9.605	-7.488		123.779635	74.318600		
7	719.893	19.893	+10.339	412.218	12.218	+3.226		126.321902		64.174818	
19	720.264	20.264	-1.901	412.831	12.831	+10.520	24391731			213.177280	
20	717.992	17.992	-13.258	422.738	22.738	+6.875	201.460404			123.695000	
23	707.006	7.006	-8.067	419.706	19.706	-13.133	168.968302		92.009798		
							484.820637	250.101637	166.328198	401.047098	
							234.718900			234.718900	
							× 1/2 = 117.359450				

# 面積計算書

工  
区

2

ブ  
ロ  
ック

20-1

計  
算  
者



精  
算  
者



備  
考

福富 405-10

福富 405-51

点	①	②	③	④	⑤	⑥	③ ×	⑤	② ×	⑥
	X	X-(定数)	X <sub>n-1</sub> -X <sub>n+1</sub>	Y	Y-(定数)	Y <sub>n-1</sub> -Y <sub>n+1</sub>	+	-	+	-
	-152	-152.700		-36	-36.400					
28	707.006	7.006	+ 13.828	419.706	19.706	- 6.800			272.694588	47.640800
20	717.992	17.992	+ 8.804	422.738	22.738	+ 12.544			200.185352	225.691648
21	715.810	15.810	- 2.774	432.250	32.250	+ 9.865	89.461500			155.965650
10	715.218	15.218	- 11.646	432.603	32.603	- 2.712	279.694532			41.271216
11	704.164	4.164	- 8.212	429.538	29.538	- 12.897	242.566056			53.703100
							711.722094	472.679920	142.615124	381.657298
							239.042174			239.042174
								$\frac{1}{2} = 119.521087$		
22	696.384	96.384	+ 13.449	416.769	16.769	- 6.891			225.526281	664.044324
23	707.006	107.006	+ 7.800	419.706	19.706	+ 12.769			153.706800	1366359614
11	704.164	104.164	- 13.449	429.538	29.538	+ 6.891	397.256562			717.794124
12	693.557	93.557	- 7.800	426.597	26.597	- 12.769	207.456600			1194.629332
							604.713162	379.233081	1859.673657	2084.153732
							225.480031			225.480031
								$\frac{1}{2} = 112.7400405$		

# 面積計算書

工区

2

ブロック

20-1

計算者



精算者



備考

水路

点	①	②	③	④	⑤	⑥	③ ×	⑤	② ×	⑥
	X	X-(定数)	X <sub>n-1</sub> -X <sub>n+1</sub>	Y	Y-(定数)	Y <sub>n-1</sub> -Y <sub>n+1</sub>	+	-	+	-
19	-152 720.264	-152.710 10.264	+3.571	-36 412.831	-36.410 2.831	-17.576		15.771501	180.4000064	
8	721.381	11.381	-2.671	414.674	4.674	+18.357	12.48454			208.921017
9	717.593	7.593	-3.371	431.188	21.188	+17.576	118.038348			123.454568
21	715.810	5.810	+2.671	432.250	22.250	-18.357		59.429750	106.654170	
							138.522602	75.201251	287.054234	342.375585
							55.321351			55.321351
							1/2=27.6606755			

# 面積計算書

工  
区

2

ブ  
ロ  
ック

20-1

計  
算  
者



精  
算  
者



備  
考

隅田 I . II

点	①	②	③	④	⑤	⑥	③ ×	⑤	② ×	⑥
	X	X-(定数)	X <sub>n-1</sub> -X <sub>n+1</sub>	Y	Y-(定数)	Y <sub>n-1</sub> -Y <sub>n+1</sub>	+	-	+	-
I	-152 669 340	-152.660 9.340	+ 3.658	-36 398 966	-36.390 8.966	-3.425		30.729628	31.989500	
1	673 935	13.935	- 1.063	400 170	10.170	+ 4.629	10.810710			64.505115
18	668 277	8.277	- 4.595	403 595	13.595	- 1.204	62.469025		9.965508	
							73.279733	30.729628	41.9.33008	64.505115
							22.550107			22.550107
							1/2 = 11.2750535			
7	-152 719 893	-152.710 9.893	+ 0.447	-36 412 218	-36.410 2.218	- 1.949		0.991446	19.281457	
II	721 828	11.828	+ 1.488	412 725	2.725	+ 2.456		4.054800		29.049568
8	721 381	11.381	- 1.935	414 674	4.674	- 0.307	9.044190		5.770.167	
							9.044190	3.046246	23.031624	29.049568
							3.997944			3.997944
							1/2 = 1.998972			

# 面積計算書

工区 2

ブロック 20-1

計算者



精算者



備考

明切正下

点	①	②	③	④	⑤	⑥	③ ×	⑤	② ×	⑥
	X	X-(定数)	X <sub>n-1</sub> -X <sub>n+1</sub>	Y	Y-(定数)	Y <sub>n-1</sub> -Y <sub>n+1</sub>	+	-	+	-
9	-152 717.593	-152.710 7.593	+1.928	-36 431.188	-36.430 1.188	+0.334		2.290464		4.054662
Ⅲ	717.146	7.146	-2.375	433.137	3.137	+1.415	7.450375			10.111590
10	715.218	5.218	+0.447	432.603	2.603	-1.949		1.163541	10.169882	
							7.450375	3.454005	10.169882	14.166252
							3.996370			3.996370
							½=1.998185			
16	-152 669.401	-152.660 9.401	-1.063	-36 419.900	-36.410 9.900	+4.629	10.523700			43.517229
Ⅳ	664.824	4.824	-3.514	418.631	8.631	-3.898	30.329334		28.451952	
17	665.887	5.887	+4.577	414.002	4.002	+1.269		18.317154		7.470603
							50.853034	18.317154	28.451952	50.987832
							22.535880			22.535880
							½=11.267940			

計年  
月  
算日

計  
算  
者



檢  
查  
者



B.NO. 20-1

各筆面積計算書

地番	算式	隅切	地積	摘要
	福富 405-13		156 84	
	保 2-20-1		53 81	
	福富 405-12		191 64	
	福富 405-48		192 43	
	福富 405-52		115 45	
	福富 405-50		117 45	
	福富 405-10		118 52	
	福富 405-51		112 74	
	水路	27 66		
	隅切 I	11 27		
	" II	1 99		
	" III	1 99		
	" IV	11 26		
		54 17	1060 88	
	計		1115 05	
	全		1115 11	
	差		0 06	