

BLOCK NO. 32

街区計算

街区略図

工区

エ

ブロック

32

記入者



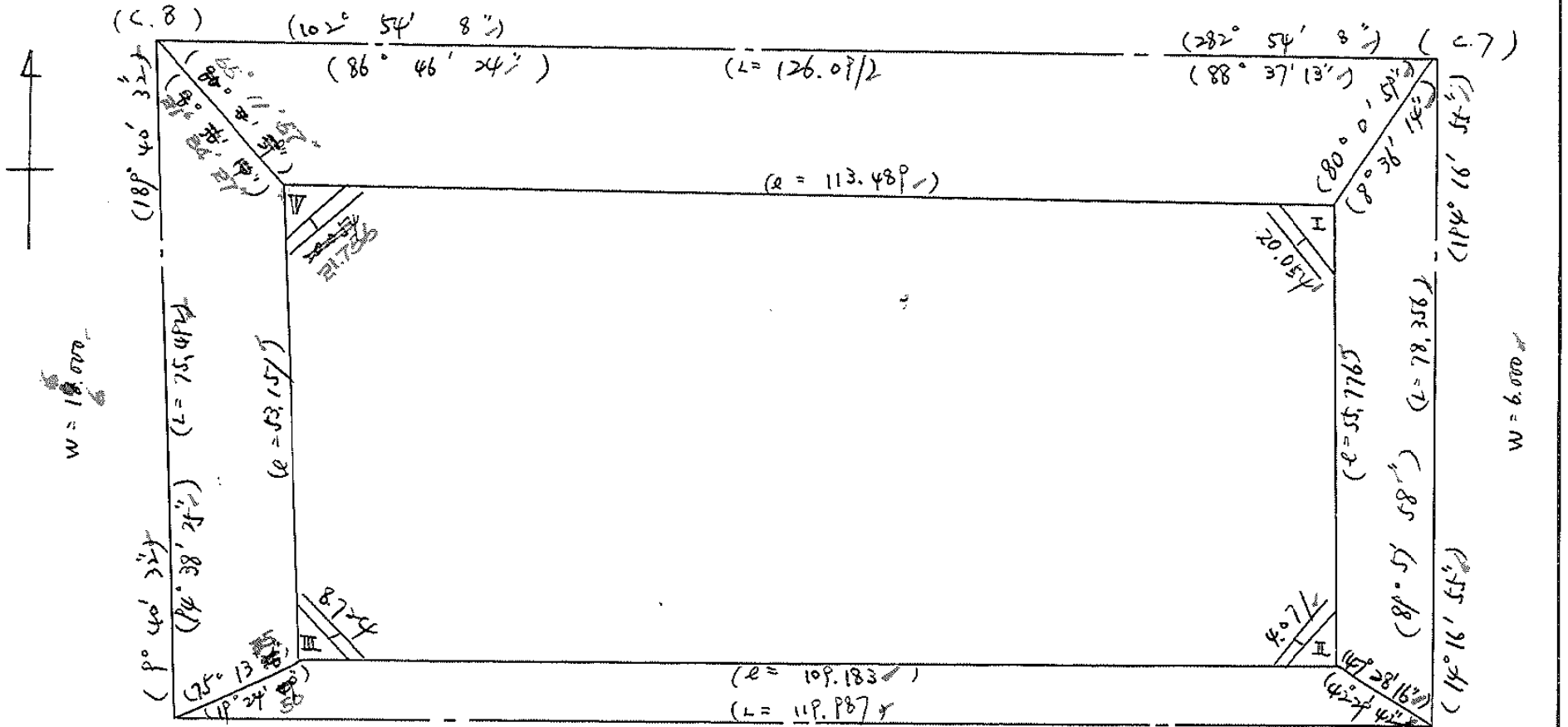
点検者



$X = -152,578.330$
 $Y = -36,707.762$

$W = 39.500$

$X = -152,606.485$
 $Y = -36,584.854$



$X = -152,652.750$
 $Y = -36,720.445$

$W = 5.500$

$X = -152,682,419$
 $Y = -36,604.184$

面積計算書

工区

ノ

ブロック

33

計算者

精算者



備考

合算

点	①	②	③	④	⑤	⑥	③ × ⑤		② × ⑥		
	X	X - (定数)	X _{n-1} - X _{n+1}	Y	Y - (定数)	Y _{n-1} - Y _{n+1}	+	-	+	-	
I	-152,624.960	-152,500 124.960	+79.394	-36,592.653	-36,500 92.653	-96.264					
II	-152,679.012	179.012	+27.054	-36,606.412	106.412	+119.551					
III	-152,652.014	152.014	-79.394	-36,712.204	212.204	+96.264	16847.724	376		14724.624096	
IV	-152,599.618	99.618	-27.054	-36,703.276	203.276	-119.551	5499.428	906		11909.421518	
							22347.153	280	10234.962570	24013.556958	36125.747708
							12112.90750				12112.90750
											$\frac{1}{2} = 6056.095375$

地 地 計 算

画地略図

工区

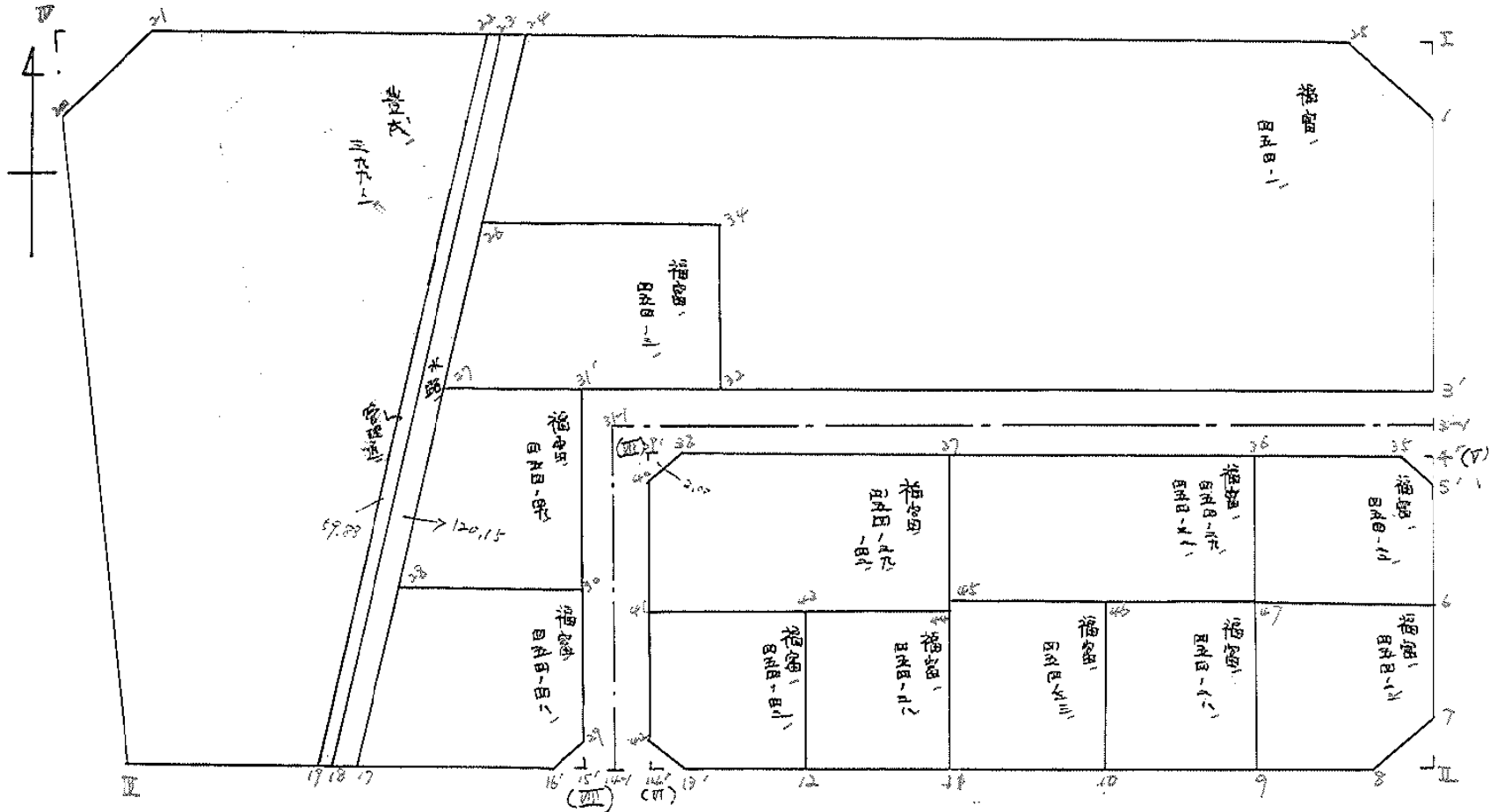
エ

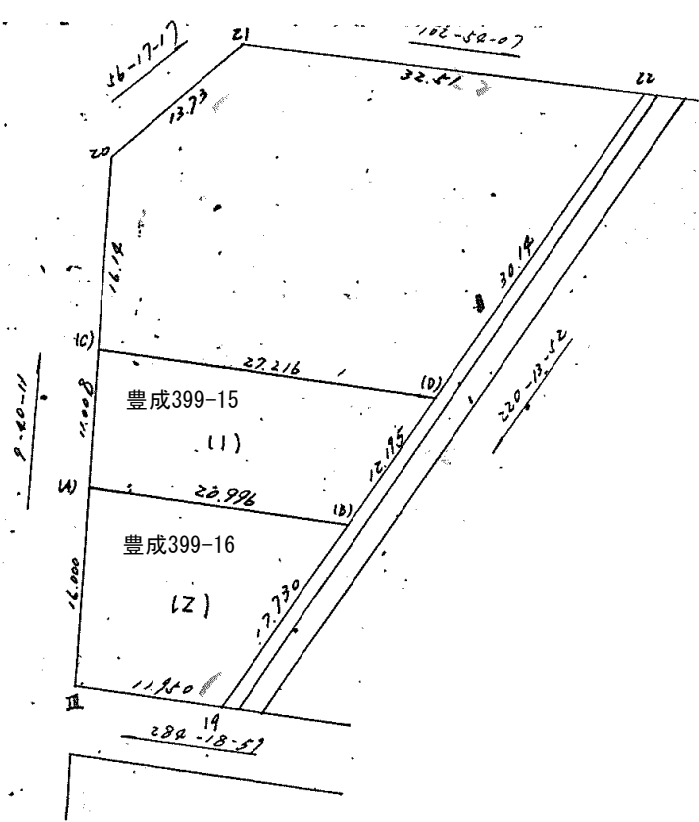
ブロック

32

記入者

点検者





面積計算書

工区

2

ブロック

32

計算者



計算者



備考

福富

454-1
454-22

点	①	②	③	④	⑤	⑥	③	⑤	②	⑥	
	X	X-(定数)	X _{n-1} -X _{n+1}	Y	Y-(定数)	Y _{n-1} -Y _{n+1}	+	-	+	-	
1	-152, 633.440	-152.600.000 - 33,440	+ 29,7702	-36, 594.811	-36.590.000 - 4,811	- 1,466		142,896322	49,023040		
31	652, 708	- 52,708	+ 4,531	599, 716	- 9,716	+ 62,784		44,023196		3309,219072	
32	637, 971	- 37,971	- 29,080	657, 595	- 67,595	+ 54,827	1830,472600			2081,836017	
34	625, 628	- 25,628	- 16,049	654, 543	- 64,543	+ 11,150	1035,850607			285,752200	
26	621, 922	- 21,922	- 15,763	668, 745	- 78,745	+ 4,002	1241,257435			87,731844	
24	609, 865	- 9,865	+ 1,084	658, 545	- 68,545	- 87,563		74,302780	666,508995		
25	623, 006	- 23,006	+ 23,575	601, 182	- 11,182	- 63,934		263,415650	1466,264404		
								4107,580642	524,837948	2181,796439	5764,539133
								3582,742694		3582,742694	
								Y ₂ = 1791,371347			
51	-152, 658.523	-152, 600 8, 523	+ 10,883	-36, 601.196	-36, 600 1, 196	+ 0,707		13,016068		6,025761	
6	666, 974	16, 974	+ 4,933	603, 348	3, 348	+ 16,908		16, 415684		270,022392	
47	663, 456	13, 456	- 13,873	617, 104	17, 104	+ 11,037	237,283772			148,513872	
36	653, 101	3, 101	- 7,364	614, 385	14, 385	- 14, 463	104, 344524		44,849763		
35	656, 091	6, 091	+ 4,422	602, 641	2, 641	- 13,189		14,319402	80,334129		
								343,229317	43,051244	124,183967	424,562024
								299,378063		299,378063	

面積計算書

工区

2

ブロック

32

計算者



精算者



備考

福富

454-23

454-28

点	① X	② X-(定数)	③ X _{n-1} -X _{n+1}	④ Y	⑤ Y-(定数)	⑥ Y _{n-1} -Y _{n+1}	③ ×	⑤	② ×	⑥
							+	-	+	-
6	-152, 666.974	-152.663 3.974	+ 12.649	-36, 609.748	-36.603 0.348	- 11.432		4.401852	45.430768	
7	676.105	13.105	+ 11.296	605.672	- 2.672	+ 5.971		30.182912		78.249955
8	678.270	15.270	- 0.607	609.319	- 6.319	+ 14.511	3.835633			221.582970
9	675.498	12.498	- 14.814	620.183	12.183	+ 7.785	254.548962			97.296930
47	663.456	-0.456	- 8.524	617.104	14.104	- 16.835	120.222496		7.676760	
								344.022327	344.022327	
								1/2 = 172.011164		
9	-152, 675.498	-152.660 15.498	+ 8.701	-36, 620.183	-36.617 3.183	+ 16.171		27.695283		250.618158
10	672.157	12.157	- 15.341	633.275	16.275	+ 9.969	249.674775			121.193133
46	660.157	0.157	- 8.701	630.157	13.152	- 16.171	114.435552		2.538847	
47	663.456	3.456	+ 15.341	617.104	0.104	- 9.969		1.595464	34.452864	
								334.819580	334.819580	
								1/2 = 167.409790		

面積計算書

工区

2

ブロック

32

計算者



精算者



備考

福富 454-33
454-38

点	①	②	③	④	⑤	⑥	③	×	⑤	②	×	⑥
	X	X-(定数)	X _{n-1} -X _{n+1}	Y	Y-(定数)	Y _{n-1} -Y _{n+1}	+	-	+	-		
10	-152, 672,157	-152.656.000 - 16157	+ 8,657	-36, 673,775	-36.630.000 - 3,275	+ 16,221			28,351675			262,082,697
11	668,814	- 12,814	- 15,322	646,373	- 16,373	+ 10,020	250,867,106					128,396,280
45	656,835	- 0,835	- 8,657	647,795	- 13,295	- 16,221	115,094,815					13,544,535
46	660,157	- 4,157	+ 15,322	630,152	- 0,152	- 10,020			2,328,944	41,653,140		
									365,961,921	30,680,619	58,197,675	390,428,907
									335,281,302			335,281,302
									√2 = 167,640,651			
11	-152, 668,814	-152.654.000 - 14,814	+ 7,963	-36, 646,373	-36.643.000 - 3,373	+ 16,025			26,859,199			237,394,350
12	665,466	- 11,466	- 14,602	659,487	- 16,492	+ 10,227	240,816,184					177,262,782
43	654,212	- 0,212	- 7,963	656,600	- 13,600	- 16,025	108,296,800					3,397,300
44	657,503	- 3,503	+ 14,602	643,467	- 0,467	- 10,227			618,191,34	35,825,181		
									349,112,984	33,678,333	39,222,481	354,657,132
									315,434,651			315,434,651
									√2 = 157,719,3255			

面積計算書

工区

2

ブロック

32

計算者



精算者



備考

福富 454-43

454-39, 42

点	① X	② X-(定数)	③ X _{n-1} -X _{n+1}	④ Y	⑤ Y-(定数)	⑥ Y _{n-1} -Y _{n+1}	③ ×	⑤	② ×	⑥
							+	-	+	-
12	-152, 665.466	-152-650.000 - 15.466	+ 8.400	-36, 659.492	-36.656.000 - 3.492	+ 14.076		29.332800		217.699416
13'	662.612	- 12.612	- 5.286	670.676	- 14.656	+ 12.622	77.577336			159.188664
42	660.180	- 10.180	- 11.690	672.114	- 16.114	- 0.944	188.372660		9.609920	
41	650.922	- 0.922	- 5.968	669.732	- 13.732	- 15.514	81.952576		14.303908	
43	654.212	- 4.212	+ 14.544	656.600	- 0.600	- 10.240		8726400	43.130880	
							347.902572	38.059200	67.044708	376.888080
							309.843372		309.843372	
								1/2=154.921686		
41	-152, 650.922	-152.640.000 - 10.922	- 15.825	-36, 669.732	-36.640.000 - 29.732	+ 23.885	470.508900			260.871970
40	641.678	- 1.678	- 10.688	667.352	- 27.352	- 4.816	292.338176		8.081248	
38	640.234	- 0.234	+ 4.743	664.916	- 24.916	- 26.733		118.176588	6.255522	
37	646.421	- 6.421	+ 17.269	640.619	- 0.619	- 21.449		10.689511	137.724029	
44	657.503	- 17.503	+ 4.501	647.467	- 3.467	+ 29.113		15.004967		509.564839
							762.84076	144.471066	152.060799	770.436809
							618.376010		618.376010	
								1/2=309.188005		

面積計算書

工区

2

ブロック

32

計算者



精算者



備考

福富 454-2P, 3P
1, 454-4

点	①	②	③	④	⑤	⑥	③ × ⑤	② × ⑥
	X	X-(定数)	X _{n-1} -X _{n+1}	Y	Y-(定数)	Y _{n-1} -Y _{n+1}	+ -	+ -
37	-152, 646.421	-152.640 5.421	-3.734	-36, 640.619	-36.610 30.619	-28.910	114.331346	185.631110
36	653.101	13.101	+17.035	614.385	4.385	-23.515	74.698475	308.070015
47	663.456	23.456	+3.734	617.104	7.104	+28.910	26.526336	678.112960
45	656.835	16.835	-17.035	643.95	33.295	+23.515	567.180325	395.875025
							681.5116710	1073.987985
							580.286860	380.286860
							1/2 = 290.143430	
16	-152, 660.634	-152.640 20.634	-3.398	-36, 678.427	-36.670 8.427	+21.408	28.634946	441.732672
17	655.793	15.793	-14.684	697.398	27.398	+10.644	402.312232	168.100692
28	645.950	5.950	-6.101	689.071	19.071	-23.852	116.352171	141.919400
30	649.692	9.692	+13.241	673.546	3.546	-13.081	46.952586	126.781052
29	659.191	19.191	+10.942	675.990	5.990	+4.881	45.542580	93.671271
							347.299349	703.504635
							112.495166	268.700452
							434.804183	434.804183
							1/2 = 217.402091	

面積計算書

工区

2

ブロック

22

計算者



精算者



備考

福岡

454-49

454-48

点	① X	② X-(定数)	③ X _{n-1} -X _{n-2}	④ Y	⑤ Y-(定数)	⑥ Y _{n-1} -Y _{n-2}	③ × ⑤	⑥ × ⑤
27	-152, 632.782	-152.630.000 - 2.792	- 11.053	-36, 677.940	-36.660.000 - 17.940	- 25.324	198.290820	70.764608
31'	634.881	- 4.881	+ 16.900	669.734	- 3.734	- 4.394		63.104600
30	649.692	- 19.692	+ 11.053	673.546	- 13.546	+ 25.324	149.723938	498.680208
28	645.934	- 15.934	- 16.900	689.058	- 29.058	+ 4.394	491.080200	70.013996
							689.371020	212.828538
							476.542482	476.542482
							1/2 = 238.271241	
30	-152, 649.692	-152.640.000 - 9.692	+ 13.257	-36, 673.546	-36.670.000 - 3.546	- 13.068	47.009322	126.655056
29	659.191	- 19.191	+ 10.942	675.990	- 5.990	+ 4.801	65.542580	99.671271
16'	660.634	- 20.634	- 3.398	678.427	- 8.427	+ 21.408	28.634946	441.732672
17	655.793	- 15.793	- 14.700	697.398	- 27.398	+ 10.631	402.750600	167.895383
28	645.934	- 5.934	- 6.101	689.058	- 19.058	- 23.852	116.272958	141.537768
							547.658404	112.551902
							288.192824	863.299328
							435.106502	435.106502
							1/2 = 217.553251	

面積計算書

工
区

N

ブ
ロ
ック

32

計
算
者

精
算
者

備
考

福富 454-47

点	①	②	③	④	⑤	⑥	③ × ⑤		② × ⑥	
	X	X-(定数)	X _{n-1} -X _{n+1}	Y	Y-(定数)	Y _{n-1} -Y _{n+1}	+	-	+	-
	-152	-152.630		-36	-36.660					
27	632.772	2.772	11.053	677.940	17.940	19.324	198.290820		53.952608	
31'	634.891	4.881 ⁺	16.900	669.734	9.734	4.394		164.504600	21.447114	
30	649.692	19.692 ⁺	11.053	673.546	13.546	19.324		149.723938		380.528208
28	645.934	15.934	16.900	689.058	29.058 ⁺	4.394	491.080200			70.013996
							689.371020	314.228538	75.399722	450.542284
							375.142482			375.142482
								1/2 = 187.571241		

面積計算書

工区

2

ブロック

32

計算者



計算者



備考

測量
簿記

3PP-1
454-3

点	①	②	③	④	⑤	⑥	③ ×	⑤	② ×	⑥
	X	X-(定数)	X _{n-1} -X _{n+1}	Y	Y-(定数)	Y _{n-1} -Y _{n+1}	+	-	+	-
21	-152,601.851	-152,601.000 -0.851	-0.364	-36,693.528	-36,666.000 -32.528	-43.126	11,840.92		36,700.226	
22	609.112	-8.112	+53.118	661.830	-0.830	+7.097		44,087.940		57,570.864
19	654.969	-53.969	+42.902	707.625	-39.625	+50.374		1699.99750		2718,634406
Ⅲ	652.014	-51.014	-45.493	712.204	-51.204	+4.331	2329.423572			220.941634
20	609.476	-8.476	-50.163	704.956	-43.956	-18.676	2204.964828		158,297.776	
							4546,228592	1144,079690	194,998002	2997,146904
							+2802,148902		-2802,148902	
							$\sqrt{2} = 1401.0740451$			
									分筆あり	
26	-152,621.922	-152,620.000 -1.922	-7.164	-36,668.745	-36,650.000 -18.745	-23.397	134,325000 134,289180		44,969074	
34	625.628	-5.628	+16.049	654.543	-4.543	-11.150		62,780340	72,910607	62,752200
32	637.971	-17.971	+7.164	657.595	-7.595	+23.397			54,410580	420,467487
27	632.792	-12.792	-16.049	677.940	-27.940	+11.150	448,409060			102,674760 142,630800
							582,734060 582,698240	127,321187	107,749374 107,721234	563,162267 563,098287
							455,412873 455,377053		455,377053	455,412873
								227,7064365		$\sqrt{2} = 227,6885265$

NO.	NAME	CODE	X	Y	D X	D Y	X * DY	Y * DX
1	A		-152636.241	-36709.517	-16.044	18.494	-2822854.641054	588967.490748
2	C		-152625.389	-36707.667	-4.119	-28.221	4307241.102969	151198.880373
3	D		-152632.122	-36681.296	16.044	-18.494	2822778.464268	-588514.713024
4	B		-152641.433	-36689.173	4.119	28.221	-4307693.880693	-151122.703587

7"ウケイ -528.954510 528.954510

11"イ メソキ 528.954510

メソキ 264.477255

NO.	NAME	CODE	X	Y	D X	D Y	X * DY	Y * DX
1	Ⅰ		-152654.969	-36700.625	10.581	23.031	-3515796.591039	-388329.313125
2	Ⅱ		-152652.014	-36712.204	-18.728	8.892	-1357381.708488	687546.156512
3	A		-152636.241	-36709.517	-10.581	-23.031	3515365.266471	388423.399377
4	B		-152641.433	-36689.173	18.728	-8.892	1357287.622236	-687114.831944

コウケイ -525.410820 525.410820

ハイ メロキ 525.410820

メロキ 262.705410

面積計算書

工区

2

ブロック

32

計算者

精算者



備考

水路

点	①	②	③	④	⑤	⑥	③ × ⑤	② × ⑥
	X	X-(定数)	X _{n-1} -X _{n+1}	Y	Y-(定数)	Y _{n-1} -Y _{n+1}	+ -	+ -
23	-152, 609.363	152,609.000 -0.363	-45.378	-36, 660.738	-36,658.000 -273.738	-41.005	1821034 +24.56345	14884815
24	609.865	-0.865	+46.430	658.545	-0.545	+36.664	25.304350	31710700 37.714.50
17	655.793	-46.793	+45.378	697.398	-39.398	+41.005	1787.802444	1918.746965
18	655.243	-46.243	-46.430	699.550	-41.550	-36.664	1929.166500	1685268380 168545375
							2053.41444 3053.715	1813.106794
							240304670 240123158	1710.153175 1710.23067
							180157335 180157335	1850457865 286306670 240123158
							1/2 180157335	

面積計算書

工区

2

ブロック

22

計算者



精算者



備考

22' 3P', 22' 1P' (道路)

点	①	②	③	④	⑤	⑥	③	⑤	②	⑥
	X	X-(定数)	X _{n-1} -X _{n+1}	Y	Y-(定数)	Y _{n-1} -Y _{n+1}	+	-	+	-
3P'	-152, 63P. 744	-152639, 0.741	+ 1.444	-36, 666.854	36.664, 2.854	+ 2.436		4.121176		1.805076
38	640. 234	1.234	- 1.937	664.916	0.916	- 0.498	1.774292		0.614532	
40	644. 678	2.678	+ 0.493	667.352	3.352	- 1.938		1.652536	5.189964	
							1.774292	5.773712	5.804496	1.805076
								3.999420	3.999420	
								1/2 1.999710 ^{m²}		
22	-152, 60P. 112	-152,60P. 000, 0.112	- 46.606	-36, 661.830	-36,660.000, 1.830	- 39.887	83.458990		4.467304	
23	60P. 363	0.363	+ 46.131	660.738	0.738	+ 37.720		34.064678		13.672360
18	655. 743	46.243	+ 46.606	699.550	39.550	+ 39.887		1803.717300		1804.494541
1P	654. 969	46.969	- 46.131	700.625	40.625	- 37.720	1874.071874		1733.950680	
							1947.530844	1837.761978	1720.418024	1848.186901
							119.768877		119.768877	
								1/2 = 59.8844385		

面積計算書

工区

2

ブロック

32

計算者



計算者



備考

福島 654-49
福屋 路

点	①	②	③	④	⑤	⑥	③ × ⑤	② × ⑥
	X	X-(定数)	X _{n-1} -X _{n+1}	Y	Y-(定数)	Y _{n-1} -Y _{n+1}	+	-
28	-152, 645.950	152,630 15,950	-	-36, 689.071	36,660 29,071	4,407	490,863,835	70,291,650
27	632.807	2,807	11,069	677.953	17,953	19,337	199,721,757	54,278,959
31'	634,881	4,881	+ 16,885	669,734	9,734	- 4,407	164,358,590	21,510,567
30	649.692	19,692	+ 11,069	673.546	13,546	19,337	149,940,674	380,784,204
							687,585,572	314,299,264
							375,286,328	375,286,328
							1/2 = 187,643,164	
3'	-152, 652,708	152,630 22,708	+ 21,704	-36, 599,716	36,590 9,716	69,031	210,876,064	1567,555,948
4'	656.585	26,585	12,967	600,703	10,703	+ 67,138	139,785,801	1784,863,730
39'	639.741	9,741	+ 5,532	666,854	76,854	+ 71,910	425,156,328	700,475,310
14'	662.117	32,117	+ 2,387	672.613	82,613	+ 9,635	1766,844,231	309,447,275
15'	661.128	31,128	- 27,236	676.489	86,489	- 2,879	2355,644,04	89,617,512
31'	634,881	4,881	- 8,420	669,734	79,734	- 76,773	671,360,280	374,729,013
							3165,760,485	240,287,6623
							762,883,862	2031,902,473
								2794,786,335
								762,883,862
							1/2 = 381,441,931	
							381.44 + (1.99 + 1.99 + 1.99 + 2.00)	
							= 389.41 m ²	

(2) 合計

面積計算書

工区

2

ブロック

32

計算者



精算者

備考

25印 I II

点	①	②	③	④	⑤	⑥	③	×	⑤	②	×	⑥
	X	X-(定数)	X _{n-1} -X _{n+1}	Y	Y-(定数)	Y _{n-1} -Y _{n+1}	+	-	+	-		
I	-152 624.960	152.620 2.960	+ 10.134	-36, 592.653	-36,590 2.653	- 6.371			27.681402	31.600160		
1	633.440	13.440	- 1.954	594.811	4.811	+ 8.529	9.400694					114.629760
25	623.006	3.006	- 8.480	601.182	11.182	- 2.158	94.823360			6.426948		
							104.224054	27.681402	38.087108	114.629760		
							76.542652					76.542652
												1/2 = 38.271326
II	-152, 679.012	152.676 3.012	+ 2.165	-36, 606.412	-36,605 1.412	+ 3.647			3.056980	10.984764		
8	678.270	2.270	- 2.907	609.719	4.319	- 0.740	12.555333			1.679800		
7	676.105	0.105	+ 0.742	605.672	0.672	- 2.907			0.498624	0.305235		
							12.555333	3.555604	1.985035	10.984764		
							8.999729					8.999729
												1/2 = 4.4998645

面積計算書

工区

2

ブロック

32

計算者



精算者



備考

2317

17

4'

点	①	②	③	④	⑤	⑥	③ ×	⑤	② ×	⑥	
	X	X-(定数)	X _{n-1} -X _{n+1}	Y	Y-(定数)	Y _{n-1} -Y _{n+1}	+	-	+	-	
IV	-152 599.618	-142,499.000 - 0.618	-	-36, 703.276	-36,963.000 - 10.276	-	11.428	78.354500		7.062504	
21	601.851	- 2.841	+ 9.248	693.528	- 0.428	+ 1.180		5.205024		4.789680	
20	609.476	- 10.476	- 2.233	704.958	- 11.956	+ 9.748		26.697748		102.120048	
								105.052248	5.205024	7.062504	106.909728
								99.842224			99.842224
											1/2 49.923612 m ²
4'	-152 656.585	-152640 6.585	- 2.432	-36, 600.703	-36600 0.703	+ 1.444		17.096960		9.515325	
5'	658.523	8.423	+ 0.494	601.186	1.186	- 1.938		0.590824	16.517574		
35	656.091	6.091	+ 1.938	602.641	2.641	+ 0.493		5.118258		3.002863	
								17.096960	5.909082	16.517574	12.518188
								3.999386		3.999386	
											1/2 1.999693 m ²

面積計算書

工区

2

ブロック

32

計算者



概算者



備考

又分

14' / 15'

点	① X	② X-(定数)	③ X _{n-1} -X _{n+1}	④ Y	⑤ Y-(定数)	⑥ Y _{n-1} -Y _{n+1}	⑦ +	⑧ -	⑨ +	⑩ -
14'	-12 662.117	-12660 2.117	+2.432	-36 672.613	-36670 2.613	-1.438		6.344816	3.044246	
42	660.180	0.180	-0.495	672.114	2.114	+1.937	1.046430			0.348660
13'	662.612	2.612	-1.937	670.676	0.676	-0.499	1.309412		1.303388	
							2.344842	6.344816	4.347634	0.348660
								3.998974	3.998974	
								1/2 1.999487		
15'	-12 661.128	-12649 2.128	-1.443	-36 676.489	-36674 1.489	-2.437	2.148627			5.185936
16'	660.634	1.634	+1.937	678.427	3.427	+0.499		6.638099		0.0815366
29	649.191	0.191	-0.494	674.990	0.990	+1.938	6.0489060			0.370158
							2.6376870	6.638099	4.184936	1.184424
								4.000412	4.000412	
								1/2 2.000206 m ²		

計年月
算日

計算者

pi

検査者



B.NO. 32

各筆面積計算書

地番	算式	隅切	地積	摘要
	福富 454-1		1791.37	
	" 454-22		149.68	
	" 454-23		172.01	
	" 454-28		167.40	
	" 454-33		167.64	
	" 454-38		157.71	
	" 454-43		154.92	
	" 454-39		309.18	
	" -42			
	" 454-29		290.14	
	" 454-32			
	" 454-48		217.55	
	" 454-49		187.57	
	" 454-3		227.68	
	豐成 399-1		1401.07	
	水路		120.15	
	管理道		59.88	
	通路 (2m x 37m) (含む)	2.00 (14') 1.99 (15') 2.00 (4') 1.99 (39') 1.99 2.00	389.44	
	合計		5963.33	
			27	
			41	
	全面積	(27) I 38.27 II 4.49 IV 49.92	5963.41	差 ±0.08