

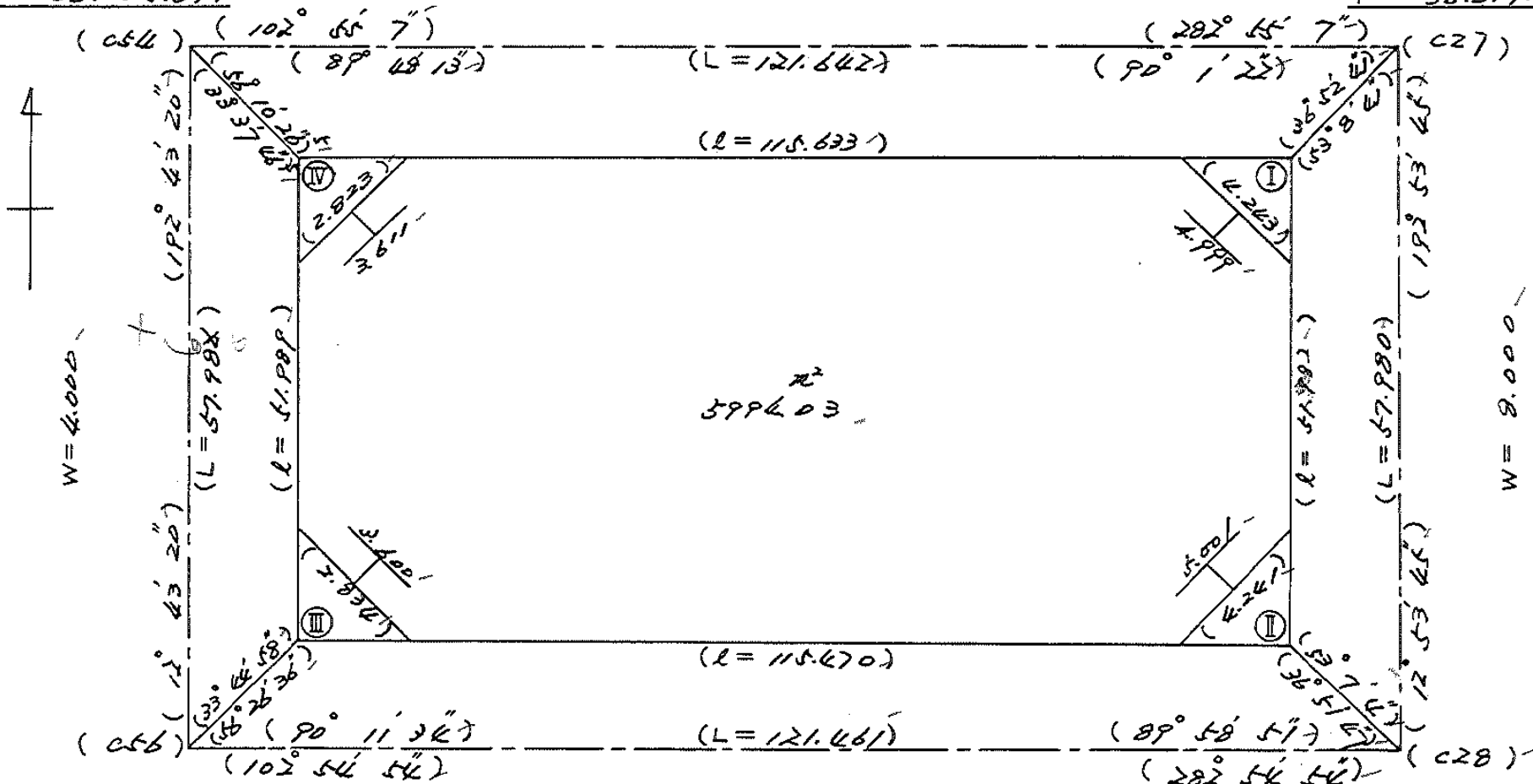
**BLOCK NO. 21**

**街 区 計 算**

$X = -152.719.592'$   
 $Y = -36.435.891'$

$W = 8.000'$

$X = -152.746.787'$   
 $Y = -36.317.328'$



$X = -152.776.158'$   
 $Y = -36.448.656'$

$W = 6.000'$

$X = -152.803.306'$   
 $Y = -36.330.268'$

# 面積計算書

工  
区

2

ブ  
ロ  
ック

21

計  
算  
者



精  
算  
者



備  
考

点	①	②	③	④	⑤	⑥	③	×	⑤	②	×	⑥
	X	X-(定数)	X <sub>n-1</sub> -X <sub>n+1</sub>	Y	Y-(定数)	Y <sub>n-1</sub> -Y <sub>n+1</sub>	+	-	+	-	+	-
I	-152 748.817	-152.700 48.817	+76.523	-36 221.896	-36.300 21.896	-101.105						
II	799.488	99.488	+24.862	333.497	33.497	+124.150						
III	773.679	73.679	-76.523	446.046	146.046	+101.105	11175.878058					
IV	722.965	22.965	-24.862	434.602	134.602	-124.150	3346.474924					
							14522.352982	2508.350022	7786.747536	19800.750495		
							12014.002960					12014.002960
							x 1/2 = 6007.001480					
							$6007.00 - (4.49 + 4.49 + 2.00 + 1.99) = 5994.03$					

# 面地計算

画地略図

工区

ノ

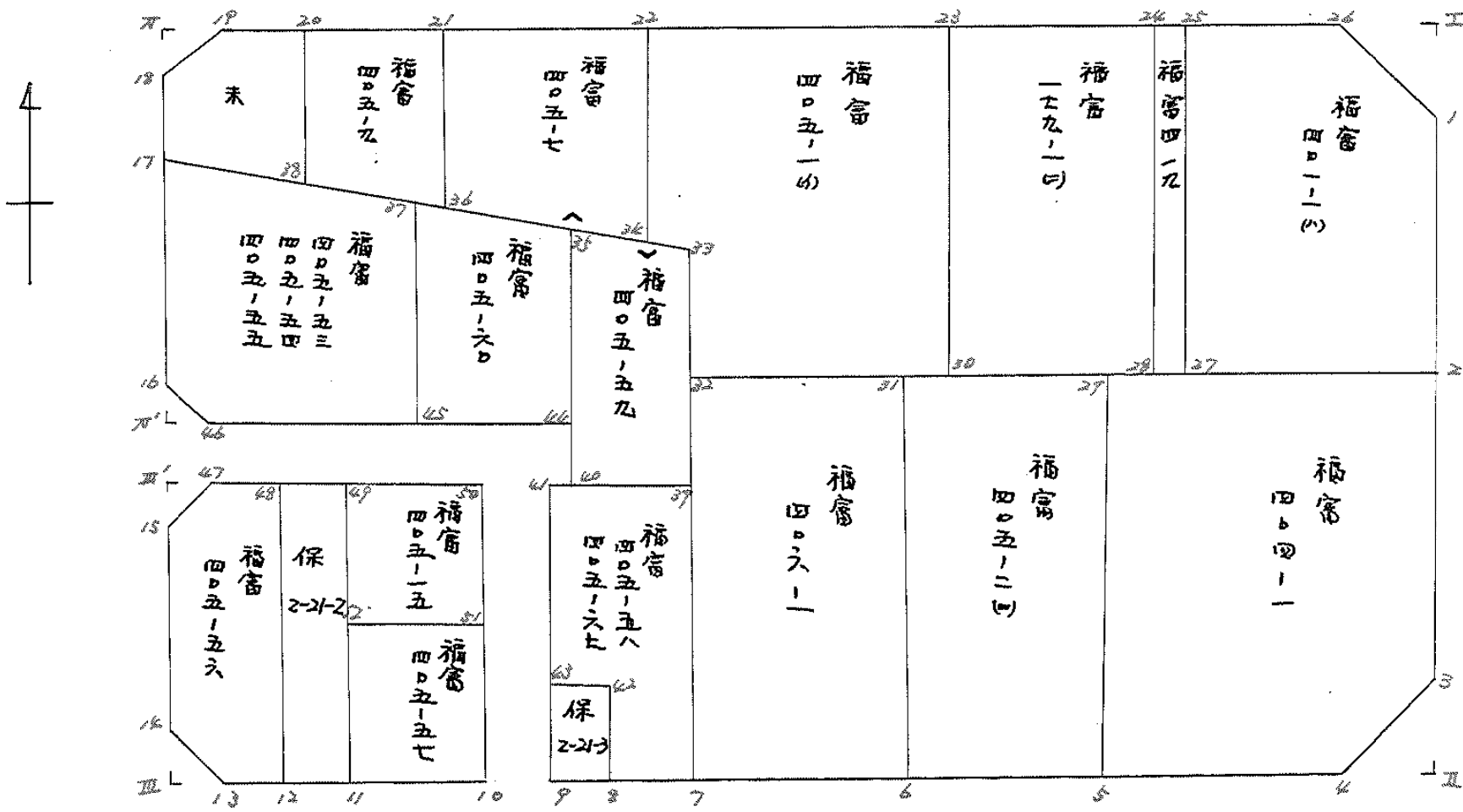
ブロック

ノ

記入者



点検者



# 面積計算書

点	②			④			⑥			
	X	X-(定数)	X <sub>n-1</sub> -X <sub>n+1</sub>	Y	Y-(定数)	Y <sub>n-1</sub> -Y <sub>n+1</sub>	+	-	+	-
	-152	-152.760		-36	-36.390					
39	766.164	6.164	+ 21.468	394.809	4.809	- 8.345		103.239 617		51.438 580
7	784.506	24.506	+ 15.064	398.833	8.833	+ 18.315		133.060 317		448.827 390
9	781.228	21.228	- 21.900	413.124	23.124	+ 10.022	506.415 600			212.747 016
41	762.606	2.606	- 18.190	408.855	18.855	- 5.946	342.972 450			15.495 276
40	763.038	3.038	+ 3.558	407.178	17.178	- 14.046		61.119 324		42.671 748
							849.388 050	297.419 248	109.605 604	661.574 406
							408.896 152			451.968 802
									1/2 = 275.984 401	
	-152	-152.760		-36	-36.410					
50	761.857	11.857	+ 12.216	411.760	1.760	- 13.306		21.500 160		157.769 242
61	770.153	20.153	+ 4.789	413.662	3.662	+ 17.196		17.437 318		346.540 988
42	766.646	16.646	- 12.216	428.956	18.956	+ 13.306	221.566 496			221.491 676
49	757.937	7.937	- 4.789	426.968	16.968	- 17.196	81.259 752			136.454 652
							312.826 248	39.037 478	294.253 894	468.042 664
							273.788 770			273.788 770
									1/2 = 136.894 385	

# 面積計算書

工区  $\pi$       ブロック  $\pi$       計算者       精算者       備考 簿巻 405-58 保  
 " 425-67       $\pi$ -21-3

点	①	②	③	④	⑤	⑥	③ ×	⑤	② ×	⑥
	X	X-(定数)	X <sub>n-1</sub> -X <sub>n+1</sub>	Y	Y-(定数)	Y <sub>n-1</sub> -Y <sub>n+1</sub>	+	-	+	-
	-152	-142.760		-36.	-26.390					
39	766.164	6.164	+ 21.468	394.809	4.809	- 8.345		103.239612	41.438680	
7	784.506	24.406	+ 16.674	398.833	8.833	+ 11.298		147.281442		276.868788
8	782.838	22.838	- 9.512	406.107	16.107	+ 5.476	143.209784			125.060888
42	774.994	14.994	- 9.453	404.309	14.309	+ 5.219	135.262977			78.253686
43	773.385	13.385	- 12.388	411.326	21.326	+ 4.546	264.186488			60.848210
41	762.606	7.606	- 10.347	408.855	18.855	- 4.148	195.092685		10.809688	
40	763.038	3.038	+ 3.558	407.178	17.178	- 14.046		61.119324	42.671748	
							747.751934	311.640378	104.920016	541.031572
							436.111556			436.111556
								$\frac{1}{2} = 218.055778$		
	152	-142.770		-36	-36.400					
42	774.994	4.994	+ 9.453	404.309	4.309	- 5.219		40.732977	26.063686	
8	782.838	12.838	+ 6.234	406.107	6.107	+ 8.815		38.071038		113.166970
9	781.228	11.228	- 9.453	413.124	13.124	+ 5.219	124.061172			58.598932
43	773.385	3.385	- 6.234	411.326	11.326	- 8.815	70.606284		29.838775	
							194.667456	78.804015	55.902461	171.765902
							115.863441			115.863441
								$\frac{1}{2} = 57.9317205$		

# 面積計算書

工区

ズ

ブロック

21

計算者

精算者

備考

積算 405057 ✓  
保 2-21-2 ✓

点	①	②	③	④	⑤	⑥	③ ×	⑤	② ×	⑥
	X	X-(定数)	X <sub>n-1</sub> -X <sub>n+1</sub>	Y	Y-(定数)	Y <sub>n-1</sub> -Y <sub>n+1</sub>	+	-	+	-
41	-152 770.153	-152.760 10.153	+ 13.912	-36 413.662	-36.410 3.662	- 12.908		40.945704	131.054924	
10	780.558	20.558	+ 6.900	416.048	6.048	+ 17.670		41.731200		363.259860
11	777.053	17.053	- 13.912	431.332	21.332	+ 12.908	296.770784			220.120124
42	766.646	6.646	- 6.900	428.956	18.956	- 17.670	130.796400		117.434820	
							427.567184	92.676944	248.489744	503.379984
							334.890240			334.890240
								1/2 = 167.445120 ✓		
49	-152 757.937	-152.760 7.937	+ 20.636	-36 426.968	-36.420 6.968	- 11.510		143.749240	11.984870	
11	777.053	27.053	+ 17.773	431.332	11.332	+ 10.220		201.403636		276.481660
12	775.710	25.710	- 20.636	437.188	17.188	+ 11.510	354.588640			38.822100
48	756.423	6.423	- 17.773	432.842	12.842	- 10.220	228.240866		65.643060	
							482.809306	345.153476	77.627930	315.303760
							237.675830			237.675830
								1/2 = 118.837915 ✓		



# 面積計算書

工  
区

2

ブ  
ロ  
ック

21

計  
算  
者

精  
算  
者

備  
考

積算者 4010101 ✓  
積算者 419 ✓

点	①	②	③	④	⑤	⑥	③ × ⑤		② × ⑥	
	X	X-(定数)	X <sub>n-1</sub> -X <sub>n+1</sub>	Y	Y-(定数)	Y <sub>n-1</sub> -Y <sub>n+1</sub>	+	-	+	-
1	751.741	11.741	+ 26.015	322.566	2.566	+ 2.878		66.754490		33.790598
2	774.161	34.161	+ 17.725	327.698	7.698	+ 25.607		136.447050		874.760727
27	769.466	29.466	- 30.037	348.173	28.173	+ 14.661	846.232401			432.001026
25	744.124	4.124	- 21.320	342.359	22.359	- 23.353	476.693880			96.307772
26	748.146	8.146	+ 7.617	324.820	4.820	- 19.793		36.713940	161.233778	
							1322.926281	229.915480	257.541550	1340.552351
							1083.010801			1083.010801
										1/2 = 541.5054005 ✓
25	744.124	4.124	+ 25.745	342.359	2.359	+ 4.060		60.732455		16.743440
27	769.466	29.466	+ 24.940	348.173	8.173	+ 7.568		203.834620		222.998688
28	769.064	29.064	- 25.745	349.927	9.927	- 4.060	265.570615			117.999840
24	743.721	3.721	- 24.940	344.113	4.113	- 7.568	102.578220			28.160428
							358.148835	264.567075	146.160368	239.742128
							93.581760			93.581760
										1/2 = 46.790880 ✓

# 面積計算書

工区

2

ブロック

2/

計算者



精算者



備考

福宮 1790' (2) ✓

点	①	②	③	④	⑤	⑥	③	×	⑤	②	×	⑥
	X	X-(定数)	X <sub>n-1</sub> -X <sub>n+1</sub>	Y	Y-(定数)	Y <sub>n-1</sub> -Y <sub>n+1</sub>	+		-	+		-
24	-152 743.721	-152.730 13.721	+29.634	-36 344.113	-36.340 4.113	-12.893			121.884647	176.904853		
28	769.064	39.064	+21.055	349.927	9.927	+24.516			209.012985			957.673024
30	764.776	34.776	-29.634	368.629	29.629	+12.893	848.391786					448.366968
23	739.430	9.430	-21.055	362.820	22.820	-24.516	480.475100			231.185880		
							1328.866886		330.897627	408.090733		1406.059992
							997.969259					997.969259
												Y2 = 498.9846295

# 面積計算書

工区

工

ブロック

区

計算者



精算者



備考

福留 405056 ✓

点	①	②	③	④	⑤	⑥	③ × ⑤		② × ⑥	
	X	X-(定数)	X <sub>n-1</sub> -X <sub>n+1</sub>	Y	Y-(定数)	Y <sub>n-1</sub> -Y <sub>n+1</sub>	+	-	+	-
48	-142 756.423	-152.750 6.423	+21.045	-36 432.842	-36.430 2.842	-2.415			59.838310	16.153845
12	775.710	25.710	+17.703	437.188	7.188	+11.254		127.249164		289.340340
13	774.126	24.126	-3.982	444.096	14.096	+8.418	56.130272			203.092668
14	771.728	21.728	-18.019	445.606	15.606	-2.015	281.204514		43.781920	
15	756.107	6.107	-17.073	442.081	12.081	-5.903	206.258913		36.049621	
47	754.655	4.655	+0.316	439.703	9.703	-9.239		3.066148	43.007545	
							43.593.699	190.153.622	138.992.921	492.433.008
							343.440.077			343.440.077
									1/2 = 176.720.0385	

# 面積計算書

工区 Z

Z

ブロック

Z1

計算者

精算者

備考

福富 405016 ✓  
福富 40507 ✓

点	①	②	③	④	⑤	⑥	③	⑤	②	⑥
	X	X-(定数)	X <sub>n-1</sub> -X <sub>n+1</sub>	Y	Y-(定数)	Y <sub>n-1</sub> -Y <sub>n+1</sub>	+	-	+	-
23	-152 739.430	-152.730 9.430	+31.883	-36 362.820	-36.360 2.820	-22.691		89.910060	213.976130	
30	764.776	34.776	+19.697	362.629	8.629	+30.446		169.964413		1048.790096
32	759.127	29.127	-16.439	393.266	33.266	+22.248	450.186372			648.017496
33	748.237	18.237	-12.167	390.877	30.877	+1.249	374.680449			22.960383
34	746.960	16.960	-15.344	394.424	34.424	+0.443	429.741600			7.513280
22	732.893	2.893	-7.430	391.320	31.320	-31.704	234.839600		91.722464	
							1691.458033	249.875473	306.698694	1737.281254
							1431.582460			1431.582460
							分筆後の座標なし		1/2 = 714.791280 ✓	
22	-152 732.893	-152.720 12.893	+18.440	-36 391.320	-36.390 1.320	-15.849		24.340800	204.470089	
34	746.960	26.960	+10.460	394.424	4.424	+11.379		47.784000		306.777840
35	743.443	23.443	-7.894	402.699	12.699	+18.441	100.244906			434.842073
36	739.066	19.066	-14.933	413.066	23.066	+7.684	344.444478			146.422210
21	728.420	8.420	-6.173	410.384	20.384	-21.746	125.830432		184.274920	
							570.420916	72.124800	389.746007	888.142123
							498.396116			498.396116

# 面積計算書

工  
区

2

ブ  
ロ  
ック

21

計  
算  
者



測  
算  
者

備  
考

積算 40691  
積算 405049


点	①	②	③	④	⑤	⑥	+	-	+	-
	X	X-(定数)	X <sub>n-1</sub> -X <sub>n+1</sub>	Y	Y-(定数)	Y <sub>n-1</sub> -Y <sub>n+1</sub>				
31	-152, 763.782	-152, 760 13.782	+29.977	-36, 372.966	-36, 370 2.966	-14.488			88.911782	199.673.616
6	789.104	39.104	+20.724	378.778	8.778	+25.867			181.915272	1011.403.168
7	784.406	34.406	+29.977	398.833	29.833	+14.488	864.326841			499.922928
32	759.127	9.127	-20.724	393.266	23.266	-25.867	482.164584		226.088109	
							1346.491425		270.827054	435.761725
							1075.664371			1075.664371
									1/2 = 537.8321855	
33	-142 748.237	-142, 740 8.237	+22.711	-36 390.877	-36, 390 4.877	-7.890			19.917547	64.989930
39	766.164	26.164	+14.801	394.809	4.809	+16.301			71.178009	426.499364
40	763.038	23.038	-7.004	407.178	17.178	+11.443	120.314712			263.623834
44	759.160	19.160	-19.585	406.252	16.252	-4.479	318.295420		85.817640	
35	743.453	3.453	-10.923	402.699	12.699	-15.375	138.711177		53.089875	
							577.321309		91.095856	203.897445
							486.225753			690.123198
										486.225753
									1/2 = 243.1128765	

# 面積計算書

工区

2

ブロック

 21

計算者



精算者

備考

積算 405.959

点	① X	② X-(定数)	③ X <sub>n-1</sub> -X <sub>n+1</sub>	④ Y	⑤ Y-(定数)	⑥ Y <sub>n-1</sub> -Y <sub>n+1</sub>	⑦ +	⑧ ×	⑨ -	⑩ +	⑪ ×	⑫ -
33	768.237	8.237	+19.204	390.877	0.877	+0.284			16.841908			2.339308
39	766.164	26.164	+12.801	394.809	4.809	+16.301			71.178009			426.499864
40	763.038	23.038	-7.004	407.178	17.178	+11.443	120.314712					263.623834
44	759.160	19.160	-19.595	406.252	16.252	-4.479	318.295620			85.817640		
25	763.453	3.453	-12.200	402.699	12.699	-11.727	154.927800			40.493337		
34	766.960	6.960	+4.784	394.525	4.525	-11.822			21.647600	82.281120		
									593.537932	109.667517	208.592091	692
									483.870415			355.462506
												483.870415
												$\times \frac{1}{2} = 241.9352075$

# 面積計算書

工区 Z ブロック Z/ 計算者 精算者 備考 福寄 405960  
福寄 405054 405054

点	①	②	③	④	⑤	⑥	③	×	⑤	②	×	⑥
	X	X-(定数)	X <sub>n-1</sub> -X <sub>n+1</sub>	Y	Y-(定数)	Y <sub>n-1</sub> -Y <sub>n+1</sub>	+	-	+	-		
24	-152 743.453	-152.730 13.453	+21.200	-36 402.699	-36.400 2.699	-9.428				57.218800		126.834884
44	759.160	29.160	+12.260	406.252	6.252	+16.908				76.649520		492.037280
45	755.713	25.713	-21.200	419.607	19.607	+9.428	415.668400					242.422164
37	737.960	7.960	-12.260	415.680	15.680	-16.908	192.236800			134.587680		
							607.908200			133.868320		261.422564
							474.036880					474.036880
										1/2 = 237.018440 ✓		
37	-152 737.960	-152.730 17.960	+26.369	-36 415.680	-36.410 5.680	-16.434				149.775920		295.154640
45	755.713	35.713	+12.794	419.607	9.607	+23.143				122.911958		826.505959
46	750.754	30.754	-7.410	438.823	28.823	+20.713	213.578430					637.007602
16	748.303	28.303	-21.410	440.320	30.320	-2.782	649.151200			78.738346		
17	729.344	9.344	-10.343	436.041	26.041	-24.640	269.342063			230.236160		
							1132.071693			272.687878		604.129746
							859.387815					1463.513561
												859.387815
										1/2 = 429.6919075 ✓		

# 面積計算書

工  
区

2

ブ  
ロ  
ック

21

計  
算  
者

精  
算  
者

備  
考

番  
号  
405090  
未

点	①	②	③	④	⑤	⑥	③ × ⑤		② × ⑥		
	X	X-(定数)	X <sub>n-1</sub> -X <sub>n+1</sub>	Y	Y-(定数)	Y <sub>n-1</sub> -Y <sub>n+1</sub>	+	-	+	-	
21	-152 728.520	-152.720 8.520	+13.586	-36 410.384	-36.410 0.384	-10.571		5.217024	90.264920		
36	729.066	19.066	+5.283	413.066	3.066	+15.120		16.197678		288.277920	
38	733.803	13.803	-13.586	425.504	15.504	+10.571	210.637344				145.911513
20	725.480	5.480	-5.283	423.637	13.637	-15.120	72.044271		82.857600		
							282.681615	21.414702	172.922520	434.189433	
							261.266913				261.266913
									1/2 = 130.6334565		
20	-152 725.480	-152.720 5.480	+10.391	-36 423.637	-36.420 3.637	-7.149		37.792069	39.176520		
38	733.803	13.803	+3.864	425.504	5.504	+12.404		21.267456		171.212412	
17	729.344	9.344	-8.887	436.041	16.041	+9.538	142.556367				89.123072
18	724.916	4.916	-5.932	435.042	15.042	-3.388	89.229144		16.655408		
19	723.412	3.412	+0.564	432.653	12.653	-11.405		7.136292	38.913860		
							231.785511	66.195815	94.245788	260.335484	
							165.589626				165.589626
									1/2 = 22.794848		



# 面積計算書

工区

2

ブロック

2/

計算者



精算者



備考

番号 40401 ✓  
 番号 40402 (B) ✓

点	①	②	③	④	⑤	⑥	③ ×	⑤	② ×	⑥
	X	X-(定数)	X <sub>n-1</sub> -X <sub>n+1</sub>	Y	Y-(定数)	Y <sub>n-1</sub> -Y <sub>n+1</sub>				
	-152	-152,760		-36	-36,320					
2	774.161	14.161	+29.020	327.698	7.698	-23.729		223.395960	336.026369	
3	796.564	36.564	+24.656	332.828	12.828	+8.723		316.287168		318.947772
4	798.817	38.817	3.697	336.421	16.421	+29.541	60.708437			1146.692997
5	792.867	32.867	31.273	362.369	42.369	+20.136	1325.005737			661.809912
29	767.544	7.544	18.706	356.557	36.557	34.671	683.834242		261.558024	
							2069.549416	539.683128	497.584393	2127.450681
							1529.866288			1529.866288
									1/2 = 764.933144 ✓	
29	767.544	7.544	+29.085	356.557	6.557	-10.599		190.710345	79.943768	
5	792.867	32.867	+21.560	362.369	12.369	+22.221		266.675640		730.337607
6	789.104	29.104	+29.085	378.778	28.778	+10.599	837.008130			208.415088
31	763.782	3.782	21.560	372.966	22.966	-22.221	495.146960		84.039822	
							1332.155090	457.385985	163.983590	1038.712695
							874.769105			874.769105
									1/2 = 437.3845425 ✓	

# 面積計算書

工  
区

Z

ブ  
ロ  
ック

Z1

計  
算  
者

精  
算  
者

備  
考

階  
階  
階

Ⅱ  
Ⅲ

点	①	②	③	④	⑤	⑥	⑦	⑧	⑨	⑩	⑪	⑫
	X	X-(定数)	X <sub>n-1</sub> -X <sub>n+1</sub>	Y	Y-(定数)	Y <sub>n-1</sub> -Y <sub>n+1</sub>	+	-	+	-	+	-
46	-152 750.754	-152.740 10.754	+ 1.951	-36 438.823	-36.430 8.823	+ 0.440			17.213673			4.731760
10'	750.254	10.254	- 2.451	440.760	10.760	+ 1.497	26.372760					15.350238
16	748.303	8.303	+ 0.500	440.320	10.320	- 1.937		5.160000		16.082911		
							26.372760	22.373673		16.082911	20.081998	
							3.999087					3.999087
										1/2 = 1.9995435		
47	-152 754.655	-152.750 4.655	- 1.951	-36 439.703	-36.430 9.703	- 0.441	18.930553			2.052855		
Ⅱ'	754.156	4.156	+ 1.452	441.640	11.640	+ 2.378		16.901280				9.882968
15	756.107	6.107	+ 0.499	442.081	12.081	- 1.937		6.028419		11.829259		
							18.930553	22.929699	13.882114	9.882968		
								3.999146		3.999146		
										1/2 = 1.999573		

# 面積計算書

工  
区

2

ブ  
ロ  
ック

21

計  
算  
者



精  
算  
者



備  
考

第1切 工  
" II

点	①	②	③	④	⑤	⑥	③ × ⑤	② × ⑥
	X	X-(定数)	X <sub>n-1</sub> -X <sub>n+1</sub>	Y	Y-(定数)	Y <sub>n-1</sub> -Y <sub>n+1</sub>	+	-
	-152	152700		-26	36320			
I	748.817	48.817 <sup>+</sup>	3.595	221.896	1.896 <sup>-</sup>	2.254		6.816120
1	751.741	51.741 <sup>-</sup>	0.671	222.566	2.566 <sup>+</sup>	2.924	1721786	
2	748.146	48.146 <sup>-</sup>	2.924	224.820	4.820 <sup>-</sup>	0.670	14.093680	32.257820
							15.815466	6.816120
							8.999346	142.291338
								151.290684
								8.999346
								1/2 = 4.499673
	-152	152790		-26	36330			
3	796.564	6.564 <sup>+</sup>	0.671	222.822	2.822 <sup>-</sup>	2.924		1.897588
II	799.488	9.488 <sup>+</sup>	2.253	223.497	3.497 <sup>+</sup>	3.593		7.878741
4	798.817	8.817 <sup>-</sup>	2.924	226.621	6.421 <sup>-</sup>	0.669	18.775004	5.898573
							18.775004	9.776329
							8.998675	25.091709
								34.090384
								8.998675
								1/2 = 4.4993375

# 面積計算書

工区

2

ブロック

21

計算者



精算者

〇

備考

昭和

Ⅲ

Ⅱ

点	①	②	③	④	⑤	⑥	③	×	⑤	②	×	⑥
	X	X-(定数)	X <sub>n-1</sub> -X <sub>n+1</sub>	Y	Y-(定数)	Y <sub>n-1</sub> -Y <sub>n+1</sub>	+		-	+		-
		152770			36440							
13	774.126	4.126+	1.951	442.096	4.096+	0.440			7.991296			1.815440
Ⅲ	773.479	3.679	2.398	446.046	6.046+	1.510	14.498308					5.555290
14	771.728	1.728+	0.447	445.606	5.606	1.950			2.505882	3.369600		
							14.498308		10.497178	3.369600		7.370730
							4.001130					4.001130
									1/2 = 2.000565			
18	724.916	4.916-	0.447	435.062	5.042+	1.949	2.253774					9.581284
Ⅱ	722.965	2.965-	1.504	436.602	4.602-	2.389	6.921408			7.083385		
19	723.412	3.412+	1.951	432.653	2.653+	0.440			5.176003			1.501280
							9.175182		5.176003	7.083385		11.082564
							3.999179					3.999179
									1/2 = 1.9995895			

# 面積計算書

工区

2

ブロック

2/

計算者

精算者

備考

道路 ✓

点	①	②	③	④	⑤	⑥	③	×	⑤	②	×	⑥
	X	X-(定数)	X <sub>n-1</sub> -X <sub>n+1</sub>	Y	Y-(定数)	Y <sub>n-1</sub> -Y <sub>n+1</sub>						
	-152	-152,750		-36	-36,400							
9	781.228	31.228	+ 17.982	413.124	13.124	+ 7.193			235.602048			224.623004
10	780.558	30.558	- 19.371	416.048	16.048	- 1.364	310.865808			41.681112		
50	761.857	11.857	- 26.402	411.760	11.760	+ 25.592	310.487420					302.444344
Ⅲ'	754.156	4.156	- 11.603	441.640	41.640	+ 29.000	483.148920					120.524000
Ⅳ'	750.254	0.254	+ 5.004	440.760	40.760	- 35.388			203.963060	8.988552		
46	759.160	9.160	+ 12.784	406.252	6.252	- 33.582			79.925568	307.611120		
40	763.038	13.038	+ 3.446	407.178	7.178	+ 2.603			24.735388			33.937916
41	762.606	12.606	+ 18.190	408.855	8.855	+ 5.946			141.072450			74.955276
							1104.502248		705.298494	358.280784		757.384538
							399.203754					399.203754
												1/2 = 199.601877 ✓

計年月  
算日

計  
算  
者



檢  
查  
者



B.NO. 21

各筆面積計算書

地番	算式	隅切	地積	摘要
福富	405057		167 44	
"	405058. 405067		218 05	
"	405015		136 89	
"	40191 (イ)		541 50	
"	419		46 79	
"	17901 (ロ)		498 98	
"	405060		237 01	
"	405054. 405053. 405055		429 69	
"	405056		176 72	
"	40601		537 83	
"	405059		241 93	
"	40509		130 63	
"	40501 (ハ)		715 79	
"	40507		249 19	
"	40401		764 93	
"	40502 (ニ)		437 38	
保	202102		118 83	
"	202103		57 93	
	未		82 79	
	通路	199 60		
	隅切 1	4 49		
	" 2	4 49		
	" 3	2 00		
	" 4	1 99		

