

**BLOCK NO. 22**

**街 区 計 算**

街区略図

工区

2

ブロック

22

記入者



点検者



$X = -152.776.158$

$Y = -36.449.656$

$W = 4.000$

$X = -152.803.306$

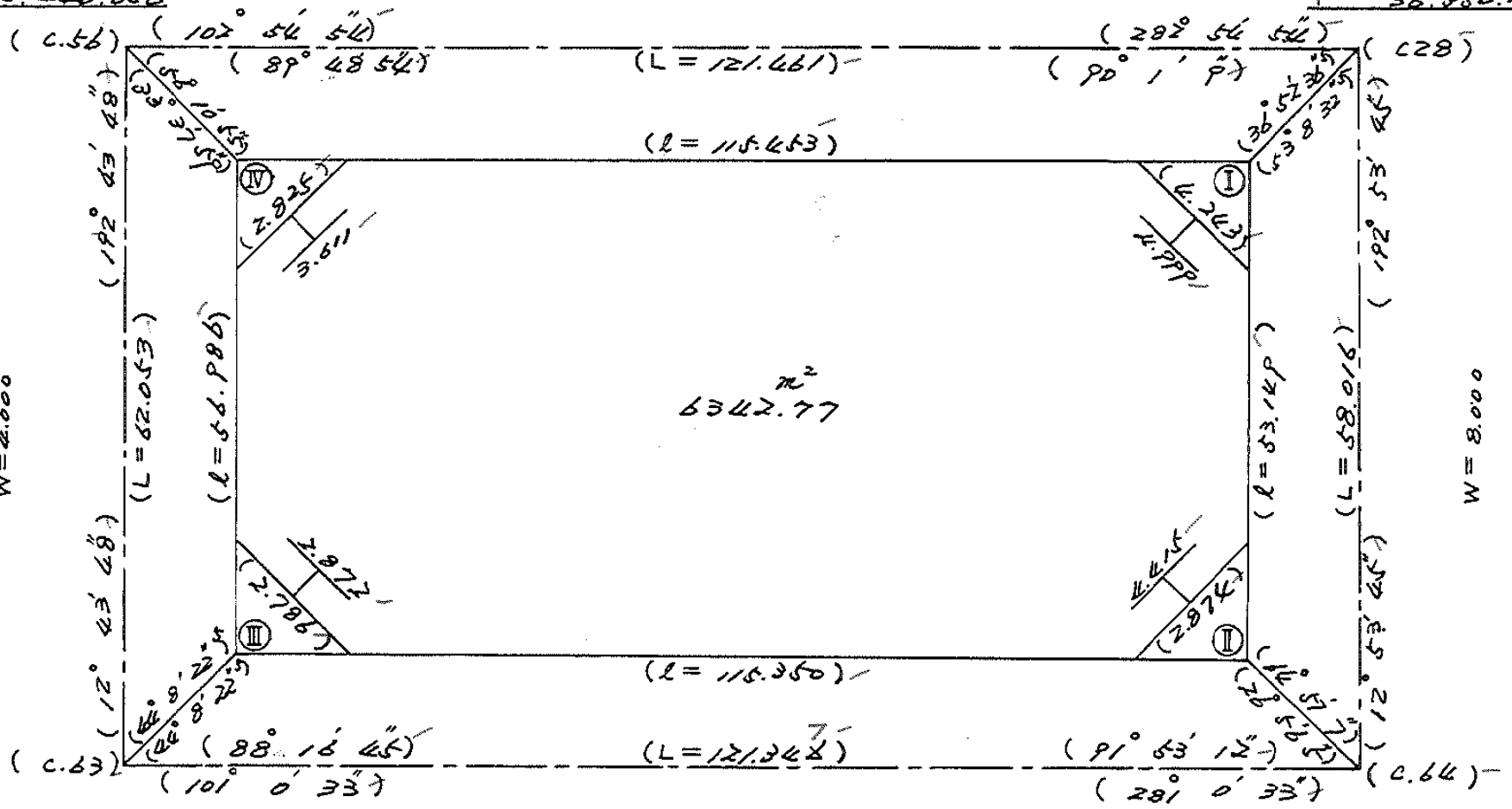
$Y = -36.430.268$



$W = 4.000$

$W = 8.000$

$\pi^2$   
 $6342.77$



$X = -152.836.686$

$Y = -36.462.330$

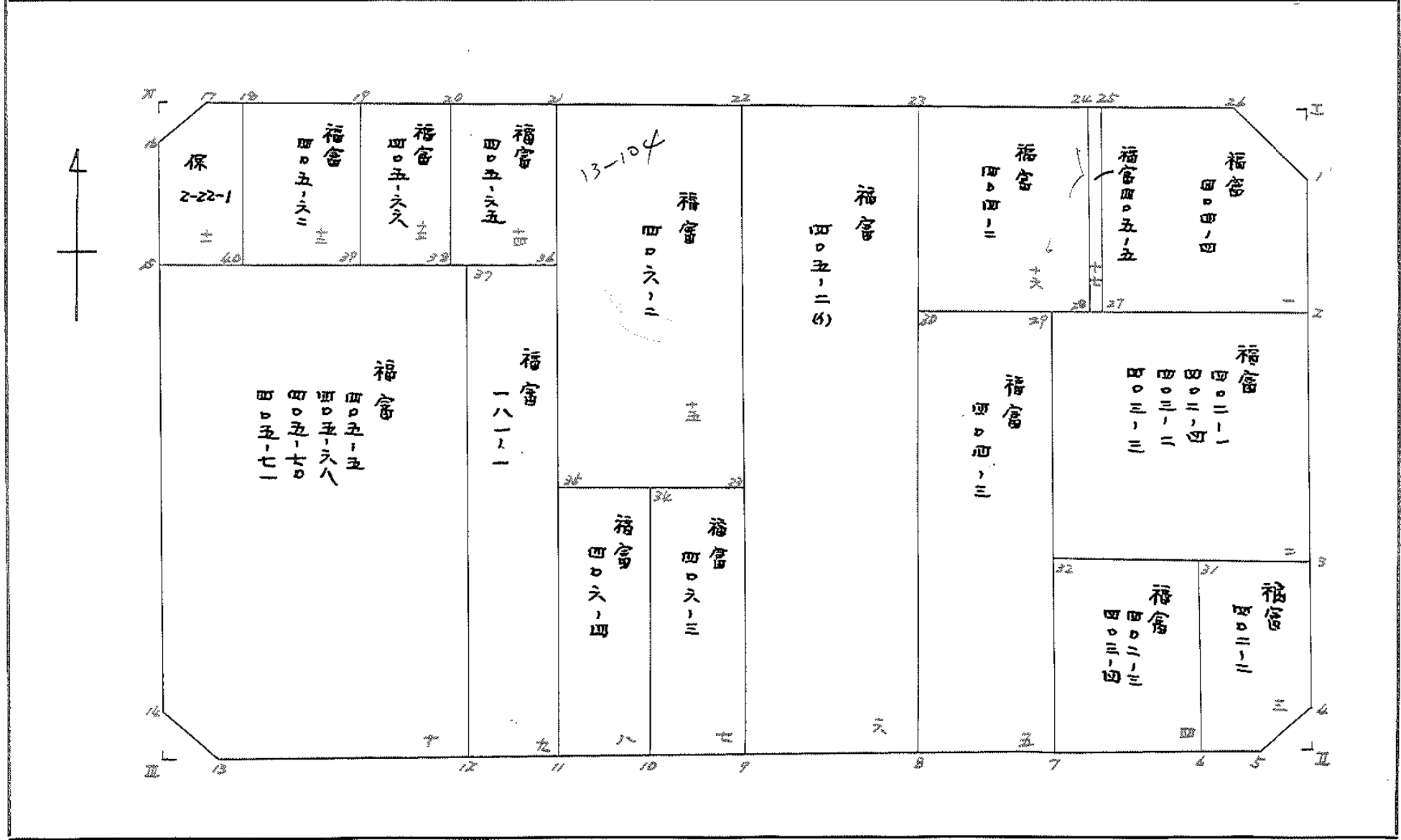
$W = 4.000$

$X = -152.859.809$

$Y = -36.343.216$



# 地 計 算



# 面積計算書

工区

2

ブロック

22

計算者



精算者



備考

1. 福窓 404-4

2. 福窓 402-1 403-2  
-4 -3

点	①	②	③	④	⑤	⑥	③ ×	⑤	② ×	⑥	
	X	X-(定数)	X <sub>n-1</sub> -X <sub>n+1</sub>	Y	Y-(定数)	Y <sub>n-1</sub> -Y <sub>n+1</sub>	+	-	+	-	
	-152	-152.800		-36	-36.330						
1	808.260	8.260	+20.651	335.506	5.506	+1.651		113.704406		13.637260	
2	825.316	25.316	+12.983	339.411	9.411	+21.656		122.183013		548.243296	
27	821.243	21.243	-24.050	357.162	27.162	+13.172	653.246100			279.812796	
28	801.266	1.266	-16.578	352.583	22.583	-19.402	374.380974		24.562932		
28	804.665	4.665	+6.994	337.760	7.760	-17.077		54.273440	79.664205		
								1927.627074	290.160859	104.227137	841.693352
								737.466215			737.466215
								$\frac{1}{2} = 368.7331075$			
	-152	-152.820		-36	-36.330						
2	825.316	5.316	+22.825	339.411	9.411	-16.332		214.806075	86.820912		
3	843.441	23.441	+13.447	343.561	13.561	+24.613		182.354767		576.953333	
22	838.763	18.763	-22.825	364.024	34.024	+16.332	776.597800			306.437316	
29	820.616	0.616	-13.447	359.893	29.893	-24.613	401.971171		15.161608		
								1178.568971	397.160842	101.982520	883.390649
								781.408129			781.408129
								$\frac{1}{2} = 390.7040645$			

# 面積計算書

工区

>

ブロック

22

計算者

精算者

備考

3. 補倉 402-2

4. 補倉 402-3  
403-4

点	①	②	③	④	⑤	⑥	③ ×	⑤	② ×	⑥
	X	X-(定数)	X <sub>n-1</sub> -X <sub>n+1</sub>	Y	Y-(定数)	Y <sub>n-1</sub> -Y <sub>n+1</sub>	+	-	+	-
	-152	-152.840		-36	-36.340					
3	843.441	3.441	+13.758	343.561	3.561	-6.075		48.992238	20.904075	
4	855.195	15.195	+13.321	346.252	6.252	+5.100		83.282892		77.494500
5	856.762	16.762	+0.230	348.661	8.661	+9.281		1.992030		155.568122
6	855.425	15.425	-15.325	355.533	15.533	+3.666	238.043225			56.568050
31	841.437	1.437	-11.984	352.327	12.327	-11.972	147.726768		17.203764	
							385.769993	134.267160	38.107839	289.610672
							251.502833			251.502833
							$\frac{1}{2} = 125.7514165$			
31	841.437	11.437	+16.662	352.327	2.327	-8.491		38.772474	97.111567	
6	855.425	25.425	+11.700	355.533	5.533	+14.969		64.736100		380.586825
7	853.137	23.137	-16.662	367.296	17.296	+8.491	288.183932			196.456267
32	838.763	8.763	-11.700	364.024	14.024	-14.969	164.080800		131.03347	
							452.266752	103.508574	228.284914	577.043092
							348.758178			348.758178
							$\frac{1}{2} = 174.379089$			

分筆後の座標なし

# 面積計算書

工区

2

ブロック

22

計算者



精算者



備考

4. 福富 404-3  
6. 福富 405-24)

点	①	②	③	④	⑤	⑥	③ ×	⑤	② ×	⑥
	X	X-(定数)	X <sub>n-1</sub> -X <sub>n+1</sub>	Y	Y-(定数)	Y <sub>n-1</sub> -Y <sub>n+1</sub>	+	-	+	-
	-152	-152.810		-36	-36.350					
2P	820.616	10.616	+35.023	359.893	9.893	-3.500		346.482539	37.156000	
7	853.137	43.137	+30.378	367.296	17.296	+18.419		525.417888		794.540403
8	850.994	40.994	-35.023	378.312	28.312	+3.500	991.571176			143.479000
3D	818.114	8.114	-30.378	370.796	20.796	-18.419	631.740888		149.451766	
							1623.312064	871.900427	186.607766938	8019.403
							751.411637			751.411637
							$Y_2 = 875.7058185$			
	-152	-152.790		-36	-36.360					
23	798.137	8.137	+56.409	366.230	6.230	-3.407		351.428070	27.722759	
8	850.994	60.994	+49.814	378.312	18.312	+27.723		912.193968		1690.936662
9	847.951	57.951	-56.409	393.953	33.953	+3.407	1915.254777			197.439057
22	794.585	4.585	-49.814	381.719	21.719	-27.723	1081.910266		127.109955	
							2997.165043	1263.622038	154.832714	1888.375719
							1733.543005			1733.543005
							$Y_2 = 866.7715025$			



# 面積計算書

工区

2

ブロック

22

計算者



精算者



備考

7. 福富 406-3  
8. 福富 406-4

点	①	②	③	④	⑤	⑥	③ × ⑤	② × ⑥
	X	X-(定数)	X <sub>n-1</sub> -X <sub>n+1</sub>	Y	Y-(定数)	Y <sub>n-1</sub> -Y <sub>n+1</sub>	+ -	+ -
23	-152 827.469	-152.820 7.469	+22.298	-36 389.258	-36.380 9.258	-4.536	206.434884	33.879384
9	847.951	27.951	+18.684	393.953	13.953	+13.934	260.697852	389.469234
10	846.153	26.153	-22.298	403.192	23.192	+4.536	517.135216	118.630008
24	825.653	5.653	-18.684	398.489	18.489	-13.934	345.448476	78.768902
							862.383692	467.132736
							395.450956	395.450955
							1/2 = 197.725478	
24	-152 825.653	-152.820 5.653	+22.315	-36 398.489	-36.390 8.489	-4.528	189.432035	25.596784
10	846.153	26.153	+18.703	403.192	13.192	+13.941	246.729976	366.598973
11	844.356	24.356	-22.315	412.430	22.430	+4.528	500.525450	110.283968
25	823.838	3.838	-18.703	407.720	17.720	-13.941	331.417160	53.505558
							831.942610	436.162011
							395.780599	395.780599
							1/2 = 197.8902945	

# 面積計算書

工区

2

ブロック

22

計算者



精算者



備考

P. 福富 181-1  
10 福富 { 405-5 405-70  
          -68       -71

点	①	②	③	④	⑤	⑥	③	⑤	②	⑥
	X	X-(定数)	X <sub>n-1</sub> -X <sub>n+1</sub>	Y	Y-(定数)	Y <sub>n-1</sub> -Y <sub>n+1</sub>	+	-	+	-
	-152	-152.800		-36	-36.400					
26	805.970	5.970	+40.238	403.619	3.619	+0.726		145.621322		4.334220
11	844.356	44.356	+36.801	412.430	12.430	+16.960		457.436430		752.277760
12	842.771	42.771	-40.238	420.579	20.579	-0.726	828.057802		31.051746	
27	804.118	4.118	-36.801	411.704	11.704	-16.960	430.718904		69.841280	
							1258.776700	603.057752	100.893026	756.611980
							655.718954			655.718954
							1/2 = 327.859477			
27	-152	-152.790		-36	-36.400					
	804.118	14.118	+47.630	411.704	11.704	-30.315		557.461520	427.987170	
12	842.771	52.771	+31.380	420.579	20.579	+46.258		645.769020		244.080918
13	835.498	45.498	-9.606	457.962	57.962	+38.905	556.782972			1776.099690
14	833.165	43.165	-40.357	459.484	59.484	-7.068	2400.596788		305.090220	
15	795.141	5.141	-29.047	450.894	50.894	-47.780	1478.318018		245.636980	
							4435.696778	1203.230540	978.714370	4211.180608
							3232.466238			3232.466238
							1/2 = 1616.233119			

# 面積計算書

工区

2

ブロック

22

計算者

精算者

備考

11. 保 2-22-1  
12. 積富 46-62

点	①	②	③	④	⑤	⑥	③ × ⑤	② × ⑥
	X	X-(定数)	X <sub>n-1</sub> -X <sub>n+1</sub>	Y	Y-(定数)	Y <sub>n-1</sub> -Y <sub>n+1</sub>	+ -	+ -
18	781.207	-152.770 11.207	+16.838	-36 440.059	-36.440 0.059	-1.837	0.993442	20.587259
40	794.816	26.816	+13.934	443.581	3.581	+10.835	49.897654	290.551360
15	795.141	25.141	-15.334	450.894	10.894	+4.228	167.048596	106.296148
16	781.482	11.482	-15.163	447.809	7.809	-5.476	118.407867	62.875432
17	779.978	9.978	-0.275	445.418	5.418	-7.750	1.489950	77.329500
							286.946413	50.891096
							236.055317	396.847508
							$V_2 = 118.0276585$	236.055317
19	786.135	-152.780 6.135	+20.533	-36 418.568	-36.410 8.568	-17.975	175.926744	110.276625
29	801.740	21.740	+10.681	422.084	12.084	+25.013	129.069204	543.782120
40	796.816	16.816	-20.533	443.581	33.581	+17.975	689.518673	302.267600
18	781.207	1.207	-10.681	440.059	30.059	-25.013	321.060179	30.190891
							1010.578852	304.995948
							705.582904	140.467316
							$\frac{1}{2} = 352.791452$	846.050220
								705.582904

# 面積計算書

工区

2

ブロック

22

計算者



精算者



備考

13 福富 405-26

14 福富 405-65

点	①	②	③	④	⑤	⑥	③ ×	⑤	② ×	⑥
	X	X-(定数)	X <sub>n-1</sub> -X <sub>n+1</sub>	Y	Y-(定数)	Y <sub>n-1</sub> -Y <sub>n+1</sub>	+	-	+	-
20	788.258	8.258	+17.720	409.310	9.310	-5.717		164.973200	27.210986	
28	803.855	23.855	+13.482	412.851	12.851	+12.774		173.257182	304.723770	
29	801.740	21.740	-17.720	422.084	22.084	+5.717	391.328480		124.287580	
19	786.135	6.135	-13.482	418.568	18.568	-12.774	280.333776		78.368490	
							641.662256	338.230382	125.579476	429.011350
							303.431874			303.431874
							y <sub>2</sub> = 151.715937			
21	780.284	10.384	+17.712	400.041	0.041	-5.691		0.726192	59.095344	
26	805.970	25.970	+13.471	403.619	3.619	+12.810		48.751849	332.675700	
28	803.855	23.855	-17.712	412.851	12.851	+5.691	227.616912		135.758805	
20	788.258	8.258	-13.471	409.310	9.310	-12.810	125.415010		105.784980	
							353.031922	49.477741	164.880324	468.434505
							303.554181			303.554181
							y <sub>2</sub> = 151.7770905			

# 面積計算書

工区

2

ブロック

22

計算者



精算者



備考

15. 福富 406-2  
16. 福富 404-2

点	①	②	③	④	⑤	⑥	③ × ⑤	② × ⑥
	X	X-(定数)	X <sub>n-1</sub> -X <sub>n+1</sub>	Y	Y-(定数)	Y <sub>n-1</sub> -Y <sub>n+1</sub>	+ -	+ -
22	<sup>-152</sup> 794.585	-152.790 4.585	+37.085	<sup>-36</sup> 381.719	-36.380 1.719	-10.783	63.749115	49.440055
23	827.469	37.469	+29.253	389.258	9.258	+26.001	270.824274	974.231469
25	823.838	33.838	-37.085	407.720	27.720	+10.783	1027.996200	364.875154
21	790.384	0.384	-29.253	400.041	20.041	-26.001	586.259373	9.984384
							1614.255573	334.573389
							1279.682184	1279.682184
							1/2 = 639.841092	
24	<sup>-152</sup> 801.199	-152.790 11.199	+23.039	<sup>-36</sup> 352.876	-36.350 2.876	-8.776	66.260164	78.282424
28	821.176	31.176	+16.915	357.454	7.454	+17.920	126.084410	558.673920
20	818.114	28.114	-23.039	370.796	20.796	+8.776	479.119044	246.728460
22	798.137	8.137	-16.915	366.230	16.230	-17.920	274.530450	145.895040
							253.349494	192.344574
							561.304920	805.402384
							1/2 = 280.652460	561.304920

# 面積計算書

工区

2

ブロック

22

計算者



計算者



備考

17. 補窟 405-5

点	①	②	③	④	⑤	⑥	+	-	②	×	⑥
	X	X-(定数)	X <sub>n-1</sub> -X <sub>n+1</sub>	Y	Y-(定数)	Y <sub>n-1</sub> -Y <sub>n+1</sub>			+		-
	-152	-152.800		-36	-36.350						
26	801.266	1.266	+20.044	352.583	2.583	+4.286		51.773652			5.426076
27	821.243	21.243	+19.910	357.162	7.162	+4.871		142.595420			103.474653
28	821.176	21.176	-20.044	357.454	7.454	-4.286	149.407975				90.760336
29	801.199	1.199	-19.910	352.876	2.876	-4.871	57.261160				5.840329
							206.669136	194.369072	96.600665		108.900729
							12.300064				12.300064
							1/2 = 6.150032				

# 面積計算書

工  
区

2

ブ  
ロ  
ック

22

計  
算  
者



精  
算  
者



備  
考

隔切 I  
II

点	①	②	③	④	⑤	⑥	③	×	⑤	②	×	⑥
	X	X-(定数)	X <sub>n-1</sub> -X <sub>n+1</sub>	Y	Y-(定数)	Y <sub>n-1</sub> -Y <sub>n+1</sub>	+	-	+	-		
I	805.336	1.336	+3.595	334.836	0.836	-2.254			3.005420	3.011344		
1	808.260	4.260	-0.671	335.506	1.506	+2.924	1.010626					12.456240
26	804.665	0.665	-2.924	337.760	3.760	-0.670	10.994240			0.445550		
							12.006766	3.005420	3.456894	12.456240		
							8.999346					9.999346
							x/2 = 4.499673					
4	855.195	0.195	+0.382	346.252	0.252	-1.963			0.096264	0.382785		
II	857.144	2.144	+1.567	346.698	0.698	+2.409			1.093766			5.164896
5	858.762	1.762	-1.969	348.661	2.661	-0.466	5.186289			0.785852		
							5.186289	1.190030	1.163637	5.164896		
							3.996259					3.996259
							x/2 = 1.9981295					

# 面積計算書

工  
区

2

ブ  
ロ  
ック

22

計  
算  
者



精  
算  
者



備  
考

隔切

Ⅲ

Ⅳ

点	①	②	③	④	⑤	⑥	③ × ⑤	② × ⑥
	X	X-(定数)	X <sub>n-1</sub> -X <sub>n+1</sub>	Y	Y-(定数)	Y <sub>n-1</sub> -Y <sub>n+1</sub>		
	-152	-152.833		-36	-32.457			
13	835.498	2.498	+1.951	457.962	0.962	+0.441		1.876862
Ⅲ	835.116	2.116	-2.223	459.925	2.925	+1.522	6.824025	
14	833.165	0.165	+0.382	459.484	2.484	-1.963		0.948888
							6.824025	2.925750
							3.998275	0.323895
							$x \frac{1}{2} = 1.9991375$	4.322170
								3.998275
16	-152	-152.779		-36	-32.445			
	781.482	2.482	-0.447	447.809	2.809	+1.950	1.255623	
Ⅳ	779.531	0.531	-1.524	447.368	2.368	-2.391	3.561472	1.269621
17	779.978	0.978	+1.951	445.418	0.418	+0.441		0.815518
							4.817095	0.815518
							4.001577	1.269621
							$x \frac{1}{2} = 2.0007885$	5.271198
								4.001577



計年 月 算日	計 算 者	檢 查 者
---------------	-------------	-------------

B.NO. 22

各筆面積計算書

地番	算式	隅切	地積	摘要
福富				
404-4			368.73	
"				
402-1	403-2		370.70	
"	-3			
402-2			125.75	
"				
402-3			174.37	
402-4				
"				
404-3			375.70	
"				
405-2 (1)			866.77	
"				
406-3			197.72	
"				
406-4			197.89	
"				
181-1			327.85	
"				
405-5	405-70		1616.23	
-68	-71			
保				
2-22-1			118.02	
福富				
405-62			352.79	
"				
405-66			151.71	
"				
405-65			151.77	
"				
406-2			639.84	
"				
404-2			280.65	
"				
405-5			6.15	
2311				
I		4.49		
"				
II		1.99		
"				
III		1.99		
"				
IV		2.00		
計			6353.16	
全体			6353.24	
差			+ 0.08	