

**BLOCK NO. 23-1**

**街区計算**

街区略図

工区

Z

ブロック

Z3-1

記入者



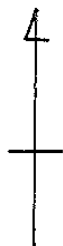
点検者



$$\begin{aligned} X &= -152,760.155 \\ Y &= -36,518.437 \end{aligned}$$

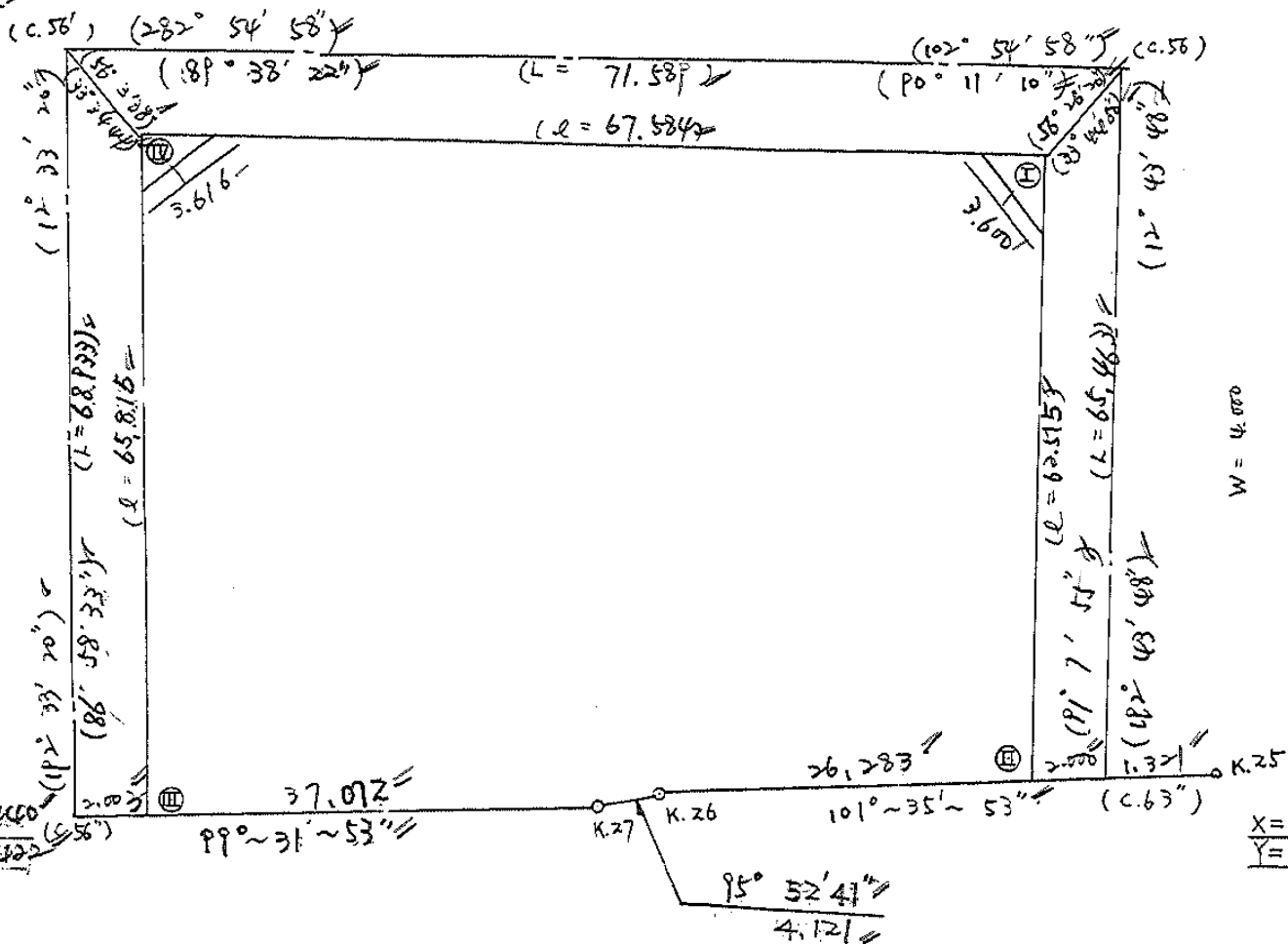
W = 6.000

$$\begin{aligned} X &= -152,776.158 \\ Y &= -36,448.656 \end{aligned}$$



W = 4.000

$$\begin{aligned} X &= -152,827.440 \\ Y &= -36,533.622 \end{aligned}$$



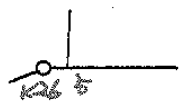
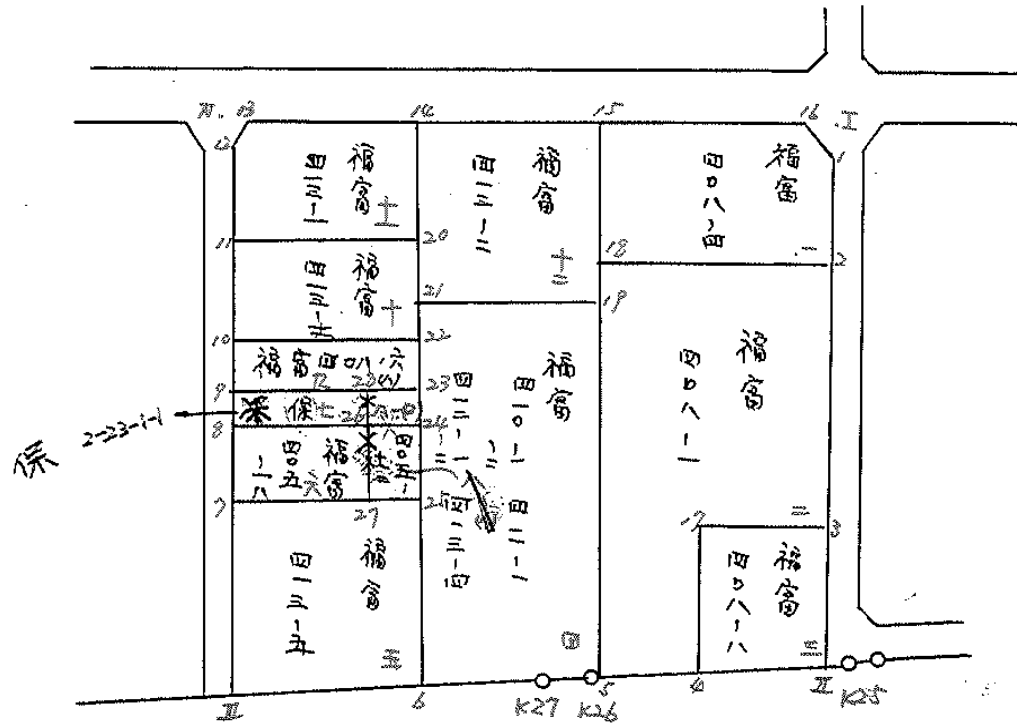
$$\begin{aligned} X &= -152,840.017 \\ Y &= -36,463.075 \end{aligned}$$

W = 4.000



# 圖地計算

BN0 23-1



# 面積計算書

工区

2

ブロック

23-1

計算者



精算者



備考

1. 福富 408-4  
2. 福富 408-1

点	①	②	③	④	⑤	⑥	③ × ⑤		② × ⑥	
	X	X-(定数)	X <sub>n-1</sub> -X <sub>n+1</sub>	Y	Y-(定数)	Y <sub>n-1</sub> -Y <sub>n+1</sub>	+	-	+	-
1	<sup>-152</sup> 780.588	<sup>-152.770</sup> 10.588	+17.422	<sup>-36</sup> 451.707	<sup>-36.450</sup> 1.707	+1.885			29.739354	19.958380
2	795.612	24.612	+9.184	455.101	+10.111	+28.831			46.847584	738.419572
18	789.772	19.772	-22.799	480.538	30.538	+21.561	696.235862			426.304092
15	772.813	2.813	-11.582	476.662	26.662	-27.322	308.799284			76.856786
16	778.190	8.190	+7.775	453.216	3.216	-24.955			25.004400	204.381450
							1025.035146	101.591338	281.238236	1184.682044
							903.443808			903.443808
									1/2 = 451.721904	
2	<sup>-152</sup> 795.612	<sup>-152.700</sup> 95.612	+30.929	<sup>-36</sup> 455.101	<sup>-36.400</sup> 55.101	-19.769			1704.218829	1890.153628
3	820.701	120.701	+24.177	460.769	60.769	+22.837			1469.212113	2756.448737
17	819.789	119.789	+15.953	477.938	77.938	+18.705	1243.344916			2240.653245
4	836.654	136.654	+14.556	479.474	79.474	+12.787	1156.823546			1747.394698
5	834.345	134.345	-46.882	490.725	90.725	+1.064	4253.389650			142.943080
18	789.772	89.772	-38.733	480.538	80.538	-25.624	3119.478354			3198.03728
							7372.847806	5573.599400	5088.191356	6887.439760
							1799.248406			1799.248406
									1/2 = 899.624202	

# 面積計算書

工区

2

ブロック

22-1

計算者



精算者



備考 5. 福富 413-5  
6. 福富 405-18

点	①	②	③	④	⑤	⑥	③ × ⑤	② × ⑥
	X	X-(定数)	X <sub>n-1</sub> -X <sub>n+1</sub>	Y	Y-(定数)	Y <sub>n-1</sub> -Y <sub>n+1</sub>	+ -	+ -
25	807.165 <sup>-152</sup>	9.165 <sup>152,800</sup>	+26.390	506.695 <sup>36</sup>	6.695 <sup>-36,500</sup>	-14.578	176.681050	133.607370
6	831.082	31.082	+18.606	511.729	11.729	+24.752	218.229774	769.341664
Ⅲ	827.771	27.771	-26.390	531.447	31.447	+14.578	829.886330	404.845638
7	804.692	4.692	-18.606	526.307	26.307	-24.752	489.468042	116.136384
							1319.354372	394.910524
							249.743754	1174.187302
							924.443548	924.443548
								1/2 = 462.221774
26	799.862 <sup>-152,790</sup>	9.862 <sup>152,790</sup>	+12.187	508.293 <sup>36</sup>	8.293 <sup>-36,500</sup>	-14.165	101.066791	139.695230
27	808.356	18.356	+4.830	510.244	10.244	+18.014	49.478520	330.664984
7	804.692	14.692	-12.187	526.307	26.307	+14.165	320.603409	208.112180
8	796.169	6.169	-4.830	524.409	24.409	-18.014	117.895470	111.128366
							438.498079	150.545311
							250.823596	538.777164
							287.953568	287.953568
								1/2 = 143.976784

合筆あり

# 面積計算書

工区

ノ

ブロック

23-1

計算者



精算者



備考

9. 福富 408-60

10. 福富 413-11

点	①	②	③	④	⑤	⑥	③ × ⑤		② × ⑥	
	X	X-(定数)	X <sub>n-1</sub> -X <sub>n+1</sub>	Y	Y-(定数)	Y <sub>n-1</sub> -Y <sub>n+1</sub>	+	-	+	-
22	793.525 <sup>-152</sup>	13.525 <sup>-152.780</sup>	+9.147	503.102 <sup>-37</sup>	3.102 <sup>-36.500</sup>	-18.648		28.373996	252.214200	
23	798.157	18.157	+0.133	506.166	4.166	+20.745		0.513418		376.666965
9	793.648	13.648	-9.147	503.847	23.847	+18.648	218.128509			254.507905
10	789.010	9.010	-0.123	522.814	22.814	-20.745	2.906122		186.912458	
							220.934531	20.886412	439.126650	631.176869
							192.048219			192.048219
										x 1/2 = 96.0241095
20	781.874 <sup>-152</sup>	11.874 <sup>-152.770</sup>	+16.181	500.426 <sup>-36</sup>	0.426 <sup>-36.500</sup>	-17.114		6.893106	203.211635	
22	793.525	23.525	+7.136	503.102	3.102	+22.388		221.358725		526.677750
10	789.010	19.010	-16.181	522.814	22.814	+17.114	369.153334			325.337140
11	777.344	7.344	-7.136	520.216	20.216	-22.388	144.261376		164.417472	
							513.447105	29.028978	367.629108	852.014840
							484.385732			484.385732
										x 1/2 = 242.192866



# 面積計算書

工区

2

ブロック

23-1

計算者



精算者



備考

11. 福富 413-1  
12. 福富 413-2

点	①	②	③	④	⑤	⑥	③ × ⑤		② × ⑥	
	X	X-(定数)	X <sub>n-1</sub> -X <sub>n+1</sub>	Y	Y-(定数)	Y <sub>n-1</sub> -Y <sub>n+1</sub>	+	-	+	-
14	<sup>-152</sup> 768.089	<sup>-152.760</sup> 8.089	+17.897	<sup>-36</sup> 497.260	<sup>-36.490</sup> 7.260	-14.765			129.932220	119.634085
20	781.874	21.874	+9.255	500.426	10.426	+22.956			96.492630	502.139540
11	777.344	17.344	-16.392	520.216	30.216	+17.148	495.300672			297.414912
12	765.482	5.482	-13.367	517.574	27.574	-5.025	368.581658			27.547050
13	763.977	3.977	+2.607	645.191	25.191	-20.314			65.672937	80.788778
							863.882930		292.097787	227.769913
							571.784543			571.784543
							× 1/2 = 285.8922715			
15	<sup>-152</sup> 772.813	<sup>-152.760</sup> 12.813	+27.408	<sup>-36</sup> 476.662	<sup>-36.470</sup> 6.662	-15.414			182.592096	199.499592
19	795.497	35.497	+17.967	481.846	11.846	+25.810			212.837082	916.177570
21	790.780	30.780	-27.408	502.472	32.472	+15.414	889.992576			476.442920
14	768.089	8.089	-17.967	497.260	27.260	-25.810	439.780420		208.777090	
							1379.772996		395.429178	406.276672
							984.343818			1390.620490
							× 1/2 = 492.171909			984.343818

# 面積計算書

工区

2

ブロック

23-1

計算者



清算者



備考

7. 保留地

8. 405-72

点	①	②	③	④	⑤	⑥	③ × ⑤		② × ⑥	
	X	X-(定数)	X <sub>n-1</sub> -X <sub>n+1</sub>	Y	Y-(定数)	Y <sub>n-1</sub> -Y <sub>n+1</sub>	+	-	+	-
29	<sup>-152</sup> 797.344	<sup>-152,790</sup> 7.344	+ 6.214	<sup>-36</sup> 507.714	<sup>-36,500</sup> 7.714	- 14.554			47.934796	114.228576
26	799.862	9.862	- 1.175	508.293	8.293	+ 16.695	9.744275			164.646090
8	796.169	6.169	- 6.214	526.409	26.409	+ 15.554	151.677526			95.952626
9	793.648	3.648	+ 1.175	523.847	23.847	- 16.695		28.020225	60.903360	
							111.421801	75.955021	125.131936	260.598716
							85.466789			85.466789
							合筆あり		1/2	42.733390
<del>23</del>	<del><sup>152</sup> 798.157</del>	<del><sup>-152,790</sup> 8.157</del>	<del>- 11.821</del>	<del><sup>-36</sup> 504.166</del>	<del><sup>-36,500</sup> 4.166</del>	<del>+ 1.019</del>	<del>49.246286</del>			<del>8.311983</del>
<del>28</del>	<del>797.344</del>	<del>7.344</del>	<del>+ 10.199</del>	<del>507.714</del>	<del>7.714</del>	<del>+ 6.078</del>		<del>78.675086</del>		<del>44.636832</del>
<del>27</del>	<del>808.356</del>	<del>18.356</del>	<del>+ 11.821</del>	<del>510.244</del>	<del>10.244</del>	<del>- 1.019</del>		<del>121.094324</del>	<del>18.704764</del>	
<del>25</del>	<del>809.165</del>	<del>19.165</del>	<del>- 10.199</del>	<del>506.695</del>	<del>6.695</del>	<del>- 6.078</del>	<del>68.282305</del>		<del>116.484870</del>	
							<del>117.528591</del>	<del>199.769410</del>	<del>135.189634</del>	<del>52.948815</del>
							<del>82.240819</del>	<del>82.240819</del>		
								1/2	41.120409	

# 面積計算書

工区

ノ

ブロック

23-1

計算者



精算者



備考

8-1) 福富 405-72  
8-10) 保

点	①	②	③	④	⑤	⑥	③ × ⑤		② × ⑥	
	X	X-(定数)	X <sub>n-1</sub> -X <sub>n+1</sub>	Y	Y-(定数)	Y <sub>n-1</sub> -Y <sub>n+1</sub>	+	-	+	-
24	-152 800.675	-152.790 10.675	-37 9.303	-37 504.745	-37.500 4.745	-1598		66.142735		17.058650
25	809.165	19.165	7.681	506.695	6.695	+5.499		51.424295		105.398335
27	808.356	18.356	-9.303	510.244	10.244	+1.598		95.299920		29.332888
26	799.862	9.862	7.681	508.293	8.293	-5.499		63.698533		54.231138
								158.998465		95.567030
								71.289788		124.721223
								63.431435		63.431435
								× 1/2 = 31.7157175		合筆あり
23	-152 798.157	-152.790 9.157	-37 +3.33	-37 504.166	-37.500 4.166	-2.969		19.876946		24.218133
24	800.675	10.675	+1.705	504.745	4.745	+4.127		8.090225		44.055725
26	799.862	9.862	-3.33	508.293	8.293	+2.969		27.623983		29.280278
28	797.344	7.344	-1.705	507.714	7.714	-4.127		13.152870		20.308688
								40.996353		21.96717
								54.52682		73.336003
								18.809182		18.809182
								× 1/2 = 9.40459		合筆あり

# 面積計算書

工区

2

ブロック

23-1

計算者



精算者



備考

3. 福富 408-8

4. 福富 410-2

411-1

412-2

413-4

点	①	②	③	④	⑤	⑥	③ × ⑤		② × ⑥	
	X	X-(定数)	X <sub>n-1</sub> -X <sub>n+1</sub>	Y	Y-(定数)	Y <sub>n-1</sub> -Y <sub>n+1</sub>	+	-	+	-
2	-152 820.701	-152.800 20.701	+19.827	-36 460.769	-36.400 60.769	-12.896				
II	839.616	39.616	+15.953	465.062	65.062	+18.705				
4	836.654	36.654	-19.827	479.474	79.474	+12.896	1575.730998			
17	819.789	19.789	-15.953	477.938	77.938	-18.705	1243.366916			
							2819.075912	2242.481989	137.113341	1212.707264
							576.593923			576.593923
							× 1/2 = 288.2919615			
19	-152 795.497	-152.790 5.497	+43.565	-36 481.946	-36.400 1.946	-11.767				
5	834.345	44.345	+38.835	490.725	10.725	+8.942				
K26	834.332	44.332	-9.435	490.788	10.788	+4.162	4692.790			
K27	833.910	43.910	-3.250	494.887	14.887	+20.961	48.382750			
6	831.082	41.082	-43.130	511.729	31.729	+7.585	1368.471770			
21	790.780	0.780	-35.585	502.472	22.472	-29.883	799.666120			
							2221.213420	496.926365	87.881999	1312.169054
							1724.287055			1724.287055
							× 1/2 = 862.1430275			

# 面積計算書

工区

2

ブロック

23-1

計算者



精算者



備考

隅切. I. IV

点	①	②	③	④	⑤	⑥	③ ×	⑤	② ×	⑥
	X	X-(定数)	X <sub>n-1</sub> -X <sub>n+1</sub>	Y	Y-(定数)	Y <sub>n-1</sub> -Y <sub>n+1</sub>	+	-	+	-
I	<sup>-152</sup> 778.637	<sup>-152,770</sup> 8.637	+ 2.398	<sup>-36</sup> 451.266	<sup>-36,460</sup> 1.266	- 1.509		3.035868	13.033233	
1	780.588	10.588	- 0.447	451.707	1.707	+ 1.950	0.763029			20.646600
16	778.190	8.190	- 1.951	453.216	3.216	- 0.441	6.274416		3.611790	
							7.037445	3.035868	16.645023	20.646600
							4.001577			4.001577
								1/2 × 2.0007885		
12	<sup>-152</sup> 765.482	<sup>-152,760</sup> 5.482	- 0.447	<sup>-36</sup> 517.576	<sup>-36,510</sup> 7.576	+ 1.949	3.385578			10.684418
IV	763.530	3.530	- 1.505	517.160	7.160	- 2.383	10.745700		8.411990	
13	763.977	3.977	+ 1.952	515.191	5.191	+ 0.434		10.132832		1.726018
							14.131278	10.132832	8.411990	12.410476
							3.998446			3.998446
								1/2 × 1.999223		

計年  
月  
算日

計  
算  
者



檢  
查  
者



B.NO. 23- / 各筆面積計算書

地番	算式	隅切地	積	摘要
	福富 408-4		451 72 /	
	福富 408-1		899 62 /	
	福富 408-8		288 29 /	
	福富 410 = $\frac{1}{2}$ 412 = $\frac{1}{2}$ 411 = 1 413 = 4		862 14 /	
	福富 413-5		462 22 /	
}	福富 405-18		143 97 /	<p>195.68</p> <p>196.47</p> <p>保. 2-23-1 52.13</p>
	保留地 1%		42 93 /	
	福富 405-92		31 71 /	
	保留地 1%		9 40 /	
	福富 408-600		96 02 /	
	福富 413-11		242 19 /	
	福富 413-1		285 89 /	
	福富 413-2		492 17 /	
	計		4308 07 /	
	全体		4308 12 /	
	差		0 05 /	
	換地面積		4255 96 /	
	保留地		52 13 /	