

BLOCK NO. 23-2

街区計算

街区略図

工区

Z

ブロック

Z3-Z

記入者



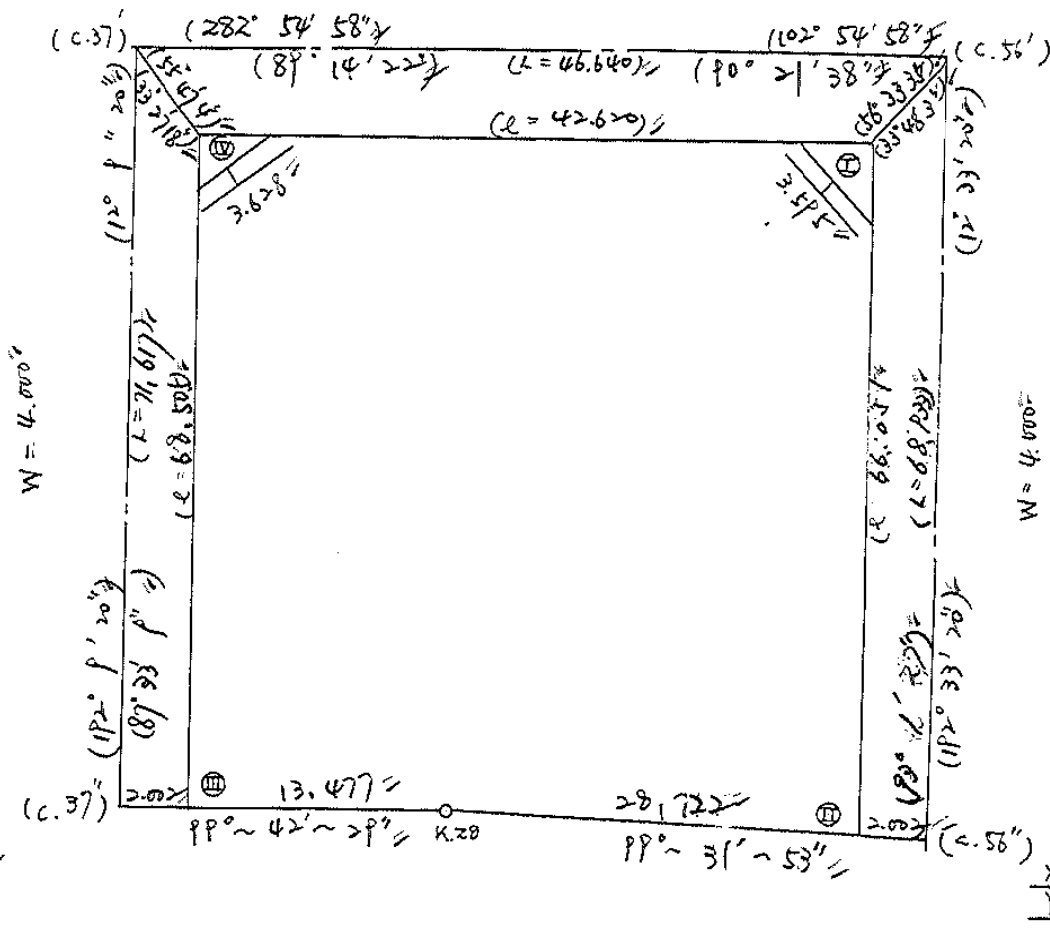
点検者



$$\begin{aligned} X &= -152,749.730 \\ Y &= -36,563.847 \end{aligned}$$

$$W = 6.000$$

$$\begin{aligned} X &= -152,760.155 \\ Y &= -36,518.437 \end{aligned}$$

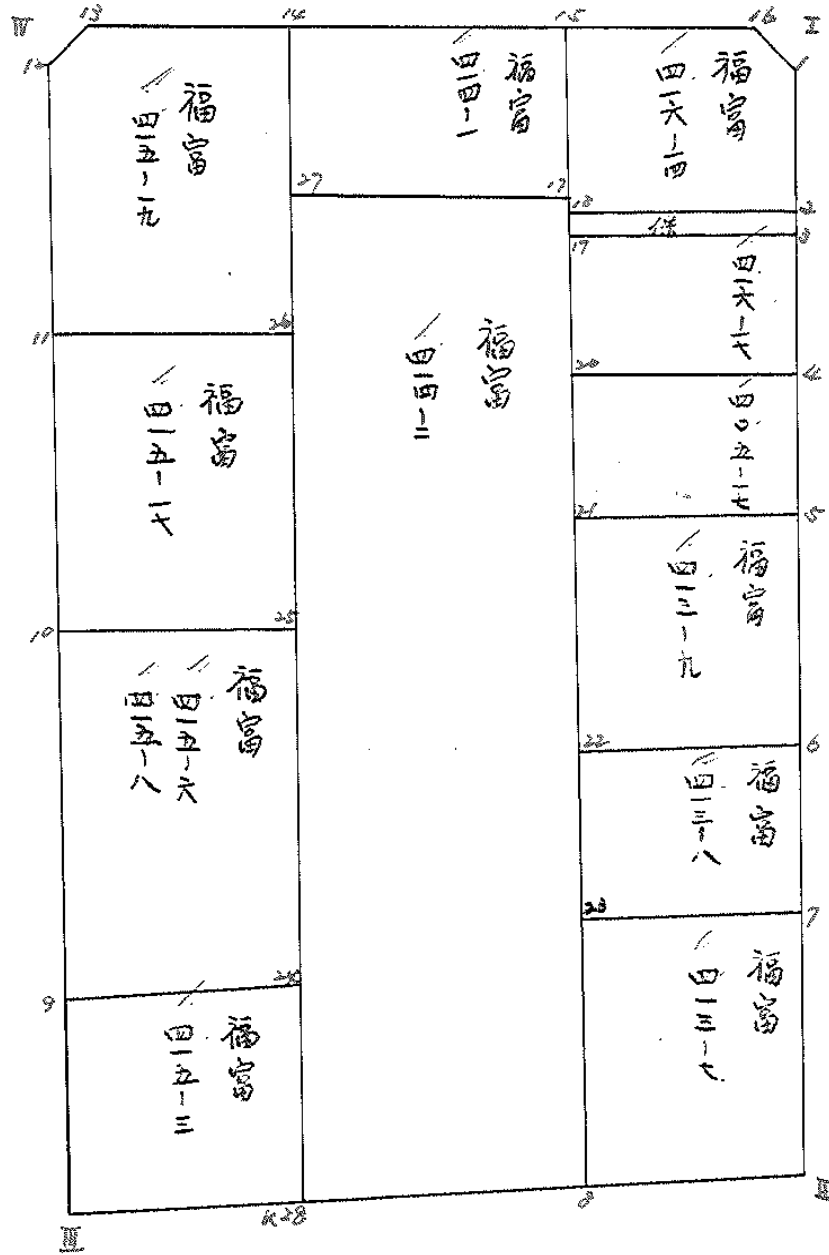


$$\begin{aligned} X &= -152,819.741 \\ Y &= -36,578.179 \end{aligned}$$

$$\begin{aligned} X &= -152,827.400 \\ Y &= -36,533.422 \end{aligned}$$

面地計算

BNO. 23-2



面積計算書						工区	ブロック	計算者	精算者	備考	補償
						2	23-2				416-14
点	①	②	③	④	⑤	⑥	③	⑤	②	⑥	
	X	X-(定数)	X _{n-1} -X _{n+1}	Y	Y-(定数)	Y _{n-1} -Y _{n+1}	+	-	+	-	
16	-152,762.189	-152,700 62.189	+ 4.835	-36,522.989	-36,500 22.989	-12.137		111.151815	754.787893		
1	-152,764.588	64.588	+ 10.521	-36,521.474	21.474	+ 0.293		225.227954		18.924284	
2	-152,772.710	72.710	+ 5.251	-36,523.282	23.282	+ 14.364		122.253782		1044.406440	
18	-152,769.839	69.839	- 12.957	-36,535.838	35.838	+ 10.329	464.352966			721.367031	
15	-152,759.753	59.753	- 7.650	-36,533.611	33.611	- 12.849	257.124150		767.766297		
							721.477116	459.333551	1522.554190	784.697755	
							262.143565			262.143565	
									1/2	131.0717825	
2	-152,772.710	-152,700 72.710	+ 4.002	-36,523.282	-36,500 23.282	- 12.304		72.174564	894.623840		
3	-152,773.841	73.841	- 1.747	-36,523.534	23.534	+ 12.804	41.113898			945.460664	
19	-152,770.963	70.963	+ 4.002	-36,536.086	36.086	+ 12.304	144.416172			873.128752	
18	-152,769.839	69.839	+ 1.747	-36,535.838	35.838	- 12.804		62.608286	894.218556		
							125.530070	155.783550	1788.842396	1818.588916	
							29.746520			29.746520	
									1/2	14.873260	

面積計算書						工区	ブロック	計算者	精算者	備考
						2	23-2			416-17 405-17
点	①	②	③	④	⑤	⑥	③	⑤	②	⑥
	X	X-(定数)	X _{n-1} -X _{n+1}	Y	Y-(定数)	Y _{n-1} -Y _{n+1}	+	-	+	-
3	-152,773.841	-152,700 73.841	+ 11.591	-36,523.534	-36,500 23.534	- 10.611			272.782594	703.526841
4	-152,782.554	82.554	+ 5.861	-36,525.475	25.475	+ 14.481			149.208975	11.95.464474
20	-152,779.702	79.702	- 11.591	-36,538.015	38.015	+ 10.611	440.631865			845.717922
19	-152,770.963	70.963	- 5.861	-36,536.036	36.036	- 14.481	211.500026		1027.615203	
							652.131911	422.091569	1811.142054	2041.182396
							230.040342			230040342
									1/2 = 115.020171	
4	-152,782.554	-152,700 82.554	+ 10.023	-36,525.475	-36,500 25.475	- 10.943			265.325925	903.388422
5	-152,789.725	89.725	+ 4.343	-36,527.072	27.072	+ 14.129			117.523696	1267.724525
21	-152,786.897	86.897	- 10.023	-36,539.604	39.604	+ 10.943	396.950892			950.913871
20	-152,779.702	79.702	- 4.343	-36,538.015	38.015	- 14.129	165.099165		1126.109458	
							562.050037	372.909621	2029.497980	2218.638396
							189.140416			189.140416
									1/2 = 94.570208	

面積計算書		工区	ブロック	計測者	精算者	備考		
		2	23-2			福岡 418-9 " 418-8		
点	①	②	③	④	⑤	⑥	③ × ⑤	② × ⑥
	X	X-(定数)	X _{n-1} -X _{n+1}	Y	Y-(定数)	Y _{n-1} -Y _{n+1}	+ -	+ -
5	152,789.725	-152,700 89.725	+16.641	-36,527.072	-36,500 27.072	-9.590	434.26195	860.46275
6	152,802.938	102.938	+10.422	-36,530.014	30.014	+15.457	312.80590	1591.11266
22	152,800.147	100.147	-16.641	-36,542.529	42.529	+9.590	602.20769	960.40973
21	152,786.897	86.897	-10.422	-36,539.604	39.604	+15.457	412.75288	1343.16692
							1094.96057	747.06786
							2203.62967	2551.52209
							347.89271	347.89271
							1/2 = 173.94635	
6	152,802.938	-152,800 2.938	+12.258	-36,530.014	-36,530 0.914	-10.406	0.17161	30.57282
7	152,812.405	12.405	+6.697	-36,532.123	2.123	+14.610	14.21773	181.23705
23	152,809.635	9.635	-12.258	-36,544.624	14.624	+10.406	179.26099	100.26181
22	152,800.147	0.147	-6.697	-36,542.529	12.529	-14.610	83.90671	2.14767
							263.16770	14.38934
							32.72049	281.49886
							248.77836	248.77836
							1/2 = 124.38918	

面積計算書						工区	ブロック	計算者	備考	福富
						2	23-2			418-7 414-2
点	①	②	③	④	⑤	⑥	③ × ⑤	② × ⑥		
	X	X-(定数)	X _{n-1} -X _{n+1}	Y	Y-(定数)	Y _{n-1} -Y _{n+1}	+ -	+ -		
7	-152,812.405	-152,800 12.405	+ 17.473	-36,532.123	-36,530 2.123	- 9.227		37.095179, 114.460935,		
II	-152,827.108	29.108	+ 12.584	-36,535.397	5.397	+ 15.891		67.915848, 430.773228,		
8	-152,824.989	24.989	- 17.473	-36,548.014	18.014	+ 9.227	314.758.622,	230.573503,		
23	-152,809.635	9.635	- 12.584	-36,544.624	14.674	- 15.891	134.028416,	153.109785,		
							498.787038, 105.011027,	267.570720, 661.346731,		
							393.776011,	393.776011,		
								1/2 = 196.888055,		
8	-152,824.989	-152,700 124.989	+ 53.422	-36,542.014	-36,530 19.014	+ 28.085		962.743908, 3510.316065,		
158	-152,822.352	122.352	- 59.627	-36,562.722	33.722	+ 3.171	2010.741694,	387.978192,		
27	-152,765.362	65.362	- 53.422	-36,551.185	21.185	- 28.085	1131.745070,	1234.691770,		
17	-152,768.930	68.930	+ 59.627	-36,535.637	5.637	- 3.171		336.117399, 218.577030,		
							3142.486764, 1298.461307,	2054.268800, 3898.294257,		
							1844.025457,	1844.025457,		
								1/5 = 368.805091,		

面積計算書

工区 23-2
 計算者 福富 415-17
 精算者 415-6, 415-8
 備考

点	①	②	③	④	⑤	⑥	③ × ⑤	② × ⑥
	X	X-(定数)	X _{n-1} -X _{n+1}	Y	Y-(定数)	Y _{n-1} -Y _{n+1}	+ -	+ -
		-152,770			-36,550			
10	-152,787.083	17.083	-16.867	-36,567.899	19.899	+ 10.289	335.626433	175.766987
11	-152,773.121	3.171	-11.043	-36,566.872	16.892	- 16.365	186.538356	51.075165
26	-152,776.040	6.040	+ 16.867	-36,553.534	3.534	- 10.289	59.607978	62.145560
25	-152,789.988	19.988	+ 11.043	-36,556.603	6.603	+ 16.365	72.916929	327.103620
							122.174709	132.524907
							389.649887	389.649887
							1/2 = 194.824944	
		-152,700			-36,550			
9	-152,807.496	107.496	- 23.304	-36,574.296	24.296	+ 8.809	566.193924	945.932264
10	-152,787.083	87.083	- 17.508	-36,569.899	19.899	- 17.693	348.391692	1540.759519
25	-152,789.988	89.988	+ 23.304	-36,556.603	6.603	- 8.809	153.876312	792.704292
24	-152,810.387	110.387	+ 17.508	-36,561.090	11.090	+ 17.693	194.163720	1943.07191
							916.585676	348.020032
							566.545664	2333.463811
								2900.509455
								566.545664
								1/2 = 283.272822

2-7

面積計算書						工区	ブロック	計測者	精算者	備考
						2	23-2			福富 414-1 415-1P
点	①	②	③	④	⑤	⑥	③	⑤	②	⑥
	X	X-(定数)	X _{n-1} -X _{n+1}	Y	Y-(定数)	Y _{n-1} -Y _{n+1}	+	-	+	-
15	-152,757.753	-152,700 59.753	+ 12.744	-36,533.611	-36,500 33.611	- 13.530			422.332504	802.458090
17	-152,768.930	68.930	+ 5.609	-36,535.637	35.637	+ 17.474			199.287933	1211.375820
27	-152,765.862	65.862	- 12.744	-36,551.185	51.185	+ 13.530	642.301640			884.347860
14	-152,756.186	56.186	- 5.609	-36,549.167	49.167	- 17.474	275.777703			887.412764
							928.079343	628.226517	1795.870242	2095.723680
							299.852826			299.852826
									1/2 = 149.926413	
11	-152,773.121	-152,750 23.121	- 20.976	-36,566.892	-36,540 26.892	+ 9.468	564.086592			218.909628
12	-152,755.064	5.064	- 19.564	-36,563.002	23.002	- 6.260	450.011128			31.700640
13	-152,752.557	3.557	+ 1.122	-36,560.632	20.632	- 13.825			23.149104	49.211095
14	-152,756.186	6.186	+ 22.483	-36,549.167	9.167	- 7.098	205.101661			43.900228
26	-152,776.040	26.040	+ 16.935	-36,553.534	13.534	+ 17.725	229.198290			261.559000
							1014.097720	458.449055	124.819963	680.468628
							555.648665			555.648665
									1/2 = 277.8243325	

面積計算書

工区

2

ブロック

23-2

計算者



精算者



備考

陽2刀

点	①	②	③	④	⑤	⑥	③ × ⑤		② × ⑥	
	X	X-(定数)	X _{n-1} -X _{n+1}	Y	Y-(定数)	Y _{n-1} -Y _{n+1}	+	-	+	-
		-152,760			-36,520					
I 16	-152,762.189	2.189	-1.952	-36,522.989	2.989	-0.435	5.234528		0. Pt2 > 15	
I I	-152,762.636	2.636	+2.399	-36,521.039	1.039	-1.515		2.492561	3.993540	
I 1	-152,764.588	4.588	-0.447	-36,521.474	1.474	+1.950	0.658878			2.946600
							6.493406	2.492561	4.945755	2.946600
							4.000845			4.000845
									1/2 = 2.0004225	
		-152,750			-36,560					
IV 10	-152,753.110	3.110	+1.567	-36,562.581	2.581	+2.370		3.289567		7.370700
IV 12	-152,755.064	5.064	+0.447	-36,562.002	3.002	-1.949		1.341894	9.269736	
IV 13	-152,753.557	3.557	-1.954	-36,560.602	0.602	0.421	1.234928		1.497497	
							1.234928	5.231461	11.367233	7.370700
									3.996533	3.996533
									1/2 = 1.9982665	

計年月
算日

計算者



検査者



B. NO. 23-2

各筆面積計算書

地番	算式	隅切	地積	摘要
	福富 416914		131.07	
	保 2-23 ² -1		14.87	
	福富 416917		115.02	
	福富 405917		94.57	
	福富 41399		173.94	
	福富 41398		124.38	
	福富 41397		196.88	
	福富 41492		922.01	
	福富 41593		169.46	
	福富 41596		280.27	
	福富 41598		194.82	
	福富 415917		277.82	
	福富 415919		149.92	
	福富 41491		2,848.03	
	計		2,848.09	
	全体		0.06	
		差		
	換地		2,833.16	
	保留地		14.87	