

BLOCK NO. 26

街区計算

街区略図

工区

Z

ブロック

Z6

記入者



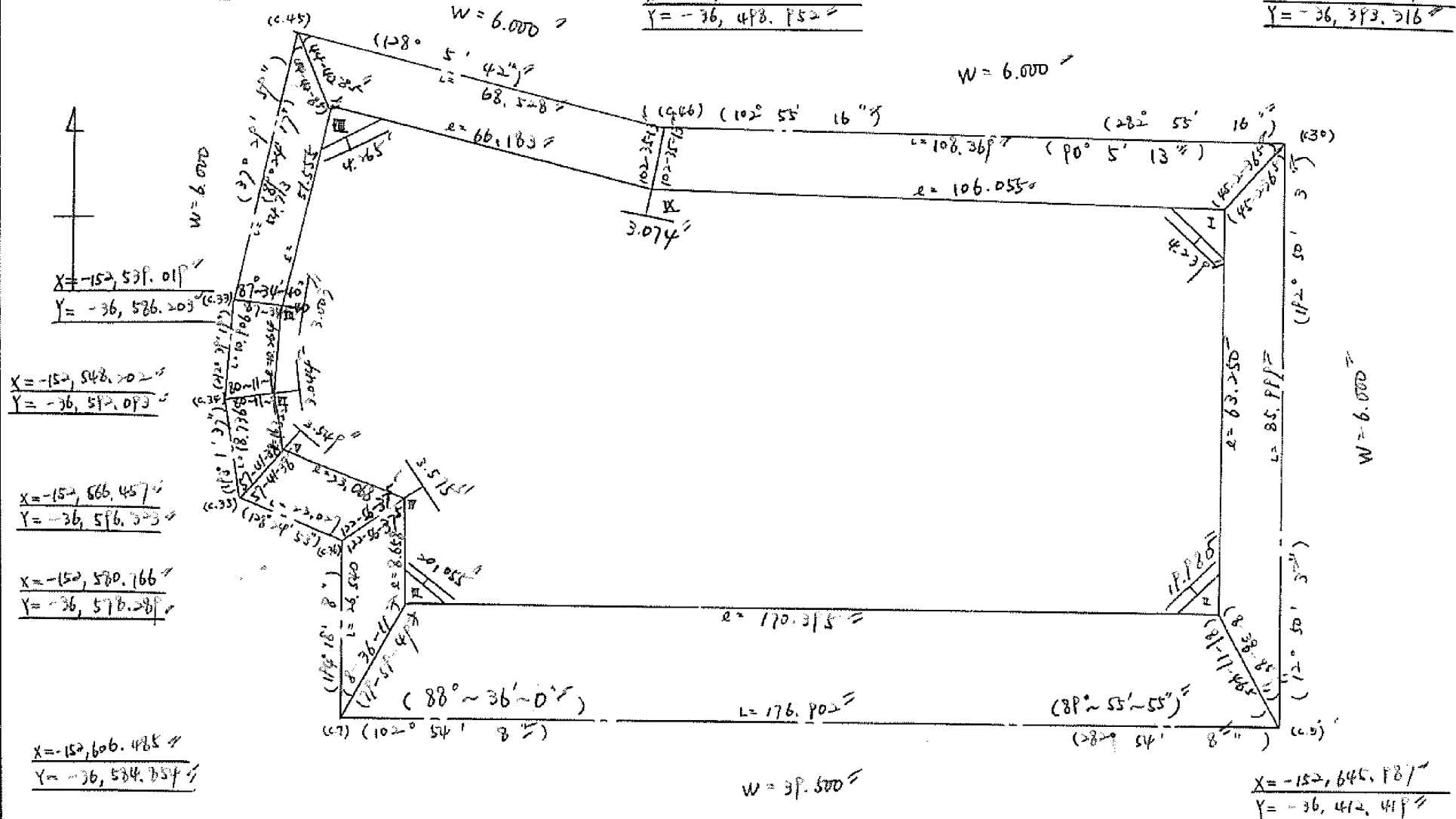
点検者



$$\begin{aligned} X &= -152, 415.61 \text{ 寸} \\ Y &= -36, 552.816 \text{ 寸} \end{aligned}$$

$$\begin{aligned} X &= -152, 537.90 \text{ 寸} \\ Y &= -36, 498.952 \text{ 寸} \end{aligned}$$

$$\begin{aligned} X &= -152, 562.137 \text{ 寸} \\ Y &= -36, 393.216 \text{ 寸} \end{aligned}$$



$$\begin{aligned} X &= -152, 542.202 \text{ 寸} \\ Y &= -36, 512.093 \text{ 寸} \end{aligned}$$

$$\begin{aligned} X &= -152, 666.457 \text{ 寸} \\ Y &= -36, 596.523 \text{ 寸} \end{aligned}$$

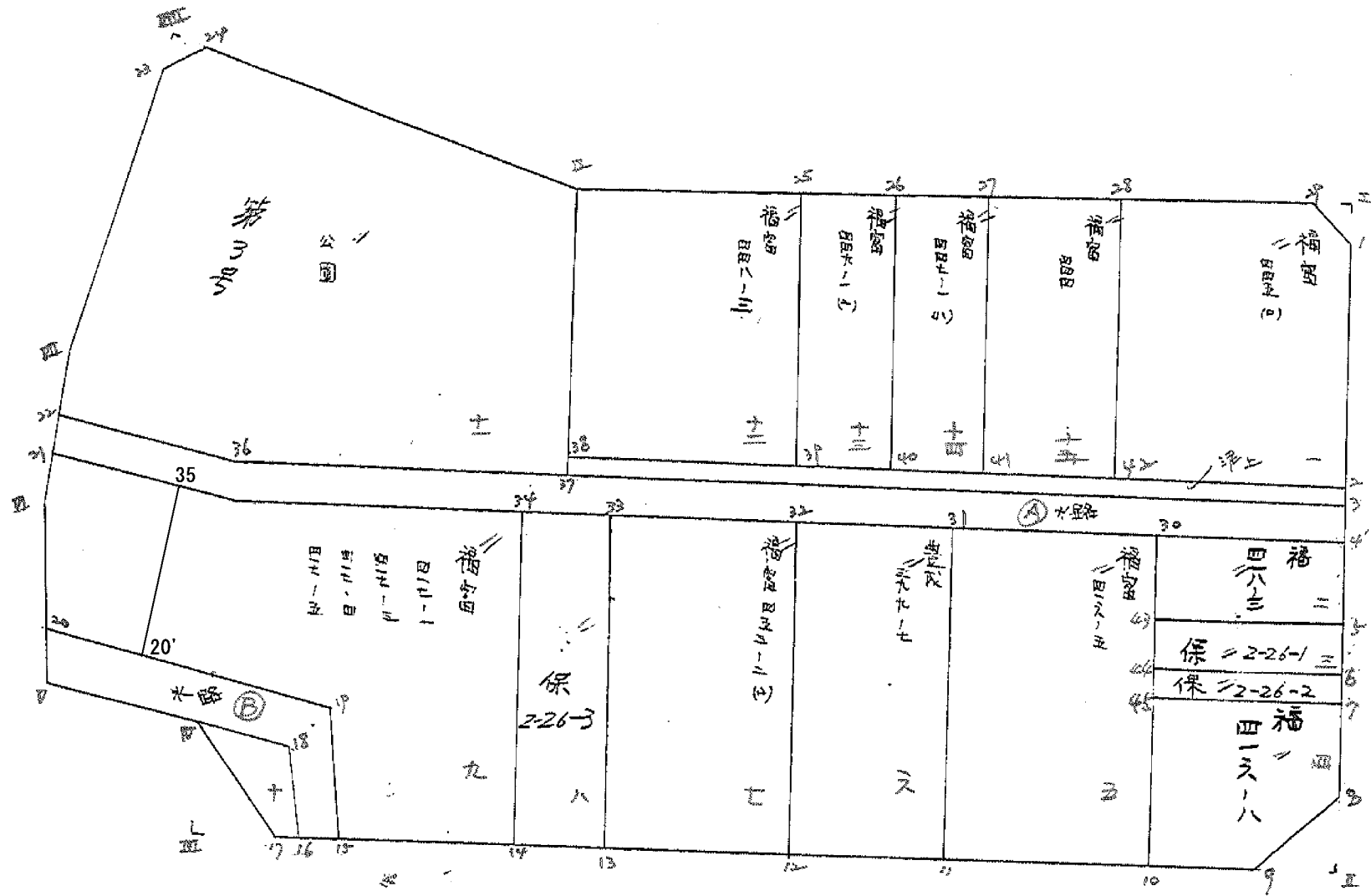
$$\begin{aligned} X &= -152, 580.766 \text{ 寸} \\ Y &= -36, 578.289 \text{ 寸} \end{aligned}$$

$$\begin{aligned} X &= -152, 606.485 \text{ 寸} \\ Y &= -36, 584.754 \text{ 寸} \end{aligned}$$

$$W = 39,500$$

$$\begin{aligned} X &= -152, 645.987 \text{ 寸} \\ Y &= -36, 442.419 \text{ 寸} \end{aligned}$$

面地計算



面積計算書						工区	ブロック	計算者	精算者	備考
						ズ	26			福富 445(10) ズ福富 418-3
点	①	②	③	④	⑤	⑥	③ × ⑤		② × ⑥	
	X	X-(定数)	X _{n-1} -X _{n+1}	Y	Y-(定数)	Y _{n-1} -Y _{n+1}	+	-	+	-
29	⁻¹⁵² 563.720	^{-152, 550} 13.720	+ 9.731	⁻³⁶ 397.830	^{-36, 390} 9.830	- 29.002				
1	567.316	17.316	+ 29.920	397.572	7.572	+ 3.740				
2	593.640	43.640	+ 19.510	403.570	13.570	+ 35.701				
42	586.826	36.826	36.055	433.273	43.273	+ 23.004	1560.208015			
28	557.525	7.525	- 23.106	426.574	36.574	- 33.443	845.078844			
							2405.286859	586.960670	651.572595	2,469.898784
							1,818.326189			1,818.326189
									$\frac{1}{2} = 909.1630945$	
4	⁻¹⁵² 596.078	^{-152, 590} 6.078	+ 12.419	⁻³⁶ 404.125	^{-36, 400} 4.125	- 18.307				
5	603.889	13.889	+ 3.201	405.905	5.905	+ 21.874				
43	599.279	9.279	- 12.419	425.999	25.999	+ 18.307	322.881581			
30	591.670	1.670	- 3.201	424.212	24.212	- 21.874	77.502612			
							400.384931	70.130780	143.424976	423.678639
							330.253913			330.253913
									$\frac{1}{2} = 165.1269565$	

面積計算書

工区

Z

ブロック

26

計算者



精算者



備 小福富 416.15
考 大豊成 399.7

12-3 面積計算書

12-3 面積計算書

点	①	②	③	④	⑤	⑥	③ × ⑤		② × ⑥	
	X	X-(定数)	X _{n-1} -X _{n+1}	Y	Y-(定数)	Y _{n-1} -Y _{n+1}	+	-	+	-
30	-152. 591.470	-152.180 11.470	+36.425	-36 424.212	-36.420 4.212	-21.223			153.422100	243.427810
10	621.452	41.452	+23.547	431.073	11.073	+34.952			260.735931	1,448.830304
11	615.017	35.017	-36.425	459.164	29.164	+21.223	1,426.548700			743.165791
31	585.027	5.027	-23.547	452.296	32.296	-34.952	960.473912			175.703704
							2,187.022612	414.158031	-419.131514	2,191.996095
							1,772.864581			1,772.864581
										$\frac{1}{2} = 886.4322905$
31	-152 585.027	-152.180 5.027	+34.037	-36 452.296	-36.450 2.296	-10.771			78.148952	54.145817
11	615.017	35.017	+25.948	459.164	9.164	+24.513			237.787472	858.371721
12	610.975	30.975	-34.037	476.809	26.809	+10.771	912.497933			333.631725
32	580.980	0.980	-25.948	469.935	19.935	-24.513	517.273380			240.22740
							1,429.771313	315.936424	78.168557	1,197.003446
							1,113.834889			1,113.834889
										$\frac{1}{2} = 556.9174445$

面積計算書

工区

2

ブロック

26

計算者



精算者



備考

福富 453-2(17)
床保 2-26-3

点	①	②	③	④	⑤	⑥	③	×	⑤	②	×	⑥
	X	X-(定数)	X _{n-1} -X _{n+1}	Y	Y-(定数)	Y _{n-1} -Y _{n+1}	+	-	+	-		
32	⁻¹⁵² 582.980	^{-152, 470} 10.980	+37.176	⁻³⁶ 469.935	^{-36, 460} 9.935	-24.428			367.343560	268.219440		
12	610.975	40.975	+22.822	476.809	16.809	+38.185			383.614998			1,564.630375
13	603.802	33.802	-37.176	508.120	48.120	+24.428	1,788.909120					825.715256
33	573.799	3.799	-22.822	501.237	41.237	-38.185			941.110814	145.064815		
							7,730.019934	757.958558	413.284255	2,390.345631		
							1,977.061376					1,977.061376
									$\frac{1}{2} = 988.530688$			
33	⁻¹⁵² 573.799	^{-152, 470} 3.799	+33.160	⁻³⁶ 501.237	^{-36, 500} 1.237	-6.879			41.018920	26.133321		
13	603.802	33.802	+26.849	508.120	8.120	+20.646			218.013880			697.876082
14	600.648	30.648	-33.160	521.883	21.883	+6.879	725.640280					210.827592
34	570.642	0.642	-26.849	514.999	14.999	-20.646			402.708151	13.254782		
							1,128.348431	259.032800	39.388053	908.703684		
							869.315631					869.315631
									$\frac{1}{2} = 434.6578155$			

測量士事務所

未

12-5

面積計算書		工区	2	ブロック	26	計算者	筒井 啓	備考	9.福富	47-1,-3 -4,-5
点	①	②	③	④	⑤	⑥	③ × ⑤	② × ⑥		
	X	X-(定数)	X _{n-1} -X _{n+1}	Y	Y-(定数)	Y _{n-1} -Y _{n+1}	+	-		
34	-152 570.642	-152.540 30.642	+43.550	-36 546.999	-36.500 14.999	-52.196	653.356440	1599.389832		
14	600.648	60.648	+20.974	521.893	21.893	+46.312	448.974042	2808.730176		
15	591.616	51.616	-17.343	561.311	61.311	+40.335	1063.316673	2081.931360		
19	583.305	43.305	-31.719	562.218	62.218	+30.413	1973.492742	1317.034985		
20	559.897	19.897	-33.921	591.724	91.724	+27.070	3111.369804	538.611790		
21	549.384	9.384	-13.699	589.288	89.288	-4.481	1223.156312	42.049704		
21	546.198	6.198	+7.704	587.243	87.243	-15.209	672.120072	94.265382		
25	557.088	17.088	+24.444	574.079	74.079	-72.244	1810.787076	1234.565672		
							737.335531	23595.237330	2770.210390	6746.308291
							3776.097901			3776.097901
							x/2 = 1888.0489505			

座標法面積計算 (417-1)

測点	X	Δx	Y	Δy	(+) F ₁ $\Delta x \cdot \Delta y$	(-) F ₂ $\Delta x \cdot \Delta y$
20	566.920		582.871			
19	583.305	+16.385	562.218	+1145.089	18762.2832	
15	591.616	+8.311	561.311	+1123.529	9337.6495	
14	600.648	+9.032	521.883	+1083.194	9783.4082	
24	570.642	-30.006	514.999	+1036.882		31112.6812
25	557.088	-13.554	574.079	+1089.078		14761.2632
20	566.920	+9.832	582.871	+1156.950	11375.1324	
-	-	-	-	-		
-	-	-	-	-		
-	-	-	-	-		
-	-	-	-	-		
-	-	-	-	-		
-	-	-	-	-		
-	-	-	-	-		
-	-	-	-	-		
-	-	-	-	-		
-	-	-	-	-		
				$\bar{z} =$	49258.4733	45874.0444
				$F = (F_1) \sim (F_2) =$		3384.4289
計算者				$F / 2 =$	分筆後の座標なし	1692.21445
点検者				$\times 0.3025 =$		1692.22

面積計算書						工区	2	ブロック	26	計算者	精算者	備考	10 (道路敷)	11 公園	3号
点	①	②	③	④	⑤	⑥	③ × ⑤	② × ⑥							
	X	X-(定数)	X _{n-1} -X _{n+1}	Y	Y-(定数)	Y _{n-1} -Y _{n+1}	+	-	+	-					
16	⁻¹⁵² 590.418	^{-152,500} 90.418	+ 4.100	⁻²⁶ 566.538	^{-36,560} 6.538	+ 1.484		26.805800		134180312					
17	589.964	89.964	- 10.795	568.519	8.519	+ 8.364	91.962605			257459896					
18	579.623	79.623	- 4.100	574.902	14.902	- 1.484	61.098200		118.160532						
	585.864	85.864	+ 10.795	567.035	7.035	- 8.364		75.942825	718.166496						
							153.060805	107.748625	836.327028	886.639208					
							50.312180			50.312180					
							× 1/2 = 25.156090								
IX	⁻¹⁵² 540.678	^{-152,500} 40.678	+ 69.196	⁻²⁶ 500.276	^{-36,500} 0.276	- 42.792		19.098096	1740.607392						
27	570.890	70.890	+ 15.038	507.208	7.208	+ 73.080		108.893904		5180.641200					
28	555.714	55.714	- 25.981	573.356	73.356	+ 79.209	1,945.862236			4413.050226					
22	544.909	44.909	- 14.969	586.617	86.617	+ 10.389	2,293.596077			466.559601					
VII	540.745	40.745	- 42.686	583.745	83.745	- 37.230	3,574.739070		1,313.211350						
23	502.223	2.223	- 39.051	554.187	54.187	- 33.745	2,116.056537		75.015135						
24	501.694	1.694	+ 38.453	550.000	50.000	- 53.911		1,922.650006	91.325234						
							8,890.233916	72,050.142006	3,720.159111	10,060.251027					
							6,840.091916			6,840.091916					
							1/2 = 3,420.045958								

面積計算書

工
区

2

ブ
ロ
ック

26

計
算
者



精
算
者



備
考

12
福
富

448-3 (甲)
449-1 (乙)

点	①	②	③	④	⑤	⑥	③ × ⑤	② × ⑥		
	X	X-(定数)	X _{n-1} -X _{n+1}	Y	Y-(定数)	Y _{n-1} -Y _{n+1}			+	-
25	-152 549.801	-152, 540 9.801	+38.366	-36 460.500	-36, 460 0.500	-33.076		19.183000	324.177876	
39	579.042	39.042	+20.114	467.200	7.250	+46.484		144.870800	1814.828328	
38	569.915	29.915	-38.366	506.984	46.984	+33.076	1,802.588144		989.468540	
Ⅹ	540.676	0.676	-20.114	500.276	40.276	-46.484	810.111464		31.423184	
							2,617.699608	164.003800	355.601060	2804.296868
							2,448.695808			2448.695808
										$\frac{1}{2} = 1,224.347904$
26	-152 552.686	-152, 540 12.686	+32.127	-36 447.924	-36, 440 7.924	-5.877		254.674348	74.555622	
40	581.928	41.928	+26.356	454.623	14.623	+19.276		385.403188	808.204128	
39	579.042	39.042	-32.127	467.200	27.200	+5.877	8738.54400		229.449834	
25	549.801	9.801	-26.356	460.500	20.500	-19.276	540.298000		188.924076	
							1,414.152400	639.978126	263.479698	1,037.653962
							774.174264			774.174264
										$\frac{1}{2} = 387.087132$

(三) 不明



(三) 不明

面積計算書						工区	ブロック	計測者	縮尺者	備考
						2	26			14 福富 447-141 15 福富 444
点	①	②	③	④	⑤	⑥	③ × ⑤		② × ⑥	
	X	X-(定数)	X _{n-1} -X _{n+1}	Y	Y-(定数)	Y _{n-1} -Y _{n+1}	+	-	+	-
27	-152 554.520	-152.550 4.520	+31.076	-36 439.930	-36.630 9.930	-1.295			309.594600	5.853600
41	593.762	33.762	+27.408	446.629	16.629	+14.693			485.767632	491.065266
40	591.928	31.928	-31.076	454.623	24.623	+1.295			765.186368	41.366760
26	552.686	2.686	-27.408	447.926	17.926	-14.693			491.260992	
									1256.465710	764.352312
									492.093028	537.411926
										492.093028
									× 1/2 = 246.046514	
28	-152 557.585	-152.550 7.585	+32.306	-36 426.574	-36.620 6.574	-8.657			212.379644	50.493345
42	596.826	36.826	+26.177	433.273	13.273	+20.055			347.467321	739.545630
41	593.762	33.762	-32.306	446.629	26.629	+6.657			860.276674	224.253634
27	554.520	4.520	-26.177	439.930	19.930	-20.055			621.707610	90.648600
									1391.984084	659.926965
									141.14945	963.299064
									822.157119	822.157119
									× 1/2 = 411.0785595	

面積計算書						工区	2	ブロック	26	計算者	精算者	備考	水路 (A) 泥上げ
項	①	②	③	④	⑤	⑥	③	×	⑤	②	×	⑥	
	X	X-(定数)	X _{n-1} -X _{n+1}	Y	Y-(定数)	Y _{n-1} -Y _{n+1}	+		-	+		-	
152	594.616	-152,540	+40.364	403.792	-36,400	-169.231							
16	596.078	56.078	-37.528	404.125	4.125	+170.287	154.803000					9549.354386	
17	597.088	17.088	-49.880	596.079	174.079	+183.118	8,683,060570					3,29,120384	
21	546.198	6.198	-12.199	587.243	187.243	+12.338	2,280.432497					76.470974	
22	644.909	4.909	+9.516	586.417	186.417	-13.887		1,773,944172	68.171283				
36	555.714	15.714	+49.707	573.356	173.356	-182.625		8,619,006692	2869.769250				
										11,118.296017	70,544.011152	12,180.660829	12,754.945694
										574.284865			574.284865
										$\frac{1}{2} = 287.1424325 =$			
152	593.640	-152,560	+24.701	403.570	-36,400	-103.192							
16	594.616	34.616	-22.750	403.792	3.792	+103.638	86,268000					3587.533008	
17	590.890	10.890	-24.701	507.208	107.208	+103.192	2,648.144808					1,123.760880	
38	569.915	9.915	+22.750	506.904	106.904	-103.638		2,433.886000	1,027.570770				
										2,734.412808	2,522.068570	4,498.949650	4,711.293888
										212.344238			212.344238
										$\frac{1}{2} = 106.172119 =$			

面積計算書						工区	ブロック	計算者	潜算者	備考
						2	26			木路 (E)
点	①	②	③	④	⑤	③ × ⑤		② × ⑥		
	X	X-(定数)	X _{n-1} -X _{n+1}	Y	Y-(定数)	+	-	+	-	
15	591.616	41.616	+7.113	581.311	1.311		9.325143		179.781120	
16	590.418	40.418	-5.752	566.538	6.538	37.606576			231.352632	
18	585.864	35.864	-10.795	567.035	7.035	75.942825			299.966496	
17	579.623	29.623	-20.579	574.902	14.902	306.668258			768.361374	
17	565.285	15.285	-19.726	592.973	32.973	652.425098			257.124270	
20	559.897	9.897	+18.020	591.724	21.724		571.666480	304.382225		
19	583.305	23.305	+31.719	567.218	2.218		70.352742	1012.904965		
							1070.643057	651.342365	1317.287200	1736.585892
							419.298692			419.298692
							× 1/2 = 209.649346			

面積計算書		工区	2	ブロック	26	計算者	精算者	備考	既切工, II		
点	①	②	③	④	⑤	⑥	③	⑤	②	⑥	
	X	X-(定数)	X _{n-1} -X _{n+1}	Y	Y-(定数)	Y _{n-1} -Y _{n+1}	+	-	+	-	
I	⁻¹⁵² 564.391	^{-152/560} 4.391	+ 3.596	⁻³⁶ 396.906	^{-36/390} 6.906	- 2.258			24.833976	9.914878	
1	657.316	7.316	- 0.671	397.572	7.572	+ 2.924	5.080812				21.391984
29	563.720	3.720	- 2.925	399.830	9.830	- 0.666	22.752750		2.477520		
							23.833562	24.833976	12.392398		21.391984
							8.999586				8.999586
									1/2 = 4.499793		
8	⁻¹⁵² 617.529	^{-152/610} 7.529	+ 1.954	⁻³⁶ 409.012	^{-36/400} 9.012	- 8.529			17.609448	16.214841	
II	626.061	16.061	+ 6.578	409.956	10.956	+ 10.473			72.068568		168.206253
9	624.107	14.107	- 2.532	419.425	19.425	- 1.944	166.246020		27.424008		
							166.246020	29.678016	91.638749	168.206253	
							76.568004				76.568004
									1/2 = 38.284002		

面積計算書		工区	2	ブロック	26	計算者		精算者		備考	隅切ⅣⅣ	
点	①	②	③	④	⑤	⑥	③	×	⑤	②	×	⑥
	X	X-(定数)	X _{n-1} -X _{n+1}	Y	Y-(定数)	Y _{n-1} -Y _{n+1}	+		-	+		-
23	⁻⁵² 502.223	^{-152,490} 12.223	1.841	⁻³⁶ 554.187	^{-36,510} 4.187	+ 2.361	7.750137					28.248503
Ⅳ	499.863	9.843	-0.529	552.361	2.361	-4.127	1.248969			41.212641		
24	501.694	11.694	+2.380	550.000	0.000	+ 1.826			0.000000			21.353246
									8.999106 = 0.000000	41.212641		20.211747
									8.999106			8.999106
										1/2 = 4.499553		
17	⁻¹⁰² 589.964	^{-152,670} 19.964	+8.388	⁻³⁶ 568.519	^{-36,560} 8.519	+2.146				71.457372		42.842744
Ⅲ	588.011	18.011	-10.341	577.048	17.048	+6.383	176.293368					114.964213
Ⅱ	579.623	9.623	+1.953	574.902	14.902	-8.529				29.103606		82.074567
										176.293368		100.560978
										22.074567		57.806957
										75.732890		75.732890
										x/2 = 37.866195		

面積計算書

工
区

2

ブ
ロ
ック

26

計
算
者

(印
番)

新
算
者

(印
番)

備
考

保 2-26-1
保 2-26-2

点	①	②	③	④	⑤	⑥	③ × ⑤		② × ⑥	
	X	X-(定数)	X _{n-1} -X _{n+1}	Y	Y-(定数)	Y _{n-1} -Y _{n+1}	+	-	+	-
5	⁻¹⁵² 603.88P =	^{-152, +90} 12.82P = + 7.318		⁻³⁶ 405.905	^{-36, 400} 4.905 = - 19.477				43.212790	270.516243
6	606.5PP =	16.499 = - 1.898		406.522	6.422 = + 20.715				12.378756	343.848284
44	601.991 =	11.991 = - 7.318 =		426.620 =	26.620 = + 19.477				194.804160	233.548707
43	5PP.281 =	9.281 = + 1.898		425.999 =	24.999 = - 20.715				49.346102	192.255915
									207.183916	92.558892
									462.771968	577.396992
									114.625024	114.625024
									1/2 = 57.312512 =	
6	⁻¹⁵² 606.5PP =	^{-152, 600} 6.499 = + 7.319		⁻³⁶ 406.522	^{-36, 400} 6.422 = - 19.480				47.734518	128.548420
7	609.310 =	9.310 = - 1.898		407.140 =	7.140 = + 20.718				13.551720	192.886480
45	604.701 =	4.701 = - 7.319 =		427.240 =	27.240 = + 19.480				199.369460	91.574480
44	601.991 =	1.991 = + 1.898		426.620 =	26.620 = - 20.718				50.524760	41.249438
									212.921280	98.259278
									169.798058	284.460060
									114.667002	114.667002
									1/2 = 57.331001 =	

計年月日

計算者



検査者



B.NO. 26

各筆面積計算書

地番	算式	隅切	地積	摘要
	福富 445 (四)		909.16 "	
	福富 418-3		165.12 "	
	保 2-26-1		57.31 "	
	保 2-26-2		57.33 "	
	福富 416-8		316.18 "	
	福富 416-5		886.43 "	
	豊成 399-7		556.91 "	
	福富 453-2 (四)		988.53 "	
	保 2-26-3		434.65 "	
	福富 417-1, 417-4 417-3 417-5		1,888.04 "	
	道路敷		25.15 "	
	公園 (3号)		3,420.04 "	
	福富 448-3		1,224.34 "	
	福富 449-1 (二)		387.08 "	
	福富 447-1 (一)		246.04 "	
	福富 444		411.07 "	
	水路 (A)		287.14 "	
	水路 (B)		209.64 "	
	管理道		106.17 "	
	計		12,576.33 "	
	全体		12,576.47 "	
		差	0.14 "	

