

BLOCK NO. 28

街 区 計 算

街区略図

工区

Z

ブロック

28

記入者



点検者



X = -152, 393. 533

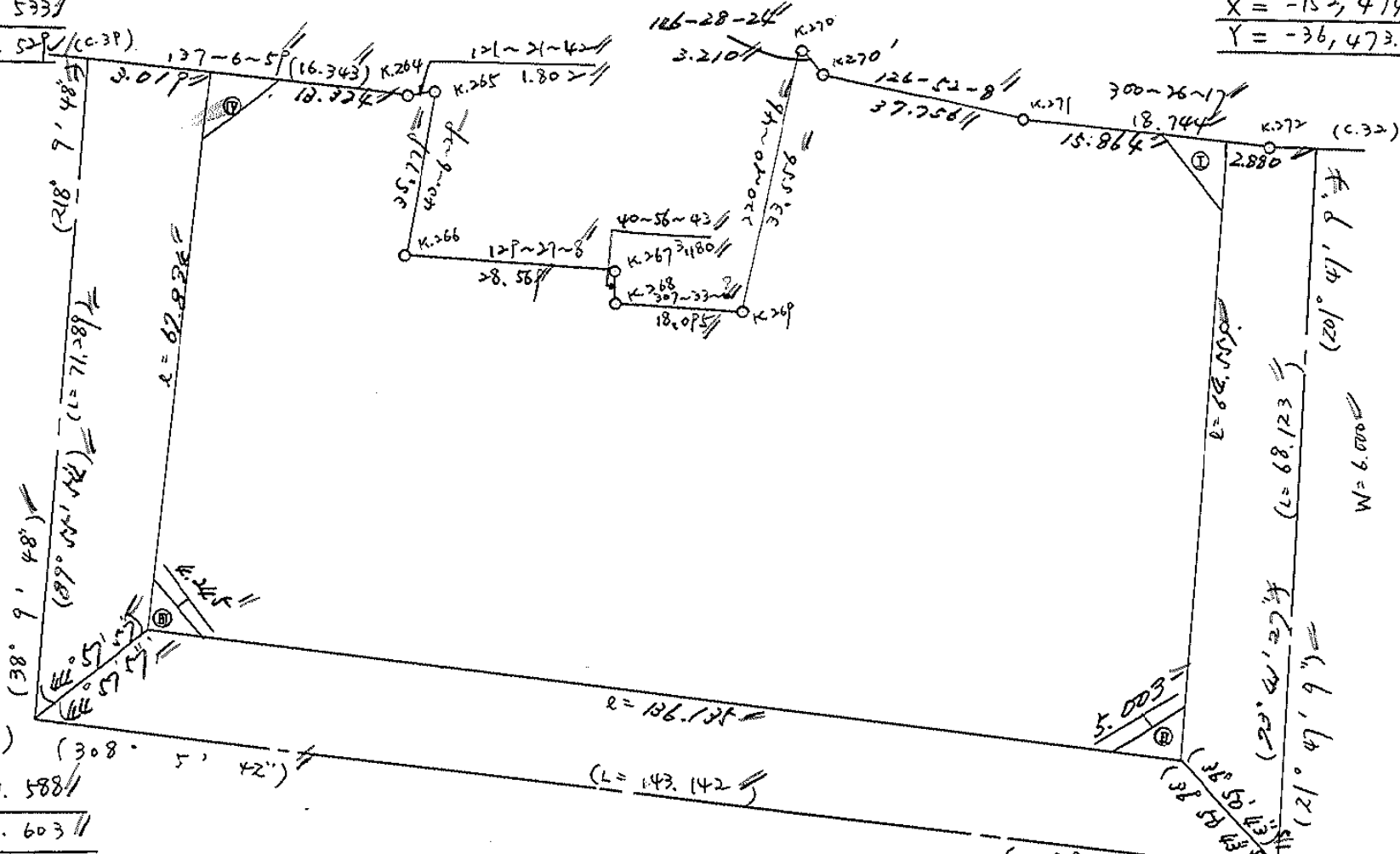
Y = -36, 587. 529 (C.39)

X = -152, 474. 638

Y = -36, 473. 669



W = 6.000



(C.40)

X = -152, 449. 588

Y = -36, 611. 603

W = 6.000

(128° 5' 42\"/>
 X = -152, 537. 902 (S.46)
 Y = -36. 498. 952

面積計算書

工区

2

ブロック

28

計算者

大塚

精算者

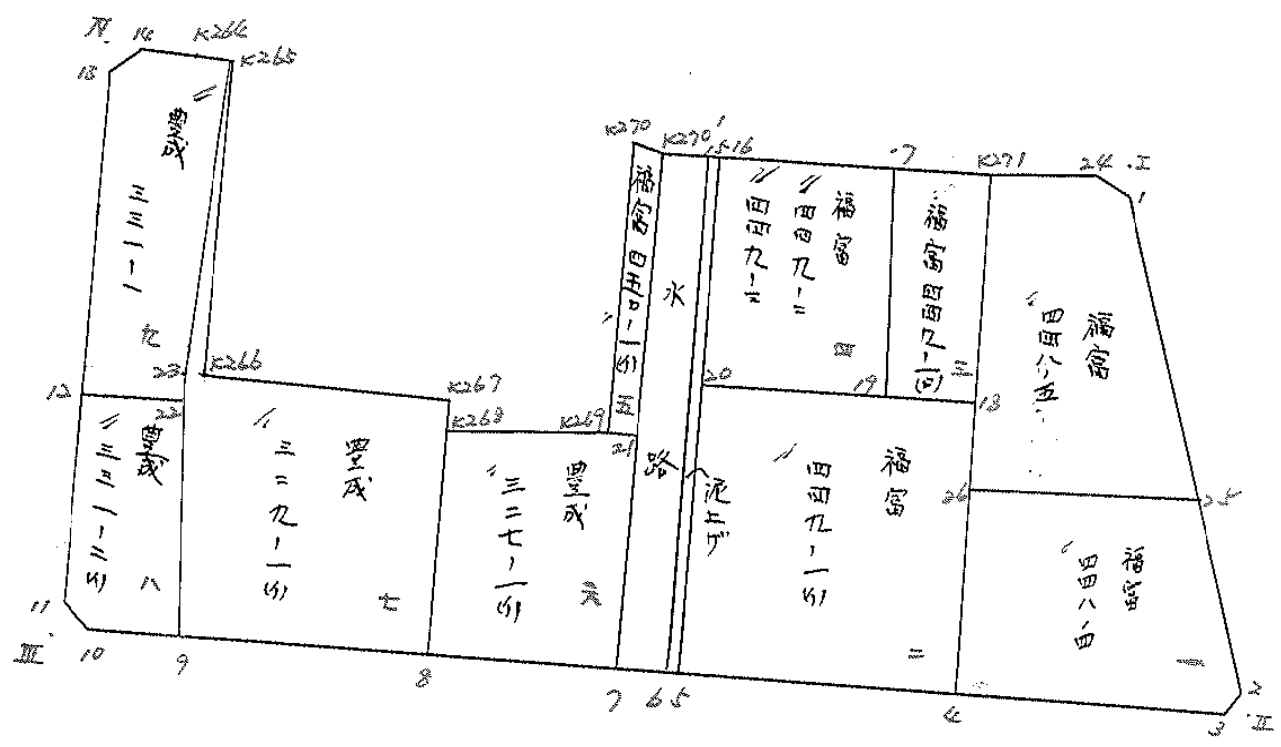
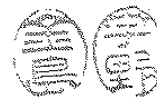
三浦

備考

全体

点	①	②	③	④	⑤	⑥	③ × ⑤		② × ⑥		
	X	X - (定数)	X _{n-1} - X _{n+1}	Y	Y - (定数)	Y _{n-1} - Y _{n+1}	+	-	+	-	
I	473.123 ⁺¹⁵²	173.123 ^{-152.300}	+ 67.985 ⁻³⁶	476.292 ⁻³⁶	76.292 ^{-36.400}	+ 10.283				1780.223809	
II	503.071	233.071	- 24.043	500.252	100.252	+ 131.097	2419.358836			30554.908887	
III	469.080	149.080	- 137.326	607.389	207.389	+ 65.222	28479.901814			9723.295764	
IV	295.745	95.745	- 43.872	565.474	165.474	- 50.982	7210.033128			4891.271590	
K264	405.508	105.508	+ 10.701	556.407	156.407	- 10.606	1673.711307		1119.017848		
K265	406.446	106.446	+ 28.303	554.868	154.868	+ 21.511	4383.229044			2289.759906	
K266	433.811	133.811	+ 45.519	577.918	177.918	+ 0.990	8098.649442			132.472890	
K267	451.965	151.965	+ 20.556	555.858	155.858	- 19.976	3203.817048		3035.652846		
K268	454.367	154.367	+ 13.430	557.942	157.942	- 12.261	2121.161060		1892.693787		
K269	465.295	165.295	- 14.610	543.597	143.597	- 35.995	2097.952170		5953.393025		
K270	439.757	139.757	- 22.962	521.947	121.947	- 23.423	2800.147014		3273.528217		
K270'	442.433	142.433	+ 25.329	520.174	120.174	- 31.978	3043.887246		4554.722474		
K271	465.086	165.086	+ 30.690	489.969	89.969	- 43.882	2761.148610		7244.303852		
			Σ ③ I	Σ ③ II	Σ ③ III	Σ ③ IV	42998.592962		30472.315337	31954.583627	44480.661252
							12526.07125			12526.077625	
			6263.03 - {4.45 + 4.32 + 4.50 + 4.44}						1/2 = 6263.03		

面地計算



面積計算書

工区

2

ブロック

20

計算者



精算者



備考

~~1-福富448-1(1)~~
2-福富449-1(1)

点	①	②	③	④	⑤	⑥	③ × ⑤		② × ⑥	
	X	X-(定数)	X _{n-1} -X _{n+1}	Y	Y-(定数)	Y _{n-1} -Y _{n+1}	+	-	+	-
1	⁻¹⁵² 476.909	^{-152.450} 25.909	⁻³⁶ + 58.682	477.605	^{-36.450} 27.405	+ 20.260				
2	530.285	80.785	+ 55.311	499.139	49.139	+ 25.208				
3	531.220	81.220	- 18.119	502.613	52.613	+ 27.779	953.294947			2256.210380
4	512.166	62.166	- 66.134	526.918	76.918	- 12.644	5086.895012			786.026904
K271	465.086	15.086	- 40.563	489.969	39.969	- 48.039	1621.262547			724.716354
24	471.603	21.603	+ 10.827	478.879	28.879	- 12.564		312.557417	271.420097	
							7661.452506	4638.664856	1782.163350	4804.951000
							3022.787650			3022.787650
								$\frac{1}{2} = 1511.39$		
18	⁻¹⁵² 485.421	^{-152.450} 35.421	⁻³⁶ + 46.571	505.928	^{-36.500} 5.928	- 4.303			276.072888	152.416563
4	512.166	62.166	+ 6.589	526.918	26.918	+ 46.700			177.362702	2903.152206
5	492.010	42.010	- 46.571	552.628	52.628	+ 4.303	2450.938388			180.769030
20	465.595	15.595	- 6.589	531.221	31.221	- 46.700	205.715169			728.286500
							2656.653757	453.435590	880.703063	3083.921230
							2203.218167			2203.218167
								$\frac{1}{2} = 1101.60$		

面積計算書

工区

2

ブロック

28

計算者



精算者



備考

1. 福富 448-4
1. 福富 448-5

点	①	②	③	④	⑤	⑥	③ × ⑤	② × ⑥
	X	X-(定数)	X _{n-1} -X _{n+1}	Y	Y-(定数)	Y _{n-1} -Y _{n+1}		
		-152, 490			-36, 490			
25	-152, 512.135	22.135	-35.147	-36, 491.884	1.884	+14.415	66.216948	319.076.025
26	-152, 495.138	5.138	+0.031	-36, 513.554	23.554	+35.034	0.730174	180.004.692
4	-152, 512.166	22.166	+36.082	-36, 526.918	36.918	-10.941	1322.075276	242.518206
3	-152, 531.220	41.220	+18.119	-36, 502.613	12.613	-27.779	228.534947	1145.050380
2	-152, 530.285	40.285	-19.085	-36, 499.139	9.139	-10.729	174.47815	432.217765
							240.634763	1561.340397
								1819.786351
								499.080717
								1320.705634
								1320.705634
								1/2 = 660.352817
		-152, 460			-36, 470			
1	-152, 475.909	15.909	+40.532	-36, 477.405	7.405	+13.005	300.139460	206.896565
25	-152, 512.135	52.135	+19.229	-36, 491.884	21.884	+36.149	420.807436	1884.628115
26	-152, 495.138	35.138	-47.049	-36, 513.554	43.554	-1.915	2049.172146	67.289270
K27	-152, 465.086	5.086	-23.535	-36, 489.969	19.969	-34.675	469.970415	176.357050
24	-152, 471.603	11.603	+10.823	-36, 478.879	8.879	-12.564	86.097417	145.780092
							2519.142461	817.044313
								389.426412
								2091.524660
							1702.098248	1702.098248
								1/2 = 851.049124

面積計算書

工
区

2

ブ
ロ
ック

28

計
算
者

大
本

精
算
者



備
考

3. 福富 449-1(10)
4. 福富 449-2
449-3

点	①	②	③	④	⑤	⑥	③ ×	⑤	② ×	⑥
	X	X-(定数)	X _{n-1} -X _{n+1}	Y	Y-(定数)	Y _{n-1} -Y _{n+1}	+	-	+	-
K271	⁻¹⁵² 465.086	^{-152.450} 15.086	+26.439	⁻³⁶ 489.969	^{-36.450} 39.969	+7.821				
18	485.421	35.421	+14.049	505.928	55.928	+23.978				
19	479.135	29.135	-26.439	513.947	63.947	-7.821	1690.674733		227.864835	
17	458.982	8.982	-14.049	498.107	48.107	-23.978	675.855243		215.370396	
							2366.549976	1842.472863	443.235231	967.312344
							524.077113			524.077113
									1/2 = 262.03	
17	⁻¹⁵² 458.982	^{-152.450} 58.982	+33.099	⁻³⁶ 498.107	^{-36.450} 48.107	-1.423				
19	479.135	79.135	+6.613	513.947	63.947	+33.114				
20	465.595	65.595	-33.099	501.221	81.221	+1.423	2688.333879			93.341685
16	446.036	46.036	-6.613	515.370	65.370	-33.114	432.291810		1524.436104	
							3120.625689	2015.175104	1608.367490	2713.818075
							1105.450585			1105.450585
									1/2 = 552.72	

面積計算書

工区

2

ブロック

28

計算者



精算者



備考

5. 福富 450-141
6. 豊成 327-1151

点	①	②	③	④	⑤	⑥	③	×	⑤	②	×	⑤
	X	X-(定数)	X _{n-1} -X _{n+1}	Y	Y-(定数)	Y _{n-1} -Y _{n+1}	+		-	+		-
K270	442.633 ⁻¹⁵²	42.433 ^{-152.600}	+ 27.973 ⁻³⁶	520.174 ⁻³⁶	20.174 ^{-36.500}	+ 18.727			564.377307			794.642799
21	467.730	67.730	+ 22.962	540.674	40.674	+ 23.423			733.956388			1526.439790
K269	465.395	65.395	- 27.973	543.597	43.597	- 18.727	1219.53888			1224.652165		
K270	439.757	39.757	- 22.962	521.947	21.947	- 23.423	503.947014			731.228011		
							1723.484895	1498.283690	2155.880376	2381.022581		
							225.202205			225.202205		
									1/2	112.601102		
21	467.730 ⁻¹⁵²	17.730 ^{-152.650}	+ 22.913 ⁻³⁶	540.674 ⁻³⁶	40.674 ^{-36.500}	+ 13.753			731.963362			243.840690
7	488.308	38.308	+ 7.358	557.350	57.350	+ 33.539			421.981300			1284.817012
8	475.088	25.088	- 33.941	574.213	74.213	+ 0.592	218.863433					14.852096
K268	454.367	4.367	- 9.693	557.962	57.962	- 30.616	561.631806			133.700075		
K269	465.395	15.395	+ 13.363	543.597	43.597	- 17.268			582.586711			265.840860
							3080.484239	1936.531375	399.540932	1543.504790		
							1143.963866			1143.963866		
									1/2	571.981933		

面積計算書

工区

2

ブロック

28

計算者

林

測量者



備考

7. 豊北 329-1 (b)

8 " " 331-2 (1)

点	①	②	③	④	⑤	⑥	③ × ⑤		② × ⑥		
	X	X-(定数)	X _{n-1} -X _{n+1}	Y	Y-(定数)	Y _{n-1} -Y _{n+1}	+	-	+	-	
		-152.400			-36.550						
K267	-152.451.965	51.965	+ 20.556	-36.555.858	5.858	- 19.976		120.417.048		1038.052.868	
K268	-152.454.367	54.367	+ 23.123	-36.557.942	7.942	+ 18.355		183.642.866		997.906.285	
8	-152.475.088	75.088	+ 2.771	-36.574.213	24.213	+ 39.168		67.094.223		2941.046.784	
9	-152.457.138	57.138	- 41.727	-36.597.110	47.110	+ 4.252	1965.758.970			242.950.776	
23	-152.433.361	33.361	- 50.692	-36.578.465	28.465	- 42.242	1442.947.780			1409.235.362	
K265	-152.406.446	6.446	+ 0.450	-36.554.868	4.868	- 0.547		2.190.600		3.525.962	
K266	-152.433.811	33.811	+ 15.519	-36.577.918	27.918	+ 0.990		1270.799.442		33.472.890	
								3408.706.750	1644.144.179	2450.814.164	4215.376.735
								1764.562.571			1764.562.571
								1/2 = 882.28			
27	-152.434.058	34.058	+ 31.122	-36.579.011	29.011	+ 7.847		902.880.342		267.253.126	
9	-152.457.138	57.138	+ 16.873	-36.597.110	47.110	+ 26.017		784.897.030		1486.559.346	
10	-152.450.931	50.931	- 10.413	-36.605.028	55.028	+ 8.425	573.226.676			429.093.675	
11	-152.446.721	46.721	- 24.915	-36.605.535	55.535	- 15.765	1383.654.525			736.556.565	
12	-152.426.016	26.016	- 12.663	-36.589.263	39.263	- 26.524	497.187.369			690.048.384	
								2454.068.570	1697.767.372	1426.604.949	2182.906.147
								756.301.198			756.301.198

面積計算書

工区

2

ブロック

28

計算者

大塚

測定者



備考

9. 豊成 331-1
泥上4"

点	①	②	③	④	⑤	⑥	③ × ⑤		② × ⑥	
	X	X-(定数)	X _{n-1} -X _{n+1}	Y	Y-(定数)	Y _{n-1} -Y _{n+1}	+	-	+	-
K215	-152.406.446	^{-152.350} 36.446	+ 27.853	-36.554.868	^{-36.550} 4.868	+ 22.058		135.588.404		1245.085.868
23	-152.433.361	83.361	+ 27.612	-36.578.465	28.465	+ 26.143		785.975.580		2012.584.623
22	-152.434.058	86.058	- 7.345	-36.579.019	29.011	+ 10.798	213.085.795			907.658.284
12	-152.426.016	76.016	- 35.954	-36.589.263	39.263	- 11.683	1411.641.902		888.074.928	
13	-152.398.104	48.104	- 28.075	-36.567.328	17.328	- 25.837	486.468.944		1242.574.424	
14	-152.397.943	47.943	+ 7.404	-36.563.432	13.432	- 10.921		99.450.528	523.585.503	
R264	-152.405.508	55.508	+ 8.503	-36.556.407	6.407	- 8.564		54.478.721	475.370.512	
							2111.196.641	1075.493.233	3129.625.367	4165.328.775
							1035.703.408			1035.703.408
								$\frac{1}{2} = 517.85$		
16	-152.446.036	^{-152.400} 46.036	+ 46.575	-36.515.370	^{-36.500} 15.370	+ 36.457		715.857.750		1678.334.452
5	-152.492.010	92.010	+ 45.357	-36.552.628	52.628	+ 38.045		2387.048.175		3500.520.450
6	-152.491.393	91.393	- 46.575	-36.553.415	53.415	- 36.457	2487.803.625		3331.914.601	
15	-152.445.435	45.435	- 45.357	-36.511.171	16.171	- 38.045	733.468.047		1728.574.575	
							3221.271.672	3102.905.946	5060.489.176	5178.854.902
							118.365.726			118.365.726
								$\frac{1}{2} = 59.18$		

面積計算書

工
区

区

ブ
ロ
ック

20

計
算
者



精
算
者



備
考

水路

点	①	②	③	④	⑤	⑥	③	×	⑤	②	×	⑥
	X	X-(定数)	X _{n-1} -X _{n+1}	Y	Y-(定数)	Y _{n-1} -Y _{n+1}	+		-	+		-
15	-152,444.434	-152,450 45.434	+ 48.960	-36,516.171	-36,500 16.171	+ 33.241			791.732160	1510.304835		
6	-152,491.393	91.393	+ 42.873	-36,543.415	43.415	+ 41.179			2290.06129	3763.472347		
7	-152,488.308	88.308	- 48.960	-36,547.340	47.340	- 33.241			2807.246000			2935.446228
K270	-152,442.433	42.433	- 42.873	-36,520.174	20.174	- 41.179			864.919902			1747.348407
									3672.774902	3081.793444		4682.794734
									590.982447	590.982447		
									1/2 = 295.4912235			

面積計算書

工区

2

ブロック

28

計算者



精算者



備考

隅切工, II

点	①	②	③	④	⑤	⑥	③ × ⑤	② × ⑥
	X	X-(定数)	X _{n-1} -X _{n+1}	Y	Y-(定数)	Y _{n-1} -Y _{n+1}	+	-
工	⁻¹⁵² 473.123	^{-152.470} 3.127	+ 4.306	⁻³⁶ 476.292	^{-36.470} 6.292	- 1.474	27.093352	14.603302
1	475.909	5.909	- 1.520	477.605	7.405	+ 2.587	11.255600	15.286583
24	471.603	1.603	- 2.786	478.879	8.879	- 1.113	24.736894	1.784139
							35.992494	27.093352
							8.899142	8.899142
							1/2=4.449571	
2	⁻¹⁵² 530.285	^{-152.530} 0.285	+ 1.851	⁻³⁶ 499.139	^{-36.490} 9.139	- 2.361	16.916289	0.672885
II	533.071	3.071	+ 0.935	500.252	10.252	+ 3.474	9.585620	10.668654
3	531.220	1.220	- 2.786	502.613	12.613	- 1.113	35.139818	1.357860
							35.139818	26.501909
							8.637909	8.637909
							1/2 4.3189545	

面積計算書

工区

2

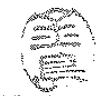
ブロック

28

計算者

林

計算者



備考

隅切Ⅲ,Ⅳ

点	①	②	③	④	⑤	⑥	③ × ⑤		② × ⑥	
	X	X-(定数)	X _{n-1} -X _{n+1}	Y	Y-(定数)	Y _{n-1} -Y _{n+1}	+	-	+	-
10	⁻¹⁵² 450.931	^{-152.440} 10.931	+ 2.359	⁻³⁶ 605.028	^{-36.600} 5.028	+ 1.854			11.861052	20.266076
Ⅲ	449.080	9.080	- 4.210	607.389	7.389	+ 0.507	31.107690			4.603560
11	446.721	6.721	+ 1.851	605.535	5.535	- 2.361			10.245285	15.868281
							31.107690		22.106337	15.868281
							9.001353			9.001353
									½ = 4.500	
13	⁻¹⁵² 398.104	^{-152.390} 8.104	- 2.198	⁻³⁶ 567.328	^{-36.560} 7.328	+ 2.042	16.106944			16.548368
Ⅳ	395.745	5.745	- 0.161	565.476	5.474	- 3.896	0.881314			22.382520
14	397.943	7.943	+ 2.359	563.432	3.432	+ 1.854			8.096088	14.726322
							16.988258		8.096088	22.382520
							8.892170			8.892170
									½ = 4.446	

計年
月
算日

計
算
者



檢
查
者



B. NO. 20

各筆面積計算書

地番	算式	隅切	地積	摘要
	福富 448-1 ^{福富 448-4} 福富 448-1 ^{福富 448-5}		7511 29	660.35 851.04
	福富 449-1(1)		1101 60	
	福富 449-1(1)		262 03	
	福富 449-2		552 72	
	福富 449-3			
	福富 450-1(1)		112 60	
	豊成 327-1(1)		571 98	
	豊成 329-1(1)		882 28	
	豊成 331-2(1)		378 15	
	豊成 331-1		517 85	
	管理道		59 18	
	水路		295 49	
	計		6245 27	
	全体		6245 32	
	差		0 05	
	換地面積		5890 60	
	水路		295 49	
	管理道		59 18	