

BLOCK NO. 30

街 区 計 算

街区略図

工区

ズ

ブロック

3D

記入者



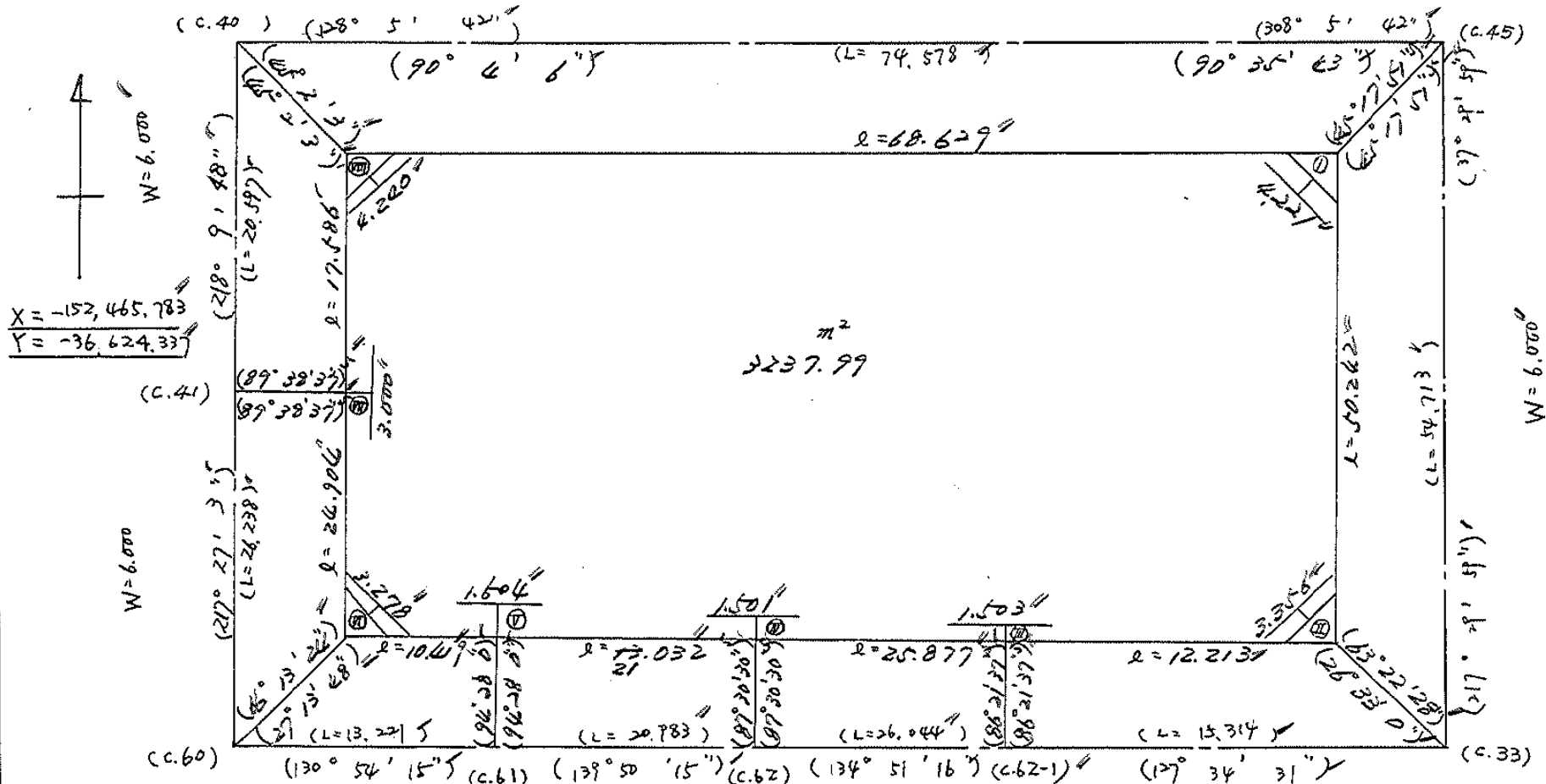
点検者



X = -152,449.588 ✓
Y = -36,611.603 ✓

X = -152,475.612 ✓
Y = -36,552.896 ✓

W = 6.000



X = -152,486.614 ✓
Y = -36,640.301 ✓

X = -152,495.272 ✓
Y = -36,630.315 ✓

X = -152,511.309 ✓
Y = -36,616.789 ✓

X = -152,529.680 ✓
Y = -36,598.335 ✓

X = -152,537.019 ✓
Y = -36,586.203 ✓

W = 3.000

面積計算書

工区

ノ

ブロック

ノ

計算者



精算者

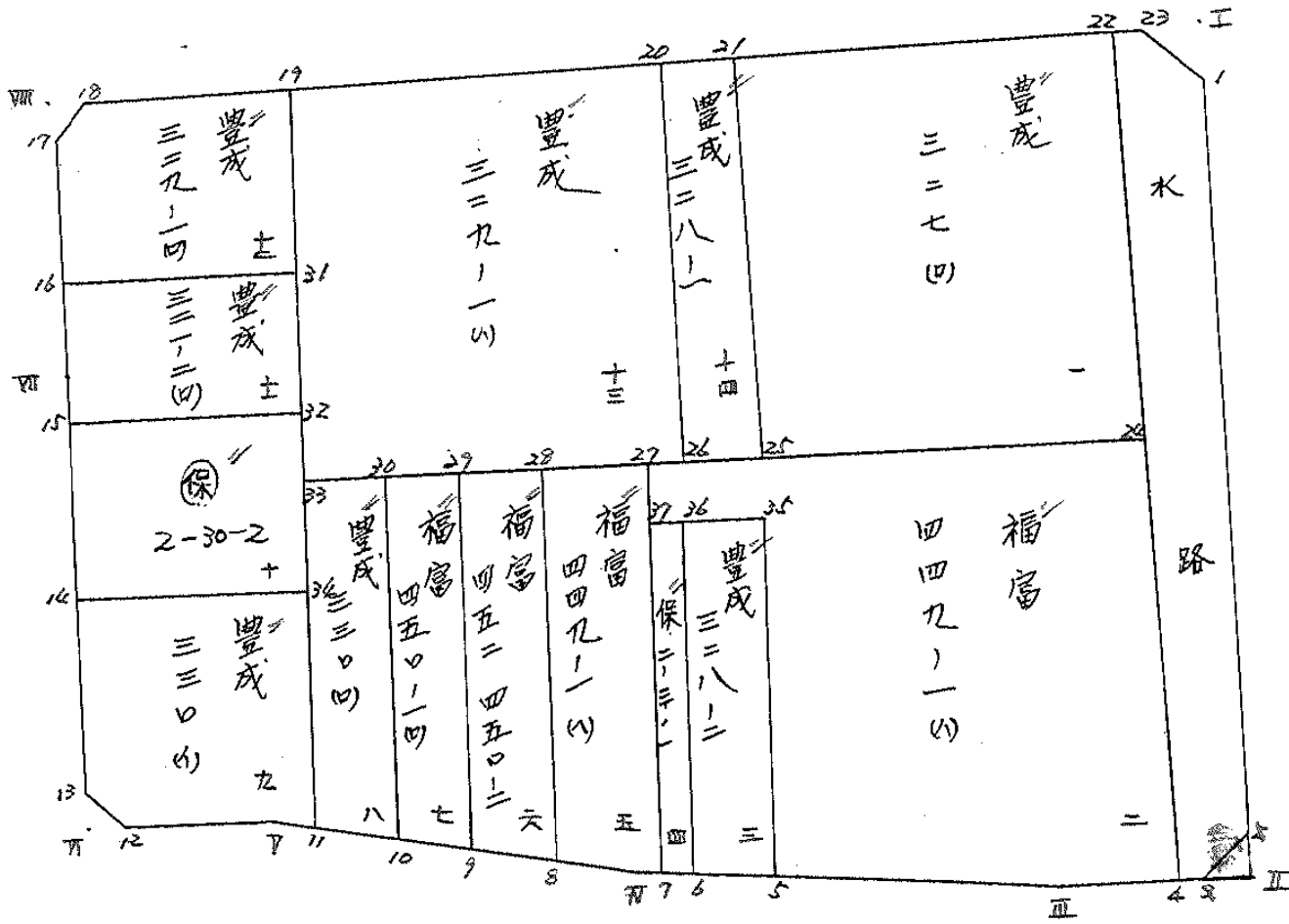


備考

全体

点	①	②	③	④	⑤	⑥	③ × ⑤	② × ⑥
	X	X-(定数)	X _{n-1} -X _{n+1}	Y	Y-(定数)	Y _{n-1} -Y _{n+1}	+ -	+ -
I	496.138	96.138	+82.201	557.084	57.084	-23.429	4697.361886	2252.417202
II	535.999	135.999	+32.411	587.667	87.667	+40.261	2841.375137	5425.457397
III	528.549	128.549	-25.707	597.345	97.345	+28.016	2502.447915	3601.428784
IV	510.292	110.292	-34.333	615.683	115.683	+31.900	3971.746639	3518.316800
V	494.216	94.216	-22.903	629.245	129.245	+21.433	12960.098235	2019.331528
VI	487.389	87.389	-26.594	637.116	137.116	-7.278	3666.662906	636.017142
VII	467.622	67.622	-33.591	621.967	121.967	-26.020	4096.993497	1759.524660
VIII	453.798	53.798	+28.516	611.096	111.096	-64.883	3168.013136	3490.575636
							17177.46990	10701.750557
							8138.536418	14616.532857
							6475.996433	6475.996433
							× 1/2 = 3237.9982165	
							3237.99 - (4.50 + 4.50 + 7.00 + 4.50) = 3222.69	
							3222.69	

圖地計算



9号-1

面積計算書		工区	Z	ブロック	JO	計算者	精算者	備考	1. 豊成 327(0)	2. 福富 449-1(1)
点	①	②	③	④	⑤	⑥	③ × ⑤	② × ⑥		
	X	X-(定数)	X _{n-1} -X _{n+1}	Y	Y-(定数)	Y _{n-1} -Y _{n+1}	+	-	+	-
22	⁻¹⁵² 493.053	^{-152.400} 93.053	+36.252	⁻³⁶ 561.019	^{-36.500} 61.019	-3.139			2090.02788	292.093367
24	512.905	112.905	+5.282	676.250	76.250	+23.808			602.752500	3817.092240
25	498.335	98.335	-34.252	694.827	94.827	+3.139	2248.014604			308.673565
21	478.653	78.653	-5.282	579.389	79.389	-23.808	419.332698			2159.100244
							2667.347102		2492.776288	2751.193991
							1176.571816			425.765005
							x 1/2 = 587.285907			1176.571816
24	⁻¹⁵² 512.902	^{-152.490} 22.902	+39.101	⁻³⁶ 576.250	^{-36.570} 6.250	-9.918			204.381250	206.260036
4	532.949	42.949	+15.647	591.629	21.629	+21.095			228.428963	706.009155
10	528.549	38.549	-16.727	597.365	27.365	+19.097	457.299815			697.621253
5	516.222	26.222	-28.976	609.726	39.726	-1.373	151.100676			26.002806
25	499.573	9.573	-21.480	595.972	25.972	-8.408	557.878680			80.489786
37	494.762	4.762	-5.725	601.318	31.318	+4.575	179.295650			21.696650
27	493.848	3.848	+18.160	600.547	30.547	-25.068			556.733520	96.461664
							2345.676501		1137.563733	417.194290
							1208.130768			1625.225058
							x 1/2 = 604.065384			1208.130768

面積計算書		工区	ブロック	計算者	精算者	備考	豊成 28-2 保伊地 2-30-1			
点	①	②	③	④	⑤	⑥	③ × ⑤	② × ⑥		
	X	X-(定数)	X _{n-1} -X _{n+1}	Y	Y-(定数)	Y _{n-1} -Y _{n+1}	+	-	+	-
25	499.573	9.673	+20.538	595.972	5.972	+9.450	172.657936		90.666850	
5	516.222	26.222	+17.224	609.726	19.726	+18.200	241.130624		177.240600	
6	511.797	21.797	-20.538	614.172	26.172	-9.450	496.464536		205.981650	
26	495.684	5.684	-12.224	600.276	10.276	-18.200	125.613824		103.668800	
							622.058360	243.783560	309.430650	557.706250
							258.274800			258.274800
							× 1/2 = 129.137400		合筆あり	
26	495.684	5.684	+17.055	600.276	0.276	+12.854		4.707180	73.02126	
6	511.797	21.797	+15.118	614.172	14.172	+14.894		214.25228	224.644518	
7	510.802	20.802	-17.055	615.170	15.170	-12.854	268.724350		267.388908	
27	494.742	4.742	-15.118	601.318	1.318	-14.894	19.925524		70.627368	
							278.649876	218.959676	228.016256	397.706654
							59.490398			59.690398
							1/2 = 29.845199		合筆あり	

面積計算書										工区	2	ブロック	30	計算者	精算者	備考	5. 福富 449-100	6. 福富 450-2
点	①	②	③	④	⑤	⑥	③	⑤	②	⑥								
	X	X-(定数)	X _{n-1} -X _{n+1}	Y	Y-(定数)	Y _{n-1} -Y _{n+1}	+	-	+	-								
27	⁻¹⁵² 493.851	^{-152.400} 93.851	+19.564	⁻³⁶ 600.546	^{-36.600} 0.544	+11.294												
7	510.802	110.802	+16.441	615.170	15.170	+15.139												
π	510.292	110.292	-2.442	615.683	15.683	+2.143	38.297886			236.355756								
8	508.360	108.360	-19.054	617.313	17.313	-11.807	329.881902		1279.406520									
28	491.238	91.238	-14.509	603.876	3.876	-16.769	56.236884		1529.970022									
							424.416672	260.052786	2809.376542	22973.740428								
							164.363886			164.363886								
							1/2 82.181943											
28	⁻¹⁵² 491.238	^{-152.400} 91.238	+20.084	⁻³⁶ 603.876	^{-36.600} 3.876	+9.661												
8	508.360	108.360	+13.378	617.313	17.313	+16.595												
9	504.616	104.616	-20.084	620.471	20.471	-9.661	411.139564		1010.695176									
29	488.276	88.276	-13.378	607.652	7.652	-16.595	102.368456		1464.940220									
							513.508020	309.458898	2475.635396	2679.684518								
							204.049122			204.049122								
							1/2 102.024561											

面積計算書										工区	2	ブロック	30	計算者	精算者	備考	7. 福富 450-110		8. 豊成 220(4)	
点	①	②	③	④	⑤	⑥	③ × ⑤		② × ⑥											
	X	X-(定数)	X _{n-1} -X _{n+1}	Y	Y-(定数)	Y _{n-1} -Y _{n+1}	+	-	+	-										
29	⁻¹⁵² 488.276	^{-152,400} 88.276	+ 20.289	⁻³⁶ 607.652	^{-36,600} 7.652	+ 7.784				687.160384										
9	504.616	104.616	+ 11.343	620.471	20.471	+ 17.034				1782.028966										
10	499.619	99.619	- 20.289	624.686	24.686	- 7.784	500.854254			775.434276										
30	484.327	84.327	- 11.363	612.687	12.687	- 17.034	163.908641			1436.426118										
							644.762895	1387.453981		2211.860416										
							257.308914			2573.08914										
								1/2 128.654457												
30	⁻¹⁵² 484.327	^{-152,400} 84.327	+ 18.747	⁻³⁶ 612.687	^{-36,600} 12.687	+ 7.596				660.379238										
10	499.619	99.619	+ 10.921	624.686	24.686	+ 15.687				1562.723253										
11	495.248	95.248	- 18.747	628.374	28.374	- 7.596	531.927378			723.313312										
33	480.872	80.872	- 10.921	617.092	17.092	- 15.687	186.661732			1268.639064										
							718.589110	507.438995		1991.952376										
							211.150115			2203.102491										
								1/2 105.575057		211.150115										

面積計算書

工区

2

ブロック

3D

計算者



精算者



備考

9. 豊成 330 ㌔

10 ~~未指定地~~ (併) 2-30-2

点	①	②	③	④	⑤	⑥	③ × ⑤		② × ⑥	
	X	X-(定数)	X _{n-1} -X _{n+1}	Y	Y-(定数)	Y _{n-1} -Y _{n+1}	+	-	+	-
34	⁻¹⁵² 485.121	^{-152.400} 85.121	+ 17.456	⁻³⁶ 420.426	^{-36.600} 20.426	- 1.387			356.556256	118.062827
11	495.248	95.248	+ 9.095	428.374	28.374	+ 8.819			258.061530	839.992112
11	494.216	94.216	- 6.548	429.245	29.245	+ 7.231			191.496260	681.275896
12	488.700	88.700	- 8.414	435.605	35.605	+ 6.654			299.580470	590.209800
13	485.802	85.802	- 10.908	435.899	35.899	- 5.844			391.586292	501.426888
14	477.792	77.792	- 0.681	429.761	29.761	- 15.473			20.267241	1203.675616
									902.930263	614.617786
									1823.165331	2111.477808
									288.312477	288.312477
									1/2 144.1562385	
32	⁻¹⁵² 477.803	^{-152.400} 77.803	+ 14.718	⁻³⁶ 614.683	^{-36.600} 14.683	- 3.672			216.104394	285.692616
34	485.121	85.121	- 0.011	420.426	20.426	+ 13.078			0.224686	1283.454438
14	477.792	77.792	- 14.718	429.761	29.761	+ 3.672			438.022398	285.652224
15	470.403	70.403	+ 0.011	424.098	24.098	- 13.078			0.265078	1061.536434
									438.247084	216.369472
									1347.229050	1569.106662
									221.877612	221.877612
									1/2 110.938806	

面積計算書										工区	2	ブロック	3D	計算者	精算者	備考	11. 豊成 221-2 (12)	12. 豊成 229-1 (12)
点	①	②	③	④	⑤	⑥	③ × ⑤	② × ⑥										
	X	X-(定数)	X _{n-1} -X _{n+1}	Y	Y-(定数)	Y _{n-1} -Y _{n+1}	+	-	+	-								
31	⁻¹⁵² 468.376	^{-152.400} 68.376	+16.842	⁻³⁶ 607.285	^{-36.600} 7.285	-2.046	122.693970	139.897296										
32	477.803	77.803	+2.027	614.683	14.683	+16.813	29.762441		1308.101839									
15	470.403	70.403	-10.181	624.098	24.098	+7.284	245.341738		512.815452									
VI	467.622	67.622	-9.442	621.967	21.967	-7.369	207.412414		498.306518									
16	460.961	60.961	+0.754	616.729	16.729	-14.682	12.613666	895.029405										
							452.754152	165.070077	1533.233216	1820.917291								
							287.684075		287.684075									
							1/2 = 143.8420375											
19	⁻¹⁵² 461.200	^{-152.400} 61.200	+12.727	⁻³⁶ 601.653	^{-36.600} 1.653	-1.450	21.037731	88.740000										
31	468.376	68.376	-0.239	607.285	7.285	+15.076	1.741115		1030.836576									
16	460.961	60.961	-12.220	616.729	16.729	+5.666	204.428380		345.405026									
17	456.156	56.156	-5.312	612.951	12.951	-7.994	68.795712		448.911064									
18	455.649	55.649	+5.044	608.735	8.735	-11.298	44.059340	628.722402										
							274.965207	65.097071	1166.373466	1376.241602								
							209.868136		209.868136									
							1/2 = 104.934068											

面積計算書										工区	2	ブロック	20	計算者	大塚	精算者	備考	13. 豊成'229-100	14. 豊成'228-1
点	①	②	③	④	⑤	⑥	③ × ⑤	② × ⑥											
	X	X-(定数)	X _{n-1} -X _{n+1}	Y	Y-(定数)	Y _{n-1} -Y _{n+1}	+	-	+	-									
20	⁻¹⁵² 475.631	^{-152.450} 25.631	+34.112	⁻³⁶ 583.244	^{-36.550} 33.244	-2.971			1134.019328	76.149701									
26	495.312	45.312	+5.241	598.682	48.682	+33.848			255.142362	1533.720576									
33	480.872	30.872	-34.112	617.092	67.092	+2.971	2288.642304			91.720712									
19	461.200	11.200	-5.241	601.653	51.653	-33.848	270.713373		379.097600										
							2559.355677	1389.161690	455.247301	1626.441280									
							1170.193987			1170.193987									
									1/2 = 585.0969935										
21	⁻¹⁵² 478.653	^{-152.450} 28.653	+22.704	⁻³⁶ 579.389	^{-36.550} 29.389	+11.583			667.247856	331.887699									
25	498.335	48.335	+16.659	596.827	44.827	+19.293			746.772993	932.527155									
26	495.312	45.312	-22.704	598.682	48.682	-11.583	1105.276128		524.848896										
20	475.631	25.631	-16.659	583.244	33.244	-19.293	553.811796		494.498883										
							1659.087924	1414.020849	1019.347779	1264.416054									
							245.067075			245.067075									
									1/2 = 122.5335375										

面積計算書		工区	2	ブロック	30	計算者	精算者	備考	水路	
点	①	②	③	④	⑤	⑥	⑦ × ⑧	⑨ × ⑩		
	X	X-(定数)	X _{n-1} -X _{n+1}	Y	Y-(定数)	Y _{n-1} -Y _{n+1}	+	-	+	-
I	-152 498.518	-152.690 8.518	+61.712	-36 558.910	-36.550 8.910	+28.222			371.653926	260.394996
II	535.999	65.999	+36.631	587.667	37.667	+32.719			1296.912477	1505.061281
II	537.969	62.969	-62.966	591.629	61.629	-26.648	1787.799034		1146.566952	
22	493.053	3.053	-38.662	561.019	11.019	-32.184	626.016578		98.257752	
23	494.287	4.287	+5.665	559.465	9.465	-2.109			51.616925	9.04283
							2213.815412	1720.183322	1251.803987	1765.636277
							493.632296			493.632296
							x/2 = 246.816145			

面積計算書											工区	2	ブロック	30	計算者	精算者	備考	隅切 I, II		
点	①	②	③	④	⑤	⑥	③	×	⑤	②	×	⑥								
	X	X-(定数)	X _{n-1} -X _{n+1}	Y	Y-(定数)	Y _{n-1} -Y _{n+1}	+		-	+		-								
I	⁻¹⁵² 496.138	^{-152.490} 6.138	+ 4.231	⁻³⁶ 557.086	^{-36.550} 7.084	- 0.535			2.9972404			3.283.830								
1	498.518	8.518	- 1.851	558.910	8.910	+ 2.361	16.492410					20.110.998								
23	496.287	6.287	- 2.380	559.445	9.445	- 1.826	22.479100					7.828.062								
							38.971510	29.972404		11.111.892		20.110.998								
							8.999106					8.999106								
									1/2 = 4.499											
Z	⁻¹⁵² 533.619	^{-152.530} 3.619	+ 1.830	⁻³⁶ 585.841	^{-36.580} 5.841	- 2.377			10.689030			8.602.363								
II	535.999	5.999	+ 0.550	587.667	7.667	+ 4.203			4.216850			25.213.797								
3	536.169	4.169	- 2.380	590.066	10.066	- 1.826	23.904720					7.612.594								
							23.904720	14.905880		16.214.957		25.213.797								
							8.998840					8.998.840								
									1/2 = 4.499											

面積計算書

工区

Z

ブロック

3D

計算者



測量者



備考

陽切Ⅶ.Ⅷ

12

17

点	①	②	③	④	⑤	⑥	③ × ⑤		② × ⑥	
	X	X-(定数)	X _{n-1} -X _{n+1}	Y	Y-(定数)	Y _{n-1} -Y _{n+1}	+	-	+	-
12	⁻¹⁵² 488.700	^{-152.600} 488.700	+1.587	⁻³⁶ 635.605	^{-36.600} 35.605	+1.217		56.505135		107.947900
Ⅶ	487.389	487.389	-2.898	637.116	37.116	+0.294	107.562168			25.692366
13	485.802	485.802	+1.311	635.899	35.899	-1.511		47.063589	129.646822	
							107.562168	103.508724	129.646822	133640266
							3.993444			3.993444
								1/2 = 1.996722		
17	⁻¹⁵² 456.156	^{-152.400} 456.156	-1.851	⁻³⁶ 612.951	^{-36.600} 12.951	+2.361	23.972301			132.584316
Ⅷ	453.798	453.798	-0.507	611.096	11.096	-4.216	5.625672		226.812368	
18	455.649	455.649	+2.358	608.725	8.725	+1.855		20.597130		103.228895
							29597973	20.597130	226.812368	235813211
							9.000843			9.000843
								1/2 = 4.5004215		

計年月
算日

計算者



検査者



B. NO. 30

各筆面積計算書

地番	算式	隅切地積	摘要
1	豊成 227 (B)	587.28	
2	福富 449-1 (A)	604.06	
3	豊成 228-2	129.13	
4	保留地 2-30-1	29.84	
5	福富 449-1 (A)	82.18	
6	福富 452 450-2	102.02	
7	福富 450-1 (B)	128.65	
8	豊成 220 (B)	105.57	
9	豊成 220 (A)	166.15	
10	未指定地 保 2-30-2	110.93	
11	豊成 221-2 (B)	143.84	
12	豊成 229-1 (B)	106.93	
13	豊成 229-1 (A)	585.09	
14	豊成 228-1	122.53	
	水路	246.81	
計		3227.01	
金		3227.01	
休		3226.99	
差		3227.01	
		0.02	
	換地	2829.43	
	保留地	29.84	
	(未指定地) 保留地	110.93	
	水路	246.81	
		246.81	