

**BLOCK NO. 1**

**街区計算**

街区略図

工区

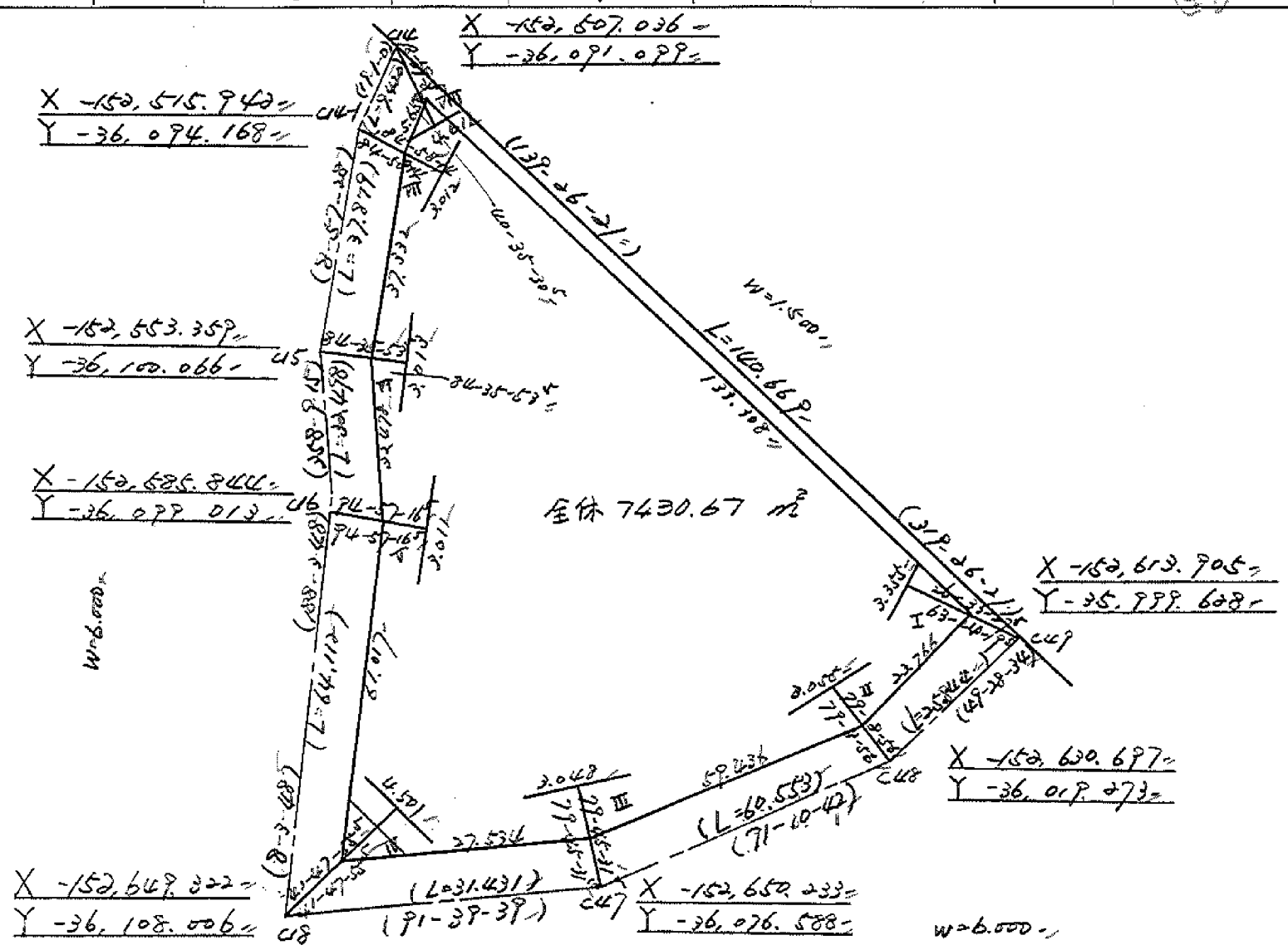
2

ブロック

1

記入者

点検者



# 面積計算書

工区

2

ブロック

1

計測者



精算者



備考

合算

点	①	②	③	④	⑤	⑥	③ × ⑤		② × ⑥	
	X	X-(定数)	X <sub>n-1</sub> -X <sub>n+1</sub>	Y	Y-(定数)	Y <sub>n-1</sub> -Y <sub>n+1</sub>	+	-	+	-
I	-152,612.601-	-152,500-	+ 116.719-	-36,022.719-	-36,000-	- 2.719-				
II	-152,628.043-	128.043-	+ 34.618-	-36,020.785-	20.785-	+ 74.324-		217.358961-	7726.455418-	
III	-152,647.219-	147.219-	+ 18.378-	-36,077.043-	77.043-	+ 83.780-		719.535130-		9546.667930-
IV	-152,646.421-	146.421-	- 61.212-	-36,104.565-	104.565-	+ 18.964-	6400.632780-			2776.727844-
V	-152,586.007-	86.007-	- 92.875-	-36,096.007-	96.007-	- 7.506-	8916.650125-			6465.568542-
VI	-152,553.546-	53.546-	- 69.337-	-36,097.059-	97.059-	- 4.762-	6729.779883-			254.981052-
VII	-152,516.670-	16.670-	- 42.222-	-36,091.245-	91.245-	- 7.656-	3852.546390-			127.625520-
VIII	-152,511.324-	11.324-	+ 95.931-	-36,089.403-	89.403-	- 28.526-		8576.519193-	1002.468424-	
							25299.609178-	11029.309538-	9757.103956-	24627.403596-
							14870.299640-			14870.299640-
										$\frac{1}{2} = 7435.149820-$
										$7435.14 - 4.47 = 7,430.67-$

# 圖地計算

画地略図

工区

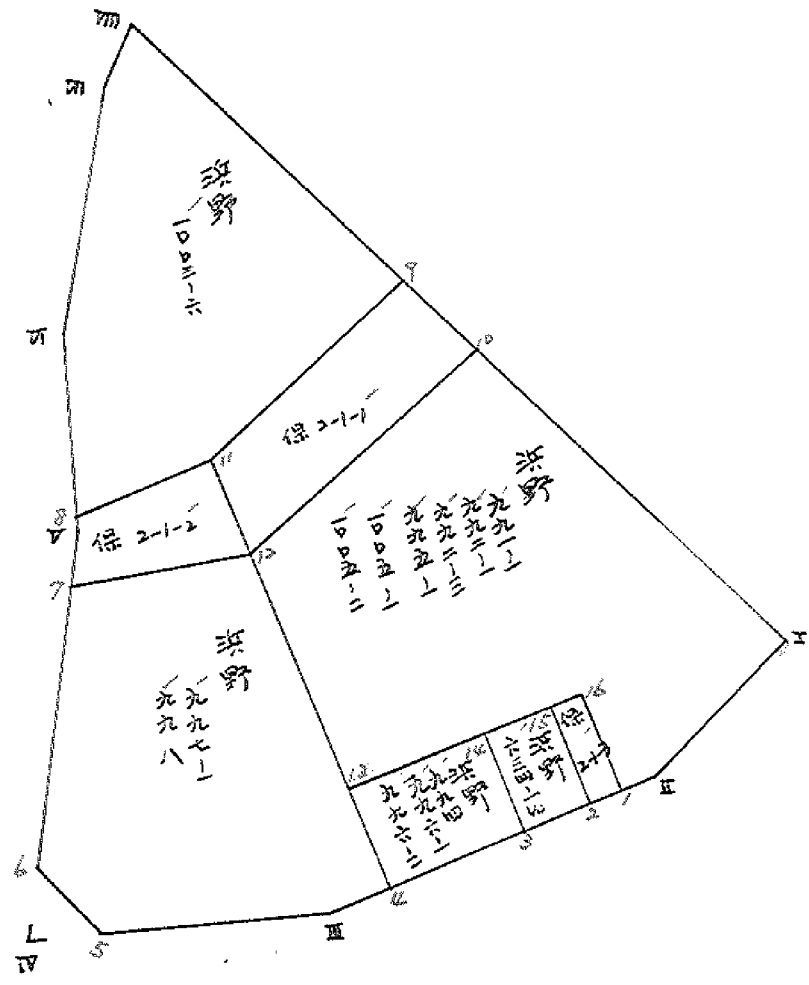
2

ブロック

記入者



点検者



# 面積計算書

工区

2

ブロック

1

計算者



精算者



備考

浅野 997-1, 998

(併) 2-1-2

点	①	②	③	④	⑤	⑥	×	⑤	×	⑥	
	X	X-(定数)	X <sub>n-1</sub> -X <sub>n+1</sub>	Y	Y-(定数)	Y <sub>n-1</sub> -Y <sub>n+1</sub>		+		-	+
4	-152, 643.219	-152.500 / 143.219+	59.753	-36, 065.308	-36.000 / 65.308+	2.163		396.2342924		309.792497	
Ⅲ	647.219	147.219+	3.289	077.043	77.043+	36.258		253.394427		5337.866502	
5	646.508	146.508+	3.768	101.566	101.566+	27.101	382.700688			3970.513309	
6	643.451	143.451+	53.581	104.144	104.144+	4.579	5580.139664		156.362129		
7	592.927	92.927+	55.985	096.987	96.987+	29.264	5429.817195		2719.415729		
12	587.466	87.466+	50.292	074.880	74.880+	31.679		3765.864960	2770.935414		
								11392.457547	7921.468311	6147.113271	9619.162607
								3471.049236			3471.049236
									1/2 = 1735.524618		
							分筆後の座標なし				
7	-152, 592.927	-152.570 / 22.927+	1.459	-36, 096.987	-36.070 / 26.987+	2.1127	39.374033			484.379729	
Ⅳ	586.007	16.007+	11.799	096.007	26.007+	0.922	306.856593		13.157754		
8	581.128	11.128+	12.703	096.165	26.165+	18.696	332.373995		208.049088		
11	573.304	3.304+	6.338	077.311	7.311+	21.285		46.337118	70.325440		
12	587.466	17.466+	19.623	074.880	4.880+	19.676		95.760240		303.661016	
								672.644621	142.097358	291.532492	872.039745
								1/2 = 268.2536315			536.507263

# 面積計算書

工区 Z

ブロック /

計算者



経理者



備考

浜野 1003-6  
(保) 2-1-1

点	① X	② X-(定数)	③ X <sub>n-1</sub> -X <sub>n+1</sub>	④ Y	⑤ Y-(定数)	⑥ Y <sub>n-1</sub> -Y <sub>n+1</sub>	③ +	⑤ -	② +	⑥ -
Ⅲ	-52 511.324	-152500 11.324	+36.400	-36 289.403	-36.050 29.403	-37.573		1434.269200	425.476652	
9	553.070	53.070	+61.980	053.672	3.672	+2.092		227.590560	641.722440	
11	573.304	73.304	+28.058	077.311	27.311	+42.493		766.292038		3114.906872
8	581.128	81.128	-19.758	096.165	46.165	-19.748	912.528070			1602.115744
Ⅱ	553.546	53.546	-64.458	097.059	47.059	-4.920	3033.329022		263.446320	
Ⅲ	516.670	16.670	-42.222	091.245	41.245	-7.656	1741.446390		127.625520	
							5686.903482	2428.151798	1458.279932	4717.022616
							3258.751674			3258.751684
								$\frac{1}{2} = 1629.375842$		
9	-52 553.070	-152500 53.070	-10.859	-36 053.672	-36.040 13.672	-31.663	148.464248		1680.355410	
10	562.445	62.445	+34.396	045.648	5.648	+21.208		194.268608		1324.333560
12	587.466	87.466	+10.859	074.880	24.880	+31.663		378.761920		2769.435958
11	573.304	73.304	-34.396	077.311	37.311	-21.208	1283.349156		1554.631232	
							1431.813404	573.030528	3234.986642	4013.769518
							858.782876			258.782876
								$\frac{1}{2} = 429.391438$		

# 面積計算書

工区 2

ブロック 1

計算者



算定者



備考

波野 971-1, 972-1, 972-3  
975-1, 1005-1, 1005-2  
(停) 2-1-3

点	①	②	③	④	⑤	⑥	③	⑤	②	⑥
	X	X-(定数)	X <sub>n-1</sub> -X <sub>n+1</sub>	Y	Y-(定数)	Y <sub>n-1</sub> -Y <sub>n+1</sub>	+	-	+	-
10	-152, 562.445	-152,500 / 62.445	+ 25.135	-36, 045.648	-36,000 / 45.648	- 72.161		1147.262480	45.06.073645	
I	612.601	112.601	+ 65.598	002.719	2.719	- 24.863		178.360962	2799.598663	
II	628.043	128.043	+ 19.216	020.785	20.785	+ 29.137		399.404560		3730.788891
1	631.817	131.817	- 8.610	031.856	31.856	+ 15.292	274.280160			2015.745564
16	619.433	119.433	- 1.657	036.077	36.077	+ 25.694	59.779589			4263.041502
13	630.160	130.160	- 31.967	067.550	67.550	+ 38.803	2159.370050			5050.598480
12	537.466	87.466	- 67.715	074.880	74.880	- 21.902	5070.499200		1915.680332	
							7563.929799	725.128002	9221.372649	15060.174407
							5838.801797			5838.801797
							Σ = 2919.4008985			
1	-152, 631.817	-152,600 / 31.817	+ 13.814	-36, 031.856	-36,000 / 1.856	- 0.024		25.638784	0.762608	
2	633.247	33.247	- 10.954	036.053	6.053	+ 8.416	66.204562			279.806752
15	620.863	20.863	- 13.814	040.272	10.272	+ 0.024	141.899408			0.500712
16	619.433	19.433	+ 10.954	036.077	6.077	- 8.416		66.567458	163.548128	
							208.201970	92.206242	164.311736	220.307464
							115.995728		Σ = 57.997864	115.995728





新野  
945-1  
1045-1  
1045-2

# 座標法面積計算 ( )

測点	X	△x	Y	
	(-15)		(-36)	
13	- 630.160		- 67.550	
14				
-1	- 620.891		40.354	
10				
-2	- 607.298		81.688	
10				
-1	- 589.295		22.239	
10				
	- 562.465		- 45.648	
12				
	- 587.466		74.850	
13				
	- 630.160		67.550	
			$\bar{z} =$	
			$F = (E_1) - (E_2) =$	
計算者			$F / 2 =$	93425 1987.27 m <sup>2</sup>
点検者			$\times 0.3025 =$	1987.27

# 面積計算書

工区

2

ブロック

1

計算者



精算者



備考

波野  
波野

634-1 (1)

994, 996-1, 996-2

点	①	②	③	④	⑤	⑥	③ × ⑤	② × ⑥		
	X	X-(定数)	X <sub>n-1</sub> -X <sub>n+1</sub>	Y	Y-(定数)	Y <sub>n-1</sub> -Y <sub>n+1</sub>	+	-		
2	-152, 633.247	-152,600 33.247	+15.517	-36, 036.053	-36,030 6.053	+4.970		93.924401	165.237590	
3	636.380	36.380	-9.254	045.242	15.242	+13.404	141.029468		487.637520	
14	623.993	23.993	-15.517	049.457	19.457	-4.970	201.914269	119.245210		
15	620.863	20.863	+9.254	040.272	10.272	-13.404		95.057088	279.647652	
							442.963737	188.981489	398.892862	652.875110
							213.982248			253.982248
								$\frac{1}{2} = 126.991124$		
3	-152, 636.380	-152,600 36.380	+19.226	-36, 045.242	-36,040 5.242	+15.851		100.782692	576.659280	
4	643.219	43.219	-6.220	065.308	25.308	+22.308	157.415760		964.129452	
13	630.160	30.160	-19.226	067.550	27.550	-15.851	529.676300		478.066160	
14	623.993	23.993	+6.220	049.457	9.457	-22.308		58.822540	525.228844	
							687.092060	159.655232	1013.322024	1540.788832
							527.486828			527.486828
								$\frac{1}{2} = 263.743414$		

# 面積計算書

工区

子

ブロック

/

計算者



精算者



備考

陽功

四

点	①	②	③	④	⑤	⑥	③	×	⑤	②	×	⑥
	X	X-(定数)	X <sub>n-1</sub> -X <sub>n+1</sub>	Y	Y-(定数)	Y <sub>n-1</sub> -Y <sub>n+1</sub>	+	-	+	-		
5	-152,646.508-	-152,640.1 6.528-	-2.970-	-36,101.566-	-36,100.1 1.566-	-0.421-	4.651020-			2.739868-		
6	-152,643.451-	2.451-	-0.027-	-36,104.144-	4.144-	+2.999-	0.260528-					10.349549-
四	-152,646.421-	6.421-	+2.057-	-36,104.565-	4.565-	-2.578-		13.955205-	16.553238-			
							5.011548-	13.955205-	19.293226-			10.349549-
							8.943657-					8.943657-
								1/2 = 4.4718285-				

計年月日

計算者



検査者



B.NO. /

各筆面積計算書

地番	算式	隅切	地積	摘要
1	茨野 1003-6		1629.37	
2	" 991-1 995-1 992-1 1005-1 992-3 1005-2		2919.40	
3	" 634-1(1)		126.99	
4	" 994- 996-1 996-2		263.74	
5	" 997-1 998		1735.52	6675.02
	保 2-1-1		429.39	
	" 2-1-2		268.25	
	" 2-1-3		57.99	755.63
				7430.65 小計
	隅切 Ⅳ	0.47		
	合計		7435.12	
	全体		7435.14	
	差		-0.02	