

BLOCK NO. 16

街区計算

街区略図

工区

2

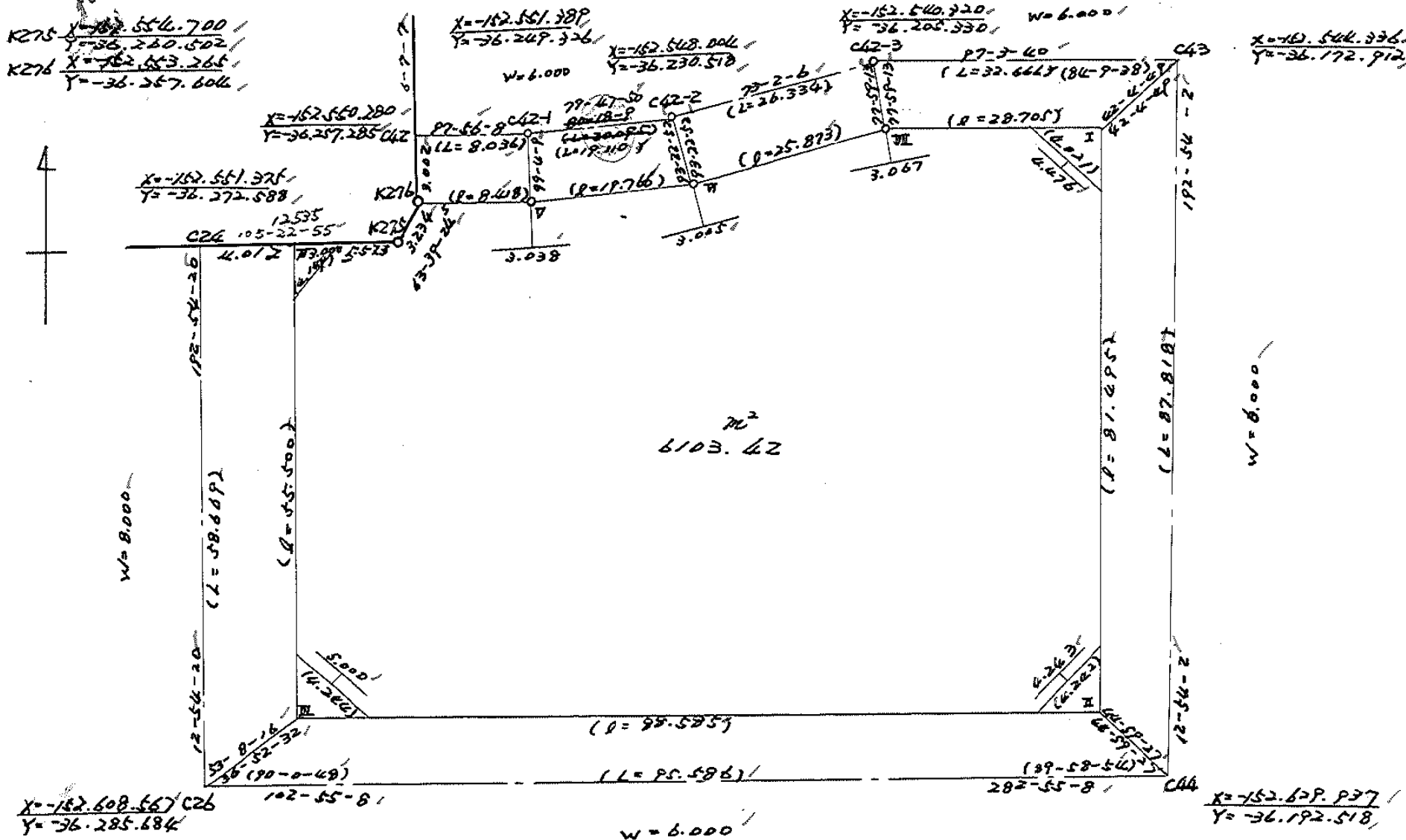
ブロック

16

記入者



点検者



地 地 計 算

画地略図

工区

2

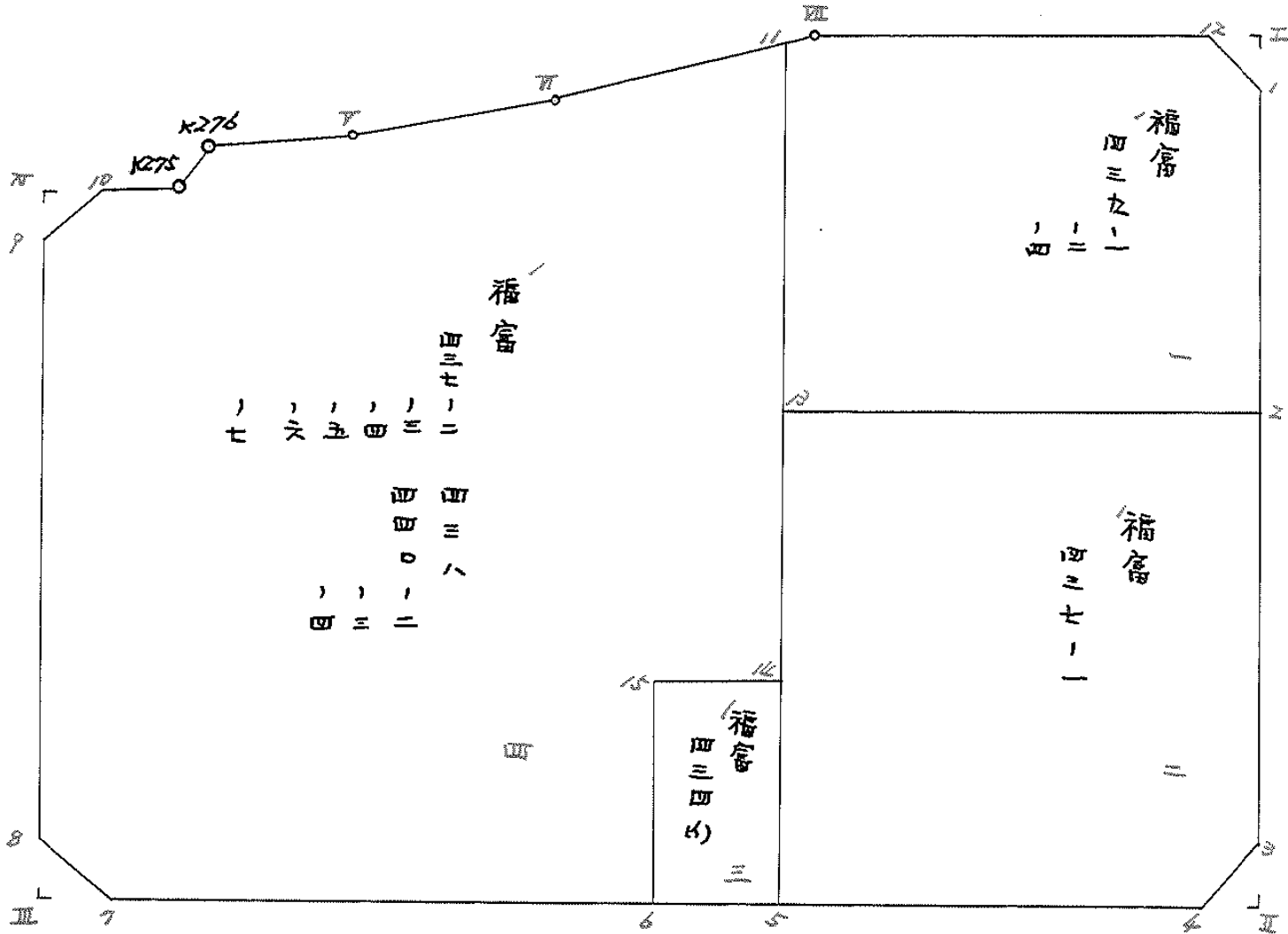
ブロック

16

記入者



点検者



面積計算書

工区

2

ブロック

16

計算者



精算者



備考

福島 439-1.-2.-4

点	①	②	③	④	⑤	⑥	⑧	×	⑤	②	×	⑥
	X	X-(定数)	X _{n-1} -X _{n+1}	Y	Y-(定数)	Y _{n-1} -Y _{n+1}	+	-	+	-		
11	-112,443.863	-112,440 3.863	-34.843	-36,205.677	-36,170 35.677	-8.814	1243.093711			31.404282		
11	-112,443.376	3.776	+2.972	-36,205.065	35.065	-26.122		104.213180		88.187872		
12	-112,446.435	6.435	+6.462	-36,179.555	9.555	-27.817		61.648860		181.784095		
1	-112,449.828	9.828	+38.267	-36,177.248	7.248	+5.703		277.349216				46.049084
2	-112,454.802	44.802	+28.291	-36,185.258	15.258	+36.631		433.189878				1641.142062
13	-112,478.219	38.219	-41.239	-36,213.879	43.879	+20.419	1809.526081					780.393761
							3062.619792	876.411136		301.376249	2477.484907	
							2176.208658					2176.208658
										1/2 = 1088.104329		

面積計算書

工区

2

ブロック

16

計算者



精算者



備考

福富 437-1

434(1)

点	①	②	③	④	⑤	⑥	③	⑤	②	⑥
	X	X-(定数)	X _{n-1} -X _{n+1}	Y	Y-(定数)	Y _{n-1} -Y _{n+1}	+	-	+	-
13	-152,578.29	-152,570 8.29	-34.905	-36,213.879	-36,180 33.879	-38.437	1122.546495		316.930141	
2	-152,584.802	14.802	+45.199	-36,185.258	5.258	=19.777		237.656342	292.739154	
3	-152,623.418	53.418	+40.869	-36,194.102	14.102	+12.438		576.334638		664.413084
4	-152,625.671	55.671	-3.711	-36,197.696	17.696	+29.595	65.669856			1647.583245
5	-152,619.707	49.707	-47.452	-36,223.697	47.697	+16.183	2073.510044			804.408381
							3321.726395	213.990980	608.669295	3116.404710
							2507.735418			2507.735418
								1/2 = 1253.8677075		
14	-152,599.247	-152,590 9.347	+22.640	-36,218.279	8.279	-42.511		201.020560	42.164317	
5	-152,619.707	29.707	+18.080	-36,223.697	13.697	+14.760		247.641760		438.475320
6	-152,617.427	27.427	-22.640	-36,223.639	23.639	+4.511	535.186960			123.723197
15	-152,597.067	7.067	-18.080	-36,228.208	18.208	-14.760	329.200640		104.308920	
							864.387600	442.662320	146.473237	562.198517
							415.725280			415.725280
								1/2 = 207.862640		

面積計算書

工区

ブロック

計算者

精算者

備考

16

福宮 434 (1)

点	①	②	③	④	⑤	⑥	③	⑤	②	⑥
	X	X-(定数)	X _{n-1} -X _{n+1}	Y	Y-(定数)	Y _{n-1} -Y _{n+1}	+	-	+	-
14	-152,599.347	-152,590.347	-22.640	-36,218.879	-36,210.879	+ 5.124	201,020.560			47,894.028
15	-152,597.067	7.067	+ 18.080	-36,228.827	18.827	+ 14.760		340,283.680		106,308.720
6	-152,617.427	27.427	+ 22.640	-36,233.629	27.629	- 5.124		535,186.960	140,535.948	
5	-152,619.707	29.707	- 18.080	-36,223.697	17.697	- 14.760	247,641.760		438,475.320	
							448,662.320	875,470.640	579,011.268	152,202.948
								426,808.320	426,808.320	
									1/2 = 213,404.160	

面積計算書

工区

2

ブロック

16

計算者



精算者



備考

箱号 437-2.-3.-4.-5.-6.-7.
438. 440-2.-3.-4

点	①	②	③	④	⑤	⑥	③	⑤	②	⑥
	X	X-(定数) -153.500	X _{n-1} -X _{n+1}	Y	Y-(定数) -36.200	Y _{n-1} -Y _{n+1}	+	-	+	-
11	-152.542.563	42.563	+ 48.422	-36.205.677	5.677	- 10.933		274.891.694	476.274.279	
14	-152.599.347	99.347	+ 53.504	-36.218.879	18.879	+ 23.144		1010.102.016		2299.286.968
15	-152.597.067	97.067	+ 18.080	-36.229.821	23.821	+ 14.760		521.083.680		1432.708.920
6	-152.617.427	117.427	+ 10.141	-36.233.639	33.639	+ 49.369		341.133.099		5797.253.563
7	-152.607.208	107.208	- 13.814	-36.278.190	78.190	+ 46.806	1080.116.660			5017.977.648
8	-152.603.613	103.613	- 51.845	-36.280.445	80.445	- 8.901	4170.671.025		911.898.013	
9	-152.555.363	55.363	- 50.378	-36.269.389	69.389	- 14.618	3495.679.062		809.296.334	
10	-152.553.235	53.235	- 0.663	-36.265.827	65.827	- 8.887	43.643.301		473.099.445	
K275	-152.554.700	54.700	+ 0.330	-36.260.502	60.502	- 8.223		1.815.060	449.798.100	
K276	-152.553.265	53.265	- 0.274	-36.257.604	57.604	- 11.236	15.783.496		598.485.540	
V	-152.554.426	54.426	- 2.340	-36.249.266	49.266	- 27.792	115.282.440		1512.607.392	
VI	-152.550.925	50.925	- 10.863	-36.229.812	29.812	- 43.589	323.847.756		2219.769.825	
							9245.023.720	2149.025.549	7451.228.928	14547.227.099
							7095.998.171			7095.998.171
							<div style="border: 1px solid black; padding: 5px; display: inline-block;">分筆後の座標なし</div> $\frac{1}{2} = 3547.9990855$			

面積計算書

工区

2

ブロック

16

計算者



精算者



備考

不印 I, II

点	①	②	③	④	⑤	⑥	③ ×	⑤	② ×	⑥
	X	X-(定数)	X _{n-1} -X _{n+1}	Y	Y-(定数)	Y _{n-1} -Y _{n+1}	+	-	+	-
	-152	-152.546		-36	-36.176					
I	546.904	0.904	+0.293	176.578	0.578	-2.307		1.902354	2.085528	
1	549.828	0.828	-0.249	177.248	1.248	+2.977	0.460512			11.995956
12	546.535	0.535	-2.924	179.555	0.555	-0.670	10.996820		0.558450	
							10.855332	1.902354	2.442978	11.995956
							8.951978			8.951978
							x ^{1/2} = 4.475989			
	-152	-152.623		-36	-36.194					
3	623.418	0.418	+0.671	194.102	0.102	-2.926		0.068460	1.222292	
II	626.342	0.342	+2.253	194.772	0.772	+3.594		1.739316		12.01148
4	625.671	0.671	-2.924	197.696	0.696	-0.670	10.807104		1.789570	
							10.807104	1.807758	3.011802	12.01148
							8.999346			8.999346
							x ^{1/2} = 4.499673			

面積計算書

工区

2

ブロック

16

計算者



精算者



備考

スリット III, IV

点	①	②	③	④	⑤	⑥	③ × ⑤		② × ⑥	
	X	X-(定数)	X _{n-1} -X _{n+1}	Y	Y-(定数)	Y _{n-1} -Y _{n+1}	+	-	+	-
7	150 607.208	150.603 6.208	+2.924	36 278.190	36.278 0.190	+0.670		0.55560		2.819280
III	606.537	2.537	-3.595	281.115	2.115	+2.255	11.198425			7.975935
8	603.613	0.613	+0.671	280.665	2.445	-2.925		1.640595	1793025	
							11.198425	2.196155	1.793025	10.795295
							9.002270			9.002270
							× 1/2 = 6.501135			
9	152 555.263	152.552 2.363	-0.796	36 269.289	36.288 6.389	+2.893	2.493666			9.729159
IV	552.439	0.439	-2.128	268.720	2.720	-2.562	7.916160		1.563718	
10	553.235	1.235	+2.924	265.827	0.827	+0.669		2.418168		0.826215
							11.409806	2.418168	1.563718	10.555374
							8.991656			8.991656
							× 1/2 = 6.495828			

計年月日
算日

計算者



検査者



B.NO. 16

各筆面積計算書

地番	算式	隅切	地積	摘要
	福富 439-1, 439-2, 439-4		1088 10	
	" 437-1		1253 86	
	" 434 41		213 40	
	" 437-2, 437-3, 437-4, 437-5	}	3547 99	
	437-6, 437-7, 438			
	440-2, 440-3, 440-4			
	隅切			
	I	4 47		
	II	4 49		
	III	4 50		
	IV	4 49		
	合計	17.95	6103 35	
	全体		6121 37	
	合計		6121 30	
	差		0.07	