

BLOCK NO. 19-1

街区計算

街区略図

工区

之

ブロック

1P-1

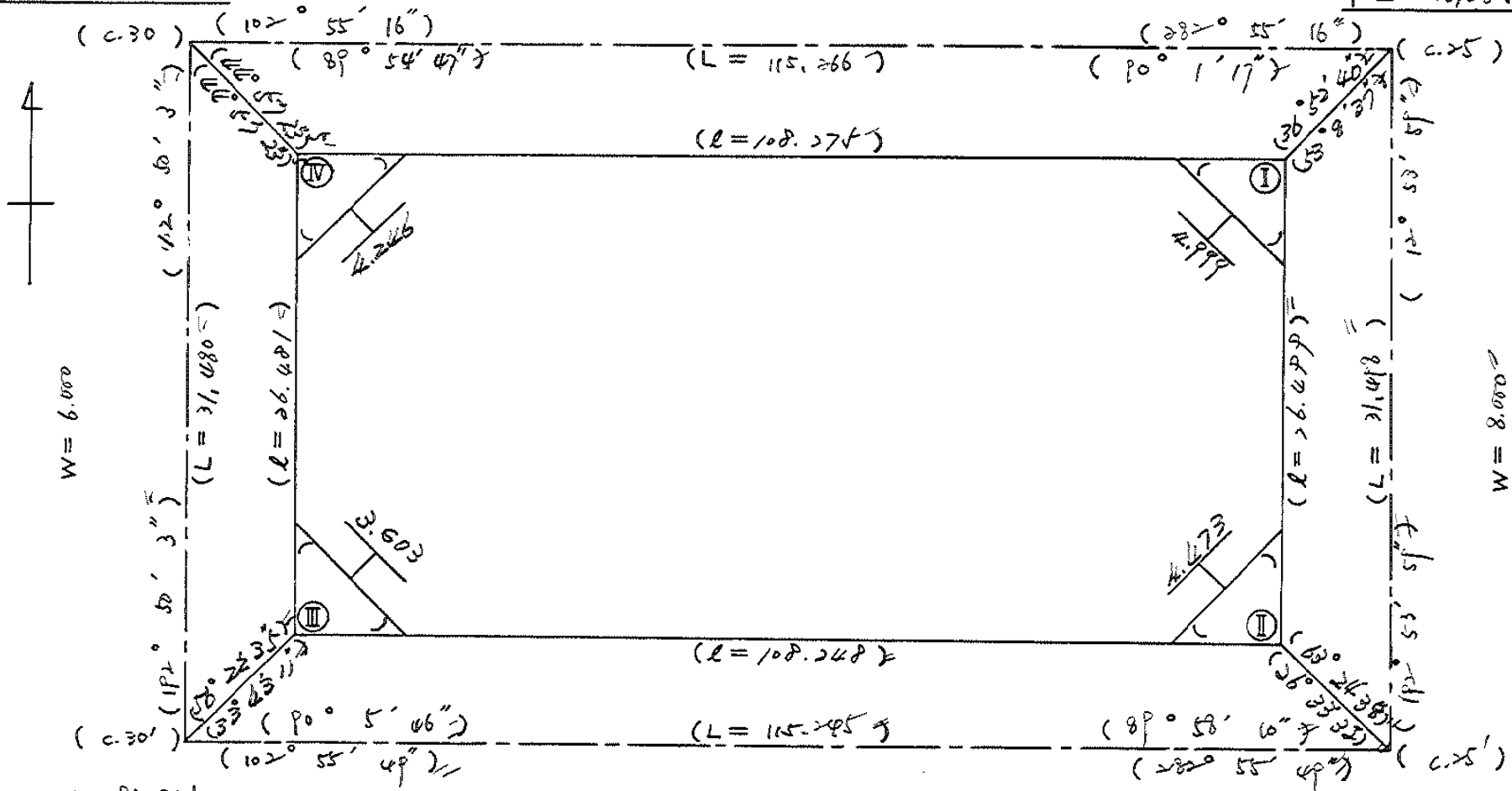
記入者

点検者

$$\begin{aligned} X &= -152,562.137 \\ Y &= -36,393.316 \end{aligned}$$

$$W = 6.000$$

$$\begin{aligned} X &= -152,587.914 \\ Y &= -36,280.957 \end{aligned}$$



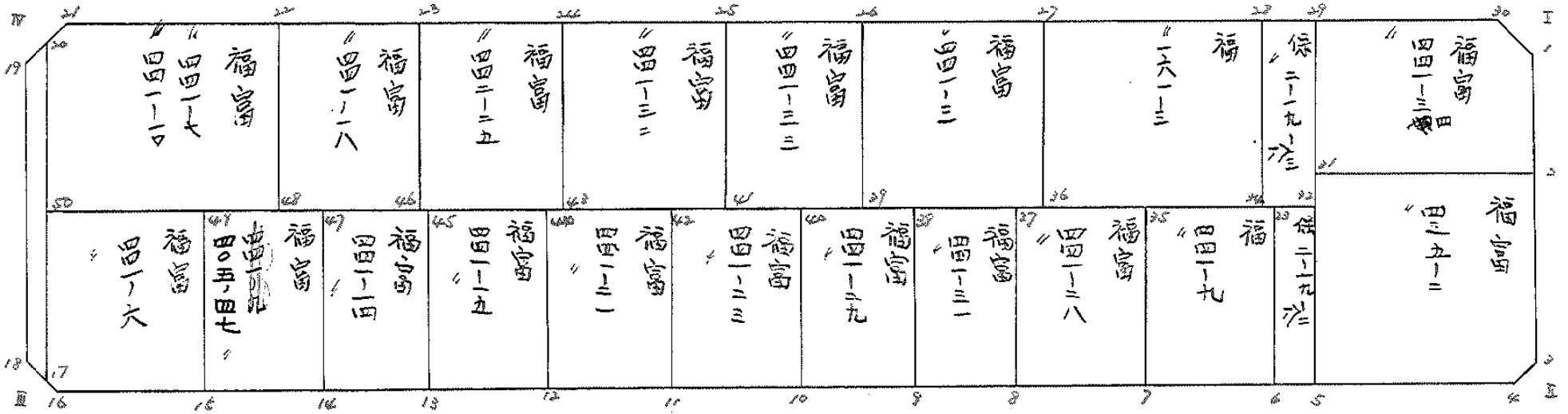
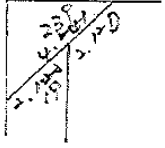
$$\begin{aligned} X &= -152,592.831 \\ Y &= -36,400.309 \end{aligned}$$

$$W = 4.000$$

$$\begin{aligned} X &= -152,617.611 \\ Y &= -36,287.986 \end{aligned}$$

面地計算

BND. 19-1



面積計算書		工区	ブロック	計算者	精算者	備考	福富 441-34	福富 435-2
			19-1					
点	①	②	③	④	⑤	⑥	③ × ⑤	② × ⑥
	X	X-(定数)	X _{n-1} -X _{n+1}	Y	Y-(定数)	Y _{n-1} -Y _{n+1}	+ -	+ -
30	⁻¹⁵² 597.273	^{-152,580} 9.273	+ 6.443	⁻³⁶ 288.448	^{-36,280} 8.448	-14.668	54.430464	136.016364
1	592.868	12.868	+ 11.105	286.194	6.194	-0.534	68.784370	1.871512
2	600.378	20.378	+ 3.995	287.914	7.914	+17.072	31.616430	347.893216
31	596.863	16.863	+ 13.953	203.266	23.266	+12.948	224.630698	218.342124
29	586.425	6.425	- 7.570	200.862	20.862	-14.818	158.342580	95.205650
							482.973078	154.831264
							228.093526	566.235340
							328.141814	328.141814
							x 1/2 = 134.070907	
2	⁻¹⁵² 600.378	^{-152,590} 10.378	+ 16.962	⁻³⁶ 287.914	^{-36,280} 7.914	-12.274	134.237268	127.379572
3	613.825	23.825	+ 14.949	290.992	10.992	+ 5.473	164.319408	130.394224
4	615.327	25.327	- 1.579	293.387	13.387	+15.816	21.138073	400.571832
5	612.246	22.246	-18.464	206.808	26.808	+ 9.879	484.982912	219.768234
31	596.863	6.863	- 11.868	203.266	23.266	-18.894	276.120888	129.669522
							792.241873	298.556676
							257.049094	750.734291
							493.685197	493.685197
							x 1/2 = 246.8425985	

面積計算書

工区

Z

ブロック

19-1

計算者



精算者



備考

保 2-19-2
福富 ~~241-9~~ ⁴⁴¹⁻⁹

441-9

点	①	②	③	④	⑤	⑥	③ × ⑤		② × ⑥	
	X	X-(定数)	X _{n-1} -X _{n+1}	Y	Y-(定数)	Y _{n-1} -Y _{n+1}	+	-	+	-
22	⁻¹⁵² 599.580	^{-152.590} 9.580	-13.327	⁻³⁶ 303.891	^{-36.300} 3.891	-0.039	51.855257		0.373620	
23	598.919	8.919	+12.006	306.769	6.769	+5.794		81.268614		51.676686
6	611.586	21.586	+13.327	309.685	9.685	+0.039		129.071995		0.841854
5	612.246	22.246	-12.006	306.808	6.808	-5.794	81.736848		128.893324	
							133.592205	210.340609	129.266944	52.518540
								76.748404		76.748404
								x 1/2 = 38.374202		
6	⁻¹⁵² 611.586	^{-152.590} 21.586	+10.764	⁻³⁶ 309.685	^{-36.300} 9.685	+11.202		104.249360		241.806372
7	609.683	19.683	-14.568	317.971	17.971	+5.363	261.801528			105.559929
25	597.018	7.018	-10.764	315.048	15.048	-11.202	161.976672		78.615636	
23	598.919	8.919	+14.568	306.769	6.769	-5.363		98.610792	67.832597	
							423.778200	202.860132	126.448233	347.366301
							220.918068			220.918068
								x 1/2 = 110.459034		

面積計算書		工区	2	ブロック	19-1	計測者	精算者	備考	福富 441-28	福富 441-31
点	①	②	③	④	⑤	⑥	③ × ⑤	② × ⑥		
	X	X-(定数)	X _{n-1} -X _{n+1}	Y	Y-(定数)	Y _{n-1} -Y _{n+1}	+	-	+	-
7	⁻¹⁵² 607.683	^{-152.590} 19.683	+10.518	⁻³⁶ 317.971	^{-36.310} 7.971	+12.276		83.838978		241.528508
8	607.536	17.536	-14.815	327.324	17.324	+6.439	256.615060			112.914306
27	594.868	4.868	-10.518	324.410	14.410	-12.276	151.564980			59.759568
25	597.018	7.018	+14.815	315.048	5.048	-6.439			74.786120	45.188902
									408.219460	158.625098
									104.968470	354.542812
									249.594342	249.594342
									× 1/2 = 124.797171	
8	⁻¹⁵² 607.536	^{-152.590} 17.536	+10.944	⁻³⁶ 327.324	^{-36.320} 7.324	+10.420		89.153856		182.725120
9	605.812	15.812	-14.393	334.830	14.830	+4.601	213.448190			72.751012
28	593.143	3.143	-10.944	331.925	11.925	-10.420	130.507200			32.750060
27	594.868	4.868	+14.393	324.410	4.410	-4.601			63.473130	22.397668
									363.955390	143.626986
									55.147728	255.476132
									200.328406	200.328406
									× 1/2 = 100.164202	

面積計算書		工区	2	ブロック	19-1	計算者		精算者		備考	福富 441-29	福富 441-23
点	①	②	③	④	⑤	⑥	③ × ⑤	② × ⑥				
	X	X-(定数)	X _{n-1} -X _{n+1}	Y	Y-(定数)	Y _{n-1} -Y _{n+1}	+ -	+ -				
9	-152 605.812	-152.590 15.812	+10.701	-36 334.830	-36.330 4.830	+11.479	54.685930	181.50968				
10	603.844	13.844	-14.641	343.404	13.404	+5.681	196.247964	78.647754				
40	591.171	1.171	-10.701	340.511	10.511	-11.479	112.478211	13.461909				
38	593.143	3.143	+14.641	331.925	1.925	-5.681	28.183925	17.855993				
							308.726175	79.869755				
							31.297292	280.153712				
							228.856420	228.856420				
							× 1/2 = 114.428210					
11	-152.580 601.876	-152.580 71.876	+14.640	-36 351.976	-36.340 11.976	-5.670	175.328640	124.036920				
10	603.844	23.844	-10.705	343.404	3.404	-11.465	36.439820	273.371460				
40	591.171	11.171	-14.640	340.511	0.511	+5.670	7.681040	63.339570				
42	589.204	9.204	+10.705	349.076	9.076	+11.465	97.137170	105.523860				
							43.920860	272.465810				
							397.409380	168.863430				
							228.546950	228.546950				
							× 1/2 = 114.272475					

面積計算書		工区	2	ブロック	1P-1	計算者	精算者	備考	福富 441-21	福富 441-15		
点	①	②	③	④	⑤	⑥	③	×	⑤	②	×	⑥
	X	X-(定数)	X _{n-1} -X _{n+1}	Y	Y-(定数)	Y _{n-1} -Y _{n+1}	+		-	+		-
11	⁻¹⁵² 601.876	^{-152.590} 21.876	+10.681	⁻³⁶ 351.976	^{-36.360} 11.976	+11.573			127.915656			253.170948
12	599.885	19.885	-14.660	360.647	20.647	+5.757	302.625020					114.477965
44	587.216	7.216	-10.681	357.733	17.733	-11.573	189.606173			83.540768		
42	589.204	9.204	+14.660	349.074	9.074	-5.757			133.024840	52.987628		
							492.091193		260.940496	136.499196		367.648893
							231.150697					231.150697
									$\times \frac{1}{2} = 115.5753485$			
12	⁻¹⁵² 599.885	^{-152.590} 19.885	+10.790	⁻³⁶ 360.647	^{-36.360} 10.647	+11.099			114.881130			220.703615
13	598.006	18.006	-14.548	368.932	18.932	+5.277	273.967936					95.07662
45	595.337	5.337	-10.790	365.924	15.924	-11.099	171.819960			59.225363		
44	587.216	7.216	+14.548	357.733	7.733	-5.277			117.499684	38.078832		
							445.787896		227.380814	97.314195		315.721277
							218.607082					218.607082
									$\times \frac{1}{2} = 109.203541$			

面積計算書		工区	2	ブロック	19-1	計測者	精測者	備考	補償	441-14	
									補償	405-47	
点	①	②	③	④	⑤	⑥	③ × ⑤	② × ⑥			
	X	X-(定数)	X _{n-1} -X _{n+1}	Y	Y-(定数)	Y _{n-1} -Y _{n+1}	+	-	+	-	
13	⁻¹⁵² 598.006	^{-152.580} 18.006	+10.945	⁻³⁶ 368.832	^{-36.360} 8.832	+10.619		96.666240		187.606514	
14	596.282	16.282	-14.394	376.343	16.343	+4.697	235.241142			74.848350	
47	593.612	3.612	-10.945	373.429	13.429	-10.619	146.980425			37.633428	
45	585.337	5.337	+14.394	365.924	5.924	-4.597		85.270056	24.534189		
								382.221547	181.936296	62.167617	267.452868
								200.285251			200.285251
								× 1/2 = 100.1426255			
14	⁻¹⁵² 596.282	^{-152.580} 16.282	+10.759	⁻³⁶ 376.343	^{-36.370} 6.343	+11.235		68.244337		182.928270	
15	594.371	14.371	-14.566	384.664	14.664	+5.344	213.595824			76798.624	
49	591.716	1.716	-10.759	381.687	11.687	-11.235	125.740433			19.279260	
47	593.612	3.612	+14.566	373.429	3.429	-5.344		49.946816	19.302528		
								339.336257	118.191151	38.581788	259.726894
								221.145106			221.145106
								× 1/2 = 110.572553			

面積計算書

工区

2

ブロック

19-1

計算者



精算者



備考

福富 441-6
水路

点	①	②	③	④	⑤	⑥	③ × ⑤		② × ⑥		
	X	X-(定数)	X _{n-1} -X _{n+1}	Y	Y-(定数)	Y _{n-1} -Y _{n+1}	+	-	+	-	
15	⁻¹⁵² 594.371	^{-152.570} 24.371	+10.284	⁻³⁶ 394.664	^{-36.380} 4.664	+13.305		47.964576		324.256155	
16	592.000	22.000	-2.970	394.992	14.992	+10.704	44.526240			235.488000	
17	591.401	21.401	-12.788	395.368	15.368	-2.401	196.525984			51.383801	
18	599.212	9.212	-9.685	392.591	12.591	-13.681	121.943835			126.029372	
19	581.716	11.716	+15.159	381.687	1.687	-7.927		25.573233		92.872732	
								362.996059	73.537809	270.285905	559.766155
								289.458250			289.458250
								x 1/2 = 144.729125			-
17	⁻¹⁵² 591.401	^{-152.566} 31.401	+22.071	⁻³⁶ 395.368	^{-36.380} 15.368	+6.568			39.187128	206.241768	
18	589.602	29.602	-22.743	396.497	16.497	-3.644	375.191271			107.859688	
19	588.658	8.658	-22.071	391.724	11.724	-6.568	258.724044			56.815744	
20	567.531	7.531	+22.743	389.929	9.929	+3.644		225.815247		27.462964	
								633.951675	565.002375	164.735232	233.684732
								68.949300			68.949300
								x 1/2 = 34.474650			

面積計算書

工区 2 ブロック 19-1 計算者 (印) 精算者 (印) 備考 福富 441-7 441-10 福富 441-18

点	①	②	③	④	⑤	⑥	③ × ⑤		② × ⑥	
	X	X-(定数)	X _{n-1} -X _{n+1}	Y	Y-(定数)	Y _{n-1} -Y _{n+1}	+	-	+	-
21	566.404	6.404	-2.274	388.134	18.134	+16.619	41.236715			106.428076
20	567.531	7.531	+12.808	389.929	19.929	+4.457		255.250632		23.565667
50	579.212	19.212	+15.429	392.591	22.591	-13.661		268.556529		262.655132
48	582.960	22.960	-9.407	376.268	6.268	-19.281	58.963076			462.691760
22	569.805	9.805	-16.556	373.310	3.310	+11.866	54.800360			116.326130
							155.000152			
								603.807171		705.146892
								448.807019		448.807019
								x 1/2 = 224.4035095		
22	569.805	9.805	-10.919	373.310	13.310	-17.708	145.331890			124.601940
23	572.041	12.041	+15.390	363.560	3.560	-6.774		54.788600		81.565734
46	525.195	25.195	+10.919	366.536	6.536	+12.708		71.366586		320.178060
48	582.960	22.960	-15.390	376.268	16.268	+6.774	250.364520			159.531060
								295.696410		126.154984
										206.167674
										275.709100
								269.541426		269.541426
								x 1/2 = 106.770713		

面積計算書

工区

2

ブロック

1P-1

計算者



精算者



備考

福富 442-25
福富 441-3Z

点	①	②	③	④	⑤	⑥	③ × ⑤		② × ⑥	
	X	X-(定数)	X _{n-1} -X _{n+1}	Y	Y-(定数)	Y _{n-1} -Y _{n+1}	+	-	+	-
23	⁻¹⁵² 577.041	^{-152.570} 2.041	-10.917	⁻³⁶ 353.560	^{-36.350} 13.560	-12.726	148.034520			25.993766
24	576.278	4.278	+15.389	353.810	3.810	-6.757		59.632080		28.906466
43	587.430	17.430	+10.917	356.803	6.803	+12.726		76.268351		221.814180
46	585.195	15.195	-15.389	356.536	16.536	+6.757	254.472506			102.672615
							402.507026	122.900461	54.880212	324.686795
							269.606583			269.606583
							× 1/2 = 134.8032915			
24	⁻¹⁵² 576.278	^{-152.570} 4.278	-10.468	⁻³⁶ 353.810	^{-36.380} 13.810	-14.693	144.583080			62.856654
25	576.962	6.962	+15.834	342.110	2.110	-8.687		33.409760		60.478896
41	590.112	20.112	+10.468	345.123	5.123	+14.693		59.627564		291.505616
43	587.430	17.430	-15.834	356.803	16.803	+8.687	266.058702			151.444410
							410.621782	87.037304	123.335469	446.920026
							223.586678			223.586678
							× 1/2 = 161.792239			

面積計算書

工区

2

ブロック

19-1

計算者



精算者



備考

福富 441-33
福富 441-3

点	①	②	③	④	⑤	⑥	③ × ⑤		② × ⑥	
	X	X-(定数)	X _{n-1} -X _{n+1}	Y	Y-(定数)	Y _{n-1} -Y _{n+1}	+	-	+	-
25	-152 576.952	-152.570 6.962	-10.914	-36 342.110	-36.330 12.110	-12.760	132.168540		88835120	
26	579.198	9.198	+15.388	332.363	2.363	-6.732		36.361844	61.920936	
29	592.350	22.350	+10.914	335.378	5.378	+12.760		58.695492		285.186000
41	590.112	20.112	-15.388	345.123	15.123	+6.732	232.712724			135.392984
							264.881264	95.057336	150.756056	420.579984
							269.823928			269.823928
							× 1/2 = 134.911964			
26	-152 579.198	-152.570 9.198	-10.198	-36 332.363	-36.310 22.363	-15.890	228.057876		146.156220	
27	582.152	12.152	+16.107	319.688	9.688	-9.855		152.823216	119.757960	
26	595.205	25.205	+10.198	322.508	12.508	+15.890		127.558584		402.096456
29	592.350	22.350	-16.107	335.378	25.378	+9.855	408.763466			220.259250
							636.821320	280.379800	265.916180	622.355700
							256.441520			256.441520
							× 1/2 = 178.220760			

面積計算書						工区	ブロック	計算者	精算者	備考
						2	19-1			福富 161-3 保 2-19-13
点	①	②	③	④	⑤	③ × ⑤		② × ⑥		
	X	X-(定数)	X _{n-1} -X _{n+1}	Y	Y-(定数)	+	-	+	-	
27	⁻¹⁵² 582.152	^{-152.580} 2.152	-9.666	⁻³⁶ 319.488	^{-36.300} 19.488	-18.221	188.371008		39.211592	
28	585.639	5.639	+16.642	304.287	4.287	-12.173		71.344254	68.643547	
34	598.794	18.794	+9.666	307.315	7.315	+18.221		70.706790	342.465424	
36	595.305	15.305	-16.642	322.508	22.508	+12.173	374.578136		186.307765	
							662.949144	142.051066	107.855139	528.753239
							220.898100			420.898100
							× 1/2 = 210.449050			
28	⁻¹⁵² 585.639	^{-152.580} 5.639	-12.369	⁻³⁶ 304.287	^{-36.300} 4.287	-6.453	53.025903		36.388467	
29	586.425	6.425	+13.941	300.862	0.862	-0.396		12.017142	2544300	
32	599.580	19.580	+12.369	303.891	3.891	+6.453		48.127791	126.348760	
34	598.794	18.794	-13.941	307.315	7.315	+0.396	101.978615		7.442424	
							155.004318	60.146921	38.932767	133.792166
							94.859397			94.859397
							× 1/2 = 47.4296985			

面積計算書							工 区	2	ブ コ ク	19-1	計 算 者	精 算 者	備 考	隔切. I. II
点	①	②	③	④	⑤	⑥	③	×	⑤	②	×	⑥		
	X	X-(定数)	X _{n-1} -X _{n+1}	Y	Y-(定数)	Y _{n-1} -Y _{n+1}	+		-	+		-		
I	-152 589.944	-152.580 9.944"	+3.595"	-36 285.525	-36.280 5.525"	-2.254"			19.862375	22.413776				
1	592.868	12.868"	-0.671"	286.194	6.194"	+2.923"	4.156176					37.613164		
30	589.273	9.273"	-2.924"	288.668	8.668"	-0.669"	24.701952			6.203637				
							28.858126		19.862375	28.617613		37.613164		
							8.995751					8.995751		
							x 1/2 = 4.4978755"							
3	-152 613.825	-152.610 3.825"	+0.668"	-36 290.992	-36.290 0.992"	-1.949"			0.464416	7.654825				
II	615.775	5.775"	+1.502"	291.638	1.638"	+2.395"			2.169876			18.831125		
4	615.327	5.327"	-1.950"	293.387	3.387"	-0.666"	6.606650			2.375862				
							6.606650		2.606292	9.830767		13.831125		
							4.000358					4.000358		
							x 1/3 = 2.000179"							

面積計算書		工区	2	ブロック	19-1	計算者	精算者	備考	隅切Ⅲ, Ⅳ			
点	①	②	③	④	⑤	⑥	③	×	⑤	②	×	⑥
	X	X-(定数)	X _{n-1} -X _{n+1}	Y	Y-(定数)	Y _{n-1} -Y _{n+1}	+		-	+		-
	-152	-152.580		-36	-36.390							
18	589.602	9.602	+0.468	396.697	6.697	-1.949			2.910656	18.714298		
16	592.000	12.000	+1.950	394.992	4.992	+0.444			9.734600			5.328000
Ⅲ	591.552	11.552	-2.398	396.941	6.941	+1.505			16.644518			17.385760
									16.644518	12.645056	18.714298	22.713760
									2.999462			2.999462
									x 1/2 = 1.999731			
	-152	-152.580		-36	-36.380							
19	568.658	8.658	+0.671	391.724	11.724	-2.924			7.866804	25.315992		
21	566.404	6.404	-2.925	388.134	8.134	-0.666			23.791950	4.265064		
Ⅳ	565.733	5.733	+2.254	391.058	11.058	+3.590			24.924732			20.581470
									23.791950	32.791536	29.581056	20.581470
									8.999586			8.999586
									x 1/2 = 4.499793			

計年月日

計算者



検査者



B.NO. 19-1

各筆面積計算書

2根-1

地番	算式	隅切	地積	摘要
	福富 441a34		166 07	
	福富 435a2		246 86	
	保 2-19-2		38 37	
	福富 441a47 441a9		110 45	
	福富 441a28		126 79	
	福富 441a31		100 16	
	福富 441a29		116 42	
	福富 441a23		116 27	
	福富 441a21		115 57	
	福富 441a15		109 20	
	福富 441a14		100 16	
	福富 405a47		110 57	
	福富 441a6		146 72	
	福富 441a7 441a10		226 60	
	福富 441a18		136 77	
	福富 442a26		136 80	
	福富 441a32		161 79	
	福富 441a33		136 91	
	福富 441a3		128 22	
	福富 161a3		210 66	
	保 2-19-3		47 42	
	水路		26 47	
	計		2856 79	
	念付		2854 83	

差 0.061

