

BLOCK NO. 26

街区計算

街区略図

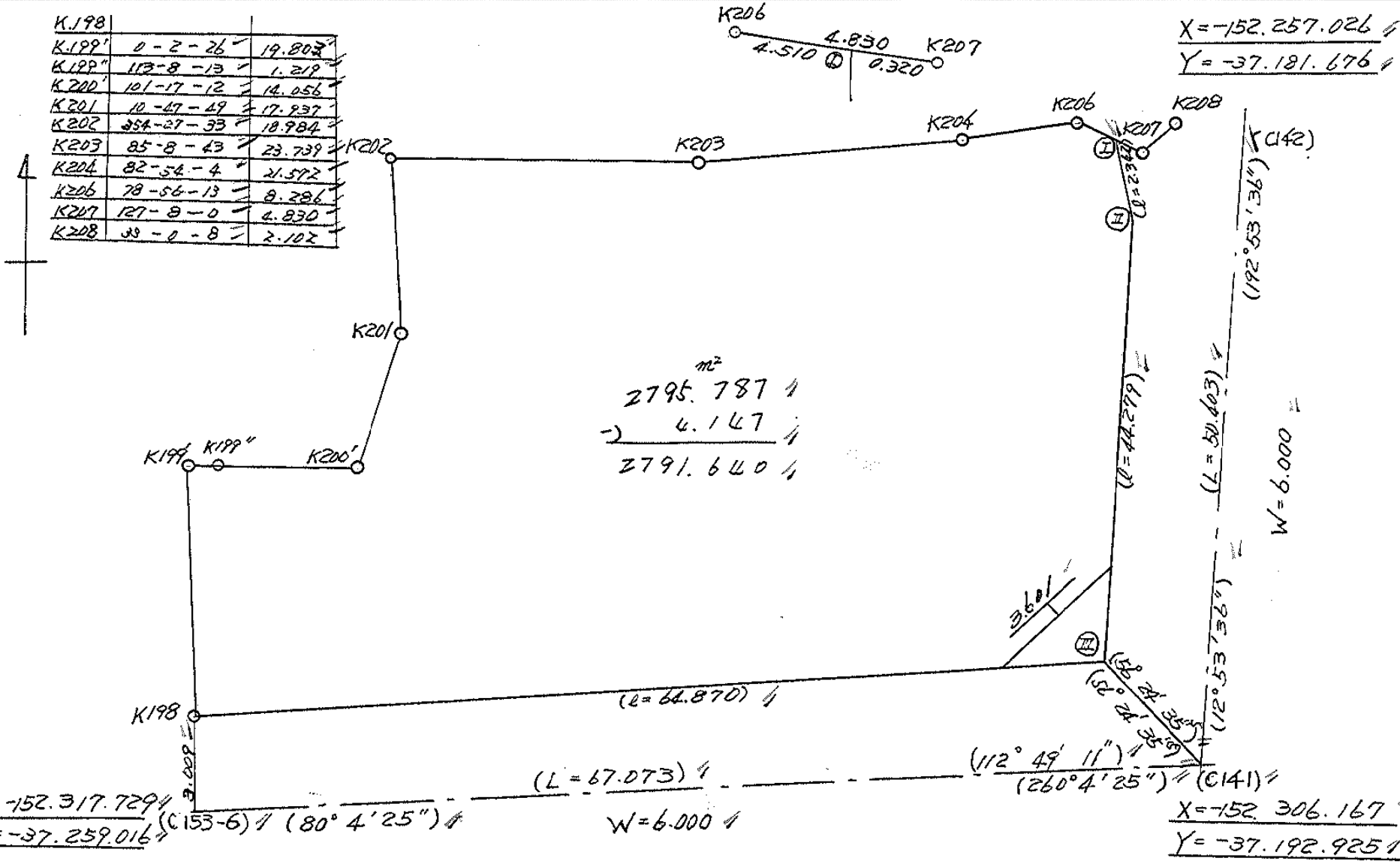
工区

ブロック 26

記入者

点検者

K198		
K199'	0-2-26	19.803
K199"	113-8-13	1.219
K200'	101-17-12	14.056
K201	10-47-49	17.937
K202	354-27-33	18.984
K203	85-8-43	23.739
K204	82-54-4	21.572
K206	78-56-13	8.286
K207	127-8-0	4.830
K208	33-0-8	2.102



$$X = -152.257.026$$

$$Y = -37.181.676$$

$$2795.787 \text{ m}^2$$

$$\rightarrow 4.147$$

$$2791.640$$

$$X = -152.317.729$$

$$Y = -37.259.016$$

$$X = -152.306.167$$

$$Y = -37.192.925$$

$$W = 6.000$$

$$W = 6.000$$

面積計算書

工区

ウ

ブロック

26

計算者



精算者



備考

全体

点	①	②	③	④	⑤	⑥	③ × ⑤		② × ⑥	
	X	X-(定数)	X _{n-1} -X _{n+1}	Y	Y-(定数)	Y _{n-1} -Y _{n+1}	+	-	+	-
	-152	-152.200		-37	-37.100					
I	258.105	58.105	+5.006	186.070	86.070	-4.116		430.866420	239.160180	
II	260.388	60.388	+45.451	185.550	85.550	+9.335		3888.333050		563.721930
III	303.556	103.556	+54.346	195.405	95.405	+73.755		5184.880130		7637.772780
K198	314.734	114.734	-8.625	259.305	159.305	+63.886	1374.005625			7329.896320
K199	294.931	94.931	-19.324	259.291	159.291	-1.135	3078.139284		107.746685	
K199'	295.410	95.410	+3.230	258.170	158.170	-14.905		510.889100	1422.086050	
K200	298.161	98.161	-14.868	244.386	144.386	-17.144	2146.731048		1682.872184	
K.201	280.542	80.542	-36.514	241.026	141.026	-1.527	5149.623364		122.987634	
K.202	261.647	61.647	-20.904	242.859	142.859	-21.821	2986.324536		1345.199187	
K203	259.638	59.638	-4.675	219.205	119.205	-45.061	557.283375		2687.347918	
K.204	256.972	56.972	-4.256	197.798	97.798	-29.539	416.228288		1682.895908	
K.206	255.382	55.382	+1.133	189.666	89.666	-11.728		101.591578	649.520096	
								15708.135520	10110.560278	9939.815862
										15531.391084
								5591.575242		5591.575242
										2795.787621
										2795.78
										4.15
										2.791.63

2795.78

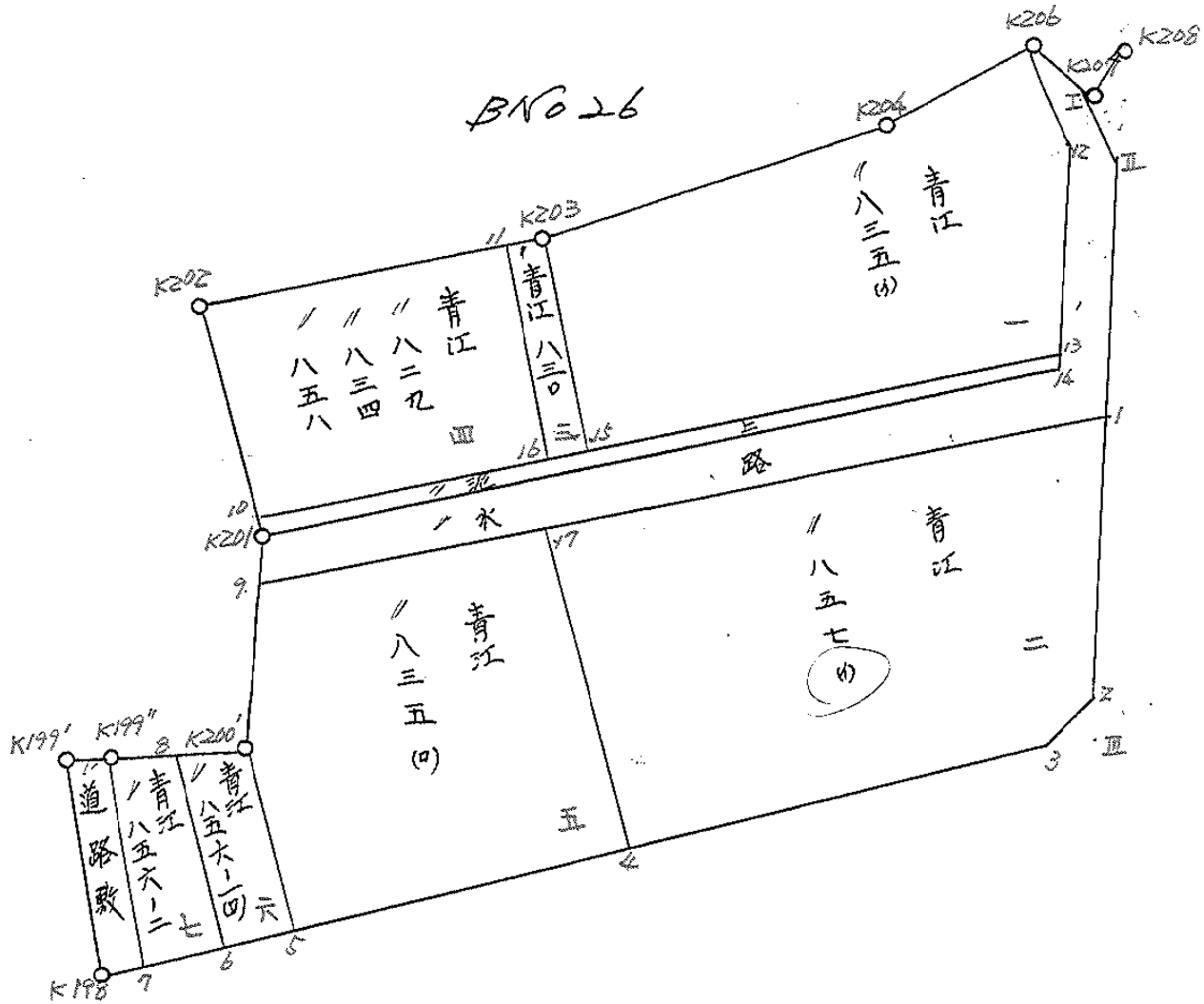
4.15

112

= 2.791.63

面地計算

BN 26





面積計算書										工区	2	ブロック	26	計算者	精算者	備考	1. 青江835(4)	2. 青江857(4)
点	①	②	③	④	⑤	⑥	③ × ⑤		② × ⑥									
	X	X-(定数)	X _{n-1} -X _{n+1}	Y	Y-(定数)	Y _{n-1} -Y _{n+1}	+	-	+	-								
K205	-152 255.392	-152, 280 5.392	+ 3.244	-37 189.666	-37, 180 9.666	- 9.233			31.346504	149.672006								
12	260.216	10.216	+ 19.810	188.565	8.565	+ 2.318			169.677450	23.620688								
13	275.192	25.192	+ 17.249	191.984	11.984	+ 29.067			206.717016	732.254864								
15	277.465	27.465	- 15.854	217.632	37.632	+ 27.221	+ 85.328	1281		747.624764								
K203	259.638	9.638	- 20.493	219.205	39.205	- 19.834			803.428064	191.160092								
K204	256.972	6.972	- 4.256	197.798	17.798	+ 29.539			74.748228	204.944908								
									1264.504481	4407.741170								
									1056.763311	1056.763311								
									13.528.381444									
1	-152 279.063	-152, 270 9.063	+ 18.754	-37 189.814	-37, 180 9.814	- 26.830			184.051746	243.160290								
2	200.632	20.632	+ 25.010	194.738	14.738	+ 8.546			368.597380	261.721072								
3	204.073	34.073	+ 6.718	198.360	18.360	+ 22.355			123.342480	761.701915								
4	207.350	37.350	- 22.195	217.093	37.093	+ 23.208			823.279134	816.819200								
17	281.878	11.878	- 28.227	221.568	41.568	- 27.279			1175.834016	324.019962								
									1399.113151	675.991616								
									567.180252	1070.301787								
									1323.121434	1323.121434								
									42.661.560767									

57-2

面積計算書		工区	ブロック	26	計測者	精算者	備考		
		3					5.青江 855(12) 6.青江 856-1(10)		
点	①	②	③	④	⑤	⑥	③ × ⑤	② × ⑥	
	X	X-(定数)	X _{n-1} -X _{n+1}	Y	Y-(定数)	Y _{n-1} -Y _{n+1}	+ -	+ -	
	-152	-152,280		-37	-37,210				
17	281.878	1.878	23.644	221.568	11.568	24.527	274.103760	46.061706	
4	207.350	27.350	29.944	217.093	7.093	21.072	212.371513	576.319200	
5	311.819	31.819	8.189	242.640	32.140	27.293	4299.928960	368.625967	
K200	298.161	18.161	28.164	244.386	34.386	-1.020	968.467308	18.524220	
9	283.655	3.655	16.283	241.620	31.620	-22.818	1514.868460	83.399790	
							1783.244724	1486.675273	147.985716
							296.769664		1296.769451
							Σ = 648.386725		
K200	-152	-152,280		-37	-37,210				
	298.161	8.161	15.092	244.386	4.386	-8.932	66.193512	72.894052	
5	311.819	31.819	14.897	242.640	2.640	5.341	39.328080	116.535279	
6	213.258	23.058	-15.092	249.727	9.727	8.932	1146.799896	205.954056	
8	296.727	6.727	-14.897	251.572	11.572	-5.341	1172.389086	35.928907	
							319.187968	105.521592	108.822959
							213.666376		23.666376
							Σ = 106.833188		



分筆後の座標なし

面積計算書										
	工区	3	ブロック	26	計算者		精算者		備考	7.青江856-2 道路敷
点	①	②	③	④	⑤	⑥	③ × ⑤	② × ⑥		
	X	X-(定数)	X _{n-1} -X _{n+1}	Y	Y-(定数)	Y _{n-1} -Y _{n+1}	+	-	+	-
8	-152 296.727	-152, 290 6.727	+ 17.648	-37 257.572	-37, 240 11.472	- 8.443		204.222656	56.796061	
6	213.058	23.048	+ 17.797	249.727	9.727	+ 6.525		173.111419		150.684030
7	214.524	24.524	- 17.648	258.107	18.107	+ 8.443	319.552336			207.056132
K199	295.410	5.410	- 17.797	258.170	18.170	- 6.535	223.371490		25.354350	
							662.723826	377.334075	192.150411	1357.740164
							265.589751			265.589751
								1/2 = 132.79		
K199	-152 295.410	-152, 290 5.410	+ 19.593	-37 258.170	-37, 250 8.170	- 1.184		160.074810	26.405460	
7	214.524	24.524	+ 19.324	258.107	8.107	+ 1.135		156.659668		27.834740
K198	214.734	24.734	- 19.593	259.205	9.305	+ 1.184	192.312865			29.285056
K199	294.931	4.931	- 19.324	259.291	9.291	- 1.135	179.539284		5.596685	
							361.852149	316.734478	12.002125	57.119796
							45.117671			45.117671
								1/2 = 22.55		

面積計算書						工区	ブロック	2/	計測者	精算者	備考
											青江 830 青江 834 858
点	①	②	③	④	⑤	⑥	③ × ⑤		② × ⑥		
	X	X-(定数)	X _{n-1} -X _{n+1}	Y	Y-(定数)	Y _{n-1} -Y _{n+1}	+	-	+	-	
K203	-152 259.638	-112, 250 9.138	+17.626	-37 219.205	-37, 210 9.205	3.964		162.228 920		38.205 032	
15	277.665	27.665	+18.060	217.632	7.632	+0.822		137.631 780		22.576 230	
16	277.678	27.678	-17.626	220.027	10.027	+3.964	176.715 848			109.715 592	
11	259.841	9.841	-18.060	221.596	11.596	-0.822	209.191 840			8.089 302	
							385.907 688	298.910 200	46.294 334	132.291 822	
							85.997 488			85.997 488	
							Σ = 62.998 744				
11	-152 259.841	-152, 250 9.841	+16.031	-37 221.596	-37, 220 1.596	-22.832		25.585 476		224.689 712	
16	277.678	27.678	+19.706	220.027	0.027	+19.526		0.532 062		540.440 628	
10	279.547	29.547	-16.031	241.122	21.122	+22.832	338.606 782			674.617 106	
K202	261.647	11.647	-19.706	242.859	22.859	-19.526	450.459 454			227.419 322	
							789.066 236	26.117 538	452.109 034	1215.057 732	
							762.948 698			762.948 698	
							Σ = 381.476 349				

面積計算書											工区	ウ	ブロック	26	計算者	精算者	備考	水路 泥上		
点	①	②	③	④	⑤	⑥	③	×	⑤	②	×	⑥								
	X	X-(定数)	X _{n-1} -X _{n+1}	Y	Y-(定数)	Y _{n-1} -Y _{n+1}	+	-	+	-										
I	-152 259.104	-152.250		-37 186.070	-37.180															
II	260.388	10.388	+20.848	186.550	4.550	+3.744			30.386	420	33.360	180								
I	279.063	29.063	+23.267	189.814	9.814	+6.070			116.316	900		38.892	672							
9	288.655	33.655	+1.479	241.620	61.620	+1.212			228.342	338		1629.562	410							
K201	280.542	30.542	-7.439	241.026	61.026	-49.402	443.972	414	91.134	980		1723.439	860							
14	276.216	26.216	-20.326	192.218	10.218	-52.461	248.343	068	1508.835	884		1374.317	576							
12	260.216	10.216	-20.824	188.565	8.565	-2.542	178.443	210				26.071	232							
K206	255.382	4.382	-2.111	189.666	9.666	-2.495	20.402	926				13.428	090							
							901.163	618	466.181	638	2947.012	962	3391.794	942						
							424.981	980				434.981	980							
									X ₂ = 217.490	990										
13	-152 275.192	-152.270		-37 191.984	-37.190															
14	276.216	6.216	+5.350	192.218	2.218	+49.042			243.909	568		243.909	568							
K201	280.542	10.542	+3.331	241.026	41.026	+48.904			11.866	300		204.845	072							
10	279.547	9.547	-5.350	241.122	41.122	-49.042	169.967	606				515.545	968							
							280.117	404	181.833	906	722.113	422	820.391	040						
							98.277	498				98.277	498							

X₂ = 29.138749

面積計算書		工区	ウ	ブロック	2d	計算者		計算者		備考	隣切	
点	①	②	③	④	⑤	⑥	③	×	⑤	②	×	⑥
	X	X-(定数)	X _{n-1} -X _{n+1}	Y	Y-(定数)	Y _{n-1} -Y _{n+1}	+		-	+		-
Ⅱ	⁻¹⁵² 200.692	^{-152, 200} 0.637	- 0.517	⁻³⁷ 194.738	^{-37, 190} 4.738	- 2.955	12.449546			1.867560		
Ⅲ	203.556	3.456	+ 3.441	195.405	4.405	+ 3.622			18.598605			12.879832
Ⅲ	204.073	4.073	- 2.924	198.360	8.360	- 0.667	124.444640			2.716691		
							26.894186		18.598605	4.584251		12.879832
							8.295581					8.295581
									$\frac{1}{2} = 4.147$			

計年
月
算日

計
算
者



檢
查
者



B.NO. 26

各筆面積計算書

地番	算式	隅切	地積	摘要
	青江 835 (1)		528.38	/
	青江 857 (1)		661.56	/
	青江 830		42.99	/
	青江 829, 834, 858		381.47	/
	青江 835 (1)		648.38	/
	青江 856 (1) (1)		106.83	/
	青江 856 (2)		132.79	/
	道 路		22.55	/
	管 理 道		49.13	/
	水 路		217.49	/
	計		2,791.57	/
	全 体		2,791.63	/
		差	0.06	/
	換 地		2,502.40	/
	道 路 (通路)		22.55	/
	管 理 道		49.13	/
	水 路		217.49	/