

BLOCK NO. 28

街区計算

街区略図

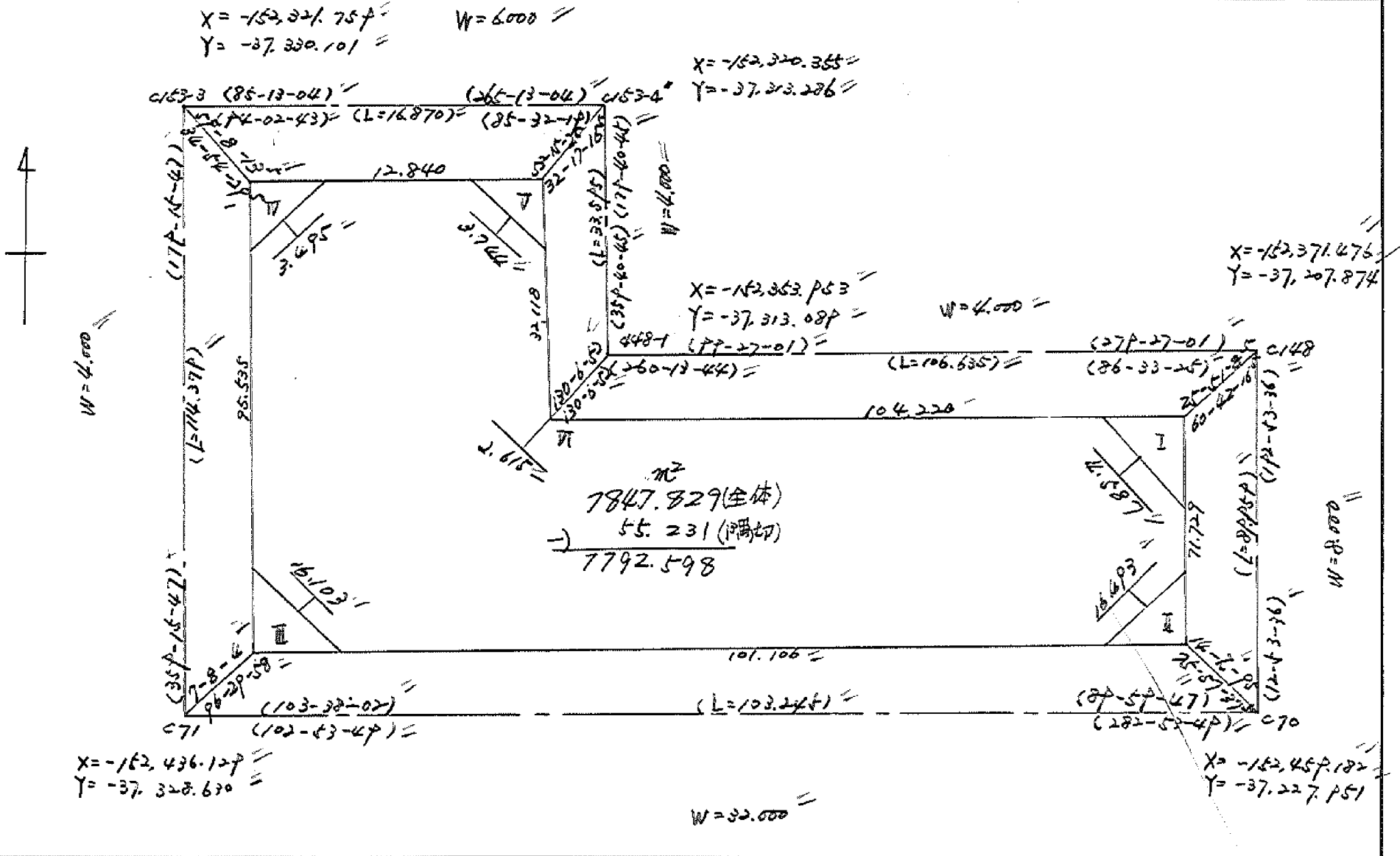
工区

ブロック

28

記入者

点検者



面積計算書

工
区

ウ

ブロック

28

計算者



精算者



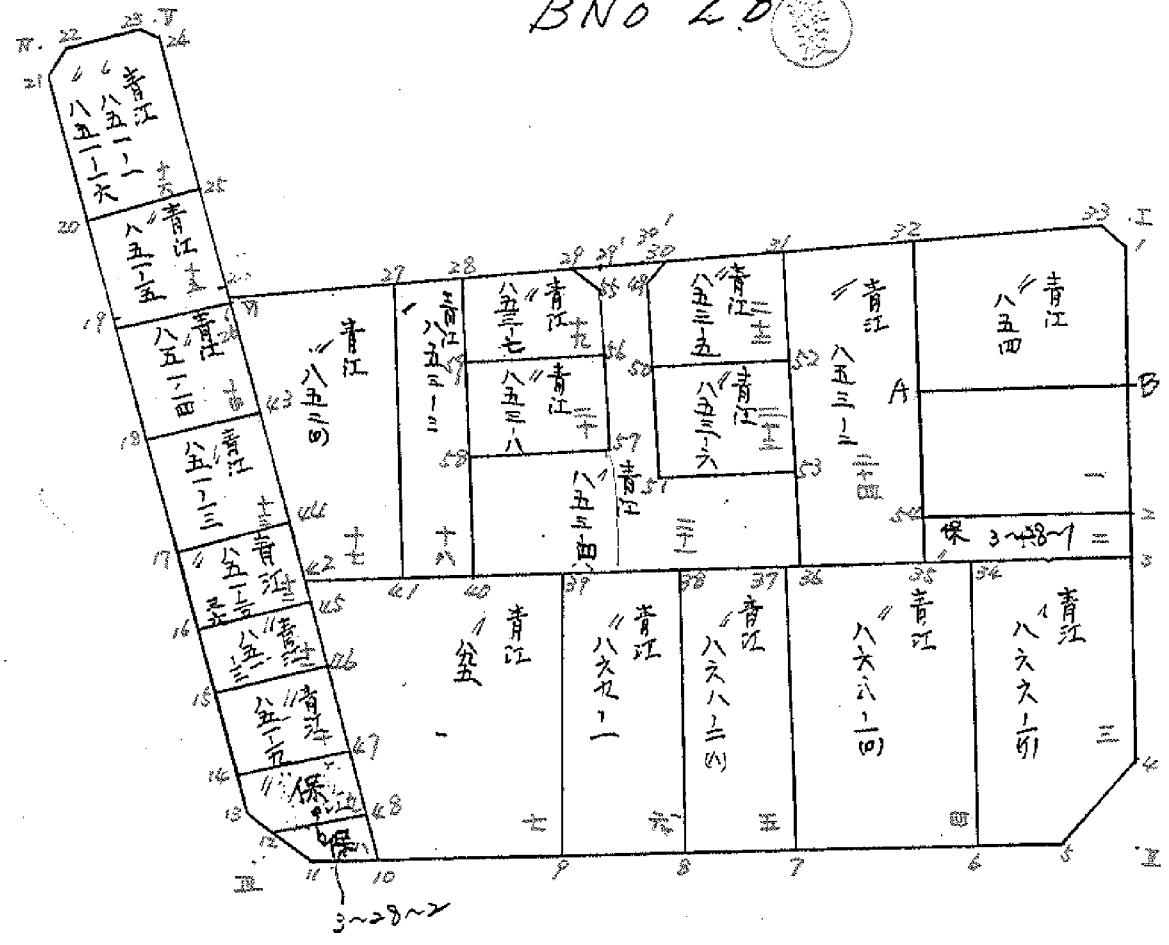
備考

合率

点	①	②	③	④	⑤	⑥	③ × ⑤		② × ⑥	
	X	X - (定数)	X _{n-1} - X _{n+1}	Y	Y - (定数)	Y _{n-1} - Y _{n+1}	+	-	+	-
I	-152,372.771	^{-152,300} 72.771	+ 87.043	-37.212.274	^{-37,200} 12.274	- 86.999		1,068.365782	6,316.450029	
II	-152,442.672	142.677	+ 47.355	-37.228.280	28.280	+ 114.562		1,339.199400		16,347.080904
III	-152,420.126	120.126	- 118.093	-37.326.826	126.836	+ 99.784	14,978.443748			71,986.652784
IV	-152,324.577	24.599	- 96.595	-37.328.064	128.064	- 11.568	12,370.342080			284.561232
V	-152,323.531	23.531	+ 31.050	-37.315.268	115.268	- 12.985		3,579.071400	305.550035	
VI	-152,355.647	55.649	+ 49.240	-37.315.077	115.079	-102.994		5,666.487960	5,713.513106	
							27,348.785828	11,653.126542	12,638.074402	28,333.733688
							15,695.657286			15,695.657286
								$\frac{1}{2} = 7,847.8279643$		
				及び I II III IV V						
				7.847.82 - (2.0 + 38.28 + 10.96 + 2.00 + 1.99) =				$\frac{m^2}{2} = 7.792.59$		

地 地 計 算

BNo 28



枚
15-1

面積計算書						工区	ω	ブロック	28	計算者	精算者	備考
点	①	②	③	④	⑤	⑥	③ × ⑤	② × ⑥				
	X	X-(定数)	X _{n-1} -X _{n+1}	Y	Y-(定数)	Y _{n-1} -Y _{n+1}	+	-				
1	374.720	74.720	+33.444	212.720	12.720	+5.608		425.407680				
2	405.886	105.886	+25.934	219.855	19.855	+29.958		514.919570				
54	400.654	100.654	-36.962	242.678	42.678	+15.517		1577.664236				
32	338.924	68.924	-28.212	235.372	35.372	-28.431		997.914864				
33	372.442	72.442	+5.796	214.247	14.247	-22.652		82.575612				
								2575.379100				
								1222.902862				
								3600.534428				
								5159.010666				
								1552.476238				
								1552.476238				
								Σ = 776.238119				
2	405.886	5.886	+9.912	219.855	19.855	-21.752		196.802760				
3	410.566	10.566	-0.554	220.926	20.926	+23.900		128.032272				
35	405.332	5.332	-9.912	243.755	43.755	+21.752		115.991664				
54	400.654	0.654	+0.554	242.678	42.678	23.900		23.643612				
								15.630600				
								445.292564				
								220.446372				
								143.662872				
								368.509064				
								224.846192				
								Σ = 112.423096				

1. 青江054
2. 未指定地 (保13~28~1)

面積計算書						工区	ブロック	28	計算者	精算者	備考	2青江 866-1(1)	4青江 866-1(2)	
点	①	②	③	④	⑤	⑥	③	×	⑤	②	×	⑥		
	X	X-(定数)	X _{n-1} -X _{n+1}	Y	Y-(定数)	Y _{n-1} -Y _{n+1}	+		-	+		-		
3	⁻¹⁵² 410.566	^{-152.400} 10.566	+ 27.736	⁻³⁷ 220.926	^{-37.200} 20.926	- 12.656			580.403536	132.723296				
4	434.162	34.162	+ 39.173	226.327	26.327	+ 15.893			794.364571			542.596066		
5	440.739	40.739	+ 4.404	236.809	36.809	+ 19.973			162.106836			813.680047		
6	438.566	38.566	- 34.313	246.300	46.300	+ 2.174			1588.691900			83.842486		
34	406.426	6.426	- 28.000	238.983	38.983	- 25.374			1091.526000			163.053324		
									2680.215900			1536.874943	296.776620	1440.117577
									1143.340957					1143.340957
														Y ₂ = 571.6704705
34	⁻¹⁵² 406.426	^{-152.400} 6.426	+ 36.833	⁻³⁷ 238.983	^{-37.200} 38.983	- 13.150			1435.860839	84.501900				
6	438.566	38.566	+ 27.450	246.300	46.300	+ 27.799			1270.935000			1072.096234		
7	433.870	33.870	- 36.833	266.782	66.782	+ 13.150			459.781606			445.669400		
37	401.733	1.733	- 27.450	259.450	59.450	- 27.799			1631.907500			48.175667		
									4091.683906			2706.795839	132.677567	1517.565634
									1384.888067					1384.888067
														Y ₃ = 692.4440335

面積計算書		工区	ウ	ブロック	28	計測者	精算者	備考	5. 青江 868-2 (1)	6. 青江 869-1
点	①	②	③	④	⑤	⑥	③ × ⑤	② × ⑥		
	X	X-(定数)	X _{n-1} -X _{n+1}	Y	Y-(定数)	Y _{n-1} -Y _{n+1}	+	-	+	-
37	⁻¹⁵² 201.733	^{-152.300} 101.733	+ 34.982	⁻³⁷ 269.650	^{-37.200} 19.650	- 5.051			2079.679900	513.853383
7	433.876	133.876	+ 29.307	266.782	66.782	+ 19.719			1957.180076	2637.900804
8	431.040	131.040	- 36.862	279.169	79.169	+ 5.051	2769.687958			661.883080
38	398.894	98.894	- 29.307	271.833	71.833	- 19.719	2105.209731		1950.890786	
							4874.699689	4036.859974	2463.946169	3301.783884
							837839715			837.839715
							$\frac{1}{2} = 1618.9198575$			
38	⁻¹⁵² 398.894	^{-152.300} 98.894	+ 35.052	⁻³⁷ 271.833	^{-37.200} 71.833	- 5.338			2517.890316	527.896172
8	431.040	131.040	+ 29.243	279.169	79.169	+ 20.016			2315.139067	2622.896640
9	428.137	128.137	- 35.052	291.869	91.869	+ 5.338	3219.491148			683.995306
39	395.988	95.988	- 29.243	286.507	86.507	- 20.016	2471.238201		1921.291808	
							5690.729349	4833.029383	449.191989	3206.891946
							857.699966			857.699966
							$\frac{1}{2} = 428.849983$			

面積計算書

工区

3

ブロック

28

計算者



精算者



備考

7.青江8P5

8. ~~不指定地~~ (保) 13~28~2

点	①	②	③	④	⑤	⑥	③ × ⑤		② × ⑥	
	X	X-(定数)	X _{n-1} -X _{n+1}	Y	Y-(定数)	Y _{n-1} -Y _{n+1}	+	-	+	-
29	⁻¹⁵² 295.988	^{-152.300} 95.988	+ 37.091	⁻³⁷ 284.507	^{-37.200} 84.507	- 22.438			3302.463137	2201.772744
9	428.137	128.137	+ 26.965	291.849	91.849	+ 29.984			2476.708285	3842.059808
10	422.953	122.953	- 37.091	314.491	114.491	+ 22.438	4475.567681			2820.295914
42	289.046	89.046	- 26.965	314.787	114.787	- 29.984	3095.231444			2669.957264
							7570.799136	+ 780.171422	4871.728008	6662.355722
							1790.627714			1790.627714
									1/2 = 895.313857	
48	⁻¹⁵² 416.595	^{-152.600} 16.595	+ 6.259	⁻³⁷ 314.546	^{-37.300} 14.546	- 11.341			91.043414	188.203895
10	422.953	22.953	+ 4.591	314.691	14.691	+ 7.560			66.528181	175.819980
11	421.186	21.186	- 6.259	322.206	22.206	+ 11.341	138.987354			240.270426
12	416.694	16.694	- 4.591	325.892	25.892	- 7.660	118.594712			127.876040
							257.582066	+ 157.571595	316.079925	416.070406
							100.010471			100.010471
									1/2 = 50.0052355	
									+ 86.92	
									136.92	

面積計算書

工区

ウ

ブロック

28

計算者



精算者



備考

P.青江251-6
10.青江251-1P

点	①	②	③	④	⑤	⑥	③ × ⑤		② × ⑥		
	X	X-(定数)	X _{n-1} -X _{n+1}	Y	Y-(定数)	Y _{n-1} -Y _{n+1}	+	-	+	-	
	-152	-152.400		-37	-37.300						
47	409.278	9.278	+ 6.765	314.610	14.610	- 12.422		98.836650	115.241316		
48	416.695	16.695	+ 7.416	314.546	14.546	+ 11.222		107.873136		186.229090	
12	416.694	16.694	- 1.219	325.832	25.832	+ 12.351	31.489208			206.187694	
13	415.376	15.376	- 6.864	326.897	26.897	+ 1.126	194.621008			17.457136	
14	409.830	9.830	- 6.098	326.968	26.968	- 12.287	164.450866		120.781210		
			末指定地1合5割					320.561080	206.709786	236.032526	409.883820
								173.851294		173.851294	
									1/2 = 86.925647		
46	399.835	99.835	+ 8.923	314.693	14.693	- 12.480		131.105639	1245.940800		
47	409.278	109.278	+ 9.995	314.610	14.610	+ 12.275		146.026950		1341.387450	
14	409.830	109.830	- 8.923	326.968	26.968	+ 12.480	260.635484			1370.678400	
15	400.355	100.355	- 9.995	327.090	27.090	- 12.275	270.764550		1231.857625		
								511.400014	277.132489	2677.798425	2712.064850
								234.267425		234.267425	
									1/2 = 117.1337125		

(保)3-28-2と合筆

面積計算書		工区	ウ	ブロック	28	計算者	精算者	備考
								11. 青江 851-#2 12. 青江 851-20-36
点	①	②	③	④	⑤	⑥	③ × ⑤	② × ⑥
	X	X-(定数)	X _{n-1} -X _{n+1}	Y	Y-(定数)	Y _{n-1} -Y _{n+1}	+ -	+ -
44	⁻¹⁵² 392.059	^{-152.300} 92.059	⁻³⁷ +7.756	314.761	^{-37.300} 14.761	-12.544	114.486316	1151.105736
46	399.835	99.835	+8.296	314.693	14.693	+12.329	121.893128	1230.865715
15	400.355	100.355	-7.756	327.090	27.090	+12.504	512.110040	1254.938920
16	392.079	92.079	-8.296	327.197	27.197	-12.329	225.626312	1135.241991
							425.726352	236.379444
							199.356908	2286.347727
								2485.704635
								199.356908
								1/2 99.678454
44	⁻¹⁵² 382.702	^{-152.300} 82.702	⁻³⁷ +9.235	314.843	^{-37.300} 14.843	-12.555	137.075105	1038.323610
45	392.059	92.059	+9.377	314.761	14.761	+12.354	138.413897	1137.296886
16	392.079	92.079	-9.235	327.197	27.197	+12.555	251.164295	1156.051845
17	382.824	82.824	-9.377	327.316	27.316	-12.354	256.142132	1023.207696
							507.306427	575.489002
							231.817425	2061.531206
								2293.348731
								231.817425
								1/2 = 115.9087125

分筆後の座標なし

面積計算書						工区	ブロック	計算者	縮尺者	備考
						3	28			13.青江 85-1-13 14.青江 85-1-14
点	①	②	③	④	⑤	⑥	③ × ⑤		② × ⑥	
	X	X-(定数)	X _{n-1} -X _{n+1}	Y	Y-(定数)	Y _{n-1} -Y _{n+1}	+	-	+	-
43	⁻¹⁵² 269.506	^{-152.300} 69.506	+ 13.009	⁻³⁷ 214.958	^{-37.300} 14.958	- 12.641			194.588622	978.625346
44	282.702	82.702	+ 13.318	214.843	14.843	+ 12.358			197.679074	1022.031316
17	282.824	82.824	- 13.009	227.316	27.316	+ 12.641			315.352844	1046.978184
18	269.693	69.693	- 13.318	227.484	27.484	- 12.358			366.031912	961.266096
									721.398766	372267696
									1739.891440	2069.00950
									329.118060	329.118060
									$\frac{1}{2} = 164.559030$	
25	⁻¹⁵² 256.258	^{-152.300} 56.258	+ 12.786	⁻³⁷ 215.074	^{-37.300} 15.074	- 12.696			195.720816	714.251568
43	269.506	69.506	+ 13.435	214.958	14.958	+ 12.410			200.960730	862.569460
18	269.693	69.693	- 12.786	227.484	27.484	+ 12.696			356.852256	884.922328
19	256.522	56.522	- 13.435	227.654	27.654	- 12.410			371.531490	101.438020
									728.383746	396.691546
									1415.689588	1747.391788
									331.702200	331.702200
									$\frac{1}{2} = 165.851100$	

面積計算書		工区	ウ	ブロック	28	計測者	精算者	備考
								15.青江 251-15 16.青江 251-16
点	①	②	③	④	⑤	⑥	③ × ⑤	② × ⑥
	X	X-(定数)	X _{n-1} -X _{n+1}	Y	Y-(定数)	Y _{n-1} -Y _{n+1}	+	-
25	344.320	44.320	+ 11.670	315.145	15.145	- 12.733		1176.742180
26	356.258	56.258	+ 12.202	315.076	15.074	+ 12.509		483.932948
19	356.522	56.522	- 11.670	327.654	27.654	+ 12.733	322.722180	719.694626
20	344.588	44.588	- 12.202	327.807	27.807	- 12.509	339.301012	657.751292
							1662.023194	360.675088
							301.348086	1123.077842
								1423.425968
								301.348086
								1/2 = 150.674048
24	325.531	25.531	+ 20.623	315.256	15.256	- 2.117		314.626488
25	344.320	44.320	+ 19.057	315.145	15.145	+ 12.551		54.049127
20	344.588	44.588	- 17.721	327.807	27.807	+ 12.873	492.757847	288.618265
21	326.599	26.599	- 20.155	328.038	28.038	- 1.736	565.105890	574.873084
22	324.433	24.433	- 2.902	326.071	26.071	- 10.776	75.658042	46.175866
23	323.697	23.697	+ 1.098	317.262	17.262	- 10.815	18.953676	263.290008
							1133.531779	62.796429
							511.325350	619.792054
								1131.133404
								511.325350
								1/2 = 255.667675

分筆後の座標なし

面積計算書		工区	ル	ブロック	28	計量者	縮尺者	備考
								17. 青江 852 (10) 18. 青江 853-3
点	①	②	③	④	⑤	⑥	③ × ⑤	② × ⑥
	X	X-(定数)	X _{n-1} -X _{n+1}	Y	Y-(定数)	Y _{n-1} -Y _{n+1}	+ -	+ -
27	-152 258.977	-152.300 58.977	+36.185	-37 295.097	-37.200 95.097	-12.453		3441.084945734.440581
41	291.836	91.836	+30.069	202.626	102.626	+19.690		3085.861194 1808.211460
42	289.046	89.046	-36.185	216.787	114.787	+12.453		4153.567595 1108.889838
71	255.669	55.669	-30.069	215.079	115.079	-19.690		3460.310451 1095.728810
								7613.8780466526.946139 1830.169397.2917.101298
								1086.931907 1086.931907
								1/2 = 543.4659535
28	-152 360.550	-152.300 60.550	+34.991	-37 295.656	-37.200 85.656	-1.778		2997.119114107.657900
40	293.968	93.968	+31.284	293.319	93.319	+16.972		2919.391596 1594.824898
41	291.836	91.836	-34.991	202.626	102.626	+1.778		3590.986366 163.280852
27	258.977	58.977	-31.284	295.097	95.097	-16.972		2975.014548 1000.957644
								6566.0009145916.510710 1108.6155441758.105748
								649.490204 649.490204
								1/2 = 324.745102

面積計算書		工区	ブロック	28	計算者	精算者	備考	19.青江253-7		20.青253-8	
点	①	②	③	④	⑤	⑥	③ × ⑤	② × ⑥			
	X	X-(定数)	X _{n-1} -X _{n+1}	Y	Y-(定数)	Y _{n-1} -Y _{n+1}	+ -	+ -	+ -	+ -	
55	-152 265.279	-152.300 65.279	+7.199 268.409	-37 269.409	-37.200 69.409	+0.061			638.693391	3982.019	
56	272.200	72.200	+4.134 270.996	-37 270.996	70.996	+18.278			293.697466	1319.671600	
59	269.413	69.413	-11.650 287.687	-37 287.687	87.687	+14.658			1021.533550	1012.455756	
28	360.550	60.550	-6.417 285.654	-37 285.654	85.654	-16.752			549.213448	1014.333600	
29	363.001	63.001	+4.729 270.935	-37 270.935	70.935	-16.245			335.451615	1023.451241	
									1570.766999	1267.442470	
									2037.784245	2341.109373	
									303.324528	303.324528	
									変更後の資料なし		
									1/2 = 151.662264		
56	-152 372.200	-152.300 72.200	+12.923 270.996	-37 270.996	-37.200 70.996	-14.366			917.481308	1037.225200	
57	382.336	82.336	+6.319 273.321	-37 273.321	73.321	+18.780			463.315399	1546.270880	
58	378.519	78.519	-12.923 289.776	-37 289.776	89.776	+14.366			1160.174288	1128.003956	
59	369.413	69.413	-6.319 287.687	-37 287.687	87.687	-18.780			556.096153	1003.576140	
									1714.269401	1080.796707	
									2240.801340	2674.274034	
									333.472694	333.472694	
									変更後の資料なし		
									1/2 = 166.736347		

面積計算書

工区

3

ブロック

28

計測者



縮算者



備考

青江 253-4

点	①	②	③	④	⑤	⑥	③ × ⑤		② × ⑥	
	X	X-(定数)	X _{n-1} -X _{n+1}	Y	Y-(定数)	Y _{n-1} -Y _{n+1}	+	-	+	-
30	264.316	64.316	+2.936	263.038	63.038	-5.477	185.079	569	352.253	732
49	265.937	65.937	+23.094	265.658	65.658	+7.345	151.687	0.52	484.307	265
51	287.410	87.410	+24.714	270.383	70.383	-9.686	1739.445	462	846.653	260
53	290.651	90.651	+14.569	255.772	55.772	-12.006	312.542	268	1088.355	906
36	401.979	101.979	+3.317	258.377	58.377	+37.547	193.636	509	3829.005	513
40	293.968	93.968	-23.460	292.319	92.319	+31.399	2189.263	740	2950.591	32
58	278.519	78.519	-11.632	289.776	89.776	-19.998	1044.274	432	1570.222	962
57	282.336	82.336	-13.240	273.321	73.321	-20.367	970.770	040	1676.937	312
65	265.279	65.279	-19.335	269.409	69.409	-2.386	1342.023	015	155.755	696
29	263.001	63.001	-0.963	270.935	70.935	-6.371	68.310	405	401.379	371
							5614.641	632	4442.390	859
							1172.250	773	6091.563	227
									7213.814	010
									1172.250	773
									1/2 = 586.125	386.5

変更後の資料なし

面積計算書											工区	期	ブロック	28	計算者	精算者	備考	22. 青江 853-5	23. 青江 853-6
点	①	②	③	④	⑤	⑥	③ × ⑤		② × ⑥										
	X	X-(定数)	X _{n-1} -X _{n+1}	Y	Y-(定数)	Y _{n-1} -Y _{n+1}	+	-	+	-									
51	⁻¹⁵² 266.453	^{-152.300} 66.453	+13.442	⁻³⁷ 260.207	^{-37.200} 50.207	-10.231			674.882494	679.880643									
52	277.758	77.758	+8.067	252.807	52.807	+17.218			425.730034	1338.937264									
50	274.515	74.515	-11.821	267.425	67.425	+12.651			797.030925	942.689265									
49	265.937	65.937	-10.199	265.458	65.458	-4.387			667.606142	289.265619									
30	264.316	64.316	+0.516	263.038	63.038	-15.251			32.527608	980.893316									
変更後の資料なし									1464.637067	1132.140136	1950.029578	2281.526509							
変更後の資料なし									331.496931		331.496931								
変更後の資料なし									1/2 = 165.748465										
52	⁻¹⁵² 277.758	^{-152.300} 77.758	+16.136	⁻³⁷ 252.807	^{-37.200} 52.807	-11.653			852.093752	906.112974									
53	290.651	90.651	+9.652	285.772	55.772	+17.576			538.311344	1593.281976									
51	287.410	87.410	-16.136	270.383	70.383	+11.653			1133.700088	1018.588730									
50	274.515	74.515	-9.652	267.425	67.425	-17.576			650.786100	1309.675640									
変更後の資料なし									1786.486188	1390.405096	2215.789614	2611.870706							
変更後の資料なし									396.081092		396.081092								
変更後の資料なし									1/2 = 198.040546										

面積計算書

工
区

3

ブ
ロ
ック

28

計
算
者



精
算
者



備
考

24 青江 853-2

点	①	②	③	④	⑤	⑥	③ × ⑤		② × ⑥	
	X	X-(定数)	X _{n-1} -X _{n+1}	Y	Y-(定数)	Y _{n-1} -Y _{n+1}	+	-	+	-
32	⁻¹⁵² 368.924	^{-152.300} 68.924	+38.879	⁻³⁷ 235.372	^{-37.200} 35.372	-6.452	1375.227988		444.697648	
35	405.332	105.332	+33.055	243.755	43.755	+23.005	1466.321525			2623.162660
36	401.979	101.979	-38.879	258.377	58.377	+6.452	2269.639383			657.968508
31	366.453	66.453	-33.055	250.207	50.207	-23.005	1659.592385		1528.781265	
							3927.231768	2821.549513	1923.448913	3081.131168
							1107.682255			1107.682255
										$\frac{1}{2} = 553.841275$

面積計算書						工区	ブロック	28	計算者	精算者	備考
点	①	②	③	④	⑤	⑥	③ × ⑤	② × ⑥			
	X	X-(定数)	X _{n-1} -X _{n+1}	Y	Y-(定数)	Y _{n-1} -Y _{n+1}	+	-			
I	372.771	2.771	+2.278	212.274	-37.210	-1.527		5.180172			
1	376.720	4.720	-0.329	212.720	2.720	+1.773	0.896880	9.312560			
2	372.442	2.442	-1.749	214.247	4.247	-0.446	8.277403	1.089132			
							9.172283	5.180172			
							3.992111	5.320449			
								9.312560			
								3.992111			
								1/2 = 1.996055			
4	426.162	4.162	+1.953	226.327	-37.220	-8.529		12.356631			
II	442.692	12.692	+6.577	228.280	8.280	+10.482		35.497698			
5	440.739	10.739	-8.530	236.809	16.809	-1.953	143.380770	54.467560			
							143.380770	20.973267			
							76.566579	66.814191			
								56.270965			
								133.037546			
								26.566579			
								1/2 = 38.283289			

面積計算書

工区

3

ブロック

28

計算者



補算者



備考

隅切 III IV V

III

IV

V

点	①	②	③	④	⑤	⑥	③ × ⑤		② × ⑥	
	X	X-(定数)	X _{n-1} -X _{n+1}	Y	Y-(定数)	Y _{n-1} -Y _{n+1}	+	-	+	-
III	420.126	20.126	-6.810	326.836	26.836	+4.691	155.917160			94.611066
13	415.376	15.376	+1.060	326.897	26.897	-4.630		28.510820	71.190880	
11	421.186	21.186	+4.750	322.206	22.206	-0.061		105.478500	1.292346	
							155.917160	133.989320	72.483226	94.611066
							21.927840			21.927840
							× 1/2 = 10.963920			
21	326.599	26.599	+0.166	328.038	28.038	+1.993		4.654308		53.011807
20	326.599	26.599	-2.166	328.064	28.064	-1.967	60.786624		48.386233	
22	326.433	24.433	+2.000	326.071	26.071	-0.026		52.142000	0.635258	
							60.786624	56.776308	49.021497	53.011807
							3.990316			3.990316
							× 1/2 = 1.995158			
23	317.262	17.262	-2.000	317.262	17.262	+0.012	34.524000			0.284364
V	315.268	15.268	+1.834	315.268	15.268	-2.006		28.001512	47.203186	
24	315.256	15.256	+0.166	315.256	15.256	+1.994		2.532496		50.908814
							34.524000	30.534008	47.203186	51.193178
							3.989992			3.989992
							× 1/2 = 1.994996			

計年月日

計算者



検査者



B. NO. 28

各筆面積計算書

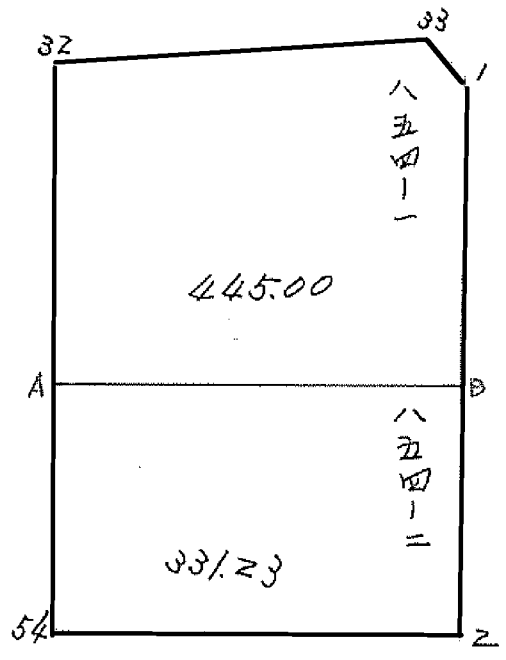
2枚-1

地番	算式	隅切	地積	摘要
	青江 854		776.23	
	未指定地(俣) 3-28-1		112.42	
	青江 866の1(1)		571.67	
	青江 868の1(1)		692.44	
	青江 868の2(1)		418.91	
	青江 869の1		428.84	
	青江 895		895.31	
	未指定地(俣) 3-28-2		136.92	
	青江 851の19		117.13	
	青江 851の12		99.67	
	青江 851の20, 851の36		115.90	
	青江 851の13		164.55	
	青江 851の14		165.85	
	青江 851の15		150.67	
	青江 851の1, 851の16		255.66	
	青江 852(1)		543.46	
	青江 853の3		324.74	
	青江 853の7		151.66	
	青江 853の8		166.73	
	青江 853の4		586.12	
	青江 853の5		165.74	
	青江 853の6		198.04	
	青江 853の2(1)		553.84	
	計		7,792.50	

全体

7,792.59

差 -0.09



面積計算書

工区

3

ブロック

28

計算者

精算者

備考

青 854n1

点	①	②	③	④	⑤	⑥	③ × ⑤		② × ⑥	
	X	X - (定数)	X _{n-1} - X _n	Y	Y - (定数)	Y _{n-1} - Y _n	+	-	+	-
32	152 368.924	152-360 8.924	14.422 - 7.940	37 225.372	37.210 25.372					365.914984
33	372.442	12-442	+ 5.796	214.247	4.247		24-615612			
1	374.720	14.720	+ 19.649	212.720	2.720		53-445280			
B	392.091	32-091	+ 12.144	216.696	6.696		81-316224			
A	386.864	26-864	- 23.167	229.502	29.502					683.472874
							159.377116			1039.387818
										890.010702
							1/2 = 445.00			

