

**BLOCK NO. 29**

**街 区 計 算**

街区略図

工区

3

ブロック

29

記入者



点検者



$$X = -152.328.772 =$$

$$Y = -37.370.640 =$$

$$W = 6.000 =$$

$$X = -152.325.605 =$$

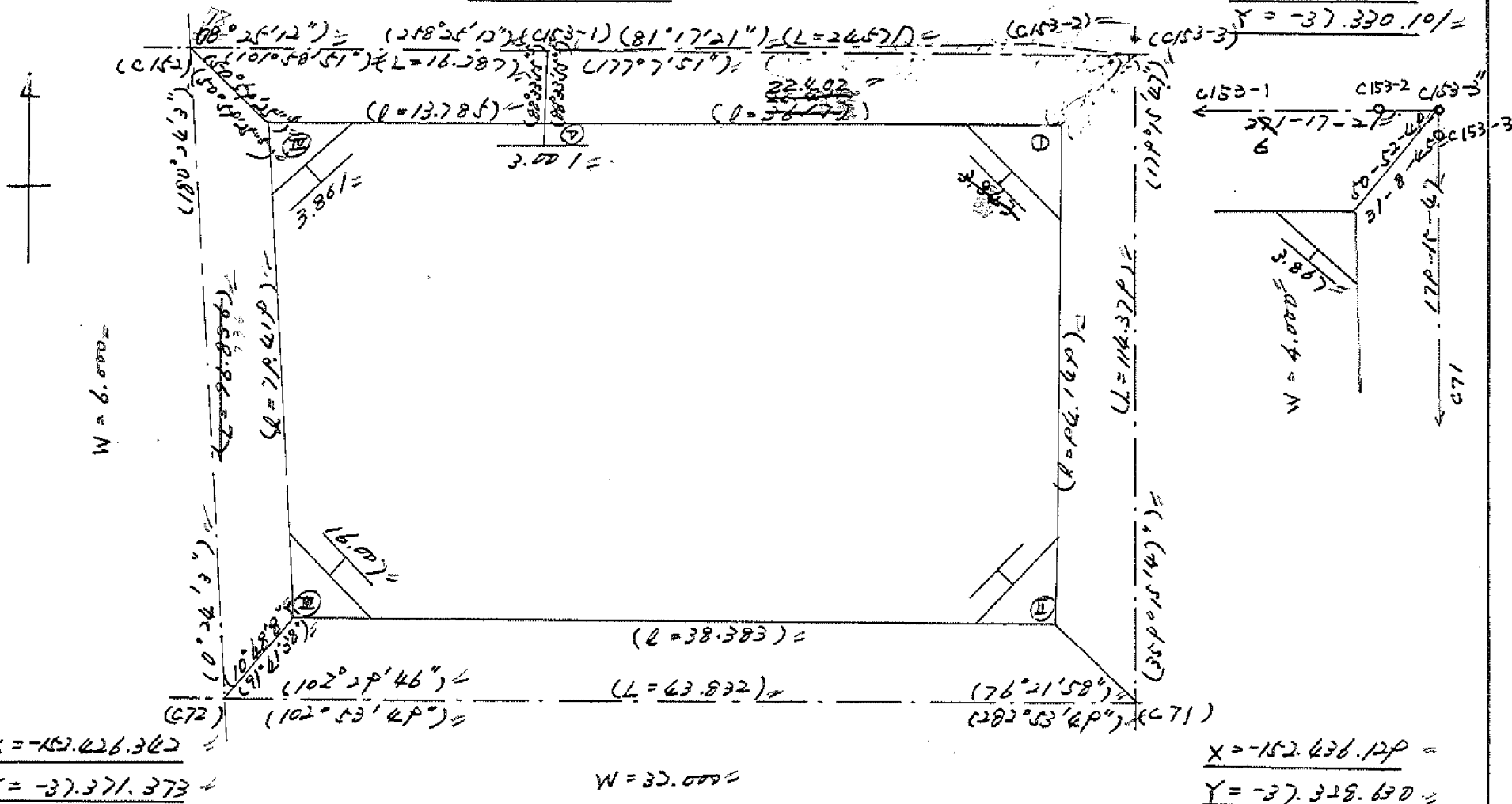
$$Y = -37.354.731 =$$

$$X = -152.321.787 =$$

$$Y = -37.330.637 =$$

$$X = -152.321.759 =$$

$$Y = -37.330.101 =$$



# 面積計算書

工区

J

ブロック

29

計算者

印

精算者

難波

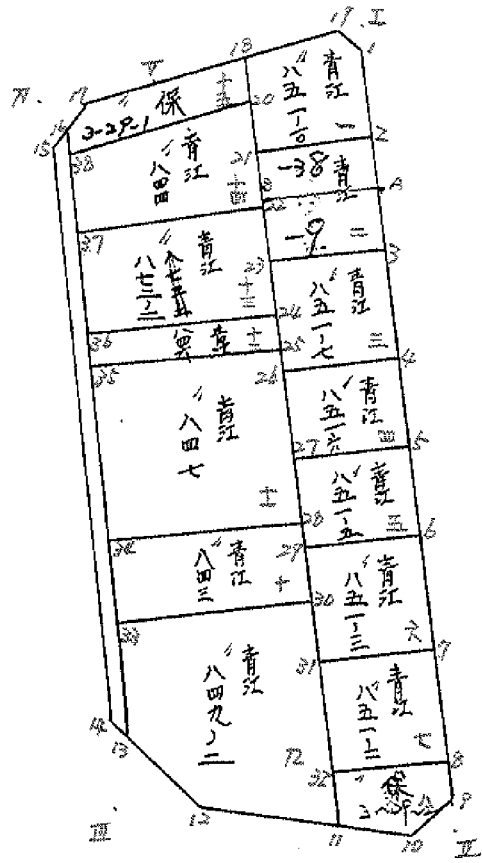
備考

全体

点	①	②	③	④	⑤	⑥	③ × ⑤		② × ⑥	
	X	X-(定数)	X <sub>n-1</sub> -X <sub>n+1</sub>	Y	Y-(定数)	Y <sub>n-1</sub> -Y <sub>n+1</sub>	+	-	+	-
I	-152.325.066	<sup>-152.300</sup> 25.066	+ 90.768	-37.332.058	<sup>-37.300</sup> 22.058	-23.356			2909.199384	585.391364
II	-152.419.207	119.207	+ 25.574	-37.330.868	20.868	+ 36.205			2639.786752	4215.889435
III	-152.410.660	110.660	- 87.986	-37.368.263	68.263	+ 36.859	6006.051772			4078.079764
IV	-152.331.223	21.223	- 82.181	-37.367.707	67.707	- 16.061	6566.228967			439.026603
V	-152.328.679	28.679	- 6.157	-37.356.202	66.202	- 35.649	333.721714			1014.534891
							11904.0024735540	986136.2038	952858	8393.969195
							6355.016337			6355.016337
										1/2 = 3177.5081685
										統計 I II III IV m <sup>2</sup>
										3.177.50 - (1.98 + 10.96 + 37.38 + 4.40) = 3.122.78

# 圖地計算

BNo 29



面積計算書

工区 3

ブロック 29

計算者



精算者



備考

1 青浜 851-10  
2 青浜 851-9

点	①	②	③	④	⑤	⑥	③ × ⑤	② × ⑥
	X	X-(定数)	X <sub>n-1</sub> -X <sub>n+1</sub>	Y	Y-(定数)	Y <sub>n-1</sub> -Y <sub>n+1</sub>	+ -	+ -
1	-152. 327.066	-152.300 27.066	+12.805	-37. 332.032	-37.300 32.032	-2.145	410.169760	58.056570
2	338.174	38.174	+11.241	331.890	31.890	+12.655	358.475490	483.091970
21	338.307	38.307	-11.150	344.687	44.687	+12.947	498.260050	495.960729
18	327.024	27.024	-12.938	344.837	44.837	-10.652	580.101106	287.859648
19	325.369	25.369	+0.042	334.035	34.035	-12.805	1.429470	324.850045
							1078.361156	770.074720
							570.766263	979.052699
							308.286436	308.286436
							1/2 = 154.143218	
2	-152 338.174	-152.300 38.174	+12.706	-37. 331.890	-37.300 31.890	-12.963	405.194340	494.849562
3	351.013	51.013	+12.846	331.724	31.724	+12.629	407.626504	644.243177
23	351.020	51.020	-12.706	344.519	44.519	+12.963	565.658414	661.372260
21	338.307	38.307	-12.846	344.687	44.687	-12.629	574.049202	483.779103
							1139.707616	812.720844
							978.628665	1305.615937
							326.986772	326.986772
							1/2 = 163.493386	

面積計算書		工区	ブロック	計算者	精算者	備考	3. 青江 851-7		4. 青江 851-6	
点	①	②	③	④	⑤	⑥	③ × ⑤	② × ⑥		
	X	X-(定数)	X <sub>n-1</sub> -X <sub>n+1</sub>	Y	Y-(定数)	Y <sub>n-1</sub> -Y <sub>n+1</sub>	+	-	+	-
23	251.013	-152.300 51.013	+12.753	231.726	-37.300 31.724	-12.959			404.576172	661.077467
24	263.773	63.773	+12.921	231.560	31.560	+12.624			407.786760	805.070352
25	263.934	63.934	-12.753	244.348	44.348	+12.959	565.570044			828.520706
26	251.020	51.020	-12.921	246.519	44.519	-12.624	575.229999			644.076480
							1140.800043		812.362932	1305.153947
							328.437111			328.437111
							1/2 = 164.218555			
27	274.029	-152.300 63.773	+10.095	231.560	-37.300 31.560	-12.919			318.598200	823.883387
28	274.029	74.029	+10.466	231.429	31.429	+12.651			328.935914	936.540879
29	274.239	74.239	-10.095	244.211	44.211	+12.919	446.310045			959.093644
30	263.934	63.934	-10.466	244.348	44.348	-12.651	464.146168			808.829034
							910.456213		647.534114	1632.712421
							262.922099			262.922099
							1/2 = 131.4610495			

面積計算書		工区	ブロック	29	計算者	精算者	備考	5. 青江851-5 6. 青江851-3		
点	①	②	③	④	⑤	⑥	③ × ⑤	② × ⑥		
	X	X-(定数)	X <sub>n-1</sub> -X <sub>n+1</sub>	Y	Y-(定数)	Y <sub>n-1</sub> -Y <sub>n+1</sub>	+	-	+	-
5	<sup>-152</sup> 374.029	<sup>-152.300</sup> 74.029	+10.189	<sup>-37</sup> 331.429	<sup>-37.300</sup> 31.429	-12.916			320.230081	956.158564
6	384.428	84.428	+10.523	331.295	31.295	+12.645			329.317285	1067.592060
29	384.552	84.552	-10.189	344.074	44.074	+12.916	449.069986			1092.073632
27	374.239	74.239	-10.523	344.211	44.211	-12.645	465.232353		938.752155	
									914.302339	649.547366
									1894.910719	2159.665692
									264.754973	264.754973
									1/2 = 132.3774865	
6	<sup>-152</sup> 384.428	<sup>-152.300</sup> 84.428	+12.671	<sup>-37</sup> 331.295	<sup>-37.300</sup> 31.295	-12.944			396.538945	1092.836032
7	397.223	97.223	+12.937	331.130	31.130	+12.610			402.728910	1225.982030
81	397.365	97.365	-12.671	343.905	43.905	+12.944	556.320255			1260.292560
29	384.552	84.552	-12.937	344.074	44.074	-12.610	570.185338		1066.200720	
									1126.505593	99.267735
									2159.036752	2489.274590
									327.237838	327.237838
									1/2 = 163.618919	



面積計算書		工区	ブロック	29	計算者	精算者	備考	
							7. 青江851-2 8. 赤福定規 係 3-29-2	
点	① X	② X-(定数)	③ X <sub>n-1</sub> -X <sub>n+1</sub>	④ Y	⑤ Y-(定数)	⑥ Y <sub>n-1</sub> -Y <sub>n+1</sub>	③ × ⑤ + -	② × ⑥ + -
7	<sup>-152</sup> 397.223	<sup>-152.300</sup> 97.223	+12.620	<sup>-37</sup> 331.130	<sup>-37.300</sup> 31.130	-12.939	392.860600	1257.968397
8	409.985	109.985	+13.332	330.966	30.966	+12.600	412.838712	1385.811009
32	410.555	110.555	-12.620	343.730	43.730	+12.939	551.872600	1430.471145
31	397.365	97.365	-13.332	343.905	43.905	-12.600	585.341460	1226.799000
							1137.214060	805.699312
							331.514748	331.514748
							1/2 = 165.757374	
8	<sup>-152</sup> 409.985	<sup>-152.400</sup> 9.985	+3.903	<sup>-37</sup> 330.966	<sup>-37.300</sup> 30.966	-12.821	120.860298	128.017685
9	44.458	14.458	+8.162	330.909	30.909	+4.512	252.279258	65.234496
10	418.147	18.147	+1.817	335.478	35.478	+12.745	64.463526	231.283515
11	416.275	16.275	-7.592	343.654	43.654	+8.252	331.421168	134.301300
32	410.555	10.555	-6.290	343.730	43.730	-12.688	275.061700	133.921840
							606.482869	437.603082
							261.939525	430.819311
							168.879786	168.879786
							1/2 = 84.439893	

面積計算書		工区	ウ	ブロック	29	計算者	精算者	備考	9.青工 84Pの2	10.青工 843
点	①	②	③	④	⑤	⑥	③ × ⑤	② × ⑥		
	X	X-(定数)	X <sub>n-1</sub> -X <sub>n+1</sub>	Y	Y-(定数)	Y <sub>n-1</sub> -Y <sub>n+1</sub>	+	-	+	-
20	-152. 290.949	-152.300 90.949	+25.495	-37 243.990	-37.300 43.990	-22.972			1121.525050	2089.280428
11	416.275	116.275	+21.644	243.654	43.654	+15.743			944.847176	1830.517325
12	412.593	112.593	-12.509	259.733	59.733	+23.063			747.200097	2596.732359
13	403.766	103.766	-21.813	266.717	66.717	+6.893			1455.297922	715.259038
22	290.780	90.780	-12.817	266.626	66.626	-22.727			853.945442	2063.157060
									3056.443460	2066.372226
									790.071234	990.071234
									1/2=495.035617	
28	-152. 281.847	152.300 81.847	+9.263	-37.00 244.110	-37.300 44.110	-22.572			408.590930	1847.450484
30	290.949	90.949	+8.933	243.990	43.990	+22.516			392.962670	2047.807684
33	290.780	90.780	-9.263	266.626	66.626	+22.572			617.156638	2049.086160
34	281.686	81.686	-8.933	266.562	66.562	-22.516			594.598346	1839.241976
									1211.754984	801.553600
									3686.672460	4096.893844
									410.201384	410.201384
									1/2=205.100692	

面積計算書		工区	ブロック	29	計算者	精算者	備考	11.青江 847	12.青江 846
点	①	②	③	④	⑤	⑥	③ × ⑤	② × ⑥	
	X	X-(定数)	X <sub>n-1</sub> -X <sub>n+1</sub>	Y	Y-(定数)	Y <sub>n-1</sub> -Y <sub>n+1</sub>	+ -	+ -	
25	<sup>-152</sup> 362.244	<sup>-152.300</sup> 62.244	+19.752	<sup>-37</sup> 344.370	<sup>-37.300</sup> 44.370	-22.314		876.396240-1388.912616-	
28	381.847	81.847	+19.442	344.110	44.110	+22.192		857.586620- 1816.348624-	
24	381.686	81.686	-19.752	366.562	66.562	+22.314	1314.732624-	1822.741404-	
25	362.095	62.095	-19.442	366.424	66.424	-22.192	1291.415468-	1378.012240-	
							2866.148032+733.982860-2766.924856-3639.090028-		
							872.165172-	872.165172-	
							1/2=436.082586-		
24	<sup>-152</sup> 357.642	<sup>-152.300</sup> 57.642	+4.747	<sup>-37</sup> 346.431	<sup>-37.300</sup> 44.431	-22.022		210.913957-1269.392124-	
25	362.244	62.244	+4.453	344.370	44.370	+21.993		197.579610- 1368.932292-	
25	362.095	62.095	-4.747	366.424	66.424	+22.022	315.314728-	1367.456090-	
26	357.497	57.497	-4.453	366.392	66.392	-21.993	295.643576-	1264.531521-	
							610.958364-408.493567-2533.923645-2736.388382-		
							202.464737-	202.464737-	
							1/2=101.2323685-		

面積計算書		工区	ブロック	計算者	精算者	備考	青丘 246 " 8722	
点	①	②	③	④	⑤	⑥	③ × ⑤	② × ⑥
	X	X-(定数)	X <sub>n-1</sub> -X <sub>n+1</sub>	Y	Y-(定数)	Y <sub>n-1</sub> -Y <sub>n+1</sub>	+ -	+ -
38	-152,325.811	<sup>-152,300</sup> 35.811	-12.425	-37,366.240	<sup>-37,300</sup> 66.240	-21.55	822.35680	771.762861
20	-152,333.025	33.025	+8.818	-37,344.757	24.757	-21.637	394.667226	714.778295
22	-152,344.629	44.629	+12.425	-37,344.603	24.603	+21.55	555.084395	961.799579
37	-152,345.980	45.980	-8.818	-37,366.308	66.308	+21.637	594.703944	924.050761
							1,429,060744	1,426,541156
							459,209123	459,309123
							1/2 = 229,6545915	
37	-152,345.480	<sup>-152,300</sup> 45.480	-12.868	-37,366.308	<sup>-37,300</sup> 66.308	-21.789	853.25344	990.963720
22	-152,344.629	44.629	+12.162	-37,344.603	24.603	-21.877	542.461686	976.248633
24	-152,357.642	57.642	+12.868	-37,344.431	24.431	+21.789	571.738108	1,255,961538
26	-152,357.497	57.497	-12.162	-37,366.392	66.392	+21.877	807.459504	1,257,861069
							1,667,10048	1,114,199794
							546,511054	546,511054
							1/2 = 273,255527	

10-8

面積計算書						工区	ブロック	計算者	精算者	備考
						3	29			15. 探留地 3-29-1 水路
点	①	②	③	④	⑤	⑥	③ × ⑤		② × ⑥	
	X	X-(定数)	X <sub>n-1</sub> -X <sub>n+1</sub>	Y	Y-(定数)	Y <sub>n-1</sub> -Y <sub>n+1</sub>	+	-	+	-
18	<sup>-152</sup> 227.024	<sup>-152.300</sup> 27.024	+ 4.576	<sup>-27</sup> 244.837	<sup>-37.300</sup> 44.837	- 9.445			205.174112	255.24680
20	223.035	33.035	+ 8.797	244.757	46.757	+ 21.403			393.279759	707.048105
28	225.811	35.811	- 0.652	266.260	66.260	+ 21.459			43.188480	768.468249
16	222.383	32.383	- 5.190	266.216	66.216	- 1.472			343.661040	47.667776
17	220.621	30.621	- 3.924	266.768	66.768	- 12.014			254.149632	367.880694
V	228.459	28.459	- 3.597	254.202	54.202	- 19.931			194.964594	567.216329
									835.963746	598.453817
									237.509929	237.509875
									1/2 = 118.7549645	
16	<sup>-152</sup> 222.383	<sup>-152.300</sup> 32.383	+ 69.543	<sup>-27</sup> 266.216	<sup>-37.300</sup> 6.216	- 1.011			432.279288	32.739213
13	203.765	103.766	+ 69.507	266.717	6.717	+ 1.986			466.878519	206.079276
14	201.890	101.890	- 69.543	268.202	8.202	+ 1.011			570.391686	103.010790
15	204.223	04.223	- 69.507	267.728	7.728	- 1.986			537.150096	67.966878
									1107.541782	899.157807
									208.383975	208.383975
									1/2 = 104.1919875	

面積計算書		工区	ブロック	計算者	精算者	備考	隔切工. II			
点	①	②	③	④	⑤	⑥	③ × ⑤	② × ⑥	③ × ⑤	② × ⑥
	X	X-(定数)	X <sub>n-1</sub> -X <sub>n+1</sub>	Y	Y-(定数)	Y <sub>n-1</sub> -Y <sub>n+1</sub>	+	-	+	-
I	<sup>-152</sup> 325.066	<sup>-152.325</sup> 0.066	+ 1.697	<sup>-37</sup> 332.058	<sup>-37.332</sup> 0.058	- 2.002		0.098426	- 0.132132	
1	327.066	- 2.066	+ 0.303	332.032	0.032	+ 1.976		0.009696		4.082416
19	325.369	0.369	- 2.000	334.035	2.034	+ 0.026	4.068000			0.009594
							4.068000	0.108122	- 0.132132	4.092010
							3.959878			3.959878
							1/2 = 1.979939			
9	<sup>-152</sup> 414.458	<sup>-152.400</sup> 14.458	+ 1.060	<sup>-37</sup> 330.909	<sup>-37.330</sup> 0.909	- 4.630		0.963540	- 66.940540	
II	419.207	- 19.207	+ 3.689	330.849	0.849	+ 4.569		3.128272		87.756783
10	418.147	18.147	- 4.749	335.478	5.478	+ 0.061	26.015022			1.106967
							26.015022	4.091912	- 66.940540	88.863750
							21.923210			21.923210
							1/2 = 10.961605			

面積計算書		工区	ブロック	計算者	精算者	備考	隅切Ⅲ,Ⅳ	
点	①	②	③	④	⑤	⑥	③ × ⑤	② × ⑥
	X	X-(定数)	X <sub>n-1</sub> -X <sub>n+1</sub>	Y	Y-(定数)	Y <sub>n-1</sub> -Y <sub>n+1</sub>	+ -	+ -
12	<sup>-152</sup> 412.593	<sup>-152.400</sup> 12.599	+ 8.750	<sup>-37</sup> 359.733	<sup>-37.300</sup> 59.733	+ 0.061	522.663752	0.768173
Ⅲ	410.640	10.640	- 10.703	368.263	68.263	+ 8.469	730.618889	90.110160
14	401.890	1.890	+ 1.953	368.202	68.202	- 8.530	133.198506	16.121700
							730.618889	655.862256
							74.756633	16.121700
								90.878333
								74.756633
							1/2 = 37.3783165	
15	<sup>-152.330</sup> 334.223	<sup>-152.330</sup> 4.223	+ 0.602	<sup>-37.360</sup> 367.728	<sup>-37.360</sup> 7.728	+ 2.939	4.652256	12.411397
Ⅳ	331.223	1.223	- 3.602	367.707	7.707	- 2.960	27.760614	3.620080
17	330.621	0.621	+ 3.000	364.768	4.768	+ 0.021	14.304000	0.013041
							27.760614	18.956256
								3.620080
								12.424438
							8.804358	8.804358
							1/2 = 4.402179	

計年月  
算日

計算者



検査者

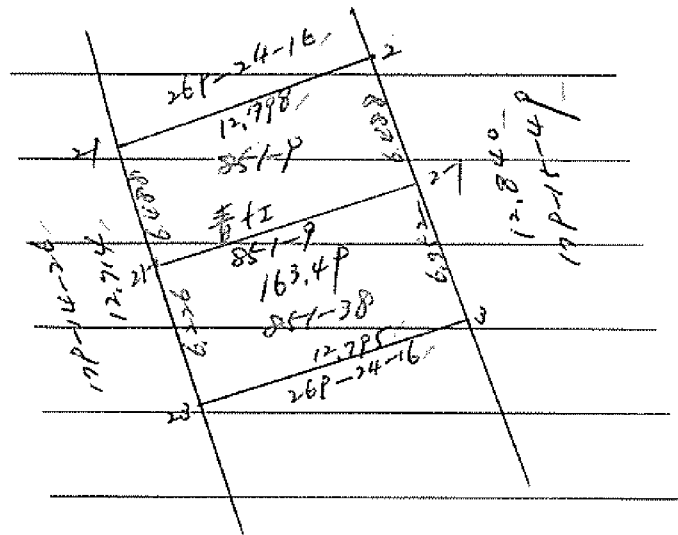


B.NO.29

各筆面積計算書

地番	算式	隅切	地積	摘要
	青江 851010		154.14	✓
	青江 851009		163.49	✓
	青江 851007		164.21	✓
	青江 851006		131.46	✓
	青江 851005		132.37	✓
	青江 851003		163.61	✓
	青江 851002		165.75	✓
	保留 未指定地 3-29-2		84.43	✓
	青江 84902		495.03	✓
	青江 843		205.10	✓
	青江 847		436.08	✓
	青江 846		101.23	✓
	青江 87202		273.25	✓
	青江 844		229.65	✓
	保留地 3- <del>29</del> <sup>29</sup> -1		118.75	✓
	水路		104.19	✓
	計		3,122.74	✓
	全体		3,122.78	✓
		差	-0.04	✓
	換地		2815.37	✓
	未指定地		84.43	✓
	保留地		118.75	✓
	水路		104.19	✓





# 面積計算書

工区

3

ブロック

2P

計算者

精算者

図章

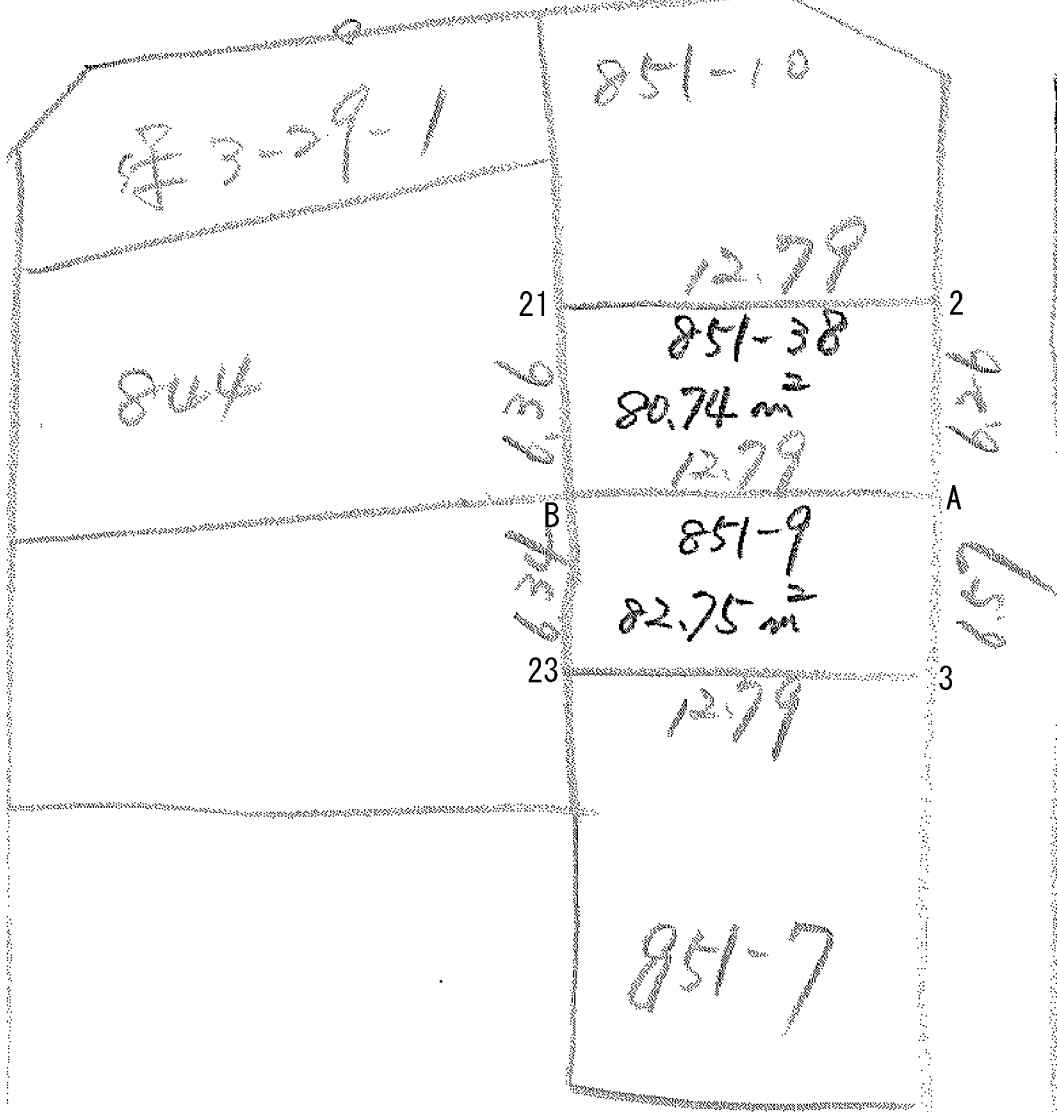
備考

851-P

851-38

点	①	②	③	④	⑤	⑥	③ × ⑤		② × ⑥	
	X	X - (定数)	X <sub>n-1</sub> - X <sub>n+1</sub>	Y	Y - (定数)	Y <sub>n-1</sub> - Y <sub>n+1</sub>	+	-	+	-
		-152,330			-37,330					
2-1	-152,338,307	8,307	-6,620	-37,344,687	14,687	-12,711	97,227,940		105,590,277	
2	-152,338,174	8,174	+6,354	-37,331,890	1,890	-12,880		12,009,060	105,281,120	
2-1	-152,344,661	14,661	+6,620	-37,331,807	1,807	+12,711		11,962,340		186,355,971
2-1	-152,344,794	14,794	-6,354	-37,344,601	14,601	+12,880	92,774,754			190,546,720
							190,002,694	23,971,400	210,871,397	376,902,691
							166,031,294		1/2 = 83,015,647	166,031,294
									83.02 m <sup>2</sup> = 83.	
		-152,340			-37,330					
2-1	-152,344,794	4,794	-6,359	-37,344,601	14,601	-12,712	92,847,759		60,941,928	
2-1	-152,344,661	4,661	+6,219	-37,331,807	1,807	-12,877		11,237,733	60,019,697	
3	-152,351,013	11,013	+6,359	-37,331,724	1,724	+12,712		19,962,916		129,997,256
2-3	-152,351,020	11,020	-6,219	-37,344,519	14,519	+12,877	90,293,669			141,904,540
							183,141,420	22,200,649	120,961,025	281,901,796
							160,940,771		1/2 = 80,470,385.5	160,940,771

地高の入れ替え  
寸法、地積の整理



# 面積計算書

工  
区

ブ  
ロ  
ック

計  
算  
者

精  
算  
者

備  
考  
197

地 番	点	①	②	③	④	⑤	⑥	③ × ⑤	② × ⑥
		X	X-(定数)	X <sub>n-1</sub> -X <sub>n+1</sub>	Y	Y-(定数)	Y <sub>n-1</sub> -Y <sub>n+1</sub>		
2		338.174	8.174 -	6.126	331.890	1.890 +	12.878		
A		344.433	14.433 -	6.412	331.809	1.809 -	12.7612		
B		344.666	14.666 +	6.126	344.602	14.602 -	12.878	8P 45185	
21		338.307	8.307 +	6.412	344.687	14.687 +	12.7612	95348004	
								1847P 856	
								161 477688 ✓	
								80 738844	
									80.74 m <sup>2</sup>
A		344.433	4.433 -	6.347	331.809	1.809 +	12.878		
3		351.013	11.013 -	6.587	331.724	1.724 -	12.710		
23		351.020	11.020 +	6.347	344.519	14.519 -	12.878	P2 1520P3	
B		344.666	4.666 +	6.587	344.602	14.602 +	12.710	P6 183374	
								188 335467	
								165 4P 7756 ✓	
								x/2 = 82748878 ✓	
									82.75 m <sup>2</sup>

183 4722P6  
182 020775  
188 868748  
105 5P 8584  
104 767884  
863356  
372 341044  
210 032656  
370 8P 7744  
161 477688 ✓  
160 865088  
80 738844

11 578140  
11 744028  
23 322168  
210 032656  
11 481723  
11 355P 88  
P2 1520P3  
P6 183374  
22 837711  
186 3P 3034  
281 8P 07P2  
165 4P 7756 ✓  
82 748878

105 264772  
188 868748  
372 341044  
370 8P 7744  
57 088174  
13P P75230  
141 P15560  
5P 204860  
281 8P 07P2