

BLOCK NO. 57

街 区 計 算

街区略図

工区

ヨ

ブロック

~~85~~ 87

記入者



点検者



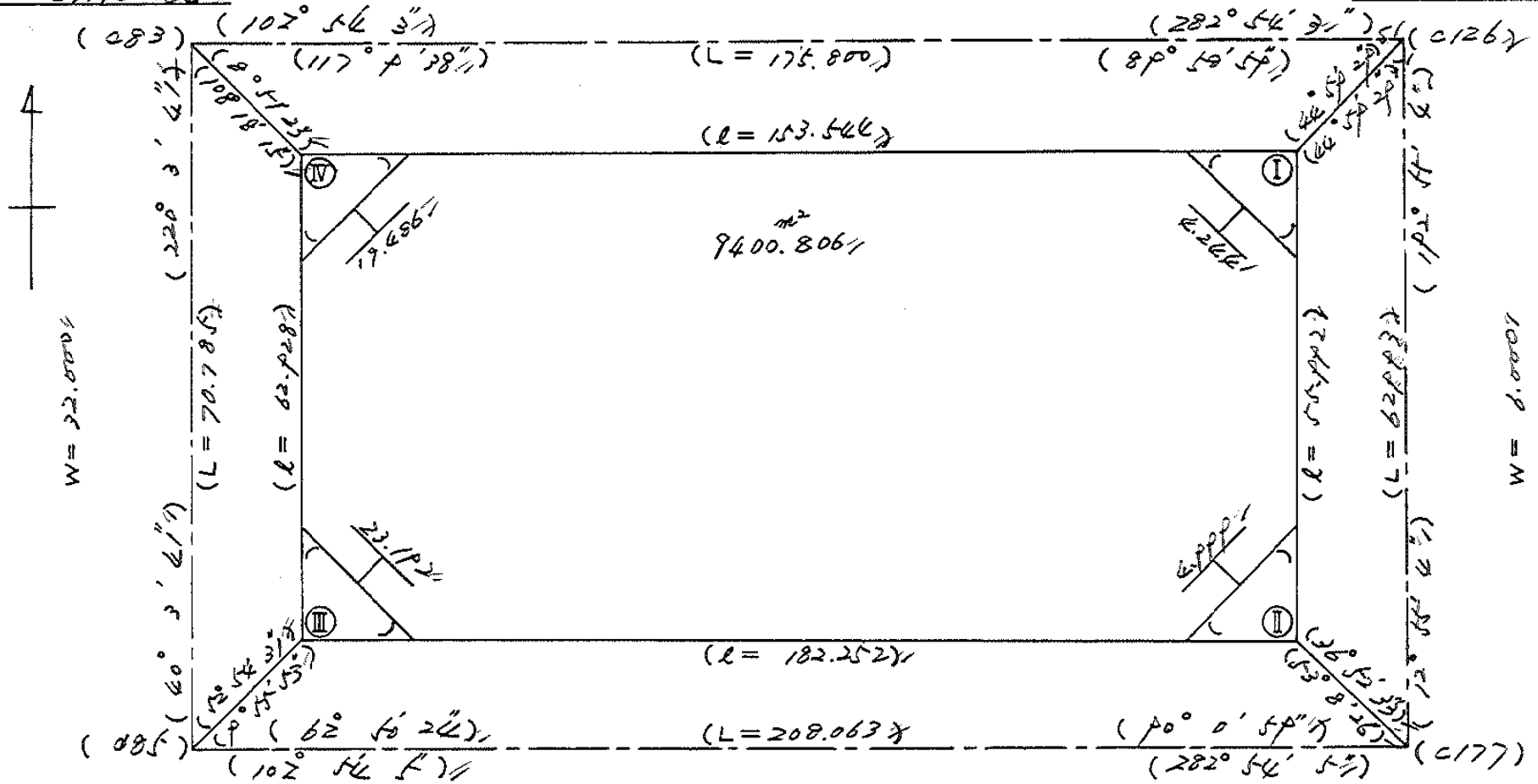
$X = -152.169.724$

$Y = -37.150.863$

$W = 6.000$

$X = -152.188.174$

$Y = -37.779.481$



$X = -152.203.404$

$Y = -37.116.405$

$W = 8.000$

$X = -152.260.372$

$Y = -37.713.583$

画地計算

92板-1

面積計算書		工区	ウ	ブロック	57	計算者	精算者	備考	陽功 新保 103	
点	①	②	③	④	⑤	⑥	③ × ⑤	② × ⑥		
	X	X-(定数)	X _{n-1} -X _{n+1}	Y	Y-(定数)	Y _{n-1} -Y _{n+1}	+ -	+ -		
I	-152,191.229	-152,100 91.229	+3.594	-37,783.077	-37,700 83.077	-2.253		298.578738	205.528937	
1	-152,194.153	94.153	-0.670	-37,783.748	83.748	+2.924	26.111160		275.303372	
18	-152,190.559	90.559	-2.924	-37,786.001	86.001	-0.671	251.466924	60.765089		
							307.578084	298.578738	266.304026	275.303372
							8.999346			8.999346
								y = 4.499673		
1	-152,194.153	-152,100 94.153	+27.358	-37,783.748	-37,700 83.748	+3.197		2291.177984	301.007141	
2	-152,217.917	117.917	+18.529	-37,789.198	89.198	+28.073	1658.101622		3310.283941	
20	-152,212.742	112.742	-31.869	-37,811.821	111.821	+16.499	2563.623449		1860.130258	
17	-152,186.048	86.048	-22.183	-37,805.697	105.697	-25.820	2340.676557	2221.759360		
18	-152,190.559	90.559	+8.105	-37,786.001	86.001	-21.949		697.038105	1987.679491	
							5702.302000	4646.37571	4207.43885	5471.421340
							1261.982689			1261.982689
								y = 600.991244		

面積計算書

工区

ウ

ブロック

857

計算者



精算者



備考

青工 553-1(0)

陽切

点	①	②	③	④	⑤	⑥	③ × ⑤		② × ⑥	
	X	X-(定数)	X _{n-1} -X _{n+1}	Y	Y-(定数)	Y _{n-1} -Y _{n+1}	+	-	+	-
+	-152, 217.917,	-152, 200 17.917,	+ 28.933,	-37, 789.198,	-37, 700 89.198,	- 11.630,		2580.765224,	208.374710,	
ウ	-152, 242.880,	42.880,	+ 25.339,	-37, 794.922,	94.922,	+ 6.324,		2405.228558,		271.173120,
ㄥ	-152, 243.256,	43.256,	- 3.488,	-37, 795.522,	95.522,	+ 17.467,	333.120736,			255.552552,
6	-152, 239.392,	39.392,	- 29.309,	-37, 812.389,	112.389,	+ 11.030,	3294.009201,			434.493760,
19	-152, 213.947,	13.947,	- 21.475,	-37, 806.552,	106.552,	- 23.191,	2288.204200,		323.444877,	
							5915.394137,	4985.994292,	531.819587,	1461.219432,
							929.399845,			929.399845,
								1/2 = 464.69,		
3	-152, 242.880,	-152, 200 42.880,	+ 0.670,	-37, 794.922,	-37, 700 94.922,	- 2.924,		63.597740,	125.381120,	
II	-152, 245.804,	45.804,	+ 2.254,	-37, 795.593,	95.593,	+ 3.595,		215.466622,		164.665380,
5	-152, 245.134,	45.134,	- 2.924,	-37, 798.517,	98.517,	- 0.671,	288.063708,		30.284914,	
								279.064362,	155.666034,	
							8.999346,			8.999346,
									1/2 = 4.499673,	

面積計算書		工区	ブロック	57	計算者	精算者	備考	青正 54-5
点	① X	② X-(定数)	③ X _{n-1} -X _{n+1}	④ Y	⑤ Y-(定数)	⑥ Y _{n-1} -Y _{n+1}	③ × ⑤ +	⑤ × ⑥ +
19	-152,213.947	-152,100 113.947	-26.706	-37,206.552	-37,200 6.552	-6.130	174.977712	698.495110
16	-152,175.306	75.306	+13.495	-37,252.594	52.594	+58.009	709.756030	4368.425754
7	-152,227.442	127.442	+26.706	-37,264.561	64.561	+6.130	1724.166066	781.219460
21	-152,202.012	102.012	-13.495	-37,258.724	58.724	-58.009	792.480380	5917.614108
							967.458092	2433.922096
							1466.464004	1466.464004
								1/2 = 733.232002
22	-152,197.036	-152,100 97.036	+35.183	-37,261.172	-37,200 61.172	-17.475	2152.214476	1695.704100
9	-152,226.660	126.660	+24.063	-37,867.972	67.972	+31.078	1635.610236	3936.339480
10	-152,221.099	121.099	-35.183	-37,892.250	92.250	+17.475	3245.631750	2116.205025
23	-152,191.477	91.477	-24.063	-37,885.447	95.447	-31.078	2056.111161	2242.922206
							5301.742911	3787.824712
							1513.918199	4538.626306
								6052.544505
								1513.918199
								1/3 = 756.9590995

面積計算書		工区	ウ	ブロック	57	計測者	精算者	備考	525-1, 526-1	524-2(5)
点	①	②	③	④	⑤	⑥	③ ×	⑤	② ×	⑥
	X	X-(定数)	X _{n-1} -X _{n+1}	Y	Y-(定数)	Y _{n-1} -Y _{n+1}	+	-	+	-
24	-152,197.713	-152,100 97.713	+38.781	-37,886.279	-37,800 86.279	-61.828			3369.254499	6041.399364
10	-152,221.099	121.099	+5.247	-37,892.250	92.250	+84.557			424.035750	10239.762143
11	-152,202.960	102.960	-38.781	-37,971.436	171.436	+61.828	6648.459516			6365.910880
12	-152,182.318	82.318	-5.247	-37,954.078	154.078	-84.557	208.447266			6960.563126
							7456.906782	3853.290249	13001.962490	16605.579023
							3603.616533			3603.616533
									$\frac{1}{2} = 1801.8082665$	
14	-152,174.524	-152,100 74.524	+28.071	-37,856.005	-37,800 56.005	-19.105			1572.116355	1423.981020
22	-152,197.036	97.036	+16.953	-37,861.172	61.172	+29.442			1077.048916	2856.933912
23	-152,191.477	91.477	-28.071	-37,885.447	85.447	+19.105	2398.587737			1747.668025
13	-152,168.965	68.965	-16.953	-37,880.277	80.277	-29.442	1260.935981			2030.467530
							3759.518718	2609.165271	3454.242580	4604.601997
							1152.258467			1152.258467
									$\frac{1}{2} = 575.1767235$	

面積計算書		工区	3	ブロック	57	計測者	精算者	備考	525-9	525-7
点	①	②	③	④	⑤	⑥	③	⑤	②	⑥
	X	X-(定数)	X _{n-1} -X _{n+1}	Y	Y-(定数)	Y _{n-1} -Y _{n+1}	+	-	+	-
13	⁻¹⁵² 168.965	^{-152,100} 68.965	+20.311	⁻³⁷ 880.277	^{-37,800} 80.277	-0.221			2433.276147	15241265
24	197.713	97.713	+16.761	886.879	86.879	+68.926			1456.178919	5757.836238
29	185.726	85.726	-26.140	939.203	129.203	+49.033	3638.766420			4203.402958
28	171.573	71.573	-2.736	935.912	185.912	-48.753	527.767232		2429.398469	
25	181.990	81.990	+8.915	890.450	90.450	-47.859			806.361750	8922.959410
26	180.488	80.488	-12.192	888.053	88.053	-4.852	1073.542176		290.527776	
27	169.798	69.798	-12.026	885.598	85.598	-0.953	1120.125428		26517494	
13'	167.402	67.402	-0.833	887.100	87.100	-5.321	72.554300		358.646042	
									6412.765556	4695.816816
									2244.290456	9961.229196
									1716.948740	1716.948740
									1/2 = 858.474370	
12	⁻¹⁵² 169.819	^{-152,100} 69.819	-10.745	⁻³⁷ 943.569	^{-37,900} 43.569	-18.166	468.148905		1268.321954	
28	171.573	71.573	+15.907	935.912	35.912	-4.366			571.252184	312.487718
29	185.726	85.726	+10.745	937.203	29.203	+18.166			42.236235	15571.298516
12	182.318	82.318	-15.907	954.078	54.078	+4.366	860.218746			259.400288
									1328.367651	992.688419
									1580.819672	1916.698904
									335.879232	335.879232

1/2 = 167.939616

面積計算書		Ⅰ 区	ウ	ブ ロ ッ ク	57	計 算 者	精 算 者	備 考	525-0	
点	①	②	③	④	⑤	⑥	③	⑤	②	⑥
	X	X-(定数)	X _{n-1} -X _{n+1}	Y	Y-(定数)	Y _{n-1} -Y _{n+1}	+	-	+	-
12'	-152,169.819	-152,100 69.819	-25.043	-37,943.589	-37,800 143.589	+ 42.295	3595.399467			2952.994605
14'	-152,156.947	+6.947	-2.417	-37,932.745	132.745	-56.469	320.244665		3215.740143	
13'	-152,167.402	67.402	+12.851	-37,887.100	87.100	-47.147		1119.322100	3197.802094	
27	-152,169.798	69.798	+13.086	-37,885.592	85.592	+ 0.953		1120.135429		66.517494
26	-152,180.428	80.428	+12.192	-37,882.053	88.053	+ 4.852		1073.542176		390.527776
25	-152,181.990	81.990	-10.669	-37,890.450	90.450	+ 55.516	965.011050			451.756840
							4281.254182	3312.999704	6393.562237	7961.796715
							1568.254478			1568.254478
									1/2 = 784.127239	

面積計算書							工区	ウ	ブロック	57	計算者	精算者	備考	小堤 春江 524-1
点	①	②	③	④	⑤	⑥	③ × ⑤	② × ⑥						
	X	X-(定数)	X _{n-1} -X _{n+1}	Y	Y-(定数)	Y _{n-1} -Y _{n+1}			+	-	+	-		
14	-152,174.524	-152,100 74.524	+ 51.912	-37,856.005	-37,800 56.005	+ 12.941	2907.331560	864.415084						
9	-152,226.660	126.660	+ 52.360	-37,867.972	67.972	+ 10.993	3559.013920	1392.373380						
8	-152,226.884	126.884	- 51.912	-37,866.998	66.998	- 12.941	3478.000176	1642.005844						
15	-152,174.748	74.748	- 52.360	-37,855.031	55.031	- 10.993	2881.423160	821.704764						
							6359.423336	6466.345480	2463.710608	2356.788464				
								106.922144	106.922144					
								1/2 = 53.461072						
16	-152,175.306	-152,100 75.306	+ 15.964	-37,852.594	-37,800 52.594	+ 53.027	839.610616	3893.251262						
21	-152,202.012	102.012	+ 37.436	-37,858.724	58.724	- 40.773	2198.391664	4159.335276						
20	-152,212.742	112.742	- 15.964	-37,811.821	11.821	- 53.027	188.710444	2978.370034						
17	-152,186.048	86.048	- 37.436	-37,805.697	4.697	+ 40.773	213.272892	3508.435104						
							401.982226	3038.002280	10137.705310	7501.686366				
								2636.018944	2636.018944					
								1/2 = 1318.009472						

面積計算書		工区	ブロック	計測者	精算者	備考	水路		
点	①	②	③	④	⑤	⑥	③ × ⑤	② × ⑥	
	X	X-(定数)	X _{n-1} -X _{n+1}	Y	Y-(定数)	Y _{n-1} -Y _{n+1}	+ -	+ -	
III	-152,205.111	-152,100	- 42.174	-37,973.244	-37,700	+ 172.919	11,523.792456	18175.629009	
11	-152,202.960	102.960	+ 21.773	-37,971.436	+ 273.244	- 106.246	5909.976028	10239.088160	
8	-152,226.884	126.884	- 28.212	-37,866.998	166.998	- 116.405	4711.347576	14769.932020	
15	-152,174.748	74.748	- 51.578	-37,855.031	155.031	- 14.404	9996.188918	1076.670192	
16	-152,175.306	75.306	+ 52.694	-37,852.594	152.594	+ 9.530	8040.988236	717.666180	
7	-152,227.442	127.442	+ 67.950	-37,864.561	164.561	- 57.072	11181.919950	7273.369824	
4	-152,243.256	143.256	+ 17.692	-37,795.522	95.522	- 66.044	1689.975224	9461.199264	
5	-152,245.134	145.134	- 38.145	-37,798.517	98.517	+ 177.722	3757.930965	25793.504748	
							27989.259915	26822.659438	
							43520.259460	44686.859937	
							1166.600477	1166.600477	
								1/2 = 583.3002385	

計年月
算日

計算者



検査者



B.NO. ~~85~~ 57 各筆面積計算書

地番	算式	隅切	地積	摘要
	新保 103		630.99	
	青江 553.01 (4)		464.69	
	青江 545		1,396.83	
	青江 535.01 (10)		756.95	
	青江 525.01 526.01 }		1,801.80	
	青江 525.09			858.47
	青江 525.07		1,028.39	167.93
	青江 525.08		784.12	
	青江 524.02 (4)		575.17	
	青江 524.01		1,318.00	
	水路		583.30	
	管理道		53.46	
	計		9,391.78	
	全体		9,391.80	
		差	-0.02	
	換地		8,754.94 ⁵	
	水路		583.30	
	管理道		53.46	