

BLOCK NO. 58

街 区 計 算

街区略図

工区

3

ブロック

58

記入者

点検者

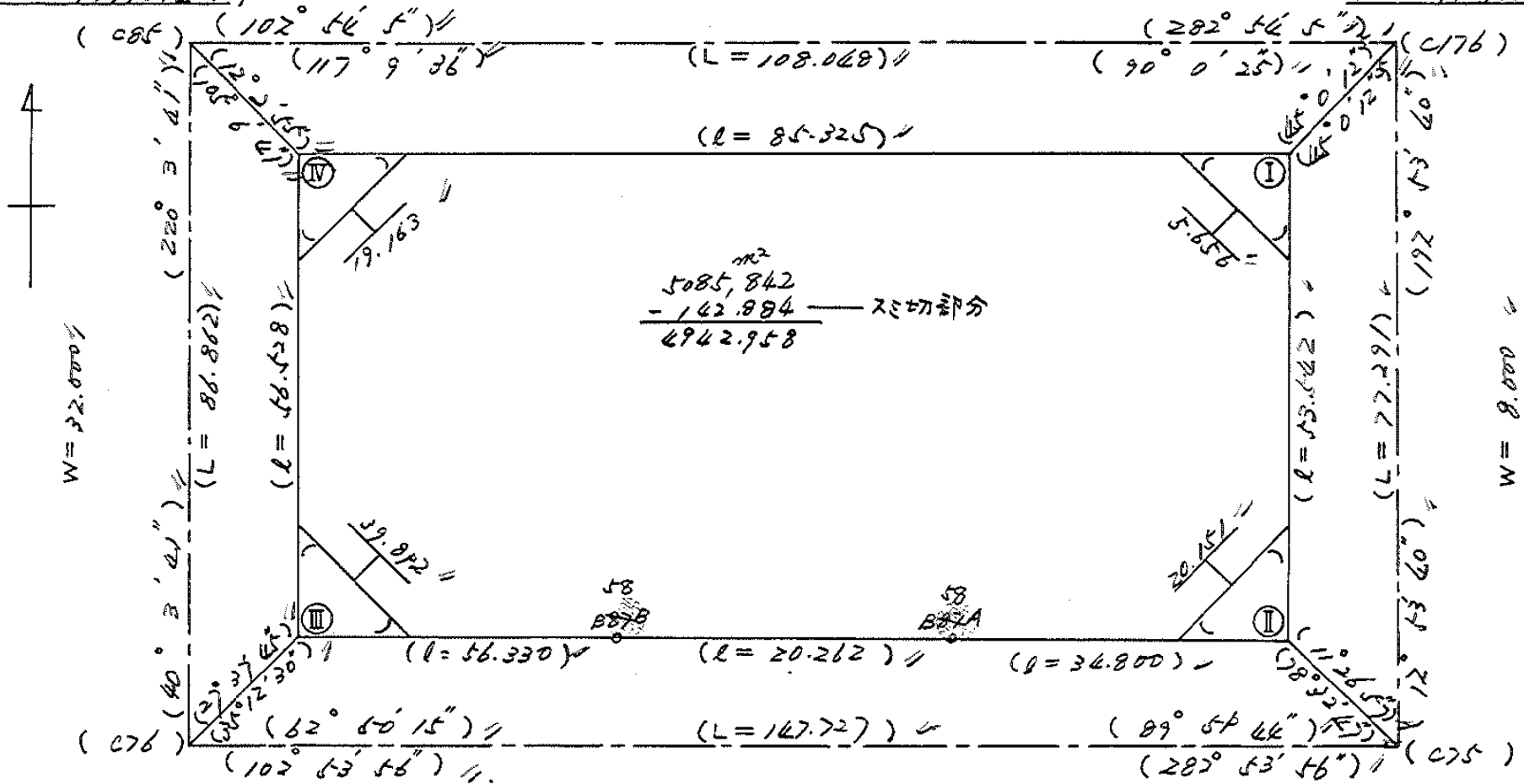
$X = -152.203.909$

$Y = -37.996.605$

$W = 8.000$

$X = -152.228.037$

$Y = -37.991.068$



$X = -152.270.601$

$Y = -38.052.315$

$W = 46.000$

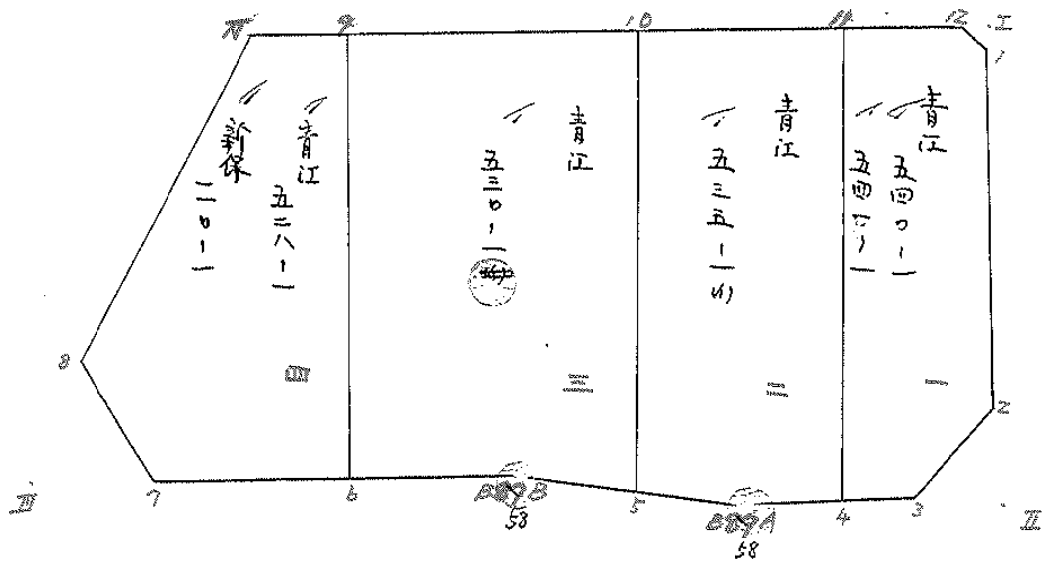
$W =$

$W = 39.500$

$X = -152.303.379$

$Y = -37.908.316$

地 地 計 算



4枚

面積計算書						工区	ブロック	計測者	精算者	備考
点	①	②	③	④	⑤	⑥	③ × ⑤	② × ⑥		
	X	X-(定数)	X _{n-1} -X _{n+1}	Y	Y-(定数)	Y _{n-1} -Y _{n+1}	+	-		
1	-152 233.967	-152, 200 33.967	+ 44.332	-37 896.528	-37, 900 6.428	+ 7.072	287.399	296.1		
2	274.705	74.705	+ 47.314	905.855	15.855	+ 19.809	710.163	470.134		
3	281.281	81.281	+ 5.004	916.337	26.337	+ 17.348	131.790	348.788		
4	279.709	79.709	- 43.759	923.203	33.203	- 5.106	11784.98007	406.994154		
11	227.522	27.522	- 49.336	911.231	21.231	- 24.420	1047.452616	672.087249		
12	230.373	30.373	+ 6.445	898.783	8.783	- 14.703	46.606435	446.574219		
							2832.412693	1227.959549		
							1604.453144	1525.655613		
								3130.108757		
								1604.453144		
								1/2 = 802.226572		
11	-152 227.522	-152, 200 27.522	+ 47.442	-37 911.231	-37, 900 11.231	- 11.407	646.254202	313.943454		
4	279.709	79.709	+ 47.943	923.203	23.203	+ 30.499	1112.421429	2431.044791		
5	275.465	75.465	- 6.147	941.730	41.730	+ 23.207	1256.514310	1741.316255		
6	273.562	73.562	- 43.298	946.410	46.410	- 7.120	12473.560180	523.761440		
10	222.167	22.167	- 46.040	934.610	34.610	- 35.179	11593.444400	779.812893		
							4323.510290	9758.67563		
							2564.243259	1617.517787		
								4122.361045		
								2564.243259		
								1/2 = 1282.1216295		

分筆後の座標なし

分筆後の座標なし

1.青江 540-1
541-1
2.青江 535-1(1)

座標法面積計算 (530-5)

測点	X	Δx	Y	Δy	(+) F_1	(-) F_2
					$\Delta x \cdot \Delta y$	$\Delta x \cdot \Delta y$
F	-218.794		-949.334			
		-25.638		-1904.507	48827.750466	
C	-244.432		-955.173			
		+0.211		-1911.262		403.276282
E	-244.221		-956.089			
		-23.392		-1917.528	44855.282816	
D	-267.613		-961.459			
		+3.904		-1939.965		7573.62336
G	-263.709		-978.506			
		+49.039		-1945.846		95422.341994
H	-214.670		-967.340			
		-4.124		-1916.674	7904.263576	
F	-218.794		-949.334			
	-	-	-	-		
	-	-	-	-		
	-	-	-	-		
	-	-	-	-		
	-	-	-	-		
	-	-	-	-		
	-	-	-	-		
				$\bar{Z} =$	10,1587.396858	103399.241636
				$F = [F_1] \sim [F_2] =$	1811.844778	
計算者				$F / 2 =$	905.922389	
点検者				$\times 0.3025 =$	274.104	

面積計算書						工区	ブロック	計算者	精算者	備考
		2	58							隅切 I, II
点	①	②	③	④	⑤	⑥	③ × ⑤		② × ⑥	
	X	X-(定数)	X _{n-1} -X _{n+1}	Y	Y-(定数)	Y _{n-1} -Y _{n+1}	+	-	+	-
I	⁻¹⁵² 231.043	^{-152,200} 31.043	⁻³⁷ + 3.594	895.859	^{-37,890} 5.859	- 2.254		21.057246	70.001965	
1	233.967	33.967	- 0.670	896.528	6.528	+ 2.924	4.373760			99.319508
12	230.373	30.373	- 2.924	898.783	8.783	- 0.669	21.681492		20.319437	
							30.054242	21.057246	90.321502	99.319508
							8.998006			8.998006
									1/2 = 4.499003	
Σ	⁻¹⁵² 274.705	^{-152,270} 4.705	⁻³⁷ + 1.914	905.855	^{-37,900} 5.855	- 2.429		11.440670	40.128945	
II	283.224	13.224	+ 6.476	907.808	7.808	+ 10.482		51.345408		128.729270
3	281.281	11.281	- 8.530	916.337	16.337	- 1.943	139.354610		22.031793	
							139.354610	62.786078	62.160738	138.729270
							76.568532			76.568532
									1/2 = 38.284266	

面積計算書						工区	ウ	ブロック	40	計算者	精算者	備考	隅切Ⅱ		
点	①	②	③	④	⑤	⑥	③	×	⑤	②	×	⑥			
	X	X-(定数)	X _{n-1} -X _{n+1}	Y	Y-(定数)	Y _{n-1} -Y _{n+1}	+	-	+	-					
7	-152,258.607	-152,258.607	+ 11.481	-38,000.787	-38,000	+ 9.653			9.03547			179.61337			
Ⅱ	-152,258.258	-152,258	- 14.830	-38,015.409	-38,015.409	+ 4.969	228.515470					75.817002			
8	-152,243.777	-152,243.777	+ 3.349	-38,005.746	-38,005.746	+ 14.622			19.276844	55.227294					
							228.515470		28.312391	55.227294		255.430373			
							200.203079					200.203079			
										1/2 = 100.1015395					

