

BLOCK NO. 38

街 区 計 算

街区略図

工区

3

ブロック

38

記入者

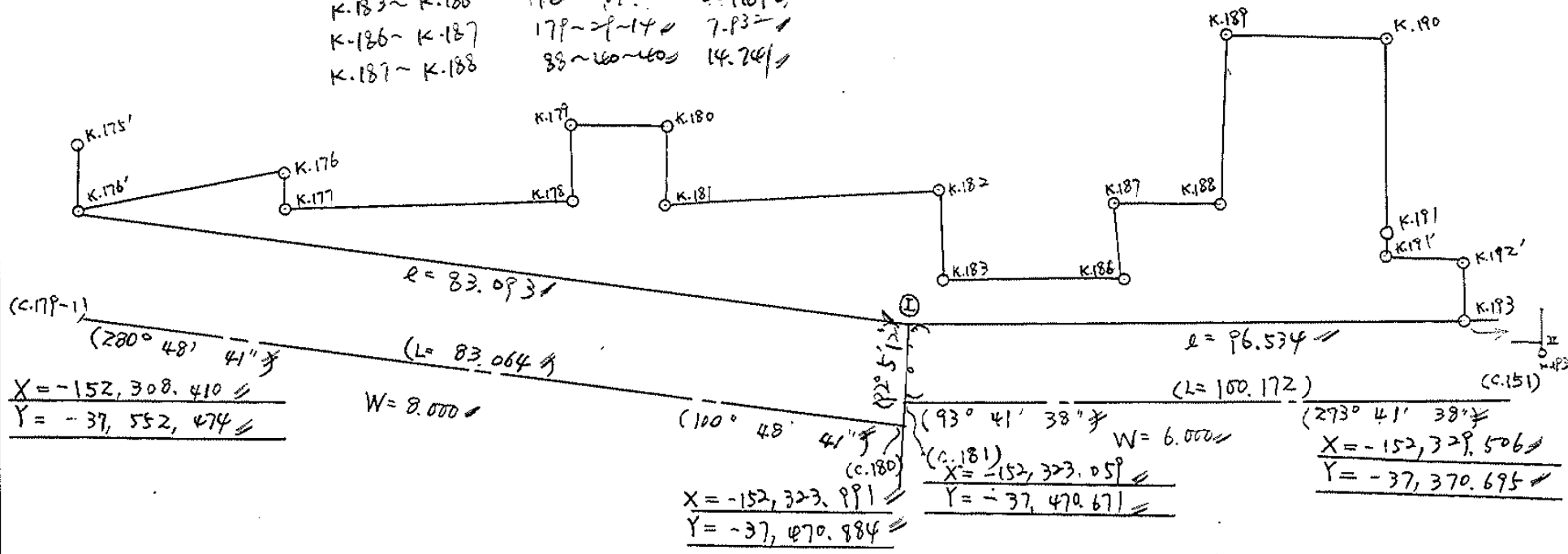


点検者



K.175' ~ K.176'	3 ~ 37 ~ 36"	7,240
K.176' ~ K.176	89 ~ 23 ~ 58"	26,504
K.176 ~ K.177	7 ~ 50 ~ 35"	3,613
K.177 ~ K.178	93 ~ 39 ~ 56"	27,606
K.178 ~ K.179	4 ~ 12 ~ 37"	5,125
K.179 ~ K.180	94 ~ 8 ~ 17"	1,895
K.180 ~ K.181	2 ~ 36 ~ 46"	6,450
K.181 ~ K.182	88 ~ 50 ~ 51"	27,196
K.182 ~ K.183	1 ~ 3 ~ 26"	8,839
K.183 ~ K.186	192 ~ 44 ~ 2"	22,181
K.186 ~ K.187	179 ~ 29 ~ 14"	7,932
K.187 ~ K.188	38 ~ 60 ~ 40"	14,241

K.188 ~ K.189	0 ~ 44 ~ 18"	18,825
K.189 ~ K.190	82 ~ 18 ~ 24"	29,816
K.190 ~ K.191	179 ~ 5 ~ 47"	22,638
K.191 ~ K.191'	3 ~ 48 ~ 42"	3,437
K.191' ~ K.192'	93 ~ 40 ~ 19"	20,610
K.193 ~ K.192'	2 ~ 38 ~ 40"	4,430



(C.179-1)
 (280° 48' 41" #)
 X = -152,308.410
 Y = -37,552.474

(L = 83.064 #)
 W = 8.000

(100° 48' 41" #)
 (C.180)
 X = -152,323.991
 Y = -37,470.884

(93° 41' 38" #)
 (C.181)
 X = -152,323.059
 Y = -37,470.671

(273° 41' 38" #)
 X = -152,329.506
 Y = -37,370.695

面積計算書

工区

3

ブロック

38

計算者



精算者



備考

全体

491

点	①	②	③	④	⑤	⑥	③ × ⑤	② × ⑥
	X	X-(定数)	X _{n-1} -X _{n+1}	Y	Y-(定数)	Y _{n-1} -Y _{n+1}	+ -	+ -
K.176'	-152 304.503	-152.200 104.503	-15.864	-37 551.60P	-37.300 251.60P	+ 55.116	3,991.525176	5,159.787348
K.176	304.225	104.225	+ 3.301	525.106	225.106	- 26.010	743.074906	2,710.892250
K.177	307.804	107.804	+ 5.337	525.59P	225.599	- 27.057	1,204.021863	2,916.852828
K.178	309.562	109.562	- 4.151	498.04P	198.049	- 27.985	822.101399	3,066.092570
K.179	303.653	103.653	- 5.195	497.614	197.614	- 10.304	1,026.604730	1,068.040512
K.180	304.367	104.367	+ 7.157	487.745	187.745	- 9.575	1,343.690965	999.314025
K.181	310.810	110.810	+ 5.896	488.039	188.039	- 26.897	1,108.677944	2,980.456570
K.182	310.263	110.263	+ 8.290	460.848	160.848	- 27.028	1,333.429920	2,980.188364
K.183	319.100	119.100	+ 9.895	461.011	161.011	- 21.993	1,593.203845	2,619.366300
K.186	320.158	120.158	- 6.874	438.855	138.855	- 22.085	954.489270	2,653.689430
K.187	312.228	112.226	- 8.015	438.926	138.926	- 14.670	1,113.491890	1,646.355420
K.188	312.143	112.143	- 18.906	424.185	124.185	- 14.984	2,347.841610	1,680.350712
K.189	293.320	93.320	- 17.623	423.942	123.942	- 30.035	2,184.229866	2,802.866200
K.190	294.520	94.520	+ 23.835	394.150	94.150	- 20.149	2,244.065250	2,849.683480
K.191	317.155	117.155	+ 26.064	393.793	93.793	- 0.129	2,444.620752	15,112.9995
K.191'	320.584	120.584	+ 4.749	394.021	94.021	- 20.340	446.505129	2,452.678560
K.192	321.904	121.904	+ 5.724	373.453	73.453	- 20.365	420.444972	2,482.574960

面積計算書

工区

3

ブロック

29

計算者



精算者



備考

全体

292

点	①	②	③	④	⑤	⑥	③ × ⑤		② × ⑥
	X	X-(定数)	X _{n-1} -X _{n+1}	Y	Y-(定数)	Y _{n-1} -Y _{n+1}	+	-	+ -
II	⁻¹⁵² 326.308	126.308	-1.815	⁻³⁷ 773.656	73.656	+ 96.537	133.685640		12,193,395,396
I	320.089	120.089	-2.805	469.990	169.990	+ 177.953	3,706.631950		71,370,197,817
							16,280.601531	12,881,736,146	35,924,515,176
							3,398.865385		39,323,382,561
								1/2 = 1,699,432,692.5	3,398,865,385

画地計算

面積計算書

工区

J

ブロック

28

計算者

縮尺者



備考

青江 8PP-6

点	①	②	③	④	⑤	⑥	③ × ⑤		② × ⑥	
	X	X-(定数)	X _{n-1} -X _{n+1}	Y	Y-(定数)	Y _{n-1} -Y _{n+1}	+	-	+	-
K11'	-152. 320.584	-152.320 0.584	-3.071	-37 394.021	-37.370 24.021	-20.861	73.768491		12.182824	
K12'	321.904	1.904	+5.724	373.453	3.453	-20.365		19.764972	38.774960	
II	326.308	6.308	+3.071	373.656	3.656	+20.861		11.727576		131.591188
I	324.975	4.975	-5.724	394.314	24.314	+20.365	139.193336			101.315875
							212.941827	30.992548	50.957784	232.907063
							181.949279			181.949279
								$\frac{1}{2} = 90.9746395$		

面積計算書

工区

区

ブロック

地番

計算者

精算者

備考

江 896-4
江 89615

点	①	②	③	④	⑤	⑥	③ × ⑤		② × ⑥	
	X	X-(定数)	X _{n-1} -X _{n+1}	Y	Y-(定数)	Y _{n-1} -Y _{n+1}	+	-	+	-
K188	-152 312.143	-152.300 12.143	+ 0.037	-37 424.185	-37.424 0.185	- 0.573			0.068450	6.957939
8	323.037	23.037	+ 10.857	424.325	0.325	+ 0.713			3.528525	16.42538
7'	323.000	23.000	- 10.894	424.898	0.898	- 0.140	9.782812			3.220000
							9.782812	3.596975	10.177939	16.42538
							6.185837			6.247442
									$\frac{1}{2} = 3.0929185$	
K189	-152 293.320	-152.200 93.320	- 28.517	-37 423.942	-37.300 123.942	- 30.175	3.534454			2.815.931000
K190	294.520	94.520	+ 23.835	394.150	94.150	- 30.149			2.24406525	2.849.683400
K191	317.155	117.155	+ 30.455	393.793	93.793	+ 0.164			2.856.465815	19.213420
9	324.975	124.975	+ 5.882	394.314	94.314	+ 30.532			6.54.754998	3.815.736700
8	323.037	123.037	- 31.655	424.325	124.325	+ 29.628	3.935.507875			3.645.340236
							7.469.961889	5.655.286013	5.665.614400	7.480.290356
							1.814.675876			2.814.675876
									$\frac{1}{2} = 9.07337938$	

面積計算書

工区

ウ

ブロック

ウ8

計算者

精算者



備考

青江 904 (1)

敷地 221の26, 221の3-6

点	①	②	③	④	⑤	⑥	③ × ⑤		② × ⑥		
	X	X-(定数)	X _{n-1} -X _{n+1}	Y	Y-(定数)	Y _{n-1} -Y _{n+1}	+	-	+	-	
K183	-152 319.100	-152,300 19.100	-0.509	-37 461.011	-37,400 61.011	-22.185	31.054599			423.782500	
K186	320.158	20.158	+3.000	438.855	38.855	-22.173		116.565000		446.963334	
7	322.100	22.100	+0.509	438.838	38.838	+22.185		19.768542			490.288500
6	320.667	20.667	-3.000	461.040	61.040	+22.173	183.120000				458.249391
							214.174599	136.333542	870.698834	948.537891	
							77.841057				77.841057
									1/2 = 389.205285		
K187	-152 312.226	-152,310 2.226	-9.957	-37 438.926	-37,400 38.926	-14.653	387.586182			32.617578	
K188	317.143	2.143	+10.774	424.185	24.185	-14.028		260.569190		30.062004	
7'	323.000	13.000	+9.957	424.898	24.898	+14.653		247.909388			190.489000
7	322.100	12.100	-10.774	438.838	38.838	+14.028	418.440612				169.738800
							806.026794	508.478576	62.679582	360.227800	
							297.58218				297.548218
									1/2 = 148.774109		

面積計算書

工区: 3
 ブロック: 08
 計算者: [署名]
 籍地者: [署名]
 備考: 江 910-1
 江 906-3

点	①	②	③	④	⑤	⑥	③ × ⑤		② × ⑥	
	X	X-(定数)	X _{n-1} -X _{n+1}	Y	Y-(定数)	Y _{n-1} -Y _{n+1}	+	-	+	-
12	-152,308.25	-152,300 8.25	-7.130	518.59	-37,400 118.599	-21.15	134,016.870			174,516.90
K178	309.562	9.562	-4.598	498.04	98.049	-20.985	450.829302			200.658570
K179	303.653	3.653	-5.195	497.614	97.614	-10.304	507.104730			32.640512
K180	304.767	4.367	+7.157	487.745	87.745	-9.575		627.990965		41.814025
K181	310.810	10.810	+12.218	488.039	88.039	+0.595		1,075.660502		6.431950
5	316.585	16.585	-0.118	488.340	88.340	+31.161		10,424.120		516.805785
4	310.692	10.692	-8.334	519.200	119.200	+30.259		993.41280		323.529228
								2095.787822		1,703.651467
								454.630008		846.766363
								392.136355		392.136355
										$\frac{1}{2} = 196.0681775$
K181	-152 310.810	-152,300 10.810	-6.322	488.039	-37,400 88.039	-27.492		556.582558		297.188526
K182	310.263	10.263	+9.857	460.848	60.848	-26.999		599.778736		277.090737
6	320.667	20.667	+9.826	461.040	61.040	+9.142		599.779040		188.937717
I	320.089	20.089	-4.082	469.990	69.990	+27.300		785.699180		548.429700
5	316.585	16.585	-9.279	488.340	88.340	+18.049		819.706860		299.342665
								1,661.988598		1,199.557776
								574.279257		1,036.710079
								462.430822		462.430822

$\frac{1}{2} = 231.215411$

面積計算書

工
区

ω

ブ
ロ
ック

ウ
サ

計
算
者



精
算
者



備
考

青江911-1(1)
道路(4)

点	①	②	③	④	⑤	⑥	③ × ⑤		② × ⑥	
	X	X-(定数)	X _{n-1} -X _{n+1}	Y	Y-(定数)	Y _{n-1} -Y _{n+1}	+	-	+	-
K.176'	-152 304.503	-152,300 4.503	-5.185	-37 551.609	-37,520 31.609	-0.807	163.892665			3.633921
K.176	304.225	4.225	+3.301	525.106	5.106	-26.010		16.854906	109.892250	
K.177	307.804	7.804	+5.185	525.599	5.599	+0.807		22.030815		6.297828
1	309.410	9.410	-3.301	525.913	5.913	+26.010	19.618813			244.754100
							183.411478	45.885721	113.576171	751.051928
							137.525757			137.525757
										$\frac{1}{2} = 68.7628785$
K.177	-152 307.804	-152,307 0.804	-7.448	-37 525.599	-37,520 5.599	-2.799	8.107357			2.250396
10	307.962	0.962	+2.046	523.114	3.114	-1.991		6.371244	1.915342	
Z	309.850	2.850	+1.448	523.608	3.608	+2.799		5.224384		7.977150
1	309.410	2.410	-2.046	525.913	5.913	+1.991	12.097998			4.798310
							20.205350	11.595678	4.165938	12.775460
							8.609722			8.609722
										$\frac{1}{2} = 4.304861$

面積計算書

工区

ウ

ブロック

28

計算者



精算者



備考

水路
道路(口)

点	①	②	③	④	⑤	⑥	③ ×	⑤	② ×	⑥
	X	X-(定数)	X _{n-1} -X _{n+1}	Y	Y-(定数)	Y _{n-1} -Y _{n+1}	+	-	+	-
10	⁻¹⁵² 307.962	^{-152,300} 7.962	-1.727	⁻³⁷ 523.114	^{-37,570} 3.114	-3.013	5.377878		23.989506	
11	308.123	8.123	+2.355	520.595	0.595	-1.950		1.401725	15.839850	
3	310.317	10.317	+1.727	521.164	1.164	+3.013		2.010228		31.085121
2	309.850	9.850	-2.355	523.608	3.608	+1.950	8.496840			19.207570
							13.874718	3.411453	39.829356	50.292621
							10.463265			10.463265
									$\frac{1}{2} = 5.2316325$	
11	⁻¹⁵² 308.123	^{-152,300} 8.123	-2.066	⁻³⁷ 520.595	^{-37,570} 10.595	-2.565	21.889270		20.835495	
12	308.251	8.251	+2.569	518.599	8.599	-1.395		22.090831	11.510145	
4	310.692	10.692	+2.066	519.200	9.200	+2.565		1.900720		21.424980
3	310.317	10.317	-2.569	521.164	11.164	+1.395	28.680316			14.397215
							50.569586	41.098031	32.345640	41.817195
							9.471555			9.471555
									$\frac{1}{2} = 4.7357775$	

