

**BLOCK NO. 39**

**街 区 計 算**

街区略図

工区

3

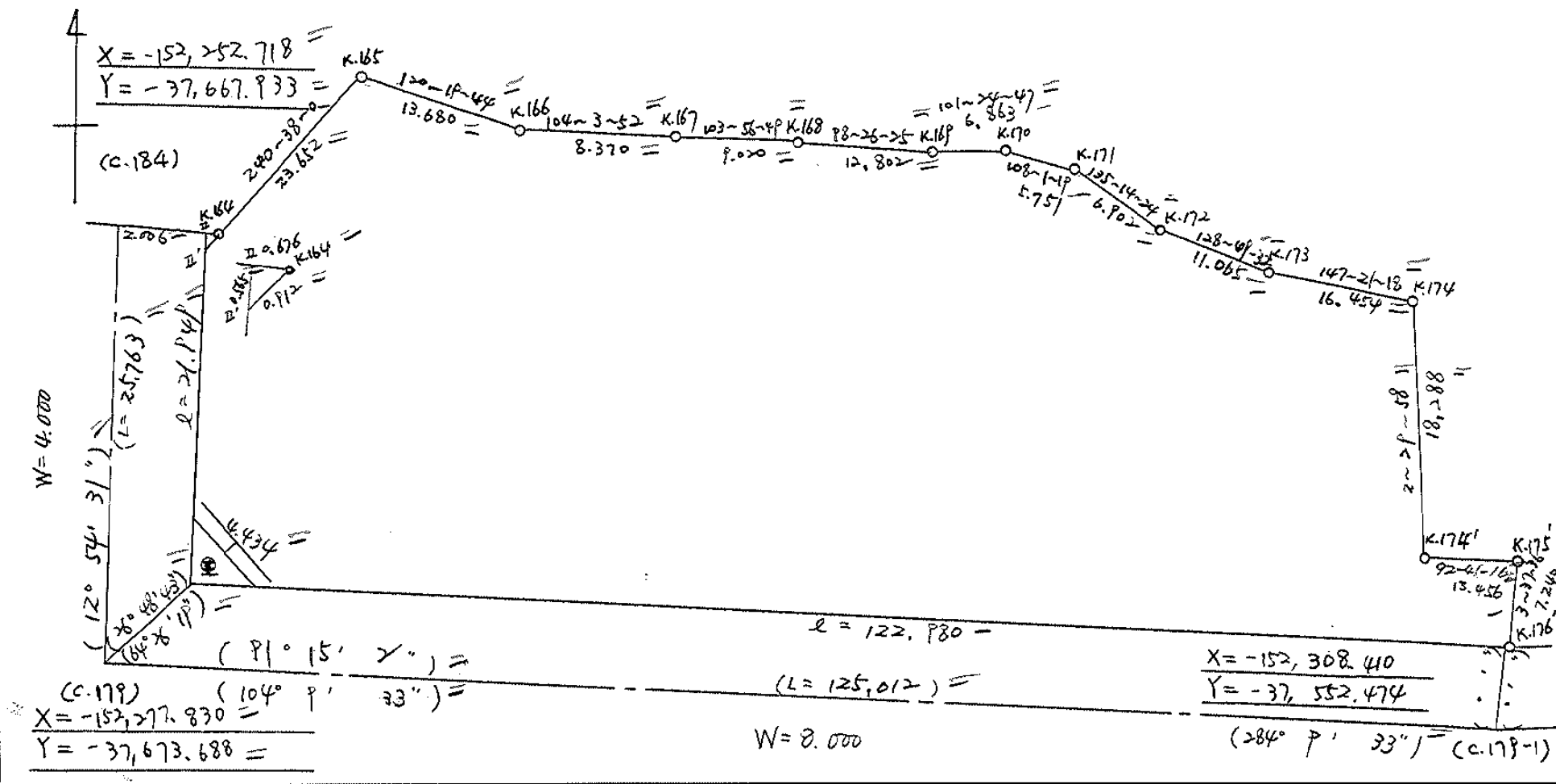
ブロック

39

記入者



点検者



# 面積計算書

工  
区

ブ  
ロ  
ック

計  
算  
者



精  
算  
者



備  
考

全  
体

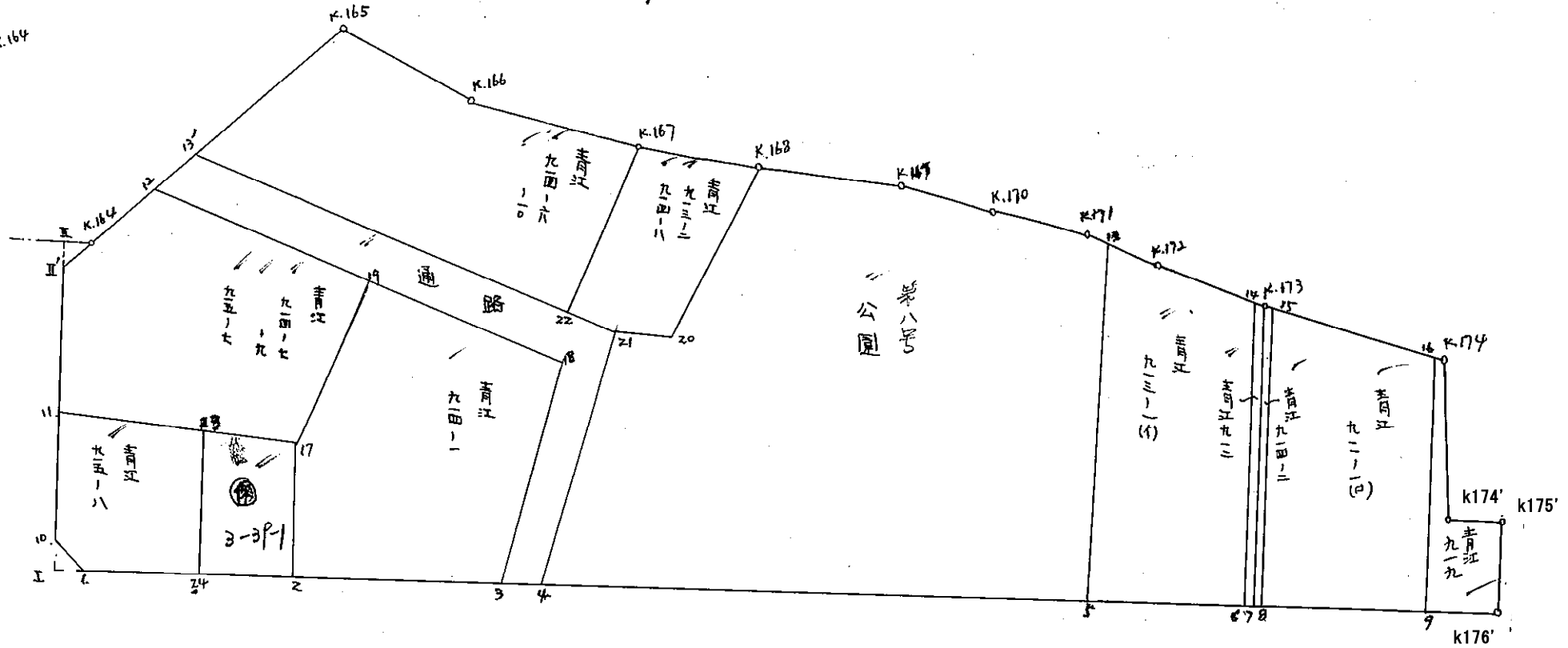
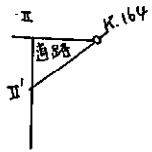
491

点	①	②	③	④	⑤	⑥	③ × ⑤		② × ⑥	
	X	X-(定数)	X <sub>n-1</sub> -X <sub>n+1</sub>	Y	Y-(定数)	Y <sub>n-1</sub> -Y <sub>n+1</sub>	+	-	+	-
I	-152,274.420	-152.200 74.420	-51.478	-37,670.844	-37.500 170.854	+114.342	8795.222212			8509.331640
II	-152,253.025	53.025	-21.291	-37,665.951	165.951	-5.572	3533.262741			295.455300
K.164	-152,253.129	53.129	-11.495	-37,664.282	165.282	-21.282	1899.916590			1130.691378
K.165	-152,241.530	41.530	-4.691	-37,644.669	144.669	-32.421	678.642279			1346.444130
K.166	-152,248.438	48.438	+3.942	-37,632.861	132.861	-19.927	1188.043062			965.224026
K.167	-152,250.472	50.472	+4.208	-37,624.742	124.742	-16.873	524.914336			851.614056
K.168	-152,252.646	52.646	+4.053	-37,615.988	115.988	-21.617	470.099364			1127.519382
K.169	-152,254.525	54.525	+3.237	-37,603.325	103.325	-19.390	334.463025			1057.239750
K.170	-152,255.883	55.883	+3.137	-37,596.598	96.598	-12.196	303.027926			681.549068
K.171	-152,257.662	57.662	+6.680	-37,591.129	91.129	-10.329	608.741720			595.590798
K.172	-152,262.563	62.563	+11.838	-37,586.269	86.269	-13.480	1021.252422			843.349240
K.173	-152,269.500	69.500	+15.813	-37,577.649	77.649	-22.475	1227.862037			1562.012500
K.174	-152,278.376	78.376	+27.146	-37,563.794	63.794	-13.057	1731.751924			1023.355432
K.174'	-152,296.646	96.646	+18.901	-37,544.592	64.592	-12.643	1220.853392			1221.895378
K.175	-152,297.277	97.277	+7.857	-37,551.151	51.151	-12.983	401.893607			1262.947291
K.176	-152,304.503	104.503	-22.857	-37,551.609	51.609	+119.703	1179.626913			12509.322609



# 算計地画

BN039





面積計算書						工区	ブロック	計算者	精算者	備考
						3	39			青いPIK-2 青い711-1(D)
点	①	②	③	④	⑤	⑥	③ × ⑤	② × ⑥		
	X	X-(定数)	X <sub>n-1</sub> -X <sub>n+1</sub>	Y	Y-(定数)	Y <sub>n-1</sub> -Y <sub>n+1</sub>	+ -	+ -		
K.173	-152,269.500	$\frac{-152.200}{69.500}$	-26.349	-37,577.649	$\frac{-37.500}{77.649}$	-7.304	2045.973501	507.628000		
15	-152,269.899	69.899	+26.920	-37,577.026	77.026	+6.002	2073.539920	419.533798		
8	-152,276.420	96.420	+26.349	-37,583.651	83.651	+7.304	2204.120199	704.251680		
7	-152,276.248	96.248	-26.920	-37,586.330	84.330	-6.002	2270.163600	577.680496		
							4316.137101	1025.308486		
							38.476982	38.476982		
							$\frac{1}{2} 19.238491$			
15	-152,269.899	$\frac{-152.200}{69.899}$	-18.432	-37,577.026	$\frac{-37.500}{77.026}$	-19.252	1419.743232	1345.695548		
16	-152,277.988	77.988	+31.076	-37,564.399	64.399	-11.430	2001.263324	891.402840		
9	-152,300.975	100.975	+18.432	-37,564.596	65.596	+19.252	1209.065472	1943.970700		
8	-152,276.420	96.420	-31.076	-37,583.651	83.651	+11.430	2599.538476	1102.080600		
							4019.281708	3210.328796		
							2237.098388	3046.051300		
							808.952912	808.952912		
							$\frac{1}{2} = 404.476456$			



面積計算書		工区	ブロック	計算者	精算者	備考		
		3	39			音レ P13-1(1) 音レ P12		
点	①	②	③	④	⑤	⑥	③ × ⑤	② × ⑥
	X	X-(定数)	X <sub>n-1</sub> -X <sub>n+1</sub>	Y	Y-(定数)	Y <sub>n-1</sub> -Y <sub>n+1</sub>	+ -	+ -
13	-152,219.829	-152.200 59.829	-30.421	-37,588.780	-37.500 88.980	-11.003	2706.860580	658.298487
K.172	-152,262.563	62.563	+9.188	-37,526.269	86.269	-10.732	792.639572	671.426116
14	-152,269.017	69.017	+33.514	-37,578.248	78.248	-1.260	2622.403472	86.961420
6	-152,296.077	96.077	+23.967	-37,525.029	85.009	+19.024	2037.410703	1827.768848
5	-152,292.984	92.984	-36.248	-37,597.272	97.272	+3.971	3525.915456	369.239464
							6232.776036	5452.453741
							780.322289	1416.686223
								2197.008312
								780.322289
							1/2 = 390.1611445	
14	-152,269.017	-152.200 69.017	-26.577	-37,578.248	-37.500 78.248	-7.360	2079.397098	507.965120
K.173	-152,269.500	69.500	+27.231	-37,577.649	77.649	+6.082	2114.459919	422.699000
7	-152,296.248	96.248	+26.577	-37,584.330	84.330	+7.360	2241.238410	708.885280
6	-152,296.077	96.077	-27.231	-37,585.009	85.009	-6.082	2314.880079	584.340314
							4394.477175	4355.698329
							38.778846	1092.305434
								1131.084280
								38.778846
							1/2 = 19.389423	



面積計算書						工区	ブロック	計算者	精算者	備考	備考
						3	39			青V P14-7 P14-7	青V P14-1
点	①	②	③	④	⑤	⑥	③	⑤	②	⑥	
	X	X-(定数)	X <sub>n-1</sub> -X <sub>n+1</sub>	Y	Y-(定数)	Y <sub>n-1</sub> -Y <sub>n+1</sub>	+	-	+	-	
11	-152,266.897	$\frac{-152.200}{66.897}$	$\frac{+19.177}{-37.667.130}$	$\frac{-37.600}{69.130}$	$\frac{-10.914}{-22.828}$	1325.706010			730.113858		
17	-152,272.753	$\frac{72.753}{-6.680}$	$\frac{-37.654.163}{55.163}$	$\frac{-22.828}{368.488840}$					1660.805484		
1P	-152,260.217	$\frac{60.217}{-22.420}$	$\frac{-37.646.302}{46.302}$	$\frac{+5.151}{1038.090840}$						310.177767	
12	-152,250.333	$\frac{50.333}{-6.641}$	$\frac{-37.660.314}{60.314}$	$\frac{+19.775}{400.545274}$						995.335075	
I'	-152,253.576	$\frac{53.576}{+16.564}$	$\frac{-37.666.077}{66.077}$	$\frac{+8.816}{1094.499428}$						472.326016	
						1807.124954	2420.205438	2390.919342	1777.838858		
						613.080484	613.080484				
						$\frac{1}{2} = 306.540242$					
1P	-152,260.217	$\frac{-152.200}{60.217}$	$\frac{+4.917}{-37.646.302}$	$\frac{-37.600}{46.302}$	$\frac{+19.661}{227.666934}$				1183.926437		
17	-152,272.753	$\frac{72.753}{+17.874}$	$\frac{-37.654.163}{55.163}$	$\frac{+10.001}{985.983462}$					727.602753		
2	-152,272.091	$\frac{78.091}{+8.891}$	$\frac{-37.656.303}{56.303}$	$\frac{-12.946}{500.589973}$					1010.966086		
3	-152,281.644	$\frac{81.644}{-10.255}$	$\frac{-37.642.217}{42.217}$	$\frac{-20.801}{432.935335}$					1698.276844		
18	-152,267.826	$\frac{67.836}{-21.427}$	$\frac{-37.634.402}{35.502}$	$\frac{+4.085}{760.701354}$					277.110060		
						1193.636689	1714.240367	2709.242930	2188.639250		
						520.603680	520.603680				
						$\frac{1}{3} = 260.301840$					

面積計算書														
	工区	3	ブロック	29	計算者		精算者		備考	香江 715-2	俵 3-3P-1			
点	①	②	③	④	⑤	⑥	③	×	⑤	②	×	⑥		
	X	X-(定数)	X <sub>n-1</sub> -X <sub>n+1</sub>	Y	Y-(定数)	Y <sub>n-1</sub> -Y <sub>n+1</sub>	+		-	+		-		
11	-152,266.297	-152,260 6.297	-1.479	-37,669.130	-37,650 19.120	-11.041	28.293	270		76.149	777			
23	-152,270.991	10.991	+10.042	-37,659.366	9.366	-8.263			94.053	372	90.818	633		
24	-152,276.939	16.939	+3.910	-37,660.867	10.867	+9.549			42.576	906		161.750	511	
1	-152,274.909	14.909	-4.469	-37,660.915	10.915	+9.540	84.531	135				142.231	260	
10	-152,272.420	12.420	-8.012	-37,670.407	20.407	+0.215	163.500	284				2.681	050	
							276.325	289	136.630	278	166.960	410	306.663	421
							129.695	011				139.695	011	
											Y <sub>2</sub> = 67,847	505		
23	-152,270.991	-152,270 0.991	-4.186	-37,659.366	-37,650 9.366	-5.704	39.206	076			5.652	664		
17	-152,272.753	2.753	+7.100	-37,655.163	5.163	-3.063	26.657	300		8.432	479			
2	-152,278.091	8.091	+4.186	-37,656.303	6.303	+5.704	26.384	358				46.151	064	
24	-152,276.939	6.939	-7.100	-37,660.867	10.867	+3.063	77.155	200				21.254	157	
							116.361	776	63.041	658	14.085	103	67.405	221
							53.320	118				83.320	118	
											Y <sub>2</sub> = 26.660	059		

面積計算書						工区	ブロック	計算者	精算者	備考	青紙 P14-6	青紙 P13-2
						3	39				-10	P14-8
点	①	②	③	④	⑤	⑥	③ × ⑤		② × ⑥			
	X	X-(定数)	X <sub>n-1</sub> -X <sub>n+1</sub>	Y	Y-(定数)	Y <sub>n-1</sub> -Y <sub>n+1</sub>	+	-	+	-		
13'	-152, 248.165	-152.200 49.165	-22.385	-37, 646.460	-37.600 56.460	+10.535	1263.857100			507.418275		
K.164	-152, 241.530	41.530	+0.273	-37, 644.669	44.669	-23.599		12.194637		980.066470		
K.166	-152, 248.438	48.438	+8.942	-37, 632.861	32.861	-19.927		293.843062		965.224026		
K.167	-152, 250.472	50.472	+15.477	-37, 624.742	24.742	+1.273		382.931934		64.250856		
22	-152, 263.915	63.915	-2.307	-37, 634.134	34.134	+31.718	78.747138			2027.255970		
							1342.604238	688.969633	1945.290496	2598.925101		
							653.634605			653.634605		
							1/2=326.8173025					
K.167	-152, 250.472	-152.200 50.472	-11.269	-37, 624.742	-37.600 24.742	-18.146	278.817598			915.864912		
K.168	-152, 252.646	52.646	+18.777	-37, 615.988	15.988	-1.819		300.206676		95.763074		
20	-152, 269.249	69.249	+13.869	-37, 622.923	22.923	+14.460		317.919087		1001.340540		
21	-152, 266.515	66.515	-5.334	-37, 630.448	30.448	+11.211	162.409632			745.699665		
22	-152, 263.915	63.915	-16.043	-37, 634.134	34.134	-5.706	547.611762			364.698990		
							988.838992	618.725763	1376.326976	1747.040205		
							370.713229			370.713229		
							1/2=185.3566145					

面積計算書						工区	ブロック	計算者	精算者	備考	通路	隅印
		3		39								
点	①	②	③	④	⑤	⑥	③ × ⑤		② × ⑥			
	X	X-(定数)	X <sub>n-1</sub> -X <sub>n+1</sub>	Y	Y-(定数)	Y <sub>n-1</sub> -Y <sub>n+1</sub>	+	-	+	-		
12	-152,250.333	-152.200 50.333	-19.671	-37.660.314	-37.600 60.314	+20.958	1186.436694					1054.879014
13'	-152,248.165	48.165	+13.582	-37,646.460	56.460	-26.180		766.839720	1260.959700			
22	-152,263.915	63.915	+18.350	-37,634.134	34.134	-26.012		626.358900	1662.556980			
21	-152,266.515	66.515	+18.721	-37,630.648	30.448	+4.153		570.017008				276.236795
4	-152,282.636	82.636	+15.129	-37,638.287	38.287	+11.769		579.244023				972.543084
3	-152,281.644	81.644	-14.800	-37,642.217	42.217	-2.785	624.811600			227.378540		
18	-152,267.836	67.836	-31.311	-37,634.502	35.502	+18.097	1111.603122					1227.628092
							2922.851416	2542.459651	13150.895220			3531286985
							380.391765					380.391765
							1/2=190.1958825					
I'	-152,243.576	-152.200 53.576	-0.104	-37,666.077	-37.600 66.077	+0.669	6.872008					35.842344
II	-152,243.025	53.025	-0.447	-37,664.941	65.951	-0.795	29.480097			42.154875		
K.164	-152,243.129	53.129	+0.551	-37,664.282	65.282	+0.126		35.970382				6.694254
							36.352105	35.970382	42.154875			42.536598
							0.381723					0.381723
							1/2=0.1908615					

計年  
月  
算日

計  
算  
者



檢  
查  
者



B.NO. 39

各筆面積計算書

地番	算式	隅切	地積	摘要
	青江 919		95.38	-
	青江 911の10)		404.47	-
	青江 914の2		19.23	-
	青江 912		19.38	-
	青江 913の1(1)		390.16	-
	公 園 (83)		1,230.36	-
	青江 914の1		260.30	-
	未指定地保 3-39-1		26.66	-
	青江 915の8		69.84	-
	青江 914の7, 914の9, 915の7		306.54	-
	青江 914の6, 914の10		326.81	-
	青江 913の2, 914の8.		185.35	-
	通 路		190.19	-
	計		3,524.67	-
	全 体		3,524.69	-
		差	-0.02	-
	換 地		2,077.46	
	未指定地		26.66	-
	公 園		1,230.36	-
	通 路		190.19	