

BLOCK NO. 52

街 区 計 算

街区略図

工区

ウ

ブロック

57

記入者

点検者

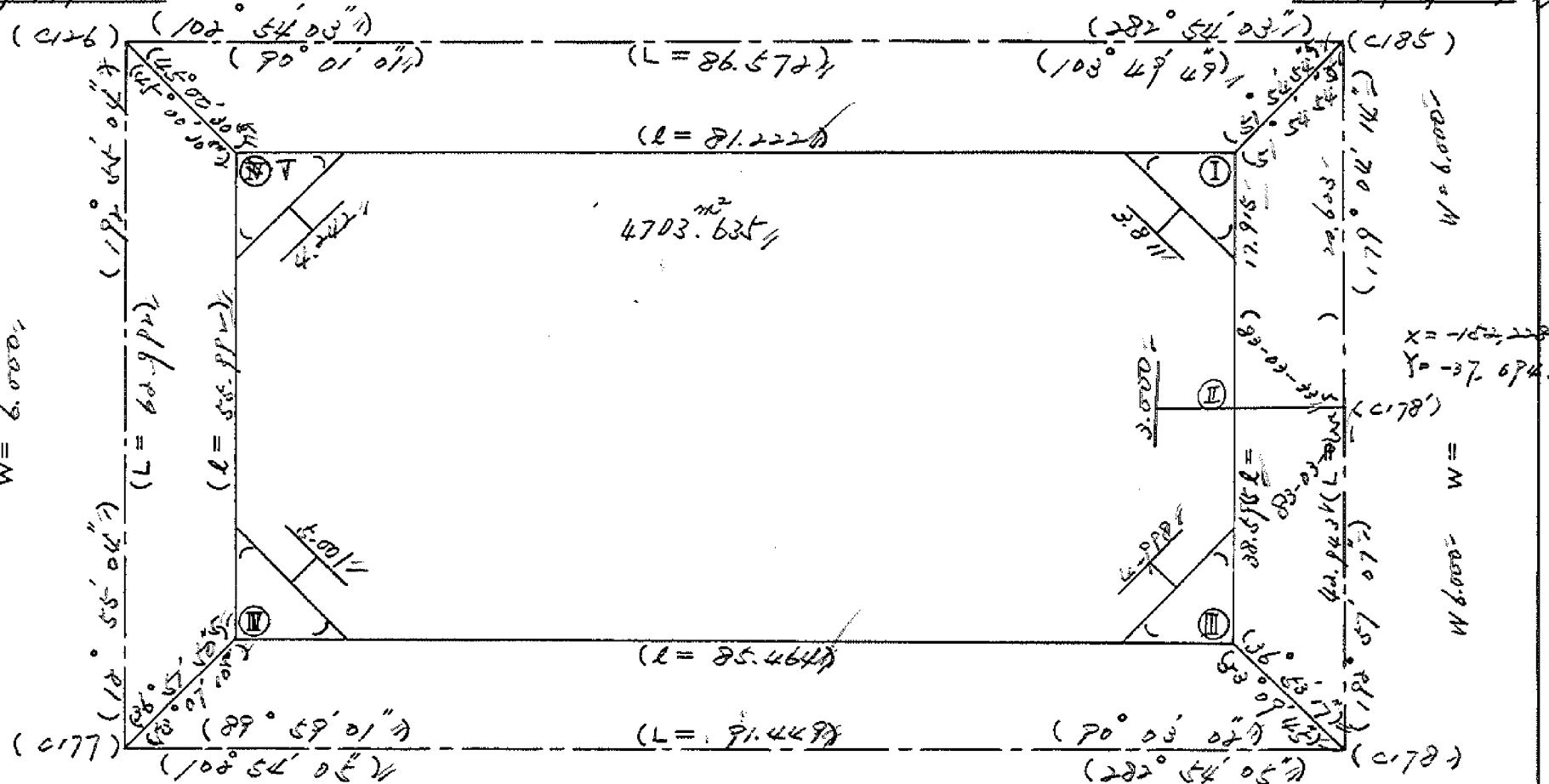
$X = -152,188.974$

$Y = -37,779.481$

$W = 6,000$

$X = -152,208.302$

$Y = -37,695.094$



$X = -152,250.972$

$Y = -37,793.583$

$W = 8,000$

$X = -152,270.790$

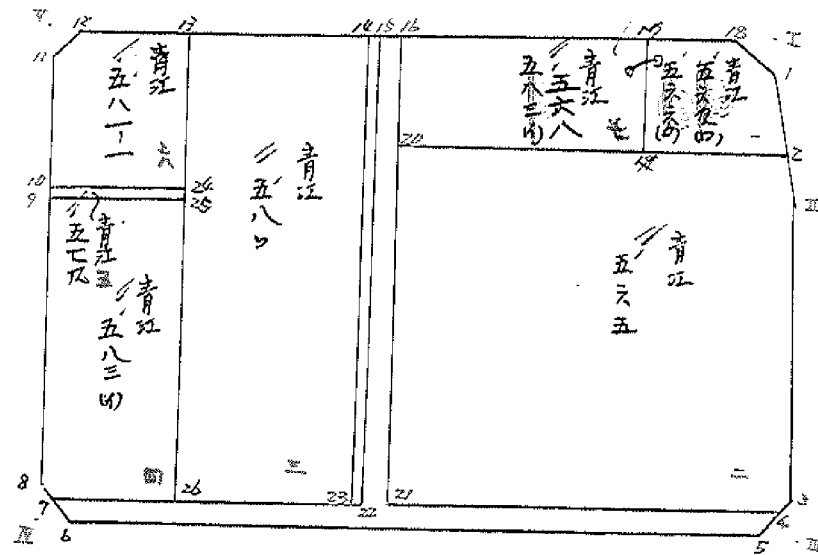
$Y = -37,704.409$

圖地計算

BNo ~~52~~ 52

11

合併となる



面積計算書		工区	ウ	ブロック	52	計測者	精算者	備考	1. 青江	568
点	①	②	③	④	⑤	⑥	③	⑤	②	⑥
	X	X-(定数)	X _{n-1} -X _{n+1}	Y	Y-(定数)	Y _{n-1} -Y _{n+1}	+	-	+	-
1	-152.213.701	-152,200 13.701	+13.906	-37.698.008	-37,600 98.008	-3.131			1362.899248	42.897831
2	-152.223.937	23.937	+6.851	-37.697.848	97.848	+14.563			670.356.648	348.594531
1P	-152.220.558	20.558	-15.405	-37.713.571	112.571	+11.858			1790.441755	243.705.616
17	-152.208.032	8.032	+10.521	-37.709.706	109.706	-11.592			1154.216826	93.106944
18	-152.210.031	10.031	+5.669	-37.700.979	100.979	-11.698			572.449951	117.342.638
									2944.658581	2605.705847
									253.347413	592.300147
									338.952734	338.952734
									1/2 = 169.476367	+370.03
										= 539.50702
2	-152.223.937	-152,200 23.937	+14.523	-37.697.848	-37,600 97.848	-42.900			1421.046504	1026.897300
II	-152.228.614	28.614	+39.365	-37.697.775	97.775	+7.916			3848.912875	226.508424
3	-152.263.302	63.302	+35.068	-37.705.764	105.764	+8.595			3708.931952	444.080690
4	-152.263.682	63.682	-9.559	-37.706.370	106.370	+43.984			1016.790830	2800.989088
21	-152.253.743	53.743	-49.591	-37.749.768	149.768	+34.305			7426.153068	1843.653615
20	-152.214.091	14.091	+29.806	-37.740.675	140.675	-51.900			4192.949050	731.322900
									12635.902948	8978.891331
									1758.220200	5415.231817
									3657.011617	3657.011617
									1/2 = 1828.5058085	

合筆あり

面積計算書		工区	町	ブロック	52	計測者	精算者	備考
								4.青江580 4.青江580(甲)
点	①	②	③	④	⑤	⑥	③ × ⑤	② × ⑥
	X	X-(定数)	X _{n-1} -X _{n+1}	Y	Y-(定数)	Y _{n-1} -Y _{n+1}	+	-
14	752.200.813	-152,100 100.813	+56.927	-37.741.228	-37,700 41.228	-8.935	2346.986356	900.764155
23	752.252.961	152.961	+47.367	-37.753.159	+3.159	+32.799	2517.982353	5016.967839
26	752.248.180	148.180	-56.927	-37.774.027	74.027	+8.935	4214.134029	1323.988300
13	752.196.034	96.034	-47.367	-37.762.094	62.094	-32.799	2944.206498	3149.819166
							7155.341527	4864.968709
							4050.503321	6340.956139
							2290.372818	2290.372818
								1/2 = 1145.186209
25	752.215.223	-152,200 15.223	+36.424	-37.766.095	-37,700 66.424	-7.601	2421.649640	115.710022
26	752.248.180	48.180	+29.595	-37.774.027	74.027	+22.212	2190.829065	1070.174160
7	752.244.818	44.818	-3.961	-37.788.697	88.697	+15.046	2951.378817	674.331628
8	752.244.219	44.219	-33.062	-37.789.073	89.073	-7.069	2944.931526	312.584111
9	752.211.756	11.756	+28.996	-37.781.628	81.628	-22.588	2366.885488	265.544528
							5663.125831	4612.478705
							693.838682	1746.505788
							1250.667126	1050.667126
								1/2 = 525.333563

面積計算書		工区	ウ	ブロック	52	計測者	精算者	備考	5. 青江579	6. 青江581-1
点	①	②	③	④	⑤	⑥	③ ×	⑤	② ×	⑥
	X	X-(定数)	X _{n-1} -X _{n+1}	Y	Y-(定数)	Y _{n-1} -Y _{n+1}	+	-	+	-
22	-152.214.443	-152,200 14.443	+4.247	-152.766.307	-152,700 66.307	-14.964		281.605829	216.125052	
25	-152.215.223	15.223	-2.687	-152.766.485	66.485	+15.321	178.645195			233.231583
9	-152.211.256	11.256	-4.247	-37.781.628	81.628	+14.964	346.6741164			175.916784
10	-152.210.976	10.976	+2.687	-37.781.449	81.449	-15.321		218.853463	168.163296	
							525.319311	500.459292	384.288348	409.148367
							24.860019			24.860019
									1/2 = 12.4300095	
13	-152.196.034	-152,100 96.034	+21.205	-37.762.094	-37,700 62.094	-7.996		1316.703270	767.887864	
24	-152.214.443	114.443	+14.942	-37.766.307	66.307	+19.355		990.759194		2215.044265
10	-152.210.976	110.976	-18.951	-37.781.449	81.449	+11.591	1543.539999			1286.322816
11	-152.195.492	95.492	-17.738	-37.777.898	77.898	-7.146	1381.754724		682.385832	
12	-152.193.238	93.238	+0.542	-37.774.303	74.303	-15.804		40.272226	1473.433252	
							2925.294723	2347.734670	2923.807048	3501.367081
							577.560033			577.560033
									1/2 = 288.7800165	

面積計算書						工区	ブロック	52	計測者	精算者	備考	7.青江593(4) 死上付
点	① X	② X-(定数)	③ X _{n-1} -X _{n+1}	④ Y	⑤ Y-(定数)	⑥ Y _{n-1} -Y _{n+1}	③ × ⑤ +	⑤ -	② × ⑥ +	⑥ -		
17	-152.208.032	-152,200 8.032	+18.958	-37.709.706	-37,700 9.706	-25.245		184.006348	202.767840			
19	-152.220.552	20.552	+6.059	-37.712.571	12.571	+30.969		76.167689		636.474888		
20	-152.216.091	14.091	-18.958	-37.760.675	40.675	+25.245	771.116650			355.727295		
16	-152.201.594	1.594	-6.059	-37.737.816	37.816	-30.969	229.127144		49.364586			
							1000.243794	260.174037	252.132426	992.202183		
							740.069757			740.069757		
							合筆あり		1/2 = (370.0348785) 合筆と等			
15	-152.201.036	-152,200 1.036	+42.371	-37.740.253	-37,700 40.253	+10.957		2100.089863		11.351452		
22	-152.253.184	43.184	+51.925	-37.752.185	52.185	+12.906		2709.706125		686.392704		
23	-152.252.961	42.961	-42.371	-37.253.159	43.159	-10.957	2783.989889		580.293677			
14	-152.200.813	0.813	-51.925	-37.741.228	41.228	-12.906	2140.763900		10.492578			
							4924.753889	4017.795988	590.786255	697.744156		
							106.957901			106.957901		
									1/2 = 43.4789505			

面積計算書						工区	ブロック	計算者	精算者	備考
				52						水路
点	①	②	③	④	⑤	⑥	③	⑤	②	⑥
	X	X-(定数)	X _{n-1} -X _{n+1}	Y	Y-(定数)	Y _{n-1} -Y _{n+1}	+	-	+	-
16	152.201.596	-152,200 1.596	+ 52.707	37.737.816	-37,700 37.816	+ 9.495			1993.167917	15.135030
21	152.253.763	+ 3.743	+ 62.088	37.769.768	49.748	- 31.446			2088.753.224	1690.002378
4	152.263.682	63.682	+ 11.812	37.706.370	6.370	- 40.387			75.242440	2571.924934
5	152.265.555	65.555	- 15.869	37.709.361	9.361	+ 20.449	148.549709			5273.834195
6	152.267.813	67.813	- 20.737	37.786.819	86.819	+ 79.336	180.365603			3793.292168
7	152.244.818	44.818	+ 5.371	37.788.697	88.697	- 34.634		476.391587	1552.226612	
22	152.253.184	+ 3.184	- 43.782	37.752.185	52.185	- 48.444	2284.763670		2576.445696	
15	152.201.036	1.036	- 51.590	37.760.253	40.253	- 14.369	2076.652270		14.896284	
							6310.331252	5633.555763	8404.485904	9082.261393
							676.775489		676.775489	
							1/2 = 338.3877445			

面積計算書						工区	3	ブロック	52	計測者	精算者	備考	陽切 1. 2
点	①	②	③	④	⑤	⑥	③ × ⑤	② × ⑥					
	X	X-(定数)	X _{n-1} -X _{n+1}	Y	Y-(定数)	Y _{n-1} -Y _{n+1}	+	-	+	-			
I	-152,210.701	-152,200 10.701	+ 3.670	-37,698.054	-37,600 98.054	- 2.971		359.861850	21.792671				
1	-152,213.701	13.701	- 0.670	-37,698.008	98.008	+ 2.924	64.665360			40.061724			
18	-152,210.031	10.031	- 3.000	-37,700.979	100.979	+ 0.047	302.937000			2.471457			
							268.602260	359.861850	21.792671	40.433181			
							8.740510			8.740510			
									1/2 = 4.370255				
3	-152,263.302	-152,260 3.302	+ 0.670	-37,705.714	-37,700 5.714	- 2.924		3.861880	9.155048				
III	-152,266.225	6.225	+ 2.253	-37,706.437	6.437	+ 3.497	14.402461			22.391325			
5	-152,265.555	5.555	- 2.923	-37,709.361	9.361	- 0.673	27.362203			3.738515			
							27.362203	18.364441	13.393563	22.391325			
							8.997762			8.997762			
									1/2 = 4.498881				

面積計算書		工区	ω	ブロック	52	計測者	精算者	備考	陽切J.4	
点	①	②	③	④	⑤	⑥	③ ×	⑤	② ×	⑥
	X	X-(定数)	X _{n-1} -X _{n+1}	Y	Y-(定数)	Y _{n-1} -Y _{n+1}	+	-	+	-
6	-152.247.813	-152,200 47.813	+2.924	-37.786.819	-37,700 86.819	+0.671		213.858.756		32.082.523
II	-152.267.143	47.143	-3.594	-37.789.744	89.744	+2.254	322.439.936			106.260.322
8	-152.244.219	44.219	+0.670	-37.789.073	89.073	-2.925		59.678.910	129.340.575	
							322.539.736	313.537.666	127.340.575	136.342.865
							9.002.270			9.002.270
							$\frac{1}{2} = 4.501.135$			
11	-152.145.492	-152,100 93.492	+0.670	-37.777.898	-37,700 77.898	+2.924		52.191.660		279.218.608
V	-152.192.568	92.568	-2.254	-37.777.227	77.227	-3.595	174.069.658		332.781.960	
12	-152.193.238	93.238	+2.924	-37.774.303	74.303	+0.671		217.261.972		62.462.698
							226.261.318	217.261.972	332.781.960	341.781.306
							8.999.346			8.999.346
							$\frac{1}{2} = 4.499.673$			

計年月
算日

計算者



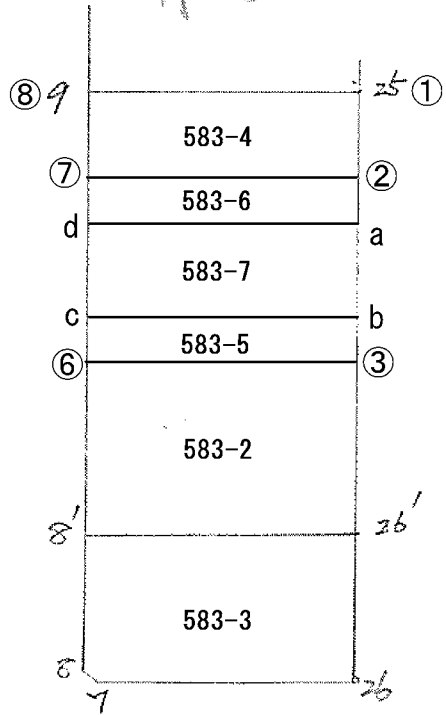
検査者



B.NO. ~~57~~ 57 各筆面積計算書

地番	算式	隅切	地積	摘要
	青江 567(4) 青江 568(4) 568		539.50 169.67	583(4)と合併換地組数
	青江 565		1,828.50	
	青江 580		1,145.18	
	青江 583(4)		525.33	
	青江 579		12.43	
	青江 581(4)		288.78	
	青江 582(4)		370.00	
	管理道		53.47	
	水路		338.38	
	計		4,731.57	
	全体		4,731.60	
		差	- 0.03	
	換地		4,338.72	
	管理道		53.47	
	水路		338.38	

第 3 页



面積計算書

I
区

ブ
ロ
ック

計
算
者

精
算
者

備
考

点	①	②	③	④	⑤	⑥	③ × ⑤		② × ⑥	
	X	X - (定数)	X _{n-1} - X _n	Y	Y - (定数)	Y _{n-1} - Y _n	+	-	+	-
8'	236.421		- 4.335	- 787.285		- 16.944	378.380495		617.117424	
26'	239.884		+ 11.759	- 772.129		- 15.156 13.258	848.164911		528.782092	
26	248.180		+ 4.934	- 774.027		+ 16.568	365.24218		798.246240	
7	244.818		- 3.961	- 788.697		+ 15.046	351.328817		674.371628	
8	244.219		- 8.399	- 789.093		- 1.412	747.745981		62.437228	
							1479.655293	1213.914129	1208.736724	1472.599868
							264.241144		264.241144	
									264.241144 × 1/2 = 132.120572	
9	211.756		- 21.198	- 781.628		- 20.800	1730.350744		244.524800	
25	215.223		+ 28.128	- 766.485		- 9.499	1870.090080		124.603297	
26'	239.884		+ 21.198	- 772.129		+ 20.800	1528.990542		829.587200	
8'	236.421		- 28.128	- 787.285		+ 9.499	2455.152480		348.969079	
							4185.502824	3399.080622	389.128077	1195.550297
							786.422202		786.422202	
									786.422202 × 1/2 = 393.211101	

分筆あり

