

**BLOCK NO. 30**

**街 区 計 算**

街区略図

工区

ω

ブロック

30

記入者

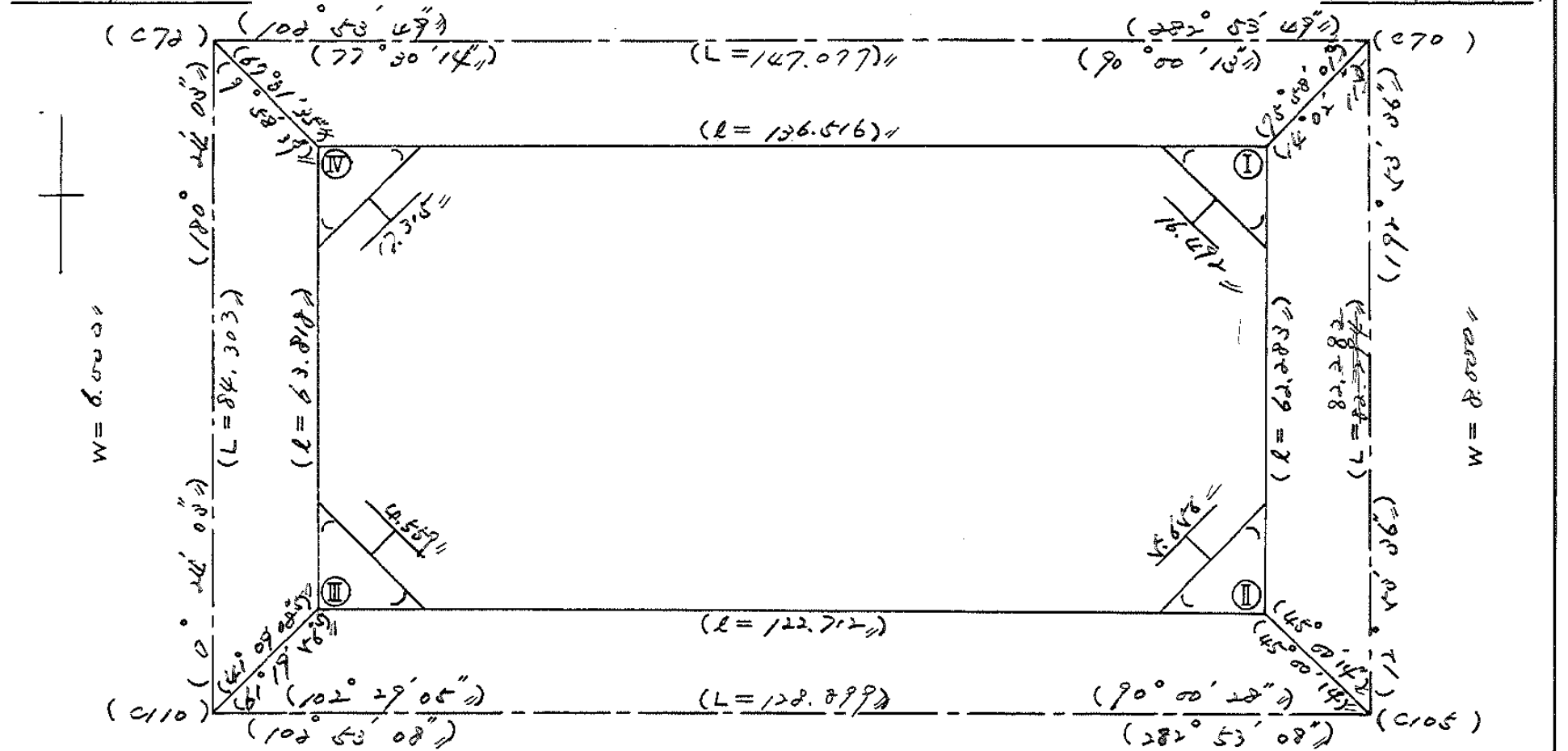
点検者



$X = -152,426.342''$   
 $Y = -37,371.373''$

$W = 22,000''$

$X = -152,459.182''$   
 $Y = -37,227.951''$



$X = -152,510.645''$   
 $Y = -37,371.963''$

$W = 8,000''$

$X = -152,539.390''$   
 $Y = -37,246.311''$

# 面積計算書

工  
区

ω

ブ  
ロ  
ック

~~30~~ 30

計  
算  
者

精  
算  
者

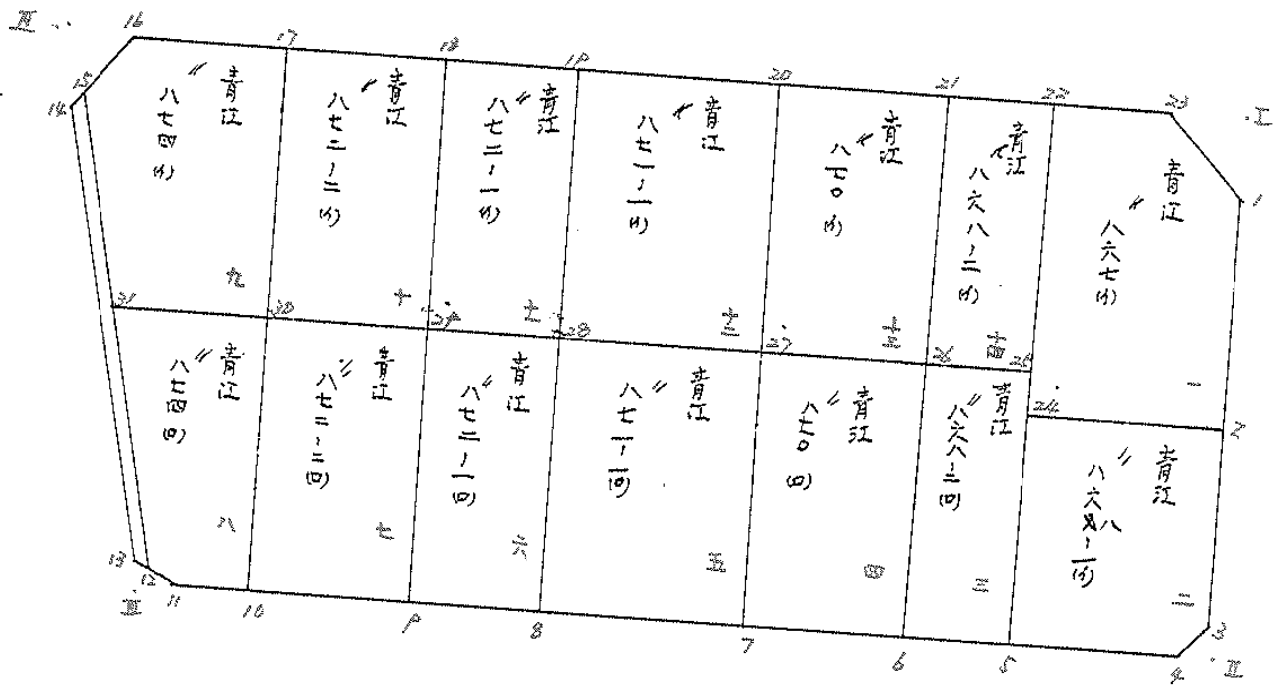
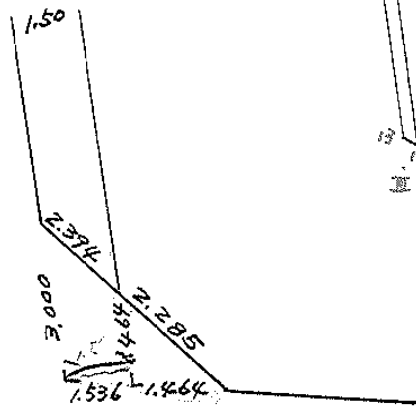
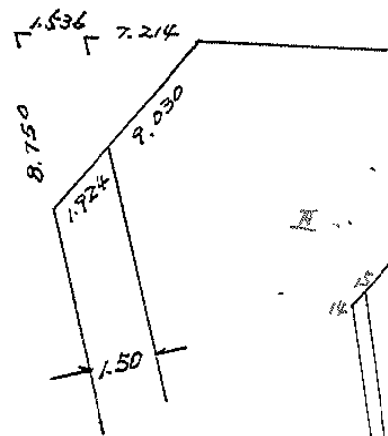


備  
考

合  
計

点	①	②	③	④	⑤	⑥	③ × ⑤		② × ⑥	
	X	X - (定数)	X <sub>n-1</sub> - X <sub>n+1</sub>	Y	Y - (定数)	Y <sub>n-1</sub> - Y <sub>n+1</sub>	+	-	+	-
I	-152,473.886	-73.886	+91.183	-37,235.420	-35.420	-119.175		3229.701250	8806.864050	
II	-152,534.599	-134.599	+33.347	-37,249.317	-49.317	+133.519		1644.573999	17976.523881	
III	-152,507.233	-107.233	-91.183	-37,362.739	-168.939	+119.175	15404.864837		12779.492775	
IV	-152,443.416	43.416	-33.347	-37,368.492	-168.492	-133.519	5618.702724	5796.860904		
							21023.067561	4874.275859	14602.224954	30751.016656
							16148.791702			16148.791702
							1/2 = 8074.395851			
							8,074.39 - (38.28 + 4.50 + 4.39 + 37.37) = 7,989.85			

# 圖地計算



面積計算書						工区	ブロック	計算者	精算者	備考	1.青江867(4)	2.青江866-1(4)
点	①	②	③	④	⑤	⑥	③ × ⑤		② × ⑥			
	X	X-(定数)	X <sub>n-1</sub> -X <sub>n+1</sub>	Y	Y-(定数)	Y <sub>n-1</sub> -Y <sub>n+1</sub>	+	-	+	-		
		-152.400			-37.200							
1	-152.492.415	82.414	+36.639	-37.237.372	37.372	-0.589		1369.272708		49.541846		
2	-152.508.572	108.572	+21.217	-37.243.360	43.360	+27.606		919.969120			2997.238632	
24	-152.503.631	103.631	-39.641	-37.264.978	64.978	+13.677	2575.792898				1417.361187	
22	-152.468.936	68.931	-31.698	-37.257.037	57.037	-21.029	1807.958826			1449.549999		
23	-152.471.933	71.933	+13.483	-37.243.949	43.949	-19.665		592.564367		1414.562445		
								4383.751724	2981.806195	2912.654290	4414.599819	
								1501.945529			1501.945529	
								1/2 = 750.9727645				
2	-152.508.572	8.572	+28.043	-37.263.360	43.360	-16.330		1215.944480		139.980760		
3	-152.531.674	31.674	+25.358	-37.248.648	48.648	+8.881		1233.615984			281.296794	
4	-152.533.930	33.930	-2.020	-37.252.241	52.241	+22.286	105.526820				736.163980	
5	-152.529.654	29.654	-30.299	-37.270.936	70.934	+12.737	2149.229266				377.702998	
24	-152.503.631	3.631	-21.082	-37.264.978	64.978	-27.574	1369.866196			100.121194		
								3124.622282	2449.560464	240.161954	1415.163772	
								1175.061818			1175.061818	
								1/2 = 587.530909				

面積計算書											工区	ブロック	棟	計算者	精算者	備考
											2	30	30	手	手	3.青江 868-2(10) 4.青江 870(10)
点	①	②	③	④	⑤	⑥	③ × ⑤	② × ⑥								
	X	X-(定数)	X <sub>n-1</sub> -X <sub>n+1</sub>	Y	Y-(定数)	Y <sub>n-1</sub> -Y <sub>n+1</sub>	+	-	+	-						
25	-152.499.175	-152.450 49.175	+ 33.158	37.263.958	-37250 13.958	- 4.726			462.819364	232.401050						
5	-152.529.654	79.654	+ 27.801	37.270.936	20.934	+ 18.678			521.986134	1487.797412						
6	-152.526.976	76.976	- 33.158	37.282.636	32.636	+ 4.726	1082.144488			363.788574						
26	-152.496.496	46.496	- 27.801	37.275.660	25.660	- 18.678	713.373660			868.452288						
							1795.518148	1044.805488	1100.853328	1851.565988						
							750.712650			750.712650						
										1/2 = 375.356325						
26	-152.496.496	-152.450 46.496	+ 34.821	37.275.660	-37250 25.660	- 11.993			893.506860	557.626528						
6	-152.526.976	76.976	+ 26.141	37.282.636	32.636	+ 25.943			853.127676	1996.998368						
7	-152.522.637	72.637	- 34.821	37.201.603	51.603	+ 11.993	1796.868063			271.135541						
27	-152.492.155	42.155	- 26.141	37.294.629	44.629	- 25.943	1166.646689			1093.627165						
							2963.514752	1746.644536	1651.253693	2868.123909						
							1216.870216			1216.870216						
										1/2 = 608.435108						

変更後の資料なし

面積計算書										工区	ブロック	計算者	精算者	備考
	①	②	③	④	⑤	⑥	③ × ⑤	② × ⑥						
点	X	X-(定数)	X <sub>n-1</sub> -X <sub>n+1</sub>	Y	Y-(定数)	Y <sub>n-1</sub> -Y <sub>n+1</sub>	+	-	+	-				
27	-152.492.155	-152450 42.155	+ 35.594	37.244.629	-37250 44.629	- 15.357	1588.524626	647.374335						
7	-152.522.637	72.637	+ 25.373	37.301.603	51.603	+ 29.306	1309.322919		2128.699927					
8	-152.517.528	67.528	- 35.594	37.323.925	73.935	+ 15.357	2631.642390		1037.027496					
28	-152.487.043	37.043	- 25.373	37.316.960	66.960	- 29.306	1698.976080	1085.582158						
							4330.618470	2897.847545	1732.96493	3165.727418				
							1432.770925		1432.770925					
								1/2 =	716.3854625					
28	-152.487.043	-152450 37.043	+ 33.923	37.316.960	-37300 16.960	- 8.043	575.334080	297.936849						
8	-152.517.528	67.528	+ 27.050	37.323.925	23.935	+ 21.993	647.441750		1485.143309					
9	-152.516.993	64.093	- 33.923	37.338.953	38.953	+ 8.043	1321.402619		515.499999					
29	-152.483.605	33.605	- 27.050	37.331.978	31.978	- 21.993	865.004900	729.074765						
							2186.407519	1222.725830	1037.011614	2000.643303				
							963.631689		963.631689					
								1/2 =	481.8158445					

変更後の資料なし



面積計算書		工区	ブロック	棟 号	計算者	精算者	備考	7. 青江 872-2(10)		8. 青江 874(10)		
点	①	②	③	④	⑤	⑥	③ × ⑤	② × ⑥	+	-	+	-
	X	X-(定数)	X <sub>n-1</sub> -X <sub>n+1</sub>	Y	Y-(定数)	Y <sub>n-1</sub> -Y <sub>n+1</sub>	+	-	+	-	+	-
		-152.470			-37.330							
2A	-152.483.105	13.605	+34.530	-37.331.978	1.978	-10.683			62.300.340		145.342.215	
A	-152.514.093	44.093	+26.450	-37.338.953	8.953	+24.625			236.806.850			1085.790.125
10	-152.510.055	40.055	-34.530	-37.356.603	26.603	+10.683			118.601.390			427.907.565
30	-152.479.563	9.563	-26.450	-37.349.636	19.636	+24.625			519.372.200		235.488.875	
									1437.973.790	305.107.190	380.231.090	1513.697.690
									1132.866.600			1132.866.600
										1/2 =	566.433300	
		-152.470			-37.340							
30	-152.479.563	9.563	+34.516	-37.349.636	9.636	-10.614			332.596.176		101.501.682	
10	-152.510.055	40.055	+28.339	-37.356.603	16.603	+16.378			470.512.417			656.020.790
11	-152.507.902	37.902	-3.945	-37.386.014	26.014	+10.829			102.625.230			410.440.758
12	-152.506.110	36.110	-32.363	-37.367.432	27.432	+1.203			887.781.816			43.440.330
31	-152.475.539	5.539	-26.547	-37.367.217	27.217	-17.796			722.529.699		98.572.044	
									1712.936.745	803.108.593	200.073.726	1109.901.878
									909.828.152			909.828.152
										1/2 =	454.914076	

面積計算書						工区	ブロック	計算者	精算者	備考
				# 30						9. 青江 874 (1) 10. 青江 872-2 (1)
点	①	②	③	④	⑤	⑥	③ × ⑤	② × ⑥		
	X	X-(定数)	X <sub>n-1</sub> -X <sub>n+1</sub>	Y	Y-(定数)	Y <sub>n-1</sub> -Y <sub>n+1</sub>	+ -	+ -		
17	-152.649.319	-152400 -49.319	+34.194	-37.362.711	-37300 -42.711	-10.327	1460.459934	509.317.313		
30	-152.679.563	-79.563	+26.220	-37.349.636	-49.636	+24.506	1301.455920	1949.770878		
31	-152.675.539	-75.539	-28.591	-37.367.217	-67.217	+17.408	1921.801247	1314.982912		
15	-152.659.972	-59.972	-30.170	-37.367.044	-67.044	-7.254	2022.717480	369.750888		
16	-152.665.369	-45.369	-1.653	-37.359.963	-59.963	-24.333	99.118839	1103.963877		
							4643.637566	2761.915854		
							1983.032078	3264.753990		
							1281.721712	1281.721712		
							1/2 = 640.860856			
18	-152.653.261	-152400 -53.361	+34.286	-37.325.059	-37300 -25.059	-10.733	859.172874	572.723613		
29	-152.683.605	-83.605	+26.202	-37.331.978	-31.978	+24.577	837.887556	2054.760085		
30	-152.679.563	-79.563	-34.286	-37.369.636	-49.636	+10.733	1701.819896	853.949679		
17	-152.649.319	-49.319	-26.202	-37.362.711	-42.711	-24.577	1119.113622	1012.113063		
							2820.933518	1697.060430		
							1784.826676	2902.709764		
							1123.873088	1123.873088		
							1/2 = 561.936544			

面積計算書		工区	ブロック	番	計算者	精算者	備考	
				30			11. 青江 872-1(4) 12. 青江 871-1(4)	
点	① X	② X-(定数)	③ X <sub>n-1</sub> -X <sub>n+1</sub>	④ Y	⑤ Y-(定数)	⑥ Y <sub>n-1</sub> -Y <sub>n+1</sub>	③ × ⑤ + -	② × ⑥ + -
1P	-152.456.800	-152450 6.800	+ 33.682	37.310.041	-37300 10.041	- 8.0PP	338.200P62	55.073200
28	-152.487.063	37.043	+ 26.805	37.316.P60	16.P60	+ 21.P37	454.612.800	812.612.2P1
2P	-152.483.605	33.605	- 33.682	37.321.P78	31.P78	+ 8.0PP	1077.082.PP6	272.166.8PP
18	-152.453.361	3.361	- 26.805	37.325.05P	25.05P	- 21.P37	671.706.4P5	73.730.257
							1748.78P4P1, 7P2.813.762, 128.803.457, 1084.72P186	
							155.975.72P,	955.975.72P
							1/2 = 477.P878.645	
							変更後の資料なし	
20	-152.461.P13	-152450 11.P13	+ 35.355	37.287.710	-37250 37.710	- 15.412	1333.237.050	183.603.156
27	-152.4P2.155	42.155	+ 25.130	37.2P6.62P	44.62P	+ 2P.250	1121.526.770	1233.033.750
29	-152.487.063	37.043	- 35.355	37.316.P60	66.P60	+ 15.412	2267.370.800	570.906.716
1P	-152.456.800	6.800	- 25.130	37.310.041	60.041	- 2P.250	1508.830.330	188.900.000
							3876.201130	2454.763820, 382.503.156, 1803.940.466
							1421.437310	1421.437310
							1/2 = 710.718.655	

面積計算書						工区	ブロック	計算者	精算者	備考
										13.青江870(6) 14.青江868-2(4)
点	①	②	③	④	⑤	⑥	③ × ⑤		② × ⑥	
	X	X-(定数)	X <sub>n-1</sub> -X <sub>n+1</sub>	Y	Y-(定数)	Y <sub>n-1</sub> -Y <sub>n+1</sub>	+	-	+	-
21	-152.466.256	-152450 16.256	+34.583	-37.268.762	-37250 18.742	-12.050			648.154.586	195.884.800
26	-152.496.496	46.496	+25.899	-37.275.660	25.660	+25.887			664.568.340	1203.641.952
27	-152.492.155	42.155	-34.583	-37.292.629	44.629	+12.050	1543.404.907			407.967.750
20	-152.461.913	11.913	-25.899	-37.287.710	37.710	-25.887	976.651.290		308.391.831	
							2520.055.997	1312.722.926	404.276.631	1711.609.702
							1207.333.071			1207.333.071
							変更後の資料なし		1/2 = 603.666.535.5	
22	-152.469.936	-152450 18.936	+32.919	-37.257.037	-37250 7.037	-4.784			231.651.003	90.589.824
25	-152.499.175	49.175	+27.560	-37.263.958	13.958	+18.623			384.682.480	915.786.025
26	-152.496.496	46.496	-32.919	-37.275.660	25.660	+4.784	844.701.540			222.436.864
21	-152.466.256	16.256	-27.560	-37.268.762	18.742	-18.623	516.529.520		302.735.488	
							1361.231.060	616.333.483	393.325.312	1138.222.889
							744.897.577			744.897.577
									1/2 = 372.448.788.5	

面積計算書						工区	ブロック	30	計算者	新算者	備考
点	①	②	③	④	⑤	⑥	③ × ⑤	② × ⑥			
	X	X-(定数)	X <sub>n-1</sub> -X <sub>n+1</sub>	Y	Y-(定数)	Y <sub>n-1</sub> -Y <sub>n+1</sub>	+	-			
12	-152.506.110	-152450 +6.110	+53.261	-37.367.432	-37350 +17.432	+1.874		928.445712	105.150120		
13	-152.506.233	+4.233	-53.944	-37.368.918	18.918	+1.121	1020.512592		60.7951935		
14	-152.652.166	2.166	-53.261	-37.368.553	18.553	-1.874	988.151333		4.059084		
15	-152.652.972	0.972	+53.944	-37.367.066	17.044	+1.121	919.421536		1.089612		
							2008.663925	1827.867288	5148.696	165.945333	
							160.796637		160.796637		
									1/2 = 80.3983185		
I	-152.473.886	-152450 +23.886	+10.482	-37.235.620	-37200 +25.420	-6.577		371.272440	157.098222		
1	-152.482.615	32.415	-1.953	-37.237.572	37.372	+8.529	72.987516		276.467535		
23	-152.471.933	21.933	-8.529	-37.243.949	43.949	-1.952	374.841021		42.813216		
							447.828537	371.272440	199.911438	276.467535	
							76.556097		76.556097		
									1/2 = 38.2780485		

面積計算書		工区	ウ	ブロック	# 30	計算者	定守	精算者	難波	備考	隅切. 2, 3, 4.	
点	① X	② X-(定数)	③ X <sub>n-1</sub> -X <sub>n+1</sub>	④ Y	⑤ Y-(定数)	⑥ Y <sub>n-1</sub> -Y <sub>n+1</sub>	③ +	⑤ -	② +	⑥ -	③ ×	⑤ ×
3	-152.531.576	-152530 1.674	+0.66P	37.248.648	-37240 0.648	-2.P24					5.785512	4.8P4776
II	-152.536.599	4.599	+2.256	37.249.317	9.317	+3.593					21.01P152	16.524207
4	-152.533.930	3.930	-2.P25	37.252.261	12.241	-0.66P	35.804P25				2.62P.170	
							35.804P25	26.804664	7.523P46	16.524207		
							P.000261				P.000261	
											1/2 = 4.5001305	
11	-152.507.902	-152500 7.902	+3.000	37.366.014	-37360 6.014	+0.021					18.042000	0.165P42
III	-152.507.233	7.233	-3.66P	37.368.939	8.939	+2.P04	32.7971P1					21.004632
13	-152.504.233	4.233	+0.66P	37.368.918	8.918	-2.P25					5.966142	12.381525
							32.7971P1	24.008142	12.381525	21.170574		
							8.78904P					8.78904P
											1/2 = 4.3P45245	
14	-152.452.166	-152440 12.166	-1.P53	37.368.553	-37350 12.553	+8.52P	36.23400P					103.763814
IV	-152.443.616	3.416	-6.797	37.368.402	12.4P2	-8.5P0	125.690124					29.343440
16	-152.445.369	5.369	+8.750	37.359.963	9.963	+0.061					87.176250	0.32750P
							161.924133	87.176250	29.343440	104.091323		
							74.747883					74.747883
											1/2 = 37.3739415	

計年  
月  
算日

計  
算  
者



檢  
查  
者



B.NO. ~~54~~ 30 各筆面積計算書

地番	算式	隅切地	積	摘要
	青江 867 (1)		750.97	〃
	青江 868の1(1)		587.53	〃
	青江 868の2(1)		375.35	〃
	青江 870 (1)		608.43	〃
	青江 871の1(1)		716.38	〃
	青江 872の1(1)		481.81	〃
	青江 872の2(1)		566.43	〃
	青江 874 (1)		454.91	〃
	青江 874 (1)		640.86	〃
	青江 872の2(1)		561.93	〃
	青江 872の1(1)		477.98	〃
	青江 871の1(1)		710.71	〃
	青江 870 (1)		603.66	〃
	青江 868の2(1)		372.44	〃
	水路		80.40	〃
	計		7,989.79	〃
	全体		7,989.85	〃
		差	- 0.06	〃
	換地		7,909.39	〃
	水路		80.40	〃