

BLOCK NO. 49

街 区 計 算

街区略図

工区

3

ブロック

~~28~~49

記入者



点検者



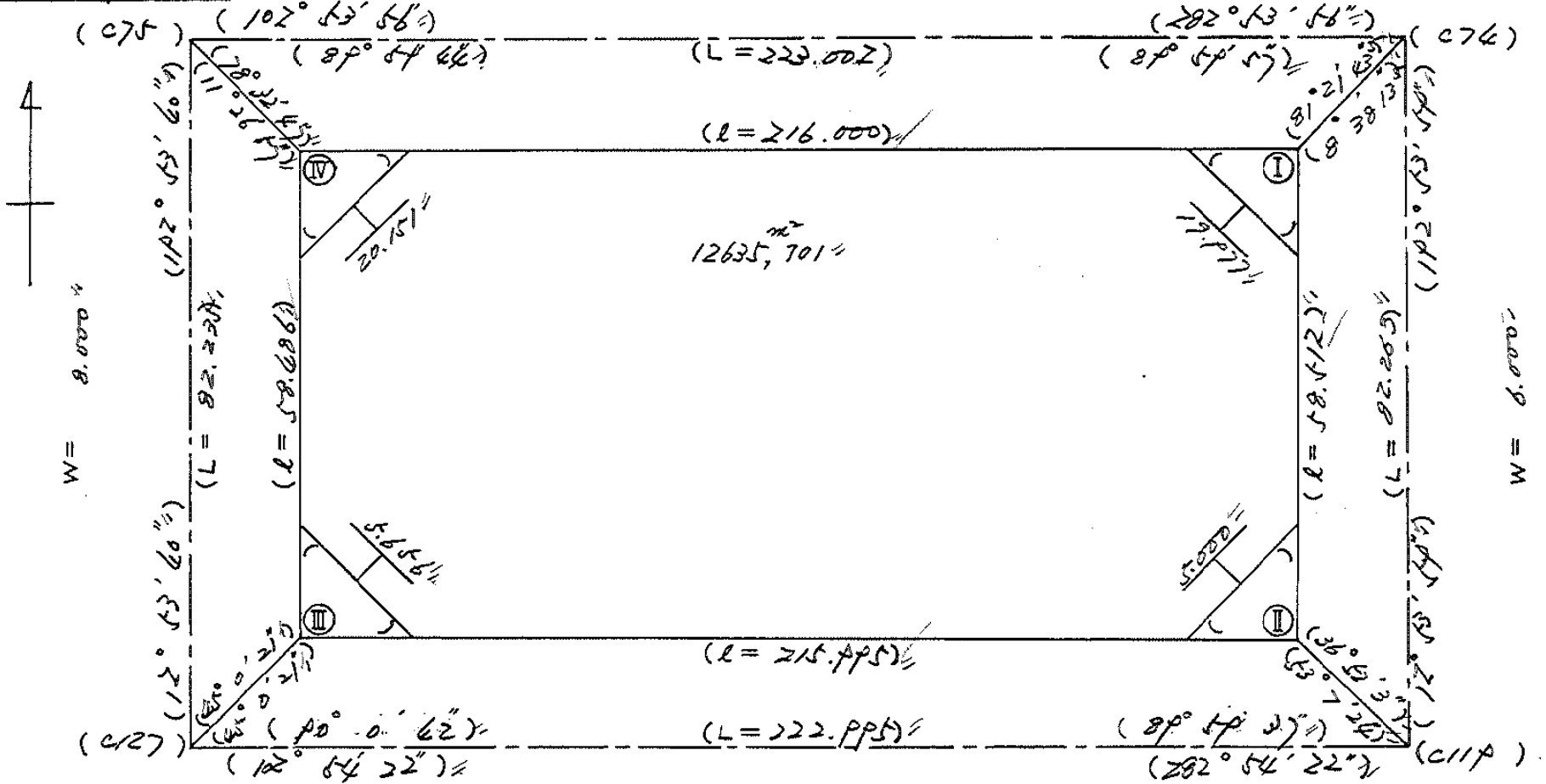
$X = -152.303.37P$

$Y = -37.408.316$

$W = 2A.600$

$X = -152.353.15P$

$Y = -37.640.461$



$X = -152.382.560$

$Y = -37.426.667$

$W = 8.000$

$X = -152.633.366$

$Y = -37.704.306$

面積計算書

工区 〇

ブロック

~~88~~49

計算者



精算者



備考

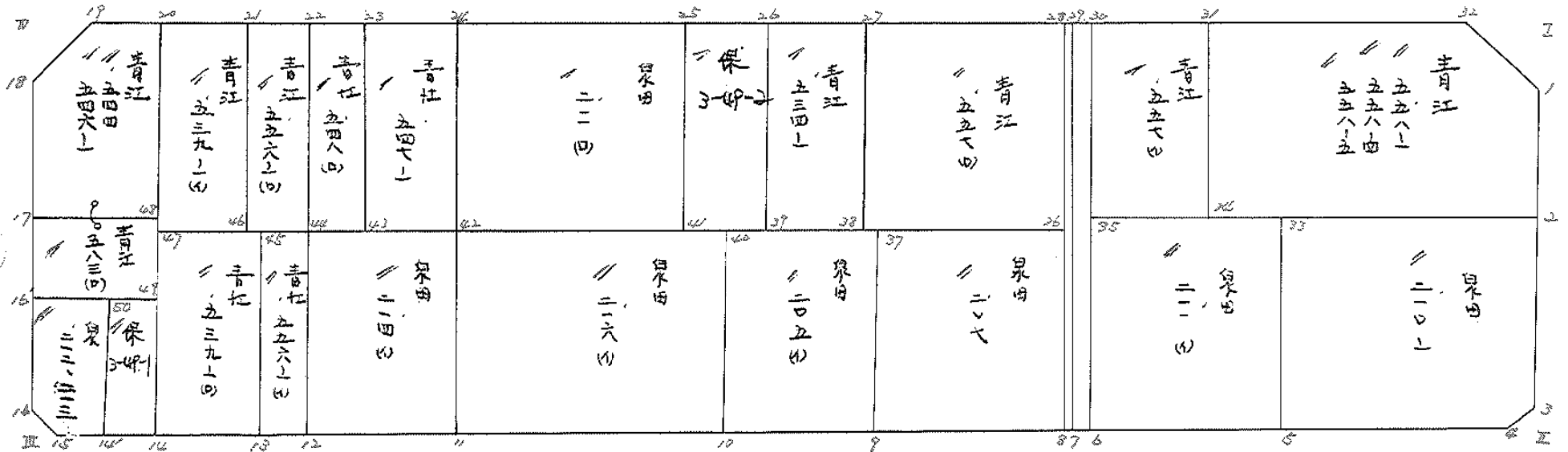
全体

点	①	②	③	④	⑤	⑥	③ × ⑤		② × ⑥		
	X	X - (定数)	X _{n-1} - X _{n+1}	Y	Y - (定数)	Y _{n-1} - Y _{n+1}	+	-	+	-	
I	-152.371.74	71.741	+105.254	-37.698.275	98.275	-197.487			10363.826850	14167.914867	
II	-152.428.77	128.777	+8.793	-37.711.337	-111.337	+223.601			978.986241		28794.665977
III	-152.780.536	-80.534	-105.254	-37.921.876	-321.876	+197.487	33878.736504				15904.418058
IV	-152.323.523	-23.523	-8.793	-37.908.824	-308.824	-223.601	2715.489432			5259.766323	
							36594.225936	11322.813091		19427.681190	44699.084035
							25271.402845				25271.402845
							$\times \frac{1}{2} =$	12635.70142257			

$$\sum (X \cdot Y) = (12.635.70 + (38.27 + 4.50 + 4.50 + 38.27)) = 12.550.164$$

面地計算

B.N.O. 5849



面積計算書		工区	ブロック	計算者	精算者	備考		
		3	33 49			青江 558-1, 558-4, 558-5. 泉田 210-1		
点	① X	② X-(定数)	③ X _{n-1} -X _{n+1}	④ Y	⑤ Y-(定数)	⑥ Y _{n-1} -Y _{n+1}	③ × ⑤ +	⑤ × ⑥ -
1	-152,380.270	-80.270	+ 29.361	-37,700.220	- 0.220	- 2,252	6,694,300	100,768,040
2	-152,399.149	- 99.149	+ 8,456	-37,704.552	- 4.552	+ 49,817	38,491,712	4,939,305,733
34	-152,388.726	- 88.726	- 37,824	-37,750.045	- 50.045	+ 39,204	189,290,200	3,470,414,104
31	-152,361.325	- 61.325	- 18,938	-37,743.756	- 43.756	- 43,241	828,651,128	2,651,754,325
32	-152,369.788	- 69.788	+ 18,945	-37,706.804	- 6.804	- 43,528	128,901,780	3,037,732,064
							272,553,200	174,087,800
							2,547,465,408	2,547,465,408
							1/2 = 1,273,732,704	
2	-152,399.149	99.149	+ 34,739	-37,704.552	4.552	- 28,955	158,131,928	2,870,269,295
3	-152,425.853	125.853	+ 28,958	-37,710.667	10.667	+ 9,709	308,894,986	1,221,906,772
4	-152,428.107	128.107	- 5,113	-37,714.261	14.261	+ 35,743	72,916,493	4,578,920,501
5	-152,420.740	120.740	- 36,993	-37,746.410	46.410	+ 25,361	1,716,845,130	3,062,087,140
33	-152,391.114	91.114	- 21,591	-37,739.622	39.622	- 41,858	855,470,602	3,813,849,812
							2,645,240,225	467,026,914
							2,178,213,311	2,178,213,311
							1/2 = 1,089,106,655	

面積計算書

工区 W ブロック 49 計算者 精算者 備考 泉明 211 61 泉明 207

点	①	②	③	④	⑤	⑥	③ × ⑤		② × ⑥	
	X	X-(定数)	X _{n-1} -X _{n+1}	Y	Y-(定数)	Y _{n-1} -Y _{n+1}	+	-	+	-
33	-152,371.114	-152,300 91.114	+35.642	-37,737.622	-37,700 39.622	-19.468			1,412.207324	1,773,807352
5	-152,420.740	120.740	+23.610	-37,746.410	46.410	+33.046			1,095.740100	3,989,974040
6	-152,414.724	114.724	-35.642	-37,772.662	72.662	+19.468	2,590.032856			2,233,446832
35	-152,385.078	85.078	-23.610	-37,765.278	65.278	-33.046	1,555.379580		2,812.198508	
							4,145.412436	2,507,947424	4,585.955860	6,223,420872
							1,637.465012			1,637,465012
								1/2 = 818.732506		
36	-152,385.663	-152,300 85.663	+34.556	-37,767.511	-37,700 69.599	-20.918			2,405.063044	1,791,898634
8	-152,413.942	113.942	+22.001	-37,776.080	76.080	+33.878			1,613,836080	3,860,127016
9	-152,407.664	107.664	-34.556	-37,803.477	103.477	+20.918	3,575.751212			2,252,115552
37	-152,379.386	79.386	-22.001	-37,776.998	96.998	-33.878	2,136,052,998		2,689,438908	
							5,709,804210	4,078,899124	4,481,337542	6,112,242628
							1,630,905,086			1,630,905,086
								1/2 = 815.452543		

面積計算書		工区	ブロック	計算者	精算者	備考	量目 205 (1)	216 (1)
点	①	②	③	④	⑤	⑥	③ × ⑤	② × ⑥
	X	X-(定数)	X _{n-1} -X _{n+1}	Y	Y-(定数)	Y _{n-1} -Y _{n+1}	+ -	+ -
37	-152,374.226	-152,300 79.386	+ 32.745	-37,746.440	-37,700 96.998	-13.022	3,176.199510	1,033.764492
9	-152,407.664	107.664	+ 23.810	-37,803.477	103.477	+25.978	2,463.789370	2,796.895392
10	-152,403.196	103.196	- 32.745	-37,822.476	122.976	+13.022	4,026.849120	1,343.878312
40	-152,374.414	74.919	- 23.810	-37,816.444	116.499	-25.978	2,773.841190	1,946.245782
							6,800.690310	5,639.986880
							2,980.010274	4,140.713704
							1,160.703430	1,160.703430
							$\frac{1}{2} = 580.351715$	
10	-152,403.196	-152,300 103.196	+ 19.320	-37,822.476	-37,800 22.976	+ 45.569	443.876320	4,702.538524
11	-152,374.234	94.239	- 37.233	-37,862.068	62.068	+32.621	2,310.977844	3,074.170419
42	-152,365.463	65.963	-19.320	-37,855.547	55.597	-45.569	1,074.134040	3,005.867747
40	-152,374.414	74.919	+ 37.233	-37,816.444	16.499	-32.621	614.307267	2,443.932677
							3,385.111884	1,058.203587
							5,449.800646	7,776.708943
							2,326.908297	2,326.908297
							$\frac{1}{2} = 1,163.4541485$	

面積計算書

工
区

3

ブ
ロ
ック

~~33~~ 49

計
算
者

精
算
者

備
考

泉田 214(3)
青沢 556-1(4)

点	①	②	③	④	⑤	⑥	③ × ⑤		② × ⑥	
	X	X-(定数)	X _{n-1} -X _{n+1}	Y	Y-(定数)	Y _{n-1} -Y _{n+1}	+	-	+	-
47	-152,365.963	-152,360 5.963	+ 32.966	-37,855.597	-37,800 55.597	-14.007		1,832.810707	83.493926	
11	-152,394.239	34.239	+ 23.585	-37,862.068	62.068	+ 26.944		1,463.873780		922.535616
12	-152,389.548	29.548	- 32.966	-37,882.541	82.541	+ 14.007	2,721.046606			413.731096
44	-152,361.273	1.273	- 23.585	-37,876.070	26.070	- 26.944	1,794.110950		34,299712	
							4,515.157556	3,296.684482	117,793638	1,336.266712
							1,218.473074			1,218.473074
									$\frac{1}{2} = 609.236537$	
44	-152,361.273	-152,350 11.273	+ 29.950	-37,876.070	-37,870 6.070	- 0.841		181.796500	9,480593	
12	-152,389.548	39.548	+ 26.599	-37,882.541	12.541	+ 13.784		333.578059		545.129632
13	-152,387.872	37.872	- 29.950	-37,889.854	19.854	+ 0.841	594.627300			31.850352
45	-152,359.598	9.598	- 26.599	-37,883.382	13.382	- 13.784	355.947818		132.298832	
							950.575118	515.394559	141.779425	576.979989
							435.200559			435.200559
									$\frac{1}{2} = 217.6002795$	

面積計算書

工区 ブロック 計算者 精算者 備考 春江 53P-1 (D) 赤保 3-CP-1

点	①	②	③	④	⑤	⑥	③ × ⑤		② × ⑥	
	X	X-(定数)	X _{n-1} -X _{n+1}	Y	Y-(定数)	Y _{n-1} -Y _{n+1}	+	-	+	-
45	-152,357.578	-152,350 9.598	+31.488	-37,883.382	-37,800 83.382	-7.557			2,625.53246	72.532086
13	-152,387.272	37,872	+25.059	-37,887.854	89.854	+20.501			2,251.651386	776.413872
14	-152,384.657	34,657	-31.488	-37,703.883	103.883	+7.557	3,271,067,904			261,902,949
47	-152,356.384	6.384	-25.059	-37,877.411	97.411	-20.501	2,441,022,249			130,878,384
							5,712,090,153	4,877,183,802	203,410,470	1,032,316,821
							834,906,351			834,906,351
									$\frac{1}{2} = 417,453,175$	
49	-152,368.416	-152,360 8.416	+17.201	-37,900.165	-37,900 0.165	-0.469			2,838,165	3,947,104
14	-152,384.657	24,657	+15.282	-37,903.883	3.883	+7.905			59,340,006	194,913,580
14	-152,383.698	23,698	-17.201	-37,908.070	8.070	+0.469	138,812,070			11,114,362
50	-152,367.456	7,456	-15.282	-37,904.352	4.352	-7.905	66,597,264			58,939,680
							205,319,334	62,178,171	62,886,784	206,027,947
							143,141,163			143,141,163
									$\frac{1}{2} = 71,570,581$	

面積計算書

工区 ウ ブロック 49 計算者 栗田 正 精算者 青江 504.506-1 備考 栗田 正 504.506-1

点	① X	② X-(定数)	③ X _{n-1} -X _{n+1}	④ Y	⑤ Y-(定数)	⑥ Y _{n-1} -Y _{n+1}	③ × ⑤ +	⑤ × ⑥ -	② × ⑥ +	③ × ⑥ -
50	-152,367.456	-152,360 7.456	+19.405	-37,104.352	-37,900 4.352	-10.088			84.450560	75.216128
14'	-152,383.678	23.698	+13.748	-37,108.070	8.070	+14.600			110.946360	345.990800
15	-152,381.204	21.204	-6.088	-37,118.752	18.952	+13.136	115.379776			278.535744
16	-152,377.610	17.610	-16.911	-37,121.206	21.206	-0.794	358.614666		13.982340	
16'	-152,364.273	4.293	-10.154	-37,118.158	18.158	-16.854	184.376332		72.354222	
							658.370774	195.396920	161.552690	624.526544
							462.973854			462.973854
									$\frac{1}{2} = 231.486927$	
16'	-152,364.273	-152,350 14.293	-16.669	-37,118.158	-37,800 118.158	+15.121	1,969.575702			216.124453
17	-152,351.747	1.747	-8.423	-37,115.286	115.286	-20.864	971.053978		36.449408	
48	-152,355.870	5.870	+16.669	-37,117.274	97.294	-15.121		1,621.793066	88.960270	
49	-152,368.416	18.416	+8.423	-37,100.165	100.165	+20.864		843.687795		384.231424
							2,940.629680	2,465.483481	125.209678	600.355877
							475.146199			475.146199
									$\frac{1}{2} = 237.5730995$	
									$\frac{1}{2} = 496.1913930$	

計算後変更 524 } 合併 712 733.764.4925 46,10.20
506-1 } 133.764 角変更 504.506-1

面積計算書										工区	ω	ブロック	49	計算者	精算者	備考	青江 544. 546-1	" 53p-1 01
点	①	②	③	④	⑤	⑥	③ × ⑤		② × ⑥									
	X	X-(定数)	X _{n-1} -X _{n+1}	Y	Y-(定数)	Y _{n-1} -Y _{n+1}	+	-	+	-								
17	-152,351.747	-152,300 51.747	-23.818	-37.815.286	-37,800 15.286	+13.483	2,745.881948			697.904801								
18	-152,332.052	32.052	-26.271	-37.810.777	110.799	-14.991	2,910.222567			480.491532								
19	-152,325.476	25.476	-4.409	-37.800.295	100.295	-19.945	442.200655			508.118820								
20	-152,327.643	27.643	+30.394	-37.800.832	90.832	-3.001		2,760.747808		82.956643								
48	-152,355.870	55.870	+24.104	-37.807.244	97.294	+24.454		2,345.194596		1,366.244980								
								6,098.305170	5,105.922384	1,071.566995	2,063.949781							
								992.382786		992.382786								
									1/2 = 496.191393									
20	-152,327.643	-152,300 27.643	-25.774	-37.800.832	-37,800 70.832	-19.536	2,341.103968			540.033618								
21	-152,330.610	30.610	+31.709	-37.877.875	77.875	-6.378		2,469.338375		195.230580								
46	-152,357.352	59.352	+25.774	-37.804.454	84.454	+19.536		2,176.717376		1,159.500672								
47	-152,356.384	56.384	-31.709	-37.897.411	97.411	+6.378	3,088.805377			359.617152								
								5,429.909367	4,646.055771	785.264228	1,519.117824							
								783.853596		783.853596								
									1/2 = 391.926798									

面積計算書

工区

3

ブロック

49

計算者



繕算者



備考

青江 556-1 (b)
542 (a)

点	①	②	③	④	⑤	⑥	③ × ⑤		② × ⑥	
	X	X-(定数)	X _{n-1} -X _{n+1}	Y	Y-(定数)	Y _{n-1} -Y _{n+1}	+	-	+	-
21	-152,330.610	-152,330 30.610	-26.822	-37,877.875	-37,860 17.875	-14.963	479.443250		458.017430	
22	-152,332.530	32.530	+30.663	-37,869.491	9.491	-1.805		291.022533	58.716650	
44	-152,361.273	61.273	+26.822	-37,876.070	16.070	+14.963		431.029540		916.827899
46	-152,359.252	59.252	-30.663	-37,884.454	24.454	+1.805	749.833002			107.130360
							1,229.276252	722.052073	516.734080	1,023.958259
							507.224179			507.224179
								1/2 = 253.6120895		
22	-152,332.530	-152,330 2.530	-26.979	-37,869.491	-37,860 9.491	-14.280	256.057689		36.128400	
23	-152,334.294	4.294	+30.508	-37,861.790	1.790	-1.123		54.609320	4.822162	
43	-152,363.038	33.038	+26.979	-37,868.368	8.368	+14.280		225.760222		471.782640
44	-152,361.273	31.273	-30.508	-37,876.070	16.070	+1.123	490.263560			35.119579
							746.321249	780.369594	40.950562	506.902219
							465.951657			465.951657
								1/2 = 232.9758285		

10

14

面積計算書										工区	ウ	ブロック	49	計算者	精算者	備考	青江 547-1
点	①	②	③	④	⑤	⑥	③	⑤	②	⑥							
	X	X-(定数)	X _{n-1} -X _{n+1}	Y	Y-(定数)	Y _{n-1} -Y _{n+1}	+	-	+	-							
23	153,334.214	-152,300 34,294	-25.819	-37,861.740	-37,800 61.790	-19.349	1,595.356010		663.554606								
24	153,337.214	37.219	+31.669	-37,844.014	49.019	-6.193		1,552.382711	230.497267								
42	153,365.463	65.963	+25.819	-37,855.547	55.597	+19.349		1,435.458443		1,276.318087							
43	153,363.033	63.033	-31.669	-37,862.368	62.368	+6.193	2,165.146192			390.394334							
							3,760.502202	2,987.841654	894.051873	1,666.712421							
							772.660548			772.660548							
								1/2 = 386.330274									
24	153,337.214	-152,300 37.219	-20.882	-37,844.014	-37,800 49.019	-40.910	1,023.614758		1,522.629290								
25	153,345.081	45.081	+36.606	-37,814.627	14.687	-27.743		537.632322	1,250.682183								
41	153,373.225	73.225	+20.882	-37,821.276	21.276	+40.910		444.285432		3,020.180700							
42	153,365.463	65.963	-36.606	-37,855.547	55.597	+27.743	2,035.183782			1,830.011509							
							3,058.78540	981.917754	2,773.11475	4,850.192259							
							2,076.880786			2,076.880786							
								1/2 = 1,038.440393									

面積計算書

工区

3

ブロック

49

計算者



精算者



備考

青土 534-1

14-10
永保 3-49-2

点	①	②	③	④	⑤	⑥	③ × ⑤		② × ⑥	
	X	X-(定数)	X _{n-1} -X _{n+1}	Y	Y-(定数)	Y _{n-1} -Y _{n+1}	+	-	+	-
25	-152,345.081	-152,300 45.081	-27.137	-37,814.687	-37,800 14.687	-13.607	398.561119		613.417167	
26	-152,346.688	46.688	+30.352	-37,807.664	7.669	-0.431		232.769488	20.122528	
34	-152,375.433	75.433	+27.137	-37,814.256	14.256	+13.607		386.865072		1026.416831
41	-152,373.225	73.825	-30.352	-37,821.276	21.276	+0.431	645.769152			31,318.575
							1,044.330271	619.634560	633.539695	1,058.235406
							424.695711			424.695711
								$\frac{1}{2} = 212.3478555$		
26	-152,346.688	-152,300 46.688	-24.927	-37,807.664	-37,700 107.669	-23.258	2083.865163		1,085.869504	
27	-152,350.506	50.506	+32.564	-37,790.478	70.998	-10.086		2,963.258872	509,403,516	
38	-152,379.252	79.252	+24.927	-37,777.583	97.583	+23.258		2,432.451441		1,843.243016
39	-152,375.433	75.433	-32.564	-37,814.256	114.256	+10.086	3,720.632384			760.317238
							6,404.497547	5,395.710313	1,595.273020	2,604,060,254
							1,008.787234			1,008.787234
								$\frac{1}{2} = 504.393617$		

面積計算書						工区	ブロック	49	計算者	精算者	備考	春江 557 (10)
点	①	②	③	④	⑤	⑥	③ × ⑤		② × ⑥			
	X	X-(定数)	X _{n-1} -X _{n+1}	Y	Y-(定数)	Y _{n-1} -Y _{n+1}	+	-	+	-		
27	-152,350.506	-152,300 50.506	+ 22.336	-37,770.499	-37,700 90.998	+ 34.573					2,032.531328	1,746.143938
28	-152,379.252	79.252	+ 35.157	-37,777.523	97.583	- 21.379					3,430.72553	1,695.713548
26	-152,385.663	85.663	- 22.336	-37,769.577	69.599	- 34.573	1,554.663764				2,961.626899	
28	-152,356.916	56.916	- 35.157	-37,763.010	63.010	+ 21.379	2,215.242570					1,217.945484
							3,769.805834	5,463.256859	4,657.540447	2,964.089422		
								1,693.451025	1,693.451025			
									$\frac{1}{2} = 846.7255125$			
30	-152,357.647	-152,300 57.647	- 23.773	-37,759.598	-37,700 59.598	- 22.122	1,416.823254				7,276.32034	
31	-152,361.925	61.925	+ 31.029	-37,743.756	43.756	- 9.553					1,357.704924	385.837725
34	-152,388.726	88.726	+ 23.773	-37,750.045	50.045	+ 22.122					1,182.719785	1,962.796572
35	-152,385.098	85.098	- 31.029	-37,765.878	65.878	+ 9.553	2,044.128462					812.941194
							3,460.951916	2,549.424709	1,862.210759	2,775.737716		
							913.527007					913.527007
									$\frac{1}{2} = 456.7635035$			

面積計算書						工区	3	ブロック	49	計算者	精算者	備考	水路
点	①	②	③	④	⑤	⑥	③	×	⑤	②	×	⑥	
	X	X-(定数)	X _{n-1} -X _{n+1}	Y	Y-(定数)	Y _{n-1} -Y _{n+1}	+		-	+		-	
29	153,357.137	-152,350 7.13P	-56.46P	-37,762.035	-37,750 12.035	-15.57	67P.5923P			110.704473			
30	153,357.697	7.697	+57.585	-37,765.598	9.598	+10.633		+52.700930			21.242201		
6	153,414.724	64.724	+56.46P	-37,772.668	22.668	+15.507		12P.016624			1003.67506P		
7	153,414.165	64.165	-57.585	-37,775.105	25.105	-10.633	14.45.671625			682.266445			
							2125.263205	1832.717454	7P.970910	1085.51726P			
							2P.546351				2P.546351		
										1/2=146.273175			
28	152,356.916	-152,350 6.916	-56.803	-37,763.010	-37,760 3.010	-14.045	1170.977030			97.135220			
29	153,357.137	7.13P	+57.24P	-37,762.035	2.035	+12.095		116.501715			26.346205		
7	152,414.165	64.165	+56.803	-37,775.105	15.105	+14.045		858.009345			901.197425		
8	152,413.942	63.942	-57.24P	-37,776.080	16.080	12.095	920.563920			773.378490			
							1091.240950	974.511030	870.513710	987.543630			
							117.029920				117.029920		
										1/2=58.514960			

面積計算書						工区	ブロック	計算者	精算者	備考
			3		5349					陽川
点	①	②	③	④	⑤	⑥	③	⑤	②	⑥
	X	X-(定数)	X _{n-1} -X _{n+1}	Y	Y-(定数)	Y _{n-1} -Y _{n+1}	+	-	+	-
32	-152,367.788	-152,300 67.788	- 8.527	-37,706.804	-37,600 106.804	- 1.953	910.931316		136.295964	
I	-152,371.741	71.741	+ 10.482	-37,698.275	98.275	- 6.576		1,030.118550	491.768816	
1	-152,380.270	80.270	- 1.953	-37,700.228	100.228	+ 8.527	195.745284			684.62283
							1,106.676600	1,030.118550	608.06478	684.62283
							76.558051			76.558051
								$\frac{1}{2} = 38.279025$		
4	-152,428.107	-152,420 8.107	- 2.924	-37,714.261	-37,700 14.261	- 0.670	41.699164		5.431690	
3	-152,425.853	5.853	+ 0.670	-37,710.667	10.667	- 2.924		7.146890	17.114192	
II	-152,428.777	8.777	+ 2.254	-37,711.337	11.337	+ 3.594		25.553598		31.544538
							41.699164	32.700488	22.545862	31.544538
							8.998676			8.998676
								$\frac{1}{2} = 44.99338$		

面積計算書		工区	ウ	ブロック	49	計算者	精算者	備考	陽功	
点	①	②	③	④	⑤	⑥	③ ×	⑤	② ×	⑥
	X	X-(定数)	X _{n-1} -X _{n+1}	Y	Y-(定数)	Y _{n-1} -Y _{n+1}	+	-	+	-
15	152,381.204	-152,300 81.204	-2.924	37,108.952	-37,900 18.952	-0.670	55,415,648		54,406,680	
16	152,377.610	77.610	-0.670	37,221.206	21,206	+2.924	14,208,020			226,931,640
17	152,380.534	80.534	+3.594	37,221.876	21,876	-2.254		78,622,344	181,523,636	
							69,623,668	78,622,344	235,930,316	226,931,640
								8,998,676	8,998,676	
								$\frac{1}{2} = 4,499,338$		
18	152,322.052	-152,300 22.052	+1.953	37,110.777	-37,900 10.117	-8.529		21,047,481	273,371,508	
19	152,325.476	25.476	-8.529	37,100.245	0,225	-1.953	2,516,055		49,754,628	
20	152,323.523	23.523	+6.576	37,108.824	8,824	+10.482		58,026,624		246,568,086
							2,516,055	79,074,105	323,126,136	246,568,086
								76,558,050	76,558,050	
								$\frac{1}{2} = 38,279,025$		

計年
月
算日

計
算
者



檢
查
者



B.NO. 49 各筆面積計算書

地番	算式	隅切	地積	摘要
	青江 55801 55804 55805 }		1,273.73	
	泉田 21001		1,089.10	
	泉田 211 田		818.73	
	泉田 207		815.45	
	泉田 205 田		580.35	
	泉田 216 田		1,163.45	
	泉田 214 田		609.23	
	青江 55601 田		217.60	
	青江 53901 田		417.45	
	米(保) 3-49-1		71.57	
	泉田 212・213 85091, 85602 青江 55601, 55602 92302 田 92302 青江 583 田		231.48	
	青江 544, 54601		237.57	
	青江 53901 田		737.94 498.49	分筆付 46.10.20
	青江 53901 田		391.92	
	青江 55601 田		253.61	
	青江 5480 田		232.97	
	青江 54701		386.33	
	泉田 211 田		1,038.44	
	米(保) 3-49-2		212.34	
	青江 53401		504.39	
	青江 557 田		846.72	
	青江 557 田		456.76	

