

BLOCK NO. 59

街 区 計 算

街区略図

工区

2

ブロック

59

記入者



点検者

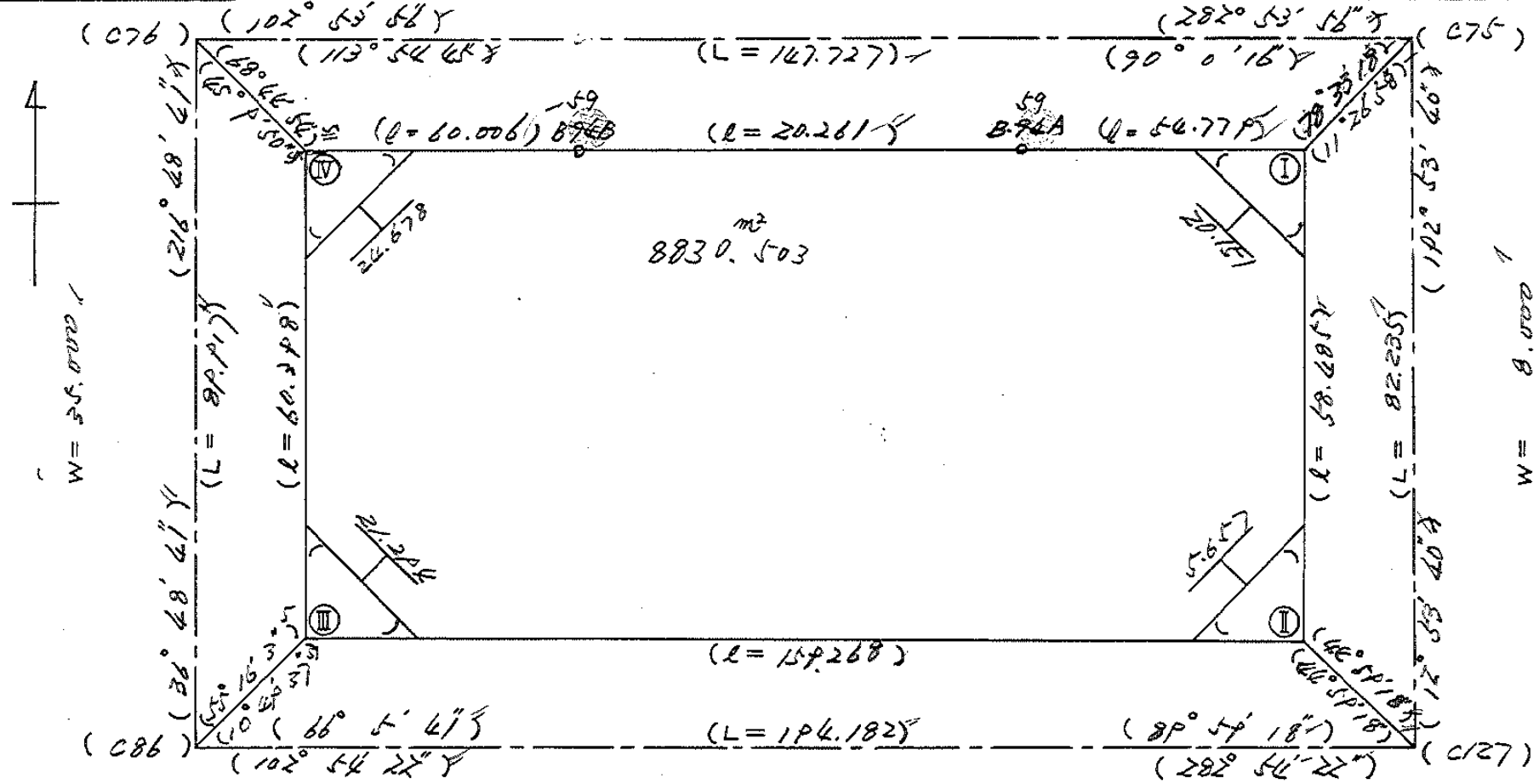


X = -152.270.401
Y = -38.052.315

W = 46.000

W = 37.500

X = -152.303.379
Y = -37.908.316



X = -152.342.602
Y = -38.106.197

W = 8.000

X = -152.383.540
Y = -37.926.667

面積計算書

工区

ウ

ブロック

5P

計算者



精算者



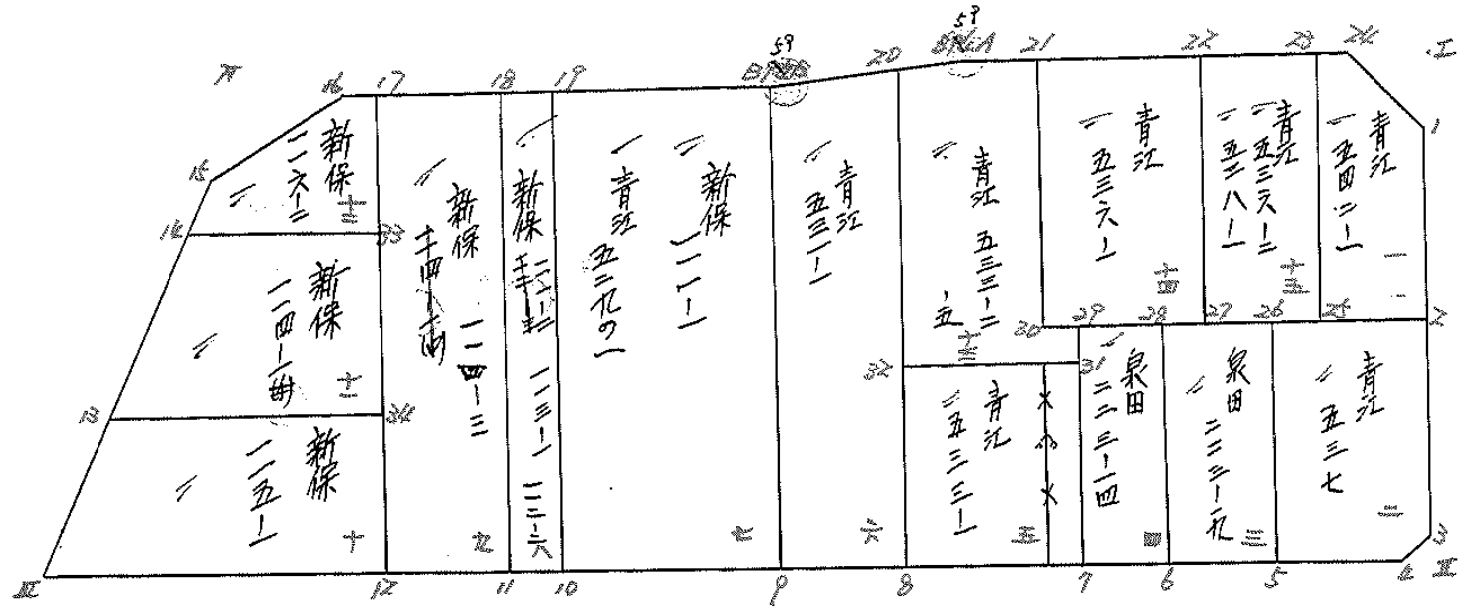
備考

全体

点	①	②	③	④	⑤	⑥	③ × ⑤		② × ⑥	
	X	X-(定数)	X _{n-1} -X _{n+1}	Y	Y-(定数)	Y _{n-1} -Y _{n+1}	+	-	+	-
I	221.738	171.738	+69.238	916.622	16.622	-40.346		1150.574036	4911.541348	
II	378.748	178.748	+21.436	929.673	29.673	+168.295		636.070228		35082.394660
III	343.174	143.174	-83.931	984.917	184.917	+119.057	15520.26977			17025.866918
IV	294.817	94.817	-34.960	948.730	148.730	-94.678	599.600800			8977.093926
B74B	308.214	108.214	+14.693	990.239	90.239	-78.711		1325.881627	857.632154	
B74A	309.510	109.510	+13.524	970.019	70.019	-73.617		946.936956	8061.797670	
								20719.868274	40597.63067	30668.185999
								16660.106680		16660.106680
								× 1/2 = 8330.05242		
				7170 I	II	71				
		8330.05		(38.28 + 4.50 + 45.71)					8241.56	

面地計算

3IX BNO. 5P



面積計算書		工区	ブロック	計測者	精算者	備考		
				57		1.青江 542-1 2.青江 537		
点	①	②	③	④	⑤	⑥	③ × ⑤	② × ⑥
	X	X-(定数)	X _{n-1} -X _{n+1}	Y	Y-(定数)	Y _{n-1} -Y _{n+1}	+ -	+ -
1	280.287	-152,310 20.267	+ 31.891	918.575	-37,910 8.575	- 1.675	273.465325	33.747225
2	251.676	41.676	+ 18.577	923.476	13.476	+ 17.261	250.343652	719.369476
25	248.844	38.844	- 32.766	935.836	25.836	+ 5.474	846.542376	213.408936
23	218.910	8.910	- 29.059	928.970	18.970	- 10.685	551.249230	95.203350
24	219.785	9.785	+ 11.357	925.151	15.151	- 10.395	172.069907	101.715075
							1397.791606	695.878804
							230.865650	932.778372
							201.912722	701.912722
							1/2 = 350.956361	
2	251.676	-152,340 11.676	+ 28.113	923.476	-37,920 3.476	- 11.779	97.720788	137.531604
3	275.826	35.826	+ 26.402	929.006	9.006	+ 9.121	237.723608	326.750704
4	278.078	38.078	- 1.042	932.597	12.597	+ 17.976	13.126074	684.490128
5	274.782	34.782	- 30.367	946.980	26.980	+ 8.186	819.301660	284.725452
26	347.711	7.711	+ 23.106	940.783	20.783	- 23.504	480.211998	181.239344
							1312.639732	335.444396
							977.195336	318.770948
							1295.966284	977.195336
							1/2 = 488.597668	

面積計算書

工区

3

ブロック

59

計算者



精算者



備考

3. 泉田 223-19
4. 泉田 223-14

点	①	②	③	④	⑤	⑥	③ × ⑤		② × ⑥	
	X	X-(定数)	X _{n-1} -X _{n+1}	Y	Y-(定数)	Y _{n-1} -Y _{n+1}	+	-	+	-
25	267.911	7.711	+30.105	960.983	0.983	-7.048			23.572215	54.347128
5	274.782	34.782	+27.025	966.980	6.980	+19.446			182.706350	676.370772
6	271.946	36.746	-30.105	962.229	20.229	+7.048	608.994065			266.889808
28	244.677	4.677	-27.025	954.028	14.028	-19.446	577.243780			90.948942
							788.24025	212.276545	165.296070	921.260580
							775.964510			775.964510
									1/2 = 387.982255	
28	244.677	4.677	+29.501	954.028	4.028	-4.414			118.930028	20.646278
6	271.746	31.746	+24.636	960.229	10.229	+16.818			252.001644	153.906228
7	269.313	29.313	-29.501	970.866	20.866	+4.414	614.977846			129.387582
29	242.245	2.245	-24.636	964.643	14.643	-16.818	360.746948			37.756410
							875.722794	370.831672	58.400688	663.291810
							604.891122			604.891122
									1/2 = 302.445561	

面積計算書

工区

3

ブロック

59

計算者



精算者



備考

3. 泉田 223-19

点	①	②	③	④	⑤	⑥	③ × ⑤		② × ⑥	
	X	X-(定数)	X _{n-1} -X _{n+1}	Y	Y-(定数)	Y _{n-1} -Y _{n+1}	+	-	+	-
26	347.711	7.711	+30.105	940.783	0.783	-7.048		23.572	215	54.347128
5	374.782	34.782	+24.035	946.980	6.980	+19.446		167.764300		676370.772
6	371.746	31.746	-30.105	960.229	20.229	+7.048		608.994045		223.745208
28	344.677	4.677	-24.035	954.028	14.028	-19.446		337.162980		90.948942
								946.157025	181.336515	145.286070
								754.820510		900.116580
										754.820510
										$\frac{1}{2} = 377.410255$

座標法面積計算 (DESCRIPTION OF APPLICATION)

(3-59
泉田.223-19) BLOCK

測点 STA.NO	X (1)	Δx (2)	Y (3)	Δy (4)	(2) × (3)	(1) × (4)
26	-152347.711	-29.799	-37940.783	5.713	1130597.392617	-870362.472943
5	-152374.782	-24.341	-37946.980	-18.111	923667.440180	2759659.676802
B	-152372.052	29.799	-37958.894	-5.713	-1131137.082306	870501.533076
A	-152344.983	24.341	-37952.693	18.111	-923806.500313	-2759119.987113
					-678.749822	678.749822
					-339.374911	339.374911

座標法面積計算 (DESCRIPTION OF APPLICATION)

3-59
(泉田223~23 BLOCK)

測点 STA.NO	X (1)	△X (2)	Y (3)	△Y (4)	(2) × (3)	(1) × (4)
A	-152344.983 ✓	-27.375	-37952.693 ✓	-4.866	1038954.970875	741310.687278
B	-152372.052 ✓	-26.763	-37958.894 ✓	-7.536	1015893.880122	1148275.783872
6	-152371.746 ✓	27.375	-37960.229 ✓	4.866	-1039161.268875	-741440.916036
28	-152344.677 ✓	26.763	-37954.028 ✓	7.536	-1015763.651364	-1148069.485872
					-76.069242	76.069242
					-38.034621 ✓	38.034621

面積計算書

工区

ウ

ブロック

56

計算者



精算者



備考

5. 青21533-1
~~6. 青21531-1~~

点	①	②	③	④	⑤	⑥	③ × ⑤		② × ⑥	
	X	X-(定数)	X _{n-1} -X _{n+1}	Y	Y-(定数)	Y _{n-1} -Y _{n+1}	+	-	+	-
41	345.266	-152.240	+27.989	965.336	-37.960	-11.683				
7	369.313	29.313	+20.111	970.846	10.846	+22.690				
8	365.377	25.377	-27.989	988.026	28.026	+11.683				
32	361.324	1.324	-20.111	992.529	22.529	-22.690				
							1237.500423	367.473210	91.564232	961.591461
							870.0272235			870.0272235
								1/2 = 435.0136115		
20	309.179	-152.260	-42.837	975.182	-37.970	-2.213				
8	3365.377	5.377	-47.170	988.026	18.026	+27.365				
19	362.049	2.049	+42.837	1025.47	32.147	+2.213				
BP4B	308.214	18.214	+47.130	990.239	20.239	-27.365				
							1071.546714	2348.079909	1428.209237	151.676042
								1276.533195	1276.533195	
								1/2 = 638.2665975		

+

面積計算書						工区	ブロック	計算者	精算者	備考
						3	59			6. 青江 431-1
点	①	②	③	④	⑤	⑥	③ × ⑤	② × ⑥		
	X	X-(定数)	X _{n-1} -X _{n+1}	Y	Y-(定数)	Y _{n-1} -Y _{n+1}	+	-		
20	-152, 309.179	-152, 300 9.179	+57.163	-37, 975.182	-37, 970 5.182	-2.213	296.218666	20.313127		
8	365.377	65.377	+52.870	988.026	18.026	+27.365	953.034620	1799.041605		
9	362.049	62.049	-57.163	-38, 102.547	32.547	+2.213	1860.484161	137.314437		
19 B. F. B	308.214	8.214	-52.870	-37, 990.239	20.239	-27.365	1070.035930	226.776110		
							2930.420091	1249.253286		
							1681.266805	245.089237		
								1926.346042		
								1681.266805		
								1/5 = 840.6334025 =		

面積計算書

工区 W ブロック 計算者 精算者 備考

7. 新保 111-1 112-1
 青江 529-1
 8. 新保 111-2 113-1

点	①	②	③	④	⑤	⑥	③ × ⑤		② × ④ × ⑥	
	X	X-(定数)	X _{n-1} -X _{n+1}	Y	Y-(定数)	Y _{n-1} -Y _{n+1}	+	-	+	-
49	762	-152.300			-37.990					
9	308.214	8.214	+59.416	990.239	0.239	-12.060			14.200424	99.060840
9	362.049	62.049	+48.251	302.547	12.547	+36.675			605.425297	2275.647075
10	356.665	66.665	-59.416	026.914	36.914	+12.060	2193.282224			680.967900
19	302.633	2.633	-48.251	014.607	24.607	-36.675	1187.312352			96.565275
							3380.594521	619.605721	195.626115	2956.614975
							2760.988860		1/2	2760.988860
									1/2	1380.494430
19	-752	-152.300			-38.010					
19	302.633	2.633	+55.172	014.607	4.607	+6.459			254.177404	17.006547
10	356.665	66.665	+52.492	026.914	16.914	+18.155			887.849688	1025.122075
11	355.125	65.125	-55.172	032.762	22.762	-6.459	1255.825064			356.052375
18	301.293	1.293	-52.492	020.657	10.657	-18.155	548.803860			23.424615
							1804.628924	1142.027077	379.526790	1042.128627
							662.601832			662.601832
									1/2	331.300916

面積計算書						工区	ブロック	計算者	精算者	備考
						ウ	59			9. 新保 114-1 10. 新保. 115-1
点	①	②	③	④	⑤	③ × ⑤		② × ⑥		
	X	X-(定数)	X _{n-1} -X _{n+1}	Y	Y-(定数)	+	-	+	-	
18	⁻¹⁵² 301.293	^{-152,290} 11.293	+56.974	⁻³⁸ 020.655	^{-38,020} 0.455	-1.240		25.905425	14.003320	
11	355.125	65.125	+50.728	032.762	12.762	+26.853		647.390736	1683.676625	
12	352.021	62.021	+6.935	046.308	26.308	+1.240		1497.845980	76.906040	
17	298.190	8.190	-50.728	034.002	12.002	-25.853		710.293456	211.736070	
								2208.139436	673.29616	
								1534.843275	1760.582665	
									1/2 = 767.4216375	
34	⁻¹⁵² 333.974	^{-152,320} 13.974	+25.068	⁻³⁸ 042.182	^{-38,040} 2.182	-26.470		44.698376	369.891780	
12	352.021	32.021	+9.200	046.308	6.308	+42.735		48.093600	1368.417425	
11	343.174	23.174	-25.068	084.917	44.917	+26.470		1125.979356	613.415780	
13	326.953	6.953	-9.200	072.778	32.778	-42.735		301.447600	297.136455	
								1427.536956	112.731976	
								1314.804980	667.028235	
									1981.833215	
									1312.804980	
									1/2 = 657.402490	

面積計算書						工区	ブロック	計算者	新保者	備考
						ウ	59			11. 新保 114-1 12. 新保 116-2
点	①	②	③	④	⑤	⑥	③ × ⑤		② × ⑥	
	X	X-(定数)	X _{n-1} -X _{n+1}	Y	Y-(定数)	Y _{n-1} -Y _{n+1}	+	-	+	-
12	13.595	13.595	+25.324	037.524	7.524	-16.899			190.537776	229.741905
13	13.674	13.674	+13.358	042.182	12.182	+35.254			162.727156	1197.719396
13	26.653	26.653	-25.324	072.778	42.778	+16.899	1089.310072			65.478767
14	8.650	8.650	-13.358	059.081	29.081	-35.254	388.463998		306.947100	
							1471.774070	353.264932	434.629005	1653.198143
							1118.509138			1118.509138
								1/2 =	549.254569	
17	8.190	8.190	+16.546	034.002	4.002	-1.458			66.217092	11.941020
13	13.595	13.595	+10.460	037.524	7.524	+25.079			78.701060	491.739005
14	8.650	8.650	-10.772	059.081	29.081	+17.197	313.280592			320.724050
15	12.823	12.823	-11.601	054.721	24.721	-20.099	286.788321		257.729477	
16	7.069	7.069	-4.633	038.982	8.982	-20.719	41.613606		146.048271	
							641.662459	144.918132	415.718728	912.463055
							496.744327			496.744327
								1/2 =	248.3721635	

面積計算書		工区	ブロック	計算者	精算者	備考				
						13 青江 533-2 -5 14 青江 536-1				
点	① X	② X-(定数)	③ X _{n-1} -X _{n-1}	④ Y	⑤ Y-(定数)	⑥ Y _{n-1} -Y _{n+1}	③ × ⑤ +	⑤ × ⑥ -	② × ⑥ +	⑥ × ② -
Z1	11.700	-152,300 11.700	+32.128	960.454	-37,960 0.454	-2.725			14,586.112	31,822.500
ZD	41.638	41.638	+30.545	967.294	7.294	+4.189			222,795.230	174,421.582
Z9	42.245	42.245	+3.628	964.643	4.643	-1.958			16,844.804	82,715.710
Z1	45.266	45.266	-0.721	965.336	5.336	+17.886	4,914.456			809,627.676
Z2	41.324	41.324	-36.087	982.529	22.529	+9.846	813,004.022			406,876.104
ZD	9.179	9.179	-31.814	975.182	15.182	-12.510	483,000.148		114,229.290	
D1A	9.510	9.510	+2.521	970.019	10.019	-14.728			25,257.899	140,063.280
							1300,918.627	279,484.025	339,490.780	1390,925.262
							1021,434.582		1/2 = 510,717.291	1021,434.582
Z2	15.876	-152,310 15.876	+34.110	942.222	-37,940 2.222	-11.372			75,782.420	66,821.872
Z7	45.810	45.810	+25.762	949.082	9.082	+25.072			233,970.484	897,228.320
ZD	41.638	41.638	-34.110	967.294	27.294	+11.372	930,998.340			359,787.336
Z1	1.700	1.700	-25.762	960.454	20.454	-25.072	426,935.948		42,622.400	
							1457,934.288	309,762.904	109,444.272	1257,615.656
							1148,171.384			1148,171.384
									1/2 = 574,085.692	

面積計算書

工
区

ウ

ブロック

59

計算者



精算者



備考

15. 青江 536-2
538-1

点	①	②	③	④	⑤	⑥	③ × ⑤		② × ⑥		
	X	X-(定数)	X _{n-1} -X _{n+1}	Y	Y-(定数)	Y _{n-1} -Y _{n+1}	+	-	+	-	
23	318.910	8.910	+32.968	928.970	8.970	-6.386		295.722960		46.899260	
25	348.844	38.844	+26.900	935.836	15.836	+20.112		425.988400		781.230528	
27	345.810	31.810	-32.968	949.082	29.082	+6.386		968.775376		228.692660	
22	315.876	5.876	-26.900	942.222	22.222	-20.112		597.771800		118.178112	
								1556.547176	721.711360	175.077272	1009.913880
								834.825816			834.825816
									1/2 = 417.417908		

面積計算書		工区	ブロック	計算者	精算者	備考	隅切 I, II			
点	①	②	③	④	⑤	⑥	③ × ⑤	② × ⑥		
	X	X-(定数)	X _{n-1} -X _{n+1}	Y	Y-(定数)	Y _{n-1} -Y _{n+1}	+	-	+	-
I	321.738	^{-152,310} 11.738	+10.482	916.622	^{-37,910} 6.622	-6.576		69.411804	77.189088	
1	330.267	20.267	-1.953	918.575	8.575	+8.529	16.746975			172.857243
24	319.785	9.785	-8.529	925.151	15.151	-1.953	129.222879		19.110105	
							145.969854	69.411804	96.299193	172.857243
							76.558050			76.558050
								1/2 = 38.279025		
3	375.824	^{-152,370} 5.824	+0.670	929.004	^{-37,920} 9.004	-2.924		6.032680	17.029376	
II	378.768	8.768	+2.254	929.673	9.673	+3.593	21.802942			31.431564
4	378.078	8.078	-2.924	932.697	12.597	-0.669	36.833628		5.404185	
							36.833628	27.835622	22.433558	31.431564
							8.998006			8.998006
								1/2 = 4.499003		

面積計算書		工区	ブロック	計算者	精算者	備考	
				59		隅切T	
点	①	②	③	④	⑤	③ × ⑤	② × ⑥
	X	X-(定数)	X _{n-1} -X _{n+1}	Y	Y-(定数)	+ -	+ -
15	⁻¹⁵² 202.823	^{-152, 290} 12.823	⁻³⁸ -2.237	054.721	^{-38, 030} 24.721	+ 9.748 = 55.177272	124.998606
14	296.817	4.817	-5.774	068.730	18.730	-15.739 = 108.147020	75.814763
16	297.049	7.049	+8.006	038.982	8.982	+5.991 = 71.909897	42.230559
						163.224292	71.909897
						91.414400	75.814763
							167.229163
							91.414400
							1/2 = 45.707200

計年月日

計算者



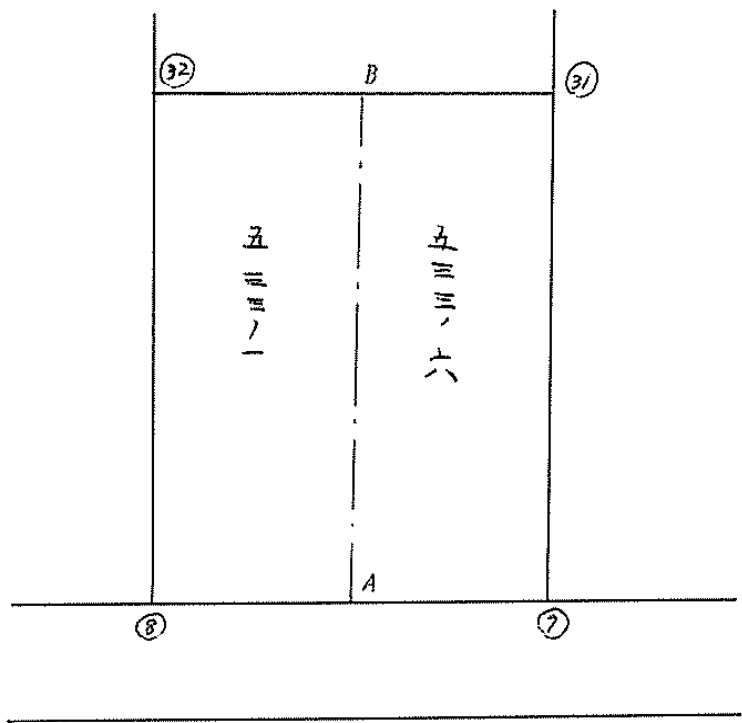
檢査者



B. NO. 59

各筆面積計算書

地番	算式	開切	地積	摘要
1	青江 542-1		250 95	
2	青江 537		488 59	
3	泉田 223-19		277 41	
4	泉田 223-14		202 44	
5	青江 533-1		425 01	
6	青江 531-1		860 63	
7	新保 111-1 112-1 青江 529-1		1380 49	
8	新保 111-2 113-1 112-2 112-3		331 30	
9	新保 114-1 (12) ¹¹⁴⁻³		767 42	
10	新保 115-1		657 40	
11	新保 116-1 4		559 25	
12	新保 116-2		248 37	
13	青江 533- ² / ₅		510 71	
14	青江 536-1		574 08	
15	青江 536-2 538-1		417 41	
計			8241 46	
金			8241 56	
差			0 10	
	換地面積		8241 46	



面積計算書

地番

五三三一

五三三一六

点	① X	② X-(定数) -340	③ X _{n-1} -X _{n,1}	④ Y	⑤ Y-(定数) -270	⑥ Y _{n-1} -Y _{n,1}	⑦ +	⑧ ×	⑨ -	⑩ +	⑪ ×	⑫ -
32	341.324	1.324	22.082	982.529	12.529	14.094	276.66537			18.660456		
B	343.295	3.295	-26.021	973.932	3.932	3.093		102.31457		10.191435		
A	367.345	27.345	-22.082	979.436	9.436	-14.094		208.36575				385.40043
8	365.377	25.377	26.021	988.026	18.026	-3.093	469.05454					28.491061
							745.71991	210.68032		28.851891		463.89149
							435.03959			435.0396		
							<u>217.51979</u>					
B	343.295	3.295	22.079	973.932	13.932	14.100	307.60462			46.4595		
31	345.266	5.266	-26.018	965.336	5.336	3.086		138.83204		16.250876		
7	369.313	29.313	-22.079	970.846	10.846	-14.100		239.46883				413.3133
A	367.345	27.345	26.018	979.436	19.436	-3.086	505.68584					84.38667
							813.29146	378.30087		62.710376		497.69997
							434.98959			434.9896		
							<u>217.49479</u>					
							<u>217.5074</u>					

備 197

59