

**BLOCK NO. 48**

**街 区 計 算**

街区略図

工区

v

ブロック

~~29~~ 48

記入者

点検者



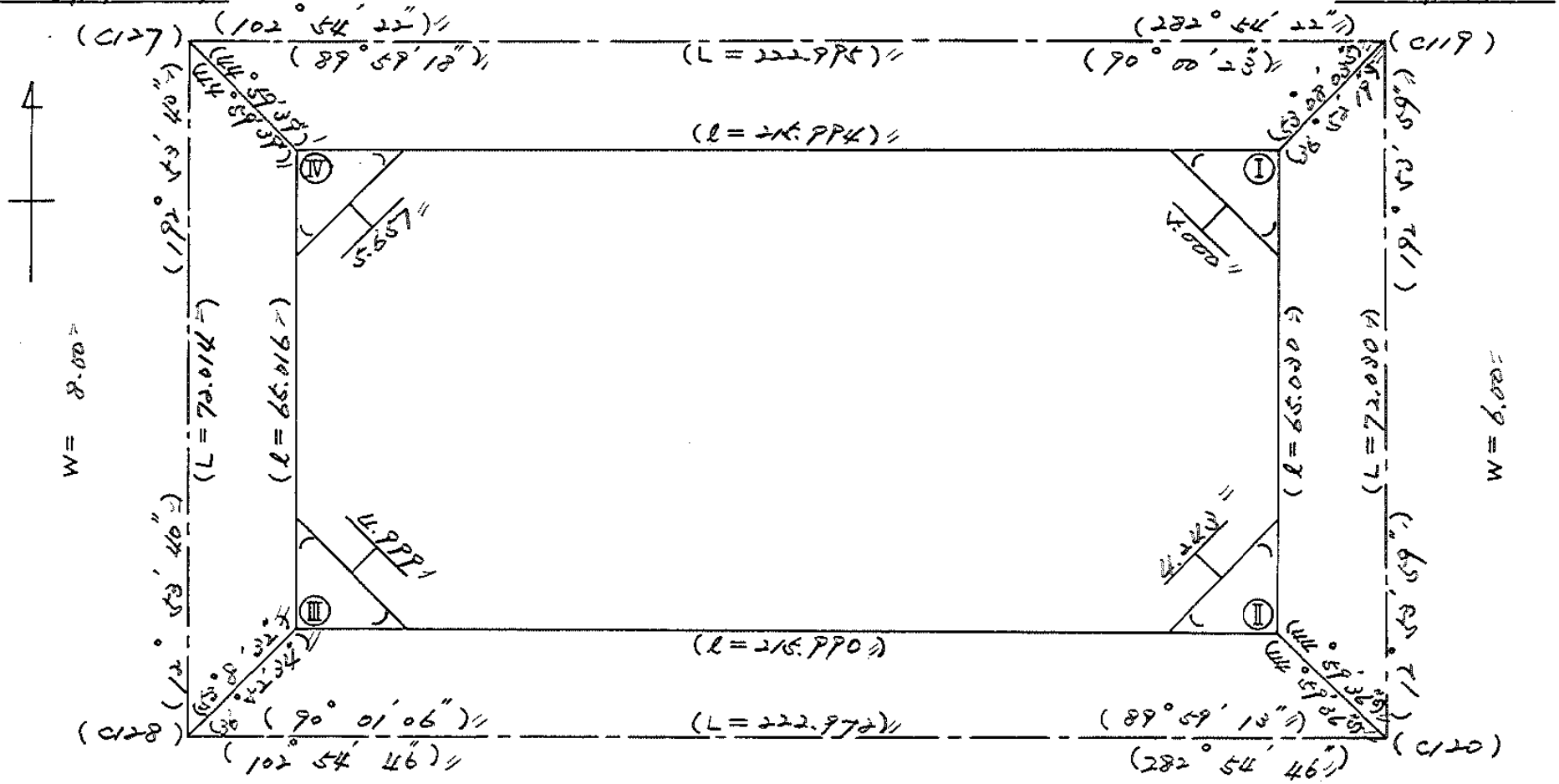
$X = -152,383.540$

$Y = -37,926.667$

$W = 8.00$

$X = -152,433.846$

$Y = -37,909.206$



$X = -152,453.738$

$Y = -37,942.738$

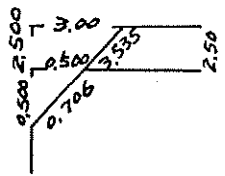
$W = 6.00$

$X = -152,503.558$

$Y = -37,925.326$

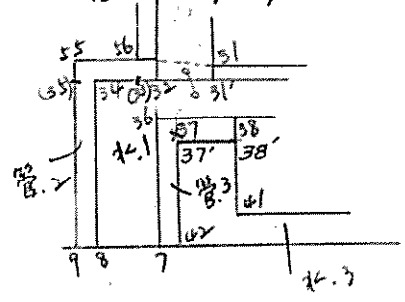
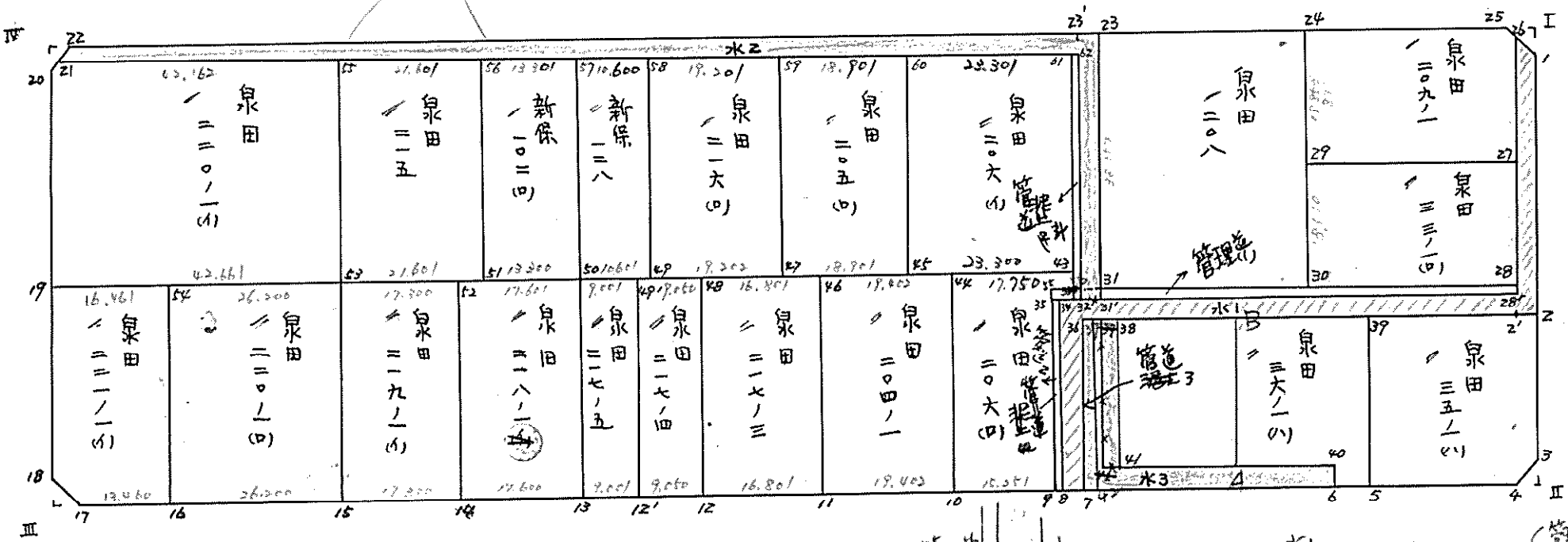
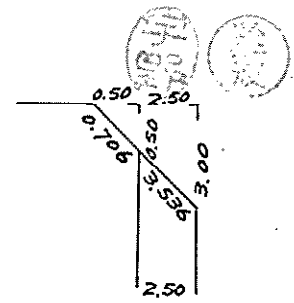


# 面地計算



注

BN0 ~~48~~ 48



管理道(1) 60.44  
 管理道(2)  
 管理道(4) 75.85  
 管理道(3)

水1  
 水2, 水3

16-1号線  
 16号線

16枚  
#4 - 1

面積計算書		工区	3	ブロック	8948	計測者		精算者		備考	泉田209-1 泉田33-1(口)			
点	①	②	③	④	⑤	⑥	③	×	⑤	②	×	⑥		
	X	X-(定数)	X <sub>n-1</sub> -X <sub>n+1</sub>	Y	Y-(定数)	Y <sub>n-1</sub> -Y <sub>n+1</sub>	+		-	+		-		
24	-152,429,442	<sup>-152400</sup> 29.447	-12.901	-37,744,253	<sup>-37700</sup> 44.253	-32.639	170.907	153		960.957	438			
25	-152,435,905	35.905	+7.061	-37,716,047	16.047	-28.581			113.307	267	1026.200	805		
26	-152,436,503	36.503	+19.480	-37,715,672	15.672	+3.949			305.290	560		144.150	347	
27	-152,455,385	55.385	+12.303	-37,719,996	19.996	+33.014			246.010	788		1828.480	390	
29	-152,448,806	48.806	-25.943	-37,748,686	48.686	+24.287	1263.060	898				1183.887	142	
							1233.968	251	664.609	215	1927.158	243	3156.517	879
							1169.359	636				1169.359	636	
											1/2 =	584.679	818	
27	-152,455,385	<sup>-152400</sup> 55.385	+24.622	-37,719,996	<sup>-37700</sup> 19.996	-24.558			492.341	512	1360.144	830		
28	-152,473,428	73.428	+11.458	-37,724,128	24.128	+32.820			276.458	624		2409.906	960	
30	-152,466,843	66.843	-24.622	-37,752,816	52.816	+24.558	1300.435	552				1641.530	394	
29	-152,448,806	48.806	-11.458	-37,748,686	48.686	-32.820	557.844	128			1601.812	920		
							1858.279	740	768.800	136	2965.957	750	4051.437	354
							1089.479	604				1089.479	604	
											1/2 =	544.739	802	

16  
44-

面積計算書										工区	ブロック	計測者	精算者	備考	泉田208 泉田35-1(八)
点	①	②	③	④	⑤	⑥	③ × ⑤	② × ⑥							
	X	X-(定数)	X <sub>n-1</sub> -X <sub>n+1</sub>	Y	Y-(定数)	Y <sub>n-1</sub> -Y <sub>n+1</sub>	+	-	+	-					
23	-152,422,520	-152400 22.520	-30.468	-37,774,461	-37700 74.461	-38.768	2268.677748		873.055360						
24	-152,429,442	29.442	+44.323	-37,744,253	44.253	-21.645		1861.425718	637.272090						
30	-152,466,843	66.843	+30.468	-37,752,816	52.816	+38.768		1609.197888		2591.369424					
31	-152,459,910	59.910	-44.323	-37,783,021	83.021	+21.645	3629.739783			1296.751950					
							5948.47531	3370.623607	1510.327450	3888.121374					
							2377.793924			2377.793924					
									1/2 = 1188.896962						
2	-152,477,400	-152400 77.400	+24.928	-37,722,473	-37700 22.473	-18.539		560.206944	1434.918600						
3	-152,497,040	97.040	+21.894	-37,726,970	26.970	+8.091		590.481180		785.150640					
4	-152,499,294	99.294	-2.356	-37,730,564	30.564	+23.705	72.008784			2353.764270					
5	-152,494,684	94.684	-27.182	-37,750,675	50.675	+14.945	1377.447850			1415.052380					
39	-152,472,112	72.112	-17.284	-37,745,509	45.509	-28.202	786.577556		2033.702624						
							2236.074180	1150.608124	3468.621224	4553.967290					
							1085.346066			1085.346066					
									1/2 = 542.673033						

16  
14-3

面積計算書		工区	ブロック	計算者	精算者	備考	泉田36-1(八) 泉田206(口)			
点	①	②	③	④	⑤	⑥	③ × ⑤	② × ⑥		
	X	X-(定数)	X <sub>n-1</sub> -X <sub>n+1</sub>	Y	Y-(定数)	Y <sub>n-1</sub> -Y <sub>n+1</sub>	+	-	+	-
		-152460			-37740					
5	-152,494,684	34.684	+21.243	-37,750,675	10.675	+10.966		226.769025		380.344744
6	-152,493,355	33.255	-3.810	-37,756,475	16.475	+5.434	62.769750			181.251070
40	-152,490,874	30.874	-9.663	-37,756,109	16.109	+30.966	155.661267			956.044284
41	-152,483,692	23.692	-27.328	-37,787,441	47.441	+26.720	1296.467648			633.050240
38	-152,463,546	3.546	-11.580	-37,782,829	42.829	-41.932	495.959220		142.690872	
39	-152,472,112	12.112	+31.138	-37,745,509	5.509	-32.154		171.539242	389.449248	
							2010.258485	378.208267	538.140120	2150.690338
							1612.550218			1612.550218
								1/2 = 806.275109		
9	-152,484,565	34.565	+21.615	-37,794,823	14.823	+20.595		320.399145		711.866175
10	-152,481,158	31.158	-33.155	-37,809,688	29.688	+8.052	984.305640			250.884216
44	-152,451,410	1.410	-25.784	-37,802,875	22.875	-24.114	589.809000		34.000740	
43	-152,455,374	5.374	+8.692	-37,785,574	5.574	-16.218	42.449208	87.155322		
33	-152,460,102	10.102	+4.169	-37,786,657	6.657	+5.519	27.753033			25.548938
35	-152,459,543	9.543	+24.463	-37,789,093	9.093	+8.166	222.442059			77.928138
							1574.114640	619.043445	121.156272	1076.227467
							955.071195			955.071195
								1/2 = 477.5355975		



16  
14-4

面積計算書		工区	ウ	ブロック	48	計測者	精算者	備考	泉田204-1	泉田217-3
点	①	②	③	④	⑤	⑥	③ × ⑤	② × ⑥		
	X	X-(定数)	X <sub>n-1</sub> -X <sub>n+1</sub>	Y	Y-(定数)	Y <sub>n-1</sub> -Y <sub>n+1</sub>	+ -	+ -	+ -	+ -
10	-152,481.158	-152440 41.158	+ 25.413	-37,809.688	-37800 9.688	+ 25.725	246.20144		1050.78956	
11	-152,476.823	36.823	- 34.081	-37,828.600	28.600	+ 12.099	974.716600		445.121477	
46	-152,447.077	7.077	- 25.413	-37,821.787	21.787	- 25.725	153.673031		182.055825	
44	-152,451.410	11.410	+ 34.081	-37,802.875	2.875	- 12.099	97.982875		138.049590	
							1528.389631		344.184019	320.105445
							1184.205612			1504.311027
										1184.205612
										1/2 = 592.102806
11	-152,476.823	-152440 36.823	+ 25.992	-37,828.600	-37820 8.600	+ 23.189	223.531200		853.888147	
12	-152,473.069	33.069	- 33.498	-37,844.976	24.976	+ 9.563	236.646048		316.238847	
48	-152,443.325	3.325	- 25.992	-37,838.163	18.163	- 23.189	472.092696		77.103425	
46	-152,447.077	7.077	+ 33.498	-37,821.787	1.787	- 9.563	19.860926		67.677351	
							1308.738744		283.392126	144.780776
							1025.346618			1170.127394
										1025.346618
										1/2 = 512.673309

16  
14 - 5

面積計算書		工区	3	ブロック	<del>48</del>	計算者	精算者	備考	泉田217-4 泉田217-5		
点	①	②	③	④	⑤	⑥	③ × ⑤		②	⑥	
	X	X-(定数)	X <sub>n-1</sub> -X <sub>n+1</sub>	Y	Y-(定数)	Y <sub>n-1</sub> -Y <sub>n+1</sub>	+	-	+	-	
12	-152,473.06P	-152440 33.06P	+ 27.722	-37,844.976	-37830 14.976	+ 15.634		410.164.672		517,000.746	
12'	-152,471.047	31.047	- 31.765	-37,853.797	23.797	+ 2.00P	755.911.205			62,373.423	
4P'	-152,441.304	1.304	- 27.722	-37,846.985	16.985	- 15.634	470.858.170			20,386.736	
4P	-152,443.325	3.325	+ 31.765	-37,838.163	8.163	- 2.00P		25P.297.695	6.67P.925		
								1226.76P.875	674.462.367	27.066.661	57P.374.16P
								552.307.508			552.307.508
									1/2 =	276.153.754	
12'	-152,471.047	-152430 41.047	+ 27.732	-37,853.797	-37840 13.797	+ 15.586		382.618.404		63P.758.542	
13	-152,469.036	39.036	- 31.753	-37,862.571	22.571	+ 1.962	716.6P6.962			76.588.632	
50	-152,439.294	9.294	- 27.732	-37,855.759	15.759	- 15.586	437.028.588			144.856.284	
4P'	-152,441.304	11.304	+ 31.753	-37,846.985	6.985	- 1.962		221.794.705	22.17P.448		
								1153.725.551	604.413.10P	167.024.732	716.347.174
								549.312.442			549.312.442
									1/2 =	274.656.221	

面積計算書		工区	ウ	ブロック	8948	計測者	精算者	備考	泉田218-1 泉田219-1(イ)	
点	①	②	③	④	⑤	⑥	③ × ⑤	② × ⑥	②	⑤
	X	X-(定数)	X <sub>n-1</sub> -X <sub>n+1</sub>	Y	Y-(定数)	Y <sub>n-1</sub> -Y <sub>n+1</sub>	+	-	+	-
13	-152,469,036	-152430 39.036	+ 25.810	-37,862,571	-37850 12.571	+ 23.967		324.457510		935.575812
14	-152,465,104	25.104	- 33.673	-37,879,726	29.726	+ 10.344	1000.963598			363.115776
52	-152,435,363	5.363	- 25.810	-37,872,915	22.915	- 23.967	591.436150		128.535021	
50	-152,439,294	9.294	+ 33.673	-37,855,759	5.759	- 10.344		193.922807	96.137136	
							1592.399748	518.380317	224.672157	1289.691588
							1074.019431			1074.019431
								1/2 =	537.009155	
14	-152,465,104	-152430 25.104	+ 25.876	-37,879,726	-37870 9.726	+ 23.674		251.669976		831.052096
15	-152,461,239	31.239	- 33.604	-37,896,589	26.589	+ 10.053	893.496756			314.045667
53	-152,431,500	1.500	- 25.876	-37,889,779	19.779	- 23.674	511.801404		35.511.000	
52	-152,435,363	5.363	+ 33.604	-37,872,915	2.915	- 10.053		97.955660	53.914239	
							1405.298160	349.625636	89.425239	1145.097763
							1055.672524			1055.672524
								1/2 =	527.836262	

面積計算書		工区	ウ	ブロック	8848	計測者	精算者	備考	泉田220-1(口) 泉田221-1(イ)		
点	①	②	③	④	⑤	⑥	③ × ⑤	② × ⑥			
	X	X-(定数)	X <sub>n-1</sub> -X <sub>n+1</sub>	Y	Y-(定数)	Y <sub>n-1</sub> -Y <sub>n+1</sub>	+ -	+ -	+ -	-	
15	-152,461.239	-152420 41.239	+23.885	-37,896.589	-37880 16.589	+32.347		396.228265		1333.957933	
16	-152,455.385	35.385	-35.590	-37,922.126	42.126	+18.728	1499.264340			662.690280	
54	-152,425.649	5.649	-23.885	-37,915.317	35.317	-32.347	843.546545		182.728203		
53	-152,431.500	11.500	+35.590	-37,889.779	9.779	-18.728	348.034610		215.372000		
							2342.810885	744.262895	398.100203	1996.648213	
							1598.548010			1598.548010	
								1/2 =	799.274005		
16	-152,455.385	-152420 35.385	+26.729	-37,922.126	-37910 12.126	+19.929		324.115854		705.187665	
17	-152,452.378	32.378	-6.601	-37,935.246	25.246	+15.375	166.648846			497.811750	
18	-152,448.784	28.784	-30.405	-37,937.501	27.501	-3.883	836.167905		111.768272		
19	-152,421.973	1.973	-23.135	-37,931.363	21.363	-22.184	494.233005		43.769032		
54	-152,425.649	5.649	+33.412	-37,915.317	5.317	-9.237		177.651604	32.179813		
							1497.049256	501.767458	207.717119	1202.999415	
							995.282298			995.282298	
								1/2 =	497.641149		

面積計算書		工区	ブロック	計算者	精算者	備考	泉田220-1(イ) 泉田215	
点	①	②	③	④	⑤	⑥	③ × ⑤	② × ⑥
	X	X-(定数)	X <sub>n-1</sub> -X <sub>n+1</sub>	Y	Y-(定数)	Y <sub>n-1</sub> -Y <sub>n+1</sub>	+ -	+ -
191	-152,421.973	-152,390 31.973	-40.244	-37,931.363	-37,880 51.363	+34.441	2067.042+771	1104.699123
201	-152,391.256	1.256	-31.092	-37,924.330	44.330	-7.631	1378.308360	9.584+361
211	-152,390.881	0.881	+9.042	-37,923.732	43.732	-41.695	294.424744,36.733 294	
221	-152,400.298	10.298	+40.619	-37,882.634	2.634	-33.953	107.031064,349.647994	
231	-152,431.500	41.500	+21.675	-37,889.779	9.779	+48.728	211.949824	2022.212000
							3444.360932	714.415634,394.964824,3126.911123
							2730.944298	2730.944298
								1/2 = 1365.472649
241	-152,400.298	-152,400 0.298	-26.377	-37,882.634	-37,860 22.634	-28.199	197.043394	8.403302
251	-152,404.123	5.123	+36.026	-37,861.480	1.580	-13.912	56.921080,71.271176	
261	-152,436.324	36.324	+26.377	-37,868.723	8.723	+28.199	230.086571	1024.300476
271	-152,431.500	31.500	-36.026	-37,889.779	29.779	+13.912	1072.818244	438.228000
							1669.861649,287.007651	79.674478,1462.528476
							1382.843998	1382.843998
								1/2 = 691.426999

面積計算書		工区	ブロック	計算者	精算者	備考	新保102(口) 新保128		
点	①	②	③	④	⑤	⑥	③ × ⑤	② × ⑥	
	X	X-(定数)	X <sub>n-1</sub> -X <sub>n+1</sub>	Y	Y-(定数)	Y <sub>n-1</sub> -Y <sub>n+1</sub>	+	-	
56.	-152,405.123	-152,400	-28.230	-37,861.589	-37,860	21.580	20.108	609.203400	103.013284
57.	-152,408.094	8.094	+34.171	-37,848.615	8.615	-5.821		294.388165	47.115174
50.	-152,439.294	39.294	+28.230	-37,855.759	15.759	20.108		444.876570	790.123752
41.	-152,436.324	36.324	-34.171	-37,868.723	28.723	5.821		981.493633	211.442004
								1590.697033	150.128458
								851.437298	851.437298
									1/2 = 425.718649
57.	-152,408.094	-152,400	-28.833	-37,848.615	-37,830	18.615	17.476	536.726295	141.450744
58.	-152,410.461	10.461	+33.568	-37,838.283	8.283	-3.190		278.043744	33.370590
49.	-152,441.662	41.662	+28.833	-37,845.425	15.425	17.476		444.749025	728.085112
50.	-152,439.294	39.294	-33.568	-37,855.759	25.759	3.190		864.678112	125.347860
								1401.404607	722.792769
								678.611638	678.611638
									1/2 = 339.305819

面積計算書

工区

3

ブロック

~~18~~

計算者

定

測定者



備考

泉田216(口) 泉田205(口)

点	①	②	③	④	⑤	⑥	③ × ⑤	② × ⑥		
	X	X-(定数)	X <sub>n-1</sub> -X <sub>n+1</sub>	Y	Y-(定数)	Y <sub>n-1</sub> -Y <sub>n+1</sub>	+ -	+ -		
48	-152,410.461	-152,410	-26.912	-37,838.283	-37,810	28.283	25.848	761.152.096	11.920.438	
49	-152,414.750	4.750	+35.489	-37,819.467	9.467	11.575		339.523.263	54.981.250	
47	-152,444.950	35.950	+26.912	-37,826.708	16.708	+25.848		449.645.696	929.595.100	
49	-152,441.662	31.662	-35.489	-37,845.425	35.425	+11.575	1247.197.825		366.487.650	
							2018.247.921	789.168.959	66.901.988	1296.682.750
							1229.180.962			1229.180.962
									1/2 =	614.590.481
49	-152,414.750	-152,410	-26.979	-37,819.467	-37,800	19.467	25.465	527.898.093	121.433.750	
60	-152,418.971	8.971	+35.421	-37,801.143	1.143	-11.283		40.486.203	101.219.793	
45	-152,450.171	40.171	+26.979	-37,808.284	8.284	+25.565		223.494.036	1026.971.615	
47	-152,444.950	35.950	-35.421	-37,826.708	26.708	+11.283	946.024.068		405.623.850	
							1473.922.161	263.980.239	222.653.543	1432.591.465
							1209.941.922			1209.941.922
									1/2 =	604.970.961

面積計算書										工区	ブロック	計算者	精算者	備考	
										3		<del>2748</del>			泉田206(イ) 管理道(1)
点	①	②	③	④	⑤	⑥	③ × ⑤		② × ⑥						
	X	X-(定数)	X <sub>n-1</sub> -X <sub>n+1</sub>	Y	Y-(定数)	Y <sub>n-1</sub> -Y <sub>n+1</sub>	+	-	+	-					
60	-152, 418.9714	-152, 410 8.9714	-25.9944	-37, 801.1431	-37, 770 31.1431	-29.8433	809.562285			267.811263					
61	-152, 424.1761	14.1769 + 36.403		-37, 778.434	8.4314 - 15.569			306.913693		220.706144					
43	-152, 455.3741	45.3749 + 25.994		-37, 785.574	15.5749 + 29.843			404.846130		1354.550022					
45	-152, 450.1713	40.1711 - 36.403		-37, 808.284	38.2844 + 15.569		1393.652452			625.422299					
							2203.214737	711.759823	488.517407	1979.972321					
							1491.454914			1491.454914					
										1/2 = 745.727457					
28	-152, 473.4282	-152, 450 23.4282	+ 14.4931	-37, 724.1284	-37, 720 4.1284	-58.6694		59.827104	1396.497.332						
28'	-152, 474.4031	24.4034 - 12.543		-37, 724.3121	4.3121 + 59.116			54.587136		1442.607748					
31	-152, 460.8854	10.8854 - 14.493		-37, 783.2441	63.2444 + 58.669		916.595092			628.612065					
31'	-152, 459.9101	9.9101 + 12.543		-37, 783.0211	63.0211 - 59.116			790.422403	525.839560						
							971.122428	850.299507	1960.326892	2081.219813					
							120.882921			120.882921					
										1/2 = 60.4414605					



# 面積計算書

工区 3  
ブロック ~~88~~ 48  
計算者 守  
精算者  
備考 管理道 水  
路

管理道 (4)

水路 (1)

点	① X	② X-(定数)	③ X <sub>n-1</sub> -X <sub>n+1</sub>	④ Y	⑤ Y-(定数)	⑥ Y <sub>n-1</sub> -Y <sub>n+1</sub>	③ +	×	⑤ -	② +	×	⑥ -
8	-152,484,788	34.788	+24.798	-37,793,848	13,848	+6,704			343,402,704			233,218,752
9	-152,484,565	34.565	+25.245	-37,794,823	14,823	-4,755	374,206,635		164,356,575			
35	-152,459,543	9.543	-24.798	-37,789,073	9,093	-6,170	225,488,214		63,976,272			
34	-152,459,767	9.767	+25.245	-37,788,119	8,119	+4,755			204,964,155			46,442,085
							599,694,849		548,366,859		228,332,847	279,660,837
							51,227,990					51,327,990
									1/2 = 25,663,995			
26	-152,436,503	6.503	-34.904	-37,715,672	5,672	-10,559	197,975,488		68,665,177			
1	-152,439,499	9.499	+40.897	-37,713,793	3,793	+6,801			155,122,321			64,602,699
2	-152,477,400	47.400	+23.264	-37,722,473	12,473	+72,447			290,171,872			3433,987,800
36	-152,462,763	32.763	+7.947	-37,786,240	76,240	+68,938			605,879,280			2258,615,694
7	-152,485,347	55.347	+22,025	-37,791,411	81,411	+7,608			1793,077,275			421,079,976
8	-152,484,788	54.788	-25.580	-37,793,848	83,848	-3,292	2144,831,840		180,362,096			
34	-152,459,767	29.767	-10,385	-37,788,119	78,119	-69,496	811,265,815		2068,687,432			
28	-152,474,403	44.403	+23.264	-37,724,352	14,352	+72,447	333,884,928		3216,864,141			
							3487,958,071		2844,250,748		534,578,846	6178,286,169
							643,707,323					643,707,323

1/2 = 321,853,661.5

# 面積計算書

工区

3

ブロック

48

計算者



精算者



備考

泉田206(口) 管理道(2)

点	①	②	③	④	⑤	⑥	③ ×	⑤	② ×	⑥
	X	X-(定数)	X <sub>n-1</sub> -X <sub>n+1</sub>	Y	Y-(定数)	Y <sub>n-1</sub> -Y <sub>n+1</sub>	+	-	+	-
		-152,450			-37,780					
44	-152,451.410	1.410	-25.784	-37,802.875	22.875	-24.114	589,809,000		34,000,740	
43	-152,455.374	5.374	+ 7.717	-37,785.574	5.574	- 16.441		43,014,558	88,353,934	
56	-152,459.127	9.127	+ 3.194	-37,786.434	6.434	+ 3.296		20,550,196		30,082,592
55	-152,458.568	8.568	+ 25.438	-37,788.870	8.870	+ 8.389		225,635,060		71,876,952
9	-152,484.565	34.565	+ 22.590	-37,794.823	14.823	+ 20.818		334,857,570		719,574,170
10	-152,481.158	31.158	- 33.155	-37,809.688	29.688	+ 8.052	984,305,640		250,884,216	
							1574,114,640	- 624,051,384	122,354,674	1072,417,930
							950,063,256		950,063,256	
								1/2 = 475,031		
		-152,400			-37,770					
61	-152,424.176	24.176	- 34.728	-37,778.431	8.431	- 8.978	292,791,768		217,052,128	
62	-152,424.399	24.399	+ 36.150	-37,777.456	7.456	+ 7.251		269,534,400		176,917,149
32	-152,460.326	60.326	+ 35.368	-37,785.682	15.682	+ 10.663		554,640,976		643,256,138
34	-152,459.767	59.767	+ 24.462	-37,788.119	18.119	+ 8.166		443,226,978		488,057,322
8	-152,484.788	84.788	+ 24.798	-37,793.848	23.848	+ 6.704		591,382,704		568,418,752
9	-152,484.565	84.565	- 26.220	-37,794.823	24.823	- 4.978	650,859,060		420,964,570	
55	-152,458.568	58.568	- 25.438	-37,788.870	18.870	- 8.389	480,015,060		491,326,952	
56	-152,459.127	59.127	- 34.392	-37,786.434	16.434	- 10.439	565,198,128		617,226,753	
							1988,864,016	- 7858,785,058	1746,570,403	1876,649,361
							130,078,958		130,078,958	

1/2 = 65.0394

# 面積計算書

工区

3

ブロック

~~48~~

計算者

守

精算者



水路 (2)  
水路 (3)

水路 (2)

水路 (3)

点	① X	② X-(定数) -152,320	③ X <sub>n-1</sub> -X <sub>n+1</sub>	④ Y	⑤ Y-(定数) -37,770	⑥ Y <sub>n-1</sub> -Y <sub>n+1</sub>	③ × ⑤ +	⑤ × ⑥ -
21	-152,370.881	10.881	-34.377	-37,723.732	-143.732	+143.221	1541.651604	1549.040561
22	-152,389.002	9.002	+31.639	-37,720.737	150.737	-149.271	4769.167943	4343.423727
23	-152,422.520	42.520	+71.883	-37,774.464	4.464	-137.493	320.670063	4846.202360
31	-152,460.885	80.885	+37.806	-37,783.244	13.244	11.221	520.702664	907.610585
32	-152,460.326	80.326	-36.486	-37,724.682	14.682	-5.788	572.173452	464.926888
62	-152,424.379	44.379	-69.445	-37,777.456	7.456	+138.050	517.781920	6129.281950
							6431.606976	4590.540670
							941.066306	941.066306
							Y <sub>2</sub> = 470.533153	
6	-152,493.345	33.345	-4.527	-37,746.474	6.474	+34.302	34.787325	1177.498210
7	-152,424.347	24.347	-30.592	-37,791.414	41.414	+29.765	1266.845312	744.453454
36	-152,462.763	2.763	-22.024	-37,786.248	36.248	-7.608	798.186000	21.020904
37	-152,463.322	3.322	+20.706	-37,783.803	33.803	+2.176	699.924918	7.228672
42	-152,483.469	23.469	+27.542	-37,788.416	38.416	+27.696	1058.437632	950.4266
40	-152,490.874	30.874	+9.886	-37,746.109	6.109	-31.941	10.293576	986.146234
							2100.818637	1818.74612
							1647.117824	1739.180337
							282.062513	282.062513
							Y <sub>3</sub> = 141.0312565	

# 面積計算書

工区

ブロック

48

計算者

精算者

備考

水

点	①	②	③	④	⑤	⑥	③	×	⑤	②	×	⑥
	X	X-(定数)	X <sub>n-1</sub> -X <sub>n</sub>	Y	Y-(定数)	Y <sub>n-1</sub> -Y <sub>n</sub>	+	-	+	-		
38'	-152. 465.008	-152.460 5.008	+19.243	-37 783.164	-37.750 33.164	+1.839			638.174852			9.299712
41	483.692	23.692	+25.866	787.441	37.441	-27.055			968.448906	640.987060		
40	490.874	30.874	+9.661	756.109	6.109	-30.966			59.019049	956.044284		
6	493.355	33.353	-5.303	756.475	6.475	+34.327	34.336925					1144.908431
42	485.571	25.571	-28.904	790.436	40.436	+29.127	1168.762144					944.896517
37'	464.449	4.449	-20.363	785.602	33.602	-7.272	732.083926			32.353128		
						15.793	1935.182995		1665.642807	1629.384472		1898.924660
							269.540188					269.540188
							-1/2=134.770094					

# 面積計算書

工区

ブロック

4B

計算者

精算者

備考

点	①	②	③	④	⑤	⑥	③	×	⑤	②	×	⑥	
	X	X-(定数)	X <sub>n-1</sub> -X <sub>n+1</sub>	Y	Y-(定数)	Y <sub>n-1</sub> -Y <sub>n+1</sub>	+	-	+	-			
38	-152 463.546	-152.460 3.546	+2.245	-37 782.829	-37.780 2.829	-3.076			6.351105	10.907496			
38'	465.008	3.008	+0.903	783.164	3.164	+2.773			2.857092			13.987184	
37'	464.449	4.449	+20.563	785.602	5.602	+7.272			115.193926			32.353128	
42	485.571	25.571	+20.898	790.436	10.436	+5.809			218.091528			148.541939	
7	485.347	25.347	-22.808	791.411	11.411	-4.196	260.262088			106.356012			
36	462.763	2.763	-21.807	786.240	6.240	-8.382	136.038240			23.712066			
			44.609						13.354	396.300328	342.493651	140.975574	194.782251
									53.806677				53.806677
									$\frac{1}{2} = 26.9033385$				

面積計算書

工区

3

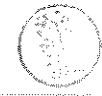
ブロック

~~89~~48

計算者



精算者



備考 (スミキリ)

I  
II  
III

点	① X	② X-(定数)	③ X <sub>n-1</sub> -X <sub>n+1</sub>	④ Y	⑤ Y-(定数)	⑥ Y <sub>n-1</sub> -Y <sub>n+1</sub>	③ +	×	⑤ -	② +	×	⑥ -
I	-152,436.575	<sup>-152430</sup> 6.575	+3.594	-37,713.120	<sup>-37710</sup> 3.123	-2.254			11.224062			14.820050
1	-152,439.499	9.499	-0.670	-37,713.793	3.793	+2.924	2.541310					27.775076
25	-152,435.905	5.905	-2.924	-37,716.047	6.047	-0.670	17.681428					3.956350
							20.222738		11.224062		18.776400	27.775076
							8.998676					8.998676
											1/2 = 4.499338	
II	-152,499.964	<sup>-152490</sup> 9.964	-2.254	-37,727.640	<sup>-37720</sup> 7.640	-3.594	17.220560					35.810616
3	-152,497.040	7.040	-0.670	-37,726.970	6.970	+2.924	4.669900					20.582960
4	-152,499.294	9.294	+2.924	-37,730.564	10.564	+0.670			30.889136			6.226980
							21.890460		30.889136		35.810616	26.811940
												8.998676
												8.998676
												1/2 = 4.499338
III	-152,451.708	<sup>-152440</sup> 11.708	+3.594	-37,938.170	<sup>-37930</sup> 8.170	-2.254			29.362980			26.401540
17	-152,452.378	12.378	-2.924	-37,935.246	5.246	-0.669	15.339304					8.280882
18	-152,448.784	8.784	-0.670	-37,937.501	7.501	+2.924	5.025670					25.684416
							20.362974		29.362980		34.682422	25.684416
												8.998006
												8.998006
												1/2 = 4.499003

スミキリ I

II

III

面積計算書

工区

3

ブロック

8948

計算者



精算者



備考

橋本 下

スキャン

点	①	②	③	④	⑤	⑥	③ × ⑤		② × ⑥	
	X	X-(定数)	X <sub>n-1</sub> -X <sub>n+1</sub>	Y	Y-(定数)	Y <sub>n-1</sub> -Y <sub>n+1</sub>	+	-	+	-
IV	-152,388.332	-152380 8.332	+2.244	-27,923.661	-37920 3.661	+2.593		8.251894		29,936876
20	-152,391.256	11.256	+0.670	-37,924.330	4.330	-2.924		2-901100	32.912544	
22	-152,389.002	9.002	-2.924	-37,920.737	0.737	-0.669	2.154988		6.022338	
							2.154988	11.152994	38.934882	29.936876
								8.998006	8.998006	
									1/2 = 4.499003	

計年月算日

計算者



検査者



B.NO. 48

各筆面積計算書

2枚-1

地番	算式	隅切	地積	摘要
	泉田 209 (1)		584.67	
	泉田 339 (10)		544.73	
	泉田 208		1,188.89	
	泉田 359 (11)		542.67	
	泉田 369 (11)		806.27	
	泉田 206 (12)		475.03 <del>477.53</del>	
	泉田 2049 (1)		592.10	
	泉田 2179 (3)		512.67	
	泉田 2179 (4)		276.15	
	泉田 2179 (5)		274.65	
	泉田 2189 (1)		537.00	
	泉田 2199 (1)		527.83	
	泉田 2209 (10)		799.27	
	泉田 2219 (1)		497.64	
	泉田 2209 (1)		1,365.47	
	泉田 215		691.42	
	新保 102 (10)		425.71	
	新保 128		339.30	
	泉田 216 (10)		614.59	
	泉田 205 (10)		604.97	
	泉田 206 (1)		745.72	
	管理道 (1)		60.44	
	" (2)		29.18 <del>65.03</del> <del>36.86</del>	
	" (3)		<del>33.17</del> 26.90 <del>20.66</del>	



計年月  
算日

計算者



検査者

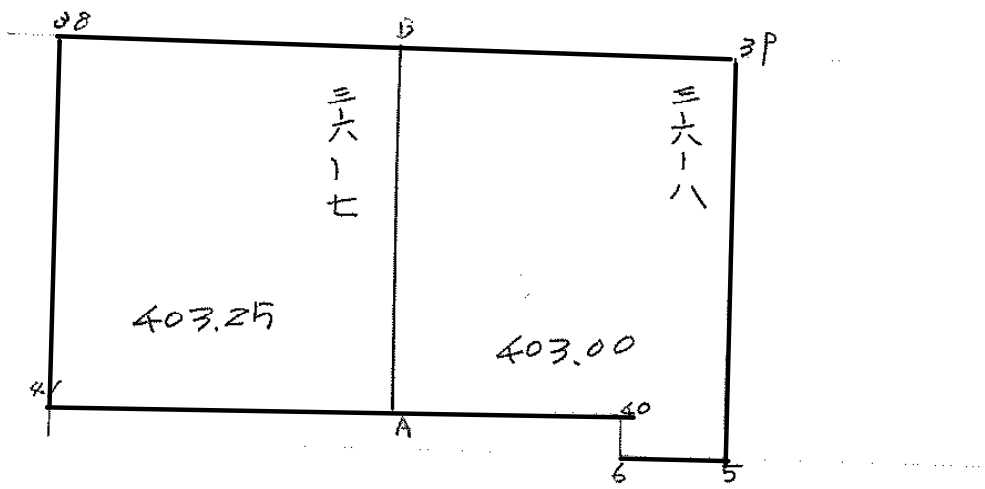


2枚-2

B.NO. 48

各筆面積計算書

地番	算式	隅切	地積	摘要
	管理道 (4)		35.85	
	<del>管理道 (4)</del>		<del>25.66</del>	
	水路 (1)		324.35	
			321.85	
			468.03	
			470.53	
			138.53	34.77
			141.03	219.07
	計		30.7	
	全体		14,026.28	
			14,026.36	
		差	-0.086	
	換地		12,949.25	
	管理道		152.374	
			143.62	
	水路		927.15	
			933.41	





# 面積計算書

工区

3

ブロック

48

計算者

精算者

備考

尺 36-8

点	①	②	③	④	⑤	⑥	③ × ⑤	② × ⑥
	X	X - (定数)	X <sub>n-1</sub> - X <sub>n,1</sub>	Y	Y - (定数)	Y <sub>n-1</sub> - Y <sub>n,1</sub>	+	-
B	467.912	7.912	-15.940	263.80P	27.74P			377.515460
3P	472.112	12.112	+26.772	245.50P	5.50P		47.686P48	
5	494.884	26.684	+21.243	250.675	10.675		226.76P075	
6	493.355	23.355	-7.810	256.675	16.475			62.769750
40	490.874	20.874	-5.303	256.10P	16.10P			85.426027
A	488.052	28.052	-22.962	268.41P	28.41P			652.557078
							374.255P73	1180.268715
								806.012342
						1/2 = 407.00		