

**BLOCK NO. 63**

**街 区 計 算**

街区略図

工区

3

ブロック

63

記入者

点検者



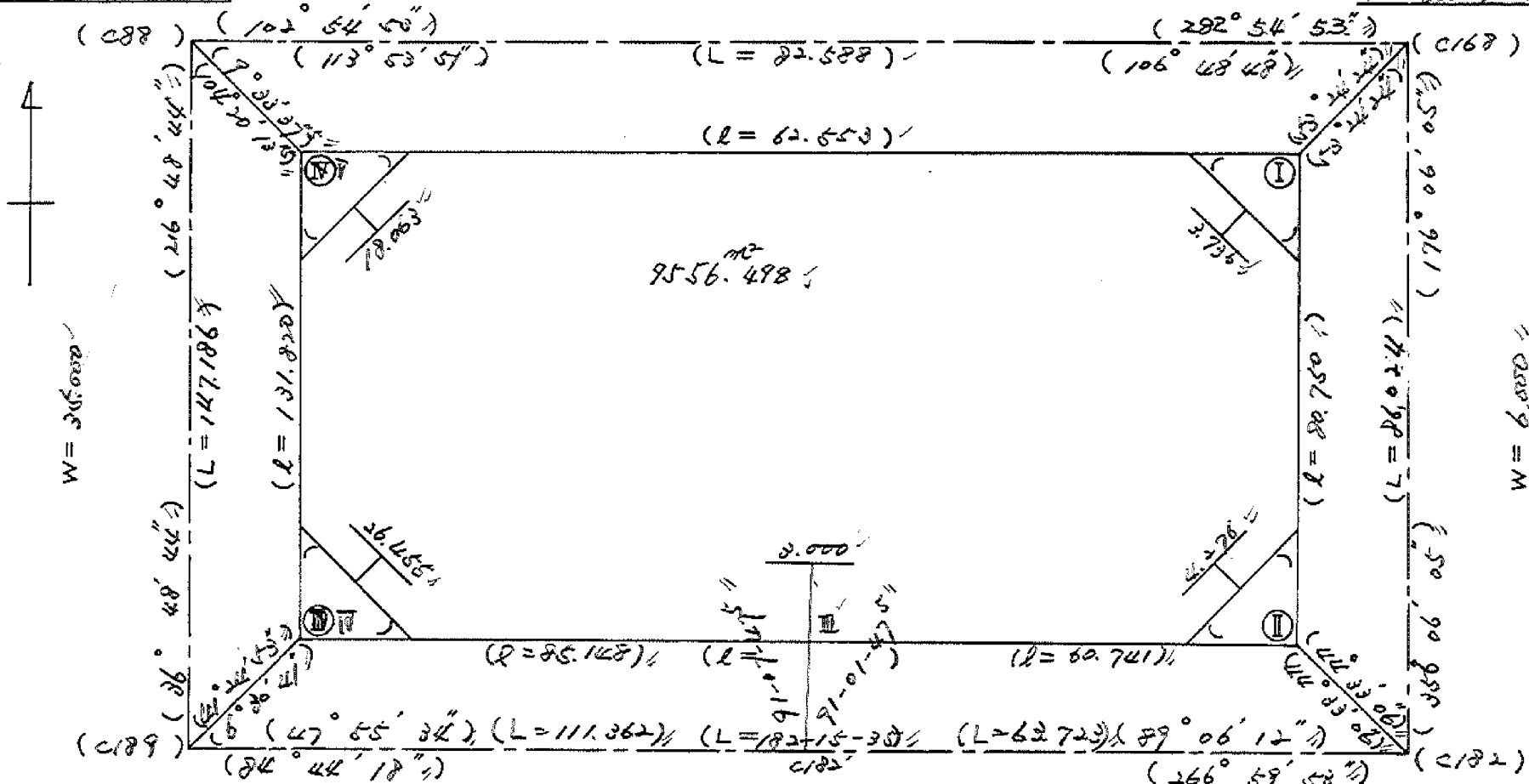
$X = -152,405.440$

$Y = -38,157.371$

$W = 6.000$

$X = -152,423.899$

$Y = -38,072.268$



$X = -152,523.278$

$Y = -38,241.564$

$X = -152,513.063$   
 $Y = -38,130.661$   
 $W = 6.000$

$X = -152,507.724$

$Y = -38,067.019$

# 面積計算書

工区

3

ブロック

~~9-63~~

計算者

精算者



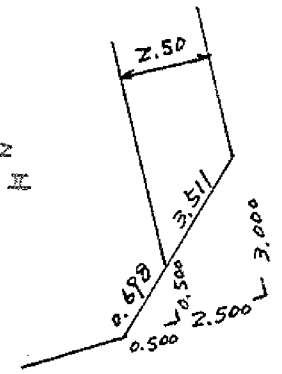
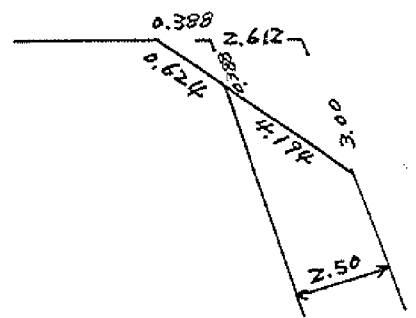
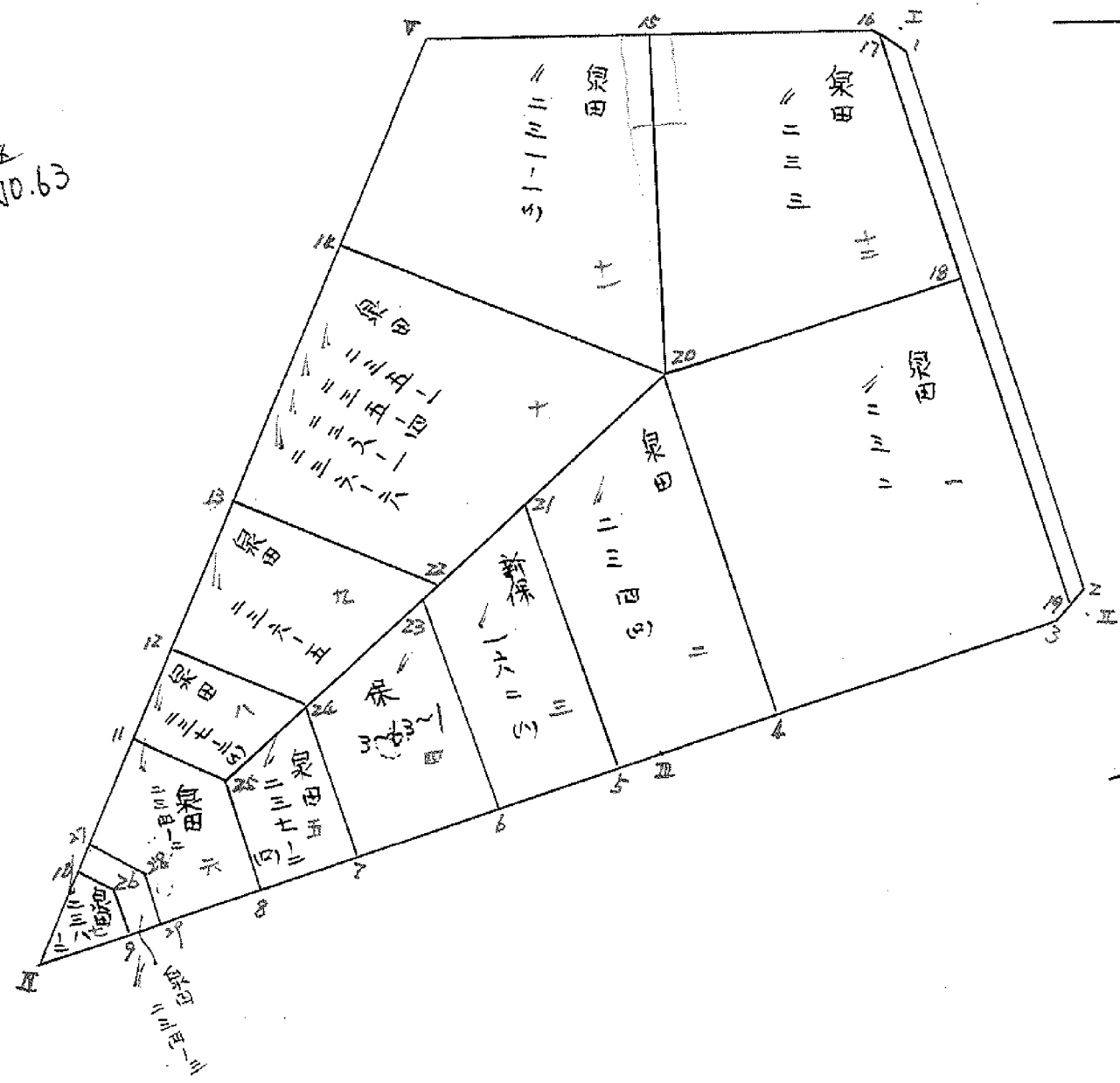
備考

全体

点	①	②	③	④	⑤	⑥	③ × ⑤		② × ⑥	
	X	X - (定数)	X <sub>n-1</sub> - X <sub>n+1</sub>	Y	Y - (定数)	Y <sub>n-1</sub> - Y <sub>n+1</sub>	+	-	+	-
I	-152,426.345	<sup>+52.400</sup> -26.325	+94.543	-38,075.709	<sup>-38.000</sup> -75.709	-66.461			7157.755987	1749.585825
II	-152,506.888	-106.888	+83.746	-38,070.219	-70.219	+55.168			5880.560374	5896.797184
III	-152,510.071	-110.071	+10.992	-38,130.877	-130.877	+145.447			1438.599884	16009.496737
IV	-152,517.880	-117.880	-97.726	-38,215.666	-215.666	+5.803	21076.175516			684.057640
V	-152,410.345	-12.345	-91.555	-38,106.680	-136.680	-139.957	12513.737400			1727.769165
							33589.912916	14476.916345	3477.354990	22590.351561
							2) 19112.996571			19112.996571
							9556.498285			
							ズキリ I II			
							9.556.49 - (4.31 + 4.50) = 9.547.68			

# 圖地計算

312  
BND.63



面積計算書						工区	ブロック	計算者	精算者	備考
							63			1. 泉田 232. 2. 泉田 236(4)
点	①	②	③	④	⑤	⑥	③ × ⑤	② × ⑥		
	X	X-(定数)	X <sub>n-1</sub> -X <sub>n+1</sub>	Y	Y-(定数)	Y <sub>n-1</sub> -Y <sub>n+1</sub>	+	-	+	-
18	-152.657.775"	-152.450 - 9.795"	+ 44.419"	-38.075.925"	-38.050 - 25.935"	- 43.132"		1152.006765	422.477940	
19	-152.506.522"	- 56.522"	+ 47.250"	-38.072.762"	- 22.752"	- 2.720"		1075.032000	153.739840	
3	-152.507.065"	- 57.045"	+ 2.536"	-38.073.215"	- 23.215"	+ 38.817"		58.873240		2214.315765
4	-152.509.058"	- 59.058"	+ 44.942"	-38.111.569"	- 61.569"	+ 42.669"	2767.033998			2519.945802
20	-152.462.103"	- 12.103"	+ 49.263"	-38.115.884"	- 65.884"	- 35.634"	3245.643492		431.278302	
							6012.677490	2285.912005	1007.496082	4734.261567
							3726.765485			3726.765485
								1/2 = 1863.380		
20	-152.462.103"	-152.450 - 12.103"	+ 34.742"	-38.115.884"	-38.100 - 15.884"	- 26.157"		551.841928	316.699201	
4	-152.509.058"	- 59.058"	+ 47.968"	-38.111.569"	- 11.569"	+ 14.993"		554.941792		885.456594
III	-152.510.071"	- 60.071"	+ 1.339"	-38.130.877"	- 30.877"	+ 22.844"		41.344303		1372.261924
5	-152.510.071"	- 60.397"	+ 35.755"	-38.136.413"	- 36.413"	+ 6.859"	1239.436815			474.263023
21	-152.476.316"	- 24.316"	+ 48.294"	-38.127.736"	- 37.736"	- 18.529"	1822.422384		450.551164	
							3052.859199	1148.128023	767.250365	2671.981541
							1904.731176			1904.731176
								1/2 = 952.36		

面積計算書		工区	ブロック	図番	計算者	精算者	備考	3. 新保 162.01		4. 未指定地(保) 3-63-1	
点	①	②	③	④	⑤	⑥	③ × ⑤	② × ⑥	+	-	
	X	X-(定数)	X <sub>n-1</sub> -X <sub>n+1</sub>	Y	Y-(定数)	Y <sub>n-1</sub> -Y <sub>n+1</sub>	+	-	+	-	
21	-152.476.316"	-152.450 -24.316"	+28.160"	-38.137.736"	-38.100 -37.736"	-17.492"			1062.645760		425.335472
5	-152.510.397"	-60.397"	+37.441"	-38.136.613"	-34.413"	+11.448"			1288.457133		691.424856
6	-152.511.757"	-61.757"	-28.160"	-38.169.186"	-49.184"	+17.492"	1385.021440				1080.253444
23	-152.682.237"	-32.237"	+37.441"	-38.151.905"	-51.905"	-11.448"	1943.375105				369.049176
							3328.396545	2351.102893		794.384648	1771.678300
							977.293652				977.293652
										1/2 = 488.64	
23	-152.682.237"	-152.450 -32.237"	+18.954"	-38.151.905"	-38.100 -51.905"	-21.623"			983.807370		697.060651
6	-152.511.757"	-61.757"	+31.336"	-38.169.186"	-49.184"	+16.994"			1541.229824		1049.498458
7	-152.513.573"	-63.573"	-18.954"	-38.168.899"	-68.899"	+21.623"	1305.911646				1374.638979
24	-152.682.807"	-42.807"	-31.336"	-38.170.807"	-70.807"	+16.994"	2218.808152				727.394182
							3524.719798	2525.037194		1424.454833	2424.137437
							999.682604				999.682604
										1/2 = 499.84	

分筆後の座標なし

面積計算書		工区	ル	ブロック	63	計算者	精算者	備考	5. 泉田 237-2 (10)	6. 泉田 234 (4)
点	①	②	③	④	⑤	⑥	③	⑤	②	⑥
	X	X-(定数)	X <sub>n-1</sub> -X <sub>n+1</sub>	Y	Y-(定数)	Y <sub>n-1</sub> -Y <sub>n+1</sub>	+	-	+	-
24	-152.442.803'	-152.450 -42.803'	+13.560'	-38.170.807"	-38.150 -20.807'	-14.806"			282.142920,	633.741218,
7	-152.510.573'	-63.573'	+22.008'	-38.168.844"	-18.899'	+11.538"			415.929192,	733.505274,
8	-152.516.811'	-64.811'	-13.560'	-38.182.345"	-32.345'	+14.806"	438.598200,			959.591666,
25	-152.500.013'	-50.013'	-22.008'	-38.183.705"	-33.705'	-11.538"	741.779640,		577.049994,	
							1180.377840,	698.072112,	1210.791212,	1693.096940,
							482.305728"			482.305728,
									1/2 = 241.15"	
<del>8</del>	<del>-152.516.811'</del>	<del>-152.450 -64.811'</del>	<del>+16.486'</del>	<del>-38.182.345"</del>	<del>-38.150 -32.345'</del>	<del>+16.968"</del>			533.239670,	1099.713048,
<del>P</del>	<del>-152.516.644'</del>	<del>-66.499'</del>	<del>-4.971'</del>	<del>-38.200.673"</del>	<del>-50.673'</del>	<del>+18.939"</del>	251.895483,			1259.424561,
<del>26</del>	<del>-152.509.860'</del>	<del>-59.840'</del>	<del>-10.671'</del>	<del>-38.201.286"</del>	<del>-51.284'</del>	<del>+5.973"</del>	547.251564,			357.424320,
<del>10</del>	<del>-152.505.828'</del>	<del>-55.828'</del>	<del>-18.743'</del>	<del>-38.206.666"</del>	<del>56.646'</del>	<del>-5.664"</del>	1061.715978,		316.209792,	
<del>11</del>	<del>-152.641.097'</del>	<del>-41.097'</del>	<del>-5.815'</del>	<del>-38.195.620"</del>	<del>-45.620'</del>	<del>-22.941"</del>	215.280300,		942.806277,	
<del>25</del>	<del>-152.500.013'</del>	<del>-50.013'</del>	<del>+23.714'</del>	<del>-38.183.705"</del>	<del>-33.705'</del>	<del>-13.275"</del>		799.280370,	663.922575,	
							2126.143325,	1332.520040,	1922.938644,	2716.561929,
							793.623285"			793.623285,
									1/2 = 396.818	



面積計算書

工区 3 ブロック 63 計測者 精原者 備考 梨田 234-3  
 " 234-2

点	①	②	③	④	⑤	⑥	③	×	⑤	②	×	⑥	
	X	X-(定数)	X <sub>n-1</sub> -X <sub>n+1</sub>	Y	Y-(定数)	Y <sub>n-1</sub> -Y <sub>n+1</sub>	+	-	+	-			
9	-152, 516.499	-152.500	-38, -6.260	-38, 200.673	-38.190	10.673	+	4.943	66.812980			81.554557	
26	509.840	9.840	-10.671	201.284	11.284	+	5.973	120.411564				38.774320	
10	505.828	5.828	-7.495	206.646	16.646	+	2.755	124.761770				16.056140	
27	502.345	2.345	+1.688	204.039	14.039	-	9.517		23.697832	22.317365			
28	507.516	7.516	+13.735	197.129	7.129	-	7.698		98.059395	57.858168			
29	516.100	16.100	+8.983	196.341	6.341	+	3.544		36.961203			57.058400	
												311.986314	178.718430
												80.175533	213.443417
												133.267884	133.267884
												1/2 = 66.633942	
11	-152, 491.097	-152.490	-38, -2.332	-38, 195.620	-38.180	15.620	-	20.336	36.425840			22.308392	
25	500.013	10.013	+23.714	183.705	3.703	-	13.275		87.812942	132.922575			
8	514.811	24.811	+16.087	182.345	2.345	+	12.638		37.724015			313.561418	
29	516.100	26.100	-7.295	196.341	16.341	+	14.784		119.207595			385.862400	
28	507.516	17.516	-13.735	197.129	17.129	+	7.698		235.609395			134.838168	
27	502.345	12.345	-16.419	204.039	24.039	-	1.509		394.696341			18.628605	
												785.939171	125.536957
												173.859772	834.261986
												660.402214	660.402214

1/2 330.201107

面積計算書		工区	ブロック	図番	計算者	精算者	備考			
			メ	63			7.泉田 238-2 8.泉田 237-2(4)			
点	①	②	③	④	⑤	⑥	③ × ⑤	② × ⑥		
	X	X-(定数)	X <sub>n-1</sub> -X <sub>n+1</sub>	Y	Y-(定数)	Y <sub>n-1</sub> -Y <sub>n+1</sub>	+	-	+	-
9	-152.516.694	-152.500 -16.499	+ 8.040	-38.200.673	-38.200 - 0.673	+ 14.382		5.410920		277.288618
II	-152.517.890	-17.880	-10.671	-38.215.666	-15.666	+ 5.973	167.171886			106.797240
10	-152.505.828	- 5.828	- 8.040	-38.206.666	- 6.646	-14.382	53.433840		83.818296	
Z6	-152.509.860	- 9.840	+10.671	-38.201.286	- 1.286	- 5.973		13.701564	58.774320	
							220.605726	19.112484	142.592616	344.085858
							201.493242			201.493242
								1/2 = 100.746		
11	-152.691.097	-152.650 -41.097	+19.726	-38.145.620	-38.150 -45.620	+ 3.825	899.900120			157.196025
12	-152.680.287	-30.287	+1.706	-38.187.530	-37.530	-24.813		64.026180	757.511331	
24	-152.692.803	-42.803	+19.726	-38.170.807	-20.807	- 3.825		410.438882	163.721475	
25	-152.500.013	-50.013	-1.706	-38.183.705	-33.705	+24.813	57.500730			1240.972569
							957.400850	474.465062	915.232806	1398.168394
							482.935788			482.935788
								1/2 = 241.467894		

面積計算書		工区	ブロック	計算者	精算者	備考				
		ウ		63		9.象田.226-5 10.象田.225-1 226-1 225-4 226-6				
点	① X	② X-(定数)	③ X <sub>n-1</sub> -X <sub>n+1</sub>	④ Y	⑤ Y-(定数)	⑥ Y <sub>n-1</sub> -Y <sub>n+1</sub>	③ × ⑤ +	③ × ⑤ -	② × ⑥ +	② × ⑥ -
12	-152.480.287	-152.400 20.227	-29.809	-38.187.530	-38100 87.530	+ 3.780	2609.181.770			303.684.860
13	-152.462.794	62.994	+ 0.982	-38.176.597	74.587	- 37.356		73.244.474/2352.203.864		
22	-152.481.269	81.269	+ 29.809	-38.150.176	50.176	- 3.780		1495.636.766/307.196.820		
24	-152.492.803	77.803	- 0.982	-38.170.807	70.807	+ 37.356	69.332.474			2466.248.860
							2678.714.244/168.881.200		2660.400.684/3.770.233.728	
							1109.833.044			1109.833.044
									1/2 = 554.916522	
13	-152.462.794	-152.400 62.994	- 47.017	-38.176.587	-38100 74.587	+ 2.902	2506.856.779			182.808.588
14	-152.436.252	34.252	- 0.891	-38.153.076	43.076	- 58.203	47.290.716		2010.695.156/10.110.110	
20	-152.462.103	62.103	+ 47.017	-38.115.884	15.884	- 2.902		746.818.028/180.222.906		
22	-152.481.269	81.269	+ 0.891	-38.150.176	50.176	+ 58.703		44.704.034		4770.734.107
							2554.147.695/1791.523.062		2190.980.624/495.542.695	
							2760.624.633			2762.624.633
									1/2 = 1381.313.165	

面積計算書

工区

ノ

ブロック

63

計算者



精算者



備考

11. 泉田 231-111

12. 泉田 293

点	①	②	③	④	⑤	⑥	③ × ⑤		② × ⑥			
	X	X-(定数)	X <sub>n-1</sub> -X <sub>n+1</sub>	Y	Y-(定数)	Y <sub>n-1</sub> -Y <sub>n+1</sub>	+	-	+	-		
14	-152.434.252 <sup>11</sup>	-152.400 <sup>11</sup> 34.252	-49.758	-38.133.076 <sup>11</sup>	-38.100 <sup>11</sup> 3.076	+20.796	2640.955	608 <sup>11</sup>		712.304.593 <sup>11</sup>		
V	-152.412.965 <sup>11</sup>	17.345	-14.679	-38.136.680 <sup>11</sup>	36.680 <sup>11</sup>	-47.919	332.425	720 <sup>11</sup>		391.560.055 <sup>11</sup>		
15	-152.419.573 <sup>11</sup>	19.573	+49.758	-38.105.157 <sup>11</sup>	5.157	-20.796		256.602	006,407.040	108 <sup>11</sup>		
20	-152.462.103 <sup>11</sup>	62.103	+14.679	-38.115.886 <sup>11</sup>	15.886	+47.919		233.161	236,	2975.913.657 <sup>11</sup>		
変更												
							3179.3813	28,489.763	242,998.600	163,3688.218	249 <sup>11</sup>	
							2689.618	086 <sup>11</sup>		2689.618	086 <sup>11</sup>	
										1/2 = 1324.809	043 <sup>11</sup>	
15	-152.419.573 <sup>11</sup>	-152.400 <sup>11</sup> 19.573	-26.449	-38.105.157 <sup>11</sup>	-38.000 <sup>11</sup> 105.157	-37.251	3832.867	493 <sup>11</sup>		729.113.823 <sup>11</sup>		
16	-152.425.654 <sup>11</sup>	25.654	+6.555	-38.078.633 <sup>11</sup>	78.633	-26.929		515.439	315,690.836	566 <sup>11</sup>		
17	-152.426.128 <sup>11</sup>	26.128	+34.141	-38.078.228 <sup>11</sup>	78.228	-2.698		2670.782	148,70.493	344 <sup>11</sup>		
18	-152.459.795 <sup>11</sup>	49.795	+35.975	-38.075.925 <sup>11</sup>	75.925	+37.656		2731.761	625 <sup>11</sup>	2251.640	520 <sup>11</sup>	
20	-152.462.103 <sup>11</sup>	62.103	-40.222	-38.115.886 <sup>11</sup>	115.886	+29.222	4661.086	248 <sup>11</sup>		1814.773	866 <sup>11</sup>	
							2423.953	745	17,983088	1490.443	733,4066.414	786 <sup>11</sup>
							2575.970	653 <sup>11</sup>		2575.970	653 <sup>11</sup>	
										1/2 = 1287.985	3265 <sup>11</sup>	



面積計算書		工 区	ノ	ブ ロ ック	<del>62</del> 63	計 算 者	精 算 者	備 考
点	① X	② X-(定数)	③ X <sub>n-1</sub> -X <sub>n+1</sub>	④ Y	⑤ Y-(定数)	⑥ Y <sub>n-1</sub> -Y <sub>n+1</sub>	③ × ⑤ +	② × ⑥ +
I	-152.503895	-152.500 3.895	-0.157	-38.070.623	-38.000 70.423	-2.996	11.056 411	11.669 420
II	-152.506.888	6.888	+3.150	-38.070.219	70.219	+2.792	221.189.850	19.231 296
3	-152.507.065	7.045	-2.993	-38.073.715	73.715	+0.204	219.132 495	1.437 180
							230.188 906	221.189 850
							8.999 056	8.999 056
								1/2 = 4.499 528

計年月  
算日

計算者

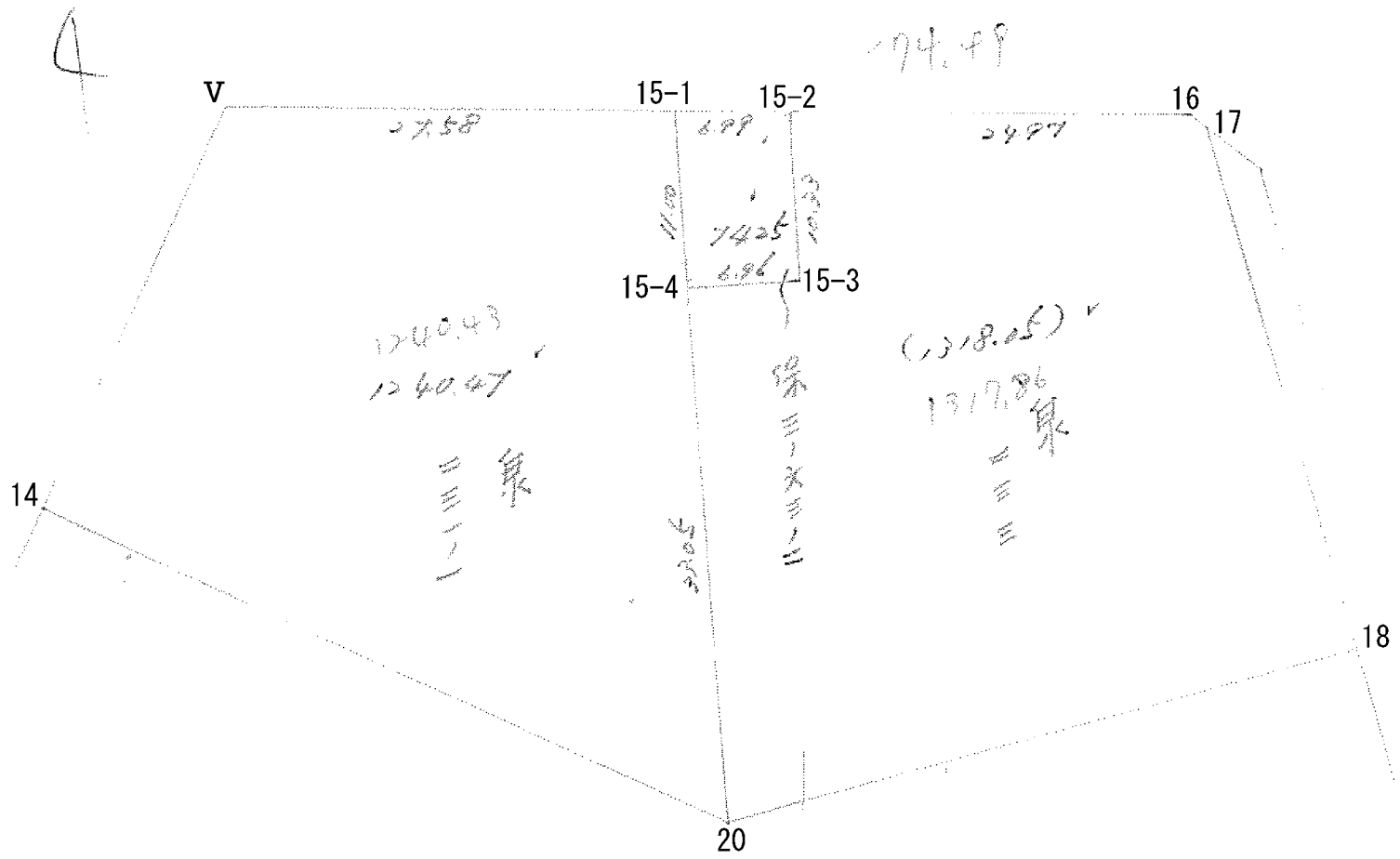


検査者



B. NO. ~~92~~ 63 各筆面積計算書

地番	算式	隅切	地積	摘要
	泉田 233		1318.05	
	備 3-13-2		<del>1,287.98</del>	
	泉田 232		74.25	
			1,863.38	
	泉田 234 (D)		952.36	
	新保 162 (H)		488.64	
	保 3~63~1		499.84	
	泉田 237の2 (D)		241.15	
	泉田 234 (4) 泉田 234-2		330.20	
	泉田 234-3		66.63	
			396.81	
	泉田 238の2		100.74	
	泉田 237の2 (1)		241.46	
	泉田 236の5		554.91	
	泉田 235の1, 235の4, 236の1, 236の6,		1,381.31	
	泉田 231の1 (1)		1,240.47	
			<del>1,344.80</del>	
	水路		194.24	
	計		63	
	全体		9,547.64	
			5	
			差 - 0.04	
	換地		8779.30	
			<del>8,853.56</del>	
	保		574.09	
			499.84	
	水路		194.24	





# 面積計算書

工区

3

ブロック

63

計算者

計算書

備考

保 3-63-2

点	①	②	③	④	⑤	⑥	③ × ⑤		② × ⑥	
	X	X - (定数)	X <sub>n-1</sub> - X <sub>n+1</sub>	Y	Y - (定数)	Y <sub>n-1</sub> - Y <sub>n+1</sub>	+	-	+	-
15-1	-152,418.509	<sup>-152,400</sup> 18.509	- 9.332	38,109.797	<sup>-38,100</sup> 9.797	- 8.334	91.425604		154.254006	
15-2	-152,420.071	20.071	+ 11.793	38,102.984	2.984	- 5.384		25.190312	102.062264	
15-3	-152,430.302	30.302	+ 9.332	38,104.413	4.413	+ 8.334		41.182116		252.536868
15-4	-152,429.403	29.403	- 11.793	38,111.318	11.318	+ 5.384	133.473174			159.305752
							224.898770	76.372428	262.316270	410.842620
							148.526250			148.526350
								$\frac{1}{2} = 74.263175$		
								卓検 <sup>0</sup> / <sub>10</sub>		
								$74.25^{000} = 72.$		

# 面積計算書

工区

ウ

ブロック

63

計算者

精算者

備考

231.1

233

点	①	②	③	④	⑤	⑥	③ × ⑤		② × ⑥	
	X	X - (定数) -152,410	X <sub>n-1</sub> - X <sub>n+1</sub>	Y	Y - (定数) -38,100	Y <sub>n-1</sub> - Y <sub>n+1</sub>	+	-	+	-
▽	-152,412.345	2.345	-15.743	-38,136.680	36.680	-43.279	577.453240		101.489255	
15-1	-152,418.509	8.509	+49.758	-38,109.797	9.797	-20.796	487.479126		176.953164	
20	-152,462.103	52.103	+15.743	-38,115.884	15.884	+43.279	250.061872			2254.965727
14	-152,434.252	24.252	-49.758	-38,153.076	53.076	+20.796	2640.955608			504.344592
							3218.408848	727.540938	278.442419	2759.310329
							2480.867910	1/2 = 1240.433955		2480.867910
15-2	-152,420.071	0.071	-4.648	-38,102.984	32.984	-25.780	152.309632		1.830380	
16	-152,425.654	5.654	+6.057	-38,078.633	8.633	-24.756		52.290281	139.970424	
17	-152,426.128	6.128	+24.141	-38,078.228	8.228	-2.698		280.912148	16.533244	
18	-152,459.795	39.795	+35.975	-38,076.935	5.935	+37.656		213.511625		1498.520520
20	-152,462.103	42.103	-30.392	-38,115.884	45.884	+35.383	1294.506528			1489.730449
15-4	-152,429.403	9.403	-31.801	-38,111.318	41.318	-11.471	1313.953718		107.861813	
15-3	-152,430.202	10.202	9.332	-38,104.413	34.413	-8.234	321.142116		85.856868	
							3182.911994	546.713854	352.052229	2988.250969
							2636.198140	1/2 = 1318.099070		2636.198140