

BLOCK NO. 43

街 区 計 算

街区略図

工区

W

ブロック

43

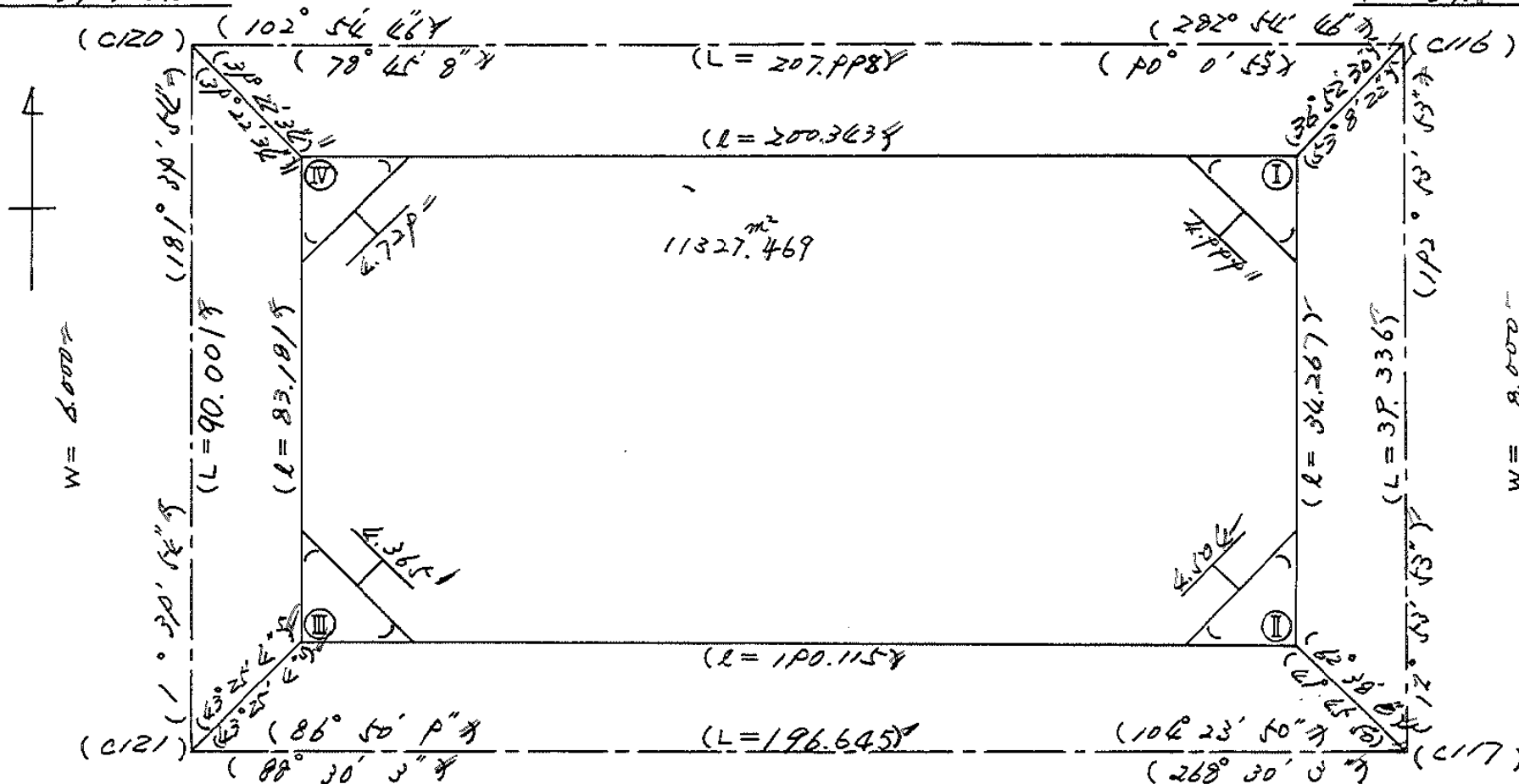
記入者

点検者

$X = -152.503.558$
 $Y = -37.725.386$

$W = 6.000$

$X = -152.550.039$
 $Y = -37.522.668$



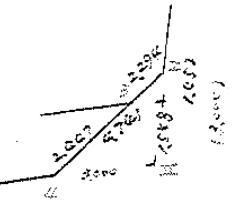
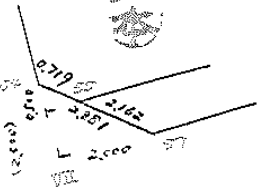
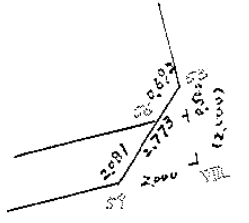
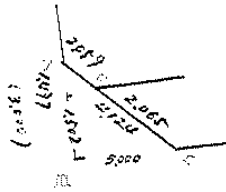
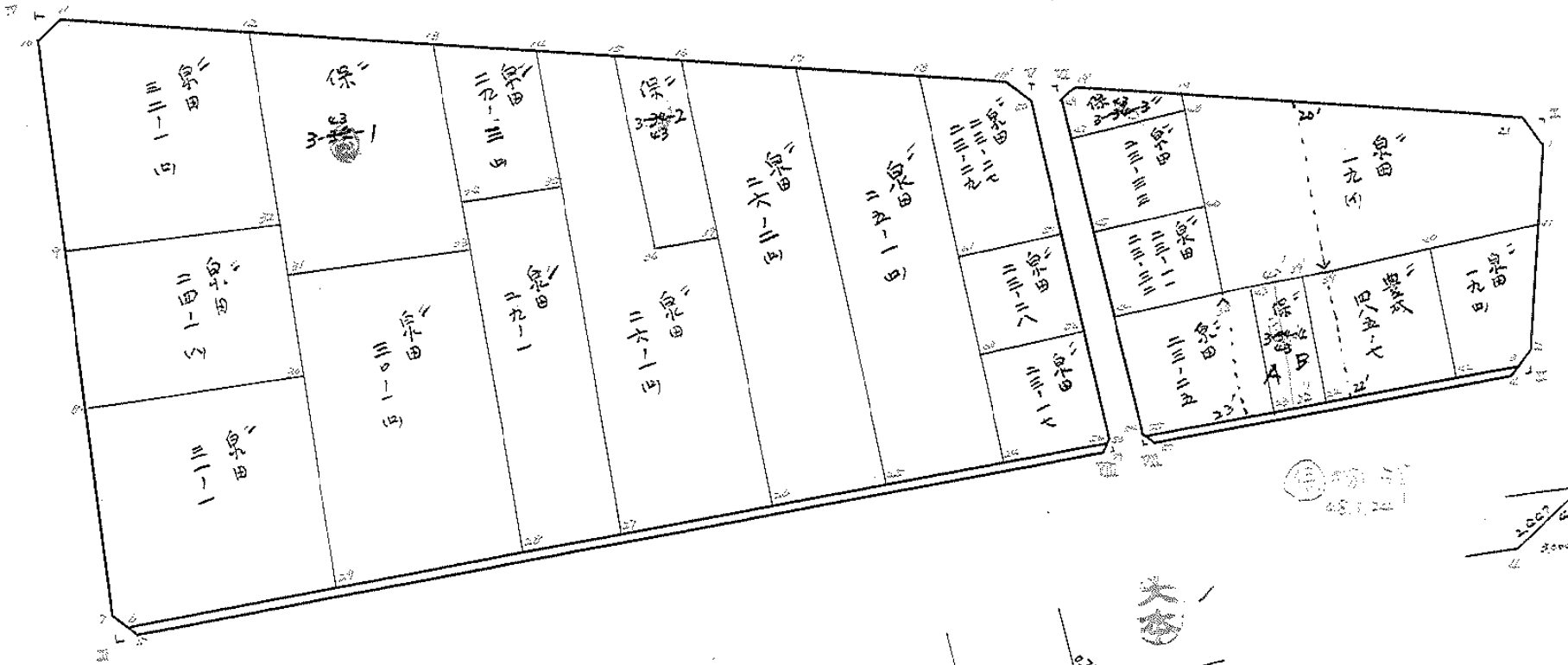
$X = -152.593.527$
 $Y = -37.728.006$

$W = 6.000$

$X = -152.588.382$
 $Y = -37.531.628$

面地計算

B No. 43



面積計算書

工区

3

ブロック

43

計測者



縮算者



備考

細 19(1)

点	①	②	③	④	⑤	⑥	③ × ⑤		② × ⑥	
	X	X - (定数)	X _{n-1} - X _{n+1}	Y	Y - (定数)	Y _{n-1} - Y _{n+1}	+	-	+	-
1	⁻¹⁵² 554.993"	^{-152.560} 14.993"	+16.181"	⁻³⁶ 527.886"	^{-36.520} 7.886"	+0.627"				
41	567.590"	27.590"	+13.627"	530.768"	10.768"	+34.127"				
29	568.420"	28.420"	+1.071"	542.013"	42.013"	+41.713"				
28	568.651"	28.651"	-27.170"	572.481"	52.481"	+12.393"	1425.908770"			
19	541.250"	1.250"	-17.252"	576.406"	54.406"	-42.360"	938.612312"		52.925000"	
21	551.399"	11.399"	+13.763"	530.161"	10.161"	-46.520"				
							129.367763"		530.281630"	
							2364521082466.548988"		583.206480"	2491.178574"
							1907.972094"			1907.972094"
							X _Y = 963.986067"			

面積計算書

工区

3

ブロック

63

計算者

精算者

備考

期194
量成485-7

点	①	②	③	④	⑤	⑥	③ ×	⑤	② ×	⑥
	X	X-(定数)	X _{n-1} -X _{n+1}	Y	Y-(定数)	Y _{n-1} -Y _{n+1}	+	-	+	-
	-152	-152.580		-37	-37.530					
41	567.580	7.580	+14.585	530.768	0.768	-10.788		11.201280	81.773040	
2	582.507	22.547	+16.419	534.195	4.195	+5.202		18.877705	117.289486	
3	583.999	23.999	+1.677	535.970	5.970	+10.367		10.011690	248.797633	
42	584.224	24.224	-16.037	542.562	14.562	+9.013	233.530796		218.330712	
40	567.962	7.962	-16.644	544.983	14.983	-13.794	249.377052		109.827828	
							482.907846	90.090675	191.600868	584.418039
							392.817171			392.817171
							× 1/2 = 196.4085855			
40	-152	-152.580		-37	-37.540					
40	567.962	7.962	+15.804	544.983	4.983	-17.451		78.751332	138.946862	
42	584.224	24.224	+16.716	544.562	4.562	+16.947		76.258392	410.524128	
22	584.678	24.678	-15.796	561.930	21.930	+17.790	346.606280		439.021620	
39'	588.428	8.428	-16.258	552.352	22.352	+0.083	383.398816		0.899524	
39	588.420	8.420	-0.466	562.013	22.013	-17.369	10.258058		146.246988	
							720.063154	155.009724	285.191842	850.245272
							565.053430			565.053430
							× 1/2 = 282.526715			

面積計算書

工
区

3

ブ
ロ
ック

43

計
算
者



精
算
者



備
考

保留地
~~非指定地~~

3-43-4

点	①	②	③	④	⑤	⑥	③	×	⑤	②	×	⑥
	X	X-(定数)	X _{n-1} -X _{n+1}	Y	Y-(定数)	Y _{n-1} -Y _{n+1}	+		-	+		-
29	⁻¹⁵² 568.428	^{-152.560} 8.428	+16.116	⁻³⁷ 562.352	^{-37.560} 2.352	-6.504			37.904832			54.815712
22	584.878	24.678	+16.409	561.930	1.930	+5.652			31.669376			139.680056
23	584.837	24.837	-16.116	568.000	8.000	+6.504	128.992664					161.539808
43	568.562	8.562	-16.409	568.434	8.434	-5.652	138.393506					48.392424
							267.385976		69.574202	103.208136		301.019906
							197.811768					197.811768
							× 1/2 = 98.905884					

面積計算書

工区

ブロック

計算者

精算者

備考

保留地3-43-4を分筆

点	① X	② X-(定数) X _{n-1} -X _{n-1}	③ X _{n-1} -X _{n-1}	④ Y	⑤ Y-(定数) Y _{n-1} -Y _{n-1}	⑥ Y _{n-1} -Y _{n-1}	③ +	⑤ -	② +	⑥ -
49'	⁻¹⁵² 568.428	^{-152.560} 8.4281 + 16.183		⁻³⁷ 562.352	^{-37.560} 2.3521 - 3.467				(B) +	
22'	584.678	24.6781 + 16.329		561.930	1.9301 + 2.615					64.532970
22''	584.757	24.7571 - 16.183		564.967	4.9671 + 3.467		80.380961			85.832519
43'	568.495	8.4951 - 16.329		565.397	5.3971 - 2.615		88.127613		22.214425	
							168.50857469.577386		51.634301	150.365489
							98.931188			98.931188
						(A)	$\times \frac{1}{2} = 49.465594$			
43'	⁻¹⁵² 568.495	^{-152.560} 8.4951 + 16.195		⁻³⁷ 565.397	^{-37.560} 5.3971 - 3.467					
22''	584.757	24.7571 + 16.342		564.967	4.9671 + 2.607					64.541499
23	584.837	24.8371 - 16.195		568.004	8.0041 + 3.467		129.624780			86.109879
43	568.562	8.5621 - 16.342		568.434	8.4341 - 2.607		137.828428		22.321134	
							267.453208	168.575129	51.773299	150.551078
							98.878079			98.878079
							$\times \frac{1}{2} = 49.4390395$			

面積計算書

工区

3

ブロック

43
4

計算者

473

精算者

473

備考

開切, 23-24

点	①	②	③	④	⑤	⑥	③ × ⑤	② × ⑥
	X	X-(定数)	X _{n-1} -X _{n+1}	Y	Y-(定数)	Y _{n-1} -Y _{n+1}	+ -	+ -
		-152, 580			-37, 580			
54	-152, 584.814	4.814	-0.052	-37, 586.142	6.142	-1.999	0.319384	9.623186
57	-152, 586.758	6.758	+1.996	-37, 584.016	4.016	-0.127	8.015936	0.258266
VII	-152, 586.810	6.810	-1.944	-37, 586.015	6.015	+2.126	11.693160	14.478060
							12.012544	10.481452
							3.996608	3.996608
								1/2 = 1.998304
		-152, 500			-37, 500			
44	-152, 587.528	69.528	-16.163	-37, 587.112	87.112	-13.661	1407.991256	949.822088
38	-152, 588.654	68.654	-0.966	-37, 572.481	72.481	-18.678	70.016646	1282.263378
43	-152, 588.562	68.562	+16.186	-37, 568.434	68.434	-4.477	1107.672724	306.952074
23	-152, 584.937	84.937	+16.736	-37, 568.004	68.004	+17.176	1138.114944	1457.160312
55	-152, 585.298	85.298	-0.033	-37, 585.610	85.610	+18.138	1.969030	1547.135124
55	-152, 584.814	84.814	-15.770	-37, 586.142	86.142	+1.502	1358.459340	127.390628
							2838.436272	2245.787662
							592.648604	2539.037460
								31.686064
								592.648604
								1/2 = 296.324302

面積計算書

工区

ウ

ブロック

43

計算者

長

精算者

測量

備考

道路

点	①	②	③	④	⑤	⑥	③	×	⑤	②	×	⑥
	X	X-(定数)	X _{n-1} -X _{n+1}	Y	Y-(定数)	Y _{n-1} -Y _{n+1}	+		-	+		-
T	-153,536.85	-152,530 6.8514	-49,048	-37,593.593	-37,580 13.593	-1.267	666.709464			8.680217		
VI	-153,537.876	7.876	+49,959	-37,589.121	9.121	-7.578	455.676039			59.686328		
VII	-153,536.810	56.810	+49,048	-37,586.015	6.015	+1.267	295.023720			71.978270		
VIII	-153,536.944	56.924	-49,959	-37,590.388	10.388	+7.578	518.974092			431.370072		
							1185.683556		750.699759	68.364545		503.348342
							434.983797					434.983797
									1/2 = 217.4918985			
							217.49		(1.92 + 1.92 + 2.00 + 2.00)			= 275.33
									1.91 + 1.99 + 1.99 + 1.91			

面積計算書

工区

ウ

ブロック

43

計算者

(定守)

精算者

(印)

備考

下馬

泉田 32-100

点	①	②	③	④	⑤	⑥	③ × ⑤		② × ⑥	
	X	X-(定数)	X _{n-1} -X _{n+1}	Y	Y-(定数)	Y _{n-1} -Y _{n+1}	+	-	+	-
11	-152,507.969 ⁴	^{-152,500} 7.969 ⁴	+2.999 ⁴	-37,719.569 ⁴	^{-37,710} 9.569 ⁴	+0.087 ⁴			28.697431 ⁴	0.693303 ⁴
10	-152,510.298 ⁴	10.298 ⁴	-0.670 ⁴	-37,722.580 ⁴	12.580 ⁴	+2.924 ⁴	8.428600 ⁴			30.111352 ⁴
TD	-152,507.299 ⁴	7.299 ⁴	-2.329 ⁴	-37,722.493 ⁴	12.493 ⁴	-3.011 ⁴	28.096197 ⁴		21.977289 ⁴	
							37.524797 ⁴	28.697431 ⁴	21.977289 ⁴	30.804655 ⁴
							8.827366 ⁴			8.827366 ⁴
									1/2 = 4.413685 ⁴	
9	-152,538.810 ⁴	^{-152,500} 38.810 ⁴	-29.363 ⁴	-37,723.411 ⁴	^{-37,690} 33.411 ⁴	+28.467 ⁴	981.047193 ⁴			1104.804270 ⁴
10	-152,510.298 ⁴	10.298 ⁴	-30.841 ⁴	-37,722.580 ⁴	32.580 ⁴	-3.842 ⁴	1004.799780 ⁴			39.564916 ⁴
11	-152,507.969 ⁴	7.969 ⁴	+3.526 ⁴	-37,719.569 ⁴	29.569 ⁴	-28.550 ⁴		104.260294 ⁴	227.514950 ⁴	
12	-152,513.824 ⁴	13.824 ⁴	+31.692 ⁴	-37,694.030 ⁴	4.030 ⁴	-25.456 ⁴		127.718760 ⁴	351.903744 ⁴	
82	-152,539.661 ⁴	39.661 ⁴	+24.986 ⁴	-37,694.113 ⁴	4.113 ⁴	+29.381 ⁴		102.767418 ⁴		1165.279841 ⁴
							1985.846973 ⁴	334.746472 ⁴	618.983610 ⁴	2270.084111 ⁴
							1651.100501 ⁴			1651.100501 ⁴
									1/2 = 825.5502505 ⁴	

面積計算書

工区

3

ブロック

43

計算者

田中

精算者

田中

備考

隔功
水塔

点	①	②	③	④	⑤	⑥	③	×	⑤	②	×	⑥
	X	X-(定数)	X _{n-1} -X _{n+1}	Y	Y-(定数)	Y _{n-1} -Y _{n+1}	+		-	+		-
I	-152,552.069	2.069	-3.594	-37,527.216	7.216	+2.215	25,914,304					4,665,595
21	-152,551.399	1.399	+2.924	-37,530.141	10.141	+0.670		29,652,284				0,927,330
1	-152,554.993	4.993	+0.670	-37,527.886	7.886	-2.925		5,283,620		14,604,525		
							25,934,304	34,935,902		14,604,525		5,602,925
								9,001,600		9,001,600		
									1/2	4,500,800		
3	-152,583.999	3.999	+0.251	-37,535.970	5.970	-47.746		11,498,470		190,936,254		
4	-152,585.549	5.549	+2.759	-37,537.864	7.864	+48.046		21,696,776				266,607,254
57	-152,586.758	6.758	-0.251	-37,584.016	54.016	+47.746		13,558,016				322,667,468
55	-152,585.298	5.298	-2.759	-37,584.610	45.610	-48.046		153,427,990		254,547,708		
							166,986,006	23,195,246		445,483,962		589,224,722
							143,790,760					143,790,760
									1/2	71,895,380		

面積計算書

工区

ウ

ブロック

43

計算者



測算者



備考

23-27 23-29
陽明

点	①	②	③	④	⑤	⑥	③ × ⑤		② × ⑥		
	X	X-(定数)	X _{n-1} -X _{n+1}	Y	Y-(定数)	Y _{n-1} -Y _{n+1}	+	-	+	-	
51	-152,557.380	-152,530 27.380	+19.427	-37,592.279	-37,590 2.279	+12.883			44.274133		352.736540
61	-152,558.274	28.274	-23.735	-37,606.342	16.348	+15.300	388.019780				422.592200
18	-152,533.645	3.645	-21.870	-37,607.579	17.579	-10.805	384.657730			39.384225	
18'	-152,536.404	6.404	+5.202	-37,595.543	5.543	-14.114			28.834686	90.326056	
50	-152,538.847	8.847	+20.976	-37,593.465	3.465	-3.264			72.681840	28.876608	
							772.472510	145.790659	158.646889		725.328740
							626.681251				626.681251
									1/2	313.3409255	
18'	-152,536.404	-152,530 6.404	+1.996	-37,595.543	-37,590 5.543	-0.128			11.063828	0.819712	
50	-152,538.847	8.847	+0.447	-37,593.465	3.465	-1.950			1.548855	17.251650	
T	-152,536.851	6.851	-2.443	-37,593.593	3.593	+2.078	8.777699				14.236378
							8.777699	12.612683	18.071362		14.236378
								3.834984	3.834984		
									1/2	1.917492	

面積計算書

工区

3

ブロック

43

計算者

定

精算者

定

備考

泉田 25-1 (10)

23-28

点	①	②	③	④	⑤	⑥	③ × ⑤		② × ⑥	
	X	X-(定数)	X _{n-1} -X _{n+1}	Y	Y-(定数)	Y _{n-1} -Y _{n+1}	+	-	+	-
17	-152,529.906	-152,500 29.906	-52.589	-37,623.286	-37,600 23.286	-13.487	1255.949766		403.342222	
18	-152,533.645	33.645	+55.899	-37,607.579	7.579	-18.915		423.658521	636.395175	
24	-152,585.805	25.805	+52.581	-37,604.971	4.971	+13.487		261.380151		1157.252035
25	-152,586.226	26.226	-55.899	-37,621.066	21.066	+18.915	1177.162334			1630.964790
							2433.518100	685.032672	1039.737397	2788.216825
							1748.479428			1748.479428
									1/2 874.239714	
51	-152,557.380	-152,500 57.380	+13.082	-37,592.279	-37,590 2.279	-14.964		29.813878	858.634320	
52	-152,571.356	71.356	+14.887	-37,591.384	1.384	+13.369		20.603608		953.958364
60	-152,572.269	72.269	-13.082	-37,605.648	15.648	+14.964	204.707136			1081.403388
61	-152,558.274	58.274	-14.887	-37,606.348	16.348	-13.369	243.372676		779.065106	
							448.079812	50.417426	1637.699426	2035.361752
							397.662326			397.662326
									1/2 198.831163	

面積計算書

工区

ウ

ブロック

43

計算者

精算者

備考

第 29-1
保留地 3-43-2

点	①	②	③	④	⑤	⑥	③ × ⑤	② × ⑥
	X	X-(定数)	X _{n-1} -X _{n+1}	Y	Y-(定数)	Y _{n-1} -Y _{n+1}	+	-
34	-152,545.377	-152540 5.377	-42.316"	-37,667.955	-37650 19.955	-14.820"	844.415780	79.687140
35	-152,545.170	5.174	+41.711"	-37,654.558	4.558	-15.971"	190.118738	82.633954
37	-152,587.088	47.088	+42.316"	-37,653.784	3.984	+14.820"	168.586944	697.844160
38	-152,587.490	47.490	-41.711"	-37,669.378	19.378	+15.971"	308.275958	758.462790
							1652.691538	358.705682
							1293.985256	162.321094
								1456.306950
								1293.985256
								1/2 = 646.992628
15	-152,524.622	-152520 4.622	-18.839"	-37,646.674	-37630 16.674	-7.066"	314.121486	33.083012
16	-152,526.589	6.539	+20.286"	-37,638.572	8.572	-9.026"	173.891592	59.021014
37	-152,544.762	24.968	+18.839"	-37,637.648	7.648	+7.066"	144.080672	176.423888
36	-152,545.378	25.378	-20.286"	-37,645.638	15.638	+9.026"	317.232468	229.061828
							631.253954	92.104026
							317.972264	405.485716
							313.381690	313.381690
								1/2 = 156.690845

面積計算書

工区

ウ

ブロック

43

計算者

尾守

精算者

尾守

備考

泉月 30-1 (0)

泉月 29-3 (0)

点	①	②	③	④	⑤	⑥	③ × ⑤		② × ⑥	
	X	X-(定数)	X _{n-1} -X _{n+1}	Y	Y-(定数)	Y _{n-1} -Y _{n+1}	+	-	+	-
		-152540			-37660					
23	-152,547.107	7.107	+ 40.551	-37,669.931	9.931	- 24.759		402.711981		175.962213
28	-152,527.494	47.490	+ 41.035	-37,669.378	9.378	+ 24.341		384.826230		1155.954090
29	-152,528.142	48.142	- 40.551	-37,694.272	34.272	+ 24.759	1329763872			1191.947778
31	-152,546.939	6.939	- 41.035	-37,694.137	34.137	- 24.341	1400.811795			168.902199
							2790.575667	727.538211	344.864412	2347.901868
							2003.037456			2003.037456
										1/2 = 1001.518728
		-152510			-37650					
13	-152,519.262	9.262	- 22.573	-37,670.213	20.213	- 15.091	458.525349			139.772842
14	-152,522.804	12.804	+ 25.912	-37,654.264	4.264	- 15.755		126.035968		201.727020
35	-152,545.174	35.174	+ 22.573	-37,654.558	4.558	+ 15.091		102.887734		530.810834
34	-152,545.377	35.377	- 25.912	-37,669.955	19.955	+ 15.755	517.073960			557.364635
							975.599309	228.923702	341.499862	1088.175469
							746.675607			746.675607
										1/2 = 373.337803

面積計算書

工区

0

ブロック

43

計算者

定

精算者

定

備考

23-17

第70

点	①	②	③	④	⑤	⑥	③ × ⑤		② × ⑥	
	X	X-(定数)	X _{n-1} -X _{n+1}	Y	Y-(定数)	Y _{n-1} -Y _{n+1}	+	-	+ -	
52	-152,571.256	-152,500 71.356	-12.662	-37,591.224	-37,500 91.324	+15.132	1157.104208		1079.758992	
60	-152,572.267	72.267	+14.449	-37,605.648	105.648	+13.587	1526.507952		981.891729	
24	-152,585.205	25.205	+13.172	-37,604.971	104.971	-14.664	1322.678012	1248.244520		
56	-152,585.439	25.439	-0.876	-37,590.984	90.984	-14.455	79.701984		1235.020745	
53	-152,584.929	24.929	-14.083	-37,590.516	90.516	+0.400	1274.736828		33.971600	
							2511.543020	2909.185964	2492.265265	2095.622321
								397.642944	397.642944	
								1/2 = 198.821472		
53	-152,584.929	-152,520 4.929	+0.052	-37,590.516	-37,590 0.516	+1.999	0.0268324		9.853071	
59	-152,586.976	6.976	+1.995	-37,592.387	2.387	-0.128	4.7620654	0.892928		
VII	-152,586.924	6.924	-2.047	-37,590.388	0.388	-1.871	0.794236	12.954204		
							0.794236	14.788899	13.247732	9.853071
								3.994661	3.994661	
								1/2 = 1.9973305		

面積計算書

工区

ウ

ブロック

43

計算者



精算者



備考

東田 4-16
係 3-72-1

点	①	②	③	④	⑤	⑥	③ × ⑤		② × ⑥				
	X	X-(定数)	X _{n-1} -X _{n+1}	Y	Y-(定数)	Y _{n-1} -Y _{n+1}	+	-	+	-			
8	-152,559.107	-152530 29.107	-21.144	-37,724.002	-37690 34.002	+29.231	718.938	288		850.826717			
9	-152,538.818	8.810	-19.446	-37,723.411	33.411	-29.889	649.710	306		263.322090			
22	-152,539.661	9.661	+21.144	-37,694.113	4.113	-29.231			86.965	272	282.400691		
30	-152,559.954	29.954	+19.446	-37,694.180	4.180	+29.889			81.284	280	895.295106		
							1368.648	594	168.249	558	745.722	781	1743.121823
							1200.399	042					1200.399042
									1/2 =	600.199	21		
12	-152,513.824	-152510 3.824	-27.677	-37,694.080	-37660 34.030	-23.824	941.848	310		91.102	976		
18	-152,519.262	9.262	+33.283	-37,670.313	10.313	-24.099			343.247	579	223.204	938	
23	-152,547.107	37.107	+27.677	-37,669.931	9.931	+23.824			274.860	287			884.037168
31	-152,546.939	36.939	-33.283	-37,694.137	34.137	+24.099	1136.181	771					890.192961
							2078.030	081	618.107	866	314.307	14	1774.230129
							1459.922	215					1459.922215
									1/2 =	729.961	107	5	

分筆後の座標なし

面積計算書

工区

ウ

ブロック

43

計算者

定守

精算者

精算者

備考

水路

点	①	②	③	④	⑤	⑥	③	×	⑤	②	×	⑥	
	X	X-(定数)	X _{n-1} -X _{n+1}	Y	Y-(定数)	Y _{n-1} -Y _{n+1}	+		-	+		-	
56	-152,585.409	-152520 5.439	-1.928	-37,590.984	-37500 90.984	-130.987	175.417	155		712.438	293		
59	-152,586.976	6.976	+4.928	-37,592.087	92.087	+130.932			455.283	136		913.381	
5	-152,590.267	10.267	+1.928	-37,721.916	221.916	+130.987			427.854	048		1357.942	
6	-152,588.904	8.904	-4.928	-37,723.074	223.074	-130.932	1100.787	075		1165.818	528		
							1276.204	224	893.137	184	1878.256	221	2271.323
							393.067	040					393.067
									1/2 =	196.533	520		

面積計算書

工区

4

ブロック

43

計算者

(Handwritten signature)

精算者

(Handwritten signature)

備考

東田 31-1
限外

点	①	②	③	④	⑤	⑥	③ × ⑤		② × ⑥	
	X	X-(定数)	X _{n-1} -X _{n+1}	Y	Y-(定数)	Y _{n-1} -Y _{n+1}	+	-	+	-
6	-152,588.904	⁻¹⁵²⁵⁵⁰ 38.904	- 0.696"	-37.723.874	⁻³⁷⁶⁹⁰ 33.374	+ 30.555"	23.228 304			1188.711 720
7	-152,587.446	37.446	- 29.797"	-37.724.828	34.828	+ 0.628"	1037.769 916			23.516 088
8	-152,559.107	9.107	- 27.492"	-37.724.002	34.002	- 30.648"	934.782 984			279.111 336
30	-152,559.954	9.954	+ 29.225"	-37.694.180	4.180	- 29.729"		121.366 300		295.922 466
29	-152,588.142	38.142	+ 28.950"	-37.694.273	4.273	+ 29.194"		123.703 350		1113.517 548
							1995.781 204	245.069 650		575.033 802
							1750.711 554			2325.745 356
										1750.711 554
										1/2 = 875.355 777
5	-152,590.367	⁻¹⁵²⁵⁸⁰ 10.367	- 2.999"	-37.721.916	⁻³⁷⁷²⁰ 1.916	- 0.087"	5.746 084			0.901 929
7	-152,587.446	7.446	+ 0.078"	-37.724.828	4.828	+ 2.999"		0.376 584		22.330 554
II	-152,590.445	10.445	+ 2.921"	-37.724.915	4.915	- 2.912"		14.356 715		30.415 840
							5.746 084	14.733 299		31.317 769
								8.987 215		8.987 215
										1/2 = 4.493 607 5

計年月日
算日

計算者



検査者



B.NO. 43

各筆面積計算書

地番	算式	隅切	地積	摘要
1	泉田 19(1)		953 98	
2	泉田 19(1)		196 40 191 80	
3	豊成 485-7		282 52 282 44	
4	未指定地(保留地) 3-43-4		98 90 104 43	
5	泉田 23-25		296 32	
6	泉田 23-32 23-11		165 16	
7	泉田 23-33		183 89	
8	未指定地(保留地) 3-43-3		79 81	
9	泉田 23-27 23-29		213 24	
10	泉田 23-28		198 83	
11	泉田 23-17		198 82	
12	泉田 25-1(1)		876 23	
13	泉田 26-2(1)		866 70	
14	未指定地(保留地) 3-43-2		156 69	
15	泉田 26-1(1)		919 25	
16	泉田 29-3(1)		273 23	
17	泉田 29-1		648 99	
18	保留地 3-43-1		729 96	
19	泉田 30-1(1)		1001 51	
20	泉田 32-1(1)		825 55	
21	泉田 24-1(1)		600 19	
22	泉田 31-1		875 25	
	水路		196 53	
	水路		71 89	
	通路		725 33	

