

BLOCK NO. 44

街 区 計 算

街区略図

工区

3

ブロック

44

記入者



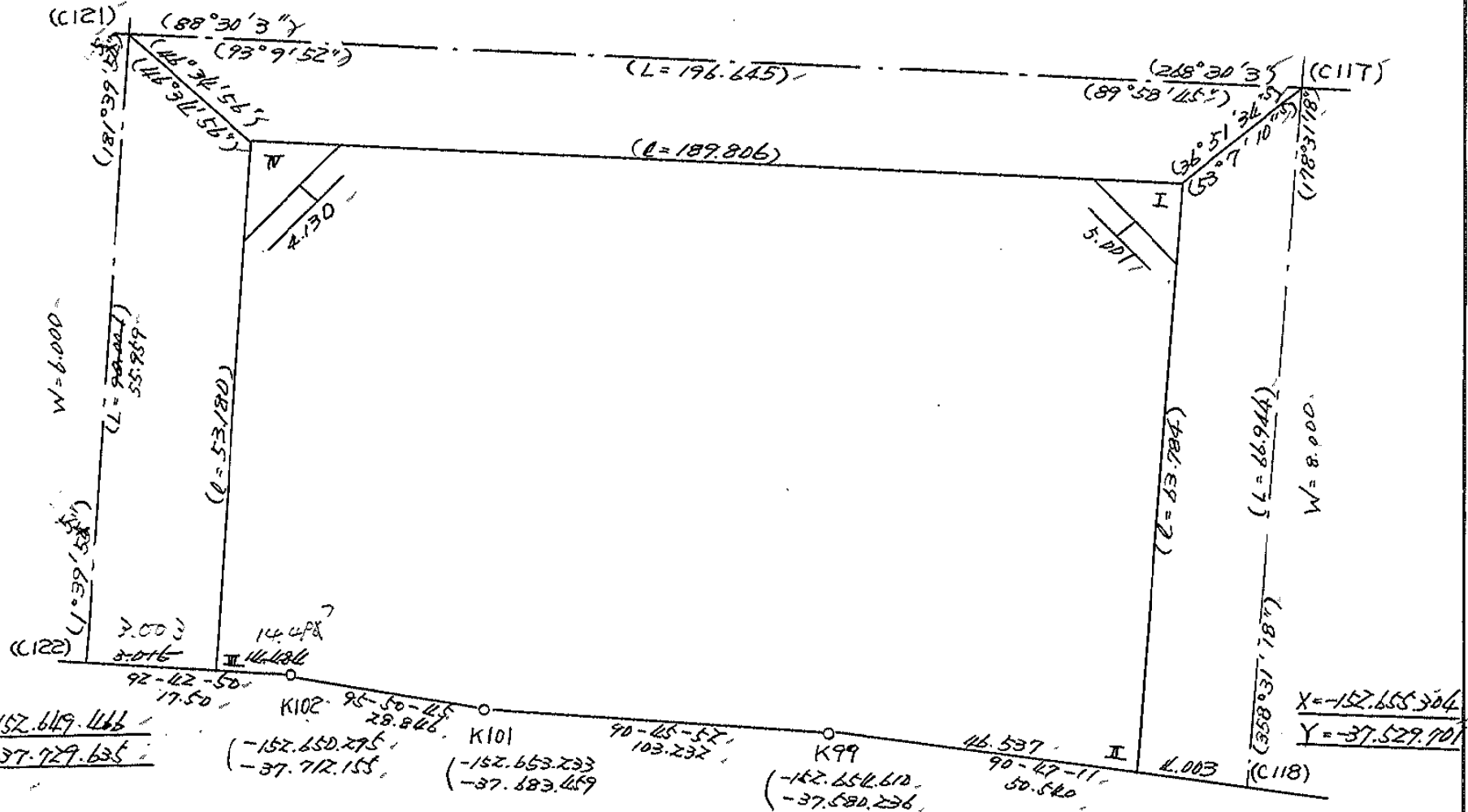
点検者



$X = -152.593.527$
 $Y = -37.728.006$

$X = -152.588.387$
 $Y = -37.531.428$

W = 6.000



$X = -152.619.466$
 $Y = -37.729.635$

(-152.650.275, -37.712.155)
(-152.653.233, -37.683.459)

(-152.654.610, -37.580.236)

$X = -152.655.304$
 $Y = -37.529.701$

面積計算書

工
区

3

ブ
ロ
ック

44

計
算
者



精
算
者

備
考

全体

点	①	②	③	④	⑤	⑥	③	×	⑤	②	×	⑥
	X	X-(定数)	X _{n-1} -X _{n+1}	Y	Y-(定数)	Y _{n-1} -Y _{n+1}	+		-	+		-
I	-152 591.486	-152.590 1.486	+58.798	-37 535.349	-37.500 35.349	-191.387			2078.450502	284.40/082		
II	655.249	65.249	+63.124	533.703	33.703	+44.887			2127.468172			2928.83/863
K99	654.610	64.610	-2.016	580.236	80.236	+149.756	161.755776					9675.735/60
K101	653.233	63.233	-4.315	683.459	183.459	+131.919	791.625685					8341.634/27
K102	650.295	60.295	-3.624	712.155	212.155	+43.176	768.849720					2603.296926
III	649.609	59.609	-53.844	726.635	226.635	+12.935	12202.934940					771.042415
IV	596.451	6.451	-58.123	725.090	225.090	-191.286	13082.906070			1233.985986		
							27008.072091		4205.918674	1518.387068		24320.540485
							22802.153417					22802.153417
									$V_2 = 11401.0767085$			
									$S = \frac{1}{2}(I + II + III + IV)$			
									$11.401.07 - (4.50 + 4.50 + 4.49 + 4.49) = 11.383.09 \text{ m}^2$			

面地計算

面積計算書

工区

ウ

ブロック

44

計算者



精算者

備考

1. 原田 20
2. 泉田 21-14)

点	①	②	③	④	⑤	⑥	③ × ⑤		② × ⑥	
	X	X-(定数)	X _{n-1} -X _{n+1}	Y	Y-(定数)	Y _{n-1} -Y _{n+1}	+	-	+	-
1	152,594.485	152,590,000 4,485	+ 60.605	37,525.272	37,530,000 4,728	- 4,457		317,931.320		20,487,995
2	652.250	62.250	+ 59.243	653.727	62.781	- 0.030		223,997,783		1,267,500
3	653.728	63.728	+ 1.273	655.242	64.247	+ 16.363		6,573,066		1,042,781,264
22	653.523	63.523	- 61.813	650.104	21.144	+ 16.501	1245.161,077			1040.193,023
20	591.915	1.915	- 61.958	551.743	21.743	- 11.776	1347.152,794			22,529,340
21	591.565	1.565	+ 2,470	538,248	8.348	- 16.471		21,454,360		25,777,115
							2,692,313,866	472,056,529	70,716,950	20,90,974,287
							2020,257,337			2020,257,337
								Y ₂ = 1010,128,668.5		
-152		-152,590,000		-37	-37,550,000					
20	591.915	1.915	+ 61.110	551.743	1.743	= 20.628		106,514,730		29,491,130
22	653.728	63.523	+ 61.386	550.104	0.104	+ 14.572		8,839,844		925,657,156
23	653.301	63.301	- 61.110	566.315	16.315	+ 20,627	997,009,650			1205,393,222
19	592.413	2.413	- 61.386	570.766	20.766	- 14.577	1274,741,676			25,162,236
							2271,751,326	115,354,314	74,653,366	2231,050,378
							2156,397,012			2156,397,012
								Y ₂ = 1078,198,506		

15-2

面積計算書						工区	ブロック	計算者	精算者	備考	保
			3	44						3, 4	保 3-24-1 保 5-23-7
点	①	②	③	④	⑤	⑥	③ × ⑤	② × ⑥			
	X	X-(定数)	X _{n-1} -X _{n+1}	Y	Y-(定数)	Y _{n-1} -Y _{n+1}	+ -	+ -			
19	⁻¹⁵² 592.413	2.413	+ 5.627	⁻³⁷ 570.766	0.766	- 13.115		4.310282			
36	598.372	8.372	+ 7.112	570.330	0.330	+ 14.250		2.346960			
38	599.525	9.525	- 3.579	585.016	15.016	+ 14.988	53.742264				
37	594.793	4.793	- 6.780	585.318	15.318	- 1.571	103.856040	7.529803			
18	592.745	2.745	- 2.380	583.445	13.445	- 14.552	31.999100	39.945240			
							189.597.404	6.657242			
							182.940162	79.121538			
							<u>91.470081</u>	262.061700			
								<u>182.940162</u>			
								91.470081			
36	⁻¹⁵² 598.372	8.372	+ 53.776	⁻³⁷ 570.330	10.330	14.686 - 18.701		555.506080			
23	653.301	63.301	+ 54.726	566.315	6.315	+ 10.769		345.594690			
24	653.098	63.098	- 0.702	581.099	21.099	+ 15.315	14,811498				
39	652.599	62.599	- 53.573	581.630	21.630	+ 3,917	1158.783990				
38	599.525	9.525	- 54.227	585.016	25.016	- 11.300	1356.542632	107.632500			
							2,530,138120	901.100770			
							<u>1.629,037750</u>	264.197272			
								270.583692			
								1893.230622			
								<u>1629,037750</u>			
								814.518675			

面積計算書						工区	ブロック	計算者	精算者	備考	5)	6)	23-15 23-18 23-19	23-20 23-21
点	① X	② X-(定数)	③ X _{n-1} -X _{n+1}	④ Y	⑤ Y-(定数)	⑥ Y _{n-1} -Y _{n+1}	③ × +	⑤ × -	② × +	⑥ × -				
40	-152 594.912	-152.590 4.912	+ 4.780	-37 589.865	-37.580 9.862	- 2.310		47.140360	11.316720					
41	597.748	7.748	+ 3.320	589.686	9.680	+ 14.036		32.137600						111.850128
47	598.232	8.232	- 4.451	604.298	24.298	+ 14.873	108.150398							122.074536
16	593.297	3.297	- 5.264	604.553	24.553	- 12.308	129.246992							40.579476
17	592.968	2.968	+ 1.615	591.990	11.990	- 14.691		19.363856	43.602888					
							237.397390	98.641810	95.529080	234.280660				
							139.755580							138.765580
							Σ = 69.377790		合筆あり					
41	-152 597.748	-152.590 7.748	+ 10.544	-37 589.680	-37.580 9.680	- 15.324		102.065920	118.730352					
42	608.776	18.776	+ 11.488	589.974	8.974	+ 14.046		103.990712						263.727696
48	609.336	19.336	- 10.544	603.726	23.726	+ 15.324	250.166940							296.304864
47	598.232	8.232	- 11.488	604.298	24.298	- 14.046	281.565220							115.626672
							531.732168	206.056632	234.357020	564.032560				
							325.675536							325.675536
							Σ = 162.837768		合筆あり					

面積計算書						工区	ブロック	44	計算者	精算者	備考	7	23-22	備考	8	23-37
点	①	②	③	④	⑤	⑥	③ × ⑤	② × ⑥								
	X	X-(定数)	X _{n-1} -X _{n+1}	Y	Y-(定数)	Y _{n-1} -Y _{n+1}	+	-	+	-						
42	⁻¹⁵² 608.776	^{-152.600} 8.776	+15.376	⁻³⁷ 588.974	^{-37.580} 8.974	-15.772			137.984224	138.415072						
43	624.712	24.712	+16.653	587.954	7.954	+13.922			132.457962	344.040464						
49	625.429	25.429	-15.376	602.896	22.896	+15.772	352.048896			440.066188						
48	609.338	9.338	-16.653	603.728	23.728	-13.922	395.109078			129.975792						
									742.157974	2704.421862						
									268.390864	745.106632						
									476.715788	476.715788						
									1/2 = 238.357894							
43	⁻¹⁵² 624.712	^{-152.620} 4.712	+10.151	⁻³⁷ 587.954	^{-37.580} 7.954	-15.638			807.41054	73.686256						
44	635.580	15.580	+11.623	587.258	7.258	+14.380			84.359734	224.040400						
51	636.335	16.335	-10.151	602.334	22.334	+15.638	226.712434			255.446736						
49	625.429	5.429	-11.623	602.896	22.896	-14.380	266.120208			78.069020						
									492.832642	165.100788						
									151.755276	479.487134						
									327.731854	327.731854						
									1/2 = 163.865927							

面積計算書

工区

44

ブロック

44

計算者

精算者

備考

9. 10.

家日

家日

23-15

23-12

点	①	②	③	④	⑤	⑥	③ × ⑤	② × ⑥
	X	X-(定数)	X _{n-1} -X _{n+1}	Y	Y-(定数)	Y _{n-1} -Y _{n+1}		
	-152	-152,630		-37	-37,580			
44	635.580	5.580	+ 8.033	587.258	7.258	15.639	59,303,514	87,265,620
45	646.368	14.368	+ 9.550	586.695	6.695	14.623	63,937,250	210,103,264
52	645.130	15.130	- 8.033	601.881	21.881	15.639	175,770,073	236,618,070
51	636.335	6.335	- 9.550	602.334	22.334	14.623	213,289,700	92,636,705
							389,057,713	122,240,764
							266,917,009	179,902,325
								446,721,338
								266,917,009
								1/2 = 133,407,504.5
	-152	-152,640		-37	-37,580			
45	646.368	4.368	+ 7.407	586.695	6.695	15.709	49,589,865	68,616,912
46	652.537	12.537	+ 8.656	586.176	6.172	0.055	53,424,832	4,689,535
25	653.024	13.024	+ 0.289	586.640	6.640	15.312	1,918,960	199,423,598
26	652.826	-2.926	- 7.894	601.484	21.484	15.241	169,594,696	195,491,066
52	645.130	5.130	- 8.458	601.881	21.881	14.789	186,469,498	75,867,570
							354,664,194	104,933,657
							249,730,537	145,174,017
								394,906,554
								249,730,537
								1/2 = 124,865,268.5

面積計算書						工区	ブロック	計算者	精算者	備考		
						3	44			11. 泉田 24-1(A) 12. 泉田 25-1(A)		
点	①	②	③	④	⑤	⑥	③	×	⑤	②	×	⑥
	X	X-(定数)	X _{n-1} -X _{n+1}	Y	Y-(定数)	Y _{n-1} -Y _{n+1}	+		-	+		-
50	-152 626.290	-152.626,000 0.290	+26.162	-27 602.852	-37.601,000 1.852	-15.761			48.452024			4.507690
26	652.826	26.826	+26.335	601.484	0.484	+13.721			12.746190	368.079506		
27	652.625	26.625	-26.162	616.573	15.573	+15.761	407.420826			419.636625		
53	626.664	0.664	-26.335	617.245	16.245	-13.721	427.812075					9.110704
							835.232901	61.198164	787.716171	13.618434		
							774.034737		774.034737			
							$\frac{1}{2} = 387.0173685$					
53	-152 626.664	-152.626,000 0.664	+25.727	-27 617.245	-37.616,000 1.245	-9.668			32.03045	6.419552		
27	652.625	26.625	+25.841	616.573	0.573	+8.333			14.806893			221.866125
28	652.505	26.505	-25.727	625.578	9.578	+9.668	246.412206					256.250340
54	626.898	0.898	-25.841	626.241	10.241	-8.333	264.637681			7.483034		
							511.050887	46.837008	13.902586	478.116065		
							464.213879		464.213879			
							$\frac{1}{2} = 232.1069395$					

面積計算書

工
区

ブ
ロ
ック

計
算
者

精
算
者

備
考

13 泉田 26-2(1)
14 泉田 26-1(1)

点	①	②	③	④	⑤	⑥	③ ×	⑤	② ×	⑥
	X	X-(定数)	X _{n-1} -X _{n+1}	Y	Y-(定数)	Y _{n-1} -Y _{n+1}	+	-	+	-
14	626.898	26.898	-24.386	626.241	26.241	+9.149	666.154.026			246.348.782
28	642.404	42.404	-24.494	624.478	24.478	-7.841	642.024.432		411.691.704	
29	642.392	42.392	+24.386	634.082	34.082	-9.149	844.204.642		479.848.328	
44	627.119	27.119	+24.494	634.737	34.737	+7.841	844.484.078			212.640.079
							1318.229.448	1740.790.730	891.440.033	448.998.861
							432.441.172	432.441.172		
								1/2 = 216.220.586		
44	627.119	7.119	+24.042	634.737	4.737	-9.142		118.671.324	64.153.088	
29	642.392	32.392	+24.160	634.082	4.082	+7.849		102.703.120		246.244.808
30	642.279	32.279	-24.042	642.486	12.486	+9.142	315.304.472			284.417.408
47	627.340	7.340	-24.160	643.234	13.234	-7.849	332.967.440		57.611.660	
							648.271.912	221.374.444	122.764.742	549.662.216
							426.897.468			426.897.468
								1/2 = 213.448.734		

面積計算書						工区	ブロック	44	計算者	精算者	備考
	①	②	③	④	⑤	⑥	③ ×	⑤	② ×	⑥	15 泉田 27-111)
点	X	X-(定数)	X _{n-1} -X _{n+1}	Y	Y-(定数)	Y _{n-1} -Y _{n+1}	+	-	+	-	16 泉田 29-311)
57	⁻¹⁵² 627.340	^{-152620.00} 7.340-	-24.523-	⁻³⁷ 643.234	^{-37640.} 3.234	+16.6 ⁴ 1-	79.307382			122.144942	
20	652.279	32.279-	-24.725-	642.586	2.586	-15.360-	63.938850		494.805440		
21	652.065	32.065-	+24.523-	658.594	18.594	-16.6 ⁴ 1-		454.980662	433.59364-	433.91434-	
58	627.756	7.756	+24.725	659.227	19.227	+15.360		474.387574		119.132160	
							143.244232	941.368237	1029.399104	241.277100	
								788.12204	788.12204		
							1/2	394.061002			
58	⁻¹⁵² 627.756	^{-152620.} 7.756-	-24.062-	⁻³⁷ 659.227	^{-37640.} 9.227	+10.146	272.020074			78.692376	
21	652.065	32.065-	+24.178	658.594	8.594	+9.186	207.784732		294.549090		
22	651.934	31.934-	+24.062	668.413	18.413	-10.146		443.043606	324.002864		
59	628.003	8.003	+24.178	668.740	18.740	+9.186		455.094720		73.515458	
							429.804806	896.149326	618.541444	152.207938	
								466.343420	466.343420		
							1/2	233.171760			

面積計算書

工区: ω ブロック: 44 計算者: 精算者: 備考: 17. 泉田 30-1(1)
18. 泉田 32-1

点	①	②	③	④	⑤	⑥	③ ×	⑤	② ×	⑥
	X	X-(定数)	X _{n-1} -X _{n+1}	Y	Y-(定数)	Y _{n-1} -Y _{n+1}				
12	⁻¹⁵² 594.985	4.988	+56.288	⁻³⁷ 669.190	9.190	-25.897				
32	651.934	61.934	+56.747	668.413	8.413	+14.183				
33	651.735	61.735	-1.337	682.372	23.373	+26.070	31.249701			
34	650.597	60.597	-56.089	694.483	34.483	+10.937	1934.116987			
13	595.646	5.646	-55.609	694.310	34.310	-25.293	1907.944790			
							3873.311478	994.699231	271.978514	3150.590761
) 2878.612247) 2878.612247	
							1439.3061235		1439.3061235	
13	⁻¹⁵² 595.646	5.646	+54.497	⁻³⁷ 694.310	4.310	-17.211				
34	650.597	60.597	+53.153	694.483	4.483	+17.733				
35	648.799	58.799	-54.497	712.063	22.043	+17.211	1201.277371			
12	596.100	6.100	-53.153	711.694	21.694	-17.733	1153.101182			
							2354.378553	473.166969	205.344606	2,086.556190
) 1,881.211584) 1,881.211584	
							940.605792		940.605792	

面積計算書						工区	3	ブロック	44	計算者	精算者	備考	19.泉田 33-1 (H)	20.泉田 27-1 (H)
点	①	②	③	④	⑤	⑥	③ × ⑤		② × ⑥					
	X	X-(定数)	X _{n-1} -X _{n+1}	Y	Y-(定数)	Y _{n-1} -Y _{n+1}	+	-	+	-				
12	-152 596.100	-152.590 6.100	+52.427	-37 711.694	-37.700 1.694	-10.048		88.811338		61.292800				
35	648.799	58.799	+52.081	712.043	2.043	+13.398		106.401483		787.789002				
8	648.181	58.181	-2.189	725.092	15.092	+14.505	33.036388			843.915405				
9	646.610	56.610	-48.731	726.548	16.548	+0.085	806.400588			4.811850				
10	599.450	9.450	-50.238	725.177	15.177	-4.457	762.462126		42.118650					
11	596.372	6.372	-3.350	722.091	12.091	-13.483	40.504850		85.913676					
							1642.403852	195.212821	189.325126	1635.516257				
							1447.191131			1447.191131				
								1/2 = 723,595565 ^{m²}						
15	-152 594.146	-152.590 4.146	+32.167	-37 636.994	-37.636 0.994	-33.053		31.973998		137.037738				
56	627.155	37.155	+33.857	636.137	0.137	+31.746		4.638409		1179.522630				
59	628.003	38.003	-32.167	668.740	32.740	+33.053	1053.147500			1266.113779				
14	594.988	4.988	-33.857	669.190	33.190	-31.746	1123.713850		158.349028					
							2176.861410	36.612407	295.386786	2435.625789				
							2140.249003			2140.249003				
								1/2 = 1070.124505 ^{m²}						

面積計算書

工区 3
 ブロック 44
 計算者 
 精算者
 備考 21 奥田 24-110

点	①	②	③	④	⑤	⑥	③ × ⑤		② × ⑥	
	X	X-(定数)	X _{n-1} -X _{n+1}	Y	Y-(定数)	Y _{n-1} -Y _{n+1}	+	-	+	-
16	-152 593.297	-152.570 3.297	+32.144	-37 604.553	-37.650 4.553	-34.142			146.351632	112566174
50	626.290	36.290	+33.858	602.852	2.852	+31.584			965.630168	1146.183360
56	627.155	37.155	-32.144	636.137	36.137	+34.142	1161.527728			1268.546010
15	594.146	4.146	-33.858	636.994	36.994	-31.584	1252.542252 61.527728			120.747264
							244.130580	242.714648		243.513438
							111.921728	111.921728		2414.729370
							2171.215932			2171.215932
										1/2 = 1085.607966

分筆後の座標なし

面積計算書							工区		ブロック		計算者		精算者		備考		階切 I, II		
点	①	②	③	④	⑤	⑥	③	×	⑤	②	×	⑥							
	X	X-(定数)	X _{n-1} -X _{n+1}	Y	Y-(定数)	Y _{n-1} -Y _{n+1}	+		-	+		-							
	-152	-152.590		-37	-37.535														
I	591.486	1.486	+2.920	535.349	0.349	-2.076			1.019080	4.570936									
1	594.485	4.485	+0.079	535.272	0.272	+2.999			0.021488			13.450515							
21	591.565	1.565	-2.999	538.348	2.348	+0.077	10.040652					0.120505							
							10.040652		1.040568	4.570936		13.571020							
) 9.000084) 9.000084							
							4.500042					4.500042							
	-152	-152.652		-37	-37.533														
Z	652.200	0.250	+0.041	533.781	0.781	-0.000			0.032021	0.750000									
II	655.249	2.249	+2.958	533.703	0.703	+2.922			2.079474			9.493578							
4	655.208	2.208	-2.999	536.703	2.703	+0.078	11.105297					0.250224	0.250224						
							11.105297		2.111495	0.750000		9.743802							
) 8.993802) 8.993802							
							4.496251					4.496901							

面積計算書						工区	ブロック	44	計算者	精算者	備考	陸切 III, IV	
点	① X	② X-(定数)	③ X _{n-1} -X _{n+1}	④ Y	⑤ Y-(定数)	⑥ Y _{n-1} -Y _{n+1}	③ ×	⑤	② ×	⑥			
							+	-	+	-			
7	-152 649.751	-152.646 2.751	+2.999	-37 723.626	-37.723 0.626	+0.075					1.877374	0.281325	
Ⅲ	449.609	2.609	-3.141	726.625	2.623	+2.922	11.379843					10.545498	
9	646.610	0.610	+0.142	726.548	2.548	-2.997		0.503816	1.828170				
							11.379843	2.381196	1.828170			10.826873	
) 8.998653) 8.998653	
							4.499326					4.499326	
10	-152 599.450	-152.596 2.450	+0.079	-37 725.177	-37.722 2.177	+2.999					0.250983	10.346550	
Ⅳ	596.451	0.451	-3.078	725.090	2.090	-3.086	9.511020				1.391786		
11	596.372	0.372	+2.999	722.091	0.091	+0.087		0.272909				0.032364	
							9.511020	0.523892	1.391786			10.378914	
) 8.987128) 8.987128	
							4.493564					4.493564	

面積計算書						工区	ブロック	計算者	精算者	備考	通路	
	①	②	③	④	⑤	⑥	③	×	⑤	②	×	⑥
点	X	X-(定数)	X _{n-1} -X _{n+1}	Y	Y-(定数)	Y _{n-1} -Y _{n+1}	+		-	+		-
18	592.745	2.745	+1.825	582.445	13.445	-6.672			24.537125	18.314640		
37	594.793	4.793	+59.854	585.318	15.318	-1.815			916.843572	8.699295		
39	652.599	62.599	+59.827	581.620	11.630	-5.815			695.788010	364.013185		
5	654.620	64.620	+2.011	579.503	9.503	-1.394			19.110533	90.080280		
199	654.610	64.610	-0.114	580.238	10.236	+8.541	1.166904					551.834010
6	654.506	64.506	-2.073	588.044	18.044	+5.936	37.405212					382.907616
46	652.537	62.537	-59.594	586.172	16.172	+1.818	963.754168					113.692266
40	594.912	4.912	-59.569	589.862	19.862	+5.818	1183.159478					28.578016
17	592.968	2.968	-2.167	591.990	21.990	-6.417	47.652390					19.045656
							2,233.138092	1.656,279240	500.153056	1,077.011908		
) 576.858852) 576.858852			
							288.429426			288.429426		

面積計算書

工区

3

ブロック

44

計算者

精算者

備考

水路 201
202

点	① X	② X-(定数)	③ X _{n-1} -X _{n+1}	④ Y	⑤ Y-(定数)	⑥ Y _{n-1} -Y _{n+1}	⑦ +	⑧ -	⑨ +	⑩ -
3	⁻¹⁵² 653.728	3.728	+ 2.110	⁻³⁷ 535.242	5.242	- 44.396		11.060620	165.508288	
4	655.208	5.208	+ 0.892	536.703	6.703	+ 44.261		5.979076	230.511288	
5	654.620	4.620	- 2.110	579.503	49.503	+ 44.396	104.451336		205.109520	
24	653.098	3.098	- 0.892	581.099	51.099	- 44.261	45.580308		137.120578	
							150.031638	17.039696	302.628866	435.620808
							2) 132.991942			132.991942
							66.495971			
25	⁻¹⁵² 653.024	13.024	+ 2.771	⁻³⁷ 586.640	6.640	- 95.329		18.399440	1241.564896	
6	654.506	14.506	+ 0.209	588.044	8.044	+ 96.819		1.681196	1404.456414	
K101	653.233	13.233	- 4.211	683.459	103.459	+ 124.111	435.665849		1.642.360863	
K102	650.295	10.295	- 3.482	712.155	132.155	+ 40.167	460.163710		413.519265	
7	649.751	9.751	- 2.114	723.626	143.626	+ 12.926	303.625364		126.041426	
8	648.181	8.181	- 0.952	725.081	145.081	- 11.583	138.117112		94.760523	
35	648.799	8.799	+ 3.554	712.043	132.043	- 41.708		469.280822	366.988692	
33	651.735	11.735	+ 4.225	683.373	103.373	- 125.403		436.750925	1471.604205	
							1.337.572035	926.112383	3.174.918315	3.586.377968
) 411.459652			411.459652
							205.729826			205.729826

計年 月 算日	計 算 者	檢 查 者
---------------	-------------	-------------

B.NO. 44

各筆面積計算書

地番	算式	隅切	地積	摘要
	泉田 20		1010 12	
	泉田 21-1(1)		1078 19	
	保 3-44-1		91 47	/
	泉田 23-7		814 51	
	泉田 23-16, 23-18, 23-19, 23-20, 23-30		232 20	
	泉田 23-22		238 35	
	" 23-37		163 86	
	" 23-15		133 40	
	" 23-14		124 86	
	" 24-1(1)		387 01	
	" 25-1(1)		232 10	
	" 26-2(1)		216 27	
	" 26-1(1)		213 44	
	" 27-1(1)		394 06	
	" 29-3(1)		233 17	
	" 30-1(1)		1439 30	
	" 32-1		940 60	
	" 33-1(1)		723 59	
	" 27-1(2)		1070 12	
	" 24-1(2)		1085 60	
	通路		288 42	/
	水路 物1		66 49	
	" 物2		205 72	
	合計		11382 85	
	全体		11283 07	

