

BLOCK NO. 66

街区計算

街区略図

工区

3

ブロック

66

記入者



点検者

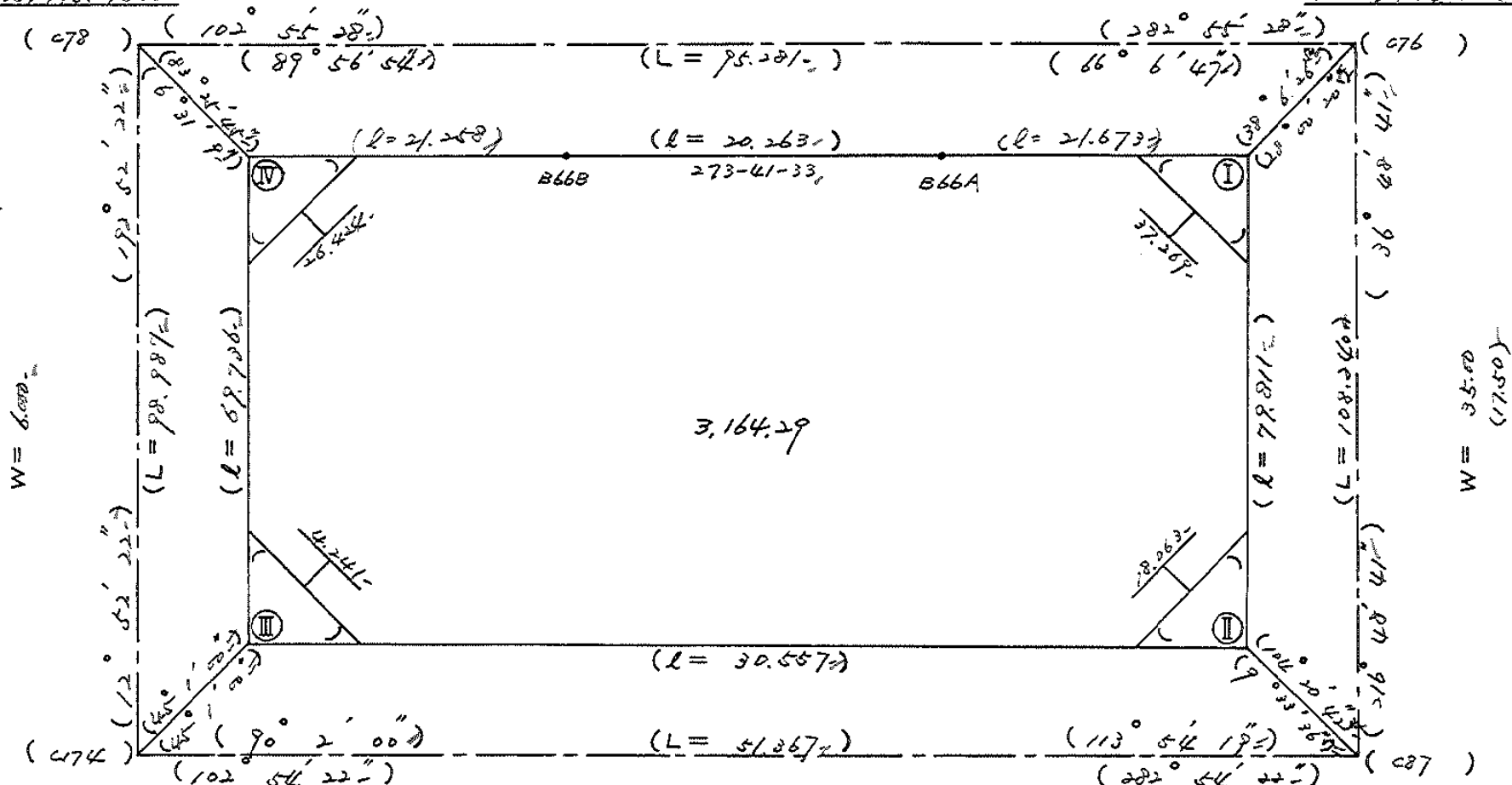


$X = -153,249.090$
 $Y = -38,145.183$

$W = 52.50$

$W = 46.00$

$X = -153,270.401$
 $Y = -38,052.215$



$X = -153,345.589$
 $Y = -38,167.226$

$W = 6.000$

$X = -153,257.062$
 $Y = -38,117.167$

面積計算書

工区

ウ

ブロック

66

計算者



精算者



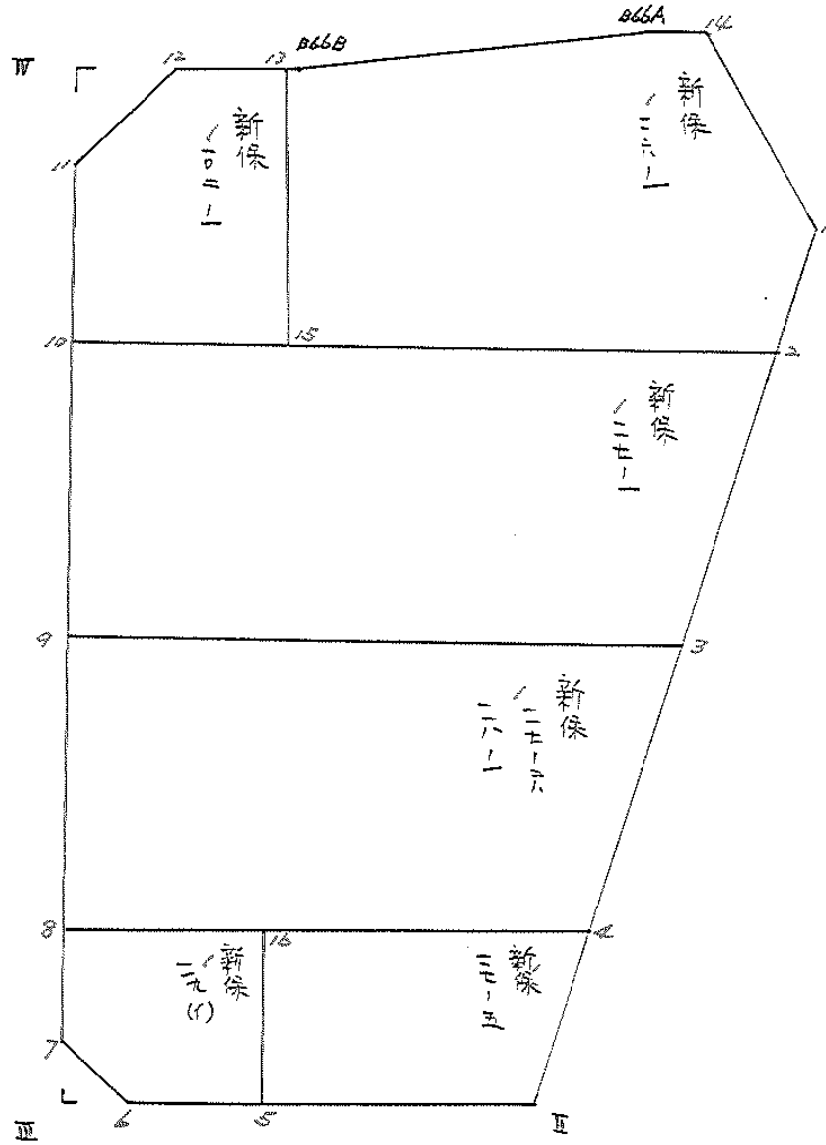
備考

全体

点	①	②	③	④	⑤	⑥	③	×	⑤	②	×	⑥
	X	X-(定数)	X _{n-1} -X _{n+1}	Y	Y-(定数)	Y _{n-1} -Y _{n+1}	+		-	+		-
I	-152,286.259	-152,200 86.259	+ 68,749	-38,086.042	-38,000 86.042	+ 26.693			5915.301458			2302.511487
II	-152,350.160	150.160	+ 57.076	-38,123.859	133.859	+ 77.602			7640.136284			11652.716320
III	-152,343.335	143.335	- 74.808	-38,163.644	163.644	+ 14.248	12241.880352					2042.237080
IV	-152,275.352	75.352	- 63.229	-38,148.107	148.107	- 36.257	9364.657503					2732.027464
B66B	-152,280.106	80.106	+ 6.059	-38,127.387	127.387	- 40.941			771.837833	3279.619746		
B66A	-152,281.411	81.411	+ 6.153	-38,107.166	107.166	- 41.345			659.392398	3365.937795		
									21606.53785	14986.667973	9377.595005	15997.464887
									6619.869882			6619.869882
									$\frac{1}{2} = 3309.934941$			
				3309.93	$-(102.861 \pm 4.50, 38.28)$							

面地計算

BNO.66



7

面積計算書

工区

3

ブロック

66

計算者



精算者



備考

新保

116-1
117-1

点	①	②	③	④	⑤	⑥	③ ×	⑤	② ×	⑥
	X	X-(定数)	X _{n-1} -X _{n+1}	Y	Y-(定数)	Y _{n-1} -Y _{n+1}	+	-	+	-
1	-152, 298.269	-152,200 98.269	+23.523-	-38, 095.029	-38,090 5.029	+0.472-			118.297167	46.382968
2	306.427	106.427	+0.870-	101.134	11.134	+37.868-			9.686580	4030.177636
15	299.139	99.139	-26.570-	132.897	42.897	+27.338-	1139.773290			2710.261982
13	279.857	79.857	-19.033-	128.472	38.472	-5.510-	732.237576		440.012070	
B.66 B	280.106	80.106	+1.554-	127.387	37.387	-21.306-			58.079398	1706.738436
B.66 A	281.411	81.411	+2.798-	107.166	17.166	-26.725-			48.030468	2175.708975
14	282.904	82.904	+16.252-	100.662	10.662	-12.137-			179.739996	1006.205848
									1872.010866	413.853609
									5328.665329	6786.822586
									1458.157257	1458.157257
									1/2 = 729.0786285	
2	-152, 306.427	-152,290 16.427	+28.590-	-38, 101.134	-38,100 1.134	-38.809-			32.421060	637.515443
3	323.228	33.228	+6.917-	113.706	13.706	+55.656-			94.804402	1819.337568
9	313.344	23.344	-28.590-	156.790	56.790	+38.809-	1623.626100			905957296
10	294.638	4.638	-6.917-	152.515	52.515	-55.656-	363.246755		258.132528	
									1986.872355	127.225462
									895.647971	2755.294864
									1859.646893	1859.646893
									1/2 = 929.8234465	

面積計算書

工区 3

ブロック

66

計算者



精算者



備考

新保

117-6, 118-1
117-5

点	①	②	③	④	⑤	⑥	③ × ⑤		② × ⑥	
	X	X-(定数)	X _{n-1} -X _{n+1}	Y	Y-(定数)	Y _{n-1} -Y _{n+1}	+	-	+	-
3	-152, 323.228	-152,300- 23.228	+ 26.769-	-38, 113.706	-38,100- 13.706	- 30.449-			366.895914	707.269372
4	340.113,	40.113-	+ 8.981-	126.341,	26.341-	+ 47.395-			236.568521	1901.155635
8	332.209,	32.209-	- 26.769-	161.101,	61.101-	+ 30.449-	1635.612669			780.731841
9	313.344,	13.344-	- 8.981-	156.790,	56.790-	- 47.395-	510.030990		632.438880	
							2145.643659	603.464435	1339.708252	2881.887476
							1542.179224			1542.179224
									1/2 = 771.089612	
4	-152, 340.113	-152,300, 40.113,	+ 15.170-	-38, 126.341	-38,100- 26.341-	- 15.009-			399.592970	602.056017
II	350.160,	50.160,	+ 6.021-	133.859,	33.859-	+ 25.087-			203.865039	1258363920
5	346.134,	46.134,	- 15.170-	151.428,	51.428-	+ 15.009-	780.162760			692.423206
16	334.990,	34.990,	- 6.021-	148.868,	48.868-	- 25.087-	294.234228		877.194130	
							1074.396988	603.458009	1479.850147	1950.789126
							470.938979			470.938979
									1/2 = 235.4694895	

面積計算書

工区 3

ブロック

66

計算者



精算者



備考

新保

11P (1)
102-1

点	①	②	③	④	⑤	⑥	⑦	⑧	⑨	⑩	⑪	⑫	
	X	X-(定数)	X _{n-1} -X _n	Y	Y-(定数)	Y _{n-1} -Y _n	+	-	+	-	+	-	
5	-152, 346.134	-152,300= 46.134	+ 9.015	-38, 151.428	-38,100= 51.428	+ 11.852					463.623420	546.780168	
6	344.005	44.005	- 5.724	160.720	60.720	+ 11.548	347.561280					508.169740	
7	340.410	40.410	- 11.796	162.976	62.976	+ 0.381	742.864896					15.396210	
8	332.209	32.209	- 5.420	161.101	61.101	- 14.108	331.167420				454.404572		
16	334.990	34.990	+ 13.925	148.868	48.868	- 9.673				680.486700	338.458270		
										1421.593596	1144.110320	792.862842	1070.346118
										277.483276			277.483276
													1/2 = 138.741638
10	-152, 294.638	-152,200= 94.638	- 15257	-38, 152.515	-38,100= 52.515	+ 17.159	801.221355					1623.893442	
11	283.882	83.882	- 17.329	150.056	50.056	- 12.937	867.420424				1085.181434		
12	277.309	77.309	- 4.025	139.578	39.578	- 21.584	159.301450				1668.637456		
13	279.857	79.857	+ 21.830	128.472	28.472	- 6.681				621.543760	533.524617		
15	299.139	99.139	+ 14.781	132.897	32.897	+ 24.043				486.250357		2383.596977	
										1827.943229	1107.794317	3287.343557	4007.492419
										720.148912			720.148912
													1/2 = 360.074456

面積計算書

工区

3

ブロック

66

計算者



精算者



備考

隅切 I

点	①	②	③	④	⑤	⑥	③ × ⑤		② × ⑥	
	X	X-(定数)	X _{n-1} -X _{n+1}	Y	Y-(定数)	Y _{n-1} -Y _{n+1}	+	-	+	-
I	152,286.269	152,250 = 36.269 =	+15.365 =	38,086.042	38,050 = 36.042 =	-5.633 =		552,785,330 =		204,246,947 =
1	152,297.269	42.269 =	-33.55 =	38,095.029	45.029 =	+14.620 =	151,072,295 =			705,692,780 =
14	152,282.904	32.904 =	-12.010 =	38,100.662	50.662 =	-2.987 =	608,450,620 =			295,708,242 =
							759,522,915 =	552,785,330 =	499,955,195 =	705,692,780 =
							205,707,525 =			205,737,525 =
							1/2 = 102,868,792.5 =			

面積計算書

工区

2

ブロック

66

計算者

精算者



備考

陽功 Ⅲ. Ⅳ.

点	①	②	③	④	⑤	⑥	③ × ⑤		② × ⑥	
	X	X-(定数)	X _{n-1} -X _{n+1}	Y	Y-(定数)	Y _{n-1} -Y _{n+1}	+	-	+	-
Ⅲ	-152,343.335-	-152,300- 43.335=	+ 3.595-	-38,163.644-	-38,100- 63.644=	- 2.256-		228,800180-		97,763760-
6	-152,344.005-	44.005=	- 29.25-	-38,160.720-	60.720=	- 0.668-	177,606000-			29,395940-
7	-152,340.410-	40.410=	- 0.670-	-38,162.976-	62.976=	+ 2.924-	42,193920-			118,158840-
							219,799920-	228,800180-	127,159100-	118,158840-
								9,000260-	9,000260=	
								1/2 = 4.500130=		
Ⅰ	-152,283.882-	-152,250- 33.882=	- 1.957-	-38,150.056-	-38,130- 20.056=	+ 8.529-	39,249590-			288,979578-
Ⅱ	-152,275.352-	25.352=	- 6.573-	-38,142.107-	18.107=	- 10.478-	119,017311-			265,638256-
12	-152,277.309-	27.309=	+ 8.530-	-38,139.578-	9.578=	+ 1.949-		81,700340-		53,225241-
							158,266903-	81,700340-	265,638256-	342,204819-
							76,566563-			76,566563=
								1/2 = 38,283281 ^{1/2} -		

計年
月
算日

計
算
者



檢
查
者



B.NO. 66

各筆面積計算書

地番	算式	隅切	地積	摘要
新保	116-1,		729.07	
新保	117-1,		929.82	
新保	117-6. 118-1,		771.08	
新保	117-5,		235.46	
新保	119 (1),		138.74	
新保	102-1,		360.07	
隅切 I		102.86,		
隅切 II		4.50,		
隅切 III		38.28,		
計			3309.88	
全体			3309.93	
		差	0.05	