

BLOCK NO. 69-1

街区計算

街区略図

工区

ウ

ブロック

69-1

記入者

点検者



X -152, 126.743

X -152, 142.673

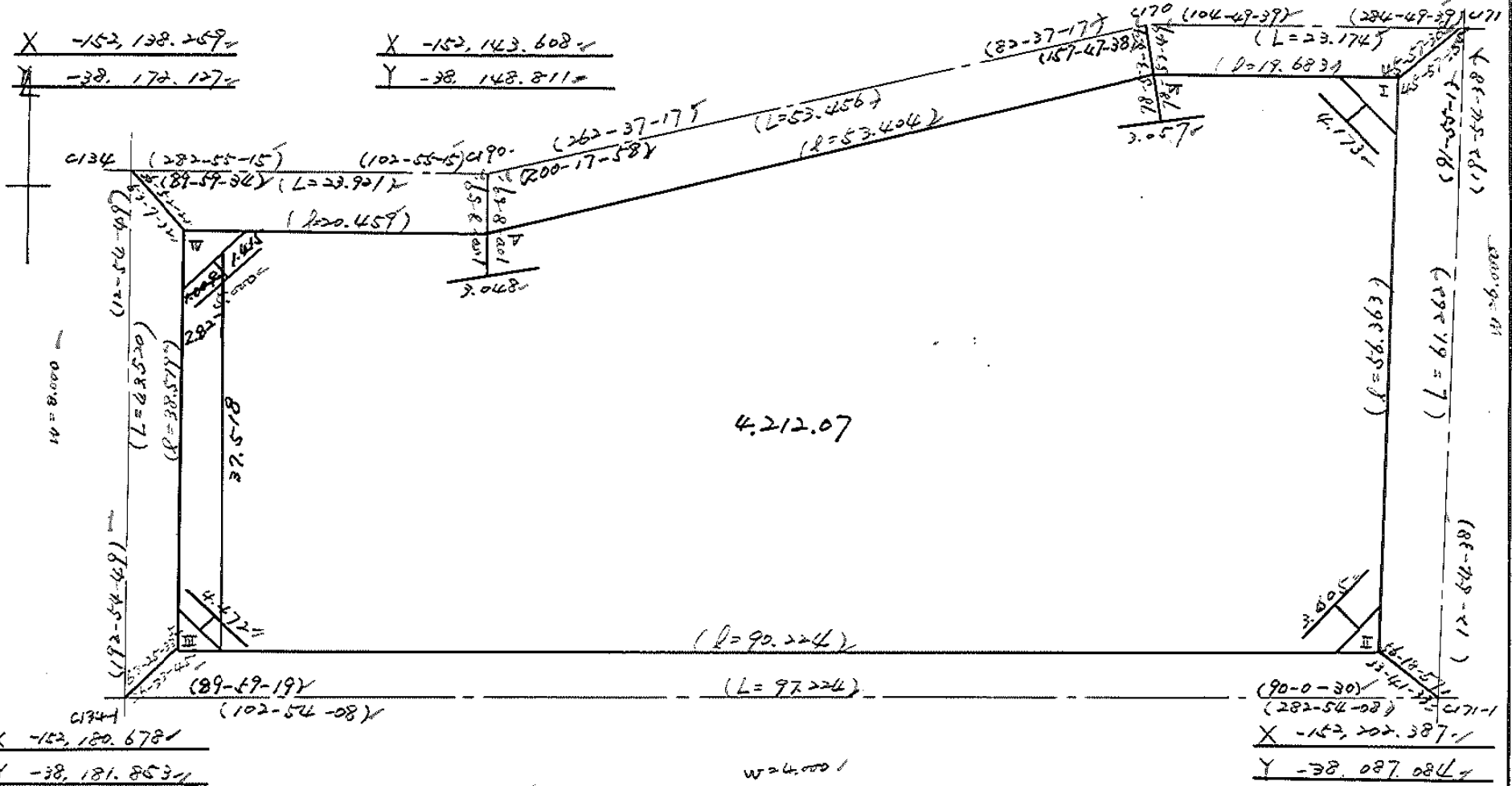
Y -38, 095.798

Y -38, 073.396

W=6.000

X -152, 138.259
Y -38, 172.127

X -152, 143.608
Y -38, 148.811



4.212.07

(L=90.224)

(R=97.224)

W=4.000

X -152, 180.678

Y -38, 181.853

(90-0-0)

X -152, 202.387

Y -38, 087.084

面積計算書

工
区

3

ブ
ロ
ック

6P-1

計
算
者



精
算
者



備
考

全
作

点	①	②	③	④	⑤	⑥	⑦	⑧	⑨	⑩	⑪	⑫
	X	X-(定数)	X _{n-1} -X _{n+1}	Y	Y-(定数)	Y _{n-1} -Y _{n+1}	+	-	+	-	+	-
I	-152,144.830	44.830	+59.975	-38,076.968	26.968	-6.435			1,617.405800		288.481050	
II	-152,199.768	99.768	+34.792	-38,089.561	39.561	+100.539			1,376.406312			1,020.574952
III	-152,179.622	79.622	-57.691	-38,177.507	127.507	+79.338	7,356.006337					6,317.050236
IV	-152,142.077	42.077	-32.970	-38,168.899	118.899	-28.549	3,920.100030				1,201.256293	
V	-152,146.652	46.652	-2.284	-38,148.958	98.958	-72.903	226.020072				3,401.070756	
VI	-152,139.793	39.793	-1.822	-38,095.996	45.996	-71.990	83.804712				2,864.698090	
							11,585.931151	2,993.812112	7,755.506149	16,347.625188		
							8,592.119039				8,592.119039	
									$\frac{1}{2} = 4296.0595195$			
									$4296.05 - (4.4P + 1.1P + 2.0P + 4.4P + 7.1P) = 4212.07$			

画地計算

画地略図

工区

W

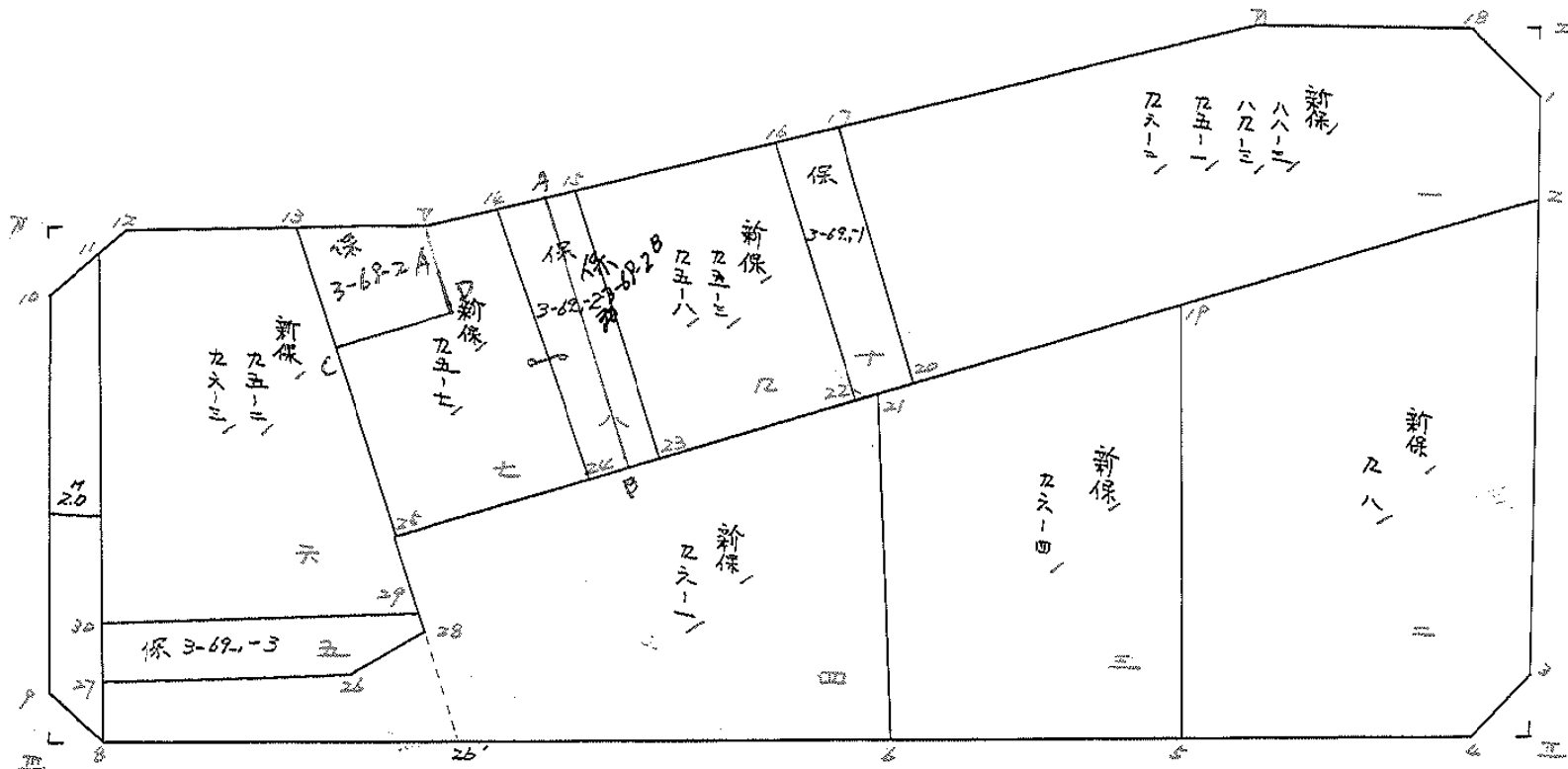
ブロック

69-1

記入者



点検者



面積計算書

工区

J

ブロック

6P-1

計算者



精算者



備考

1. 新保 88-3 95-1
89-3 96-2
2. 新保 98

点	①	②	③	④	⑤	⑥	③ ×	⑤	② ×	⑥
	X	X-(定数)	X _{n-1} -X _{n+1}	Y	Y-(定数)	Y _{n-1} -Y _{n+1}	+	-	+	-
	-152	152100		-38	38000					
1	167.754	47.754+	10.447	77.638	77.638-	0.681		811.084186	37.520474	
2	154.509	54.509+	15.139	79.187	79.187+	44.508		1198.811993		2426.086572
20	162.893	62.893-	10.854	122.146	122.146+	46.618	1325.772894			2931.946896
17	143.655	43.655-	23.100	125.805	125.805-	26.150	2906.095500		1141.578250	
11	139.793	39.793+	0.407	95.996	95.996-	45.937		39.070372	1827.971041	
18	144.062	44.062+	7.961	79.868	79.868-	18.358		635.829148	808.890196	
								3231.868184	2884.785699	3810.959961
								1547.072485		1547.072485
								× 1/2 = 773.5362425		
	-152	152100			38000					
2	154.509	54.509+	38.403	79.187	79.187-	15.215		3041.018361	829.354425	
3	197.819	97.819+	44.812	89.114	89.114+	12.323		3993.376568		1205.423537
4	199.321	99.321-	3284	91.510	91.510+	23.292	300.518860			2313.384732
5	194.535	94.535-	39.905	112.406	112.406+	12.819	4285.561430			1211.844165
19	159.416	59.416-	40.026	104.329	104.329-	33.219	4175.872554		1973.740104	
								8961.952824	7034.394929	2803.094539
								1927.557895		1927.557895
								× 1/2 = 963.7789475		

座標法面積計算

新保95-3
新保95-8

STATION	X	Δx	Y	Δy	(+) E ₁	(-) E ₂
					Δx · Δy	Δx · Δy
22	- 163370		- 124594			
16	- 143995	19395	- 128285	252.879	4904.588205	
X	- 141187	2788	- 106780	235.065	655.361220	
4	- 159205	- 18018	- 103259	210.039		3784.482702
22	- 163370	- 4165	- 124594	227.853		949.007795
					5559.949925	4733.490497
						826.458988
						1/2 413.229494

座標法面積計算 (DESCRIPTION OF APPLICATION)

(BLOCK)

新保88-3
新保89-3
新保95-1
新保96-2

点 STA. NO	X	Δx	Y	Δy	(+) E ₁	(-) E ₂
					Δx · Δy	Δx · Δy
X	141.187		106.780			
VI	139.793	- 1.394	95.996	202.776		282.669744
18	144.062	4.269	78.868	175.864	750.763416	
	147.754	3.692	77.638	157.506	581.512152	
2	154.509	6.755	79.187	156.825	1059.352875	
Y	159.205	4.696	103.259	182.446	856.766416	
X	141.187	-18.018	106.780	210.039		3784.482702
					3248.37859	1067.151446
						218.757527
						1/2 409.378735

面積計算書

工
区

3
~~87-1~~

ブ
ロ
ック

69-1

計
算
者



精
算
者



備
考

3.新保 96-4

点	①	②	③	④	⑤	⑥	③ × ⑤		② × ⑥	
	X	X-(定数)	X _{n-1} -X _{n+1}	Y	Y-(定数)	Y _{n-1} -Y _{n+1}	+	-	+	-
	-152	-152.150		-32	-32.100					
19	159.416	9.416	+31.299	104.329	4.329	-11.500		125.493371	108.284000	
5	194.535	44.535	+31.048	112.406	12.406	+25.847		225.181488		1151.096165
6	190.464	40.464	-31.299	130.176	30.176	+11.500	944.478626			465.336000
21	163.236	13.236	-31.048	123.906	23.906	-25.847	742.733488		342.110892	
							1686.712112	520.674859	450.394892	1616.432165
							1166.037259			1166.037259
							× 1/2 = 583.0186265			

面積計算書

工区

3

ブロック

69-1

計算者



精算者



備考

4新保96-1

点	①	②	③	④	⑤	⑥	③ × ⑤		② × ⑥	
	X	X-(定数)	X _{n-1} -X _{n+1}	Y	Y-(定数)	Y _{n-1} -Y _{n+1}	+	-	+	-
	-152	-152.160		-38	-38.120					
21	163.236	2.236	+21.760	123.906	3.906	-21.748		84.994560	70.376528	
6	190.464	20.464	+16.833	130.176	10.176	+51.652		171.292608		1573.526528
8	180.069	20.069	-13.319	175.558	65.558	+44.712	739.977002			897.325128
27	177.145	17.145	+1.904	174.888	64.888	-21.761		104.506752	373.092345	
26	181.973	21.973	+4.050	153.797	33.797	-25.241		136.877850	554.620493	
28	181.195	21.195	-13.269	149.647	29.647	-1.873	393.386063		39.698235	
25	168.704	8.704	-17.849	151.924	31.924	-25.741	573.323116		224.049664	
							1706.686161	487.671770	1261.837265	2470.851656
							1209.014391			1209.014391
							× 1/2 = 604.5071955			

面積計算書

工区

3

ブロック

LP-1

計算者



精算者



備考 (新保 95-2
新保 96-3)

5. 示

点	①	②	③	④	⑤	⑥	③	⑤	②	⑥	
	X	X-(定数)	X _{n-1} -X _{n+1}	Y	Y-(定数)	Y _{n-1} -Y _{n+1}	+	-	+	-	
	-152	-152.140		-38	-38.140						
13	144.980	4.980	+37.832	156.248	16.248	-16.216		614.894336	80.755680		
29	180.580	40.580	+29.963	149.759	9.759	+18.135		292.408917		735.918300	
30	174.943	34.943	-37.081	174.383	34.383	+17.415	1274.956023			608.532345	
11	143.499	3.499	-32.195	167.174	27.174	-8.408	874.866930		29.419592		
12	142.748	2.748	+1.481	165.975	25.975	-10.926		38.468975	30.024648		
								2149.922953	945.572228	140.199920	1344.450415
							合筆あり	1204.250725			1204.250725
								$\times \frac{1}{2} = 602.1253625$			
	-152	-152.170		-38	-38.140						
29	180.580	10.580	+6.252	149.647	9.759	-24.736		41.013268	261.706880		
28	181.195	11.195	+1.393	149.647	9.647	+4.038		13.438271		45.205610	
26	181.973	11.973	-4.050	153.797	13.797	+25.241	55.877850			302.210493	
27	177.145	7.145	-7.030	174.888	34.888	+20.586	265.262640			147.086970	
30	174.943	4.943	+3.435	174.383	34.383	-25.129		118.105605	124.212647		
								301.140490	192.557164	385.919527	494.502873
							合筆あり	108.583346			108.583346
								$\times \frac{1}{2} = 54.291673$			

面積計算書

工区

3

ブロック

69-1

計算者



精算者



備考

7 新保 95-7
8 未

点	①	②	③	④	⑤	⑥	③ × ⑤		② × ⑥	
	X	X-(定数)	X _{n-1} -X _{n+1}	Y	Y-(定数)	Y _{n-1} -Y _{n+1}	+	-	+	-
	-152	-152.160		-38	-38.160					
14	146.098	6.098	+19.882	144.694	4.694	-8.150		93.127288	49.698700	
24	166.534	26.534	+22.806	140.808	0.808	+7.240		18.265648		192.106160
25	168.704	28.704	-21.554	151.924	11.924	+15.440	257.009896			443.189760
13	144.990	4.990	-22.052	156.248	16.248	-2.966	258.300896		14.770680	
T	146.652	6.652	+1.118	148.958	8.958	-11.564		10.015044	76.923728	
							615.310792	121.407990	141.393108	635.295920
							493.902812			493.902812
							x 1/2 = 246.951406			
15	-152	-152.160		-38	-38.160					
15	145.540	5.540	+19.606	140.372	10.372	-8.134		203.353632	25.062360	
23	165.704	25.704	+20.994	136.550	6.550	+0.436		137.540700		11.206944
24	166.534	26.534	-19.606	140.808	10.808	+8.134	211.901668			215.827556
14	146.098	6.098	-20.994	144.694	14.694	-0.436	208.275896		2.658728	
							520.177544	240.864132	47.721088	227.036500
							179.313412			179.313412
							x 1/2 = 89.656706			

面積計算書

工区

2

ブロック

69-1

計算者



精算者



備考

9新保 95-3
10 未 95-8

点	①	②	③	④	⑤	⑥	③ × ⑤		② × ⑥	
	X	X-(定数)	X _{n-1} -X _{n+1}	Y	Y-(定数)	Y _{n-1} -Y _{n+1}	+	-	+	-
	-152	-152.140		-38	-38.120					
16	143.975	3.975	+17.830	128.285	8.285	-15.778		147.721550	62.717550	
22	163.370	23.370	+21.729	124.594	4.594	+8.265		99.823026		193.153050
23	165.704	25.704	-17.830	136.550	16.550	+15.778	298.086500			405.557718
15	145.540	5.540	-21.729	140.372	20.372	-8.265	442.663188		45.788100	
							737.749688	247.544576	108.505650	598.710762
							490.205112			490.205112
							× 1/2 = 245.102556			
	-152	-152.140		-38	-38.120					
17	143.655	3.655	+18.918	125.805	5.805	-6.139		109.818990	22.438045	
20	162.893	22.893	+19.715	122.146	2.146	-1.211		42.308390	27.723423	
22	163.370	23.370	-18.918	124.594	4.594	+6.139	86.909292			143.468430
16	143.975	3.975	-19.715	128.285	8.285	+1.211	163.338775			4.813725
							250.248067	152.17380	50.161468	148.282155
							98.120687			98.120687
							× 1/2 = 49.0603435			

面積計算書

工区

ウ

ブロック

69-1

計算者



精算者



備考

陽川

I.

II.

点	①	②	③	④	⑤	⑥	③ × ⑤		② × ⑥	
	X	X-(定数)	X _{n-1} -X _{n+1}	Y	Y-(定数)	Y _{n-1} -Y _{n+1}	+	-	+	-
I	152,144.830	152,140 4.830	+3.692	38,076.768	38,070 6.968	-2.230		25.725856	10.770900	
1	152,147.754	7.754	-0.768	38,077.638	7.638	+2.900	5.265984			22.486600
18	152,144.062	4.062	-2.924	38,077.268	9.868	-0.670	28.854032		2.721540	
							34.720016	25.725856	13.492440	22.486600
								8.994160		8.994160
									1/2 = 4.497080	
3	152,197.819	152,190 7.819	+0.447	38,089.114	38,080 9.114	-1.949		4.073958	15.239231	
II	152,199.768	9.768	+1.502	38,089.561	9.561	+2.396		14.360622		23.404128
4	152,199.321	9.321	-1.949	38,091.510	11.510	-0.447	22.432990		4.166487	
							22.432990	18.434580	19.405718	23.404128
							3.998410			3.998410
								1/2 = 1.999205		

面積計算書

工区

W

ブロック

69-1

計算者



精算者



備考

陽切

Ⅱ

Ⅳ

点	①	②	③	④	⑤	⑥	③	×	⑤	②	×	⑥
	X	X-(定数)	X _{n-1} -X _{n+1}	Y	Y-(定数)	Y _{n-1} -Y _{n+1}	+		-	+		-
9	-152,177.670	-152,150 27.670	+0.447	-38,177.060	-38,170 7.060	-1.447			3.155820	53.932708		
8	-152,180.069	30.069	+1.750	-38,175.568	5.558	+0.447			10.838100			13.440843
Ⅲ	-152,179.622	29.622	-2.397	-38,177.507	7.507	+1.502	17.994279					44.492244
							17.994279	-13.993920	53.932708	57.933087		
							4.000359		1/2 = 2.0001795			4.000359
10	-152,145.001	-152,140 5.001	-0.671	-38,169.569	-38,160 9.569	+2.924	6.420799					14.622924
Ⅳ	-152,142.077	2.077	-2.553	-38,168.899	8.899	-3.594	20.049447			7.464738		
12	-152,142.748	2.748	+2.924	-38,165.975	5.975	+0.670			17.470900			1.841160
							26.470246	17.470900	7.464738	16.464084		
							8.999346					8.999346
									1/2 = 4.499673			

面積計算書

工区

ウ

ブロック

69-1

計算者

青井

精算者

青井

備考

水路

点	①	②	③	④	⑤	⑥	③	×	⑤	②	×	⑥
	X	X-(定数)	X _{n-1} -X _{n+1}	Y	Y-(定数)	Y _{n-1} -Y _{n+1}	+		-	+		-
11	-152,143.47	^{-152,140} 3.499	+35.068	-38,167.174	^{-38,160} 7.174	+5.989			251.577832			20.955511
8	-152,180.06	40.069	+34.173	-38,175.558	15.558	+9.886			531.663534			396.122134
9	-152,177.672	37.672	-35.068	-38,177.060	17.060	-5.989	598.260080			225.617608		
10	-152,145.001	5.001	-34.173	-38,169.569	9.569	-9.886	327.001437			49.439886		
							925.261517	783.241366		275.057494	417.077645	
							142.020151					142.020151
										1/2 = 71.0100755		

計年
月
算日

計
算
者



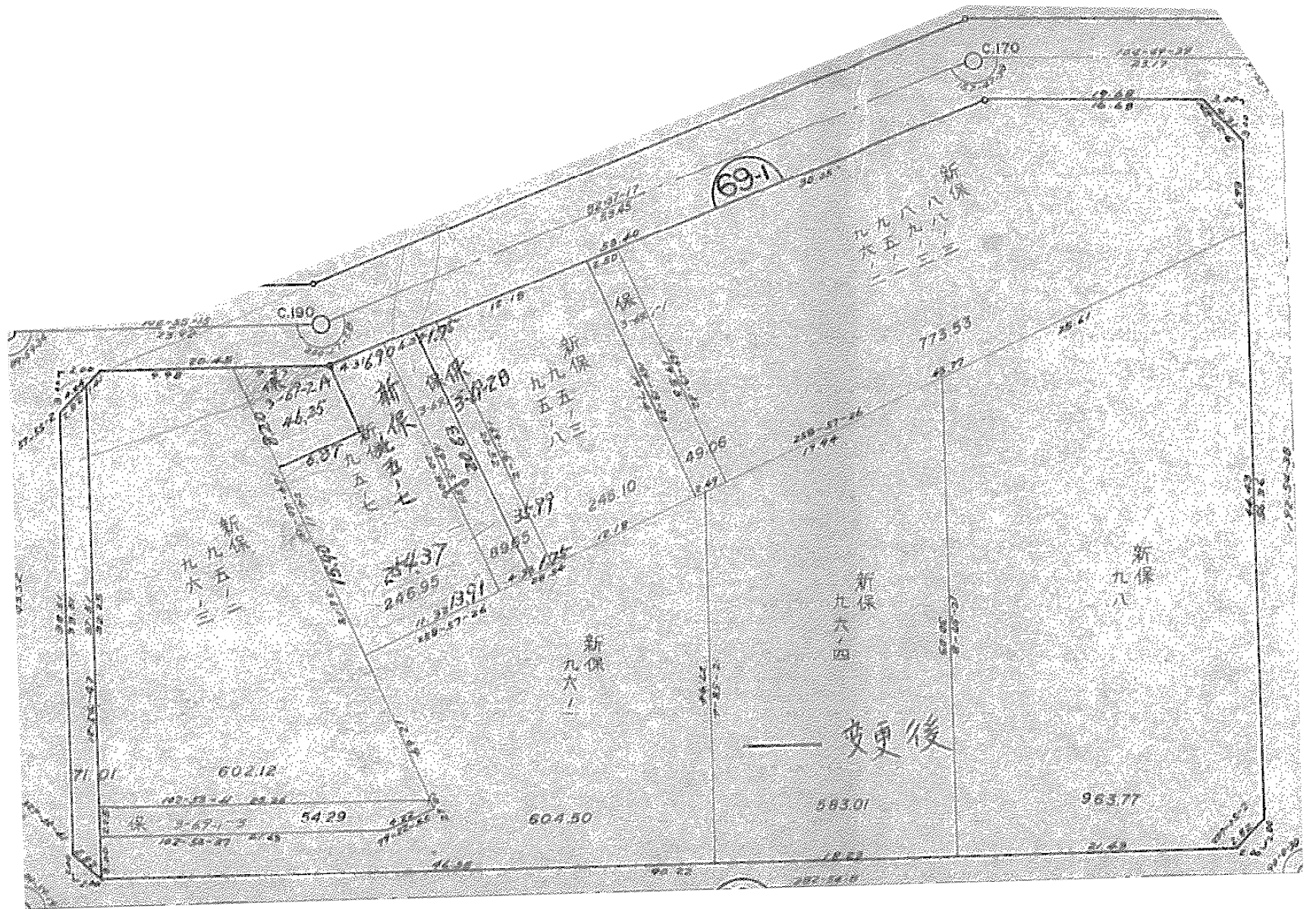
檢
查
者



B.NO. 69-1

各筆面積計算書

地番	算式	隅切	地積	摘要
1	新保 28-3 95-1 89-3 96-2		270 60	
2	新保 98		963 77	
3	新保 96-4		583 01	
4	新保 96-1		604 50	
5	水 ㊸		54 29	
6	新保 95-2 96-3		602 12	
7	新保 95-7		246 95	
8	水 ㊸		89 65	
9	新保 95-3 95-8		245 10	
10	水 ㊸ ㊹		48 06	
	水路	71 01		
	隅切 I	4 49		
	II	1 99		
	III	2 00		
	IV	4 49		
		83 98	4,211 98	
		合計	4,295 96	
		全体	4,296 05	
		差	0 09	



面積計算書

工区 3 ブロック 69-1 計算者 精算者 備考 係 3-69-2B
係 3-69-2A

点	①	②	③	④	⑤	⑥	③ × ⑤		② × ⑥	
	X	X - (定数)	X _{n-1} - X _{n+1}	Y	Y - (定数)	Y _{n-1} - Y _{n+1}	+	-	+	-
15	-152.145.540	-152.100.000	+19.93P	-38.140.372	-38.100.000	-5.558			804.977.308	253.111.320
23	-152.165.704		+20.49P	-38.136.550		-2.104			749.238.450	138.241.216
B	-152.166.039		-19.93P	-38.138.268		+5.558	763.025.652			367.044.762
A	-152.145.765		-20.49P	-38.142.108		+2.104	863.171.892			96.289.560
							1626.197.546	1554.215.758	391.352.536	463.334.322
							71.981.786		71.981.786	
								Σ = 35.990.893		
13	-152.144.980	-152.100.000	-6.401	-38.156.248	-38.100.000	-5.819	360.043.448			261.738.620
V	-152.146.652		+6.841	-38.148.958		-8.232			334.921.678	384.039.264
D	-152.151.821		+6.401	-38.148.016		+5.819			307.350.416	301.546.399
C	-152.153.053		-6.841	-38.154.777		+8.232	374.729.457			436.732.296
							734.772.905	142.272.094	738.278.695	645.777.884
							92.500.811		92.500.811	
								Σ = 462.504.055		

面積計算書

工区

マ

ブロック

69-1

計算者

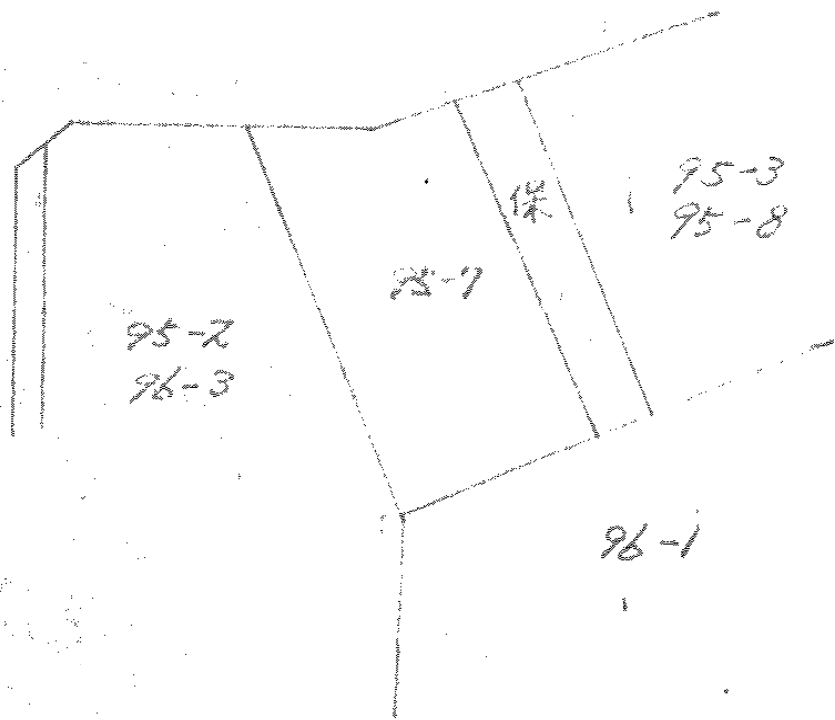


精算者

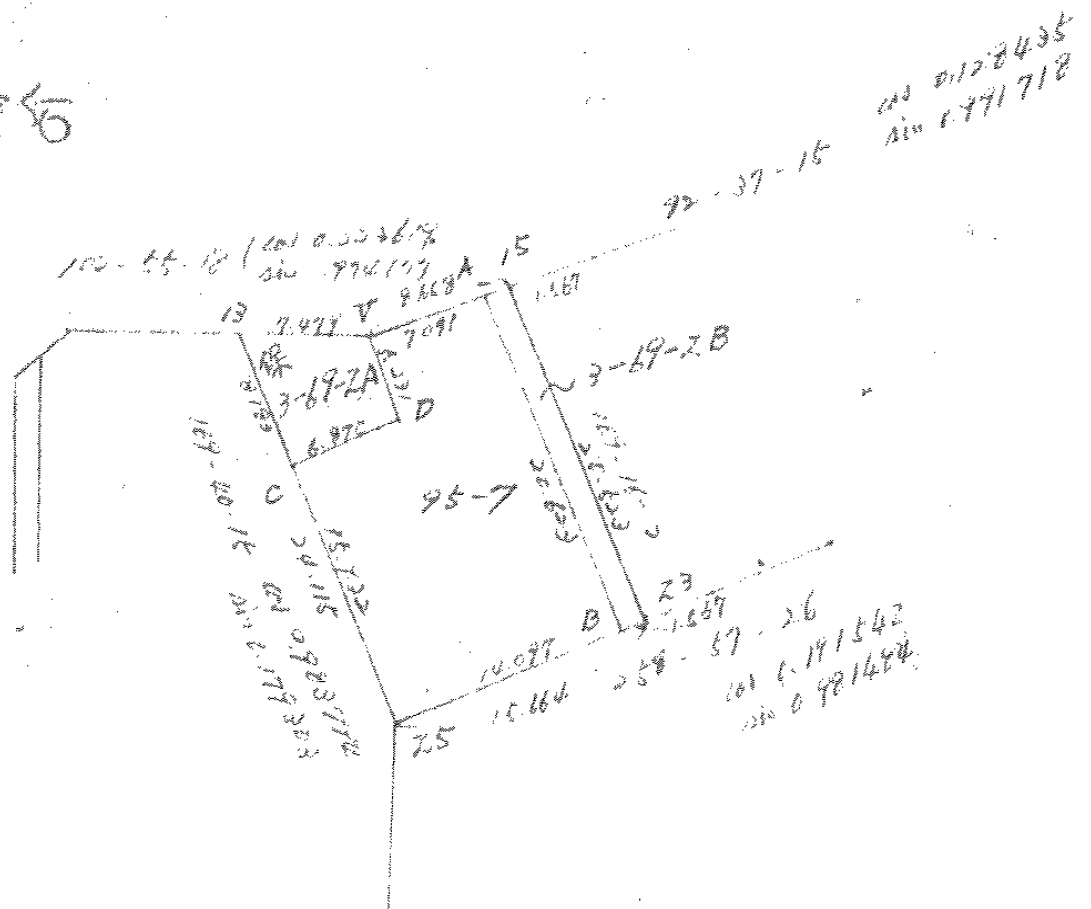
備考

新保
95-7

点	①	②	③	④	⑤	⑥	③ × ⑤		② × ⑥	
	X	X - (定数)	X _{n-1} - X _{n+1}	Y	Y - (定数)	Y _{n-1} - Y _{n+1}	+	-	+	-
V	-152.146.652	-152.100.000	- 6.056	-38.148.958	-38.100.000	- 5.908	296.489648		275.620016	
A	-152.145.765		+ 19.287	-38.142.108		- 10.690		816.347796	489.227850	
B	-152.166.039		+ 22.939	-38.138.268		+ 7.816		877.829652		648.238824
Z5	-152.148.704 -152.166.039		- 12.986	-38.151.924 -38.138.268		+ 16.509	674.285064			1134.234336
C	-152.153.053		- 16.883	-38.154.777		- 3.908	924.800091		207.231124	
D	-152.151.821		- 6.401	-38.148.016		- 5.819	307.350416		301.546399	
							2202.925219	1694.177448	1273.725389	1782.473160
							508747771		508747771	
									<u>5 = 254.3738855</u>	



变更后



面積計算書

正
誤
プロ
ック
計算
者
清
算
者
備
考
197

地 番 点	①	②	③	④	⑤	⑥	⑦	⑧	⑨	⑩
	X	X-(定数) (-166.000)	X _{n-1} -X _n	Y	Y-(定数) (-130.000)	Y _{n-1} -Y _n	+	-	+	-
T	146.652	6.652	+ 6.057	148.958	18.958	+ 6.094	114.828606		40.537288	
A	145.738	5.738	- 19.346	141.897	11.897	+ 10.870		230.791952	62.404670	
B	166.004	26.004	- 22.963	138.058	8.058	- 9.998		185.724744		259.987992
25	168.704	28.704	+ 12.968	151.924	21.924	- 16.693	284.441976			479.155872
C	153.030	13.030	+ 16.906	154.781	24.781	+ 3.904	418.947586		50.869120	
D	151.798	11.798	+ 6.378	148.020	18.020	+ 5.823	114.931560		68.699754	
							933.149728	416.516696	222.510832	739.143864
							516.633032	x 1/2		516.633032
								= 258.316516		

面積計算書

正
誤

プロ
ック

計
算
者

積
算
者

備
考

197

地 番	点	①	②	③	④	⑤	⑥	⑦	⑧	⑨	⑩	⑪	⑫
		X	X-(定数)	X _{n-1} -X _{n,1}	Y	Y-(定数)	Y _{n-1} -Y _{n,1}	+	-	+	-	+	-
		-1/2	1-152,140,000)		-38	(-38,140,000)							
保 A	D	144.980	4.980	+ 6.378	156.248	16.248	+ 5.823	103.629744				28.998540	
	T	146.652	6.652	- 6.818	148.958	8.958	+ 8.228		61.075644			54.732656	
	D	151.798	11.798	- 6.378	148.020	8.020	- 5.823		51.151560				68.699754
	C	153.030	13.030	+ 6.818	154.781	14.781	- 8.228	100.776858					107.210840
								204.406602	112.227204			83.731196	175.910594
								92.179398	x 1/2				92.179398
									= 46.089699				
									46.09				
保 B	A	145.738	5.738	+ 20.463	141.897	11.897	- 2.287	244.04173					129.667
	15	145.540	5.540	- 19.966	140.372	10.372	+ 5.347	243.388826					13.27732
	23	165.704	25.704	- 20.458	136.550	6.550	+ 2.314		05623	78304			
	B	165.998	25.998	+ 19.966	138.058	8.058	- 5.347		207.087352	29.622380			
								134.087265	58.785048				
								133.999900	59.479056				
								161.40085	09.205				79212
								160.886028					139.011306
								405.44258	340.06573				72178
								404.274854	341.087252				152.289038
								65.27685	341.08888				64.3537
								63.187602	x 1/2				63.187602
								64.3537					
									= 31.573801				32.17681
									32.17681				

面積計算書

工
区

フ
ロ
ック

計
算
者

精
算
者

備
考
197

地 番	点	①	②	③	④	⑤	⑥	×	⑦	⑧	×	⑨
		X	X-(定数)	X _{n-1} -X _{n,1}	Y	Y-(定数)	Y _{n-1} -Y _{n,1}		+	-		+
A		145.741	5.741 +	20.464	141.926	11.926 -	2.284					
保	15	145.540	5.540 -	19.963	140.372	10.372 +	5.376					207 05623
	23	165.704	25.704 -	20.464	136.550	6.550 +	2.284					134 02920
B.	B	166.004	26.004 +	19.963	138.088	8.088 -	5.376					
												405 51440
												341 09563
												64,41897
												1/2 32,209485
												32.21 m ²