

BLOCK NO. 75

街 区 計 算

街区略図

工区

3

ブロック

75

記入者



点検者



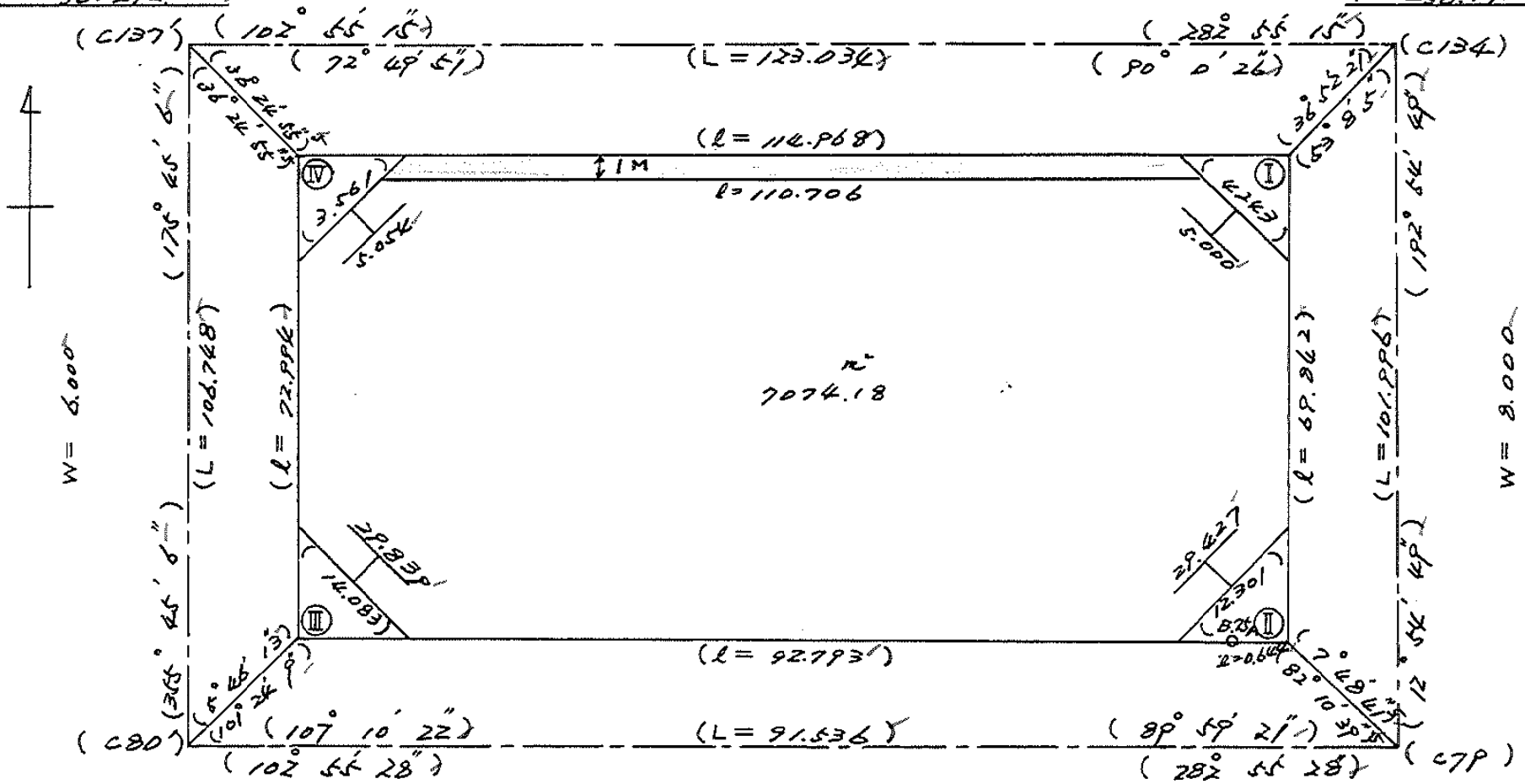
$X = -152.110.748$

$Y = -38.292.046$

$W = 6.000$

$X = -152.138.259$

$Y = -38.172.127$



$X = -152.217.203$

$Y = -38.284.138$

$W = 59.500$

8.75A $X = -152.208.129$
 $Y = -38.192.904$

$X = -152.227.676$

$Y = -38.194.921$

面積計算書

工
区

3

ブ
ロ
ック

75

計
算
者



精
算
者



備
考

全
体

点	①	②	③	④	⑤	⑥	③	×	⑤	②	×	⑥
	X	X-(定数)	X _{n-1} -X _{n+1}	Y	Y-(定数)	Y _{n-1} -Y _{n+1}	+		-	+		-
	-152	-152.100		-39.	-39.150							
I	140.289	40.289	+93.783	176.692	26.692	-96.449			2503.630968	2885.823761		
II	208.365	108.365	+67.840	192.304	42.304	+16.208			2869.902360			1756.379920
B75A	208.129	108.129	-20.990	197.904	42.904	+91.042	900.644960					9864.280618
III	187.375	87.375	-93.547	283.346	133.346	+95.849	12474.118262					8374.86375
IV	114.582	14.582	-47.086	298.753	138.753	-106.650	6523.223758			1555.170200		
							19907.996980	5372.524228	5461.004061	19975.466713		
							14594.662652					14534.662652
							x 1/2 = 7267.231326					
							7267.23	(4.49 + 37.86 + 26.57 + 4.29)	-109.84	-70.74.18		
								83.21				

西地計算

画地略図

工区

3

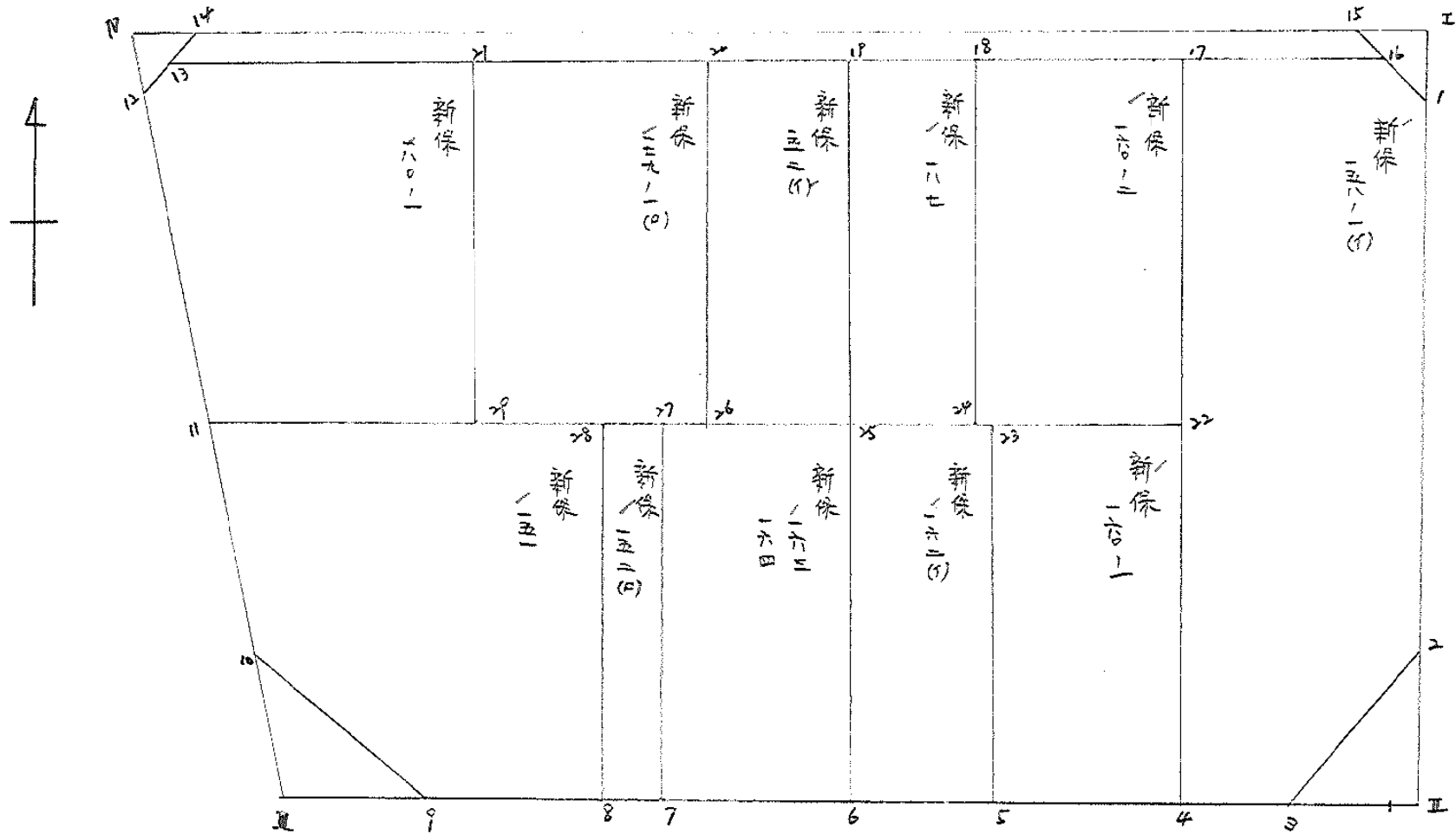
ブロック

75

記入者



点検者



面積計算書

工区 3

ブ
コ
ク

75

計
算
者



精
算
者



備
考

新保

158-1(1)
160-1

点	①	②	③	④	⑤	⑥	③	×	⑤	②	×	⑥
	X	X-(定数)	X _{n-1} -X _{n+1}	Y	Y-(定数)	Y _{n-1} -Y _{n+1}	+	-	+	-		
1	-152, 143.213,	152,100 43.213,	+ 59.020	-38, 177.366,	38,100 77.366,	+ 11.480			4566.141320			496.025240
2	199.836,	99.836,	+ 63.103	190.349,	90.349,	+ 23.439			5701.292947			2340.056504
3	206.316,	106.316,	+ 33.62	200.805,	100.805,	+ 24.043			338.906410			2556.155488
4	203.198,	103.198,	- 70.128	214.392,	114.392,	- 1.760	8022.082176			181.628480		
17	136.188,	36.188,	- 62.382	199.045,	99.045,	- 35.523	6178.625190			1225.506324		
16	140.816,	40.816,	+ 70.25	178.869,	78.869,	- 21.679			554.054725	884.850064		
									14200.707366	1160.385402	2251.984868	5392.296832
									3040.311964			3040.311964
												1/2 = 1520.155982
4	-152, 203.198,	152,100 103.198,	+ 28.645	-38, 214.392,	38,200 14.392,	+ 26.047			412.258840			2687.998306
5	198.950,	98.950,	37.146	232.906,	32.906,	+ 10.985	1222.326276					1086.965750
23	166.052,	66.052,	28.645	225.377,	25.377,	26.047	726.924165			1720.456444		
22	170.305,	70.305,	37.146	206.859,	6.859,	10.985			254.784444	772.300425		
									1949.250441	667.043254	2492.756869	3774.964056
									1282.207187			1282.207187
												1/2 = 641.1035935

面積計算書

工区

3

ブロック

75

計算者



精算者



備考

新保

162 (1)

163, 164

点	①	②	③	④	⑤	⑥	③	×	⑤	②	×	⑥
	X -152, 198.950	X-(定数) 152,100 98.950	X _{n-1} -X _{n+1} + 30.079	Y -38, 232.906	Y-(定数) 38,200 32.906	Y _{n-1} -Y _{n+1} + 19.813	+	-	+	-		
5	198.950	98.950	+ 30.079	232.906	32.906	+ 19.813			989.119574			1960.496350
6	196.131	96.131	- 35.718	245.190	45.190	+ 4.749	1614.076420					456.526119
25	163.232	63.232	- 30.079	237.655	37.655	- 17.813	1132.674745			1252.815616		
23	166.052	66.052	+ 35.718	225.377	25.377	- 4.749			706.415686	313.680748		
							2146.721165	1896.195260	1566.496564	2617.022469		
							850.525905			850.525905		
									1/2 = 475.2629525			
6	196.131	96.131	+ 29.252	245.190	45.190	+ 23.425			1321.897880			2231.868675
7	192.484	92.484	- 36.549	261.080	61.080	+ 8.356	2232.412920					772796304
27	159.582	59.582	- 29.252	253.546	53.546	- 23.425	1566.327572			1395.708350		
25	163.232	63.232	+ 36.549	237.655	37.655	- 8.356			1376.252595	528.366592		
							3198.740312	2698.150475	1924.074742	3021.664777		
							1100.590037			1100.590037		
									1/2 = 550.2950185			

面積計算書

工区 3

ブロック

75

計算者



精算者



備考

新保

152 (A)

151

点	①	②	③	④	⑤	⑥	③	×	⑤	②	×	⑥
	X	X-(定数)	X _{n-1} -X _{n+1}	Y	Y-(定数)	Y _{n-1} -Y _{n+1}	+	-	-	+	-	
7	-152, 192.484	152,100 92.484	+ 32.119	-38. 261.080	38,200 61.080	+ 10.947			1961.828620			1012.422248
8	191.701	91.701	- 33.686	264.493	64.493	- 4.123	2172.511188			378.083223		
28	158.798	58.798	- 32.119	256.957	56.957	- 10.947	1829.401883			643.661706		
27	159.582	59.582	+ 33.686	253.546	53.546	+ 4.123			1903.750556			245.656586
							4001.913081	3765.579076	1021.744929	1258.078934		
							236.334005					236.334005
										1/2 = 118.1670025		
8	-152, 191.701	152,100 91.701	+ 30.534	-38. 264.493	38,200 64.493	+ 17.261			1969.229262			1637.871461
9	189.332	89.332	- 13.052	274.818	74.818	+ 19.501	996.524536					1742.063332
10	178.649	78.649	- 37.196	283.994	83.994	+ 11.145	3124.240824					876.543105
11	152.136	52.136	- 19.841	285.963	85.963	- 27.037	1706.451513			1409.601032		
28	158.798	58.798	+ 39.565	256.957	56.957	- 21.470			2253.503705	1262.393060		
							5807.216873	4222.732967	2671.994092	4256.477998		
							1584.483906					1584.483906
										1/2 = 792.241953		

面積計算書

工区 3

ブロック

75

計測者



精算者



備考

新保 152 (1)
" 187

点	① X	② X-(定数)	③ X _{n-1} -X _{n+1}	④ Y	⑤ Y-(定数)	⑥ Y _{n-1} -Y _{n+1}	③ ×	⑤	② ×	⑥
							+	-	+	-
20	-152, 126,373	152,100 26.373-	31.356	-38, 241.830	38,200 41.830-	19.799	1311.621	480	422.149027 +102.182490	
19	129,123	29,123+	36.859	229,843	29,843-	4.175		1099.983137	121.882424	
25	163,232	63,232+	31.356	237,655	37,655+	19.799		1180.710180		1241.930368
26	160,479	60,479-	36.859	249,642	49,642+	4.175	1829.744478			242.499824
							3141.374948	2280.693317	643.747442	1504.430193
							860.682641			860.682641
									1/2 = 430.3413205	
19	-152, 129,123	152,100 29,123-	31.583	-38, 229,843	38,200 29,843-	18.824	942.531469		548.21362	
18	131,649	31,649+	36.632	218,831	18,831-	3.176		689.817192	100.517224	
24	165,755	65,755+	31.583	226,667	26,667+	18.824		842.223861		1237.772120
25	163,232	63,232-	36.632	237,655	37,655+	3.176	1379.377960			200.824832
							2321.909429	1532.041053	648.728476	1438.596942
							789.868376			789.868376
									1/2 = 394.934188	

面積計算書

工区

3

ブロック

75

計算者



精算者



備考

新保

160-2

点	①	②	③	④	⑤	⑥	③	×	⑤	②	×	⑥
	X	X-(定数)	X _{n-1} -X _{n+1}	Y	Y-(定数)	Y _{n-1} -Y _{n+1}	+		-	+		-
18	-152, 131.649	152,100 31.649	-	29.567	-38, 118.831	58,100 - 27.622	3413.476177			874.208678		
17	136,188	36,188	+	38.656	199,045	99,045	-	11.972	3828.693420	433.242736		
22	170,305	70,305	+	29.567	206,859	106,859	+	27.622	3159.400053			1941.964710
24	165,755	65,755	-	38.656	226,667	126,667	+	11.972	4896.439442			737.218860
									8409.915729	6988.183573	1307.451414	2729.183570
									1421.732156			1421.732156
												1/2 = 710.866078

面積計算書

工区

ω

ブロック

75

計算者



精算者



備考

水路

点	①	②	③	④	⑤	⑥	③ × ⑤		② × ⑥	
	X	X-(定数)	X _{n-1} -X _{n+1}	Y	Y-(定数)	Y _{n-1} -Y _{n+1}	+	-	+	-
	-152	-152.100		-38.	-38.150					
15	139.618	39.618	+25.563	179.620	29.620	-106.960		757.176060	4237.54/280	
16	140.916	40.816	-23.555	178.869	28.869	+107.152	180.009295			4373.546032
13	116.063	16.063	-25.563	226.772	126.772	+106.960	2496.302626			1718.098680
14	115.253	15.253	+23.555	225.829	135.829	-107.152		2199.652095	1624.389658	
							4176.311931	2956.628155	5271.930736	6091.616512
							219.683776			219.683776
							× 1/2 = 109.841888			

面積計算書

Ⅰ
区

3

ブロック

75

計算者



精算者





備考

隔切Ⅰ
Ⅱ

点	①	②	③	④	⑤	⑥	③ ×	⑤	② ×	⑥
	X	X-(定数)	X _{n-1} -X _{n+1}	Y	Y-(定数)	Y _{n-1} -Y _{n+1}	+	-	+	-
I	-152 140.289	-152.190 10.289	+3.595	-38 176.696	-38.170 6.696	-2.254		24.072120	23.191406	
1	143.213	13.213	-0.671	177.366	7.366	+2.926	4.942586			28.634812
15	139.618	9.618	-2.924	179.620	9.620	-0.670	28.129880		6.444060	
							23.071466	24.072120	29.635466	28.634812
							8.999966			8.999966
							x 1/2 = 4.499973			
Z	-152 199.836	-152.190 9.836	+2.049	-38 190.369	-38.190 0.369	-8.501		0.715101	83.615836	
Ⅱ	208.365	18.365	+8.293	192.306	2.306	+2.555		19.107072		46.922575
B75A	208.129	18.129	-2.049	192.904	2.904	+8.501	5.950296			154.114629
3	206.316	16.316	-8.293	200.805	10.805	-2.555	89.605285		41.687380	
							95.556161	19.922173	135.303216	201.037206
							75.733988			75.733988
							x 1/2 = 37.866994			

面積計算書

工区 3
 ブロック 75
 計算者 
 精算者 
 備考 脱切 III
 " IV

点	①	②	③	④	⑤	⑥	③ × ⑤		② × ⑥	
	X	X-(定数)	X _{n-1} -X _{n+1}	Y	Y-(定数)	Y _{n-1} -Y _{n+1}	+	-	+	-
9	-152 189.332	-152.170 19.332	+8.726	-38 274.918	-39.270 4.918	-8.648		42.041868	12.527136	
Ⅱ	187.375	17.375	-10.683	283.366	13.366	+9.176	142.575318			159.633000
10	179.649	8.649	+1.957	283.996	13.996	-8.528		27.386258	73.758672	
							142.575318	69.428126	86.285808	159.633000
							73.147192			73.147192
							× 1/2 = 36.573596			
12	-152 117.573	-152.110 7.573	-0.671	-38 288.531	-28.280 8.531	+2.924	5.724301			22.163452
Ⅲ	114.582	4.582	-2.320	288.753	8.753	-2.702	20.306960		12.380566	
14	115.253	5.253	+2.991	285.829	5.829	-0.222		17.434539	1.166166	
							26.031261	17.434539	12.546730	22.143452
							8.596722			8.596722
							× 1/2 = 4.298361			

計年
月
算日

計
算
者



檢
查
者



B.NO. 75

各筆面積計算書

地番	算式	隅切	地積	摘要
新保	158-1 (イ)		1520.15	
新保	160-1 (イ)		641.10	
新保	162 (イ)		425.26	
新保	163. 164		550.29	
新保	152 (イ)		118.16	
新保	151		792.24	
新保	180-1		861.05	
新保	179-1 (イ)		629.68	
新保	152 (イ)		430.34	
新保	187		394.93	
新保	160-2		710.86	
水路			109.84	
隅切 I		4.49		
隅切 II		37.86		
隅切 III		36.57		
隅切 IV		4.29		
		83.21		
計			7267.11	
全体			7267.23	
		差	0.12	