

岡山県南広域都市計画事業新岡山国道周辺
土地区画整理事業確定測量

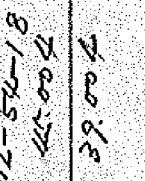
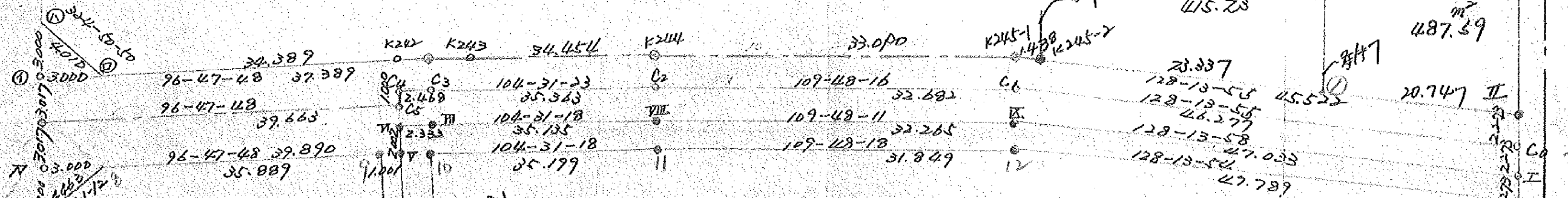
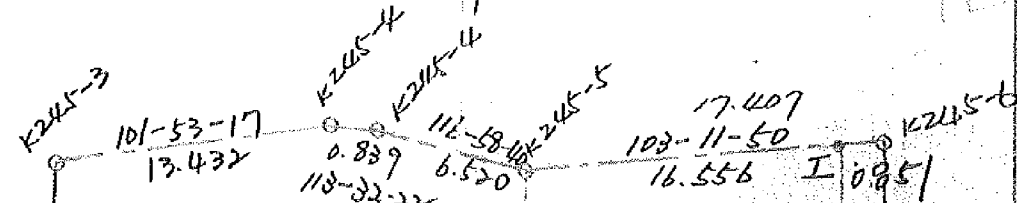
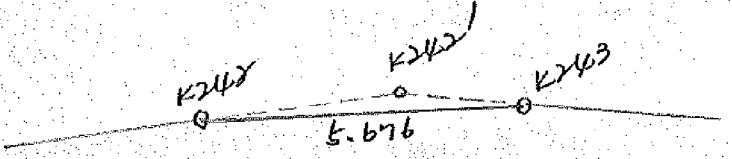
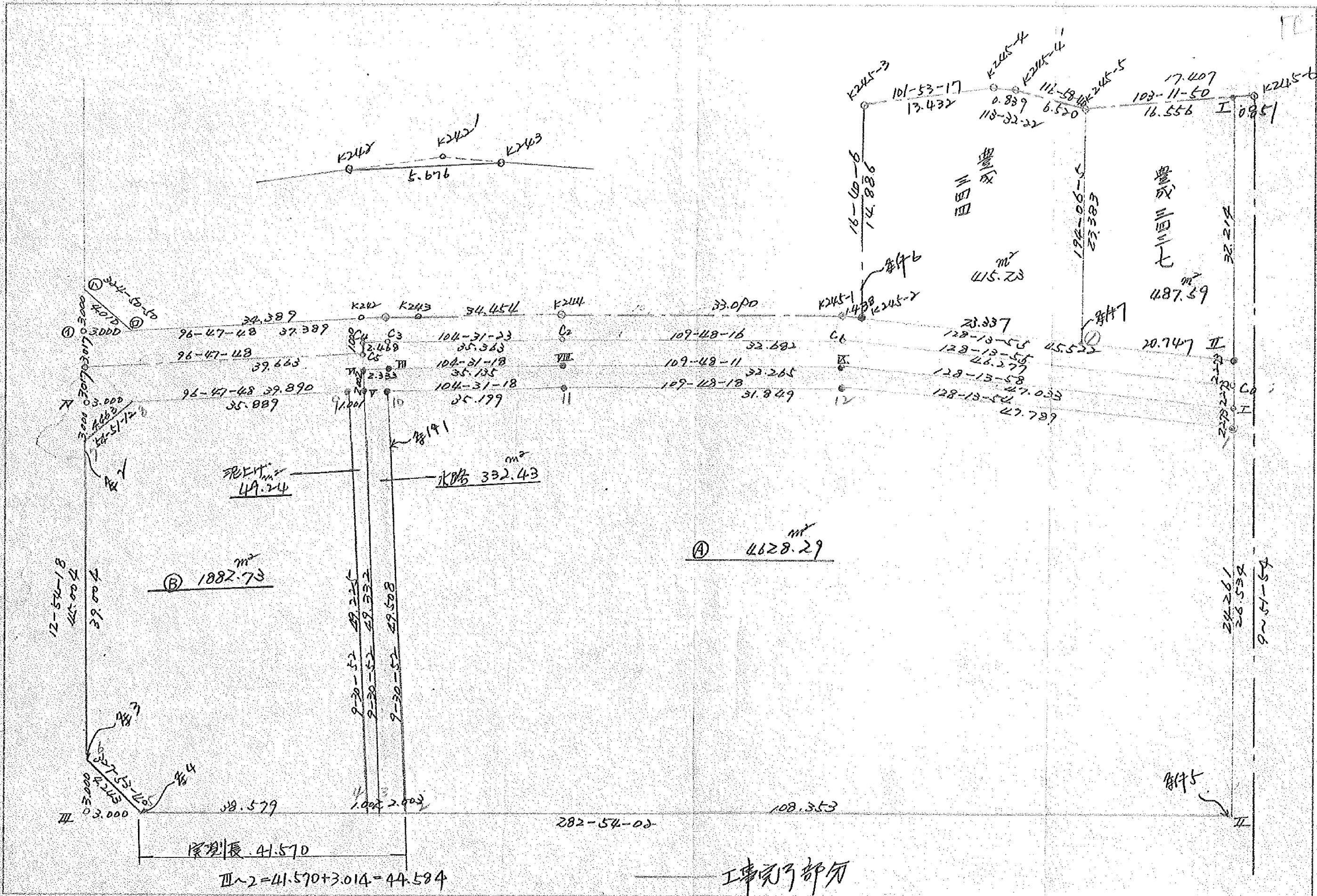
画地計算書

第三工区

3～4 ブロック

岡 山 市

以下の地番（換地処分時）は座標の資料なし
豊成2丁目9-101～103, 105～107, 111,
10-100～103, 107～109, 113, 115～117



② 1882.73 m²

30.4 m²
49.24

332.43 m²

① 4628.29 m²

原測長 41.570
III-2 = 41.570 + 3.014 = 44.584

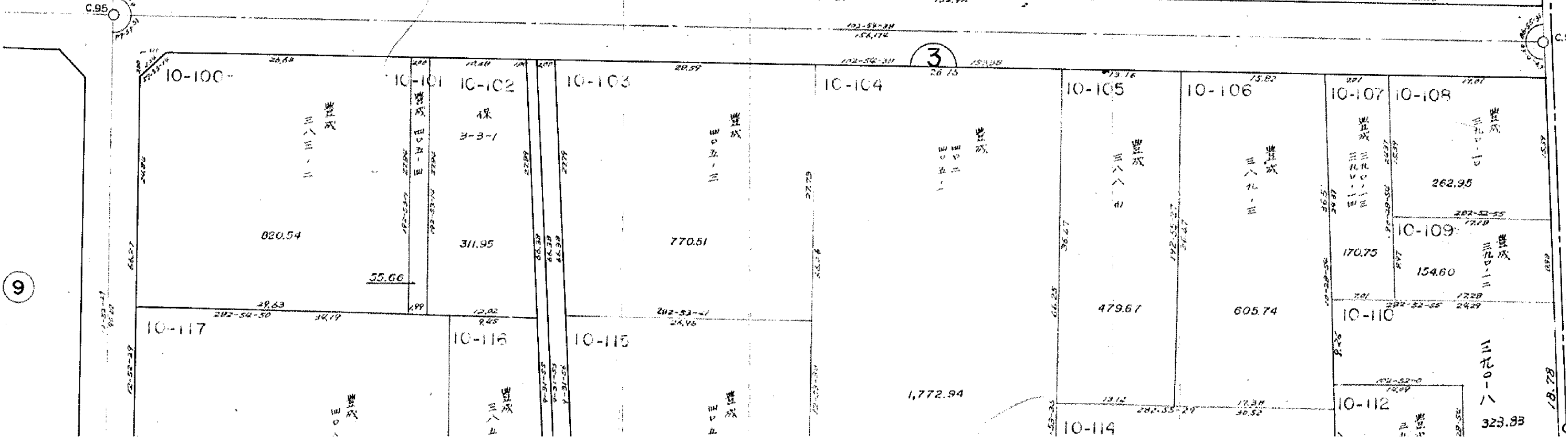
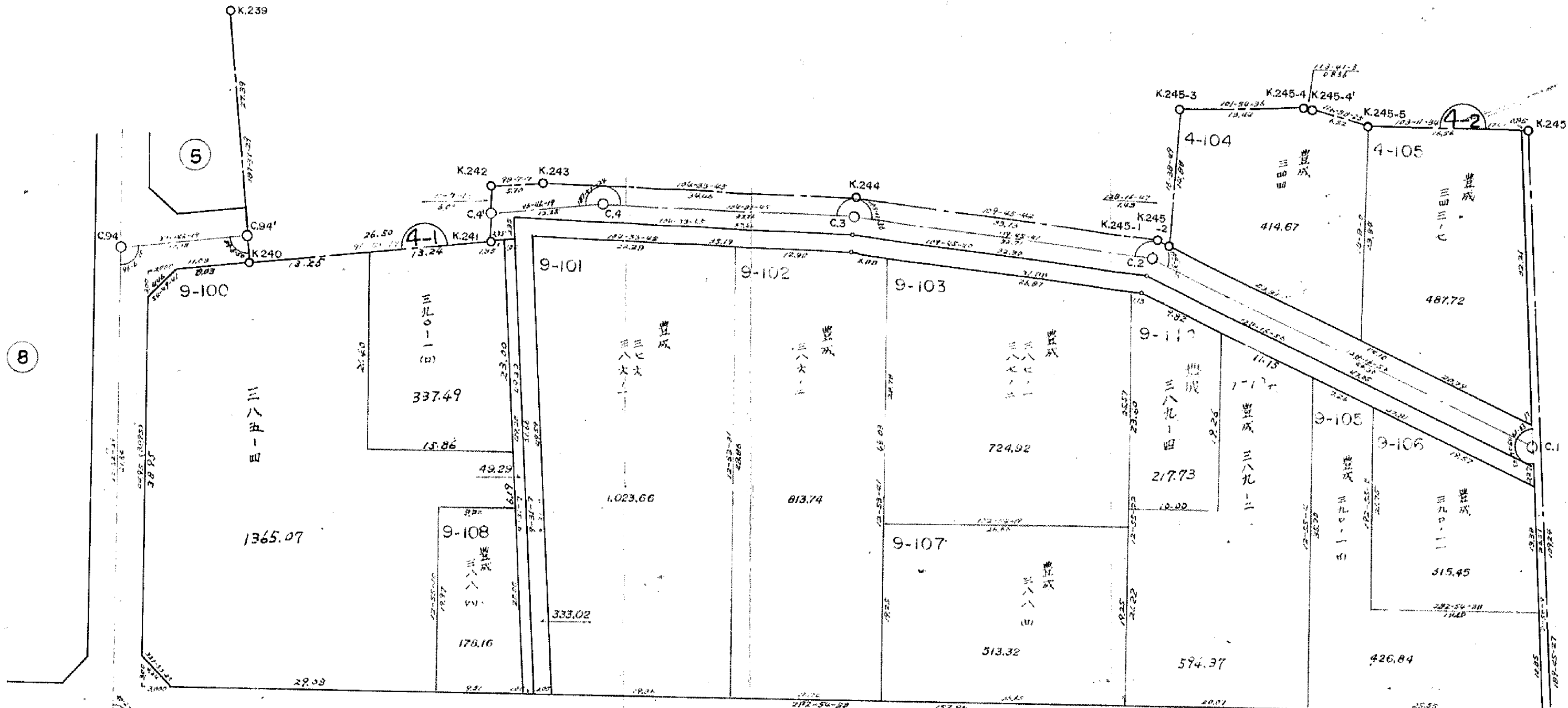
工事完了部分

豊成
三四三七
487.59 m²

豊成
三四三七
415.23 m²

24.261
26.552
9.51-54

計5



面積計算書

工
区

ブ
ロ
ック

計
算
者

精
算
者

備
考



点	①	②	③	④	⑤	⑥	③ × ⑤		② × ⑥	
	X	X - (定数)	X _{n-1} - X _{n+1}	Y	Y - (定数)	Y _{n-1} - Y _{n+1}	+	-	+	-
I	⁻¹⁵² 457.628	^{-152.400} 57.628	+55.244	³⁶ 694.969	^{-36.690} 4.969	-32.344			274.532281	1867.084572
II	483.770	83.770	-8.003	644.515	9.515	+153.623	76.148545			12868.448710
III	424.625	69.625	-78.012	848.542	158.592	+134.026	12372.079104			6899165250
IV	405.758	5.758	-39.146	838.541	108.541	-44.660	5814.785496			285442280
V	410.474	10.474	+2.746	798.932	108.932	-39.940		244.127272		448.531260
VI	408.504	8.504	-1.699	748.601	108.601	-2.648	184.543044			22.518542
VII	408.780	8.780	+9.086	796.284	106.284	-36.330		965.646424		318.477400
VIII	417.540	17.540	+19.741	762.271	72.271	-64.370		1426.701811		1132.268300
IX	428.521	28.521	+40.038	731.914	41.914	-67.302		1678.152722		1919.520342
									18447.526734	4644210520
									13803.316214	13803.316214
									X _{1/2} = 6901.658107	
				*	100	2350				
			6401.65 -	332.43 -	44.24 -	(4.50 + 4.48) -				6511.00

面積計算書

工区

ブロック

4-2

計算者

精算者

備考

豊成 243-7
豊成 244

点	①	②	③	④	⑤	⑥	③ × ⑤		② × ⑥			
	X	X - (定数)	X _{n-1} - X _{n+1}	Y	Y - (定数)	Y _{n-1} - Y _{n+1}	+	-	+	-		
I	⁻¹⁵² 421.411	^{-152.410} 11.277	+35.518	^{-36.} 688.671	^{-36.680} 8.671	-10.600			207.976578	120.956600		
II	453.14P	43.14P	+18.8PP	6P4.1P0	14.1P0	+21.816			268.176810	941.338534		
I	440.310	30.310	-35.518	710.487	30.487	+10.600	1082.837266			721.286000		
K245-5	417.621	7.621	-18.8PP	704.7P0	24.7P0	-21.816	468.506210		166.4778P6			
							分筆後の座標なし		1551.343476	576.15338P	287.4344P6	1262.62458P
							175.1P008P				175.1P008P	
							× 1/2 = 487.5P5044					
K245-5	⁻¹⁵² 417.631	^{-152.410} 7.631	+25.637	704.7P0	4.7P0	-0.114			122.301230	0.84PP24		
I	440.310	30.310	+8.237	710.487	10.487	+23.PP3			86.38141P	727.227830		
K245-2	425.868	15.868	-28.73P	728.783	28.783	+14.027	827.1P4637			222.520436		
K245-3	411.571	1.571	-11.530	724.514	24.514	-17.413	282.646420		27.355223			
K245-4	414.338	4.338	+3.102	711.370	11.370	-13.1P2			35.26P740	60.2545P4		
K245-4'	414.673	4.673	+3.2P3	710.601	10.601	-6.580			34.10P0P3	30.748340		
							110P.841057	27P.361482	11P.2286P1	11P.908266		
							変更後の資料なし		830.471575		830.471575	
							× 1/2 = 415.23P7825					

面積計算書

工区 三工区
 区 野谷白変更

計算者

検算者

備考

6.000道路部分

点	①	②	③	④	⑤	⑥	③	×	⑤	②	×	⑥
	X	X-(定数)	X _{n-1} -X _{n+1}	Y	Y-(定数)	Y _{n-1} -Y _{n+1}	+		-	+		-
	152,	-152,390		-36,	-36,820							
K740	407.051	17.051 +	4.996	827.575	7.575 +	8.778			37.844700			149.673678
8	406.113	16.113 +	11.631	835.562	15.562 +	11.636			25.381622			187.490868
7	408.682	18.682 -	9.161	839.211	19.211 +	0.961	175.991971					17.953402
㊶	396.952	6.952 -	8.451	836.523	16.523 -	4.997	139.635873			34.739144		
㊷	400.231	10.231 +	4.165	834.214	14.214 -	9.739			59.201310	99.639709		
B	401.117	11.117 +	6.820	826.784	6.784 -	6.639			46.266880	73.805763		
									315.629844	168.694512	208.184616	355.117948
									146.933332			146.933332
									1/2 = 73.466666			

面積計算書

工
区

ブ
ロ
ック

計
算
者

精
算
者

備
考

道路面積

点	①	②	③	④	⑤	⑥	③ × ⑤		② × ⑥	
	X	X-(定数)	X _{n-1} -X _{n+1}	Y	Y-(定数)	Y _{n-1} -Y _{n+1}	+	-	+	-
B.No. II	-152	-152,300-		-36	-36,600-					
B.No. I	453.14P	153.149	+ 32.650-	644.1P0	94.190-	- 34.979			3075	303500
II	457.628	157.628-	- 24.628-	694.969	94.969-	+ 37.724	2338.896532-			5946.358672-
III	428.521	128.521-	- 40.038-	731.914	131.914-	+ 67.302-	5281.572732-			8649.720342-
IV	417.590	117.590-	- 19.744-	762.271	162.271-	+ 64.370	3203.39184-			7569.268300-
V	408.780	108.780-	- 9.086-	796.284	196.284-	+ 36.390	1783.436424-			3951.977400-
VI	408.504	108.504-	+ 1.699-	798.601	198.601-	+ 2.648-		337.423099		287.318592-
VII	410.47P	110.479-	- 2.746-	798.932	198.932-	+ 39.940-	546.267272-			4412.531260-
VIII	405.758	105.758-	- 13.527-	838.541	238.541-	+ 37.591-	3226.744107-			3975.549978-
①	396.952	96.952-	- 5.527-	836.523	236.523-	- 4.327-	1307.262621-			419.511304-
②	400.231	100.231-	+ 7.349-	834.214	234.214-	- 36.456-		1721.238686	3654.021396-	
K242	404.301	104.301	+ 4.892-	800.067	200.067-	- 39.763-		978.727764	4147.320663-	
K243	405.123	105.123	+ 9.463-	794.451	194.451-	- 38.978-		1840.089813	4097.484294-	
K244	413.764	113.764	+ 19.855-	761.08P	161.089	- 64.503-		3198.422095	7339.49292-	
K245-1	424.978	124.978	+ 39.385-	729.948	129.948-	- 66.899-		5118.001990	8369.903222-	
								17687.571499	16269.206937-	23374.358982
									34797.723544-	
								1418.364562		1418.364562-
								x 1/2 = 709.182281-		

面積計算書

工
区

フ
ロ
ン
ク

計
算
者

精
算
者

備
考

所在地
A

点	①	②	③	④	⑤	⑥	③	×	⑤	②	×	⑥						
	X	X-(定数)	X _{n-1} -X _{n+1}	Y	Y-(定数)	Y _{n-1} -Y _{n+1}	+		-	+		-						
I	454.867	49.867	+53.447	695.358	5.358	-33.382				286529766	1664.660	194						
II	483.770	73.770	-0.288	699.515	9.515	+109.775	2.740	320				888.101	750					
B	454.579	49.579	-73.094	805.133	115.133	+97.422	8415.531	502					4830.085	338				
10	410.676	0.676	-40.977	796.937	106.937	-42.271	4285.714	149			28.575	196						
11	414.502	9.502	+19.617	762.862	72.862	-64.040			1429.333	854	608.508	080						
12	430.293	20.293	+40.365	732.877	42.897	-67.504			1731.537	445	1369.858	672						
										12703.985	971	3447.401	025	3671.602	142	12928	1870	888
										9,256,584	946					9,256,584	946	
										$\times \frac{1}{2} = 4,628,292.928$								

面積計算書

工
区

ブ
ロ
ック

計
算
者

縮
算
者

備
考

宅地
⑬

点	①	②	③	④	⑤	⑥	③ × ⑤		② × ⑥	
	X	X - (定数)	X _{n-1} - X _{n+1}	Y	Y - (定数)	Y _{n-1} - Y _{n+1}	+	-	+	-
9	⁻¹⁵² 410.360	^{-152.400} 10.360	+ 52.795	⁻³⁶ 711.925	^{-36.790} 7.925	- 27.500			523.990375	284.900000
4	458.908	58.908	+ 37.935	808.062	18.062	+ 45.742			721.305770	2694.569736
5	450.295	50.295	- 12.207	845.667	55.667	+ 39.860	679.527067			2004.752700
6	446.701	46.701	- 41.613	847.922	57.922	- 6.456	240.308186			301.501656
7	408.682	8.682	- 40.588	839.211	49.211	- 12.360	1997.376068			107.309520
8	406.113	6.113	+ 1.678	835.562	45.562	- 39.226		76.453036	240.155318	
							5087.211323	1321.749381	933.866494	4699.328436
							3765.461942			3765.461942
										1/2 = 1882.730971

座標に依る面積計算書(90)

面積計算書

豊成389-4

地番	点	X	1		2		3		4		1 × 4		2 × 3	
			$X_2 - X_1$	$X_2 - X_1$	Y	$Y_2 + Y_1$	$Y_2 - Y_1$	+	-	+	-			
3 8 9 7 4	19	429.884	882.777	23.009	733.196	1473.112	5.280	4661.06256					33894.83408	
	A	452.893	908.022	2.226	739.196	1468.443	-9.949			9033.910878			3283.438548	
	B	455.129	891.479	-18.779	729.247	1454.392	-4.102			3656.846858				27312027368
	C	436.250	866.616	-6.084	725.145	1459.998	7.708	6679.826128						2870.459872
	II	430.266	860.150	-0.382	732.853	1466.769	1.063	914.23945						560.205758
	19	429.884			733.196									
										1255.228138				
										12690.757736				
										435.479598				
										1/2 217.739789				
													27178.272556	
														3674.2792958
													435.479598	
										1/2 217.739789				
													1/2 217.739789	
														217.73m²
														× 0.3025

座標に依る面積計算書(401)

面積計算書

豊成389-2

地番	点	1		2		3		4		1 × 4		2 × 3	
		X	$X_2 + X_1$	$X_2 - X_1$	Y	$Y_2 + Y_1$	$Y_2 - Y_1$	+	-	+	-		
389	A	452.890	926.469	20.683	739.196	1483.137	4.745	4396.085605			20675.722571		
	B	472.576	951.638	4.486	743.941	1468.210	-19.569		18622.604022		6586.852118		
	C	478.062	921.322	-34.802	724.372	1440.1762	-7.982		7253.992204			50141.299124	
	D	443.260	879.610	-6.910	716.390	1441.535	8.255	7700.98555				2961.00685	
	E	436.350	891.479	18.279	725.145	1454.392	4.102	2656.846858			27212.027368		
2	B	455.129	908.022	-2.226	729.247	1468.443	9.949	9030.910878				2283.438548	
	A	452.890			739.196								
								24287.838691					
								25976.596226					
								1188.257575					
								1/2 594.2787625					
								64574.602057					
									63285.844622				
									1188.257575				
									1/2 594.2787625				
									1/2 594.37 m ²				
									× 0.3025				

面積計算書

工
区

フ
ロ
ック

計
算
者

精
算
者

備
考

陽切 III IV

点	①	②	③	④	⑤	⑥	③ × ⑤		② × ⑥	
	X	X-(定数)	X _{n-1} -X _{n+1}	Y	Y-(定数)	Y _{n-1} -Y _{n+1}	+	-	+	-
5	⁻¹⁵² 450.295	^{152.440} 10.295	+2.924	⁻³⁶ 845.667	^{36.840} 5.667	+0.670				6.897650
III	449.625	9.625	-3.594	848.592	8.592	+2.255	30.879648			21.704375
b	446.701	6.701	+0.670	847.922	7.922	-2.925		5.307740	19.600425	
							30.879648	21.878048	19.600425	28.602025
							9.001600			9.001600
								$\times \frac{1}{2} = 4.500800$		
7	⁻¹⁵² 408.682	^{152.440} 8.682	-0.355	⁻³⁶ 839.211	^{36.830} 9.211	+2.979	3.259905			25.853678
IV	405.758	5.758	-2.569	838.541	8.541	-3.649	21.941829			21.010942
8	406.113	6.113	+2.924	835.562	5.562	+0.670		16.263288		4.095710
							25.211734	16.263288	21.010942	29.959388
							8.948446			8.948446
								$\times \frac{1}{2} = 4.479223$		

面積計算書

工
区

フ
ロ
ック

計
算
者

結
算
者

備
考

泥工

点	①	②	③	④	⑤	⑥	③ × ⑤		② × ⑥	
	X	X-(定数)	X _{n-1} -X _{n+1}	Y	Y-(定数)	Y _{n-1} -Y _{n+1}	+	-	+	-
	-152	152.410		-36	36.790					
T	410.479	-0.479	+48.772	798.932	-8.932	+7.161			435.631504	3.430119
W	454.132	-49.132	+48.429	807.086	-17.086	+9.130			827.457894	449.575160
4	458.908	-48.908	-48.772	808.062	-18.062	-7.161	880.919864		350.230188	
9	410.360	-0.360	-48.429	799.925	-9.925	-9.130	480.657825		3.286800	
							1361.577689		1263.089398	353.516988
							98.488291			98.488291
							1/2 = 49.2441455			

面積計算書

工区

ブロック

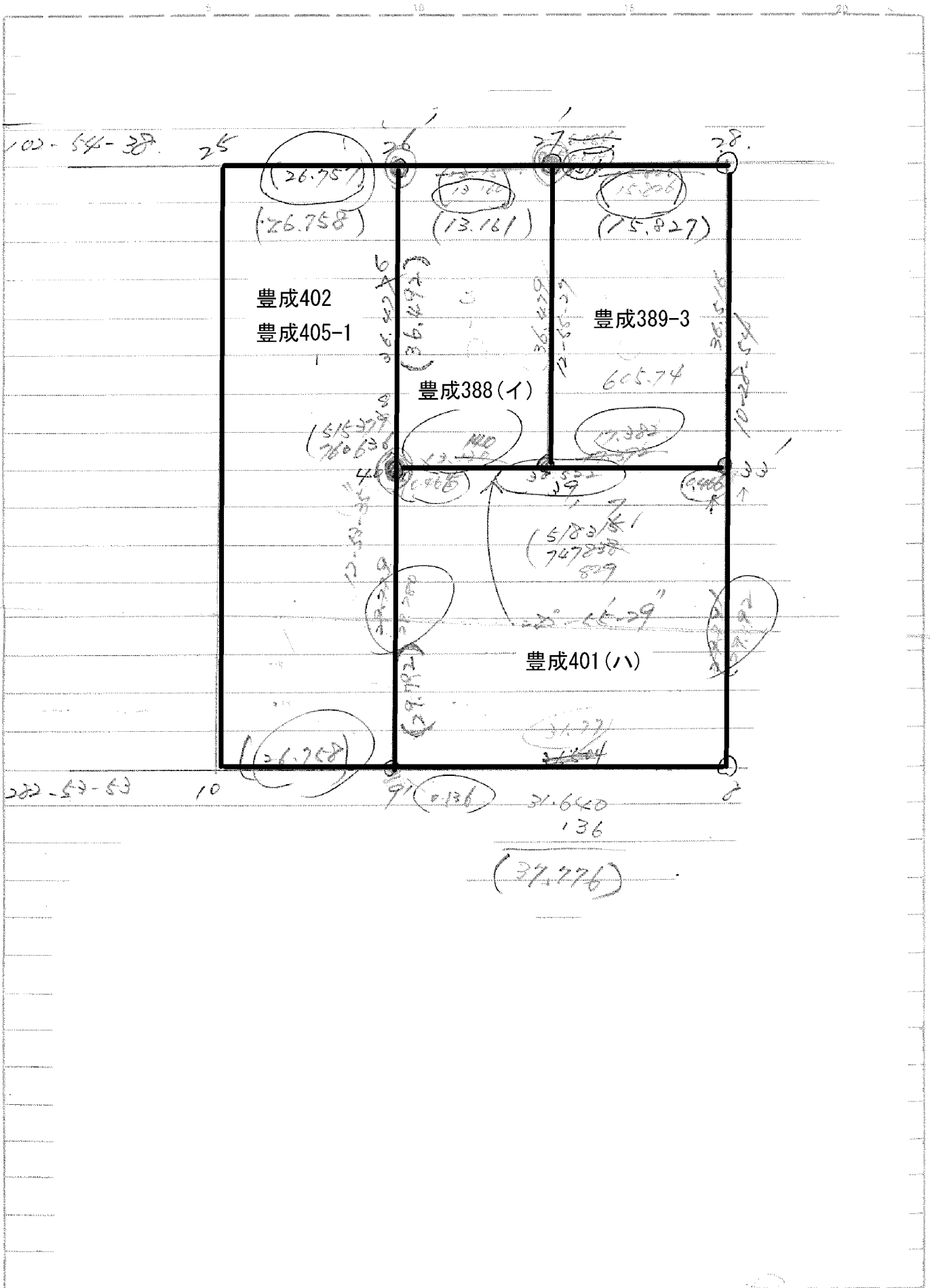
計算者

精算者

備考

木路

点	①	②	③	④	⑤	⑥	③ × ⑤		② × ⑥		
	X	X-(定数)	X _{n-1} -X _{n+1}	Y	Y-(定数)	Y _{n-1} -Y _{n+1}	+	-	+	-	
I	⁻¹⁵² 457.628	⁻¹⁵² 47.628	+ 31.346	⁻³⁶ 694.969	⁻³⁶ 4.969	- 36.656					
1	459.867	49.867	- 27.335	695.258	5.358	+ 37.928	146.460930			2270.635576	
12	430.293	30.293	- 40.365	732.897	42.897	+ 67.504	1731.537405			2044.898672	
11	419.502	19.502	- 19.617	762.862	72.862	+ 64.040	1429.333854			1248.908080	
10	410.676	10.676	+ 46.077	796.937	106.937	+ 42.271		4285.714149		451.285196	
2	459.579	49.579	+ 48.456	805.133	115.133	+ 10.149		3578.284648		604.667271	
3	459.132	49.132	- 51.075	807.086	117.086	- 6.532	4990.167450		386.250224		
VI	408.504	8.504	- 50.352	798.601	108.601	- 10.802	4468.277552		91.860208		
VII	408.780	8.780	+ 9.086	796.284	106.284	- 36.330		765.696424	318.977400		
VIII	417.590	17.590	+ 19.741	762.271	72.271	- 64.370		1426.701811	1132.268300		
IX	428.521	28.521	+ 40.038	731.914	41.914	- 67.302		1628.152732	1919.520342		
								14755.777191	14090.908038	5955.525642	6620.994795
								664.869153		664.869153	
										1/2 = 332.4345765	



面積計算書

工区

2

ブロック

3

計算者

精算者

備考

豊成 401 (1)

豊成389-3

点	①	②	③	④	⑤	⑥	③ × ⑤		② × ⑥	
	X	X - (定数)	X _{n-1} - X _{n+1}	Y	Y - (定数)	Y _{n-1} - Y _{n+1}	+	-	+	-
40	515.378	- 5.378	- 22.202	760.626	- 20.626	- 36.324	680.180472			1.16.724324
33	522.205	- 12.205	+ 36.122	720.287	- 0.287	- 24.324		22.020214		2.16.935445
8	551.500	- 41.500	+ 22.202	726.307	- 6.307	+ 36.324		140.022014		1.10.351000
9	544.407	- 34.407	- 36.122	767.281	- 37.281	+ 24.324	1246.664282			827.037703
							2026.844741	122.068228	42.662377	2347.438108
							244.776516			1854.776516
							Σ = 927.388262			
27	482.762	- 2.762	- 32.019	729.670	- 19.670		109.81372			
28	486.298	- 1.298	+ 39.443	724.244	- 4.244			167.29669		
33	522.205	- 12.205	+ 32.019	720.287	- 10.287			248.59025		
37	528.217	- 28.217	- 39.443	747.829	- 27.829		1097.6592			
							1727.4729	515.98694		
							1211.486			
							Σ = 605.742			

面積計算書

工区

3

プロック

3

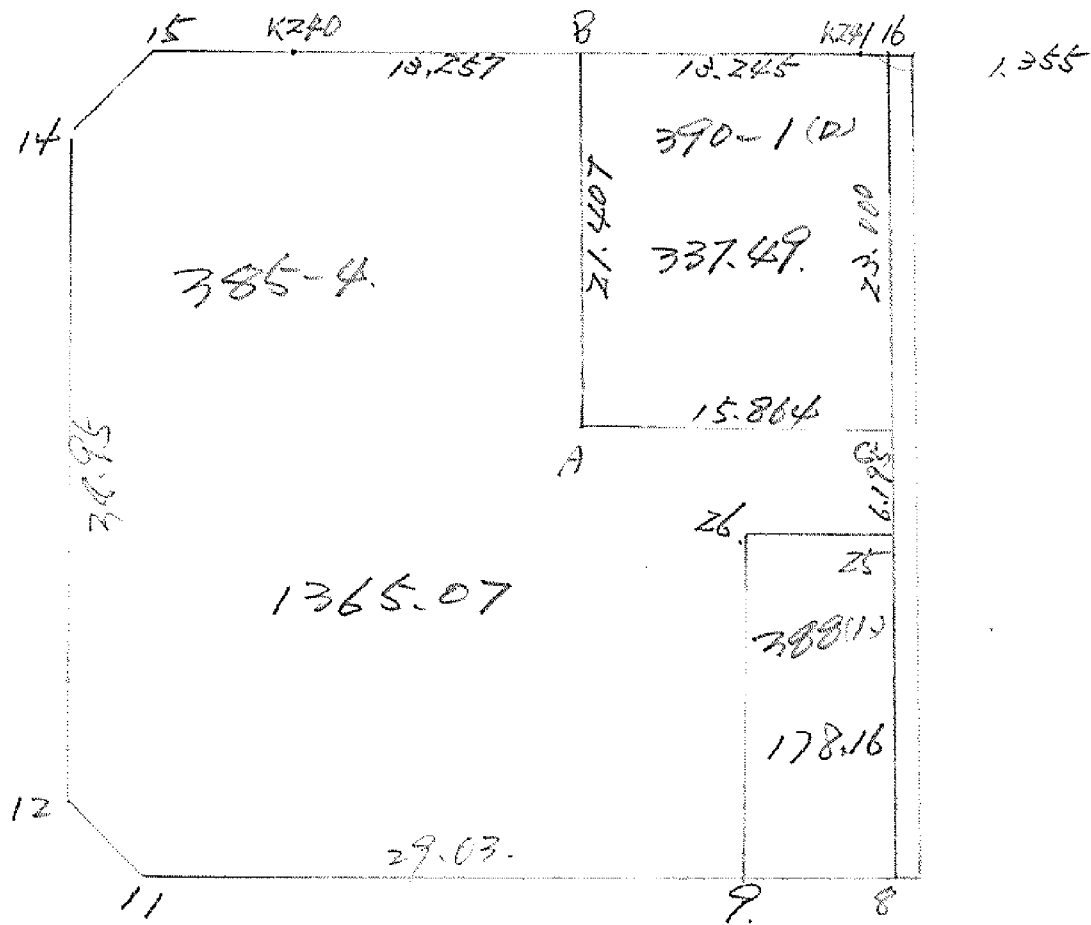
計算者

精算者

備考

豊成 388 (1)
" 402 405-1

点	①	②	③	④	⑤	⑥	③ × ⑤		② × ⑥	
	X	X - (定数)	X _{n-1} - X _{n+1}	Y	Y - (定数)	Y _{n-1} - Y _{n+1}	+	-	+	-
26'	-479.821	9.821	- 32.616	-752.497	22.497	- 20.966	733.762152		205.907086	
27'	-482.762	12.762	+ 38.496	-739.670	9.670	- 4.668		372.256632	59.573016	
39'	-518.317	48.317	+ 32.616	-747.829	17.829	+ 20.966		581.510664		1013.014222
40'	-515.378	45.378	- 38.496	-760.636	30.636	+ 4.668	1179.363456			211.824504
							1913.125608	953.766984	265.680102	1224.838726
							959.358624			959.358624
								1/2 479.679312		
25	-473.843	3.843	- 58.613	-778.578	28.578	- 40.867	1675.042314		157.051881	
26'	-479.821	9.821	+ 70.564	-752.497	2.497	- 11.297		176.188308	110.947837	
9'	-544.407	74.407	+ 58.613	-767.281	17.281	+ 40.867		1012.891253		3040.790869
10	-538.434	68.434	- 70.564	-793.364	43.364	+ 11.297	3059.937296			773.098298
							4734.979610	1189.089461	267.999718	3813.889767
							3525.890049			3545.890049
								1/2 = 1772.9460245		

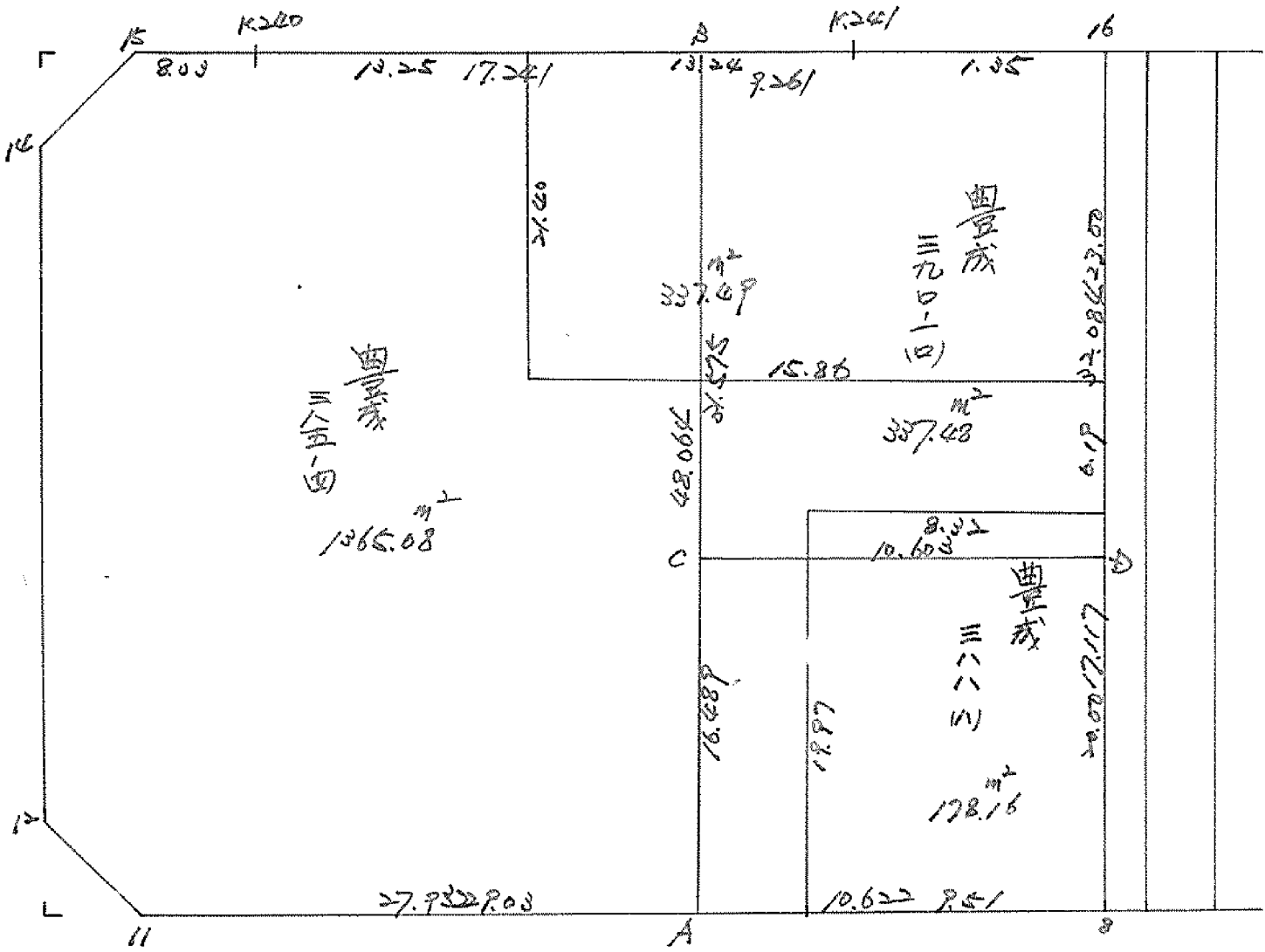
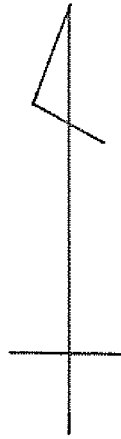


面積計算書

豊成385-4

点	①			②			③			④			⑤			⑥		
	X	X-(定数)	X _{n-1} -X _{n+1}	Y	Y-(定数)	Y _{n-1} -Y _{n+1}	+	×	-	+	×	-	+	×	-			
14	408.695	-8.695	-40.546	839.205	-39.205		1587.605930											
15	406.125	-6.125	1.623	835.558	-35.558		57.710634											
K240	407.072	-7.072	2.510	827.577	-27.577										69.218270			
B	408.635	-8.635	22.432	814.413	-14.413										323.312416			
A	429.504	-29.504	24.404	819.183	-19.183										468.141932			
C	433.039	-33.039	9.645	803.718	-3.718										35.860110			
25	439.149	-39.149	4.250	804.743	-4.743										20.157750			
26	437.289	-37.289	17.605	812.860	-12.860										226.400300			
9	456.754	-56.754	12.977	817.325	-17.325										224.826525			
11	450.266	-50.266	10.083	845.630	-45.630										460.087290			
12	446.671	-46.671	41.571	847.886	-47.886										1990.668906			
棟															4098.072710			
															1367.917310			
															2730.155447			
															1365.0777385			
															1365.08 m ²			

33区 4-1ブロック



面積計算書

工
区

W

ブ
ロ
ック

4-1

計
算
者

精
算
書

備
考

量成 W80-1 (12)
量成 W88 (11)

点	(1)	(2)	(3)	(4)	(5)	(6)	(7)	(8)	(9)	(10)
	X	X - (定数)	X _{n-1} - X _{n+1}	Y	Y - (定数)	Y _{n-1} - Y _{n+1}	+	-	+	-
B	409.105	9.105	-30.048	810.656	20.656	-14.617	614.661838		101.266785	
K241	410.197	10.197	+1.252	801.260	11.260	-10.561		14.097520	107.686577	
16	410.357	10.357	+31.802	799.915	9.915	+3.960		315.316820		41.013720
D	441.999	41.999	+29.888	805.220	15.220	+15.762		654.895260		661.988238
C	440.245	40.245	-32.894	815.677	25.677	+5.236	804.619238			210.722820
							1059.28126	784.309710	238.753262	712.724778
							674.971416			674.971416
									1/2 = 207.485708	
C	440.245	0.245	-14.508	815.677	15.677	-13.184	227.441916			3.230080
D	441.999	1.999	+18.635	805.220	5.220	-7.626		97.274700	15.204274	
B	458.880	18.880	+14.508	808.051	8.051	+12.184		116.803908		248.913920
A	455.507	16.507	-18.635	818.404	18.404	+7.626	242.958560			125.882382
							570.600456	214.078608	18.674454	274.796202
							256.321848			256.321848
									1/2 = 178.160924	

豊成

