

BLOCK NO. 6

街区計算

街区略図

工区

3

ブロック 6

記入者

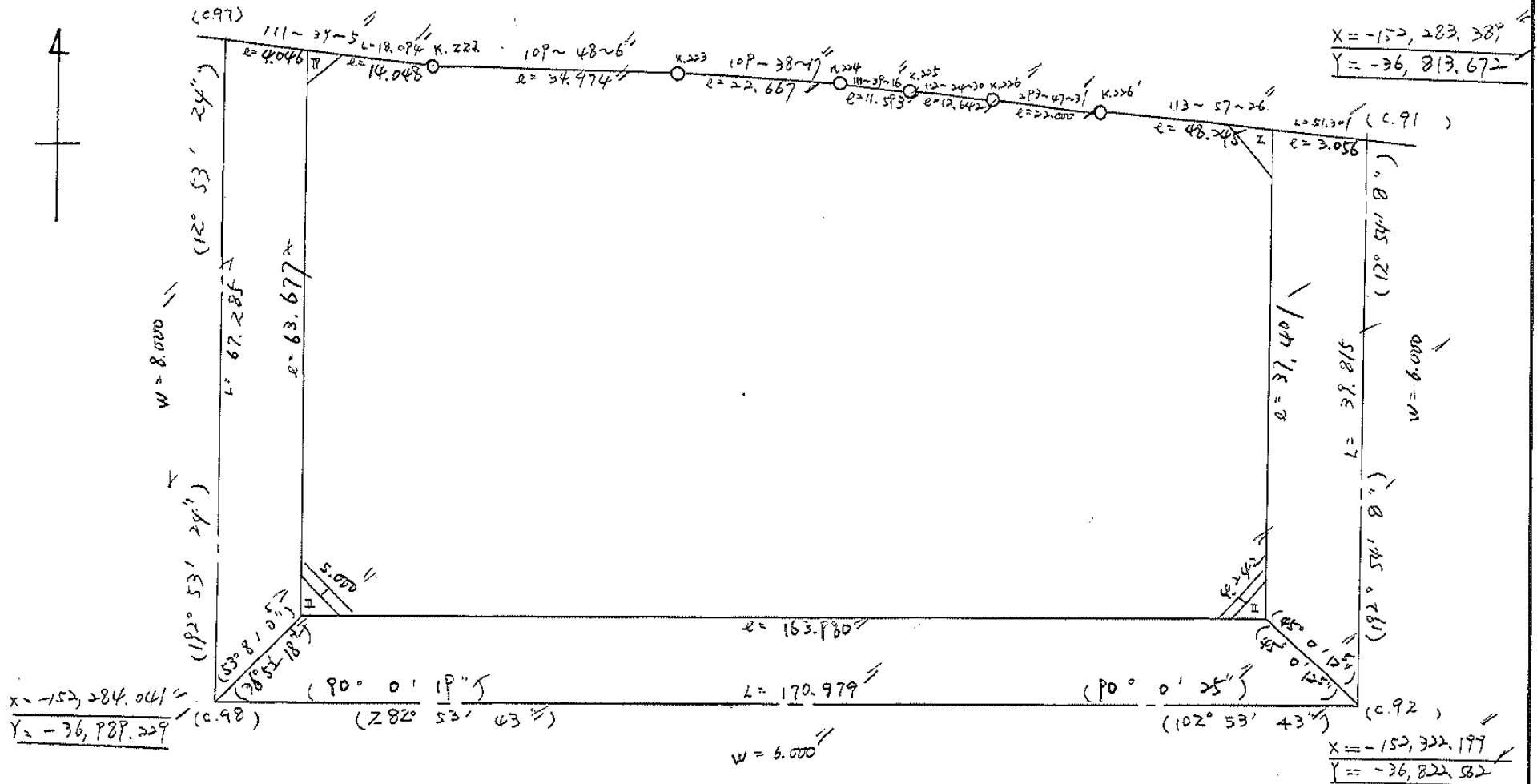
点検者

$$X = -152, 218.444$$

$$Y = -36, 974.217$$

$$X = -152, 282.389$$

$$Y = -36, 813.672$$



$$X = -152, 284.041$$

$$Y = -36, 989.229$$

$$X = -152, 322.199$$

$$Y = -36, 822.532$$

面積計算書

工区

3

ブロック

6

計算者



縮算者



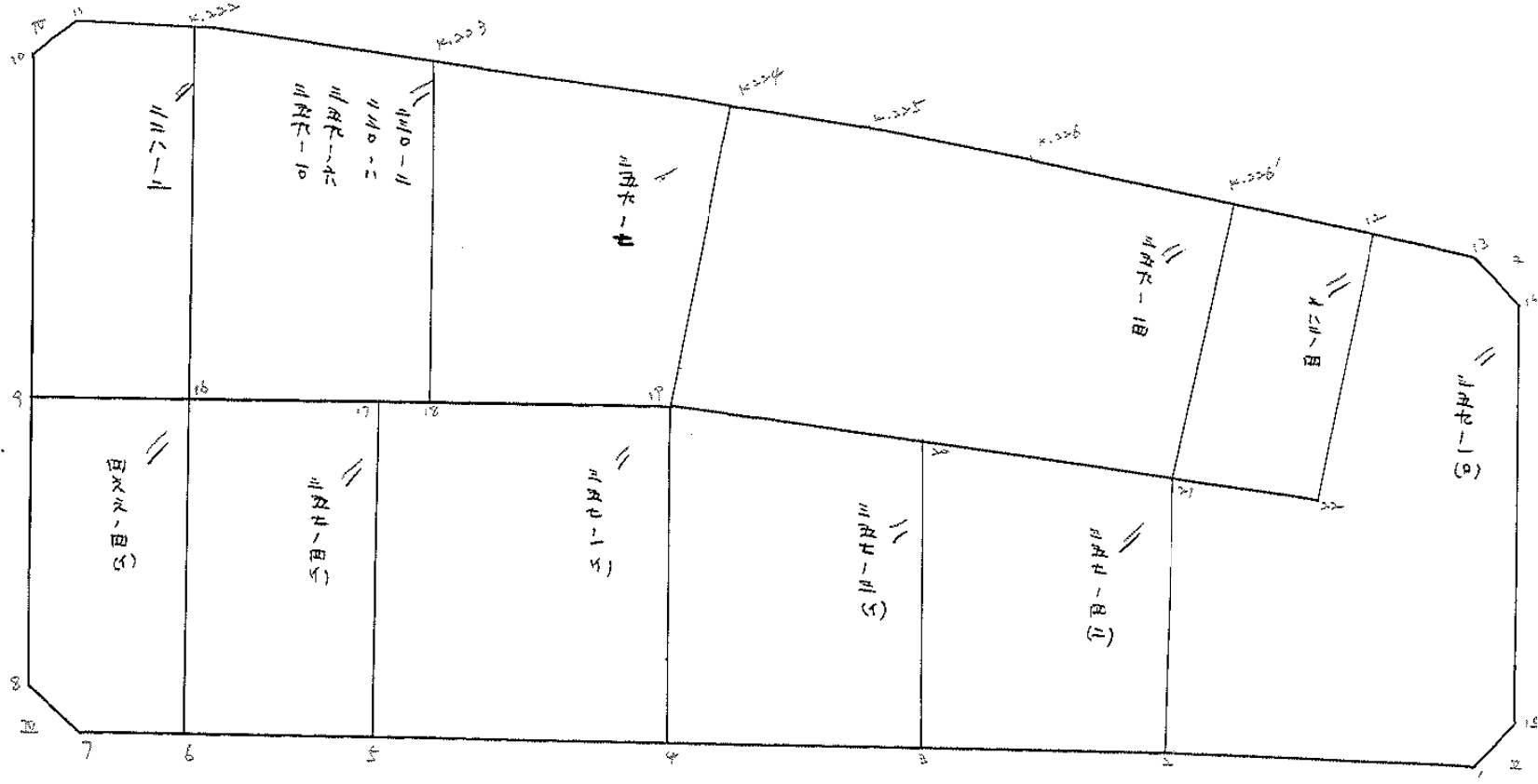
備考

全体

点	①	②	③	④	⑤	⑥	③ × ⑤		② × ⑥	
	X	X-(定数)	X _{n-1} -X _{n+1}	Y	Y-(定数)	Y _{n-1} -Y _{n+1}	+	-	+	-
I	-152,222.142	-152,200 22.142	+56.047	-36.816.265	-36,800 16.465	-25.737			922.813.865	935.723.076
II	-152,318.605	18.605	-0.139	-36,824.816	24.816	+168.196	3.449	424		19948.226580
III	-152,222.009	22.009	-98.668	-36,984.661	184.661	+145.640	18220.131	48		11943.790760
IV	-152,219.937	19.937	-56.889	-36,970.456	170.456	-27.261	9697.071	384		543.502557
K.222	-152,225.120	25.120	+17.031	-36,957.400	157.400	-45.962			2680.679.400	1154.565440
K.223	-152,236.968	36.968	+19.466	-36,924.494	124.494	-54.255			2423.400	2042005.698840
K.224	-152,244.586	44.586	+11.896	-36,903.145	103.145	-32.124			1227.012	9201432.280664
K.225	-152,248.864	48.864	+9.097	-36,892.370	92.370	-22.462			840.289.890	1097.883168
K.226	-152,253.623	53.623	+13.694	-36,880.623	80.623	-31.817			1104.873.002	1702.032011
K.226	-152,262.552	62.552	+28.465	-36,860.553	60.553	-64.218			1723.641.145	4017.349644
									27920.652356	10922.716416.14894.735400
									31892.677340	
									16997.941940	16997.941940
									1/2 = 8498.970970	
									8,498.97 - (4.41 + 4.50 + 4.50 + 4.45) = 8,481.11 m ²	

圖地計算

BND. 6



Handwritten text, possibly a signature or date.



面積計算書

工区

3

ブロック

6

計算者



精算者



備考

豊成 35P-1

点	①	②	③	④	⑤	⑥	③ × ⑤		② × ⑥	
	X	X-(定数)	X _{n-1} -X _{n+1}	Y	Y-(定数)	Y _{n-1} -Y _{n+1}	+	-	+	-
1	-152,317.935	-152,270	- 7.676	-36,827.740	-36,810	+ 51.340	153.912240			2460.822700
2	-152,307.004	37.004	- 33.301	-36,875.486	65.486	+ 42.591	2180.769286			4576.037364
21	-152,284.624	14.674	- 12.353	-36,870.331	60.331	- 27.751	745.268243		406.108134	
22	-152,294.651	24.651	- 12.012	-36,847.735	37.735	- 32.429	453.272956		799.407279	
12	-152,272.622	2.622	- 13.721	-36,837.902	27.902	- 28.529	382.243342		74.803038	
13	-152,280.930	10.930	+ 12.450	-36,819.206	9.206	- 20.767	114.614700		226.283310	
14	-152,285.072	15.072	+ 34.750	-36,817.135	7.135	+ 4.940	247.941280			74.455680
15	-152,315.680	45.680	+ 32.863	-36,824.146	14.146	+ 10.605	464.879998			484.436400
							3916.046531		827.435448	1507.301761
										4595.912344
							3088.610583			3088.610583
									1/2 =	1544.3052915

面積計算書

工区

3

ブロック

6

計算者

豊成

精算者

豊成

備考

豊成 357-4 (二)
" 357-3 (一)

点	①	②	③	④	⑤	⑥	③ ×	⑤	② ×	⑥
	X	X-(定数)	X _{n-1} -X _{n+1}	Y	Y-(定数)	Y _{n-1} -Y _{n+1}	+	-	+	-
2	-152,307.004	-152,270	27.004 + 17.73	-36,875.486	-36,870	5.486 + 25.382		92.316154		939.235528
3	-152,302.373	32.373	-30.09	-36,895.713	25.713 + 14.387	773.832735				465.750751
20	-152,276.909	6.909	17.73	-36,889.873	19.873 - 25.382	353.527147				175.364238
21	-152,284.634	14.634	30.09	-36,870.331	0.331 - 14.387			9.961445		210.539359
							126.357822	107.277197	325.903596	1404.985879
							1019.082283			1019.082283
								1/2 = 509.5411415		
3	-152,302.373	-152,260	42.373 + 20.309	-36,895.713	15.713 + 28.356			319.115317		1201.528788
4	-152,297.218	37.218	34.058	-36,918.229	38.229 + 15.899	1302.003282				591.728982
19	-152,268.315	8.315	20.309	-36,911.612	31.612 - 28.356	642.008108				225.720140
20	-152,276.909	16.909	34.058	-36,889.873	9.873 - 15.899			376.254634		268.836191
							1942.011390	655.369951	504.616771	1793.257770
							1288.641439			1288.641439
								1/2 = 644.3207195		

面積計算書

工区

3

ブロック

6

計算者

田中

精算者

三浦

備考

量成

357-1 (1)

357-4 (1)

点	①	②	③	④	⑤	⑥	③ × ⑤		② × ⑥	
	X	X-(定数)	X _{n-1} -X _{n+1}	Y	Y-(定数)	Y _{n-1} -Y _{n+1}	+	-	+	-
4	-152,297.218	-152,260 37.218	+23.547	-36,918.229	-36,910 8.229	+30.010	123.768263			1116.912120
5	-152,291.862	31.862	-34.282	-36,941.622	31.622	+16.790	1084.065404			434.962980
17	-152,262.936	2.936	-23.547	-36,925.019	25.019	-30.010	589.122393			28.109360
19	-152,268.315	8.315	+34.282	-36,911.612	1.612	-16.790	55.262584			139.608250
							1673.127797	249.030847	227.718210	1651.875160
							1424.156950			1424.156950
									1/2 =	712.078475
5	-152,291.862	-152,250 41.862	+22.174	-36,941.622	-36,930 11.622	+36.094	257.706228			1510.967028
6	-152,285.110	35.110	-35.699	-36,971.113	41.113	+22.874	1467.692987			203.106140
16	-152,256.163	6.163	-22.174	-36,964.496	34.496	-36.094	264.914304			222.447322
17	-152,262.936	12.936	+35.699	-36,935.019	5.019	-22.874	179.173281			295.892064
							2222.607291	436.879509	518.345386	2714.073168
							1795.727282			1795.727282
									1/2 =	897.863641

面積計算書

工区 3 ブロック 6 計算者  管轄者  備考 豊成 466-4 (A)
228-2

点	①	②	③	④	⑤	⑥	③ × ⑤		② × ⑥	
	X	X-(定数)	X _{n-1} -X _{n+1}	Y	Y-(定数)	Y _{n-1} -Y _{n+1}	+	-	+	-
6	-152,285.110	-152,250 35.110	+26.515	-36,971.113	-36,960 11.113	+17,240			294,611.185	605,276.400
7	-152,282.678	32.678	-6.025	-36,981.736	21.736	+12,879	130,959.400			420,259.965
8	-152,279.085	29.085	-29.626	-36,983.992	23.992	-3,702	710,786.992			107,672.670
9	-152,253.052	3.052	-22.927	-36,978.034	18.034	19,496	413,375.348			59,501.792
16	-152,256.163	6.163	+32.058	-36,964.496	4,496	6,921		144,132.768	42,654.123	
							125,121.740	438,793.963	209,828.585	1026,156.365
							816,327.777			1816,327.777
								1/2 = 408,163.8885		
9	-152,253.052	-152,220 33.052	-33.302	-36,978.034	-36,950 28.034	+6,629	933,588.268			219,101.708
10	-152,222.861	2.861	-32.008	-36,971.125	21.125	-10,366	676,169.000			29,657.126
11	-152,221.044	1.044	+2.259	-36,967.668	17.668	-13,725		39,912.012	14,328.900	
12	-152,225.120	5.120	+25.119	-36,957.400	7,400	-3,172		259,880.600	16,540.640	
16	-152,256.163	36.163	+27.932	-36,964.496	14,496	+20,674		404,702.772	746,127.342	
							1609,757.268	504,694.894	60,226.666	965,289.500
							905,062.394			905,062.394
								1/2 = 452,531.192		

面積計算書

工区

3

ブロック

6

計算者

野村

符号者

野村

備考

野村

230-2 359-6
230-8 359-10
759-7

点	①	②	③	④	⑤	⑥	③ × ⑤		② × ⑥	
	X	X-(定数)	X _{n-1} -X _{n+1}	Y	Y-(定数)	Y _{n-1} -Y _{n+1}	+	-	+	-
16	-152.256.163	36.163	+ 38.808	-36.964.496	46.496	- 26.695		1726.800768		765.371285
18	-152.263.928	43.928	- 19.195	-36.930.705	10.705	- 40.002	205.482475			1757.207856
K.223	-152.236.968	16.968	- 38.808	-36.924.494	4.494	+ 26.695	174.403152			452.960760
K.222	-152.225.120	5.120	+ 19.195	-36.957.400	37.400	+ 40.002		717.893000		204.810240
							379.885627	2444.693768	2722.579141	657.771000
								2064.808141	2064.808141	
									1/2 = 1032.4040705	
18	-152.263.928	33.928	+ 31.347	-36.930.705	30.705	- 12.882		962.509634		437.060496
19	-152.268.315	38.315	- 19.342	-36.911.612	11.612	- 27.560	224.599304			1055.961400
K.224	-152.244.586	14.586	- 31.347	-36.903.145	3.145	+ 12.882	98.586315			127.896842
K.223	-152.236.968	6.968	+ 19.342	-36.924.494	24.494	+ 27.560		473.762948		192.038080
							223.185619	1436.272583	1493.021896	329.934932
								1113.086964	1113.086964	
									1/2 = 556.543482	

面積計算書

工区

3

ブロック

6

計算者

田中

清査者

田中

備考

変形 359-14
" 382-4

点	①	②	③	④	⑤	⑥	③ × ⑤		② × ⑥	
	X	X-(定数)	X _{n-1} -X _{n+1}	Y	Y-(定数)	Y _{n-1} -Y _{n+1}	+	-	+	-
19	-152,268.315	-152,200 / 68.315	40.048	-36,911.617	-36.860 / 1.617	-32.814			2066.947376	2241.688410
21	-152,284.634	84.634	-5.757	-36,870.331	10.331	-51.059	59.475	517		4321.327406
K.226	-152,262.558	62.558	-30.951	-36,860.553	0.553	10.352	17.115	903		647.600416
K.226	-152,253.683	53.683	-13.694	-36,880.683	20.683	31.817	283.233	002		1708.032011
K.225	-152,248.864	48.864	-7.097	-36,892.370	32.370	22.462	294.469	890		1097.583168
K.224	-152,244.586	44.586	-19.451	-36,903.145	43.145	19.242			339.213395	847.923812
							654.294362	2906.170771	6563.015816	4311.139407
								2251.876409	2251.876409	
									1/2 = 1125.9382045	
21	-152,284.634	-152,260 / 24.634	32.093	-36,870.331	-36.830 / 40.331	-12.818			1294.342783	215.758612
22	-152,294.651	34.651	-12.012	-36,847.775	17.775	-32.429	213.032	820		1123.697279
12	-152,272.622	12.622	30.093	-36,837.902	7.902	12.818	53.598	886		161.788776
K.226	-152,262.558	2.558	12.012	-36,860.553	30.553	32.429			367.002636	82.953382
							466.631706	1661.345419	1439.455891	244.742178
								1194.713713	1194.713713	
									1/2 = 597.3568565	

面積計算書

工区

3

ブロック

6

計算者

田中

検算者

田中

備考

スリ切

Ⅰ
Ⅱ

面積計算書

点	①	②	③	④	⑤	⑥	③ × ⑤		② × ⑥	
	X	X-(定数)	X _{n-1} -X _{n+1}	Y	Y-(定数)	Y _{n-1} -Y _{n+1}	+	-	+	-
Ⅳ	-152,282.09	-152,270	+ 3.593	-36,984.661	-36,980	- 2.256			16,746,973	27,092,304
7	-152,282.678	12.678	- 2.924	-36,981,736	1.736	- 0.669	5,076,064		8,431,582	
8	-152,279.085	9.085	- 0.669	-36,983,992	3.992	+ 2.925	2,670,648			26,573,625
							7,746,712	16,746,973	35,573,886	26,573,625
								9,000,261	9,000,261	
								1/2	4,500,130	
Ⅳ	-152,219.937	-152,210	+ 1,817	-36,970,456	-36,960	+ 3,457			18,998,542	36,352,209
10	-152,222.861	12.861	+ 1,107	-36,971,125	11,125	- 2,788			12,315,375	25,856,468
11	-152,221.044	11.044	- 2,924	-36,967,668	7,668	- 0.669	22,421,232		7,388,436	
									31,313,927	43,244,904
									8,892,695	8,892,695
									1/2	4,446,347



計年
月
算日

計
算
者



檢
查
者



B.NO. 6

各筆面積計算書

地番	算式	開切	地積	摘要
	豊成 359-1 (口)		1544.30 //	
	豊成 357-4 (二)		509.54 //	
	豊成 357-3 (一)		644.32 //	
	豊成 357-1 (一)		712.07 //	
	豊成 357-4 (一)		897.86 //	
	豊成 466-4 (一)		408.16 //	
	豊成 228-2		242.43 //	
	豊成 ²³⁰⁻² 230-8 359-6 359-10		1032.40 //	
	豊成 359-7		556.54 //	
	豊成 359-14		1125.93 //	
	豊成 382-4		597.35 //	
	計		8,481.00 //	
	全体		8,481.11 //	
		差		
			0.11 m ²	
	換地		8,481.00 m ²	