

**BLOCK NO. 8**  
**街区計算**

街区略図

工区

3

ブロック

~~8~~ 8

記入者



点検者



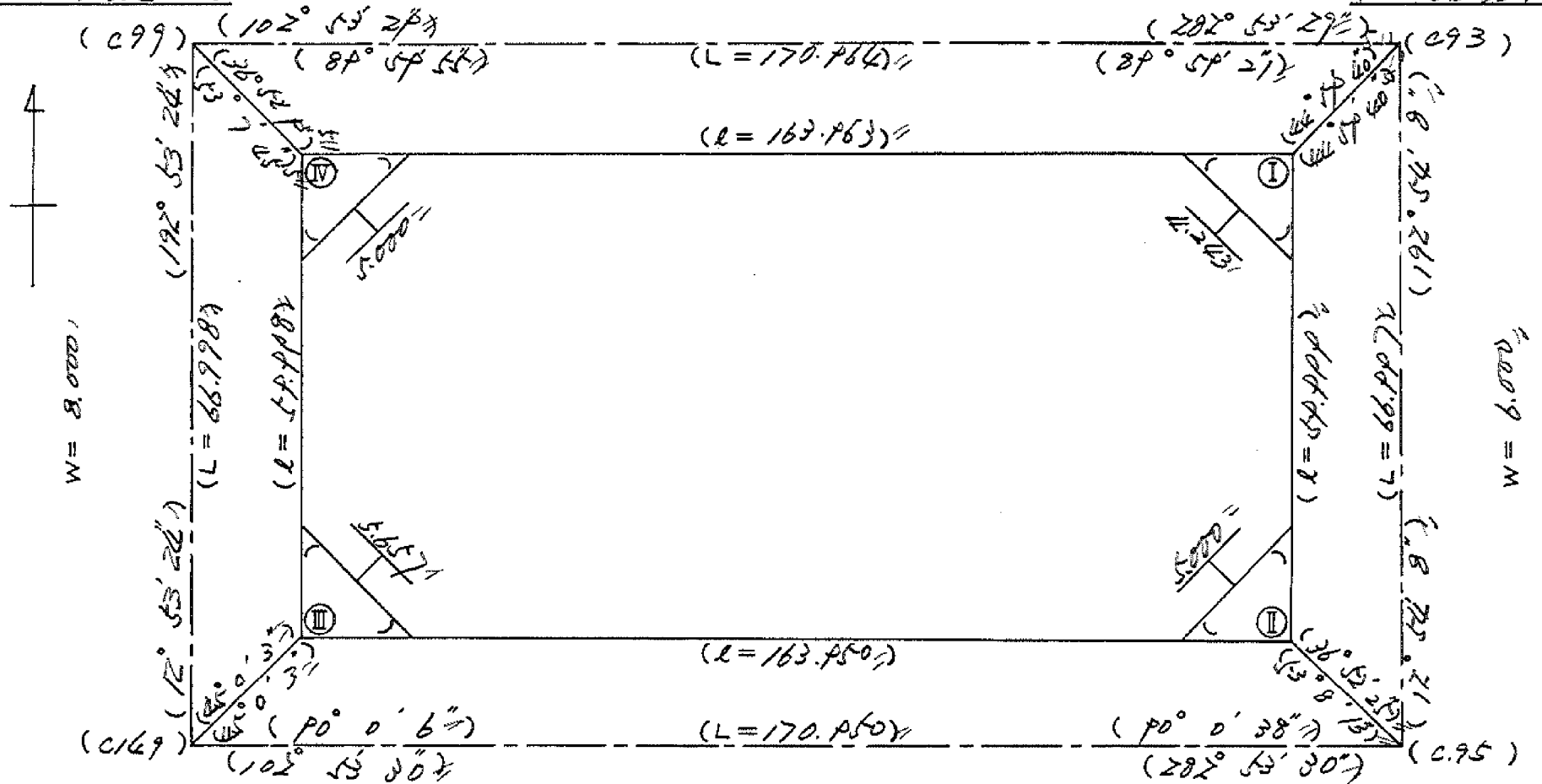
$X = -152.349.267$

$Y = -37.004.178$

$W = 6.000$

$X = -152.387.509$

$Y = -36.837.523$



$X = -152.414.677$

$Y = -37.019.124$

$W = 8.000$

$X = -152.452.817$

$Y = -36.852.483$

# 面積計算書

工  
区

ル

ブ  
ロ  
ク

428

計  
算  
者



精  
算  
者



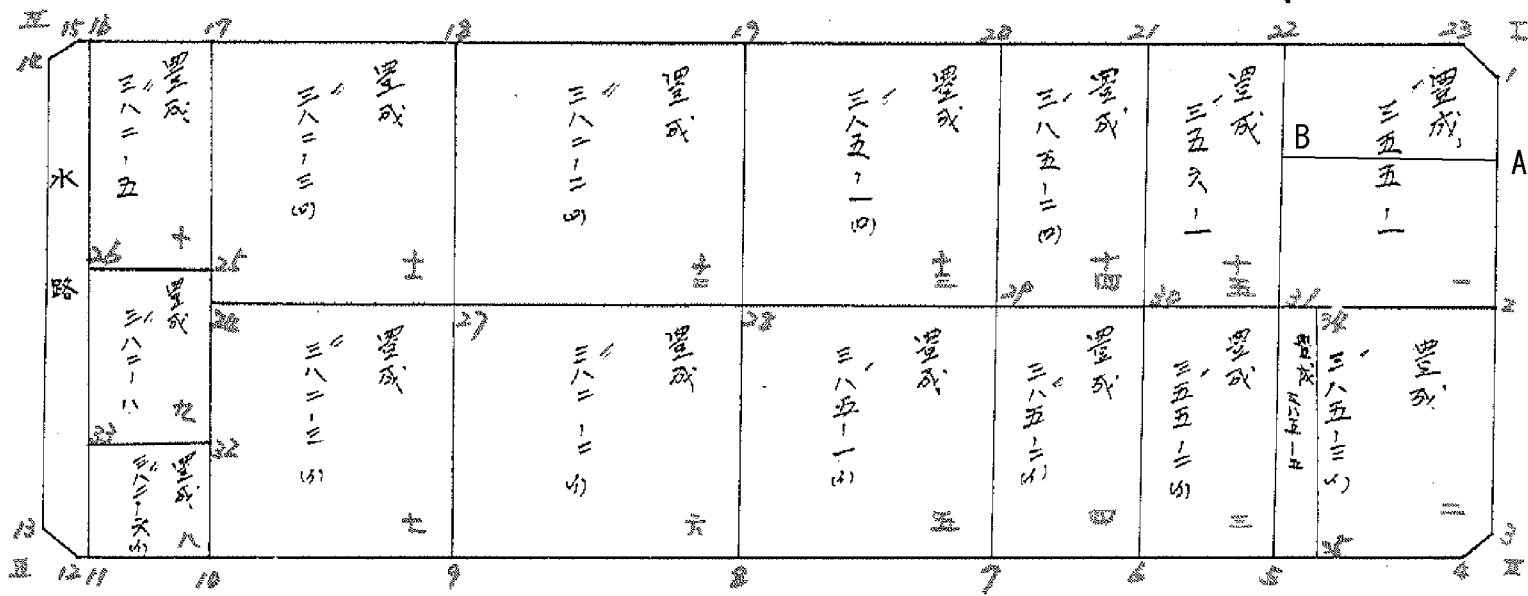
備  
考

全体

点	①	②	③	④	⑤	⑥	③	×	⑤	②	×	⑥
	X	X-(定数)	X <sub>n-1</sub> -X <sub>n+1</sub>	Y	Y-(定数)	Y <sub>n-1</sub> -Y <sub>n+1</sub>	+		-	+		-
I	-152.389.764	-152.300 89.764	+95.064	-36.84.117	-36800 41.117	-146.434				3908.746488	13144.505578	
II	-152.448.248	148.248	+21.906	-36.84.516	44.514	+173.215				1194.183684		2678.777320
III	-152.411.670	111.670	-95.064	-37.016.332	214.332	+146.434	20375.247248					16342.284780
IV	-152.353.184	53.184	-21.906	-37.000.968	200.948	-173.215	4401.946888			9218.266460		
							24277.224136	5102.930172	22356.768136	42031.062100		
							19624.293964					19674.293964
										1/2 =	9837.146982	
					m <sup>2</sup>	Σ I II III IV				m <sup>2</sup>		
					9.837.14	(4.50+4.50+4.50+4.50) =				9.819.14		

# 画地計算

B.No. 48



# 面積計算書

工区

ウ

ブロック

8

計算者



備考

1. 豊成 255-1  
2. 豊成 255-3 (4)

点	①	②	③	④	⑤	⑥	③ × ⑤		② × ⑥	
	X	X - (定数)	X <sub>n-1</sub> - X <sub>n+1</sub>	Y	Y - (定数)	Y <sub>n-1</sub> - Y <sub>n+1</sub>	+	-	+	-
		-152300.000		-36800.000						
1	-152317.688	-92.688	+29.908	-36841.787	-41.787	+3.774		1249.765596		349.804512
2	-152419.003	-119.003	+2118.7	-36847.815	-47.815	+28.438		1013.056405		3384.207314
31	-152413.875	-113.875	-34.366	-36870.225	-70.225	+15.704	2413.352350			1788.293000
22	-152384.637	-84.637	-24.780	-36863.519	-63.519	-26.184	1574.000820		2216.135208	
23	-152389.095	-89.095	+8.051	-36844.041	-44.041	-21.732		354.574091	1736.212540	
								3987.353170	2617.396092	4152.347748
								1369.957078		1369.957078
								$\frac{1}{2} = 684.978539$		
2	-152449.003	-19.003	+31.449	-36847.815	-47.815	-16.381		1503.733935	311.288143	
3	-152445.322	-45.322	+28.576	-36853.844	-53.844	+9.623		1538.646144		436.152852
4	-152447.579	-47.579	-2.206	-36857.638	-57.638	+23.085	126.708228			1098.361215
5	-152443.118	-43.118	-33.704	-36876.929	-76.929	+12.787	2592.815016			551.349866
31	-152413.875	-13.875	-24.115	-36870.225	-70.225	-29.114	1693.475875		403.956750	
								4472.999119	3042.380079	715.244893
								1370.619040		1370.619040
								$\frac{1}{2} = 685.309520$		

座標法面積計算 (DESCRIPTION OF APPLICATION)

(355-1) BLOCKO

測点 STA.NO	X (1)	ΔX (2)	Y (3)	ΔY (4)	(2) × (3)	(1) × (4)
1	-152392.688	-13.985	-36841.787	-.127	515232.391195	19353.871376
A	-152403.080	-5.265	-36844.168	-24.786	193984.544520	3777462.740880
B	-152397.953	18.443	-36866.573	-19.351	-679930.205839	2949052.788503
22	-152384.637	8.858	-36863.519	22.532	-326537.051302	-3433530.640884
23	-152389.095	-8.051	-36844.041	21.732	296631.374091	-3311719.812540
					-618.947335	618.947335
					-309.473667	309.473667

座標法面積計算 (DESCRIPTION OF APPLICATION)

( 25-3 ) BLOCIO

測点 STA.NO	X (1)	ΔX (2)	Y (3)	ΔY (4)	(2) × (3)	(1) × (4)
A	-152403.080 ✓	-21.050	-36844.168 ✓	18.758	775569.736400	-2858776.974640
2	-152419.003 ✓	-10.795	-36847.815 ✓	-26.057	397772.162925	3971581.961171
31	-152413.875 ✓	21.050	-36870.225 ✓	-18.758	-776118.236250	2858979.467250
B	-152397.953 ✓	10.795	-36866.573	26.057	-397974.655535	-3971033.461321
					-750.992460	750.992460
					-375.496230 ✓	375.496230 ✓
					375.50 m ✓	



# 面積計算書

工区

3

ブロック

8

計算者



精算者



備考

豊茂

385-3 (1)

385-5

点	①	②	③	④	⑤	⑥	③ × ⑤		② × ⑥	
	X	X-(定数)	X <sub>n-1</sub> -X <sub>n+1</sub>	Y	Y-(定数)	Y <sub>n-1</sub> -Y <sub>n+1</sub>	+	-	+	-
2	<sup>-152</sup> 419.003	<sup>-152.400</sup> 19.003	+ 30.847	<sup>-36</sup> 847.815	<sup>-36.800</sup> 47.815	- 13.749			1474.949305	261.272247
3	445.324	45.324	+ 28.576	853.844	53.844	+ 9.624			1538.646144	436.198126
4	447.579	47.579	- 1.604	857.438	57.439	+ 20.453	92.132156			973.133287
35	443.720	43.720	- 33.102	874.297	74.297	+ 10.754	2459.379294			443.932880
34	414.477	14.477	- 24.717	867.593	67.593	- 26.482	1670.696181			383.379914
							4222.207631	3013.595449	644.652161	1853.264293
							1208.612132			1208.612132
							1/2 = 604.306066		分筆後の座標なし	
5	<sup>-152</sup> 443.118	<sup>-152.400</sup> 43.118	+ 29.845	<sup>-36</sup> 876.929	<sup>-36.850</sup> 26.929	+ 4.072			803.696005	175.576496
35	443.720	43.720	- 28.641	874.297	24.297	- 9.336	695.390377			408.169920
34	414.477	14.477	- 29.845	867.593	17.593	- 4.072	525.063085			38.950344
31	413.875	13.875	+ 28.641	870.225	20.225	+ 9.336			579.264225	129.537000
							1220.953462	1382.960230	467.120264	305.113496
							162.066768	162.066768		
							1/2 = 81.003384			

面積計算書

工区

ノ

ブロック

8

計算者



精算者





備考

山. 豊成'255-24)  
 4. 豊成'285-24)

点	①	②	③	④	⑤	⑥	③ × ⑤		② × ⑥	
	X	X - (定数)	X <sub>n-1</sub> - X <sub>n+1</sub>	Y	Y - (定数)	Y <sub>n-1</sub> - Y <sub>n+1</sub>	+	-	+	-
31	-152.413.875	-13.875	+32.588	-36.870.225	-70.225	-7.915		2288.492300		109.820625
5	-152.443.118	-43.118	+25.897	-36.876.929	-76.929	+21.321		1992.230313		919.318878
6	-152.439.772	-39.772	-32.588	-36.891.546	-91.546	+7.915	2983.301048			314.795380
20	-152.410.530	-10.530	-25.897	-36.884.844	-84.844	-21.321	2197.205068		224.510130	
							5180.506116	4280.722613	334.330755	1234.114258
							899.783503			899.783503
							1/2 = 449.8917513			
20	-152.410.530	-10.530	+33.012	-36.884.844	-84.844	-9.768		2800.870128		102.857040
6	-152.439.772	-39.772	+25.473	-36.891.546	-91.546	+23.172		2331.951258		921.596784
7	-152.436.003	-36.003	-33.012	-36.909.016	-108.016	+9.768	3365.824192			351.677304
29	-152.406.760	-6.760	-25.473	-36.901.316	-101.316	-23.172	2580.771522		156.642720	
							6146.595714	5132.821386	259.499760	1273.274088
							1013.774328			1013.774328
							1/2 = 506.887164			

面積計算書		工区	ブロック	計算者	精算者	備考				
		丁	48			5.豊成'385-1(1) 6.豊成'382-2(1)				
点	① X	② X-(定数)	③ X <sub>n-1</sub> -X <sub>n+1</sub>	④ Y	⑤ Y-(定数)	⑥ Y <sub>n-1</sub> -Y <sub>n+1</sub>	③ × ⑤ +	⑤ -	② × ⑥ +	⑥ -
29	-152.406.760	-6.760	+35.599	-36.901.314	-1.314	-21.074		46.777086	142.460240	
7	-152.436.003	-36.003	+22.887	-36.909.016	-8.016	+34.474		183.462192		1241.167422
8	-152.429.667	-29.667	-35.599	-36.925.788	-35.788	+21.074	1274.917012			424.780978
28	-152.400.404	-0.404	-22.887	-36.929.090	-29.090	-34.474	665.782930		10.927496	
							1939.799842	230.239278	156.387736	1865.948300
							-1709.560564			-1709.560564
							1/2 = 854.780282			
28	-152.400.404	-152.300 -100.404	+36.647	-36.929.090	-36.900 -29.090	-25.658		1066.061230	2576.165832	
8	-152.429.667	-129.667	+21.838	-36.925.788	-35.788	+39.051		781.538344		5062.844997
9	-152.422.222	-122.222	-36.647	-36.968.141	-68.141	+25.658	2497.163227			3136.485236
27	-152.393.000	93.000	-21.838	-36.961.446	-61.446	-39.051	1341.857748		3631.743000	
							3839.020975	1847.599574	6207.908832	8199.330233
							1991.421401			1991.421401
							1/2 = 995.7107005			

面積計算書

工区  $\omega$  ブロック ~~428~~ 計算者  精算者  備考 7. 豊成'982-3(1)  
8. 豊成'982-6(1)

点	①	②	③	④	⑤	⑥	③ × ⑤		② × ⑥	
	X	X-(定数)	$X_{n-1}-X_{n+1}$	Y	Y-(定数)	$Y_{n-1}-Y_{n+1}$	+	-	+	-
27	-152.313.000	-93.000	+35.508	-36.961.446	-81.446	-20.689			2181.824568	1924.077000
9	-152.422.242	-122.242	+22.975	-36.968.141	-68.141	+34.077			1565.539475	4165.640634
10	-152.415.975	-115.975	-35.508	-36.995.523	-95.523	+20.689	3391.830684			2399.406775
24	-152.386.734	-86.734	-22.975	-36.988.830	-88.830	-34.077	2040.869250		2955.634518	
							5432.699934	3747.364043	4879.711518	6565.047409
							1685.335891			1685.335891
							$\frac{1}{2} = 842.6679455$			
32	-152.405.106	-5.106	+14.394	-36.993.035	-93.035	-12.909			1339.145790	65913354
10	-152.415.975	-15.975	+7.345	-36.995.523	-95.523	+17.885			701.616435	285.712875
11	-152.412.451	-12.451	-14.394	-37.010.920	-110.920	+12.909	1596.582480			160.729959
33	-152.401.581	-1.581	-7.345	-37.008.432	-108.432	-17.885	796.433040		28.276185	
							2393.015520	2040.76222594	189539	446.442834
							352.253295			352.253295
									$\frac{1}{2} = 176.1266475$	

面積計算書						工区	ブロック	計測者	備考
						3	28		9. 壁成'382-8 10. 壁成'382-5
点	①	②	③	④	⑤	⑥	③ × ⑤		② × ⑥
	X	X-(定数)	X <sub>n-1</sub> -X <sub>n+1</sub>	Y	Y-(定数)	Y <sub>n-1</sub> -Y <sub>n+1</sub>	+	-	+ -
25	-152.384.099	-84.099	+24.533	-36.988.227	-88.227	-10.590		2164.472991	890.608410
22	-152.405.106	-105.106	+17.482	-36.993.035	-93.035	+20.205		1626.437870	2123.666730
23	-152.401.581	-101.581	-24.533	-37.008.432	-108.432	+10.590	2660.162256		1075.742790
26	-152.380.573	-80.573	-17.482	-37.003.625	-103.625	-20.205	1811.572250		1627.977465
								4471.734506	3790.910861
								680.823645	2518.585875
									3199.409520
									680.823645
									1/2 = 340.4118225
17	-152.357.489	-57.489	+30.134	-36.982.137	-82.137	-9.309		2475.116358	535.145101
25	-152.384.099	-84.099	+23.084	-36.988.227	-88.227	+21.488		2036.632068	1807.119312
26	-152.380.573	-80.573	-30.134	-37.003.625	-103.625	+9.309	3122.635750		750.054057
16	-152.353.965	-53.965	-23.084	-36.997.536	-97.536	-21.488	2251.521024		1159.599920
								5374.156774	4511.748426
								1694.765021	2557.173369
								862.408348	862.408348
								1/2 431.204174	

面積計算書						工区	ブロック	計算者	精算者	備考
						3	8			11. 豊成'82-3(B) 12. 豊成'82-2(B)
点	①	②	③	④	⑤	⑥	③ × ⑤		② × ⑥	
	X	X-(定数)	X <sub>n-1</sub> -X <sub>n+1</sub>	Y	Y-(定数)	Y <sub>n-1</sub> -Y <sub>n+1</sub>	+	-	+	-
18	-152.363.757	-63.757	+35.511	-36.954.750	-54.750	-20.691		1944.227250	1319.196087	
27	-152.373.000	-93.000	+22.977	-36.961.446	-61.446	+34.080		1411.844742		3169.440000
24	-152.386.734	-86.734	-35.511	-36.988.830	-88.830	+20.691	3154.442130			1794.613194
17	-152.357.489	-57.489	-22.977	-36.982.137	-82.137	-34.080	1987.261849		1959.225120	
							5041.703979	3356.071992	3278.421207	4964.053194
							1685.631987			1685.631987
							1/2 = 842.8159935			
19	-152.371.163	-71.163	+36.647	-36.922.342	-72.392	-25.660		822.599624	1826.042580	
28	-152.400.604	-100.604	+21.837	-36.929.090	-29.090	+39.054		635.238330		3921.177816
27	-152.373.000	-93.000	-36.647	-36.961.446	-61.446	+25.660	2251.811562			2386.380000
18	-152.363.757	-63.757	-21.837	-36.954.750	-54.750	-39.054	1195.575750		2489.965878	
							3447.387312	1455.837954	4316.008458	6307.557816
							1991.549358			1991.549358
							1/2 = 995.774679			

面積計算書

工区

3

ブロック

48

計算者



精算者



備考

13. 豊成'95-1(9)

14. 豊成'95-2(4)

点	①	②	③	④	⑤	⑥	③ × ⑤		② × ⑥	
	X	X-(定数)	X <sub>n-1</sub> -X <sub>n+1</sub>	Y	Y-(定数)	Y <sub>n-1</sub> -Y <sub>n+1</sub>	+	-	+	-
		-152.390			-36.800					
20	-152.377.521	-77.521	+35.597	-36.894.612	-94.612	-21.078		3367.903364	1632.987638	
2P	-152.406.760	-106.760	+22.883	-36.901.314	101.314	+34.478		2318.368262		3680.871280
2B	-152.400.404	100.404	-35.597	-36.929.090	-129.090	+21.078	4595.216730			2116.315512
1P	-152.371.163	-71.163	-22.883	-36.922.392	-122.392	-34.478	2800.676136		2453.557914	
							7395.912866	5686.271626	4087.545552	5797.186792
							1709.641240			1709.641240
							$\frac{1}{2} = 854.820620$			
21	-152.381.291	-81.291	+33.009	-36.878.140	-78.140	-9.768		2579.323260	794.050488	
2D	-152.410.530	-110.530	+25.469	-36.884.864	-84.864	+23.174		2160.891836		2561.422220
2P	-152.406.760	-106.760	-33.009	-36.901.314	101.314	+9.768	3344.273826			1042.831680
20	-152.377.521	-77.521	-25.469	-36.894.612	94.612	-23.174	2409.673028		1796.471654	
							5753.946854	4740.215096	2590.522142	3604.253900
							1013.731758			1013.731758
							$\frac{1}{2} = 506.865879$			

面積計算書						工区	ブロック	計算者	精算者	備考
						3	428			15. 豊成 256-1 永路
点	①	②	③	④	⑤	⑥	③	⑤	②	⑥
	X	X-(定数)	X <sub>n-1</sub> -X <sub>n+1</sub>	Y	Y-(定数)	Y <sub>n-1</sub> -Y <sub>n+1</sub>	+	-	+	-
22	-152.384.637	-84.637	+32.584	-36.863.519	-63.519	-7.915		2069.703096	669.901855	
31	-152.413.875	-113.875	+25.893	-36.870.225	-70.225	+21.325		1812.335925		2428.384375
30	-152.410.530	-110.530	-32.584	-36.884.844	-84.844	+7.915	2764.556896			874.844950
21	-152.381.291	81.291	-25.893	-36.878.160	-78.140	-21.325	2023.279020		1733.530575	3112.111765
							4787.835916	3888.039021	2403.432430	3303.229325
							899.796895			899.796895
							1/2 = 449.8984475			
16	-152.353.965	-53.965	+58.598	-36.997.536	-97.536	+12.897		5715.414528		695.986605
11	-152.412.451	-112.451	+58.374	-37.010.920	-110.920	+13.871		6474.844080		1559.807821
12	-152.412.339	-112.339	-3.705	-37.011.607	-111.407	+2.743	412.762935			308.145877
13	-152.408.766	-108.766	-56.231	-37.013.663	-113.663	-9.790	6391.384153		1064.623340	
14	-152.358.108	-56.108	-54.893	-37.001.617	-101.617	-15.640	5578.061981		877.529120	
15	-152.353.853	-53.853	-2.143	-36.998.023	-98.023	-4.081	210.063289		219.774093	
							12592.272358	12190.258608	21619.26553	2563.940303
							402.013750			402.013750
							1/2 = 201.006875			



面積計算書						工区	3	ブロック	計算者	精算者	備考	
											陽切 1.2	
点	①	②	③	④	⑤	⑥	③	×	⑤	②	×	⑥
	X	X-(定数)	X <sub>n-1</sub> -X <sub>n+1</sub>	Y	Y-(定数)	Y <sub>n-1</sub> -Y <sub>n+1</sub>	+		-	+		-
I	-152.389.764	-89.764	+3.593	-36.841.117	-41.117	-2.254			147.733381	202.328056		
1	-152.382.688	-92.688	-0.669	-36.841.787	-41.787	+2.924	27.955503				271.019712	
23	-152.389.095	-89.095	-2.924	-36.844.061	-44.041	-0.670	128.775884			59.693650		
							156.731387		147.733381	262.027706	271.019712	
							8.998006				8.998006	
							1/2 = 4.499003					
3	-152.445.324	-45.324	+0.669	-36.853.844	-53.844	-2.974			36.021636	132.527376		
II	-152.448.248	-48.248	+2.255	-36.854.516	-54.516	+3.596			122.929070		173.408312	
4	-152.447.579	-47.579	-2.924	-36.857.438	-57.438	-0.670	167.948712			31.877930		
							167.948712		158.950706	164.405306	173.408312	
							8.998006				8.998006	
							1/2 = 4.499003					

面積計算書						工区	ブロック	計測者	精算者	備考
										隅切点4
点	①	②	③	④	⑤	⑥	③	⑤	②	⑥
	X	X-(定数)	X <sub>n-1</sub> -X <sub>n+1</sub>	Y	Y-(定数)	Y <sub>n-1</sub> -Y <sub>n+1</sub>	+	-	+	-
12	-152.62339	-12.339	+2.924	-37.011.407	-11.407	+0.669		33.354068		8.254791
III	-152.411.670	-11.670	-3.593	-37.014.332	-14.332	+2.256	51.494876			26.327520
13	-152.408.746	-8.746	+0.669	-37.013.663	-13.663	-2.925		9.140547	25.582050	
							51.494876	42.494615	25.582050	34.582311
							9.000261			9.000261
							1/2	4.5001305		
14	-152.356.108	-56.108	-0.669	-37.001.617	-101.617	+2.925	67.981773			164.115900
III	-152.353.184	-53.184	-2.255	-37.000.968	-100.968	-3.594	227.637740		191.143296	
15	-152.353.853	-53.853	+2.924	-36.998.023	-98.023	+0.669		286.619252		36.027657
							295.619513	286.619252	191.143296	200.143557
							9.000261			9.000261
							1/2	4.5001305		

計年  
月  
算日

計  
算  
者



檢  
查  
者



B. NO. ~~428~~

各筆面積計算書

地番	算式	隅切地	積	摘要
	豊成 355の1		684.97	
	豊成 385の3 (イ)		604.30	
	385-5		81.00	
	豊成 355の2 (イ)		449.89	
	豊成 385の2 (イ)		506.88	
	豊成 385の1 (イ)		854.78	
	豊成 382の2 (イ)		995.71	
	豊成 382の3 (イ)		842.66	
	豊成 382の6 (イ)		176.12	
	豊成 382の8		340.41	
	豊成 382の5		431.20	
	豊成 382の3 (ロ)		842.81	
	豊成 382の2 (ロ)		995.77	
	豊成 385の1 (ロ)		854.82	
	豊成 385の2 (ロ)		506.86	
	豊成 356の1		449.89	
	水路		201.00	
	計		9,819.07	
	全体		9,819.14	
		差	-0.07	
	換地		9,618.07	
	水路		201.00	