

BLOCK NO. 9

街区計算

街区略図

工区

3

ブロック

9

記入者



点検者



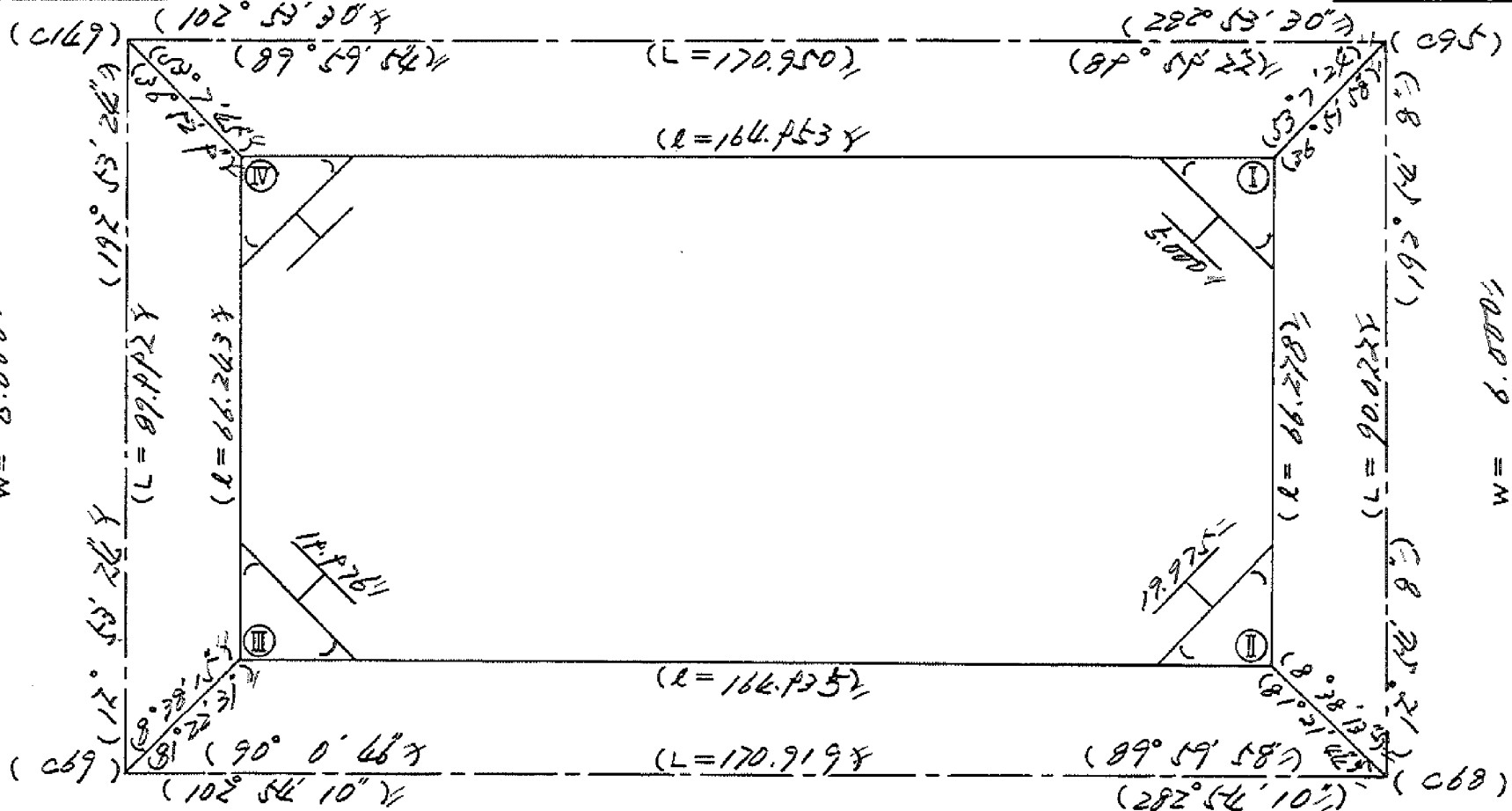
$X = -152.414.677$
 $Y = -37.019.124$

$w = 8.000$

$X = -152.452.817$
 $Y = -36.852.683$



$w = 6.000$



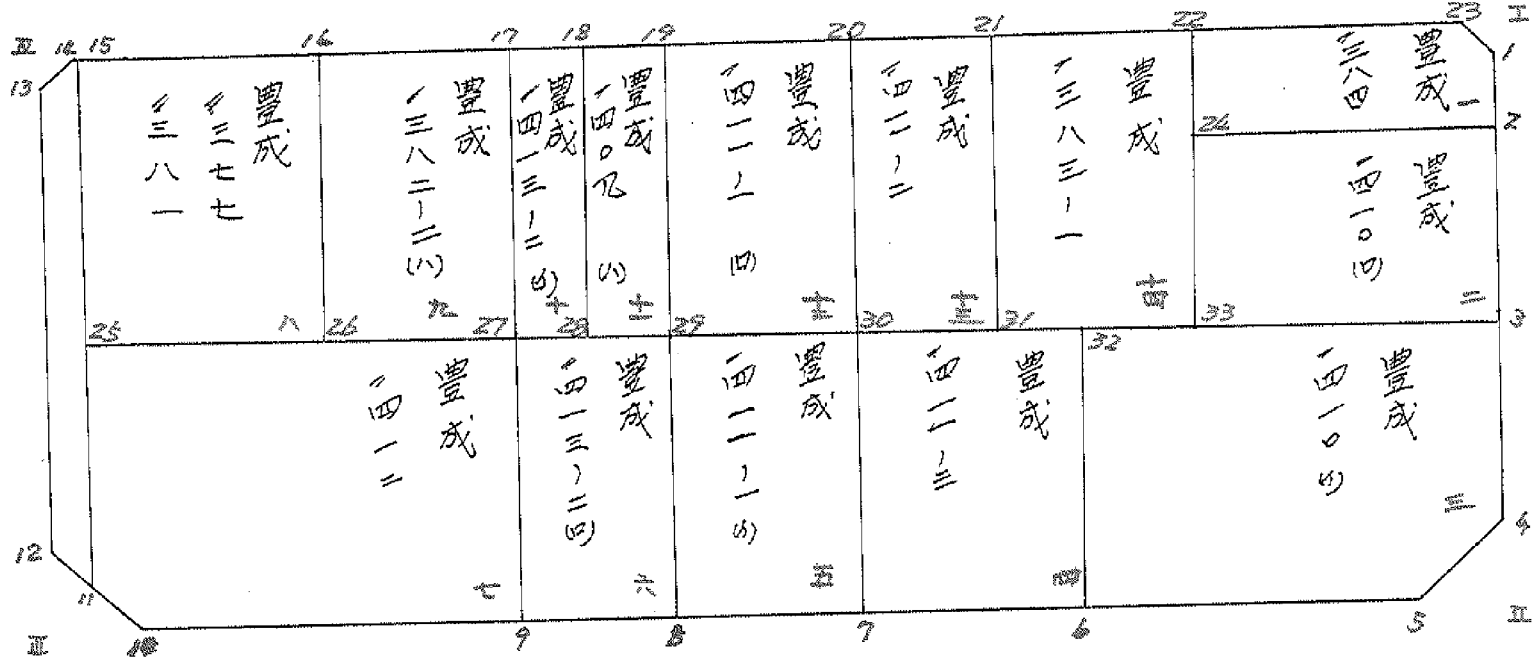
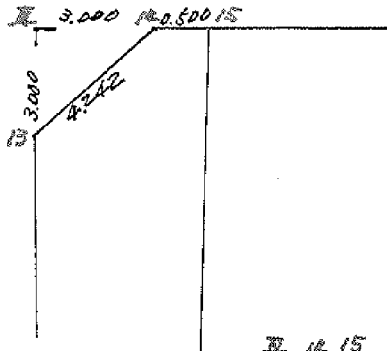
$X = -152.502.601$
 $Y = -37.039.194$

$w = 34.500$

$X = -152.540.571$
 $Y = -36.872.585$

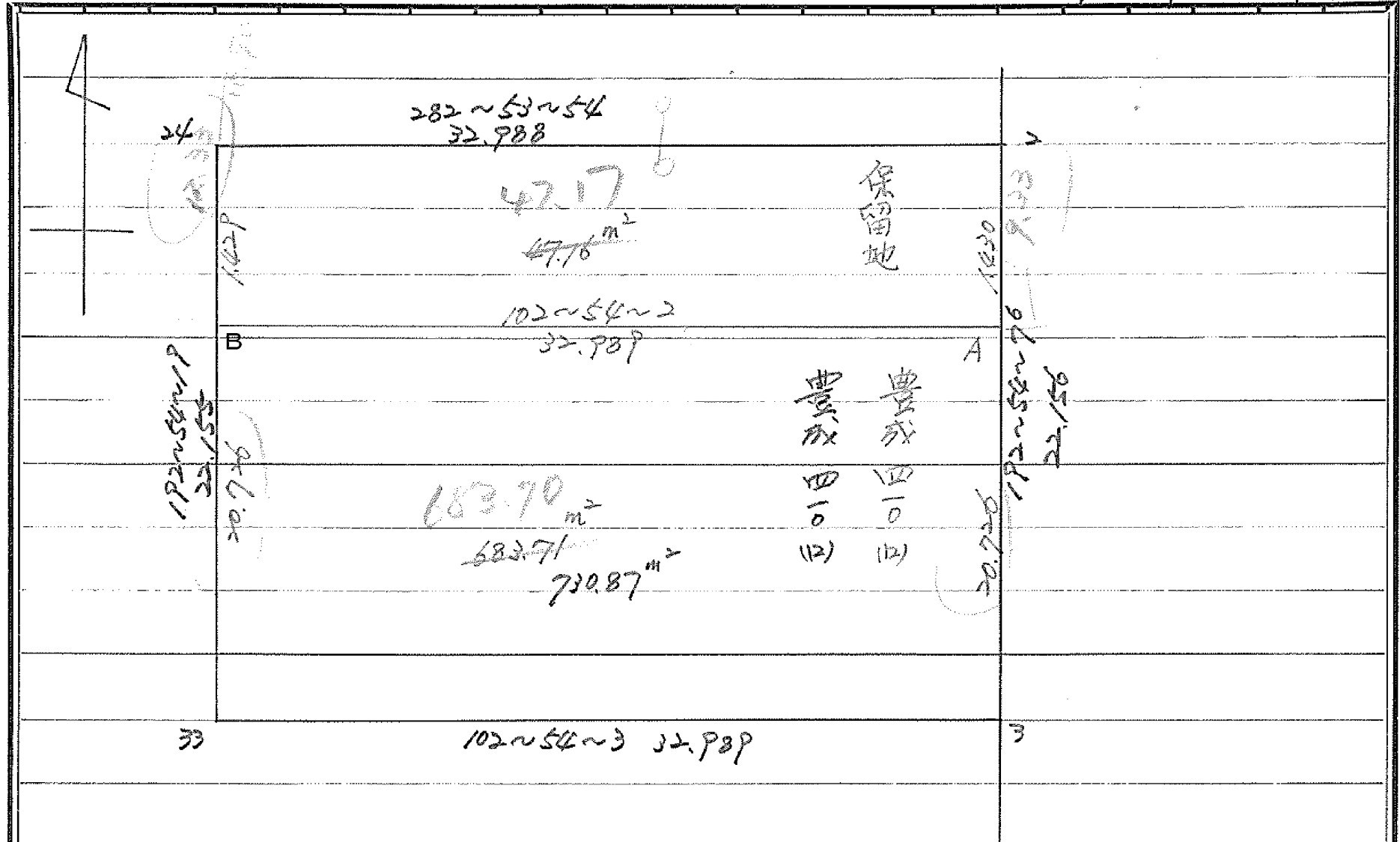
圖地計算

D.No. 49

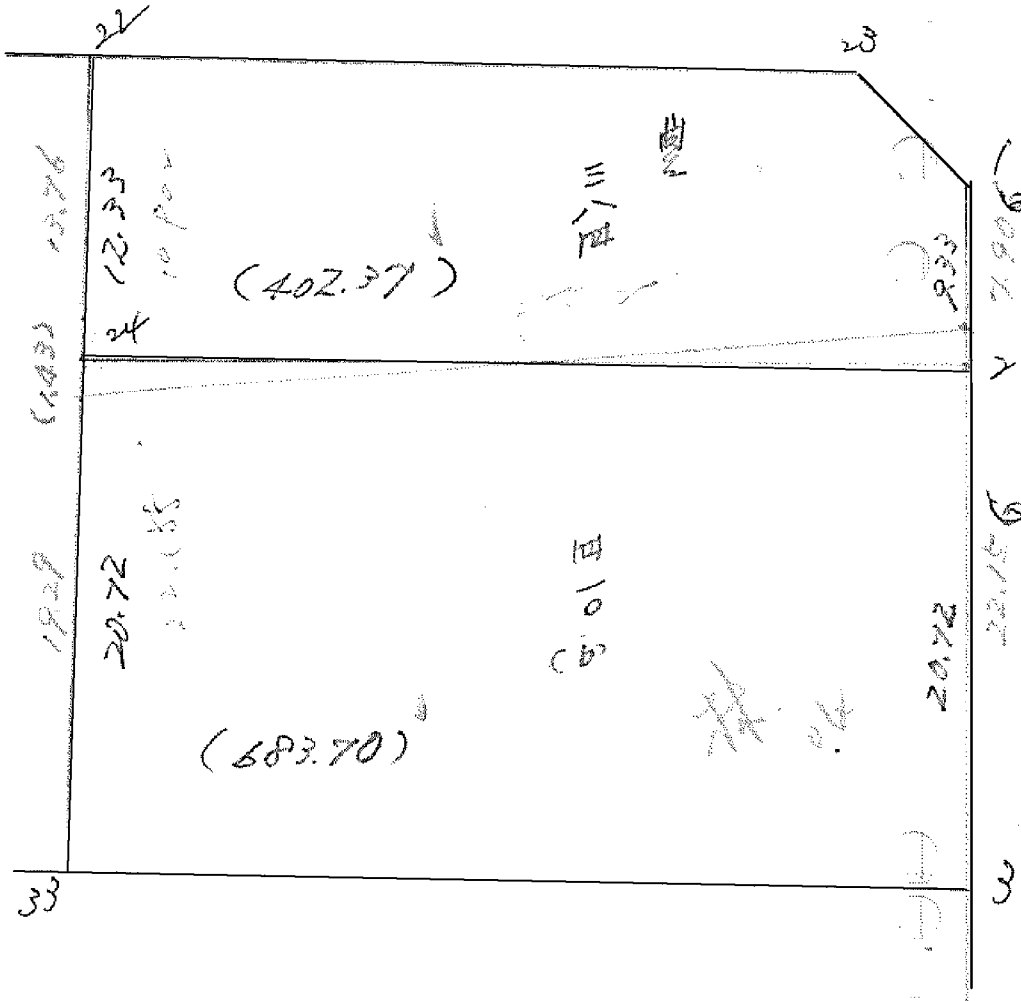


s 53.12.20 変更あり

33Z BHO.P 5'52.8



192° - 54' - 19"



(1086.07)

192° - 54' - 08"

(1086.07)

面積計算書

工区

ω

ブロック

9

計算者

精算者

精算者



備考

1. 量成 384
2. 量成 410 (10)

点	①	②	③	④	⑤	⑥	③ × ⑤		② × ⑥	
	X	X - (定数)	X _{n-1} - X _{n+1}	Y	Y - (定数)	Y _{n-1} - Y _{n+1}	+	-	+	-
		-152.440			-36.850					
1	-152.658.970	18.970	+11.300	-36.856.970	6.970	-0.489		78.761000		9.2763300
2	-152.666.677	26.677	+0.343	-36.858.735	8.735	+33.921		2.996105		904.910517
24	-152.459.313	19.313	-17.991	-36.890.891	40.891	+29.721	735.669981			574.001673
22	-152.448.686	8.686	-3.936	-36.888.656	38.456	-31.667	151.362816			275.059562
23	-152.455.377	15.377	+10.284	-36.859.226	9.224	-31.486		94.859616		484.160222
							387.032797	176.616721	768.496114	1478.912190
							710.416076			710.416076
								1/2 = 355.20		
		-152.450			-36.850					
2	-152.466.677	16.677	+28.960	-36.858.735	8.735	-27.209		252.965600		453.764493
3	-152.488.273	38.273	+14.231	-36.863.682	13.682	+31.104		194.708542		1420.081392
38	-152.480.908	30.908	-28.960	-36.895.899	45.839	+27.209	1327.497440			840.975772
24	-152.659.313	9.313	-14.231	-36.890.891	40.891	-37.104	581.919821			345.549552
							1909.417261	447.674142	799.314045	2261.057164
							1461.743119			1461.743119
								1/2 = 730.87		

面積計算書

工区

3

ブロック

9

計算者



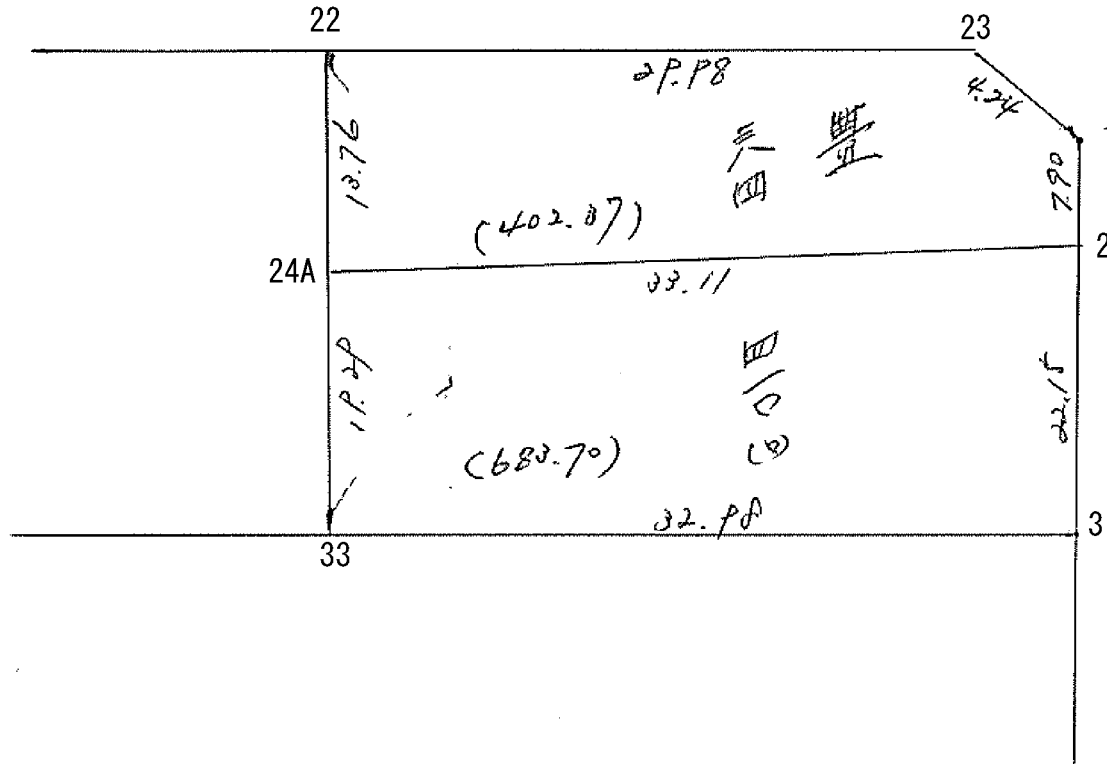
計算名

備考

点	①	②	③	④	⑤	⑥	⑦ × ⑧		⑨ × ⑩	
	X	X - (定数)	X _{n-1} - X _{n+1}	Y	Y - (定数)	Y _{n-1} - Y _{n+1}	+	-	+	-
2	466.677	7.677	+ 2.758	858.735	8.735	- 31.837			76.501130	244.412649
A	468.071	9.071	- 5.971	859.054	9.054	+ 32.475	54.061434			294.580725
B	460.706	1.706	- 8.758	891.210	41.210	+ 31.837	360.917180			54.313.922
24	459.313	0.313	+ 5.971	890.891	40.891	- 32.475			244.160161	10.164675
							44.978614	320.661291	254.577324	342.894647
							94.317323			94.317323
									1/2 = 47.1586615	
										730.87 - 683.71 = 47.16 m²
A	468.071	8.071	+ 27.567	859.054	9.054	- 27.528			249.591618	222.178488
3	488.273	28.273	+ 12.837	863.682	13.682	+ 36.785			175.625834	1040.022305
33	480.908	20.908	- 27.567	895.839	45.839	+ 27.528	123.643713			575.555424
B	460.706	0.706	- 12.837	891.210	41.210	- 36.785	529.012770			25.970210
							1792.656483	425.227452242	42.148690	165.577729
							1367.429031			1367.429031
									1/2 = 683.7145155	

352(9) 2047 變更計畫書

55. 10.20.



面積計算書

点	①	②	③	④	⑤	⑥	③ × ⑤		② × ⑥	
	X	X - (定数)	X _{n-1} - X _n	Y	Y - (定数)	Y _{n-1} - Y _n	+	-	+	-
22	466.677	6.677	- 26.17 ³	258.705	8.705	+ 27.848				
3	488.273	28.270	- 14.231	863.682	13.682	- 27.104				
43	480.908	20.908	+ 26.17 ³	895.839	45.839	- 27.848				
24A	462.100	2.100	+ 14.231	891.530	41.530	+ 27.104				
							1267.427880			✓
							x/2 = 633.713940			
							<u>683.70</u>		682	
22	448.686	8.686	+ 6.72 ³	888.456	28.456	+ 32.306				
23	455.377	15.377	- 10.284	859.224	9.224	+ 31.486				
1	458.970	18.970	- 11.300	856.970	6.970	+ 0.489				
2	466.677	26.677	- 3.130	858.705	9.705	- 34.560				
24A	462.100	22.100	+ 17.991	891.530	41.530	- 29.721				
							804.744752			✓
							x/2 = 402.372376			

豊成410(B) 豊成384

真核

面積計算書

工区

3

ブロック

9

計算者

精算者



備考

3. 豊成 410 (4)

4. 豊成 411-3

点	①	②	③	④	⑤	⑥	③ × ⑤		② × ⑥	
	X	X - (定数)	X _{n-1} - X _{n+1}	Y	Y - (定数)	Y _{n-1} - Y _{n+1}	+	-	+	-
		-152.470			-36.860					
3	152.688.273	18.273	+34.384	36.863.682	3.682	-40.529		126.601883	740.586417	
4	152.542.122	42.122	+30.424	36.869.165	9.145	+15.946		278.227480		671.677412
5	152.518.697	48.697	-2.008	36.879.628	19.628	+47.945	39.413024			2374.777665
6	152.510.114	40.114	-40.959	36.917.090	57.090	+30.046	2338.349310			1205.265244
32	152.677.738	7.738	-21.841	36.909.674	49.674	-53.408	1084.929834		413.271104	
							3462.692168	404.829368	1153.857521	4211.720321
							3057.862800			3057.862800
								$\frac{1}{2} = 1528.93$		
32	152.677.738	7.738	+38.022	36.909.674	9.674	-17.237		367.824828	133.379906	
6	152.510.114	40.114	+26.729	36.917.090	17.090	+32.067		456.798610		1286.335338
7	152.504.467	34.467	-38.022	36.961.741	41.741	+17.237	1587.076702			594.107679
3D	152.472.092	2.092	-26.729	36.934.327	34.327	-32.067	917.526383		67.084164	
							2504.602685	824.623438	200.464070	1880.443317
							1679.979247			1679.979247
								$\frac{1}{2} = 839.98$		

面積計算書

工区

3

ブロック

9

計算者



精算者



備考

5. 豊成 411-14)
6. 豊成 410-2(10)

点	①	②	③	④	⑤	⑥	③ × ⑤		② × ⑥	
	X	X-(定数)	X _{n-1} -X _{n+1}	Y	Y-(定数)	Y _{n-1} -Y _{n+1}	+	-	+	-
		-152.460			-36.930					
30	752.672.092	12.092	+ 37.173	36.934.327	4.327	- 13.535		160.847571	163.665220	
7	752.506.667	44.467	+ 27.576	36.961.761	11.741	+ 28.361		323.769816		1261.128587
8	752.499.668	39.668	- 37.173	36.962.688	32.688	+ 13.535	1215.11024			536.906380
29	752.667.294	7.294	- 27.576	36.955.276	25.276	- 28.361	697.010976		206.865134	
							1912.122000	484.617387	370.530354	1798.034967
							1427.504613			1427.504613
								1/2 = 713.75		
							分筆後の座標なし			
		-152.460			-36.950					
29	752.667.294	7.294	+ 36.191	36.955.276	5.276	- 9.251		190.943716	67.476794	
8	752.499.668	39.668	+ 28.557	36.962.688	12.688	+ 24.074		362.331216		954.967432
9	752.495.851	35.851	- 36.191	36.979.250	29.350	+ 9.251	1062.205850			331.657601
27	752.663.677	3.477	- 28.557	36.971.939	21.939	- 24.074	626.512023		83.705298	
							1188.717877	553.274932	151.182092	1286.625037
							1135.442941			1135.442941
								1/2 = 567.72		

面積計算書

工区

W

ブロック

9

計算者

精算者

備考

7. 豊成 412
8. 豊成 377
381

点	①	②	③	④	⑤	⑥	③ × ⑤		② × ⑥	
	X	X - (定数)	X _{n-1} - X _{n+1}	Y	Y - (定数)	Y _{n-1} - Y _{n+1}	+	-	+	-
27	-152.463.477	-152.450 13.477	+ 43.622	-36.971.939	1.939	- 41.699		84.583058	561.977423	
9	-152.495.851	45.851	+ 22.296	-36.979.350	9.350	+ 51.401		208.467600		2356.787251
10	-152.485.773	35.773	- 16.369	-37.023.360	53.340	+ 47.936	873.122460			1714.814528
11	-152.479.682	29.482	- 33.544	-37.027.286	57.286	- 2.291	1921.601584			67.543262
25	-152.452.229	2.229	- 16.005	-37.021.049	51.049	- 55.347	817.039245			123.368463
							3611.763289	293.050658	752.889148	4071.601779
							3318.712631			3318.712631
								1/2 = 1659.35		
16	-152.426.382	-152.420 6.382	+ 38.564	-36.985.907	5.907	- 20.402		227.797548	130.205564	
26	-152.458.590	38.590	+ 25.847	-36.993.278	13.278	+ 35.142		343.196466		1356.129780
25	-152.452.229	32.229	- 38.564	-37.021.049	41.049	+ 20.402	1583.013636			657.536058
15	-152.420.026	0.026	- 25.847	-37.013.680	33.680	- 35.142	870.526960			0.913692
							2453.540596	570.994014	131.119256	2013.665838
							1882.546582			1882.546582
								1/2 = 941.27		

面積計算書

工
区

3

ブ
ロ
ック

49

計
算
者



精
算
者



備
考

9. 豊成 282-2 (1)
10. 豊成 413-2 (1)

点	①	②	③	④	⑤	⑥	③ × ⑤		② × ⑥	
	X	X - (定数)	X _{n-1} - X _{n+1}	Y	Y - (定数)	Y _{n-1} - Y _{n+1}	+	-	+	-
		-152.420			-36.950					
17	152.431.267	11.267	+ 37.095	36.164.565	4.565	-13.968		119.338675	157.377456	
27	152.463.477	43.477	+ 27.323	36.971.131	11.939	+ 28.717		326.209297		1248.355101
26	152.459.590	38.590	- 37.095	36.993.278	33.278	+ 13.968	1234.447410			539.025120
16	152.426.382	6.382	- 27.323	36.125.107	25.907	- 28.717	707.856961		183.246366	
							1942.304371	495.547972	340.623823	1787.380221
							1446.756399			1446.756399
									1/2 = 723.37	
		-152.430			-36.950					
18	152.433.141	3.141	+ 34.085	36.156.278	6.378	- 0.812		217.394130	2.550492	
28	152.465.352	35.352	+ 30.336	36.913.753	13.753	+ 15.561		417.211008		550.112472
27	152.463.477	33.477	- 34.085	36.971.131	21.939	+ 0.812	747.790815			27.183324
17	152.431.267	1.267	- 30.336	36.164.565	14.565	+ 15.561	441.843840		19.715787	
							1189.634655	634.605138	22.266279	577.295796
							555.029517			555.029517
									1/2 = 277.51	

面積計算書

工区

J

ブロック

49

計算者

精算者

備考

11. 豊成 409 (10)

12. 豊成 411-10

点	①	②	③	④	⑤	⑥	③ × ⑤		② × ⑥	
	X	X - (定数)	X _{n-1} - X _{n+1}	Y	Y - (定数)	Y _{n-1} - Y _{n+1}	+	-	+	-
		-152.430			-36.940					
19	152.425.081	5.081	+34.153	36.967.900	7.900	-1.102		269.808700	5.599262	
29	152.467.296	37.294	+30.271	36.955.276	15.276	+15.853		462.419796		591.221782
28	152.465.202	35.352	-34.153	36.963.753	23.753	+1.102	811.236209			38.957904
18	152.423.161	3.141	-30.271	36.956.378	16.378	-15.853	495.778438		49.794273	
							1307.014647	732.228496	55.393535	630.179686
							574.786151			574.786151
								^{29.39} 1/2 = 287.39		
		-152.430			-36.920					
20	152.439.877	9.877	+37.011	36.921.969	6.949	-13.573		257.189439	134.060521	
30	152.472.092	42.092	+27.417	36.936.207	14.327	+28.327		392.803359		1192.340084
29	152.467.296	37.294	-37.011	36.955.276	35.276	+13.573	1705.600036			506.191462
19	152.425.081	5.081	-27.417	36.967.900	27.900	-28.327	764.974300		143.929487	
							2070.534336	649.992798	277.990008	1698.531546
							1420.541538			1420.541538
									1/2 = 710.27	

面積計算書

工区

3

ブロック

9

計算者

計

精算者



備考

13. 豊成 411-2
14. 豊成 183-1

点	①	②	③	④	⑤	⑥	③ × ⑤		② × ⑥	
	X	X - (定数)	X _{n-1} - X _{n+1}	Y	Y - (定数)	Y _{n-1} - Y _{n+1}	+	-	+	-
		-152.430			-36.910					
21	-152.663.600	13.400	+ 35.741	-36.911.552	1.552	- 8.017		55.470032	107.427800	
21	-152.475.618	45.618	+ 28.692	-36.918.932	8.932	+ 22.775		256.276944		1038.949950
30	-152.472.092	42.092	- 35.741	-36.936.327	24.327	+ 8.017	869.471307			327.451564
20	-152.639.877	9.877	- 28.692	-36.926.969	16.949	- 22.775	486.300708		224.948675	
							1355.772015	311.746976	332.376475	1376.401514
							1044.025039			1044.025039
								1/2 = 522.01		
		-152.440			-36.880					
22	-152.448.686	8.686	+ 37.508	-36.888.456	8.456	- 15.713		317.167648	136.483118	
30	-152.480.908	40.908	+ 26.932	-36.895.839	15.839	+ 30.476		426.575948		1246.712208
31	-152.475.618	35.618	- 37.508	-36.918.932	38.932	+ 15.713	1460.261456			559.665634
21	-152.663.600	3.400	- 26.932	-36.911.552	31.552	- 30.476	849.758464		103.618400	
							2310.019920	743.743596	240.101518	1806.377842
							1566.276324			1566.276324
								1/2 = 783.13		

面積計算書

工区

ウ

ブロック

第 9

計算者

精算者



備考

水路

点	①	②	③	④	⑤	⑥	③ × ⑤		② × ⑥	
	X	X - (定数)	X _{n-1} - X _{n+1}	Y	Y - (定数)	Y _{n-1} - Y _{n+1}	+	-	+	-
15	-152.420.026	-152.410 10.026	+59.568	-37.013.680	-37.010 3.680	+13.118				
11	-152.479.692	59.482	+55.263	-37.027.296	17.286	+16.237				
12	-152.475.289	65.289	-57.312	-37.029.917	19.917	-9.525	1141.483104		621.877725	
13	-152.422.170	12.170	-55.375	-37.017.761	7.761	-15.749	429.765375		191.665330	
14	-152.419.916	9.914	-2.144	-37.014.168	4.168	-4.081	8.936192		40.459074	
							1580.184671	1174.486458	854.002089	1259.700302
							405.698213			405.698213
								1/2 = 202.84		

面積計算書

工区

3

ブロック

9

計算者



精算者



備考

昭和1.2.3

点	①	②	③	④	⑤	⑥	③ × ⑤		② × ⑥	
	X	X - (定数)	X _{n-1} - X _{n+1}	Y	Y - (定数)	Y _{n-1} - Y _{n+1}	+	-	+	-
I	-152.456.066	-152.450 6.046	+ 3.593	-36.856.300	-36.850 6.300	- 2.254		22.635900	13.627684	
1	-152.458.970	8.970	- 0.669	-36.856.970	6.970	+ 2.924	4.662930			26.228280
23	-152.465.377	5.377	- 2.924	-36.859.224	9.224	- 0.670	26.970976		3.602590	
							31.633906	22.635900	17.230274	26.228280
							8.998006	1/2 = 4.49		8.998006
4	-152.512.122	-152.510 2.122	+ 1.954	-36.869.165	-36.860 9.145	- 8.529		17.869330	18.098538	
II	-152.520.651	10.651	+ 6.575	-36.871.099	11.099	+ 10.483		72.975925		111.654433
5	-152.518.617	8.697	- 8.529	-36.879.628	19.628	- 1.954	167.407212		16.993938	
							167.407212	90.845255	35.092476	111.654433
							76.561957	1/2 = 38.28		76.561957
10	-152.485.773	-152.470 15.773	+ 8.530	-37.023.360	-37.020 3.340	+ 1.952		29.490200		30.789896
III	-152.483.819	13.819	- 10.484	-37.021.869	11.869	+ 6.577	124.434596			90.887563
IX	-152.475.289	5.289	+ 1.954	-37.029.917	9.917	- 8.529		19.377818	45.109881	
								47.868018		121.676459
							76.566578			76.566578

面積計算書

工区

3

ブロック

49

計算者



精算者



備考

陽田 4.

点	①	②	③	④	⑤	⑥	③ × ⑤		② × ⑥	
	X	X - (定数)	X _{n-1} - X _{n+1}	Y	Y - (定数)	Y _{n-1} - Y _{n+1}	+	-	+	-
13	-152.422.170	-152.410 12.170	-0.669	-37.017.761	-37.010 7.761	+2.924	5.192.109			35.585080
IV	-152.419.245	9.245	-2.256	-37.017.092	7.092	-3.573	15.999552		33.217285	
14	-152.419.916	9.914	+2.925	-37.016.168	4.168	+0.669		12.191400		6.632466
							21.191661			42.217546
							9.000261			9.000261
								1/2 = 4.50		

計年 46.
月 9
日 10

計算者



検査者



B.NO. 9

各筆面積計算書

地番	算式	隔切地積	摘要
	豊成 384	355 20%	
	豊成 410 (ロ)	730 87%	
	豊成 410 (ハ)	1,528 93%	
	豊成 411 の 3	839 98%	
	豊成 411 の 1 (ハ)	713 75%	
	豊成 413 の 2 (ロ)	567 72%	
	豊成 412	1,659 35%	
	豊成 377 } 381 }	941 27%	
	豊成 382 の 2 (ハ)	723 37%	
	豊成 413 の 2 (ハ)	277 51%	
	豊成 409 (ハ)	287 39%	
	豊成 411 の 1 (ロ)	710 27%	
	豊成 411 の 2	522 01%	
	豊成 383 の 1	783 13%	
	水路	202 84%	
	計	10,843 59%	
	全体	10,843 64%	
		差 -0 05%	
	換地	10,640 75%	
	水路	202 84%	