

**BLOCK NO. 21**

**街 区 計 算**

街区略図

工区

3

ブロック

35 21

記入者



点検者



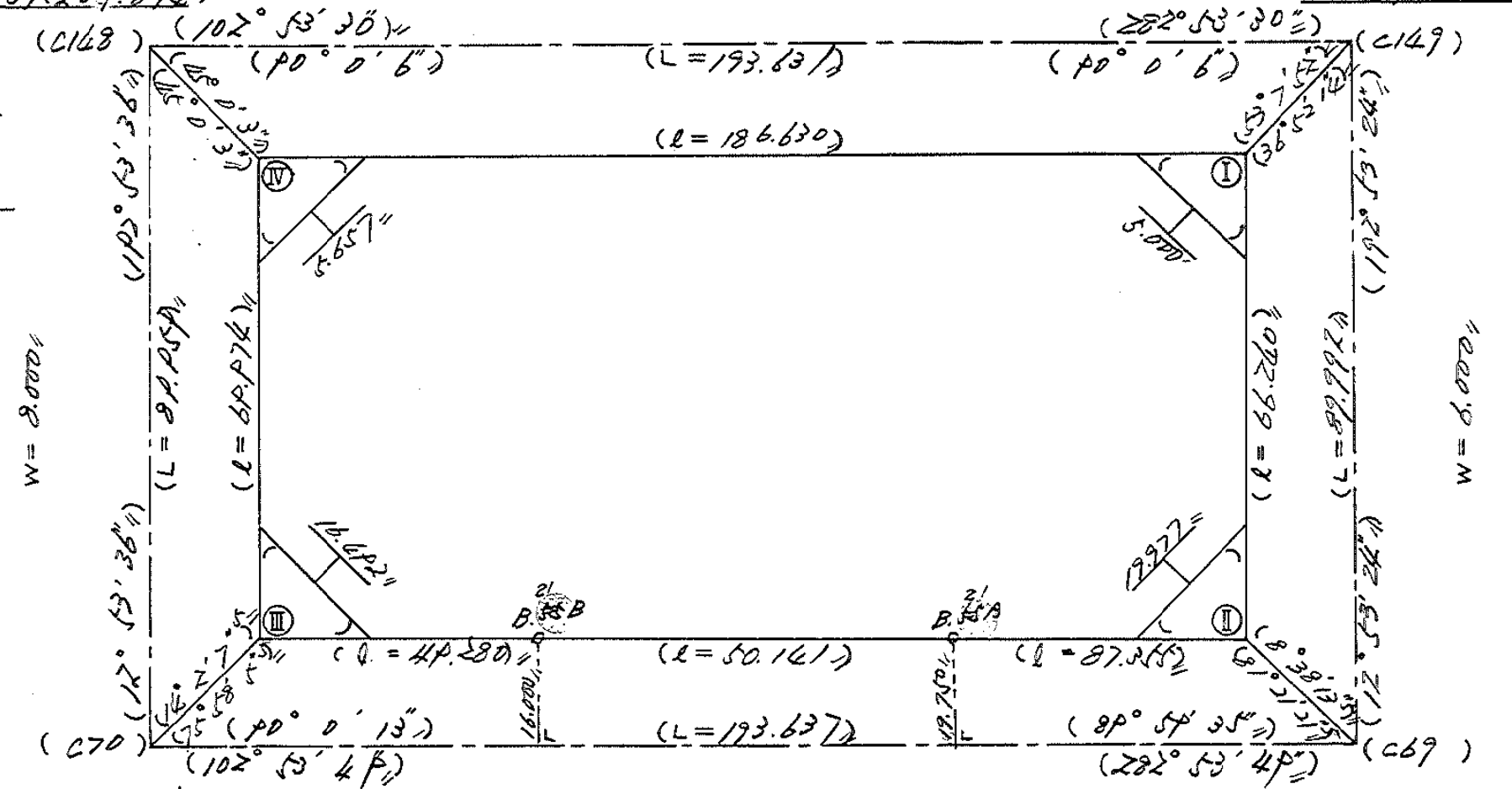
$X = -152.371.476''$

$Y = -37.207.874''$

$W = 8.000''$

$X = -152.414.677''$

$Y = -37.019.124''$



$X = -152.659.182''$

$Y = -37.227.951''$

$W = 32.000''$

$W =$

$W = 39.500''$

$X = -152.502.401''$

$Y = -37.039.199''$

# 面積計算書

工  
区

3

ブ  
ロ  
ック

55 Z1

計  
算  
者

通  
口

精  
算  
者

養  
正

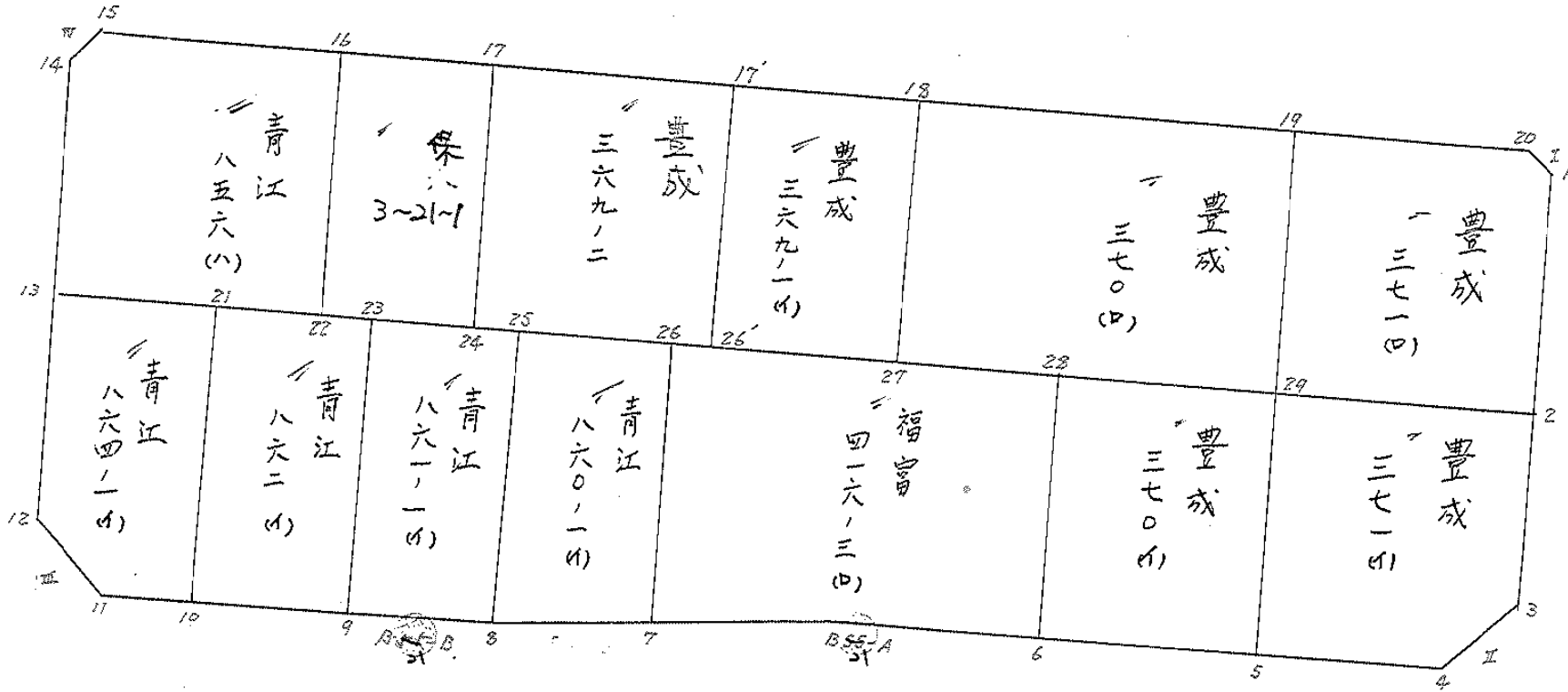
備  
考

全体

点	①	②	③	④	⑤	⑥	③ × ⑤	② × ⑥
	X	X-(定数)	X <sub>n-1</sub> -X <sub>n+1</sub>	Y	Y-(定数)	Y <sub>n-1</sub> -Y <sub>n+1</sub>	+ -	+ -
I	-152.417.907	-152.300 -117.907	+106.251	-37.022.941	-37.00 -22.941	-167.149	2436.58655	19708.037143
II	-152.482.479	-182.479	+45.074	-37.037.718	-37.718	+99.928	1700.101132	18234.761512
<sup>21</sup> B <sup>21</sup> A	-152.462.981	-162.981	-27.002	-37.122.869	-122.869	+134.727	3317.708738	21957.941187
<sup>21</sup> B <sup>21</sup> B	-152.455.477	-155.477	-18.503	-37.172.445	-172.445	+97.613	3190.749835	1517657640
III	-152.444.478	-144.478	-79.209	-37.220.482	-220.482	+32.422	17464.158738	4684.265716
IV	-152.376.268	-76.268	-26.571	-37.204.867	-204.867	-197.541	5443.521057	15066.056988
							29416.138368	4136.687683
							34774.094131	60053.544816
							25279.450685	25279.450685
							1/2 = 12639.7253425	
							ΣキツI II III IV 12,639.72 - (4.50 + 38.28 + 38.28 + 4.50) = 12,554.16	

# 画地計算

BNO 55 21



面積計算書						工区	3	ブロック	21	計算者	精算者	備考	豊成 27/9(0), 37/0(0)
点	①	②	③	④	⑤	⑥	③ × ⑤	② × ⑥					
	X	X-(定数)	X <sub>n-1</sub> -X <sub>n+1</sub>	Y	Y-(定数)	Y <sub>n-1</sub> -Y <sub>n+1</sub>	+	-					
1	-152000 420.831	-152410 10.831	+32.839	-37000 23.610	-37020 3.610	+4.437		118.548790	48.057147				
2	450.076	40.076	+22.188	30.303	10.303	+37.523		228.602964	1503.771748				
29	443.019	33.019	-39.225	61.133	41.133	+23.465	1613.441925		774.790815				
19	410.851	0.851	-25.782	53.768	33.768	-35.267	870.606576		30.012217				
20	-152000 417.237	7.237	+9.980	-37000 75.866	5.866	-30.158		88.542680	218.253446				
							2484.048501	405.694474	248.265667	2326.619730			
							2078.354067			2078.354067			
								1/2 =	1039.177035				
7	-152000 450.076	-152440 10.076	+30.929	-37000 30.303	-37030 0.303	-25.367		9.371487	255.597892				
3	473.948	33.948	+30.450	35.766	5.766	+15.944		175.574700	541.266912				
4	480.526	40.526	+1.471	46.247	16.247	+32.785		23.899337	1328.644910				
5	475.419	35.419	-37.507	68.551	38.551	+14.886	1445.932357		527.247234				
29	-152000 443.019	3.019	-25.347	-37000 61.133	31.133	-38.248	789.003619		115.470712				
							2234.935976	208.845524	371.068604	2397.159056			
							2026.090452			2026.090452			
								1/2 =	1013.045226				

面積計算書										工区	3	ブロック	21	計算者	精算者	備考	完成 370.000	測量 220.000
点	①	②	③	④	⑤	⑥	③ × ⑤	② × ⑥										
	X	X-(定数)	X <sub>n-1</sub> -X <sub>n+1</sub>	Y	Y-(定数)	Y <sub>n-1</sub> -Y <sub>n+1</sub>	+	-	+	-								
19	-152000 410.851	-152400 10.851	+42.944	-37000 73.768	37050 3.768	-39.720			161.812992	421.001720								
29	443.019	43.019	+21.390	61.133	11.133	+54.449			232.134870	2342.341531								
27	432.241	32.241	-42.944	108.217	18.217	+39.720	2500.070848			1280.612520								
18	-152000 400.075	0.075	-21.390	-37000 100.853	37050 10.853	+4.449	1087.745620			4.083675								
							3587.816512	389.947862	435.085395	3622.954281								
							3187.868656			3187.868656								
									1/2	1593.934328								
29	-152000 443.019	-152430 13.019	+38.526	-37000 61.133	-37060 1.133	-19.342			43.649958	251.813498								
5	475.419	45.419	+26.274	68.551	8.551	+34.173			224.668974	1552.103487								
6	469.293	39.293	-38.526	95.306	35.306	+19.342	1360.198956			760.005206								
28	-152000 436.893	6.893	-26.274	-37000 87.893	37050 27.893	-34.173	732.860682			235.554489								
							2,093.059638	268.318932	487.367987	2212.108692								
							1,824.740706			1,824.740706								
									1/2	912.370353								

面積計算書		工区	3	ブロック	21	計算者	精算者	備考	福富 41603(口)	青江 86001(イ)
点	①	②	③	④	⑤	⑥	③	⑤	②	⑥
	X	X-(定数)	X <sub>n-1</sub> -X <sub>n+1</sub>	Y	Y-(定数)	Y <sub>n-1</sub> -Y <sub>n+1</sub>	+	-	+	-
28	-152000 436.893	-152420 16.893	+43.461	-37000 87.893	-37080 7.893	-40.910			343.037673	691.092630
6	469.293	49.293	+26.088	95.306	15.306	+34.976			399.302928	1724.071968
21 A	462.981	42.981	-9.499	122.869	42.869	+48.621	407.212631			2089.779201
7	459.794	39.794	-37.149	143.927	63.927	+13.347	2374.824123			531.130518
26	-152000 425.832	-152420 5.832	-22.901	-37000 136.216	-37130 56.216	-56.074	1287.402616		326.790288	
							4069.439370	742.340601	1017.882819	4344.981687
							3327.098769			3327.098769
									1/2 =	1663.5493845
26	-152000 425.832	-152420 5.832	+38.202	-37000 136.216	-37130 6.216	-10.811			237.463632	63.049752
7	459.794	39.794	+31.110	143.927	13.927	+26.549			433.268990	1086.490906
8	456.942	36.942	-38.202	162.765	32.765	+10.811	1251.688430			399.379962
25	-152000 421.592	-152420 1.592	-31.110	-37000 154.738	-37130 24.738	-26.549	769.599180		43.266008	
							2021.287710	670.732602	105.315760	1455.870868
							1350.555108			1350.555108
									1/2 =	675.277554



面積計算書		工区	3	ブロック	計算者	精算者	備考	計区 2619/ (1) 862 (1)	
点	①	②	③	④	⑤	⑥	③ × ⑤	② × ⑥	
	X	X-(定数)	X <sub>n-1</sub> -X <sub>n+1</sub>	Y	Y-(定数)	Y <sub>n-1</sub> -Y <sub>n+1</sub>	+	-	
Zf	-152000 421.592	-152410 11.592	+39.585	37000 154.738	-37150 4.738	-10.474		187.553730	121.414608
8	456.942	46.942	+33.885	162.765	12.765	+17.907		432.542025	831.201994
21 B	455.477	45.477	-3.535	172.445	22.445	+18.719		79.743075	851.283963
P	453.407	43.407	-38.120	181.484	31.484	+0.794		1200.170080	34.465158
Z3	-152000 417.357	-152410 7.357	-31.815	-37000 173.239	-37170 23.239	-26.746		739.348785	196.770722
								2018.861940	620.095755
								318.184930	1716.951115
								1398.766185	1398.766185
								1/2 = 699.3830925	
Z3	-152000 417.357	-152410 7.357	+40.513	-37000 173.239	-37170 3.239	-11.251		131.221607	82.773607
P	453.407	43.407	+31.586	181.484	11.484	+27.744		362.733624	1204.283808
10	448.943	38.943	-40.513	20.983	30.983	+11.251		1255.214279	438.147693
Z1	-152000 412.894	-152410 2.894	-31.586	-37000 192.735	-37170 22.735	-27.744		718.107718	80.291136
								1773.321789	493.955236
								162.064783	1642.421501
								1479.366758	1479.366758
								1/2 = 737.683379	

面積計算書						工区	3	ブロック	21	計算者	精算者	備考	86601 (1) (保) 3~21~1
点	①	②	③	④	⑤	⑥	③ × ⑤	② × ⑥					
	X	X-(定数)	X <sub>n-1</sub> -X <sub>n+1</sub>	Y	Y-(定数)	Y <sub>n-1</sub> -Y <sub>n+1</sub>	+ -	+ -					
10	-152000 448.943	-152400 48.943	+33.537	-37000 200.983	-37190 10.983	+19.218	368.336871	940.586574					
11	466.431	46.431	-12.994	211.953	21.953	+17.546	284.257282	814.678326					
12	435.949	35.949	-38.000	218.529	28.529	+0.277	1084.102000	9.957873					
13	408.431	8.431	-23.055	212.730	22.230	+25.794	12.12650	217.469214					
21	-152000 412.894	-37000 12.894	+40.512	192.735	2.735	-11.247	110.200320	145.018818					
							1881.871932	479.137191					
							362.488032	1765.222773					
							1402.734741	1402.734741					
								1/2 = 701.3673705					
16	-152000 384.513	-152380 4.513	+28.584	-37000 168.845	-37150 18.845	+23.010	538.665480	103.844130					
22	416.677	36.677	+35.745	176.211	26.211	-8.279	936.912195	303.648883					
24	420.258	40.258	-28.584	160.566	10.566	-23.010	302.018544	926.336580					
17	-152000 388.093	-37000 8.093	+35.745	153.201	3.201	+8.279	114.619745	67.001947					
							416.438289	1475.577675					
							1229.985463	170.846077					
							1059.139386	1059.139386					
								1/2 = 529.569693					

面積計算書						工区	3	ブロック	21	計算者	精算者	備考	青江 8560(12)	豊成 36902
点	①	②	③	④	⑤	⑥	③ × ⑤	② × ⑥						
	X	X-(定数)	X <sub>n-1</sub> -X <sub>n+1</sub>	Y	Y-(定数)	Y <sub>n-1</sub> -Y <sub>n+1</sub>	+	-						
13	-152000 408.431	-152370 38.431	+37.486	-37000 212.230	-37160 52.230	-29.325	1957.893780	1126.989075						
22	416.677	46.677	-23.918	176.211	16.211	-43.385	387.734698	2025.081645						
16	384.513	14.513	-39.740	168.845	8.845	+25.732	351.500300	273.228516						
15	376.937	6.937	-5.322	201.943	41.943	+36.691	223.228646	254.225467						
14	-152000 379.191	9.191	+31.494	-37000 205.536	45.536	+10.287	1434.110784	94.547817						
							962.455644	3392.004564						
							3152.070720	722.521800						
							2429.548920	2429.548920						
							1/2 = 1214.774460							
17	-152000 388.093	-152380 8.093	+24.900	-37000 153.201	-37120 33.201	+39.105	826.704900	316.476765						
24	420.258	40.258	+39.430	160.566	40.566	-24.374	1599.717380	981.248492						
26	427.523	47.523	-24.900	128.227	8.227	-39.105	219.792300	1858.386915						
17'	-152000 395.358	15.358	-39.430	-37000 121.461	1.461	+24.374	87.607230	374.335892						
							277.389530	2426.222280						
							2239.635407	690.812657						
							2148.822750	2148.822750						
							1/2 = 1074.411375							

面積計算書						工区	3	ブロック	Z	計算者	精算者	備考	豊成 36P-10(4)	(I)	
点	①	②	③	④	⑤	⑥	③	×	⑤	②	×	⑥			
	X	X-(定数)	X <sub>n-1</sub> -X <sub>n+1</sub>	Y	Y-(定数)	Y <sub>n-1</sub> -Y <sub>n+1</sub>	+		-	+		-			
17	-152000 390.358	-152390 5.358	+ 27.448	-37000 121.461	-37100 21.461	+ 27.974				589.061528			149.884692		
26'	427.523	37.523	+ 36.883	128.227	28.227	- 13.244				1063.226241			496.954612		
27	432.241	42.241	- 27.448	108.217	8.217	- 27.974			225.540216				1181.649724		
18	-152000 400.075	10.075	- 36.883	-37000 150.853	0.853	+ 13.244				31.461199			133.433300		
										257.001415			1652.287769	1678.604346	283.317992
										1395.286354			1395.286354		
													1/2 = 697.643177		
I	-152000 417.907	-152410 7.907	+ 3.594	-37000 22.941	-37020 2.941	- 2.256				10.569954			17.838192		
1	420.831	10.831	- 0.670	23.610	3.610	+ 2.925				2.418700			31.680675		
20	417.237	7.237	- 2.924	25.866	5.866	- 0.669				17.152184			4.841553		
										19.570884			10.569954	22.679745	31.680675
										9.000930				9.000930	
													1/2 = 4.500465		

枚  
9-9

面積計算書

工区

3

ブロック

Z1

~~4~~

計算者



精算者



備考

(Ⅱ)・(Ⅳ)

点	①	②	③	④	⑤	⑥	③ × ⑤		② × ⑥	
	X	X-(定数)	X <sub>n-1</sub> -X <sub>n+1</sub>	Y	Y-(定数)	Y <sub>n-1</sub> -Y <sub>n+1</sub>	+	-	+	-
Ⅴ	-152000 482.478	-152470 12.478	+6.578	-37000 37.718	-37030 7.718	+10.481			50.769004	130.792399
4	480.526	10.526	-8.531	46.247	16.247	-1.952	138.603157		20.546752	
3	473.948	3.948	+1.953	35.766	5.766	-8.529		11.260998	33.672482	
							138.603157	62.030002	54.219244	130.792399
							76.573155			76.573155
								1/2 = 38.2865775		
Ⅵ	-152000 444.478	-152430 16.478	-10.482	-37000 220.482	-37210 10.482	+6.576	109.872324			95.207328
12	435.949	5.949	+1.953	218.529	8.529	-8.529		16.657137	50.739021	
11	446.431	16.431	+8.529	211.953	1.953	+1.953		16.657137	32.089743	
							109.872324	33.314274	50.739021	117.297071
							76.558050			76.558050
								1/2 = 38.279025		

面積計算書

工区

3

ブロック

21 4#

計算者



精算者



備考

(IV)

点	①	②	③	④	⑤	⑥	③ × ⑤	② × ⑥
	X	X-(定数)	X <sub>n-1</sub> -X <sub>n+1</sub>	Y	Y-(定数)	Y <sub>n-1</sub> -Y <sub>n+1</sub>	+ -	+ -
IV	-152000 376.268	-152370 6.268	-2.254	-37000 204.867	-37200 4.867	-3.593	10.970218	22.520924
15	376.937	6.937	+2.923	201.943	1.943	+0.669	5.679389	4.640853
14	379.191	9.191	-0.669	205.536	5.536	+2.924	3.703584	26.874484
							14.673902	31.515337
							8.994413	8.994413
								1/2 = 4.4972065

計年  
月  
算日

計  
算  
者



檢  
查  
者



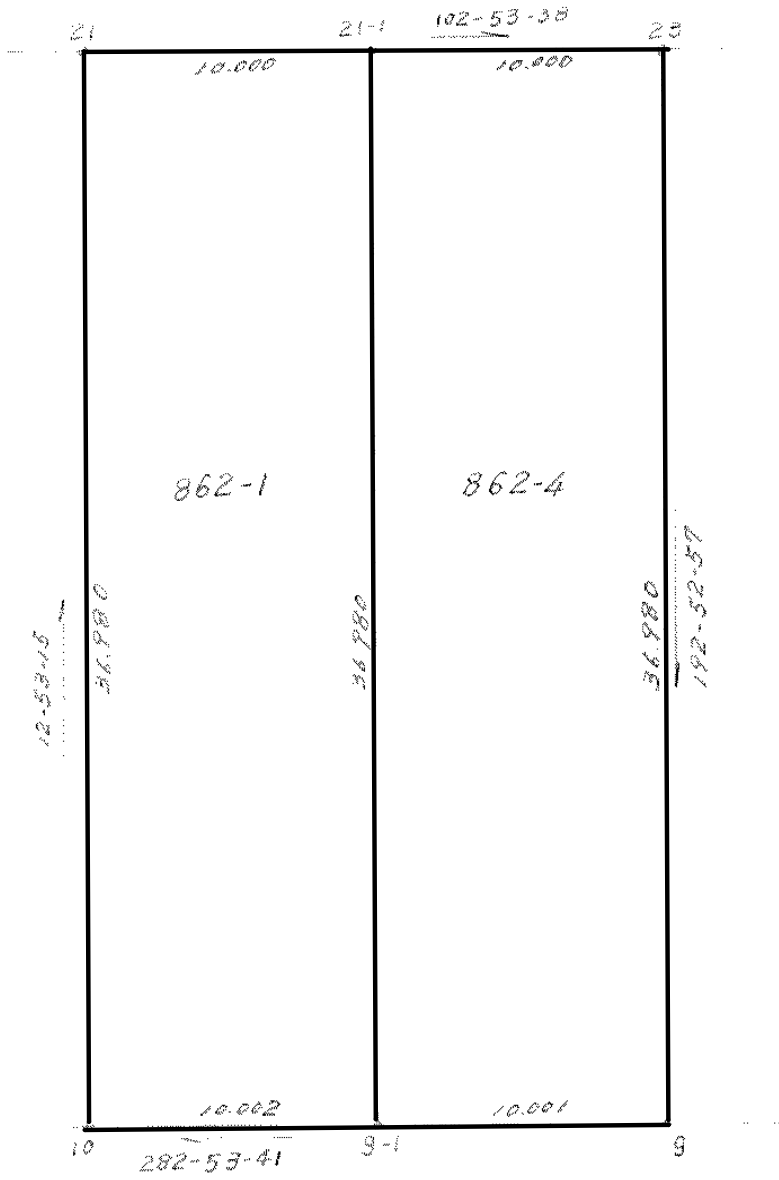
B. NO. <sup>21</sup>~~55~~

各筆面積計算書

地番	算式	隅切	地積	摘要
	豊成 371 (D)		1,039.17	
	豊成 371 (A)		1,013.04	
	豊成 370 (A)		912.37	
	福富 416の3 (D)		1,663.54	
	青江 860の1 (A)		675.27	
	青江 861の1 (A)		699.38	
	青江 862の1 (A)		739.68	
	青江 864の1 (A)		701.36	
	青江 856 (A)		1,214.77	
	米(俵) 3~21~1		529.56	
	豊成 369の2		1,074.41	
	豊成 369の1 (A)		697.64	
	豊成 370 (D)		1,593.93	
	計		12,554.12	
	全体		12,554.16	
			差 -0.04	
	換地		12,024.56	
	米保留地		529.56	

青丘

S = 1:300





NO.	NAME	CODE	X	Y	D X	D Y	X * DY	Y * DX
1	9-1		-152451.175	-37191.233	33.818	17.996	-2743511.345300	-1257733.117594
2	10		-152448.943	-37200.983	-38.281	1.502	-228978.312386	1424090.830223
3	21		-152412.894	-37192.735	-33.818	-17.996	2742822.440424	1257783.912230
4	21-1		-152415.125	-37182.987	38.281	-1.502	228927.517750	-1423401.925347

コウケイ	-739.699512	739.699512
ハイメンセキ	739.699512	
メンセキ	369.849756	862-1
ツボスウ	111.879551	

青江862-4

NO.	NAME	CODE	X	Y	D X	D Y	X * DY	Y * DX
1	9		-152453.407	-37181.484	33.818	17.994	-2743246.605558	-1257403.425912
2	9-1		-152451.175	-37191.233	-38.282	1.503	-229134.116025	1423754.781706
3	21-1		-152415.125	-37182.987	-33.818	-17.994	2742557.759250	1257454.254366
4	23		-152417.357	-37173.239	38.282	-1.503	229083.287571	-1423065.935398

コウケイ -739.674762 739.674762

ハイ メンセキ 739.674762

メンセキ 369.837381

ツボスウ 111.875807

862-4  
 ↓  
 369.84 m<sup>2</sup>

