

BLOCK NO. 15

街区計算

街区略図

工区

3

ブロック

15

記入者



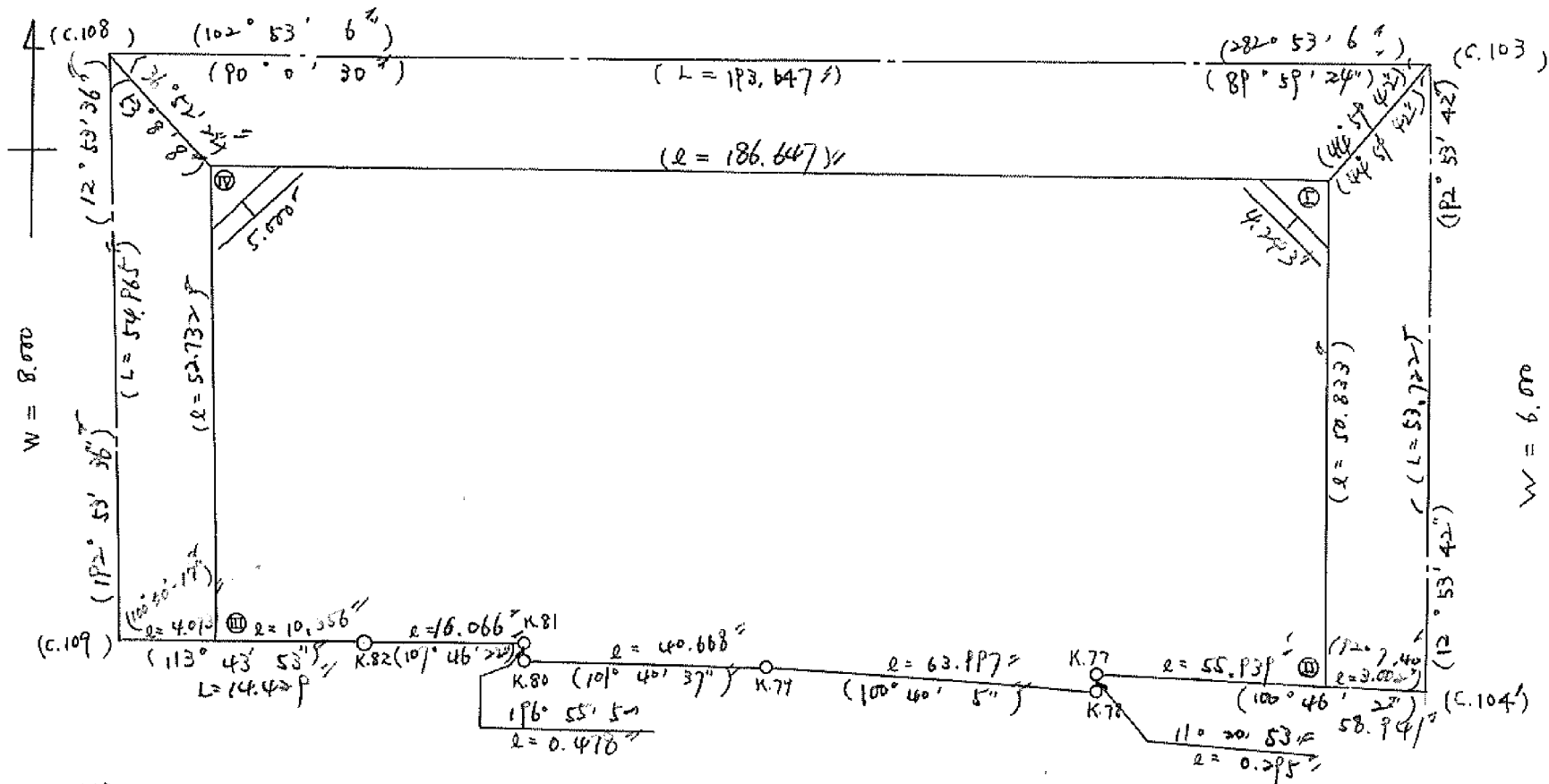
点検者



$X = -152,761.528$
 $Y = -37,297.160$

$W = 6.000$

$X = -152,804.710$
 $Y = -37,108.388$

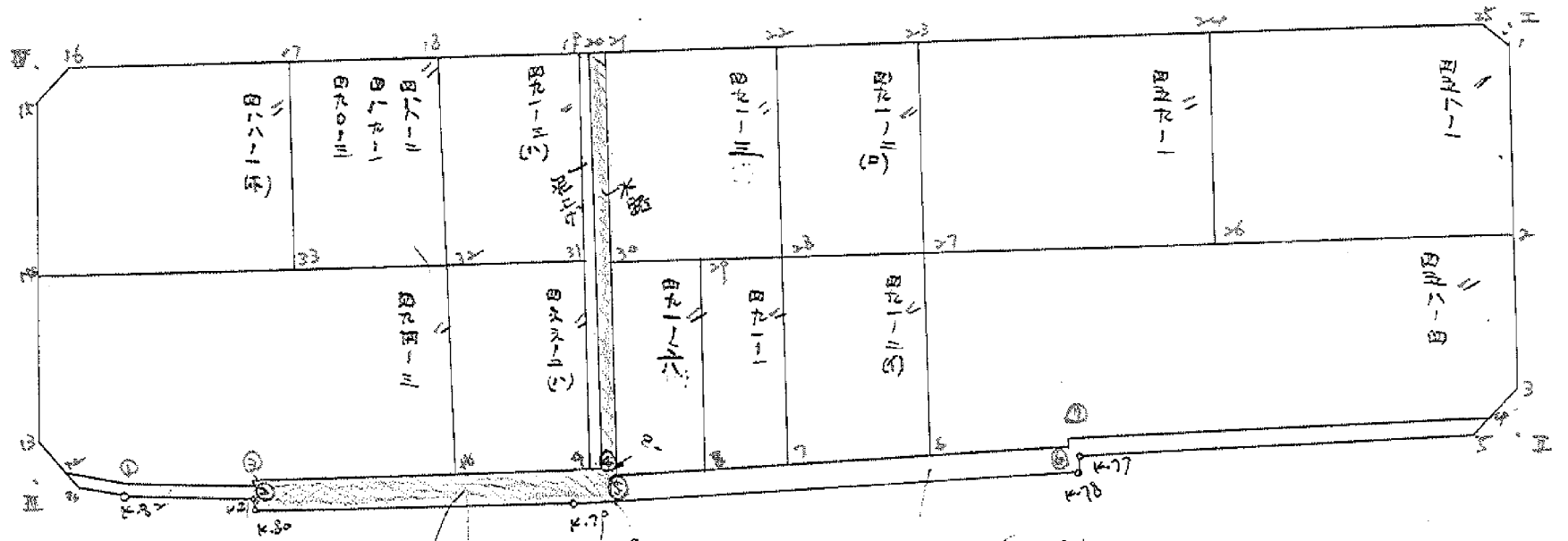


$X = -152,815.109$
 $Y = -37,309.425$

$X = -152,857.077$
 $Y = -37,120.377$

算 計 地 画

3.11.15 BNO. 15



正統 2015年

2015年 1800

11月 25日

何の用で...

面積計算書

工区

3

ブロック

15

計算者



精算者



備考

豊成 458-1
" 459-1

点	①	②	③	④	⑤	⑥	③ × ⑤	② × ⑥
	X	X-(定数)	X _{n-1} -X _{n+1}	Y	Y-(定数)	Y _{n-1} -Y _{n+1}	+	-
1	-152,809.889	19.888	+ 26.504	-37,112.651	2.651	+ 2.990	70.262104	59.465120
2	-152,832.800	42.800	+ 14.471	-37,117.897	7.897	+ 42.298	113.961607	1810.354400
26	-152,824.319	34.319	- 34.308	-37,154.949	44.949	+ 31.127	1542.110292	1068.247513
24	-152,798.492	8.492	- 18.023	-37,149.024	39.024	- 40.042	703.329552	340.036664
25	-152,806.296	16.296	+ 11.396	-37,114.907	4.907	- 36.373	55.920172	592.734408
							240.143885	2245.439264
							2005.295961	932.771072
								22938.067033
								2005.295961
							1/2 =	1002.647980
24	-152,798.492	8.492	+ 34.101	-37,149.024	9.024	- 30.245	307.727424	256.840340
26	-152,824.319	34.319	+ 17.549	-37,154.949	14.949	+ 42.090	262.340001	1444.486710
27	-152,816.041	26.041	- 34.101	-37,191.114	51.114	+ 30.245	1743.038514	1787.610045
23	-152,790.218	0.218	- 17.549	-37,184.194	48.194	- 42.090	793.109506	9.175620
							2536.148020	570.067425
							1966.080595	266.016160
								2232.096755
							1/2 =	983.040297

座標法面積計算 (A)

458-12

測點	X	Δx	Y	Δy	(+) F_1 $\Delta x \cdot \Delta y$	(-) F_2 $\Delta x \cdot \Delta y$	
			(-120)				
24	798.492		149.024				
		-1.226		12.686		15.553036	
24'	799.718		143.662				
		-25.828		13.249		342.195172	
26'	825.546		149.589				
		+1.227		24.536	30.105672		
26	824.319		154.949				
		+25.827		23.973	619.150671		
24	798.492		149.024				
					$\bar{Z} =$	649.256343	357.748208
					$F = (F_1) \sim (F_2) =$		291.508135
計算者					$F / 2 =$		145.7540675
点検者					$\times 0.3025 =$		

面積計算書

工区 3

ブロック 15

計測者



縮尺者

備考

豊成 448-4

点	①	②	③	④	⑤	⑥	③	×	⑤	②	×	⑥
	X	X-(定数)	X _{n-1} -X _{n+1}	Y	Y-(定数)	Y _{n-1} -Y _{n+1}	+		-	+		-
2	-152.832.800	^{-152.900} 32.200	+37.551	-37.117.897	^{-37.100} 17.897	- 68.457			672.050247	2245.389600		
3	-152.853.592	53.592	+ 22.762	-37.122.657	22.657	+ 7.773			515.718634			416.570616
4	-152.855.562	55.562	- 8.109	-37.125.670	25.670	+ 56.014	208.158030					312.249868
⑦	-152.845.483	45.483	- 9.770	-37.178.671	78.671	+ 53.060	770.189090					2413.327920
⑧	-152.845.772	45.772	- 3.178	-37.178.730	78.730	+ 18.463	250.203940					845.028436
6	-152.842.305	42.305	- 29.731	-37.197.134	97.134	+ 12.384	2887.890954					523.905120
27	-152.816.041	16.041	- 9.505	-37.191.114	91.114	- 79.237	866.038570			1271.040717		
									4982.420584	1187.768881	3516.430317	7311.142029
									3794.711703			3794.711703
									¹ / ₂ = 1897.3558515			

分筆後一部資料なし

面積計算書

工区

3

ブロック

15

計算者



精算者

備考

豊成 491-3 4)
" 488-2
" 489-1 490-3

点	①	②	③	④	⑤	⑥	③ × ⑤		② × ⑥	
	X	X-(定数)	X _{n-1} -X _{n+1}	Y	Y-(定数)	Y _{n-1} -Y _{n+1}	+	-	+	-
19	-152,780.847	-152,770 10.847	+30.024	-37,226.181	-37,220 6.181	-10.249		185.578 364		111.119 658
31	-152,807.142	37.142	+22.480	-37,232.213	12.213	+22.314		275.769 540		828.823 730
32	-152,803.422	33.422	-30.024	-37,248.496	28.496	+10.249	855.563 904			342.542 078
18	-152,777.118	7.118	-22.480	-37,242.462	22.462	-22.315	507.191 960		158.838 170	
							1362.755 864	461.347 884	269.957 828	1172.365 808
							901.407 980			804.407 980
									1/2 = 450.703 990	
18	-152,777.118	-152,770 7.118	+30.564	-37,242.462	-37,240 2.462	-12.588		75.248 568		89.601 384
32	-152,803.422	33.422	+22.050	-37,248.496	8.496	+24.659		187.336 800		824.163 098
33	-152,799.168	29.168	-30.564	-37,267.121	27.121	+12.588	828.926 244			367.166 784
17	-152,772.858	7.858	-22.050	-37,261.084	21.084	-24.659	464.902 200		70.475 422	
							1293.828 044	262.585 368	160.076 806	1191.319 882
							1031.243 076			1031.243 076
									1/2 = 515.621 538	

面積計算書

工区

3

ブロック

15

計算者



精算者

備考

集成 491-6)
" 466-2 (ト)

点	①	②	③	④	⑤	⑥	③ × ⑤	② × ⑥
	X	X-(定数)	X _{n-1} -X _{n+1}	Y	Y-(定数)	Y _{n-1} -Y _{n+1}	+ -	+ -
29	-152,809.571	-152,800 9.571	+ 29.717	-37,219.378	-37,200 19.378	- 4.020	575.856026	38.475420
8	-152,836.936	36.936	+ 25.411	-37,225.633	25.633	+ 16.631	651.360163	614.287616
④	-152,834.982	34.982	- 29.717	-37,236.009	36.009	+ 4.020	1070.079453	140.677640
30	-152,802.219	7.219	- 25.411	-37,229.643	29.643	- 16.631	753.512383	120.059189
							1823.591836	1227.216189
							596.375647	588.534609
								754.910256
								596.375647
								1/2 = 298.1878235
							変更後の資料なし	
31	-152,807.142	-152,800 7.142	+ 30.149	-37,232.213	-37,230 2.213	- 10.227	66.719737	73.005524
9	-152,833.571	33.571	+ 23.062	-37,238.274	8.274	+ 22.431	180.814988	753.035101
10	-152,830.206	30.206	- 30.149	-37,244.644	24.644	+ 10.227	742.991956	308.745288
32	-152,803.422	3.422	- 23.062	-37,248.496	18.496	- 22.431	426.554752	76.758882
							1169.546708	757.534725
							912.011983	149.764606
								1084.776389
								912.011983
								1/2 = 456.0059915

面積計算書

工区

3

ブロック

15

計算者



精算者



備考

量成 491-2 (0)
" 491-3 (0)

点	①	②	③	④	⑤	⑥	③ × ⑤		② × ⑥	
	X	X-(定数)	X _{n-1} -X _{n+1}	Y	Y-(定数)	Y _{n-1} -Y _{n+1}	+	-	+	-
23	-152,790.218	-152,780 10.218	+ 29.882	-37,185.194	-37,180 5.194	-11.824	155.207108		120.817632	
27	-152,816.041	36.041	+ 21.763	-37,191.114	11.114	+ 23.656	241.873982		852.585896	
28	-152,811.921	21.921	- 29.882	-37,208.850	28.850	+ 11.824	862.095700		378.143344	
22	-152,786.159	6.159	- 21.763	-37,202.938	22.938	- 23.656	499.199694		145.697304	
							1361.295394	397.081090	266.514936	1220.729240
							964.214304		964.214304	
							1/2 = 482.107152			
22	-152,786.159	-152,780 6.159	+ 30.581	-37,202.938	-37,200 2.938	- 14.893	89.846978		91.725987	
28	-152,811.921	31.921	+ 21.060	-37,208.850	8.850	+ 26.715	186.381000		854.372445	
30	-152,807.219	27.219	- 30.581	-37,229.653	29.653	+ 14.893	906.818393		405.372667	
21	-152,781.400	1.400	- 21.060	-37,223.743	23.743	- 26.715	500.0275805		37.401000	
							1406.845973	276.227978	129.126987	1259.744982
							1130.617995		1130.617995	
							1/2 = 565.3089975			

変更後の資料なし

面積計算書		工区	3	ブロック	15	計算者	精算者	備考	豊成 491-26)	
点	①	②	③	④	⑤	⑥	③ × ⑤	② × ⑥		
	X	X-(定数)	X _{n-1} -X _{n+1}	Y	Y-(定数)	Y _{n-1} -Y _{n+1}	+	-	+	-
27	-152,816.041	-152.800 16.041	+30.324	-37,191.114	-37.150 41.114	-11.716	1246.740936		187.936356	
6	-152,842.305	42.305	+22.894	-37,197.134	47.134	+23.908	1079.085796		1011.427946	
7	-152,838.935	38.935	-30.324	-37,215.022	65.022	+11.716	1971.727128		456.162460	
28	-152,811.981	11.981	-22.894	-37,208.250	58.850	-23.908	1347.311900		286.441748	
							3319.039028	2325.82672474	3781041467.590400	
							993.212296		993.212296	
							1/2 = 496.606148			
28	-152,811.981	-152.800 11.981	+29.364	-37,208.250	-37.200 8.850	-4.356	259.871400		52.189236	
7	-152,838.935	38.935	+24.955	-37,215.022	15.022	+16.783	374.874010		653.446105	
8	-152,836.936	36.936	-29.364	-37,225.633	25.633	+4.356	752.687412		160.893216	
29	-152,809.471	9.571	-24.955	-37,219.378	19.378	-16.783	483.577990		160.630093	
							1236.263402634	745410	212.919329	814.339321
							601.519992		601.519992	
							1/2 = 300.759996			

変更後の資料なし

面積計算書

工区

3

ブロック

15

計算者



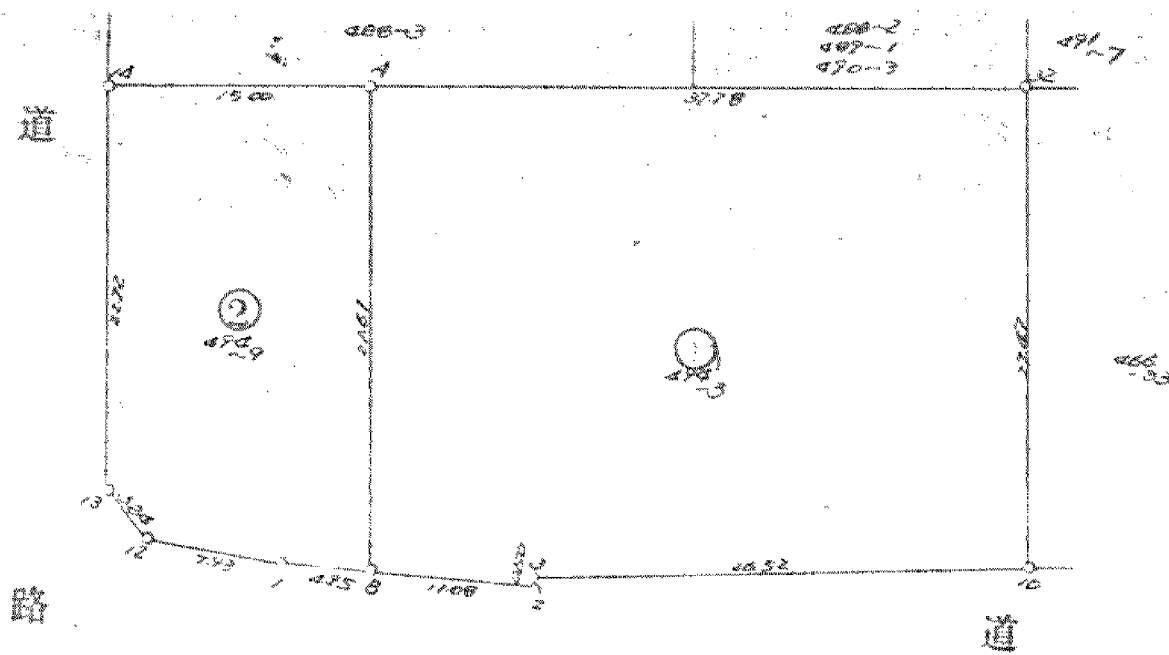
精算者



備考

豊成 494-3

点	①	②	③	④	⑤	⑥	③ × ⑤		② × ⑥	
	X	X-(定数)	X _{n-1} -X _{n+1}	Y	Y-(定数)	Y _{n-1} -Y _{n+1}	+	-	+ -	
37	152,803.422	-152,750 = 53.422	+ 38.537	-37,248.496	-37,200 = 48.496	- 45.311			1868.890352	2420.604242
10	152,830.204	80.204	+ 21.440	-37,254.644	54.644	+ 32.129			1171.567360	2576.874316
⑨	152,824.862	74.862	- 4.862	-37,280.625	80.625	+ 26.127	391.998750			1955.919474
⑧	152,825.342	75.342	- 4.414	-37,280.771	80.771	+ 15.414	356.523194			1161.321588
⑦	152,820.448	70.448	- 8.087	-37,296.039	96.039	+ 22.531	776.667393			1587.263888
12	152,817.255	67.255	- 6.624	-37,303.302	103.302	+ 8.987	684.272448			604.420685
13	152,813.824	63.824	- 25.588	-37,305.826	105.026	- 3.347	2687.405288			213.618928
14	152,791.667	41.667	- 10.402	-37,299.955	99.955	- 56.530	1039.731910			2255.435510
							4936.598983			3040.457712
							2896.141271			4989.658680
										7885.799951
										2896.141271
										1/2 = 1448.0706355



豊成

② 490-9

測点	X 座標	Y 座標	緯度 (d°)	経度 (d')	合緯座標 (m)	合経座標 (m)	$y_{n+1} - y_n$	$x(y_{n+1} - y_n)$
A	-152.795007	-37.285331	0	0	0	0	-8.630	0
B	821.959	291.325	26.952	5.994	26.952	5.994	10.708	288.602016
1	820.448	296.037	-1.511	0.714	25.441	10.708	11.977	304.706857
12	817.255	303.302	-3.193	7.263	22.248	17.971	8.987	199.942776
13	813.824	305.026	-3.431	1.724	18.817	19.695	-3.307	-62.980499
14	791.667	299.955	-22.157	-5.071	-3.340	14.624	-7.695	65.781300
			3.340	-4.624			計	796.052450
							1/2	398.026225
							地積	398.02m ²

分筆あり

① 490-3

測点	X 座標	Y 座標	緯度 (d°)	経度 (d')	合緯座標 (m)	合経座標 (m)	$y_{n+1} - y_n$	$x(y_{n+1} - y_n)$
A	-152.795007	-37.285331	0	0	0	0	-42.829	0
32	823.422	248.496	8.415	-36.835	8.415	-36.835	-30.687	-258.231105
10	830.204	254.644	26.782	6.148	35.197	-30.687	32.129	1130.644413
3	824.862	280.625	-5.342	25.981	29.855	-4.706	26.127	780.021585
2	825.342	280.771	0.480	0.146	30.335	-4.560	10.700	324.584500
B	821.959	291.325	-3.383	10.554	26.952	5.994	4.560	122.901120
			-26.952	-5.994			計	2100.120513
							1/2	1050.0602565
							地積	1050.06m ²

分筆後の座標なし

計 1050.06m²

面積計算書

工区

3

ブロック

15

計算者



精算者

備考

水路

点	①	②	③	④	⑤	⑥	③ × ⑤		② × ⑥	
	X	X-(定数)	X _{n-1} -X _{n+1}	Y	Y-(定数)	Y _{n-1} -Y _{n+1}	+	-	+	-
4	-152,845.562	<u>-152.750</u> 105.562	-10.473	-37,125.670	<u>-37.100</u> 25.670	+52.398	268.841910			5531.237676
②	-152,845.483	95.483	-9.790	-37,178.671	78.671	+53.060	770.189090			5066.327980
⑥	-152,845.772	95.772	-10.501	-37,178.730	78.730	+57.338	826.743730			5491.374936
⑨	-152,834.982	84.982	-64.372	-37,236.009	136.009	+43.013	8755.171348			3825.294766
21	-152,781.400	31.400	-53.917	-37,223.743	123.743	-10.803	6671.851331		339.214200	
20	-152,781.065	31.065	+52.372	-37,224.206	125.206	+13.351		6557.288632		420.961815
⑭	-152,833.772	83.772	+43.797	-37,237.294	137.294	+55.419		6013.065318		4642.560468
⑬	-152,824.862	74.862	-8.430	-37,280.625	180.625	+43.477	1522.668750			3254.775174
⑯	-152,825.342	75.342	-4.414	-37,280.771	180.771	+15.414	797.923194			1161.321588
⑰	-152,820.448	70.448	-8.087	-37,296.029	196.039	+22.531	1385.367393			1587.263888
12	-152,817.255	67.255	-2.493	-37,303.302	203.302	+6.911	506.831886			464.799305
11	-152,817.955	67.955	+3.661	-37,302.950	202.950	-7.086		742.999950	481.529130	
K82	-152,820.916	70.916	+7.865	-37,296.216	196.216	-22.033		1543.238840	1562.492228	
K81	-152,825.820	75.820	+5.361	-37,280.917	180.917	-15.160		969.896037	1149.431200	
K80	-152,826.277	76.277	+8.688	-37,281.056	181.056	-39.688		1573.014528	3027.281576	
K79	-152,834.508	84.508	+20.078	-37,241.229	141.229	-102.718		2835.595862	8680.492744	
K78	-152,846.355	96.355	+11.558	-37,178.338	78.338	-62.949		905.430604	6065.450895	

面積計算書

工
区

3

ブ
ロ
ック

15

計
算
者



精
算
者



備
考

水路
豊成 488-1 (ホ)

点	①	②	③	④	⑤	⑥	③ × ⑤		② × ⑥	
	X	X-(定数)	X _{n-1} -X _{n+1}	Y	Y-(定数)	Y _{n-1} -Y _{n+1}	+	-	+	-
K77	-152,846.066	-152.750 96.066	+ 9.601	-37,178.290	-37.100 78.280	- 32.065			751.566280	5001.676290
5	-152,845.946	105.956	+ 9.496	-37,126.273	26.273	- 32.610			249.488408	5574.345160
									21705.588632	22141.584459
									31881.913423	31445917576
									435.995827	435.995827
									1/2 = 217.9979135	
17	-152,772.848	-152.750 22.858	+ 33.754	-37,261.084	-37.250 11.084	- 23.885			367.478936	545.963330
33	-152,799.168	49.168	+ 18.809	-37,267.121	17.121	+ 38.871			322.028889	1911.209328
14	-152,791.667	41.667	- 30.899	-37,299.945	49.955	+ 27.478	1543.559545			1144.925826
15	-152,768.269	18.269	- 25.653	-37,294.599	44.599	- 8.949	1144.098147			163.489281
16	-152,766.014	16.014	+ 4.589	-37,291.006	41.006	- 33.315			188.176534	536.709210
									2687.651692	877.684359
									7246.161821	3456.135154
									1809.973333	1809.973333
									1/2 = 904.9866665	

面積計算書

工区

3

ブロック

15

計算者



算定者

備考

~~豊成 453-7~~
泥大IT

点	①	②	③	④	⑤	⑥	③ × ⑤		② × ⑥		
	X	X-(定数)	X _{n-1} -X _{n+1}	Y	Y-(定数)	Y _{n-1} -Y _{n+1}	+	-	+	-	
2	-152.832.800	-152.800 32.800	+ 37.554	-37.117.897	37.100 17.897	- 68.457		672.050247	2245.389600		
3	-152.853.592	53.592	+ 0.972	-37.122.657	22.657	+ 19.397		22.022604		1039.524024	
④	-152.833.772	33.772	- 8.109	-37.237.294	37.294	+ 36.014	302.417046			1891.704808	
⑦	-152.845.483	45.483	+ 12.000	-37.178.671	78.671	+ 41.436		944.052000		1884.633588	
⑧	-152.845.772	45.772	- 3.178	-37.178.730	78.730	+ 18.463	250.203940			845.088436	
6	-152.842.305	42.305	- 29.731	-37.197.134	97.134	+ 13.384	2227.890954			523.905120	
27	-152.816.041	16.041	- 9.505	-37.191.114	91.114	- 79.237	866.032570		1271.040717		
			30.000					4306.550510	1638.124851	3516.430317	6184255976
								2668.428659			2668.425659
								$\frac{1}{2} = 1334.2128295$			
20	-152.781.065	-152.750 31.065	+ 52.930	-37.225.206	-37.200 25.206	+ 11.113		1334.153580		345.225745	
⑨	-152.833.772	83.772	+ 52.506	-37.237.294	37.294	+ 13.068		1958.152764		1094.732496	
9	-152.833.571	83.571	- 52.930	-37.238.274	38.274	- 11.113	2025.842820		928.724523		
19	-152.780.842	30.842	- 52.506	-37.226.181	26.181	- 13.068	1374.659586		403.043256		
								3400.502406	3292.312344	1331.767779	1439.957841
								108.190062			108.190062
								$\frac{1}{2} = 54.095031$			

面積計算書

工区

3

ブロック

15

計算者



新算者

備考

隅切 1.
隅切 2.

点	①	②	③	④	⑤	⑥	③	×	⑤	②	×	⑥
	X	X-(定数)	X _{n-1} -X _{n+1}	Y	Y-(定数)	Y _{n-1} -Y _{n+1}	+		-	+		-
I	-152,806.965	-152,806 0.965	+ 3.493	-37,111.987	-37,111 0.987	- 2.256			3.528326	2.177040		
1	-152,809.889	3.889	- 0.669	-37,112.651	1.651	+ 2.925	1.104519					11.375325
2	-152,806.296	0.296	- 2.924	-37,114.907	3.907	- 0.669	11.424068			0.198024		
							12.528587		3.528326	2.375064		11.375325
							9.000261			9.000261		
							1/2 = 4.500130					
II	-152,856.516	-152,853 3.516	+ 2.364	-37,123.326	-37,122 1.326	+ 3.616			3.134664	12.713856		
4	-152,855.956	2.956	- 2.924	-37,126.273	4.273	- 0.669	12.494252			1.977564		
3	-152,853.592	0.592	+ 0.560	-37,122.657	0.657	- 2.947			0.367920	1.744624		
							12.494252		3.502584	3.722188		12.713856
							8.991668			8.991668		
							1/2 = 4.495834					

面積計算書		工区	3	ブロック	15	計算者	精算者	備考	陽切 3.	陽切 4.
点	①	②	③	④	⑤	⑥	③ × ⑤	② × ⑥		
	X	X-(定数)	X _{n-1} -X _{n+1}	Y	Y-(定数)	Y _{n-1} -Y _{n+1}	+	-	+	-
Ⅱ	-152,816.748	$\frac{-152,813}{3.748}$	- 4.131	-37,305.696	$\frac{-37,302}{3.696}$	+ 2.076	15.268176			7.780848
13	-152,813.824	$\frac{0.824}{1.207}$	+ 1.207	-37,305.026	$\frac{3.026}{-2.746}$	- 2.746		3.652382	2.262704	
11	-152,817.955	$\frac{4.955}{2.924}$	+ 2.924	-37,302.950	$\frac{0.950}{+0.670}$	+ 0.670		2.777800		3.319850
							15.268176	6.430182	2.262704	11.100592
							8.837994		8.837994	
							$\frac{1}{2} = 4.418997$			
Ⅳ	-152,765.345	$\frac{-152,765}{0.345}$	- 2.245	-37,293.930	$\frac{-37,291}{2.930}$	- 3.493	6.607150		1.239585	
16	-152,766.014	$\frac{1.014}{2.924}$	+ 2.924	-37,291.006	$\frac{0.006}{+0.669}$	+ 0.669		0.017544		0.678366
15	-152,769.269	$\frac{3.269}{-0.669}$	- 0.669	-37,294.499	$\frac{3.499}{+2.924}$	+ 2.924	2.407737			9.558556
							9.014881	0.017544	1.239585	10.236922
							8.997337		8.997337	
							$\frac{1}{2} = 4.498668$			

計年
月
算日

計
算
者

檢
查
者

B.NO. 15

各筆面積計算書

地番	算式	隅切	地積	摘要
	豊成 458-1		1002 64%	
	豊成 458-4		1897 35%	
	豊成 459-1		983 04%	
	豊成 491-2 (ロ)		482 10%	
	豊成 491-2 (イ)		496 60%	
	豊成 491-3 (ロ)		565 30%	
	豊成 491-6 (ロ)		298 18%	
	豊成 491-1		300 75%	
	豊成 491-3 (ハ)		450 70%	
	豊成 466-2 (ハ)		456 00%	
	豊成 494-3		1448 07%	
	豊成 488-1 (ホ)		904 98%	
	豊成 488-2	}	515 62%	
	豊成 489-1			
	豊成 490-3			
	水路		150 00	注!!
			217 99	〜新巴西街路
	泥 土 管理道		54 09	公共用回計等
	巴西街路398号		50 15	等188
			11 84	人
計			10073 41%	
全体			10073 55%	
差			0 14%	
	水路		150 00	
			217 99	
	泥 土 管理道		54 09	
	換地		9801 33%	
	巴西街路398号		61 99	

4

816,041
171,114

25,110
102-53-34

832,800
117,877

27

a

b⁽¹⁾

2

12-541-39"
26,945

458-4

458-3

458-11

458-10

3

853,592
122,657

Ⓟ

d

c
(4)

4

Ⓣ

855,562
125,670

874.

842,305
197,134

Ⓣ

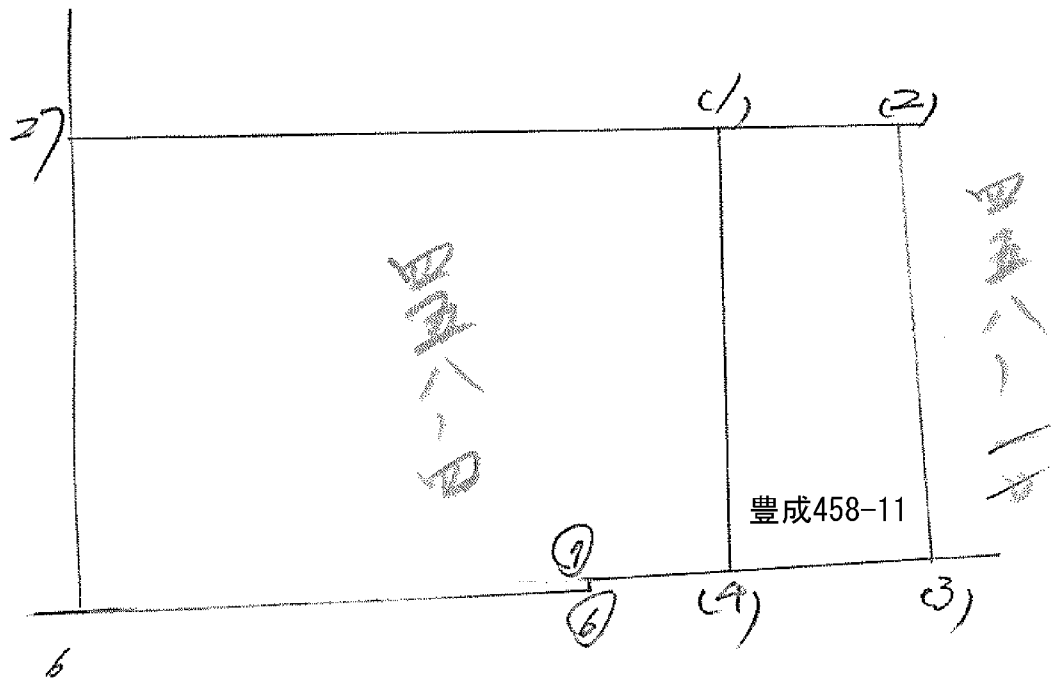
845,483
178,671

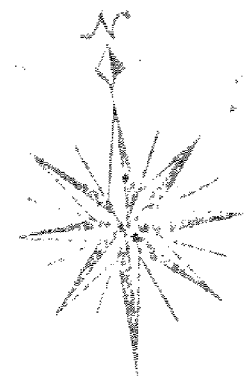
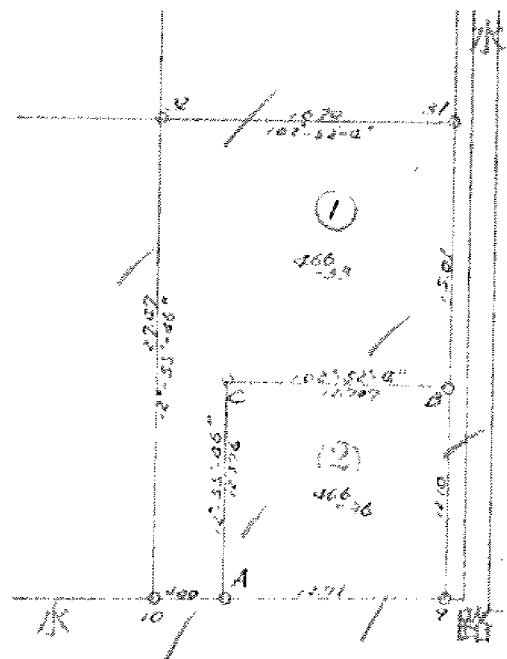
Ⓣ

100-46-2-
53,750

座標法面積計算 (418-) 13.

測点	X	Δx	Y	Δy	(+) F ₁	(-) F ₂
					$\Delta x \cdot \Delta y$	$\Delta x \cdot \Delta y$
a	+ 821.211		+ 165.905			
b	+ 824.319	+ 2508	+ 154.949	+ 220.854	804.701822	
c	+ 848.908	+ 24.589	+ 160.657	+ 315.606	7760.435.934	
d	+ 846.975	- 1.933	+ 170.824	+ 321.481		660.72773
e	+ 821.811	- 25.164	+ 165.905	+ 326.729		8473.447556
-		-	-	-		
-		-	-	-		
-		-	-	-		
-		-	-	-		
-		-	-	-		
-		-	-	-		
-		-	-	-		
$\bar{z} =$					8565.127766	9114.201329
F = (F ₁) ~ (F ₂) =					549.63563	
計算者					F / 2 =	274.521781
点検者					× 0.3025 =	83.04





①
466-33 求 積

點名	X 座標	Y 座標	緯度(dx)	經度(dy)	合註點 統座標(x)	合註點 標座標(y)	$y_{n+1} - y_{n-1}$	$x(y_{n+1} - y_{n-1})$
A	-152.831010	-37.250726	0	0	0	0	0	0
10	830.704	254.604	-0.806	3.918	-0.806	3.918	-2.230	1.797380
32	803.422	248.496	-26.782	-6.148	-27.588	-2.230	-22.431	618.826428
31	807.142	232.213	3.720	-16.283	-23.868	-18.573	-12.927	308.541636
B	821.777	235.569	10.635	3.356	-9.233	-15.157	-15.744	-145.364352
C	818.948	247.957	-2.829	12.388	-12.062	-2.769	15.157	-182.823734
			12.062	2.769				600.977358
							1/2	300.488679
							地 積	300.488679

②
466-36 求 積

點名	X 座標	Y 座標	緯度(dx)	經度(dy)	合註點 統座標	合註點 標座標	$y_{n+1} - y_{n-1}$	$x(y_{n+1} - y_{n-1})$
A	-152.831010	-37.250726	0	0	0	0	0	0
C	818.948	247.957	-12.062	-2.769	-12.062	-2.769	-15.157	182.823734
B	821.777	235.569	2.829	-12.388	-9.233	-15.157	9.683	89.403139
Q	833.571	238.274	11.794	2.705	2.561	-12.452	15.157	38.817077
			-2.561	12.452				311.043950
								155.521975
							地 積	155.521975

計 466.00 m²