

**BLOCK NO. 16**

**街 区 計 算**

街区略図

工区

ウ

ブロック

$\frac{16}{50}$

記入者

点検者



$$X = -152,707.100$$

$$Y = -37,284.702$$

$$W = 6.000$$

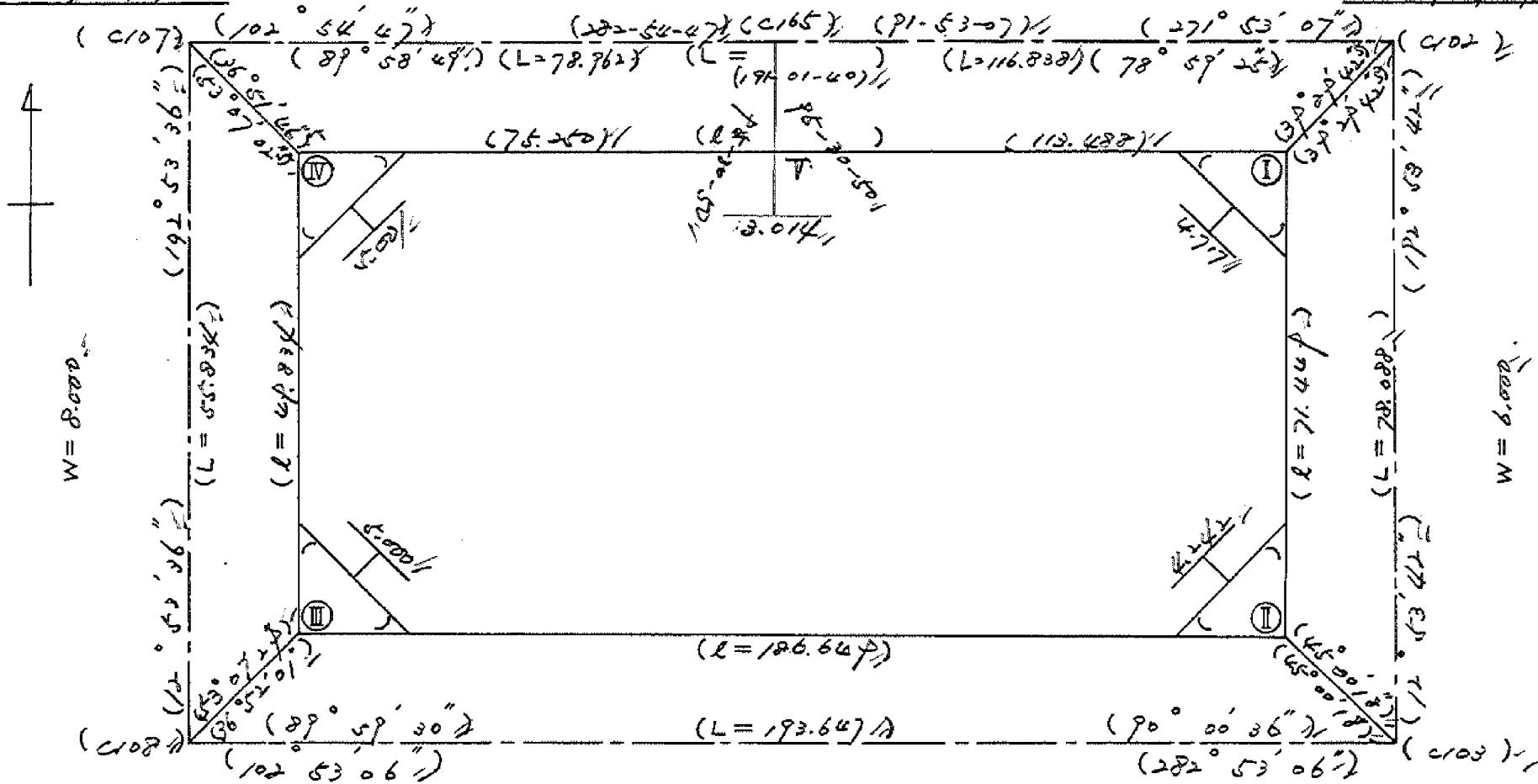
$$X = -152,724.746$$

$$Y = -37,287.737$$

$$W = 6.000$$

$$X = -152,728.590$$

$$Y = -37,090.962$$



$$X = -152,761.528$$

$$Y = -37,297.160$$

$$W = 6.000$$

$$X = -152,804.710$$

$$Y = -37,108.388$$

# 面積計算書

工区

3

ブロック

16  
~~10~~

計算者



精算者



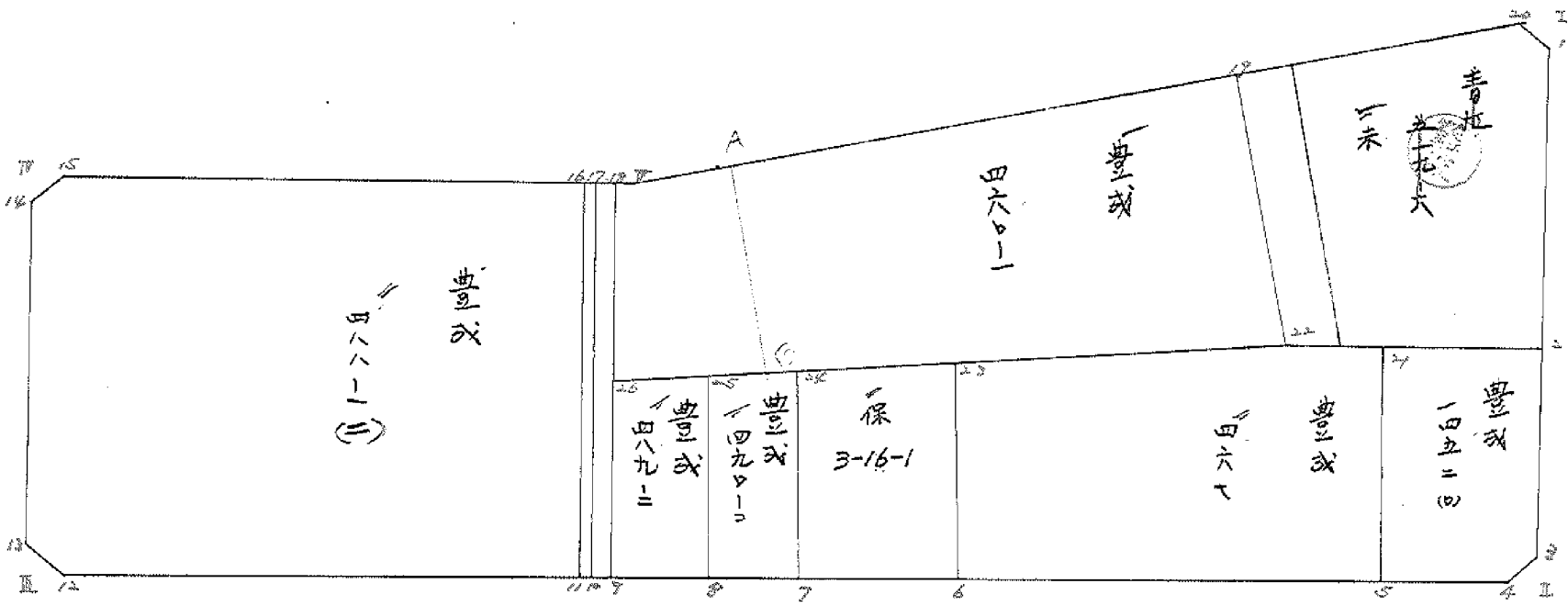
備考

全体

点	①	②	③	④	⑤	⑥	③ × ⑤	② × ⑥
	X	X - (定数)	X <sub>n-1</sub> - X <sub>n+1</sub>	Y	Y - (定数)	Y <sub>n-1</sub> - Y <sub>n+1</sub>	+ -	+ -
I	-152,731.469	<sup>-152,700</sup> 31.469	+ 73.382	-37,094.699	<sup>-37,000</sup> 94.699	- 97.482	6,949,202.018	3,067,661.058
II	-152,801.117	101.117	+ 28.027	-37,110.643	110.643	+ 197.893	3,100,991.361	20,010,344.418
III	-152,759.496	59.496	- 90.199	-37,292.592	292.592	+ 170.829	26,391,505.808	10,163,642.184
IV	-152,710.918	10.918	- 31.761	-37,281.472	281.472	- 84.467	8,938,832.192	922,210.706
V	-152,727.735	27.735	+ 20.551	-37,208.125	208.125	- 186.773	4,299,176.875	5,130,149.155
							35,331,338	14,327,370.254
							21,003,967.746	21,003,967.746
								$\frac{1}{2} = 10,501,983.873$
								$m^2$ $10,501.98 - (4.41 + 4.50 + 4.50 + 4.50) = 10,484.07$

# 圖地計算

870. <sup>16</sup> ~~87~~



077-1

面積計算書

点	①	②	③	④	⑤	⑥	③ × ⑤		② × ⑥	
	X	X-(定数)	X <sub>n-1</sub> -X <sub>n+1</sub>	Y	Y-(定数)	Y <sub>n-1</sub> -Y <sub>n+1</sub>	+	-	+	-
		-152,700			-37,100					
21	-152,767.308	67.308	+ 25.477	-37,122.081	22.081	+ 25.042		562.557637		1,285.526936
5	-152,776.941	96.941	+ 33.140	-37,128.897	28.897	- 8.514		957.646580	825.355674	
4	-152,800.448	100.448	+ 1.252	-37,113.567	13.567	- 18.923		16.985884	1,900.777504	
3	-152,778.193	98.193	- 28.984	-37,104.974	9.974	- 9.712	289.086416		953.650416	
2	-152,771.464	71.464	- 30.885	-37,103.858	3.855	+ 12.107	119.061675			865.214615
							408.148091	1,537.190101	3,619.783594	2,550.741584
								1,129.042010	1,129.042001	
								$\frac{1}{2} = 564.521005$		
		-152,700			-37,000					
2	-152,771.464	71.464	+ 30.403	-37,103.855	103.855	+ 37.732		3,157.503565		2,696.479698
22	-152,764.776	64.776	- 41.222	-37,133.100	133.100	+ 28.108	5,486.648200			1,821.285968
19	-152,730.242	30.242	- 33.426	-37,131.963	131.963	- 35.403	4,410.995238		1,070.657526	
20	-152,731.370	31.370	+ 4.151	-37,097.697	97.697	- 36.595		405.540247	1,147.985150	
1	-152,734.393	34.393	+ 40.094	-37,095.368	95.368	+ 6.158		3,823.684592		211,192.094
							9,897.643438	7,386.728404	2,218.647676	4,729.557710
							2,510.915034			2,510.915034
								$\frac{1}{2} = 1,255.457517$		

分筆あり

面積計算書

工区 ③ ブロック ④ 計測者 精算者 備考 木保 3-16-1 量式 467

点	①	②	③	④	⑤	⑥	③ × ⑤		② × ⑥	
	X	X-(定数)	X <sub>n-1</sub> -X <sub>n+1</sub>	Y	Y-(定数)	Y <sub>n-1</sub> -Y <sub>n+1</sub>	+	-	+	-
24	-152,755.047	-152,700 55.047	+22.759	-37,143.000	-37,100 93.000	+25.069				
7	-152,700.421	80.921	+30.187	-37,142.422	98.932	-12.924				
6	-152,785.234	85.234	-22.759	-37,180.076	80.076	-25.069				
23	-152,758.162	58.162	-30.187	-37,173.263	73.863	+12.924				
							4,052.152065	5,103.047284	3,182.554150	2,131.658931
								1,050.895219	1,050.895219	
									$\frac{1}{2} = 525.4476095$	
23	-152,758.162	-152,700 58.162	+20.438	-37,173.263	-37,100 73.863	+46.976				
6	-152,785.234	85.234	+38.779	-37,180.076	80.076	-44.966				
5	-152,746.441	96.941	-17.926	-37,128.847	28.897	-57.995				
21	-152,767.308	67.308	-32.145	-37,122.081	22.081	+4.203				
22	-152,764.746	64.746	-9.146	-37,183.100	33.100	+51.782				
							1,530.523967	4,614.879198	9,454.725339	6,370.380108
								3,084.34520	3,084.34520	
									$\frac{1}{2} = 4,542.1726155$	

面積計算書		工区	ウ	ブロック	66	計算者	精算者	備考	式	48p-2	49p-2
点	① X	② X-(定数)	③ X <sub>n-1</sub> -X <sub>n+1</sub>	④ Y	⑤ Y-(定数)	⑥ Y <sub>n-1</sub> -Y <sub>n+1</sub>	③ × ⑤ +	③ × ⑤ -	② × ⑥ +	② × ⑥ -	
26	-152,751.165	-152,700 51.165	+ 22.319	-37,216.850	-37,200 16.850	+ 18.248					933,658,920
9	-152,775.546	75.546	+ 27.235	-37,222.428	22.428	- 6.900					521,267,400
8	-152,778.400	78.400	- 22.319	-37,204.950	9.950	- 18.248	222.074050				1,430,643,200
25	-152,753.227	53.227	- 27.235	-37,204.180	4.180	+ 6.900	113,842,300				367,266,300
							335,916,350	986,901,930	1,951,910,600	1,300,925,220	
								650,985,380	650,985,380		
									$\frac{1}{2} = 325,492,690$		
26	-152,753.227	-152,700 53.227	+ 23.353	-37,204.180	-37,100 104.180	+ 16.950					902,197,650
8	-152,778.400	78.400	+ 27.694	-37,204.950	109.950	- 5.248					411,443,200
7	-152,780.921	80.921	- 23.353	-37,198.932	98.982	- 16.950	2,310,358,996				1,371,610,950
24	-152,755.047	55.047	- 27.694	-37,193.000	93.000	+ 5.248	2,575,542,000				288,886,650
							4,885,900,996	5,477,870,840	1,783,054,150	1,191,084,306	
									591,969,844	591,969,844	
									$\frac{1}{2} = 295,984,922$		



面積計算書						工区	ブロック	計算者	精算者	備考	
						3		16		量成 四八八--	
点	①	②	③	④	⑤	⑥	③	⑤	②	⑥	
	X	X-(定数)	X <sub>n-1</sub> -X <sub>n+1</sub>	Y	Y-(定数)	Y <sub>n-1</sub> -Y <sub>n+1</sub>	+	-	+	-	
11	-152,774.787	-152,700 74.987	+ 33.722	-27,224.265	-37,200 24.865	+ 75.909		838.497530		5,697.340001	
12	-152,760.165	60.165	- 18.417	-27,227.662	89.668	+ 67.057	1,651.415556			4,034.484405	
13	-152,756.572	56.572	- 46.322	-27,271.722	91.922	- 7.526	4,258.010884		4,257.608772		
14	-152,713.243	13.843	- 44.984	-27,282.142	82.142	- 13.374	3,695.075728		185.136282		
15	-152,711.588	11.588	+ 12.600	-27,278.542	78.548	- 68.383		989.704800	792.422204		
16	-152,726.443	26.443	+ 63.401	-27,273.757	13.759	- 53.683		872.334359	419.539569		
								9,604,502,168	7,700,536,689	7,822,858,927	9,726,874,406
								6,903,965,479			6,903,965,479
									$\frac{1}{2} = 3,451,982,739.5$		

面積計算書		工区	ウ	ブロック	16 60	計算者	精算者	備考	豊成 460-1	
点	①	②	③	④	⑤	⑥	③ × ⑤	② × ⑥		
	X	X-(定数)	X <sub>n-1</sub> -X <sub>n+1</sub>	Y	Y-(定数)	Y <sub>n-1</sub> -Y <sub>n+1</sub>	+	-	+	-
		-152,700			-37,100					
22	-153,764.776	64,796	-20.723	-37,133.100	33.100	-84.887	697.55/300		5,570.338052	
1A	-153,780.242	30.242	-37.061	-37,101.463	31.963	+75.025	1,184,580,943			2,268,906,050
7	-153,727.735	27.735	-3.240	-37,208.124	108.125	+79.359	350,325,000			2,201,021,865
18	-153,727.002	27.002	+23.430	-37,241.322	111.322	+8.725		2,608,274,460		235,592,450
26	-153,751.165	51.165	+37.794	-37,216.850	116.850	-78.222		4,416,228,900	4,002,228,630	
									2,227,457,043	7,024,503,360
									9,502,566,682	4,705,520,365
									4,799,046,317	4,799,046,317
									1/2 = 2,398,523,158.5	
									分筆後の座標なし	

面積計算書						工区	ブロック	計算者	精算者	備考	小堤水路
順	①	②	③	④	⑤	⑥	③	⑤			
	X	X-(定数)	X <sub>n-1</sub> -X <sub>n+1</sub>	Y	Y-(定数)	Y <sub>n-1</sub> -Y <sub>n+1</sub>	+	-	+	-	
16	-153,726.443	-152,700 26.443	-48.322	-37,213.75	-37,200 13.759	-12.081	664,867,398		319,457,283		
17	-153,726.667	26.667	+48.769	-37,212.784	12.784	+10.131		623,467,896		270,163,377	
10	-153,775.212	75.212	+48.322	-37,223.890	23.890	+12.081		1,154,412,580		908,636,172	
11	-153,774.989	74.989	-48.769	-37,224.865	24.865	-10.131	1,212,641,185		759,713,559		
							1,877,503,583	1,777,875,476	1,079,191,442	1,178,799,547	
							99,628,107			99,628,107	
									$\frac{1}{2} = 49,814,053.5$		
17	-153,726.667	-152,700 26.667	-48.210	-37,212.784	-37,200 12.784	-12.568	616,316,640		335,150,856		
18	-153,727.002	27.002	+48.879	-37,211.322	11.322	+9.644		553,408,038		260,407,288	
9	-153,775.546	75.546	+48.210	-37,222.428	22.428	+12.568		1,081,253,880		949,462,128	
10	-153,775.212	75.212	-48.879	-37,223.890	23.890	-9.644	1,167,719,310		725,344,528		
							1,784,035,950	1,634,661,918	1,060,495,384	1,209,869,416	
							149,374,032			149,374,032	
									$\frac{1}{2} = 74,687,016$		

面積計算書						工 区	3	ブロック	16 50	計算者	精算者	備考	附功
項	①	②	③	④	⑤	⑥	③	×	⑤	②	×	⑥	
	X	X-(定数)	X <sub>n-1</sub> -X <sub>n+1</sub>	Y	Y-(定数)	Y <sub>n-1</sub> -Y <sub>n+1</sub>	+		-	+		-	
		-152,730			-37,090								
I	-152,731.469	1.469	+3.023	-37,094.699	4.699	-2.329			14,205.077	3,421.301			
1	-152,734.393	4.393	-0.099	-37,095.368	5.368	+2.998	0.531432					13,190.214	
2	-152,731.370	1.370	-2.924	-37,097.697	7.697	-0.669	22,506.028			0.916530			
							23,037.460	14,205.077	4,337.831			13,190.214	
							8,832.383					8,832.383	
										$\frac{1}{2} = 4,416.1915$			
3	-152,798.193	98.193	+0.669	-37,104.974	9.974	-2.924			6,672.606	287.116332			
II	-152,801.117	101.117	+2.255	-37,110.643	10.643	+3.593			23,999.965			363.31338	
4	-152,800.448	100.448	-2.924	-37,113.567	13.567	-0.669	39,669.908			67.199712			
							39,669.908	30,672.571	854,316.044			363.31338	
							8,997.337					8,997.337	
										$\frac{1}{2} = 4,498.6685$			

面積計算書						工区	ウ	ブロック	16 50	計算者	精算者	備考
点	①	②	③	④	⑤	⑥	③ × ⑤	② × ⑥				
	X	X-(定数)	X <sub>n-1</sub> -X <sub>n+1</sub>	Y	Y-(定数)	Y <sub>n-1</sub> -Y <sub>n+1</sub>	+	-				
12	-152,760.165	-152,700 60.165	-2.924	-37,284.668	-37,280 9.668	-0.670	28.269232	40.310550				
13	-152,756.572	56.572	-0.669	-37,291.922	11.922	+2.924	7.995818	165.416528				
Ⅲ	-152,754.496	59.496	+3.593	-37,292.592	12.592	-2.254	45.243056	134.103984				
							36.245050	45.243056				
							8.998006	8.998006				
							1/2 = 4.499003					
14	-152,713.843	-152,700 13.843	+0.670	-37,282.142	-37,270 12.142	-2.924	8.135140	40.476932				
15	-152,711.588	21.588	-2.925	-37,278.548	8.548	-0.670	25.002900	7.763960				
Ⅳ	-152,710.918	10.918	+2.255	-37,281.472	11.472	+3.594	25.869360	39.239292				
							25.002900	34.004500				
							9.001600	9.001600				
							1/2 = 4.5008					

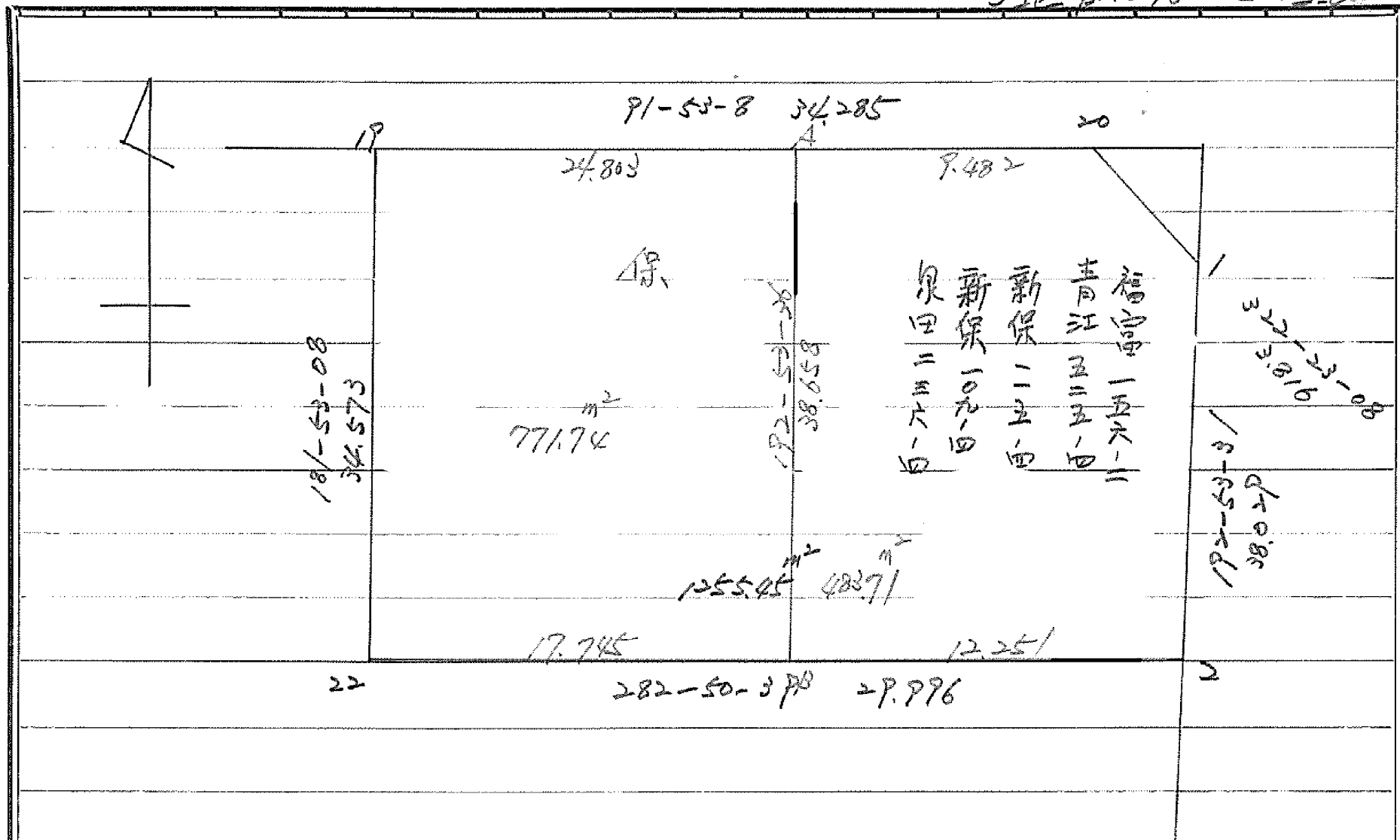
計年 46. 計 檢  
月 9. 算 查  
日 13. 者

B.NO. 16

各筆面積計算書

地番	算式	隅切	地積	摘要
	未指定地		1,255.45	
	豊成 452 (四)		564.52	
	豊成 467		1,542.17	
	保 3-16-1		525.44	
	豊成 490.2		295.98	
	豊成 489.2		325.49	
	豊成 488.1 (二)		3,451.98	
	豊成 460.1		2,398.52	240
	水路		74.68	
	管理道		49.81	
	計		10,484.04	
	全体		10,484.07	
		差	-0.03	
	換地		8,578.66	48.6.29 改正
			<del>9,834.11</del>	
	水路		74.68	
	管理道		49.81	
	保留地		1,780.89	
			<del>525.44</del>	

35区 BHO.16 553.2-8



# 面積計算書

工区

3

ブロック

16

計算者



精算者

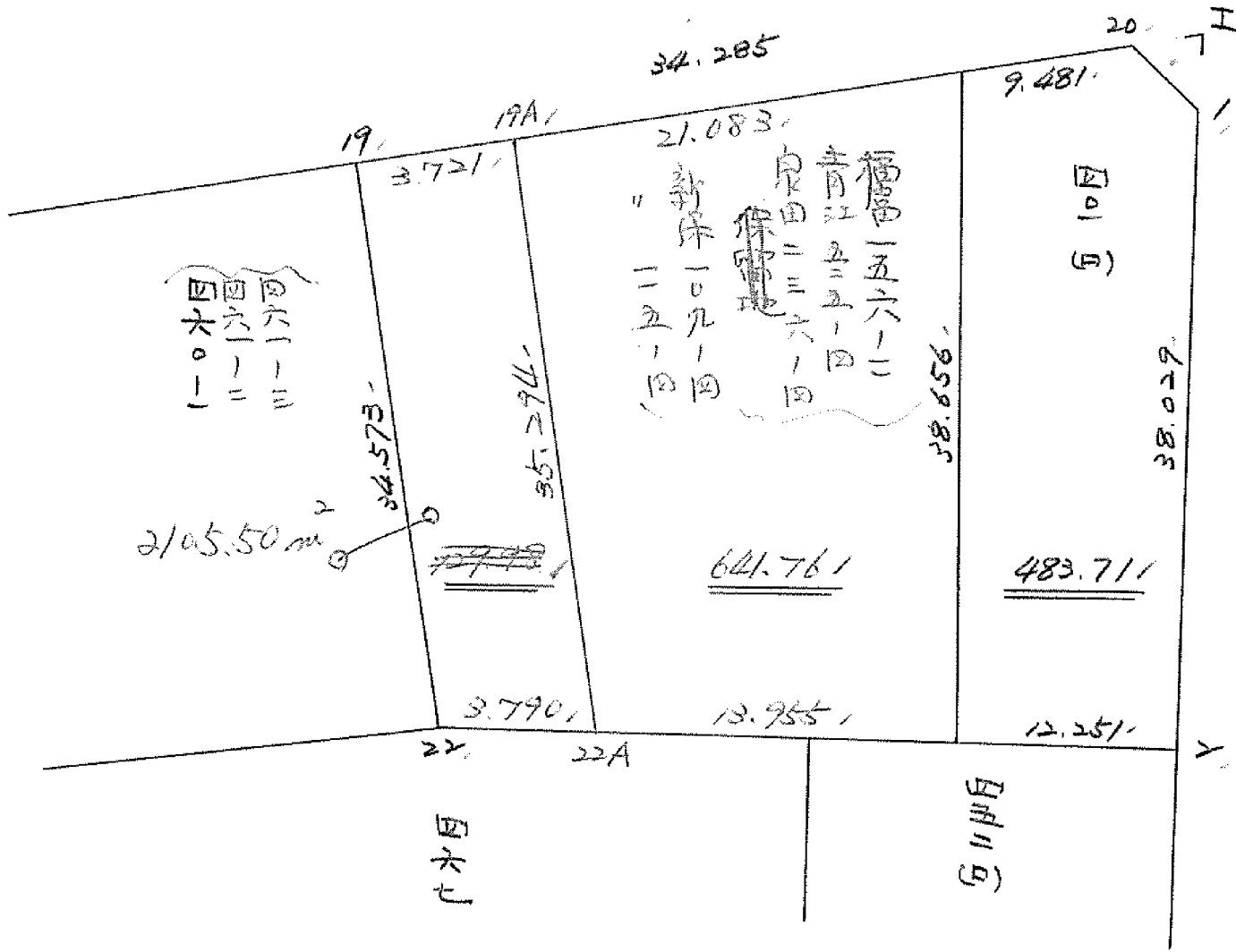
備考

点	①	②	③	④	⑤	⑥	③ × ⑤		② × ⑥		
	X	X - (定数)	X <sub>n-1</sub> - X <sub>n+1</sub>	Y	Y - (定数)	Y <sub>n-1</sub> - Y <sub>n+1</sub>	+	-	+	-	
1	<del>752</del> 734.393	<del>152.730</del> 4.393	+40.094	<del>37.</del> 095.368	<del>37.090</del> 5.368	+6.158					
2	771.464	4.464	+34.348	103.855	13.855	+20.431					
B	768.741	38.741	-40.406	115.799	25.799	+3.318	1042.434394			128.542638	
A	731.058	1.058	-37.371	107.173	17.173	-18.102	64.792183		19.151916		
20	731.370	1.370	+3.335	097.697	7.697	-11.805					
							1884.206577	716.785627	35.324766	1002.945716	
							967.420950			967.420950	
							$\frac{1}{2} = 483.710475$				
B	<del>152</del> 768.741	<del>152.730</del> 38.741	+33.738	<del>37.</del> 115.799	<del>37.100</del> 15.799	+25.927					
22	764.796	34.796	-38.499	133.100	33.100	+16.164	1274.316900			562.442544	
1P	730.242	0.242	-33.738	11.963	31.963	-25.927	1078.367694		6.274334		
A	731.058	1.058	+38.499	107.173	7.173	-16.164					
							276.153327	17.101512			
							2352.684594	809.179989	23.375846	1566.880651	
							1543.504605			1543.504605	
							$\frac{1}{2} = 771.7523025$				
$1255.45 - 483.71 = 771.74$							分筆あり				



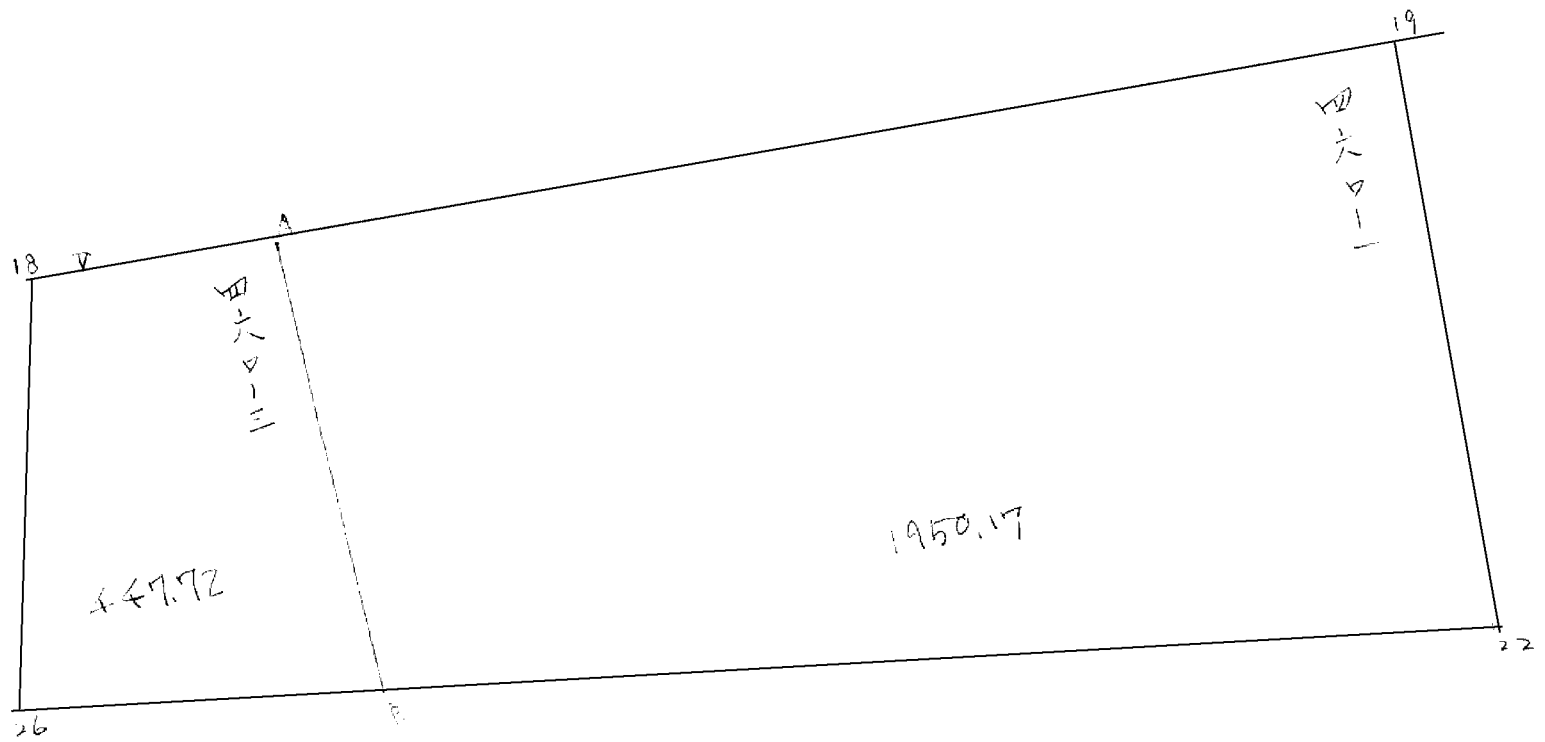


3 区 16 号 7 保留地



19.5.1





# 面積計算書

工区

3

ブロック

16

計算者

精算者

備考

豊 460-1

点	①	②	③	④	⑤	⑥	③ × ⑤		② × ⑥	
	X	X - (定数)	X <sub>n-1</sub> - X <sub>n+1</sub>	Y	Y - (定数)	Y <sub>n-1</sub> - Y <sub>n+1</sub>	+	-	+	-
A	-152 728.110	-152.720 8.110	-24.287	-37. 196.741	-37.170. 66.741					
19	730.242	10.242	+ 36.686	131.963	1.963		92.04618			
22	764.796	44.796	+ 24.287	133.100	3.100		75.287700			
B	754.529	34.529	- 36.686	196.182	66.182					
							47.704318	4068.891519		
								3901.587201		
							1/2 =	1950.79		

# 面積計算書

工区

3

ブロック

16

計算者

精算者

備考

豊 460-3

点	①	②	③	④	⑤	⑥	③ × ⑤		② × ⑥	
	X	X - (定数)	$X_{n-1} - X_{n+1}$	Y	Y - (定数)	$Y_{n-1} - Y_{n+1}$	+	-	+	-
18	-152 727.002	-152.720 7.002	-27.430	-37 211.322	-37.190 21.322					
∩	727.735	7.735	+ 1.108	208.125	18.125		20.082500			
A	728.110	8.110	+ 26.794	196.741	6.741		130.618354			
B	754.529	34.529	+ 23.055	196.182	6.182		142.526010			
26	751.165	31.165	- 27.527	216.850	26.850			739.099950		
							243.226864	1238.674410		
								895.447546		
							$\frac{1}{2} = 447.72$			