

BLOCK NO. 17

街 区 計 算

街区略図

工区

ω

ブロック

17

記入者

点検者



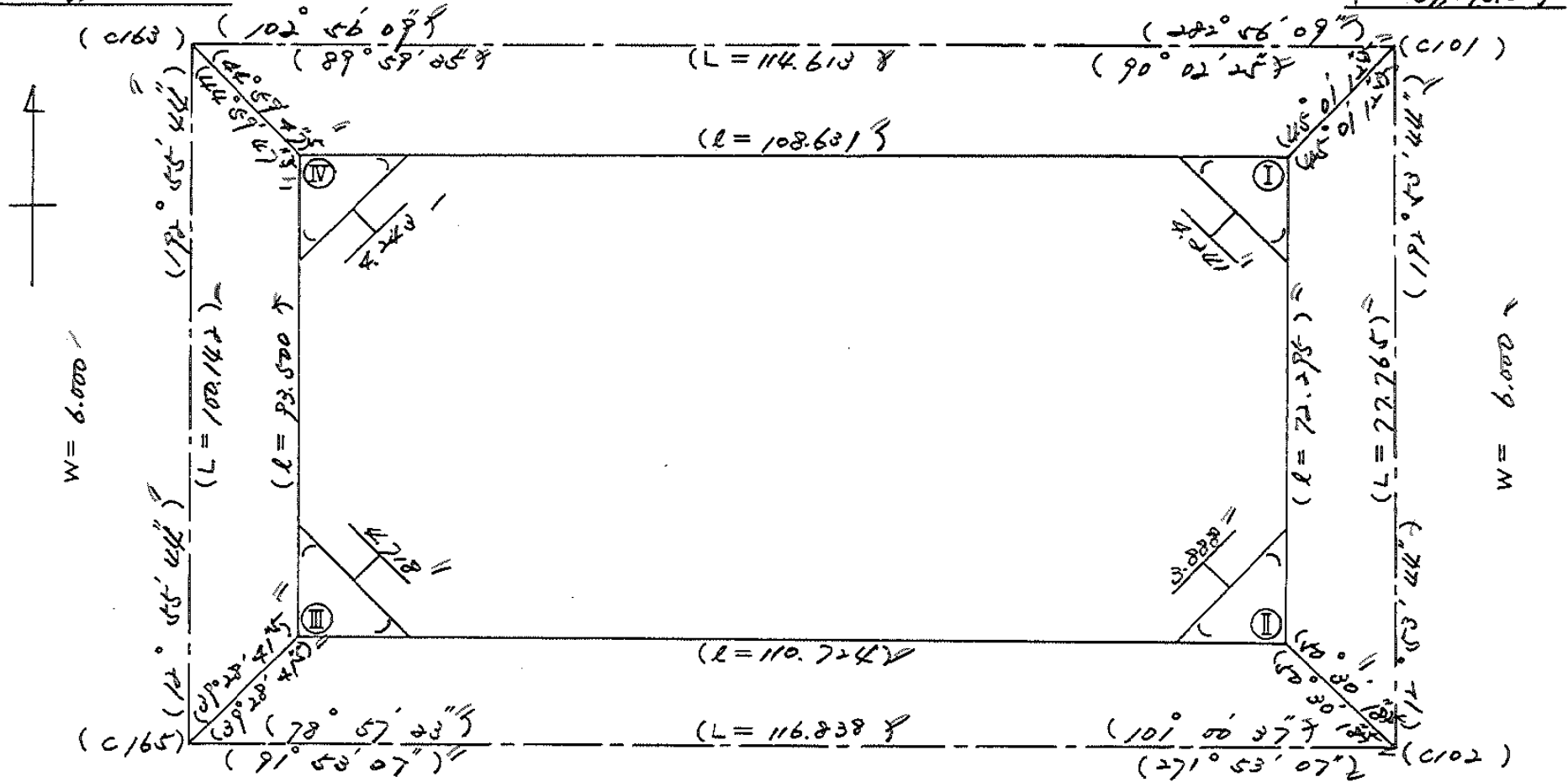
$X = -152,627.143$

$Y = -37,185.931$

$W = 6.000$

$X = -152,652.786$

$Y = -37,073.607$



$X = -152,724.746$

$Y = -37,207.737$

$W = 6.000$

$X = -152,728.590$

$Y = -37,090.962$

面積計算書

工区

3

ブロック

17
~~14~~

計算者



精算者



備考

倉庫

点	①	②	③	④	⑤	⑥	③ × ⑤		② × ⑥	
	X	X - (定数)	X _{n-1} - X _{n+1}	Y	Y - (定数)	Y _{n-1} - Y _{n+1}	+	-	+	-
I	-152,655.039	-152,600 -55.039	+94.771	-37,077.200	-31,050 -27.200	-89.743		2577.771200		4989.864977
II	-152,725.510	-125,570 -27,155.510	+66.829	-37,093.335	-43.335	+126.799		2896.034715		15914.544490
III	-152,721.868	-121,868 -30,853.868	-94.771	-37,203.999	-153.999	+89.743	14894.639229			10936.799924
IV	-152,630.739	-30,739 -121,891.739	-66.829	-37,183.078	-133.078	-126.799	8893.469662		3897.674461	
							23488.108891	5473.205915	8837.039488	26851.342414
							18014.302976			18014.302976
										$\frac{1}{2} = 9007.151488$
										$9007.15 - (4.50 + 4.61 + 4.61 + 4.50) = 8989.33$

画地計算

街区略図

工区

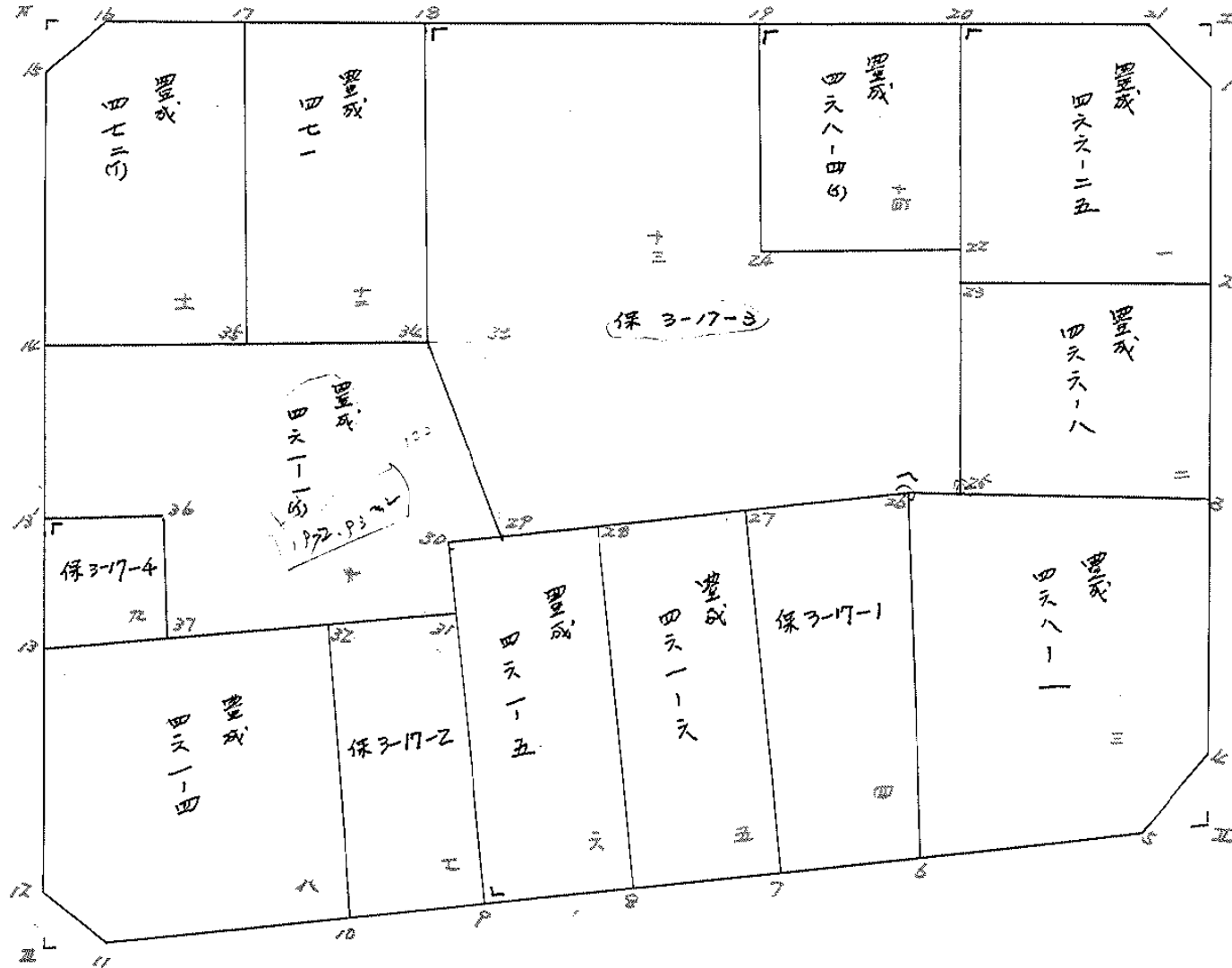
6

ブロック

17

記入者

点検者



面積計算書

工区 3

ブロック 17

計算者

精算者

備考

1 豊成 466-25

2 豊成 466-8

点	①	②	③	④	⑤	⑥	③ × ⑤	② × ⑥
	X	X-(定数)	X _{n-1} -X _{n+1}	Y	Y-(定数)	Y _{n-1} -Y _{n+1}	-	+
	-152	-152.650		-37	-37.070			
1	657.963	7.963	+28.941	077.870	7.870	+3.549	227.765670	28.260687
2	683.309	33.309	+21.974	083.673	13.673	+20.485	300.450602	692.334865
23	679.937	29.937	-31.637	098.355	28.355	+8.195	897.067135	245.333715
20	651.172	1.172	-25.569	091.848	21.848	-18.231	559.162892	30.482232
21	654.368	4.368	+6.291	080.124	10.124	-13.998	63.690084	61.163264
							1456.21007	591.906256
							864.303771	91.625496
								955.929267
								864.303771
								x 1/2 = 432.1518855
	-152	-152.670		-37	-37.080			
2	683.309	13.309	+18.282	083.673	3.673	-11.269	67.149786	148.979121
3	698.219	28.219	+11.539	087.086	7.086	+18.105	81.765254	510.906995
25	696.848	24.848	-18.282	101.778	21.778	+11.269	398.145396	280.012112
23	679.937	9.937	-11.539	098.355	18.355	-18.105	211.798245	179.909285
							609.943741	148.915160
								329.888506
							461.028601	790.917107
								461.028601
								x 1/2 = 230.5143005

分筆あり

面積計算書

工
区

2

ブ
ロ
ック

17

計
算
者



精
算
者



備
考

3 敷地 468-1
4 保 3-17-1

点	①	②	③	④	⑤	⑥	③	×	⑤	②	×	⑥
	X	X-(定数)	X _{n-1} -X _{n+1}	Y	Y-(定数)	Y _{n-1} -Y _{n+1}	+	-	+	-		
	-152	-152.690		-37	-37.080							
3	698.219	8.219	+28.473	997.084	7.086	-12.315			201.759678	101.216985		
4	722.586	22.586	+27.192	992.666	12.666	+9.247			344.413872			301.322762
5	725.411	25.411	+2.399	996.333	16.333	+16.612			39.182867			588.247532
6	724.985	24.985	-31.298	109.278	29.278	+8.642	916.342866					302.550280
26	694.113	4.113	-26.766	104.981	24.981	-22.192	668.644666			91.275696		
							1584.984290	585.35667	192.692687	1192.120556		
							999.627873			999.627873		
							$\times \frac{1}{2} = 499.8139365$					
	-152	-152.690		-37	-37.100							
26	694.113	4.113	+31.181	104.981	4.981	-5.003			155.312561	20.577339		
6	724.985	24.985	+30.674	109.278	9.278	+10.329			284.593372			361.360065
7	724.787	24.787	-31.181	115.310	15.310	+5.003	477.381110					174.039361
27	693.806	3.806	-30.674	114.281	14.281	-10.329	438.055396			39.291516		
							915.436506	439.905933	59.868855	635.399426		
							475.530571			475.530571		
							$\times \frac{1}{2} = 237.7652855$					

面積計算書

工区

3

ブロック

17

計算者



精算者



備考

5 豊成 461-6
6 豊成 461-5

点	①	②	③	④	⑤	⑥	③ ×	⑤	② ×	⑥
	X	X-(定数)	X _{n-1} -X _{n+1}	Y	Y-(定数)	Y _{n-1} -Y _{n+1}	+	-	+	-
27	⁻¹⁵² 693.804	^{-152.690} 3.804	+31.692	⁻³⁷ 114.281	^{-37.110} 4.281	-17.273			135.245252	65.706492
7	724.787	34.787	+30.381	115.310	5.310	+19.326			161.323110	672.293562
8	724.185	34.185	-31.692	133.607	23.607	+17.273	745.792344			590.477505
28	693.195	3.195	-30.381	132.583	22.583	-19.326	686.094123			61.746570
							1431.886467	296.568462	127.653082	1262.771067
							1135.318005			1135.318005
							× 1/2 = 567.6590025			
28	⁻¹⁵² 693.195	^{-152.690} 3.195	+31.233	⁻³⁷ 132.583	^{-37.130} 2.583	-6.278			80.674839	20.058210
8	724.185	34.185	+30.749	133.607	3.607	+8.322			110.911643	284.487570
9	723.944	33.944	-31.233	140.905	10.905	+6.278	360.595865			213.100432
30	692.952	2.952	-30.749	139.885	9.885	-8.322	303.953865			24.566544
							644.549730	191.586482	44.624754	497.588002
							452.963248			452.963248
							× 1/2 = 226.481624			

面積計算書

工区

3

ブロック

17

計算者

計算者

備考

保 3-17-2

豊成 461-4

点	①	②	③	④	⑤	⑥	③ × ⑤	② × ⑥
	X	X-(定数)	X _{n-1} -X _{n+1}	Y	Y-(定数)	Y _{n-1} -Y _{n+1}	+ -	+ -
	-152	-152.700		-37	-37.160			
31	709.808	9.808	+14.646	140.440	0.440	-14.933	6.441600	146.462864
9	723.964	23.964	+13.629	140.905	0.905	+15.870	12.334245	379.991280
10	723.437	23.437	-14.640	156.310	16.310	+14.933	238.778400	349.986721
32	709.304	9.304	-13.629	155.838	15.838	-15.870	215.856102	147.654480
							454.636502	18.775865
							435.858657	296.117344
							$\times \frac{1}{2} = 217.9293285$	729.976001
								435.858657
	-152	-152.700		-37	-37.150			
32	709.304	9.304	+15.604	155.838	5.838	-44.467	91.096162	413.720968
10	723.437	23.437	+12.663	156.310	6.310	+45.163	79.903580	1058.485231
11	721.967	21.967	-4.493	201.001	51.001	+47.018	229.147093	1032.944606
12	718.964	18.964	-14.134	203.328	53.328	-0.224	753.737952	4.243456
13	707.833	7.833	-9.640	200.777	50.777	-47.490	489.490280	371.989170
							1472.375725	170.999682
							1301.376063	789.953594
							$\times \frac{1}{2} = 650.6880215$	2091.329637
								1301.376063

面積計算書

工区

3

ブロック

17

計算者



精算者



備考

9 係 3-17-4
10 豊成 461-1 (1)

点	①	②	③	④	⑤	⑥	③	⑤	②	⑥
	X	X-(定数)	X _{n-1} -X _{n+1}	Y	Y-(定数)	Y _{n-1} -Y _{n+1}	+	-	+	-
26	-152 693.553	-152.690 2.553	+15.059	-37 187.046	-37.180 7.046	-10.059		106.105714	35.729627	
27	708.272	18.272	+14.280	187.361	7.361	+13.731		105.115080		250.892832
13	707.833	17.833	-15.059	200.777	20.777	+10.059	312.880843			179.382147
13'	693.213	3.213	-14.280	197.420	17.420	-13.731	248.757600		44.117703	
							561.638443	211.220794	79.857330	430.274979
							350.417649			350.417649
							x 1/2 = 175.2088245			
24	-152.670 673.863	-152.670 2.863	+21.209	-37.130 134.268	-37.130 4.268	-57.292		90.520012	221.318996	
29	693.107	23.107	+19.089	135.235	5.235	+5.617		99.930915		129.792019
30	692.952	22.952	+16.701	139.885	9.885	+5.205		165.089385		119.465160
31	709.808	39.808	+15.320	140.440	10.440	+47.476		159.940800		1889.924608
37	708.272	38.272	-16.255	187.361	57.361	+46.606	932.403055			1783.704822
36	693.553	23.553	-15.059	187.046	57.046	+10.059	859.055714			236.919627
13'	693.213	23.213	-21.655	197.420	67.420	+5.481	1459.980100			127.230455
14	671.898	1.898	-19.350	192.527	62.527	-63.152	1209.897450		119.862496	
							4461.336319	515.481112	341.181492	4287.036699
							3945.855207			3945.855207

x 1/2 = 1972.9276035

面積計算書

工区

ブロック

17

計算者



精算者



備考

11. 豊成 472 (1)
12. 豊成 471

点	①	②	③	④	⑤	⑥	③ × ⑤	② × ⑥
	X	X-(定数)	X _{n-1} -X _{n+1}	Y	Y-(定数)	Y _{n-1} -Y _{n+1}	+	-
17	-152 639.031	-152.630 9.031	+41.761	-37 146.947	-37.120 6.947	-25.370		290.113667
25	673.171	43.171	+32.867	154.784	14.784	+45.580		485.905728
14	671.898	41.898	-39.508	152.527	52.527	+28.965	2075.236716	
15	633.663	3.663	-40.498	183.749	43.749	-12.373	1771.309512	
16	631.410	1.410	+5.368	180.154	40.154	-36.802		215.546672
							3846.546228	991.566067
								326.329589
								3181.309750
								2854.980161
								$\times \frac{1}{2} = 1427.4900805$
18	-152 643.539	-152.630 13.539	+34.832	-37 127.308	-37.120 7.308	-12.679		244.552258
24	673.813	43.813	+29.632	134.268	14.268	+27.476		422.789376
25	673.171	43.171	-34.832	154.784	34.784	+12.679	1211.596288	
17	639.031	9.031	-29.632	146.947	26.947	-27.476	798.493504	
							890.055624	248.135756
							2010.089792	
							2059.651712	677.341632
							419.796737	1752.544897
							1332.748160	
							1412.210080	1332.748160
								$\times \frac{1}{2} = 666.374080$

面積計算書

工区 3

ブロック

17

計算者



精算者



備考

13 保 3-17-3

点	①	②	③	④	⑤	⑤	③	⑤	②	③	
	X	X-(定数)	X _{n-1} -X _{n+1}	Y	Y-(定数)	Y _{n-1} -Y _{n+1}	+	-	+	-	
19	-648.764	-640. 8.764	-30.664	-104.539	-90.00 14.539	+16.931	-	-	-	148.383284	
24	674.203	34.203	-28.347	110.377	20.377	+6.833	-	-	-	233.709099	
22	677.111	37.111	-20.645	097.706	7.706	+8.599	-	-	-	319.117489	
25	694.848	54.848	-17.002	101.778	11.778	-7.275	-	-	399.019200	-	
26	694.113	54.113	+1.741	104.981	14.981	-33.457	-	26.081921	1810.458641	-	
29	693.107	53.107	+20.250	105.234	45.234	-29.287	-	916.008750	1555.344709	-	
34	673.863	33.863	+29.568	104.268	44.268	+7.927	-	2194.276224	-	268.432001	
18	643.539	3.539	+25.099	127.308	37.308	+29.729	-	936.393492	-	105.210931	
								1382.790641	4072.760387	3764.822440	1074.842804
								2689.969746	2689.969746		
								1/2 1344.984873	m ²		

面積計算書

工区

3

ブロック

17

計測者

精算者

備考

14. 豊成 468-4M

点	①	②	③	④	⑤	⑥	③	×	⑤	②	×	⑥
	X	X-(定数)	X _{n-1} -X _{n+1}	Y	Y-(定数)	Y _{n-1} -Y _{n+1}			+			-
	-152	-152.640		-37	-37.090							
20	651.672	11.672	+28.347	091.868	1.868	-6.833			52.952196			79.7547761
22	677.111	27.111	+22.531	097.706	7.706	+18.509			623.886 173.674026			686.987499
24	674.203	24.203	-28.347	110.377	20.377	+6.833			577.626819			233.709099
19	648.764	8.764	-22.531	104.539	14.539	-18.509			327.578209			162.212876
									905.205028			920.596598
									628.946 678.578906			226.626222
												241.967652
												975.596598
												678.628946
												x 1/2 = 339.314473

面積計算書

工
区

3

ブ
ロ
ック

17

計
算
者



算
算
者



備
考

隅切 Ⅰ.Ⅱ

点	①	②	③	④	⑤	⑥	③	×	⑤	②	×	⑥
	X	X-(定数)	X _{n-1} -X _{n+1}	Y	Y-(定数)	Y _{n-1} -Y _{n+1}	+		-	+		-
Ⅰ	-152 655.039	-152.650 5.039	+3.595	-37 077.200	-37.070 7.200	-2.254			25.884000	11.357906		
1	657.963	7.963	-0.671	077.870	7.870	+2.924	5.280770					23.283812
2/	654.368	4.368	-2.924	080.124	10.124	-0.670	29.602576			2.926560		
							32.883346		25.884000	14.284466		23.283812
							8.999346					8.999346
							× 1/2 = 4.499673					
4	-152 722.586	-152.720 2.586	+0.099	-37 092.666	-37.090 2.666	-2.998			0.263934	7.752828		
Ⅱ	725.510	5.510	+2.825	093.335	3.335	+3.667			9.421375			20.205170
5	725.411	5.411	-2.924	096.333	4.333	-0.669	18.517692			3.619959		
							18.517692		9.685309	11.372787		20.205170
							8.832383					8.832383
							× 1/2 = 4.4161915					

面積計算書

工区

0

ブロック

17

計算者



計算者



備考

隣切Ⅲ、Ⅳ

点	①	②	③	④	⑤	⑥	③ × ⑤	② × ⑥
	X	X-(定数)	X _{n-1} -X _{n+1}	Y	Y-(定数)	Y _{n-1} -Y _{n+1}	-	+
	-152	-152.710		-37	-37.200			
11	721.967	11.967	+2.924	201.001	1.001	+0.671	2.926924	8.029857
11	721.868	11.868	-3.023	203.999	3.999	+2.327	12.088977	27.616836
12	718.944	8.944	+0.099	202.228	3.328	-2.998	0.329472	26.814112
							12.088977	3.256396
							26.814112	35.646693
							8.832581	8.832581
							× 1/2 = 4.4162905	
15	-152	-152.630		-37	-37.180			
15	633.223	3.223	-0.671	183.749	3.749	+2.924	2.615579	10.710612
17	630.739	0.739	-2.253	183.078	3.078	-3.596	6.934736	2.656705
16	631.410	1.410	+2.924	180.154	0.154	+0.671	0.450296	0.946110
							9.450313	0.450296
							2.656705	11.656722
							9.000017	9.000017
							× 1/2 = 4.5000085	

計年月
算日

計
算
者



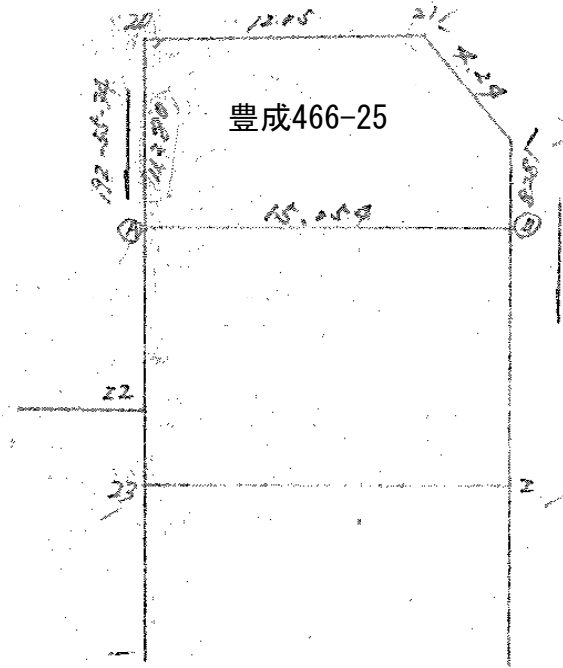
檢
查
者



B.NO. 17

各筆面積計算書

地 番	算 式	隅	切	地 積	摘 要
	豊成 466-25			432.15	
	豊成 466-8			230.51	
	豊成 468-1			499.81	
	保 3-17-1			237.76	
	豊成 461-6			567.65	
	豊成 461-5			226.48	
	保 3-17-2			217.92	
	豊成 461-4			650.68	
	保 3-17-4			175.20	
	豊成 461-1(A)			1972.92	
	豊成 472(A)			1427.49	
	豊成 471			466.37	
	保 3-17-3			1344.98	
	豊成 468-4(A)			339.31	
	計			8989.23	
	全 体			8989.33	
	差			- 0.10	



面積計算表及び二点間距離 豊成466-25

No	D	X _n (1)	X _{n+1} - X _{n-1} (2)	Y _n (3)	Y _{n+1} - Y _{n-1} (4)	(2) × (3) +	(1) × (4) -
20.	11.280	651.672	-8.299	071.868	-14.267	307825.42532	2177881.40992
21	12.050	654.768	6.291	080.124	-13.998	233271.06084	2136855.893264
1.	4.24	657.963	11.667	077.870	-5.406	43087.809270	61379.132778
B	8.280	666.035	4.704	079.718	16.521	174422.993492	252216.564228
A	15.054	662.667	-14.363	074.391	12.150	572786.739938	1854551.40905
						3305876	
						1652938	m ²
						50.0014	坪