

**BLOCK NO. 19**

**街 区 計 算**

街区略図

工区

ウ

ブロック

23 19

記入者

点検者

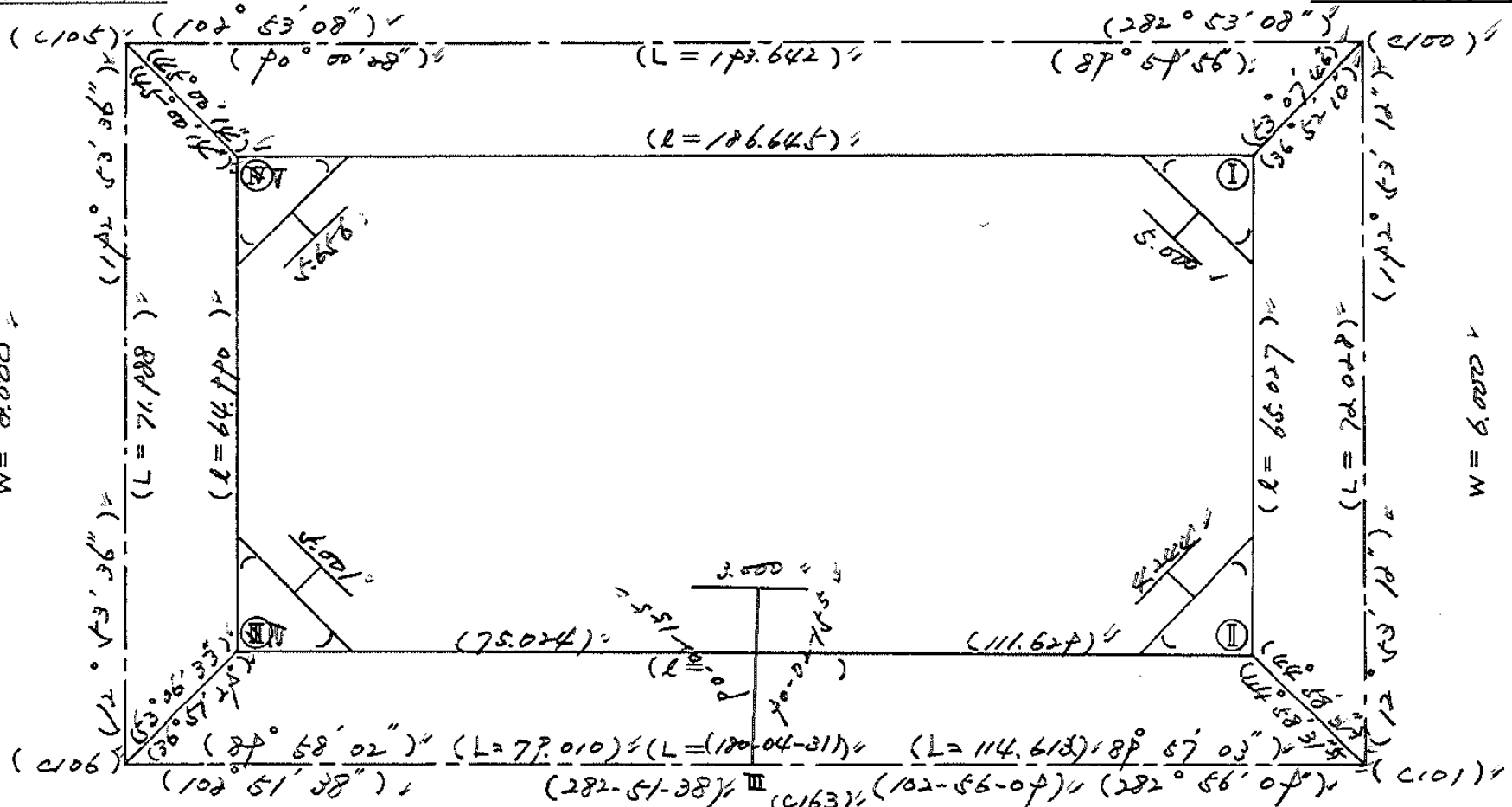
$X = -152,537.370$   
 $Y = -37,246.311$

$W = 8,000$

$X = -152,582.571$   
 $Y = -37,057.543$



$W = 8,000$



$X = -152,607.567$   
 $Y = -37,262.375$

$W = 6,000$

$X = -152,627.143$   
 $Y = -37,185.221$

$X = -152,652.786$   
 $Y = -37,073.607$

# 面積計算書

工区

3

ブロック

19 33

計算者



精算者



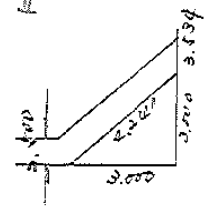
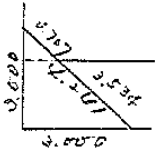
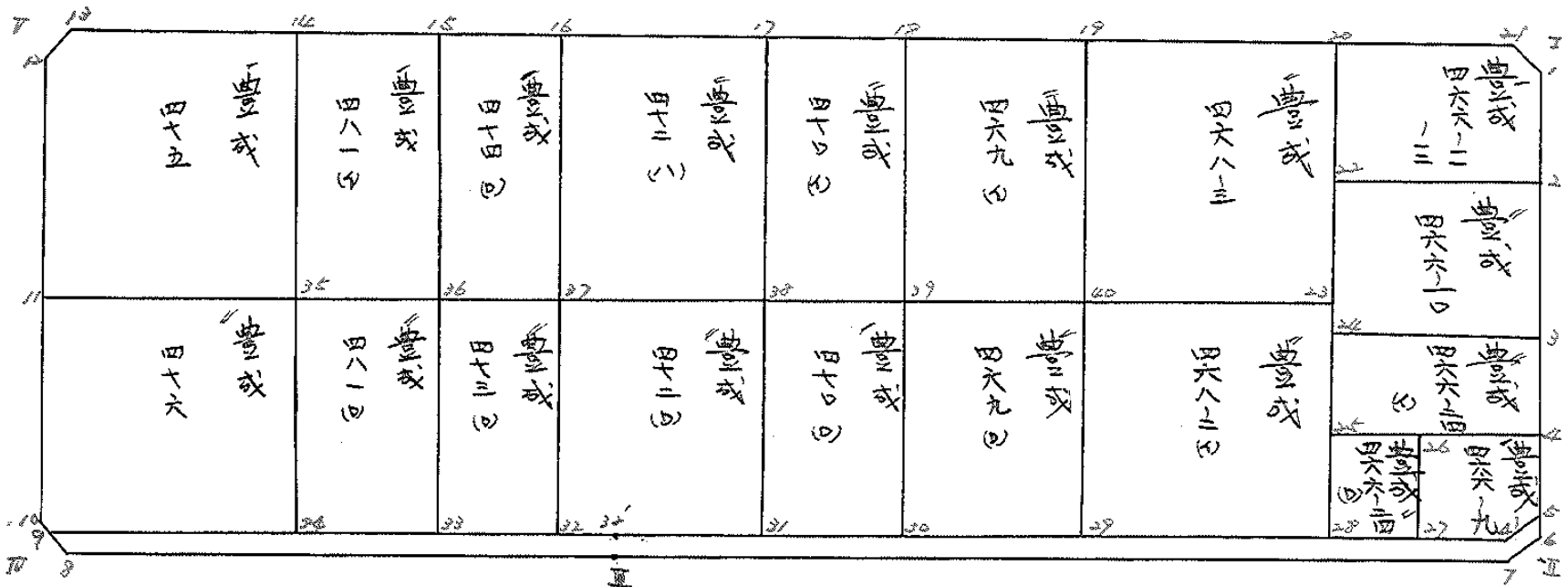
備考

全体

点	①	②	③	④	⑤	⑥	③ × ⑤		② × ⑥	
	X	X-(定数)	X <sub>n-1</sub> -X <sub>n+1</sub>	Y	Y-(定数)	Y <sub>n-1</sub> -Y <sub>n+1</sub>	+	-	+	-
I	-152,585.801	$\frac{-152,500}{85.801}$	+105.009	-37,061.354	$\frac{-37,000}{61.359}$	-167.444			6,443.247231	14,366.862644
II	-152,644.140	149.190	+38.418	-37,075.861	75.861	+123.302			2,914.427898	18,395.425380
III	-152,624.214	124.219	-41.657	-37,184.661	184.661	+181.945	7,692.422277			22,601.025965
IV	-152,607.533	107.533	-80.038	-37,257.806	257.806	+58.644	20,634.276678			6,306.165252
V	-152,564.181	44.181	-21.732	-37,243.325	243.305	-196.447	5,287.504760		8,679.224907	
							33,614.204165	9,352.675129	23,046.087551	47,302.616587
							24,256.527036			24,256.527036
									$\frac{1}{2} = 12,128.264518$	
				Σ	I	II	IV	V		
										$12,128.264518 - (4.504 + 4.504 + 4.504 + 4.504) = 12,110.264$

# 面地計算

B.V.O. 58/19



13枚-1

面積計算書		工区	ウ	ブロック	1953	計算者	大塚	精算者	検査	備考	466-11	-12
点	①	②	③	④	⑤	⑥	③ ×	⑤	② ×	⑥		
	X	X-(定数)	X <sub>n-1</sub> -X <sub>n+1</sub>	Y	Y-(定数)	Y <sub>n-1</sub> -Y <sub>n+1</sub>	+	-	+	-		
		-152,500.			-37,060.							
1	-152,588.725	-88.725	+16.757	-37,062.028	-2.028	+0.756		33.983196		67.076100		
2	-152,601.889	-101.889	+7.323	-37,065.040	-5.040	+28.523		36.907920		2906.179947		
22	-152,596.048	-96.048	-21.923	-37,090.551	-20.551	+21.827	668.769573			2096.439696		
20	-152,579.966	-79.966	-10.916	-37,086.867	-26.867	-26.267	293.280172		2100.466922			
21	-152,585.132	-85.132	+8.759	-37,064.284	-4.284	-24.839		37.523556	2114.593748			
							963.049745	108.414672	4215.060670	5067.695743		
							854.635073			854.635073		
								1/2 = 427.31				
2	-152,601.889	-101.889	+24.447	-37,065.040	-5.040	-21.255		123.212880	2165.650695			
3	-152,620.495	-120.495	+12.758	-37,069.296	-7.296	+29.771		118.598368		3587.256645		
24	-152,614.647	-114.647	-24.447	-37,074.811	-24.811	+21.255	851.024517			2436.821985		
22	-152,596.048	-96.048	-12.758	-37,090.551	-20.551	-29.771	389.769658		2859.445008			
							1240.794175	241.811248	5025.095703	6024.078630		
							998.982927			998.982927		
								1/2 = 499.49				

面積計算書						工区	ブロック	計算者	縮尺者	備考
						3	19			豊成 466-24 41 466-9
点	①	②	③	④	⑤	⑥	③ × ⑤		② × ⑥	
	X	X-(定数)	X <sub>n-1</sub> -X <sub>n+1</sub>	Y	Y-(定数)	Y <sub>n-1</sub> -Y <sub>n+1</sub>	+	-	+	-
3	-152,620.495	-152,600 -20.495	+18.342	-37,069.296	-37,060 -9.296	-22.657		170,507.232		464,352.15
4	-152,632.989	-32.989	+6.640	-37,072.154	-12.154	+28.376		80,702.560		936,085.864
25	-152,627.135	-27.135	-18.342	-37,097.672	-37.672	+22.657	670,979.824			614,797.681
24	-152,614.647	-14.647	-6.640	-37,094.811	-34.811	-28.376	231,145.040			415,623.272
							922,124.864	251,209.792	879,978.487	1,550,893.159
							570,915.072			670,915.072
								1/2 = 225,457.536		
4	-152,632.989	-152,600 -32.989	+13.194	-37,072.154	-37,070 -2.154	-12.405		28,419.876		409,228.545
5	-152,642.821	-42.821	+12.861	-37,074.404	-4.404	+7.081		56,639.840		303,215.501
41	-152,645.850	-45.850	+0.566	-37,078.235	-9.235	+15.566		5,227.010		713,609.406
27	-152,643.387	-43.387	-16.223	-37,089.768	-19.768	+7.574	323,940.864			328,613.138
26	-152,629.627	-29.627	-10.398	-37,086.809	-16.809	-17.814	174,779.982			527,775.378
							498,720.946	90,286.730	927,003.923	1,345,638.029
							408,434.116			408,434.116
								1/2 = 204,217.058		

面積計算書		工区	ウ	ブロック	19	55	計算者	精算者	備考	466-24 (D)	268-2(4)
点	①	②	③	④	⑤	⑥	③ × ⑤		② × ⑥		
	X	X-(定数)	X <sub>n-1</sub> -X <sub>n+1</sub>	Y	Y-(定数)	Y <sub>n-1</sub> -Y <sub>n+1</sub>	+	-	+	-	
25	-153,627.135	-152.600 27.135	-11.269	-37,097.672	-37.000 97.672	-14.015	1100.665768			380.297025	
26	-152,629.627	29.627	+16.252	-37,086.80	86.909	-7.704		1410.819868		228.246408	
27	-152,642.387	43.387	+11.269	-37,089.968	89.968	+14.015		1013.849392			608.068805
28	-152,640.896	40.896	-16.252	-37,100.824	100.824	+7.704	1638.591648				315.062784
							2739.257416	2424.669260		608.543433	923.131589
							314.588156				314.588156
								1/2 = 157.29			
23	-152,611.062	-152.600 11.062	+36.814	-37,093.990	-37.000 43.990	-23.668		1619.447860		261.815416	
28	-152,640.896	40.896	+22.834	-37,100.824	50.824	+37.331		1160.515216			1526.688576
29	-152,633.896	33.896	-36.814	-37,101.321	81.321	+23.668	2993.751294				802.250528
40	-152,604.082	4.082	-22.834	-37,124.492	74.492	-37.321	1700.950328			152.385142	
							4694.701622	2779.963076		414.200558	2328.949104
							1914.738546				1914.738546
								1/2 = 957.36			



面積計算書						工区	3	ブロック	19	計測者	精算者	備考	豊成 469 (1)
点	①	②	③	④	⑤	③ × ⑤		② × ⑥					
	X	X-(定数)	X <sub>n-1</sub> -X <sub>n+1</sub>	Y	Y-(定数)	+	-	+	-				
40	-152,604.082	-152.550 54.082	+34.891	-37,124.492	-37.100 24.492	-15.358		854,550.372	830,591.356				
29	-152,603.296	83.896	+24.723	-37,131.321	31.321	+29.012		774,349.083	2433,990.752				
30	-152,628.205	78.805	-34.891	-37,153.504	53.504	+15.358	1866,808.064		1210,287.190				
39	-152,599.005	49.005	-24.723	-37,146.677	46.677	-29.012	1154,044.917		1421,733.060				
							3020,852.981	1628,899.455	2252,324.416	3644,277.942			
							1391,953.526			1391,953.526			
								1/2 = 695.97					
39	-152,599.005	-152.550 49.005	+33.585	-37,146.677	-37.100 46.677	-9.718		1567,714.215	476,230.590				
30	-152,628.205	78.805	+26.004	-37,153.504	53.504	+23.365		1391,318.016	1841,278.825				
31	-152,625.009	75.009	-33.585	-37,170.044	70.044	+9.718	2352,427.740		728,937.462				
38	-152,595.220	45.220	-26.004	-37,162.222	63.222	-23.365	1644,024.888		1056,545.300				
							3996,452.628	2959,032.231	1532,795.890	2570,211.287			
							1037,420.397			1037,420.397			
								1/2 = 518.71					

面積計算書		工区	ウ	ブロック	19	計算者	精算者	備考	豊成 472 (D)	473 (D)
点	①	②	③	④	⑤	⑥	③ × ⑤	② × ⑥		
	X	X-(定数)	X <sub>n-1</sub> -X <sub>n+1</sub>	Y	Y-(定数)	Y <sub>n-1</sub> -Y <sub>n+1</sub>	+	-	+	-
30	-152,575.220	-152.550 45.220	+ 35.219	-37,163.222	-37.150 13.222	- 16.906		465.665618	764.489320	
31	-152,625.009	75.009	+ 26.562	-37,170.044	20.044	+ 20.881		532.408728	1566.262929	
32	-152,621.782	71.782	- 5.433	-37,184.103	34.103	+ 23.728	185.281599		1707.243296	
33	-152,619.576	69.576	- 31.992	-37,193.772	43.772	+ 2.847	1400.353824		198.082872	
37	-152,589.790	39.790	- 24.356	-37,186.950	36.950	- 30.550	899.954200		1215.584500	
							2485.589623	998.074346	1980.073820	3467.589097
							1487.515277			1487.515277
								1/2 = 743.75		
32	-152,619.576	-152.550 69.576	- 26.261	-37,193.772	-37.150 43.772	- 22.276	1149.496492		1549.874976	
37	-152,589.790	39.790	- 33.322	-37,186.950	36.950	+ 8.635	1231.267900		343.586650	
36	-152,586.254	36.254	+ 26.261	-37,202.407	52.407	+ 22.276		1376.260227	807.594104	
33	-152,616.051	66.051	+ 33.322	-37,209.226	59.226	- 8.635		1973.528772	570.350385	
							2380.744392	3349.788999	2120.225361	1151.180754
							969.044607			969.044607
								1/2 = 484.52		

面積計算書										工区	ウ	ブロック	19	計測者	精算者	備考	量成	475
点	①	②	③	④	⑤	⑥	③ ×	⑤	② ×	⑥								
	X	X-(定数)	X <sub>n-1</sub> -X <sub>n+1</sub>	Y	Y-(定数)	Y <sub>n-1</sub> -Y <sub>n+1</sub>	+	-	+	-								
11	-152,575.267	$\overset{-152.500}{=} 75.267$	$\overset{=} -35.273$	$\overset{-37.250.420}{=} -37,250.420$	$\overset{-37.200}{=} 50.420$	$\overset{=} +24.632$	$\overset{=} 1778.464660$			$\overset{=} 1853.976744$								
12	-152,547.106	$\overset{=} 47.106$	$\overset{=} -30.417$	$\overset{-37.243.974}{=} -37,243.974$	$\overset{=} 43.974$	$\overset{=} -10.040$	$\overset{=} 1337.557158$		$\overset{=} 472.944240$									
13	-152,544.850	$\overset{=} 44.850$	$\overset{=} +4.184$	$\overset{-37.240.380}{=} -37,240.380$	$\overset{=} 40.380$	$\overset{=} -31.747$		$\overset{=} 168.949920$	$\overset{=} 1423.852950$									
14	-152,551.290	$\overset{=} 51.290$	$\overset{=} +37.529$	$\overset{-37.212.227}{=} -37,212.227$	$\overset{=} 12.227$	$\overset{=} -21.038$		$\overset{=} 458.847083$	$\overset{=} 1079.039020$									
35	-152,552.379	$\overset{=} 82.379$	$\overset{=} +23.977$	$\overset{-37.219.342}{=} -37,219.342$	$\overset{=} 19.342$	$\overset{=} +38.193$		$\overset{=} 463.763134$		$\overset{=} 3146.301147$								
							$\overset{=} 3116.021818$	$\overset{=} 1091.580137$	$\overset{=} 2975.836210$	$\overset{=} 5000.277891$								
							$\overset{=} 2024.441681$			$\overset{=} 2024.441681$								
								$\overset{=} \frac{1}{2} = 1012.22$										
14	-152,551.290	$\overset{-152.550}{=} 1.290$	$\overset{=} +27.215$	$\overset{-37.212.227}{=} -37,212.227$	$\overset{-37.190}{=} 22.227$	$\overset{=} +24.050$		$\overset{=} 604.907805$		$\overset{=} 31.024500$								
35	-152,552.379	$\overset{=} 32.379$	$\overset{=} +34.964$	$\overset{-37.219.342}{=} -37,219.342$	$\overset{=} 29.342$	$\overset{=} -9.820$		$\overset{=} 1025.913688$	$\overset{=} 317.961780$									
36	-152,556.254	$\overset{=} 36.254$	$\overset{=} -27.215$	$\overset{-37.222.407}{=} -37,222.407$	$\overset{=} 12.407$	$\overset{=} -24.050$	$\overset{=} 337.656505$		$\overset{=} 871.908700$									
15	-152,555.164	$\overset{=} 5.164$	$\overset{=} -34.964$	$\overset{-37.195.292}{=} -37,195.292$	$\overset{=} 5.292$	$\overset{=} -9.820$	$\overset{=} 185.029488$			$\overset{=} 50.710480$								
							$\overset{=} 522.685993$	$\overset{=} 1630.821493$	$\overset{=} 1189.870480$	$\overset{=} 81.734980$								
							$\overset{=} 1108.135500$			$\overset{=} 1108.135500$								
								$\overset{=} \frac{1}{2} = 554.06$										

面積計算書						工区	ブロック	計算者	精算者	備考	備考	備考
			3	19	<del>5</del>						481(0)	476
点	①	②	③	④	⑤	⑥	③	⑤	②	⑥		
	X	X-(定数)	X <sub>n-1</sub> -X <sub>n+1</sub>	Y	Y-(定数)	Y <sub>n-1</sub> -Y <sub>n+1</sub>	+	-	+	-		
36	-152.586.254	-152.550 36.254	+33.672	-37.202.407	-37.200 2.407	-10.116		81.048504	266.745464			
33	-152.616.054	66.051	+25.933	-37.209.226	9.226	+23.756		239.257858		1569.107556		
34	-152.612.187	62.187	-33.672	-37.226.163	26.163	+10.116	880.960536			629.083692		
35	-152.582.379	32.379	-25.933	-37.219.342	19.342	-23.756	501.596086		769.195524			
							1382.556622	320.306362	1135.940988	2198.191248		
							1062.250260			1062.250260		
								1/2 = 531.12				
35	-152.582.379	-152.550 32.379	+36.920	-37.219.342	-37.200 17.342	-26.257		714.106640	785.417403			
34	-152.612.187	62.187	+22.829	-37.226.163	26.163	+37.419		597.275127		2326.975353		
9	-152.605.208	55.208	-7.578	-37.256.761	56.761	+30.974	430.134858			1710.012592		
10	-152.604.609	54.609	-29.941	-37.257.137	57.137	-6.341	1710.738917		346.275669			
11	-152.575.267	25.267	-22.230	-37.250.420	50.420	-37.795	1120.836600		954.966265			
							3241.710375	1311.381767	2086.659337	4036.987945		
							1950.328608			1950.328608		
								1/2 = 975.16				

面積計算書

工区 3 ブロック 19 計算者 精算者 備考 量式 474 (D) 472 (11)

点	①	②	③	④	⑤	⑥	③ × ⑤		② × ⑥	
	X	X-(定数)	X <sub>n-1</sub> -X <sub>n+1</sub>	Y	Y-(定数)	Y <sub>n-1</sub> -Y <sub>n+1</sub>	+	-	+	-
15	-152,555.164	-55.164	-27.553	-37,195.292	-95.292	-22.577	2625.580476		1245.437628	
16	-152,558.701	-58.701	+34.626	-37,179.830	-79.830	-8.342		2764.193580	489.693742	
27	-152,589.790	-89.790	+27.553	-37,186.950	-86.950	+22.577		2395.733350		2027.188830
26	-152,586.254	-86.254	-34.626	-37,202.407	-102.407	+8.342	3545.946782			719.530868
							6171.525258	5159.926930	1735.121370	2744.719698
							1011.598328			1011.598328
							1/2 = 505.799164			
16	-152,558.701	-58.701	-25.662	-37,179.830	-79.830	-30.848	2049.597460		1810.809468	
17	-152,564.128	-64.128	+36.519	-37,156.102	-56.102	-16.608		2048.788938	1065.037826	
38	-152,595.220	-95.220	+25.662	-37,163.222	-63.222	+30.848		1622.402966		2937.366560
27	-152,589.790	-89.790	-36.519	-37,186.950	-86.950	+16.608	3175.327050			1491.232320
							5223.974570	3671.191902	2875.846272	6428.579880
							1552.732608			1552.732608
							1/2 = 776.366304			

面積計算書						工区	ブロック	計測者	精算者	備考	備考
						ウ	19				470. (4)
											269 (4)
点	①	②	③	④	⑤	⑥	③ × ⑤		② × ⑥		
	X	X-(定数)	X <sub>n-1</sub> -X <sub>n+1</sub>	Y	Y-(定数)	Y <sub>n-1</sub> -Y <sub>n+1</sub>	+	-	+	-	
17	-152,564.128	-152,500 = -64.128	-27.307	-37,156.102	-37,100 = -56.102	-23.664	1531.977316		1517.526992		
18	-152,567.913	-67.913	+34.877	-37,139.558	-39.558	-9.423		1379.666366	639.946199		
39	-152,579.005	-79.005	+27.307	-37,146.679	-46.679	+23.664		1276.662453		2342.854320	
38	-152,595.220	-95.220	-34.877	-37,163.222	-63.222	+9.423	2204.993696			897.258060	
							3736.971008	2656.327819	2157.469191	3240.112380	
							1082.643189			1082.643189	
							1/2 = 541.3215945				
18	-152,567.913	-152,500 = -67.913	-26.016	-37,139.558	-37,100 = -39.558	-29.309	1029.140928		1990.462117		
19	-152,572.989	-72.989	+36.169	-37,117.270	-17.370	-15.066		629.255530	1099.652274		
40	-152,604.082	-104.082	+26.016	-37,124.492	-24.492	+29.309		637.193872		3050.539328	
39	-152,579.005	-79.005	-36.169	-37,146.679	-46.679	+15.066	1688.332751			1491.609330	
							2717.473679	1265.429402	3090.114391	4652.168668	
							1462.034277			1462.034277	
							1/2 = 726.0171385				

面積計算書										
	工区	3	ブロック	19	計測者		精算者		備考	豊成 460-3
点	①	②	③	④	⑤	⑥	③ × ⑤	② × ⑥		
	X	X-(定数)	X <sub>n-1</sub> -X <sub>n+1</sub>	Y	Y-(定数)	Y <sub>n-1</sub> -Y <sub>n+1</sub>	+	-	+	-
19	-152,472.989	-152,472.989	-24.116	-37,117.370	-37,050.67	-37.624	1624.644920		2746.21124	
20	-152,479.966	-152,479.966	+38.073	-37,086.867	-36.867	-23.380		1403.637291	1869.605080	
23	-152,611.062	-152,611.062	+24.116	-37,093.990	-43.990	+37.624		1060.862840		4178.707750
40	-152,604.082	-152,604.082	-38.073	-37,124.492	-74.492	+23.380	2836.133916			433.427160
							4460.828836	2464.500121	4615.816205	4612.144910
							1996.328705			1996.328705
									1/2 = 998.16	

# 面積計算書

工区

ウ

ブロック

53 19

計算者



精算者



備考

水路

点	①	②	③	④	⑤	⑥	③ × ⑤		② × ⑥	
	X	X-(定数)	X <sub>n-1</sub> -X <sub>n+1</sub>	Y	Y-(定数)	Y <sub>n-1</sub> -Y <sub>n+1</sub>	+	-	+	-
5	-152,642.821	42.821	+0.416	-37,074.404	4.404	-4.403		1,232,064		173,125,303
6	-152,646.266	46.266	+5.698	-37,075.192	5.192	+4.381		29,684,016		202,691,346
7	-152,648.519	48.519	-22.047	-37,078.785	8.785	+109.469	193,622,895			531,326,411
Ⅲ	-152,624.219	24.219	-40.319	-37,184.661	114.661	+176.096	4622,016,859			4264,269,020
8	-152,608.200	8.200	-19.011	-37,254.881	184.881	+72.100	3514,772,691			591,220,000
9	-152,605.208	5.208	+13.582	-37,256.761	186.761	-70.778		2526,587,902	362,611,224	
30'	-152,621.782	21.782	+40.642	-37,184.103	114.103	-177.526		4637,374,126	3266,271,322	
41	-152,645.850	45.850	+21.039	-37,079.235	9.235	-109.699		194,295,165	529,699,150	
							8331,472,445	7299,673,273	9438,307,609	10370,106,781
							931,799,172			931,799,172
								Σ = 465,899,586		



面積計算書						工区	ブロック	計算者	精算者	備考
				19						陽功
点	①	②	③	④	⑤	⑥	③	⑤	②	⑥
	X	X-(定数)	X <sub>n-1</sub> -X <sub>n-1</sub>	Y	Y-(定数)	Y <sub>n-1</sub> -Y <sub>n-1</sub>	+	-	+	-
21	-152,525.132	-152,500 = -25.132	-2.924 =	-37,064.254	-37,060 = -4.254	-0.669 =	12.526416		56.953302	
I	-152,525.201	-25.801 =	+2.593 =	-37,061.359	-1.259 =	-2.256 =		4.882887	193.567056	
1	-152,528.725	-28.725 =	-0.669 =	-37,062.028	-2.028 =	+2.925 =	1.256732			259.520625
							12.883148	4.882887	250.520364	259.520625
							9.000261			9.000261
								1/2 = 4.5001305		
6	-152,646.266	-152,500 = -146.266	+0.671 =	-37,075.192	-37,070 = -5.192	-2.924 =		2.483882	135.281784	
II	-152,648.190	-48.190 =	+2.253 =	-37,075.861	-5.861 =	+2.593 =		12.204883		176.739670
7	-152,648.519	-48.519 =	-2.924 =	-37,078.785	-3.785 =	-0.669 =	25.687340		22.459211	
							25.687340	16.688665	167.740995	176.739670
							8.998675			8.998675
								1/2 = 4.4993375		

面積計算書						工区	ブロック	計測者	精算者	備考
				19						7月
点	①	②	③	④	⑤	⑥	③	⑤	②	⑥
	X	X-(定数)	X <sub>n-1</sub> -X <sub>n+1</sub>	Y	Y-(定数)	Y <sub>n-1</sub> -Y <sub>n+1</sub>	+	-	+	-
10	-152,604.609	$\overset{-152,600}{=}$ -4.609	$\overset{+0.667}{=}$	-37,257.137	$\overset{-37,200}{=}$ -57.137	$\overset{-2.925}{=}$			$\overset{28,110379}{=}$	$\overset{13,481325}{=}$
8	-152,608.200	$\overset{-2.200}{=}$	$\overset{+2.924}{=}$	-37,254.827	$\overset{-54.881}{=}$	$\overset{+0.669}{=}$			$\overset{160,472044}{=}$	$\overset{5,485800}{=}$
11	-152,607.533	$\overset{-7.533}{=}$	$\overset{-3.591}{=}$	-37,257.806	$\overset{-57.806}{=}$	$\overset{+2.256}{=}$	$\overset{207,581346}{=}$			$\overset{16,994448}{=}$
							$\overset{207,581346}{=}$	$\overset{178,582423}{=}$	$\overset{13,481325}{=}$	$\overset{22,480248}{=}$
							$\overset{8,998923}{=}$			$\overset{8,998923}{=}$
								$\overset{1/2=4.4994615}{=}$		
12	-152,547.106	$\overset{-152,500}{=}$ -47.106	$\overset{+0.669}{=}$	-37,243.974	$\overset{-37,200}{=}$ -43.974	$\overset{-2.925}{=}$			$\overset{29,418606}{=}$	$\overset{127,785050}{=}$
13	-152,544.850	$\overset{-44.850}{=}$	$\overset{-2.925}{=}$	-37,240.380	$\overset{-40.380}{=}$	$\overset{-0.669}{=}$	$\overset{118,111500}{=}$			$\overset{30,004650}{=}$
17	-152,544.181	$\overset{-44.181}{=}$	$\overset{+2.256}{=}$	-37,243.305	$\overset{-43.305}{=}$	$\overset{+3.594}{=}$			$\overset{97,696080}{=}$	$\overset{158,786514}{=}$
							$\overset{118,111500}{=}$	$\overset{127,114686}{=}$	$\overset{167,789700}{=}$	$\overset{158,786514}{=}$
								$\overset{9,003186}{=}$	$\overset{9,003186}{=}$	
								$\overset{1/2=4.501593}{=}$		

計年月  
算日

計算者



検査者



B. NO. 19

各筆面積計算書

地番	算式	隅切	地積	摘要
	豊成 466の11. 466の12		427.31	イ
	豊成 466の10		499.49	イ
	豊成 466の24(イ)		335.45	イ
	豊成 466の9		204.21	イ
	豊成 466の24(ロ)		157.29	イ
	豊成 468の2(イ)		957.36	イ
	豊成 469(ロ)		695.97	イ
	豊成 470(ロ)		518.71	イ
	豊成 472(ロ)		743.75	イ
	豊成 473(ロ)		484.52	イ
	豊成 481(ロ)		531.12	イ
	豊成 476		975.16	イ
	豊成 475		1,012.22	イ
	豊成 481(イ)		554.06	イ
	豊成 474(ロ)		505.79	イ
	豊成 472(イ)		776.36	イ
	豊成 470(イ)		541.32	イ
	豊成 469(イ)		726.01	イ
	豊成 468の3		998.16	イ
	水路		465.89	イ
	計		12,110.15	イ
	全体		12,110.26	イ
	差		-0.11	イ
	換地		11,644.26	イ
	水路		465.89	イ