

BLOCK NO. 11

街 区 計 算

街区略図

工区

3

ブロック

45 //

記入者

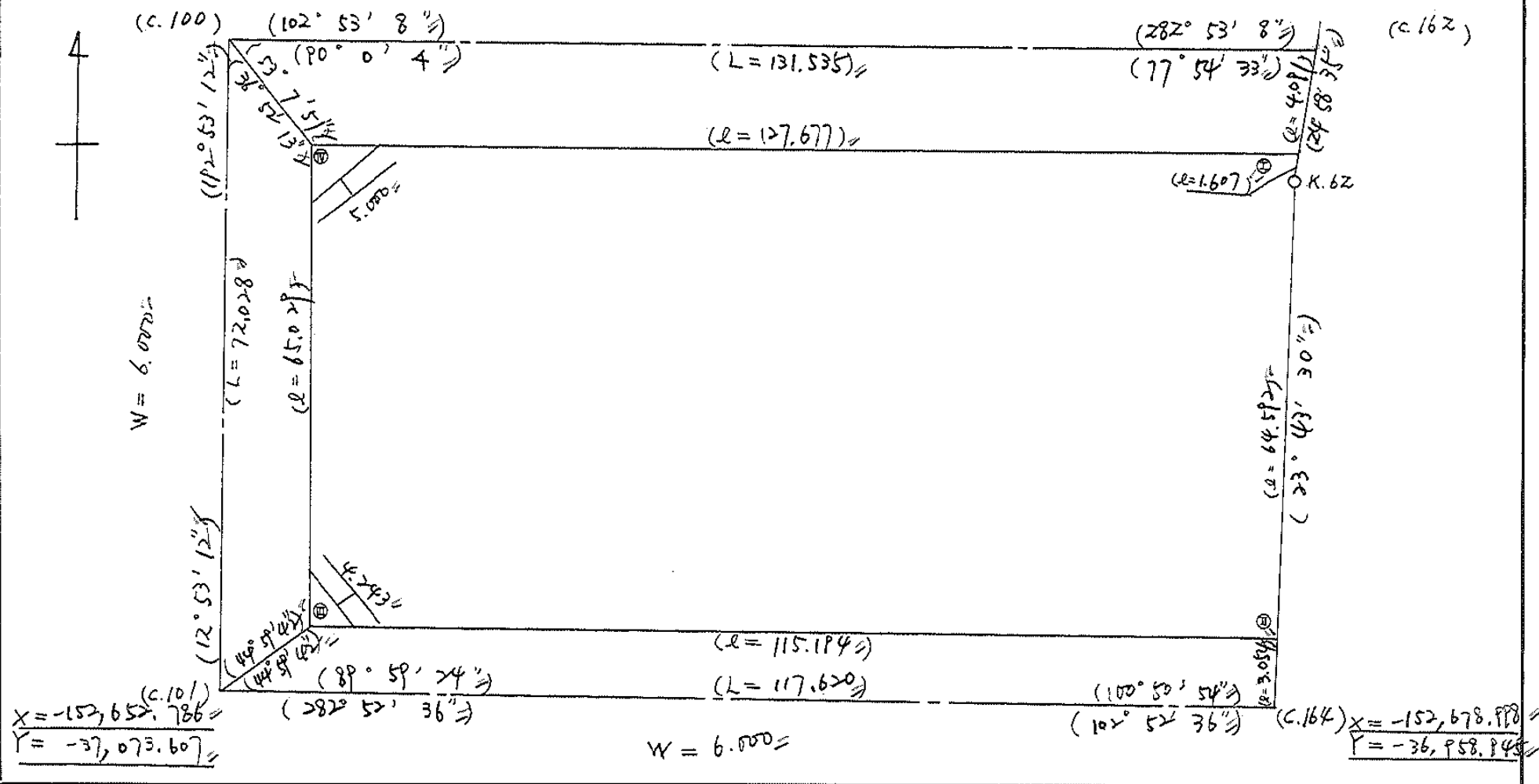


点検者

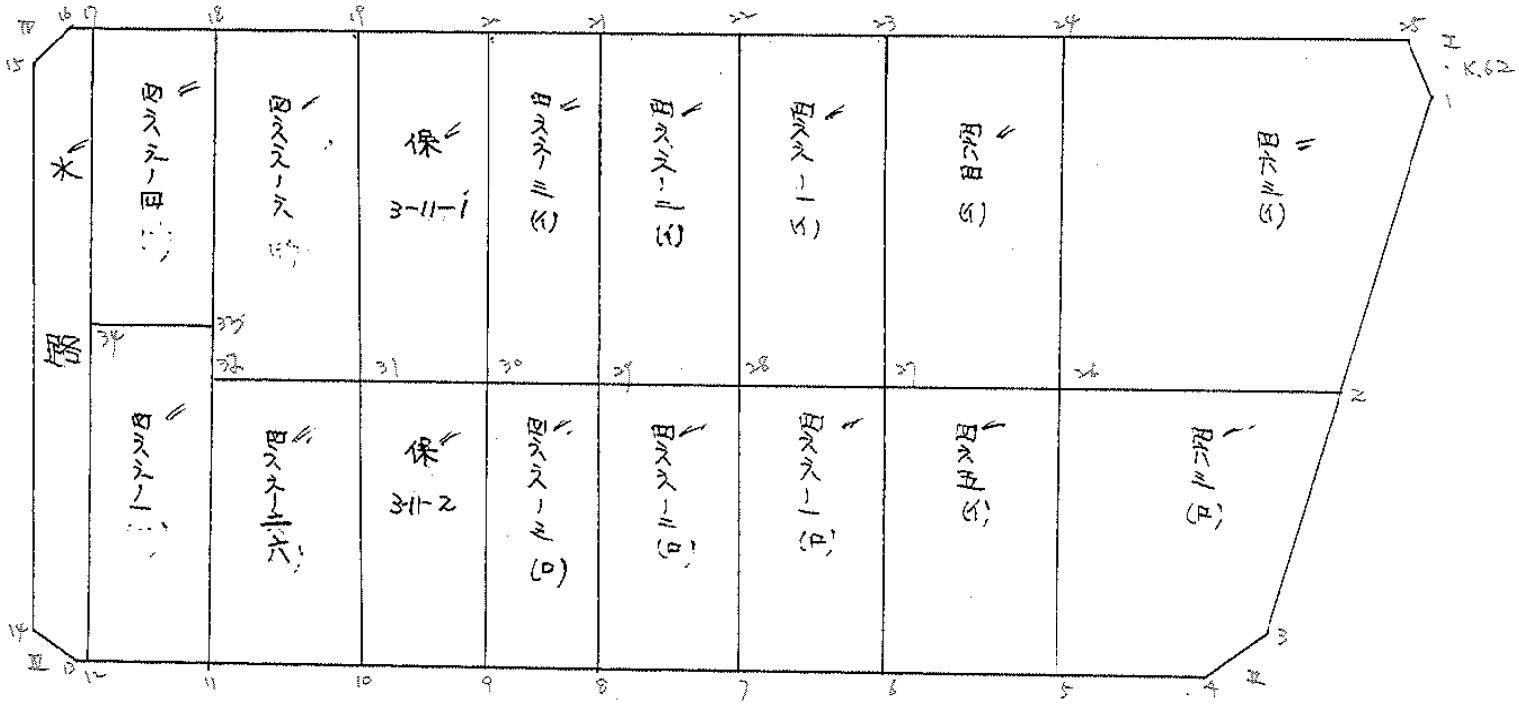
X = 132,582.571
Y = 37,057.543

W = 8.000

X = -152,611.904
Y = -36,927.322



面地計算



全圖

11枚-1

面積計算書		工区	3	ブロック	11	計算者	精算者	備考	量成 463 (K)	463 (D)
点	①	②	③	④	⑤	⑥	③ × ⑤	② × ⑥		
	X	X-(定数)	X _{n-1} -X _{n+1}	Y	Y-(定数)	Y _{n-1} -Y _{n+1}	+ -	+ -	+ -	-
1	-152,618.344	-152,600 18.344	+31.428	-36,932.288	-36,900 32.288	+10.632			1014.747264	195.033408
2	-152,646.371	46.371	+22.473	-36,944.606	44.606	+36.607			1002.430638	1697.523197
26	-152,640.817	40.817	-37.731	-36,968.895	68.895	+16.921	2599.477245			690.664457
24	-152,608.640	8.640	-25.874	-36,961.527	61.527	-34.921	1591.949598			301.717440
25	-152,614.943	14.943	+9.704	-36,933.974	33.974	+9.239			329.683696	436.918377
							4191.426843		2246.861598	728.6258192593.201062
							1844.565245			1844.565245
									$\frac{1}{2} = 9227826225$	
2	-152,646.371	-152,600 46.371	+32.639	-36,944.606	-36,900 44.606	-12.386			1455.895224	574.251206
3	-152,673.456	73.456	+29.162	-36,956.509	+6.509	+16.034			1647.915458	1197.793504
4	-152,675.533	75.533	-1.443	-36,960.640	60.640	+19.530			87.503520	1475.159490
5	-152,672.013	72.013	-24.716	-36,976.039	76.039	+8.255	2639.769224			594.467315
26	-152,640.817	40.817	-25.642	-36,968.895	68.895	-31.433	1766.605590			1283.000761
							4493.879034		3103.810692	1857.351967
							1,390,068,342			3,247.420309
										1,390.068342
									$\frac{1}{2} = 695.034171$	

面積計算書		工区	ウ	ブロック	45 11	計測者	精算者	備考	豊成 465(4) 466-1(0)
点	①	②	③	④	⑤	⑥	③ × ⑤	② × ⑥	
	X	X-(定数)	X _{n-1} -X _{n+1}	Y	Y-(定数)	Y _{n-1} -Y _{n+1}	+ -	+ -	
26	-152,640.817	-152,600 40.817	+34.382	-36,968.895	-36,900 68.895	-6.793	2368.747890	277.269881	
5	-152,672.013	72.013	+28.010	-36,976.039	76.039	+21.080	2129.82390	1518.034040	
6	-152,668.827	68.827	-34.382	-36,989.975	89.975	+6.793	3093.520450	467.541811	
27	-152,637.631	37.631	-28.010	-36,982.832	82.832	-21.080	2320.124320	793.261480	
							5413.644770	44498.620280	
							1070.531361	1925.575851	
							915.044490	915.044490	
							1/2 = 457.522245		
27	-152,637.631	-152,600 37.631	+34.806	-36,982.832	-36,900 82.832	-8.645	2883.050592	325.319995	
6	-152,668.827	68.827	+27.587	-36,989.975	89.975	+22.930	2482.140325	1578.203110	
7	-152,665.218	65.218	-34.806	-37,005.762	105.762	+8.645	3681.152172	463.809610	
28	-152,634.021	34.021	-27.587	-36,998.620	98.620	-22.930	2720.629940	780.101530	
							6401.782112	5365.190917	
							1105.421525	2143.012720	
							1036.591195	1036.591195	
							1/2 = 518.295995		

面積計算書		工区	3	ブロック	11	計測者	精算者	備考	豊成 466-2(12) " 466-3(10)
点	①	②	③	④	⑤	⑥	③ × ⑤	② × ⑤	
	X	X-(定数)	X _{n-1} -X _{n+1}	Y	Y-(定数)	Y _{n-1} -Y _{n+1}	+ -	+ -	
28	-152,624.021	-152,600 34.021	+34.740	-36,999.620	-36,900 99.620	-8.354	3426.058800	284.21434	
7	-152,665.218	65.218	+27.655	-37,005.762	105.762	+22.637	2924.848110	1476.339866	
8	-152,661.676	61.676	-34.740	-37,021.257	121.257	+8.354	4212.468180	415.241304	
29	-152,630.478	30.478	-27.655	-37,014.116	114.116	-22.637	3155.877980	689.930426	
							7368.346160	6250.906910	
							1017.439250	1017.439250	
								1/2 = 508.719625	
29	-152,630.478	-152,600 30.478	+33.828	-37,014.116	-37,000 14.116	-4.359	477.516048	132.853602	
8	-152,661.676	61.676	+28.570	-37,021.257	21.257	+18.639	607.312490	1149.578964	
9	-152,659.048	59.048	-33.828	-37,022.755	32.755	+4.359	1108.036140	257.390232	
30	-152,627.848	27.848	-28.570	-37,025.616	25.616	-18.639	721.849120	519.058872	
							1839.885260	1084.828538	
							755.056722	755.056722	
								1/2 = 377.528361	

変更後の資料なし

11-4②

面積計算書		工区	ウ	ブロック	11	計測者	縮尺者	備考	保 3-11-2 466-26...	
点	①	②	③	④	⑤	⑥	③	⑤	②	⑥
	X	X-(定数)	X _{n-1} -X _{n+1}	Y	Y-(定数)	Y _{n-1} -Y _{n+1}	+	-	+	-
30	-152,627.848	-152,600 27.848	+33.250	-37,025.616	-37,000 25.616	-1.827		851.732000	50.878296	
P	-152,659.048	+9.048	+29.150	-37,032.755	32.755	+16.105		954.808250		950.968040
10	-152,656.998	+6.998	-33.250	-37,041.721	41.721	+1.827	1387.223250			104.135346
31	-152,625.798	25.798	-29.150	-37,034.582	34.582	-16.105	1008.065300		415.476790	
							2395.288500	1806.540250	466.355086	1055.103386
							588.748300			588.748300
							変更後の資料なし		1/2 = 294.374150	
31	-152,625.798	-152,600 25.798	+34.097	-37,034.582	-37,000 34.582	-5.531		1179.142454	142.688738	
10	-152,656.998	+6.998	+28.304	-37,041.721	41.721	+19.808		1180.871184		1129.016384
11	-152,654.102	54.102	-34.097	-37,054.390	54.390	+5.531	1854.535830			299.238162
32	-152,622.901	22.901	-28.304	-37,057.252	47.252	-19.808	1237.420608		453.623008	
							3191.946438	2360.013638	596.311746	1428.254546
							831.942800			831.942800
									1/2 = 415.971400	

11-5 ⑦

面積計算書		工区	3	ブロック	11	計算者	精算者	備考	豊成 466-1	466-4
点	①	②	③	④	⑤	⑥	③ × ⑤	② × ⑥		
	X	X-(定数)	X _{n-1} -X _{n+1}	Y	Y-(定数)	Y _{n-1} -Y _{n+1}	+	-	+	-
33	-152,622.901	-152,600 22.901	+35.398	-37,047.242	-37,000 47.242	+8.098	1672.626296		185.452298	
11	-152,654.102	+4.102	+28.409	-37,054.390	+4.390	+19.349	1545.165510		1046.819598	
12	-152,651.310	+1.310	-38.185	-37,066.601	66.601	+4.114	2543.189185		211.089340	
34	-152,615.917	15.917	-32.606	-37,058.504	+8.504	-20.309	1907.881424		323.258353	
33	-152,618.704	18.704	+6.984	-37,046.292	46.292	-11.252	323.303328		210.457408	
							4450.740609	3541.095134	533.715761	1443.261236
							909.645475		909.645475	
									1/2 = 454.8227375	
34	-152,615.917	-152,500 115.917	-30.784	-37,058.504	-37,000 58.504	+5.807	1800.987136		673.130019	
17	-152,587.920	87.920	-25.204	-37,052.099	+2.099	-19.616	1313.103196		1636.718720	
18	-152,590.713	90.713	+30.784	-37,039.888	39.888	-5.807			1227.912192	526.770391
33	-152,618.704	118.704	+25.204	-37,046.292	46.292	+18.616	1166.743568		2209.993664	
							3114.090332	2394.655760	163.489116	2882.923689
							719.434572		719.434572	
									1/2 = 359.717286	

面積計算書		工区	ブロック	計算者	精算者	備考		
		3	11			豊成 466-6-1 保 3-11-1		
点	①	②	③	④	⑤	③ × ⑤	② × ⑥	
	X	X-(定数)	X _{n-1} -X _{n+1}	Y	Y-(定数)	+ -	+ -	
32	-152,622.901	-152,500 122.901	-35.085	-37,047.252	47.252	+ 5.306	1657.836420	652.112706
18	-152,590.713	90.713	-29.290	-37,039.888	39.888	-20.034	1168.319520	1817.344242
19	-152,593.611	93.611	+35.085	-37,027.218	27.218	-5.306	754.943530	496.699666
31	-152,625.798	125.798	+29.290	-37,034.882	34.882	+20.034	1012.906780	2520.237132
							2826.155940	1967.950210
							2314.044208	3172.349838
							858.305630	858.305630
							1/2 = 429.152815	
31	-152,625.798	-152,500 125.798	-34.237	-37,034.882	34.882	+ 1.602	1183.983934	201.528396
19	-152,593.611	93.611	-30.135	-37,027.218	27.218	-16.331	820.214430	1528.761241
20	-152,595.663	95.663	+34.237	-37,018.251	18.251	- 1.602	624.859487	153.252126
30	-152,627.848	127.848	+30.135	-37,025.616	25.616	+16.331	771.938160	2087.885688
							2004.198364	1396.797647
							1682.013367	2289.414084
							607.400717	607.400717
							1/2 = 303.7003585	
						変更後の資料なし		

面積計算書						工区	ブロック	計算者	精算者	備考	豊成
						3	11				466-3(1) 466-2(1)
点	①	②	③	④	⑤	⑥	③	⑤	②	⑥	
	X	X-(定数)	X _{n-1} -X _{n+1}	Y	Y-(定数)	Y _{n-1} -Y _{n+1}	+	-	+	-	
30	-152,627.848	-152,500 127.848	-34.815	-37,025.616	-37,000 25.616	+4.135	891.821040			528.651480	
20	-152,595.663	95.663	-29.554	-37,018.251	18.251	-18.866	539.390054		1804.778158		
21	-152,598.294	98.294	+34.815	-37,006.750	6.750	-4.135		238.001250	406.445690		
29	-152,630.478	130.478	+29.554	-37,014.116	14.116	+18.866		417.184264		2461.597948	
							1431.211094	652.185514	2211.223848	2990.249028	
							779.025580			779.025580	
							変更後の資料なし		1/2 = 389.512790		
29	-152,630.478	-152,500 130.478	-35.727	-37,014.116	-36,900 114.116	+8.130	4077.022332			1060.786140	
21	-152,598.294	98.294	-28.639	-37,006.750	106.750	-22.863	3087.213250		2247.295722		
22	-152,601.839	101.839	+35.727	-36,991.243	91.243	-8.130		3260.195931	827.951070		
28	-152,634.021	134.021	+28.639	-36,998.620	98.620	+22.863		2824.378180		3064.122123	
							7134.235582	6084.574111	3075.246792	4124.908263	
							1049.661471			1049.661471	
									1/2 = 524.830725		

面積計算書						工区	ブロック	計算者	精算者	備考	豊成 466-1 (5)
			3		11						" 464 (5)
点	①	②	③	④	⑤	⑥	③	⑤	②	⑥	
	X	X-(定数)	X _{n-1} -X _{n+1}	Y	Y-(定数)	Y _{n-1} -Y _{n+1}	+	-	+	-	
28	-152,634.021	-152,600 34.021	-25.792	-36,998.620	-36,900 98.620	+ 8.421	3529.807040				286.470841
22	-152,601.839	1.839	-28.570	-36,991.253	91.253	-23.157	2607.098210			42.585723	
23	-152,605.451	5.451	+ 25.792	-36,975.463	75.463	- 8.421		2700.971696		45.902871	
27	-152,627.631	37.631	+ 28.570	-36,982.832	82.832	+ 23.157		2366.510240			871.421067
							6136.904250	5067.481936		88.488594	1157.911908
							1069.423314				1069.423314
										1/2 = 534.711657	
27	-152,637.631	-152,600 37.631	- 35.366	-36,982.832	-36,900 82.832	+ 6.568	2929.436512				247.160408
23	-152,605.451	5.451	- 28.991	-36,975.463	75.463	- 21.305	2187.747833			116.133555	
24	-152,608.640	8.640	+ 35.366	-36,961.527	61.527	- 6.568		2175.963882		56.747520	
26	-152,640.817	40.817	+ 28.991	-36,968.895	68.895	+ 21.305		1997.334945			869.606185
							5117.184345	4173.298927		172.881075	1116.766593
							943.885518				943.885518
										1/2 = 471.942759	

面積計算書		工区	3	ブロック	11	計算者	精算者	備考	陽切	
点	①	②	③	④	⑤	⑥	③ × ⑤	② × ⑥		
	X	X-(定数)	X _{n-1} -X _{n+1}	Y	Y-(定数)	Y _{n-1} -Y _{n+1}	+ -	+ -		
I	-152,615.612	-152,600 15.612	+ 2.126	-36,931.049	-36,900 31.049	- 2.246		66.010174	21.064552	
K.62	-152,617.069	17.069	+ 2.732	-36,931.728	31.728	+ 1.239		86.620896	21.148491	
1	-152,618.344	18.344	- 2.126	-36,932.288	32.288	+ 2.246	68.624288		41.200624	
25	-152,614.943	14.943	- 2.732	-36,933.974	33.974	- 1.239	92.816968	18.514377		
							161.461256	152.691070	53.578929	62.349115
							8.770186			8.770186
								1/2 = 4.385093		
3	-152,673.456	-152,600 73.456	+ 0.669	-36,956.509	-36,900 56.509	- 2.924		37.804521	214.785244	
II	-152,676.202	76.202	+ 2.077	-36,957.716	57.716	+ 4.131		119.876132	314.790462	
4	-152,675.533	75.533	- 2.746	-36,960.640	60.640	- 1.207	166.517440	91.168331		
							166.517440	157.620653	305.953675	314.790462
							8.836787			8.836787
								1/2 = 4.4183935		

面積計算書		工区	3	ブロック	11	計算者	精算者	備考	陽坪
点	①	②	③	④	⑤	⑥	③ × ⑤	② × ⑥	
	X	X-(定数)	X _{n-1} -X _{n+1}	Y	Y-(定数)	Y _{n-1} -Y _{n+1}	+ -	+ -	
13	-152,651.1PP	-152,600 +1.1PP	+2.924	-37,067.088	-37,000 67.088	+0.66P	196.164312	34.252131	
III	-152,650.430	+0.430	-3.493	-37,070.013	70.013	+2.256	251.55670P	113.995680	
14	-152,647.606	47.606	+0.66P	-37,069.344	69.344	-2.924	46.391136	139.247550	
							251.55670P	242.556448	
							P.000261	P.000261	
								1/2 = 4.5001305	
15	-152,590.063	-152,500 90.063	-0.66P	-37,056.180	-37,000 56.180	+2.924	37.584420	268.434275	
IV	-152,587.13P	87.13P	-2.255	-37,055.511	55.511	-3.494	125.177305	313.177566	
16	-152,587.808	87.808	+2.924	-37,052.586	52.586	+0.66P	153.761464	58.743552	
							162.761725	153.761464	
							P.000261	322.177827	
								P.000261	
								1/2 = 4.5007305	

計年
月
算日

計
算
者



檢
查
者



B.NO. ~~45~~ 11 各筆面積計算書

地番	算式	隅切	地積	摘要
	463 463 (イ)		922.28	
	" 463 (ロ)		695.03	
	" 465 (イ)		457.52	
	" 466の1 (ロ)		518.29	
	" 466の2 (ロ)		508.71	
	" 466の3 (ロ)		377.52	
	保留地 3-11-2		294.37	
	" 466の26		415.97	
	" 466の1 (イ)		454.82	
	" 466の4 (イ)		359.71	
	" 466の6 (イ)		429.15	
	保留地 3-11-1		303.70	
	" 466の3 (イ)		389.51	
	" 466の2 (イ)		524.80	
	" 466の1 (イ)		534.71	
	" 464 (イ)		471.94	
	水路		218.60	
	計		7,876.66	
	全体		7,876.72	
		差	0.06	
	換地		7,059.99	
	保留地		598.07	
	水路		218.60	